

# Data & Event Management at Scale

Presented By: Matthew Brocklehurst

**POWER**  
**FACTORS**  
DRIVE

# POWER FACTORS DRIVE

- SaaS company founded by power industry veterans
- Flagship Product Drive Platform
- 90+ Industry experts
- 5 Continents
- 20GW+ Solar, Wind, Storage

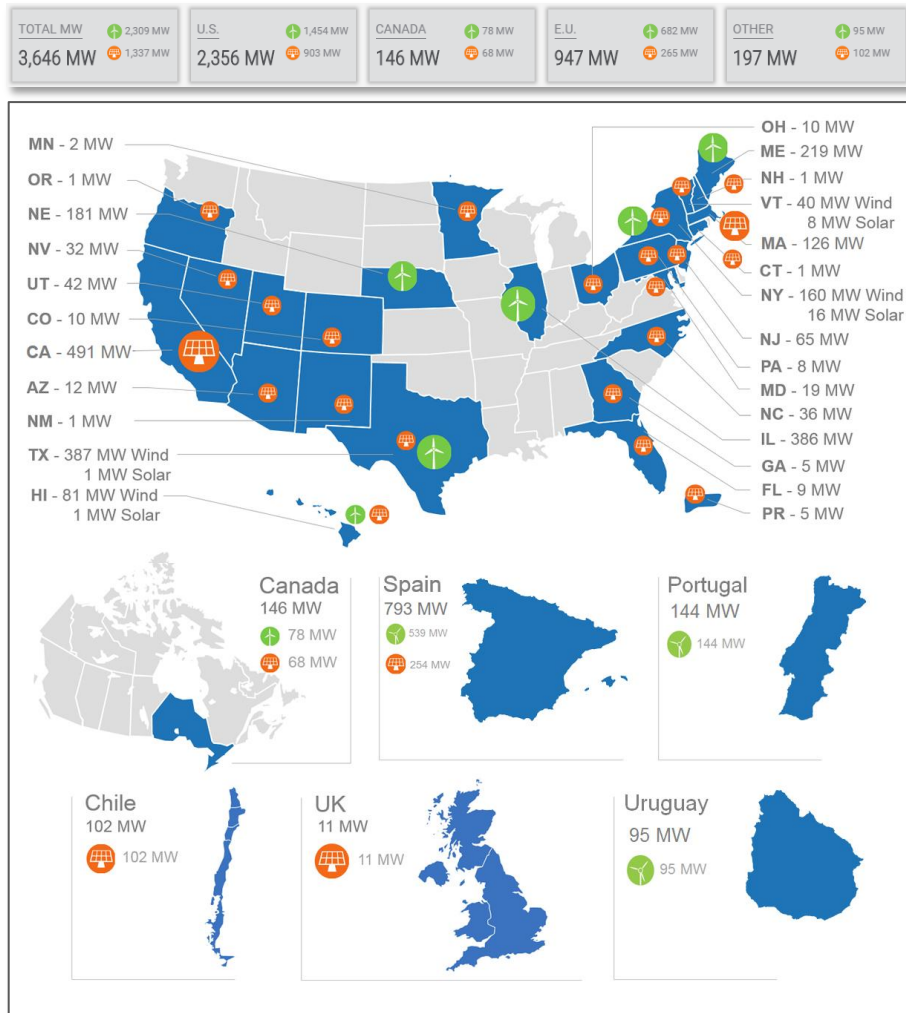


# Challenge



- Owner-Operator Yield Co
- ~3600 MWs in NA/Europe
  - ~2500MWs in NA
  - Mixed Fleet of 500+ Solar & Wind sites

Onboard this fleet in 3 months!



# Technical Challenges

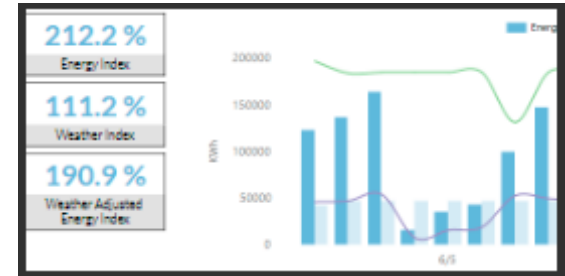
Deploy 500+ sites in 3 months

with various interfaces & technologies

Data Quality Issues:-  
Sensors/Comms Failures & Meter Rollovers

Generate Meaningful Events & Integrate with Field Service Systems

Accurate & audited reporting



# Managed Service Requirements for Terraform

500+ Sites

Real-Time  
Data +  
Context

Data Curation

Event  
Management

Analytics

User Interface  
System of  
Engagement

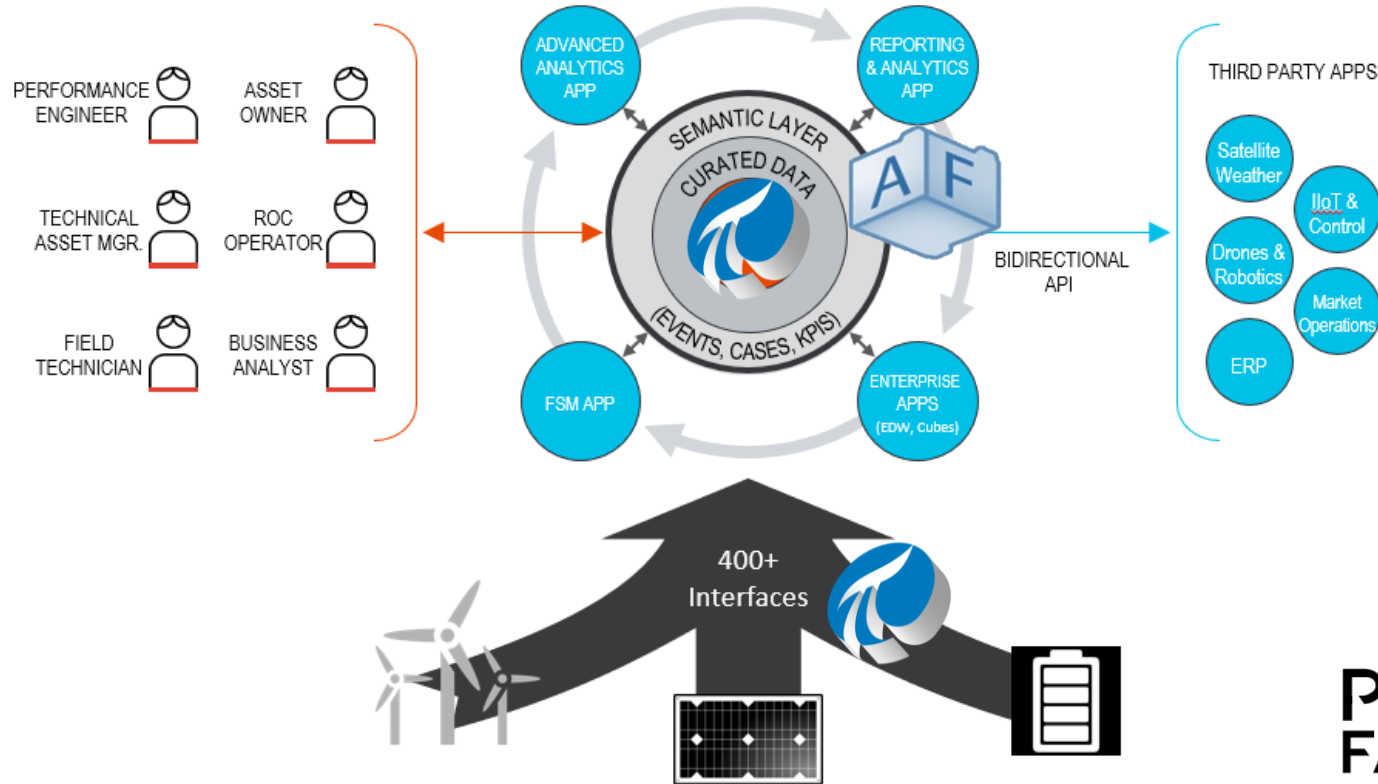
Case  
Management

O&M - Work  
Management

Detailed  
Investor  
Reporting

# Solution

# System of engagement for renewable energy





# Key Drivers

## Data & Quality Management

- PI System, AF, Interfaces
- VEE Data Curation Engine

## Event Management

- Event Genealogy
- Compression & Shelving

## Reporting Flexibility

- Pre-Configured Reports
- Ad hoc Reporting with Full API

## Advanced Analytics

- Integrated Analytics

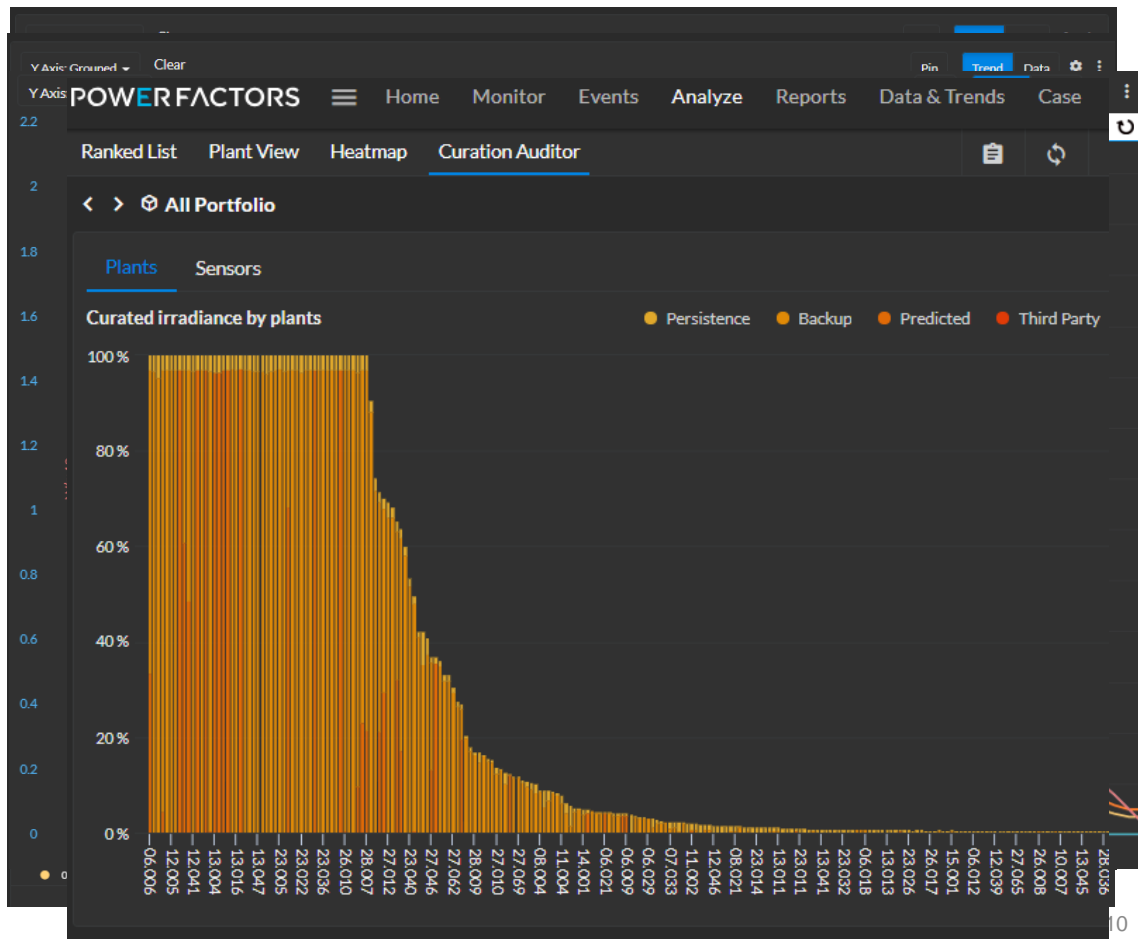
## Auditable & Scalable

- SOC 1 Audited (Type 2)
- OSIsoft PI, MS Azure, Salesforce



# Data Curation @ Scale

- Advanced Rules to Validate & Estimate
- Quickly identified dozens of pyranometers needing replacement
- Maintained estimated reporting while under service

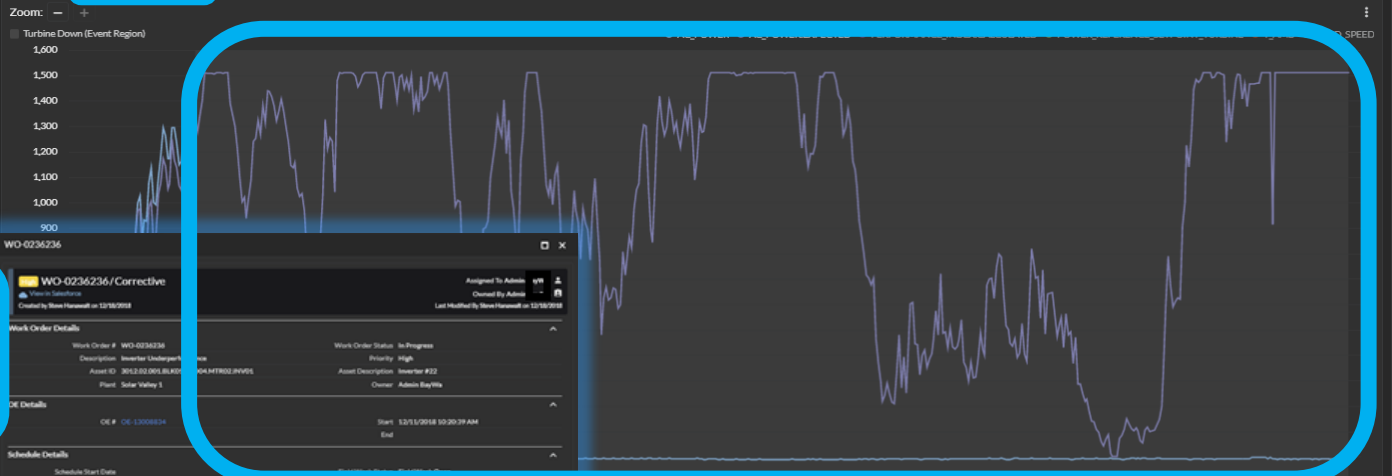


EG-0000007390 \*  
Edit Time Split Merge  
Status **Open**  
Ack. **UNACK**  
Event Code **1156 - Repair**  
Asset EWP01-28  
Start Time 02/21/2019 8:30:00 AM  
End Time

Energy Loss <sup>MWh</sup> 86,529.56  
Rate loss <sup>MWh/h</sup> 1,042.68

- Work Order
- |                |                           |
|----------------|---------------------------|
| Controllable   | Controllable              |
| Responsibility | Manufacturer              |
| Level 1        | Information Available     |
| Level 2        | Non-Operative             |
| Level 3        | Planned Corrective Action |
| Level 4        | Planned Corrective Action |
| Level 5        | Other Corrective Action   |

Knowledge Base



PF120 - Turbine Down ED-0000012199

1063 - Safety chain			
1118 - Emergency stop nacelle / hub			
1145 - Pitch control deviation axis 1			
1121 - Axis 1 fault pitch controller			
1149 - Axis 2 fault pitch controller			
1150 - Axis 3 fault pitch controller			
1156 - Repair		ED-0000012214	

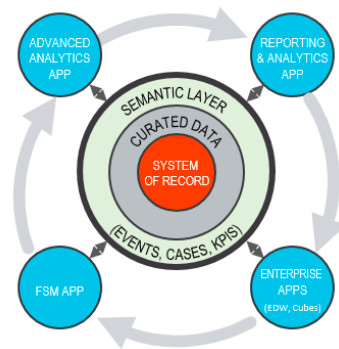
02/21/2019 20:00 02/22/2019 00:00 02/22/2019 04:00 02/22/2019 08:00 02/22/2019 12:00 02/22/2019 16:00 02/23/2019 00:00 02/23/2019 04:00 02/23/2019 08:00 02/23/2019 12:00 02/23/2019 16:00 02/24/2019 00:00 02/24/2019 04:00 02/24/2019 08:00 02/24/2019 12:00 02/24/2019 16:00

135 Events



# POWER FACTORS DRIVE

## Data & Event Management at Scale



### CHALLENGE

A diverse fleet of non-homogeneous assets and aggressive onboarding schedule with public company filing requirements

- Disparate multi-OEM wind and solar plants
- Data quality
- Numerous, non-intelligent alarms

### SOLUTION

Drive System of Engagement with Data Quality, Event Management, & Reporting

- PI Historian, interfaces and AF for data collection and data management
- Power Factors Data Quality Engine, Event Manager
- Scalable, SOC compliant managed SaaS application

### RESULTS

Automation & business continuity to achieve operational performance and compliance objectives

- Quality data for 500+ power plants across wind and solar
- Manageable alarms for O&M (90% reduction)
- External stakeholder & SOX reporting requirements



# Speaker

- Matthew Brocklehurst
- CTO
- Power Factors
- [brock@pfdrive.com](mailto:brock@pfdrive.com)



# Questions?

Please wait for  
the **microphone**

State your  
**name & company**



# Please remember to...

## Complete Survey!

Navigate to this session in  
mobile agenda for survey

