



From Digital Oilfield to Digital Transformation to Full Field Analytics

Presented by: Denise Sherrod

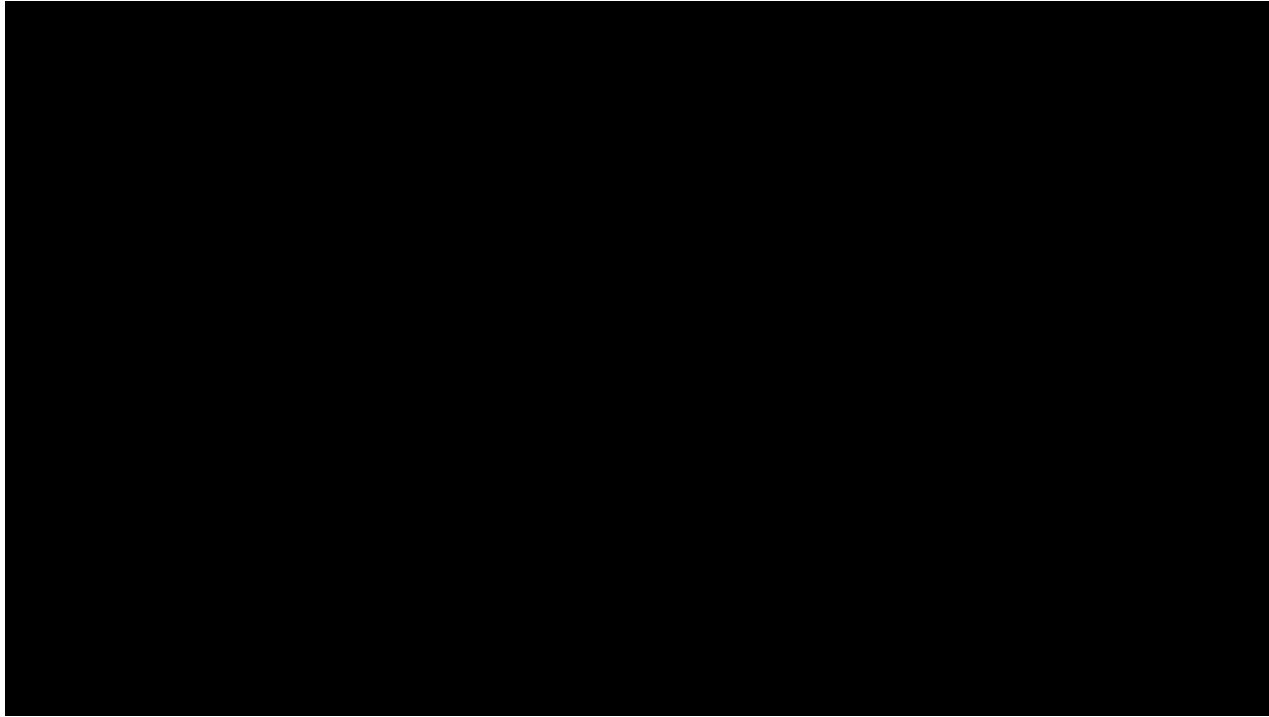


Occidental Petroleum

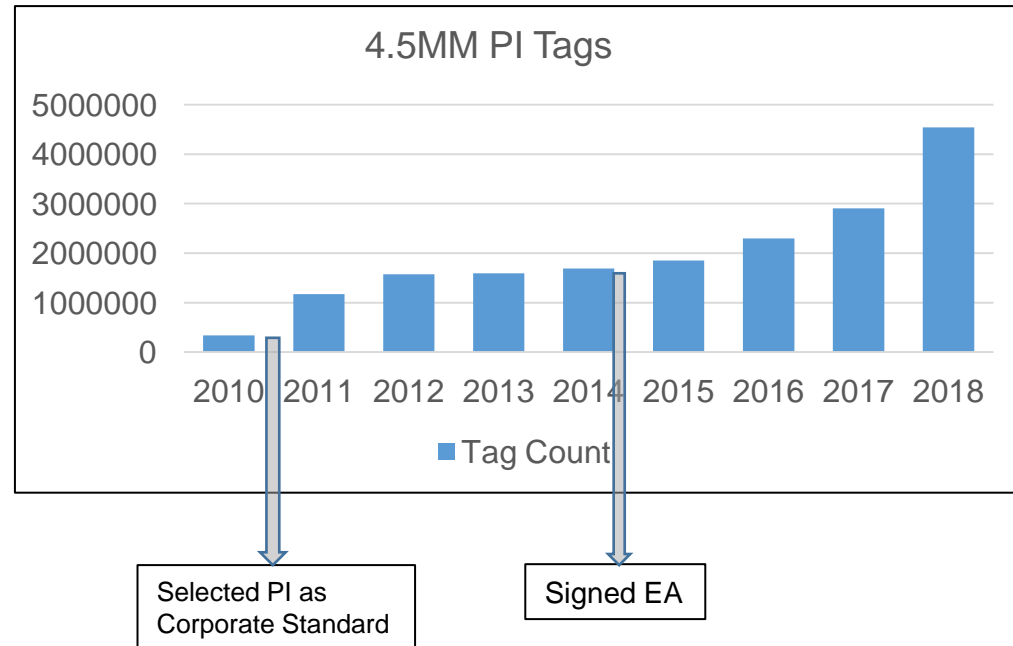
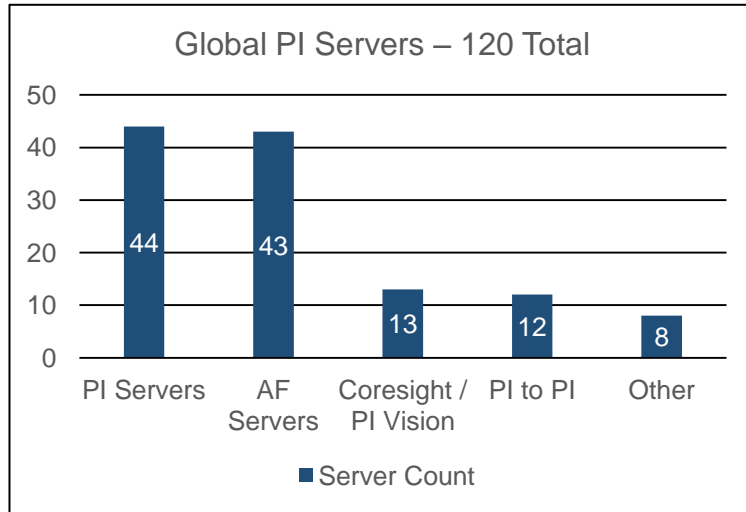
Topics

- About Oxy
- Business Challenge
- Digital Oilfield
- Digital Transformation
- Full Field Analytics
- Field Mobility
- Conclusion

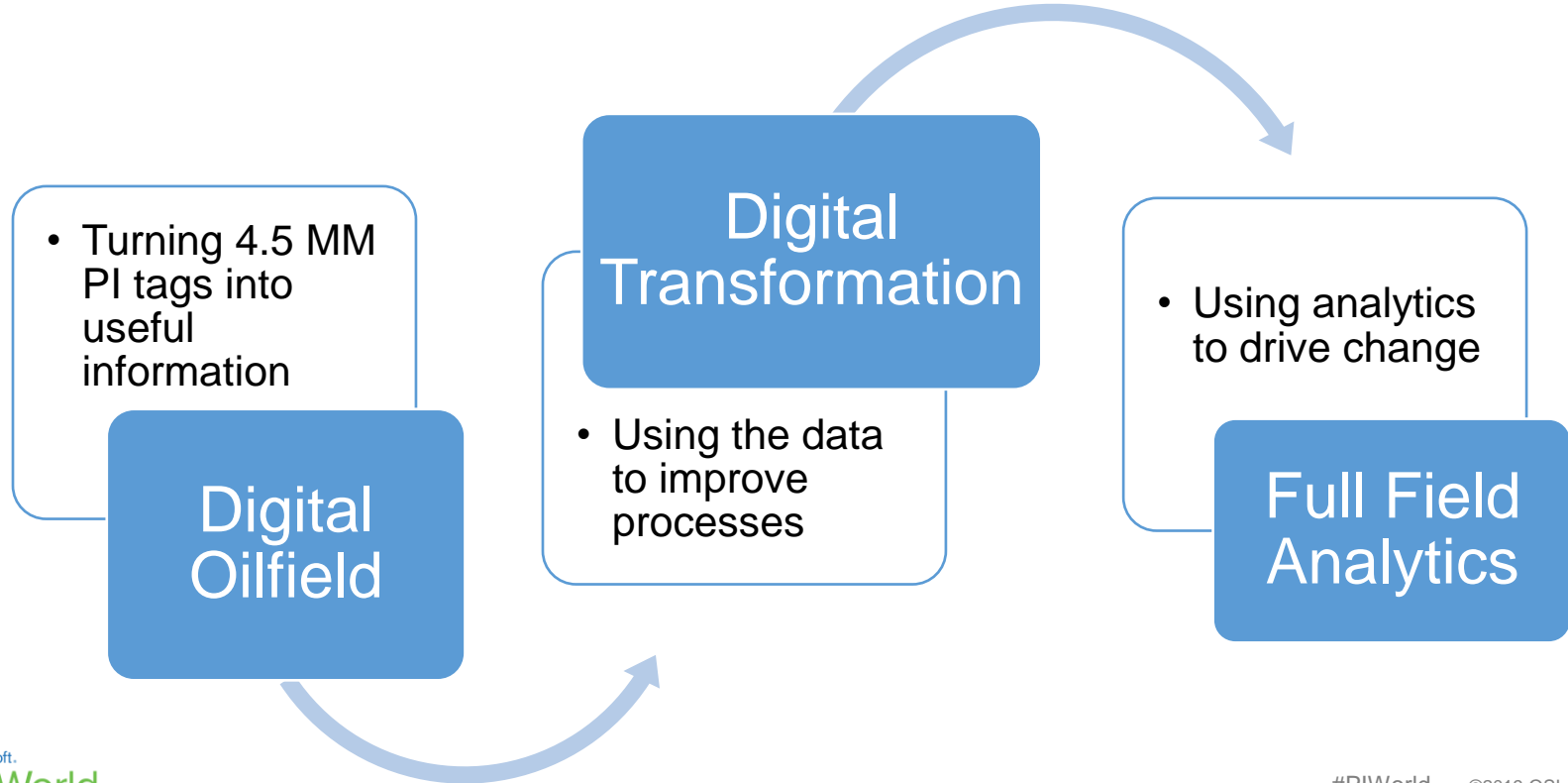
Company Overview



PI Statistics



Business Challenge



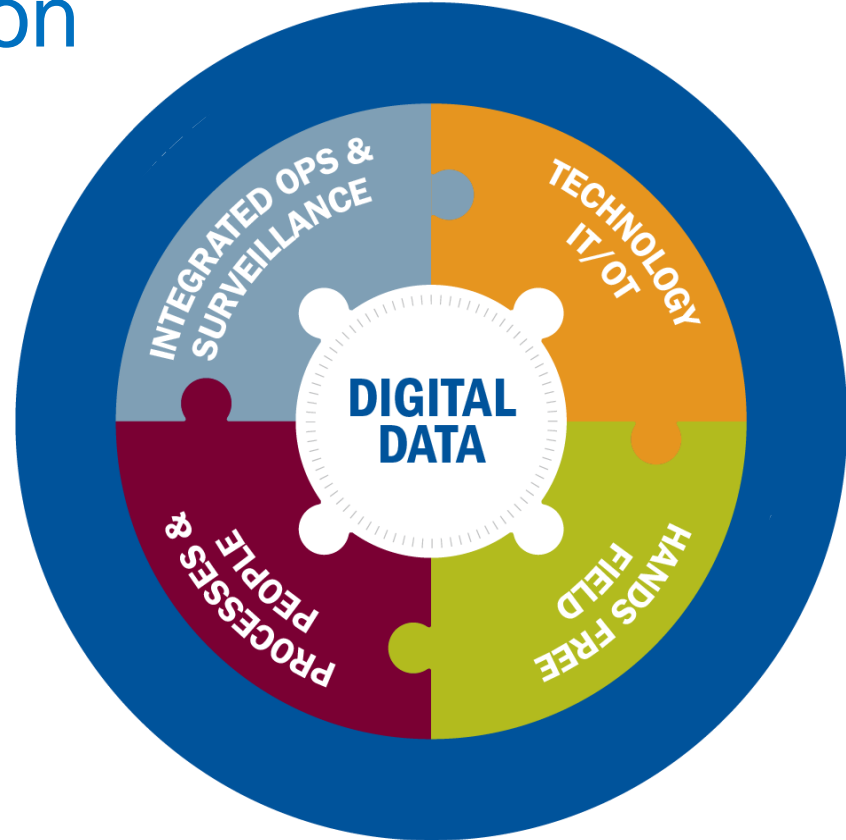
The Digital Oilfield – Where Are We Today

- Massive amounts of data stored in systems such as PI
- Hours/days spent gathering and analyzing the data
- Field personnel carry out manual operations



Digital Transformation

- Using data to drive change

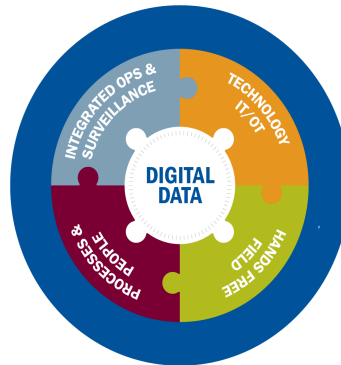


Digital Data



Data is the Driver of Digital Transformation

- The right data is collected at the correct frequency
- Access to data must be seamless and fast
- Data must be converted into useful information



Integrated Ops and Surveillance

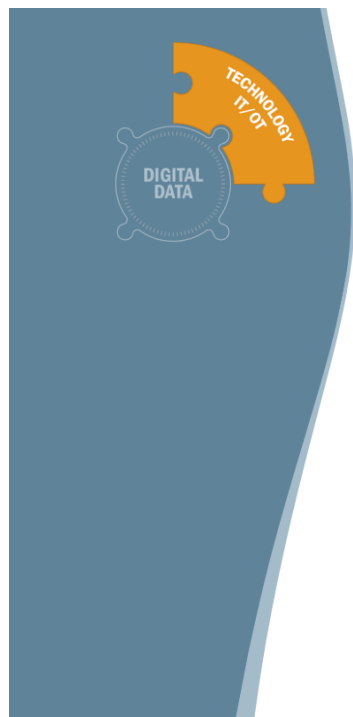


Apply Manufacturing Plant Methodology to Manage the Field

- End to end, real time view of the entire field ecosystem
- Integrated, planned, proactive maintenance
- Video surveillance provides remote surveillance

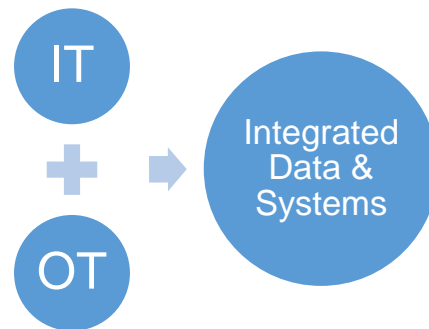


Information Technology / Operational Technology



Convergence of IT and OT

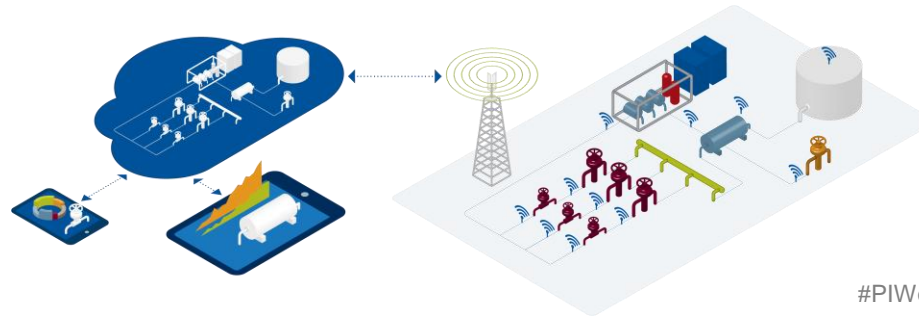
- Real-time operational data are ingested by advanced IT systems
- Advanced Analytics and Machine Learning provide solutions
- Smart devices to talk to the cloud (Internet of Things)



Hands Free Field

Automate Operational Tasks

- Daily routes and manual data capture are eliminated
- Instrumentation and automation throughout the field
- Self-adjusting devices
- Mobility provides virtual control rooms from anywhere



Processes & People

Process Transformation is Critical

- Advanced collaboration requires new processes / skills
- Requires a paradigm shift
- New skills will be required to operate in a more technical environment



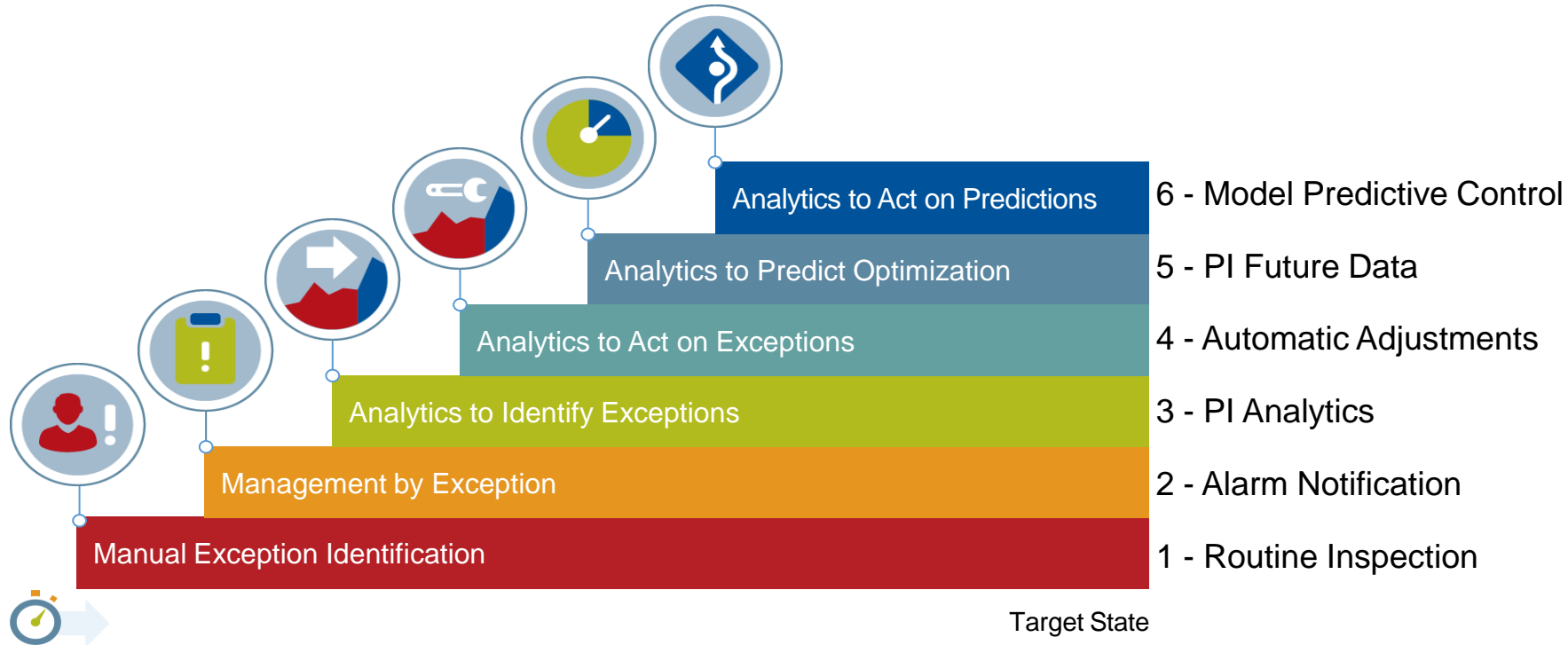
Transforming The Way We Think and How We Work



Anecdotal	➔	Data driven decisions
Reactive	➔	Proactive actions plans
Segregated	➔	Collaborative Work
Fire Fighting	➔	Preventative Maintenance
Hands-on	➔	Automated Control
Historical Review	➔	Real-time Analytics
Routine Work	➔	Continuous Improvement
Treating Symptoms	➔	Developing Cures
Cost Containment	➔	Value Creation
Cumbersome	➔	Agile Operations

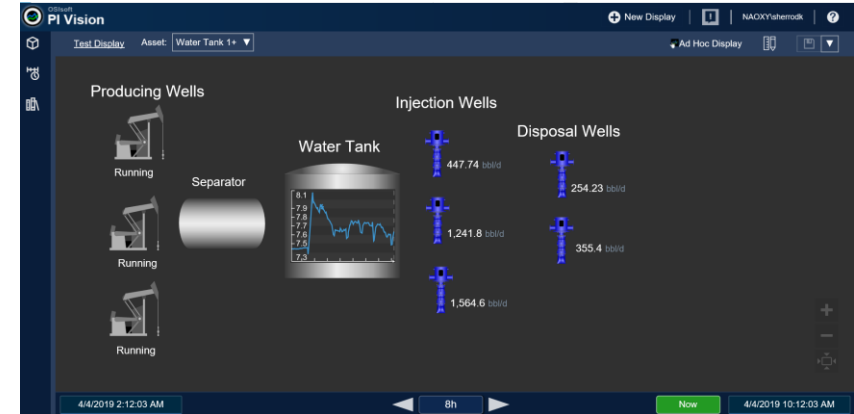


From Digital Transformation to Full Field Analytics







1 – Manual Exception Identification

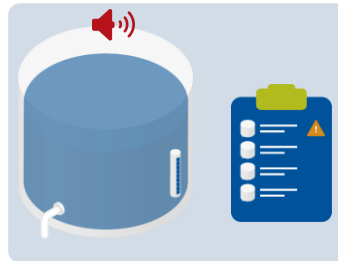
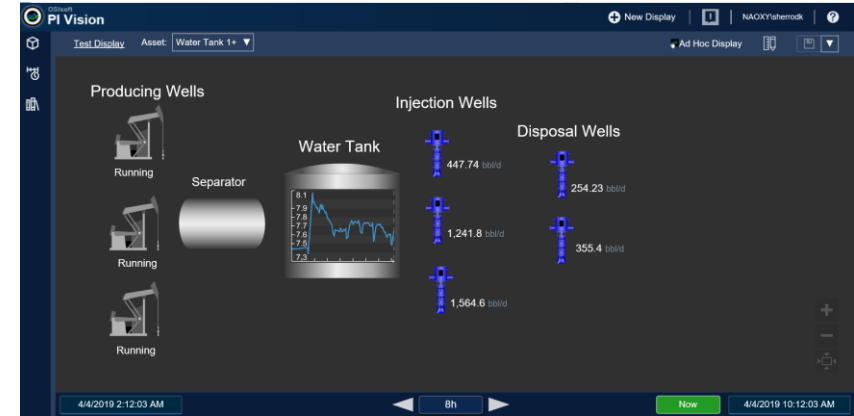
- 6  Analytics to Act on Predictions
- 5  Analytics to Predict Optimization
- 4  Analytics to Act on Exceptions
- 3  Analytics to Identify Exceptions
- 2  Management by Exception
- 1  Manual Exception Identification



Manual high tank level
identified on daily route





2 – Management by Exception

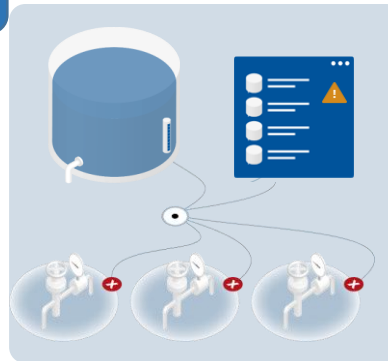
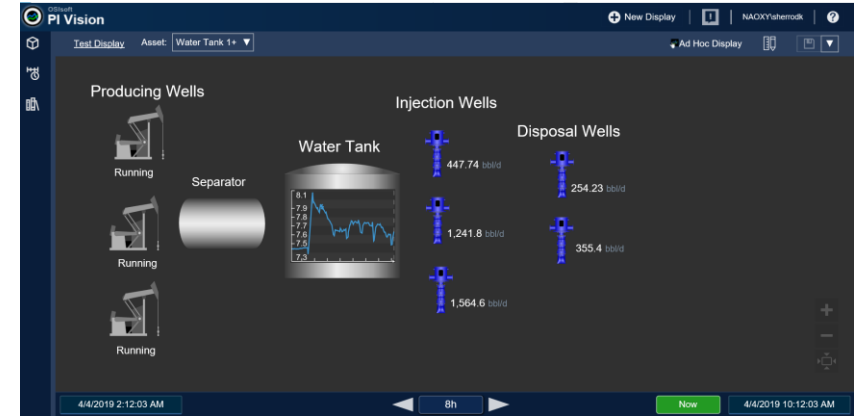
- 6  Analytics to Act on Predictions
- 5  Analytics to Predict Optimization
- 4  Analytics to Act on Exceptions
- 3  Analytics to Identify Exceptions
- 2  Management by Exception
- 1  Manual Exception Identification



Operator receives a high tank level alarm and goes to this facility first



3 – Analytics to Identify Exceptions

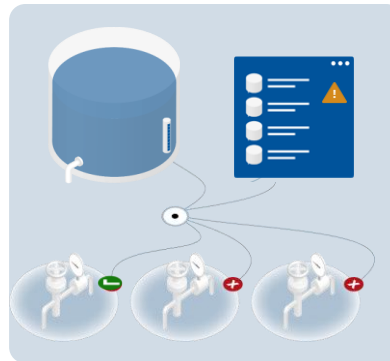
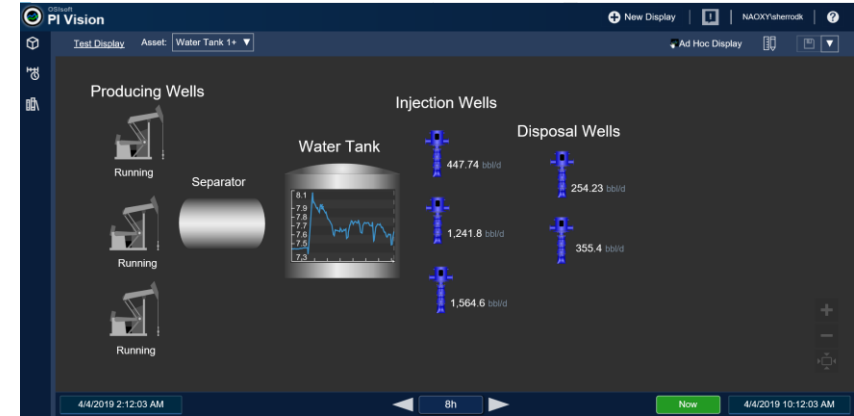
- 6  Analytics to Act on Predictions
- 5  Analytics to Predict Optimization
- 4  Analytics to Act on Exceptions
- 3  Analytics to Identify Exceptions**
- 2  Management by Exception
- 1  Manual Exception Identification



PI Analytics identifies an exception - High water tank level & disposal wells not 100% open







4 – Analytics to Act on Exceptions

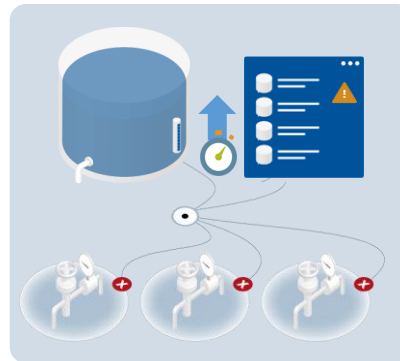
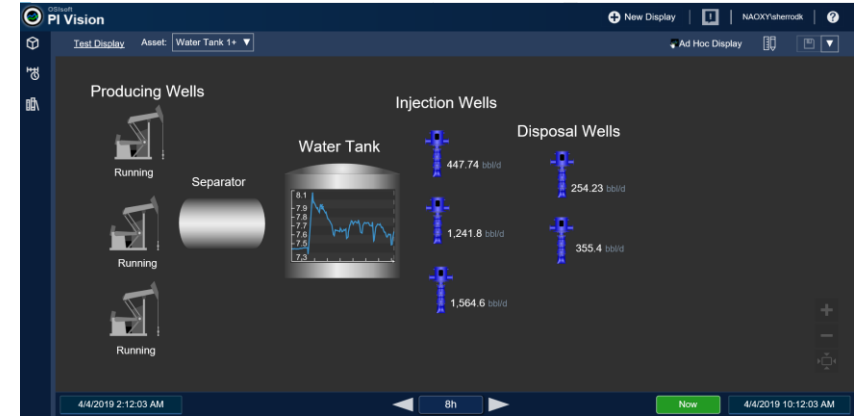
- 6  Analytics to Act on Predictions
- 5  Analytics to Predict Optimization
- 4  Analytics to Act on Exceptions
- 3  Analytics to Identify Exceptions
- 2  Management by Exception
- 1  Manual Exception Identification



Automatic adjustment of disposal wells to reduce high tank level

5 – Analytics to Predict Optimization

- 6  Analytics to Act on Predictions
- 5  Analytics to Predict Optimization
- 4  Analytics to Act on Exceptions
- 3  Analytics to Identify Exceptions
- 2  Management by Exception
- 1  Manual Exception Identification



PI Future Data predicts a high level, providing more time to respond

6 – Analytics to Act on Predictions

6



Analytics to Act on Predictions

5



Analytics to Predict Optimization

4



Analytics to Act on Exceptions

3



Analytics to Identify Exceptions

2

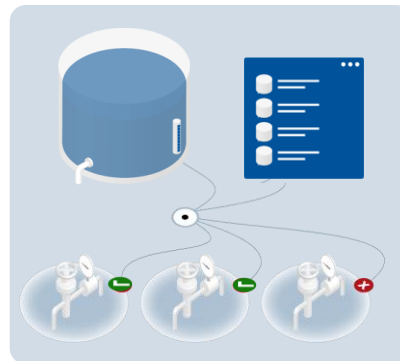
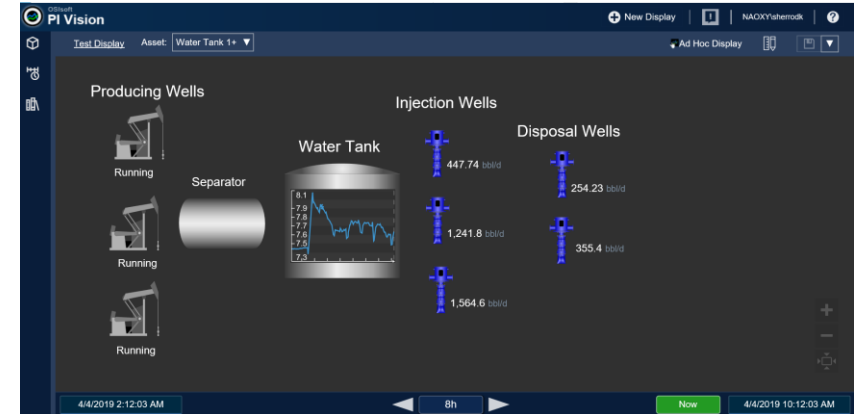


Management by Exception

1



Manual Exception Identification



Automatic adjustment of disposal and producing wells to maintain optimal tank level

Changing The Way We Work

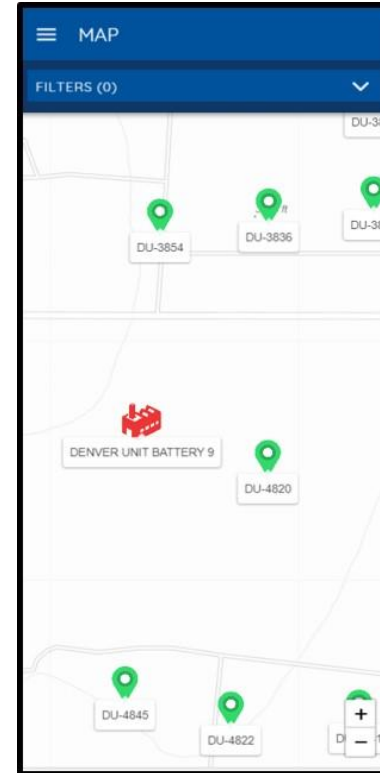
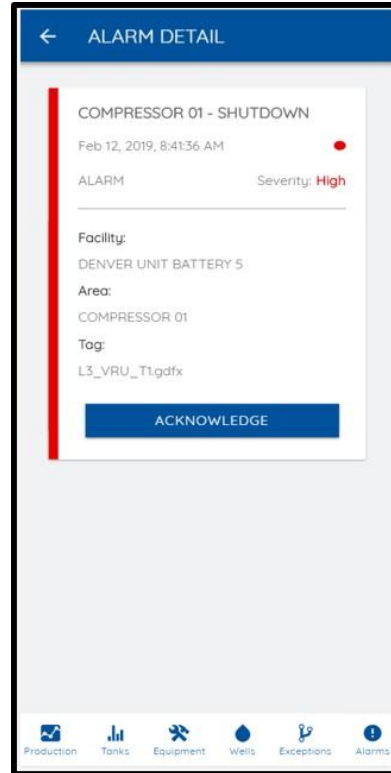
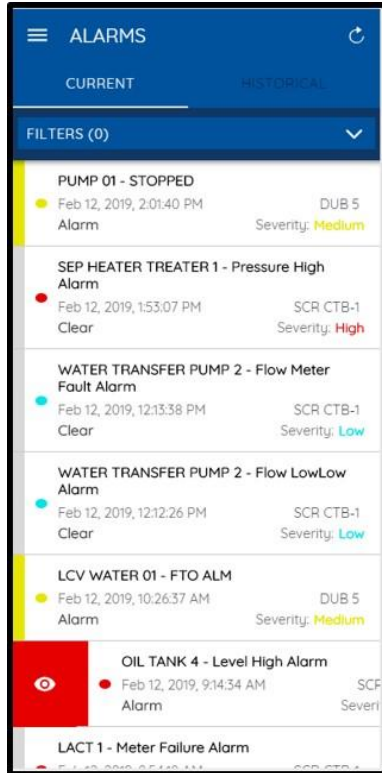


Field Mobility

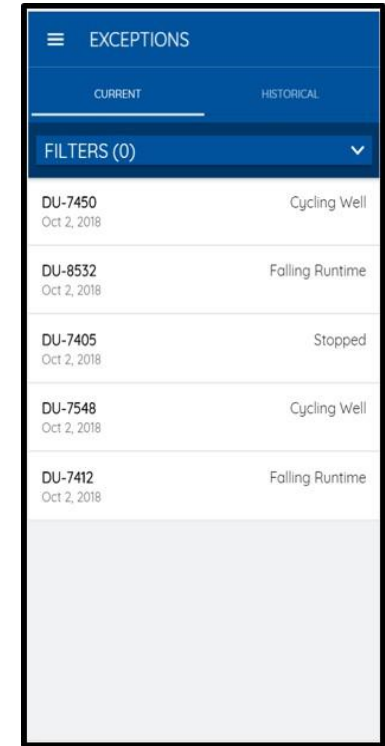
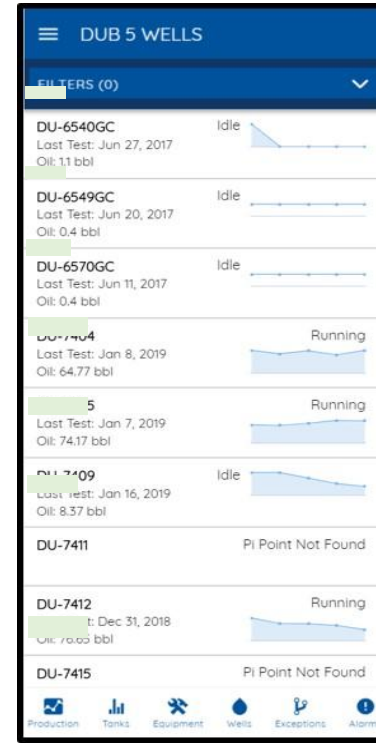
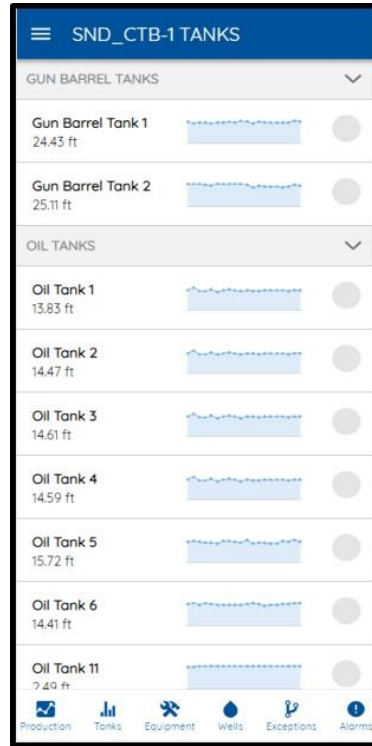
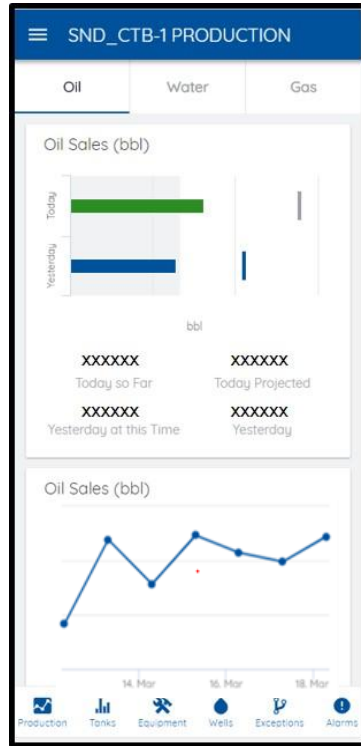
- Provides alarms, real-time, and historical surveillance data to the operators in the field
- Internally developed application
- Displays real-time data from PI
- Uses Asset Frame (AF) for navigational hierarchies



Field Mobility – Virtual Control Room for Entire Field



Field Mobility – Operations Dashboard



Occidental Petroleum Levering the PI System to Drive Change



CHALLENGE

Transform the way we work

- Take advantage of the massive amounts of data we have in our PI systems to change our work processes

SOLUTION

Operate our fields more like a manufacturing plant using full field analytics

- Use PI data to be able to predict and prevent upset conditions

RESULTS

Increasing operational efficiency

- We're still early in the game, but we're making progress in transforming our operations from reactive to predictive and preventative

Speaker Information



- Denise Sherrod
- Chief of Automation
- Occidental Petroleum
- Denise_Sherrod@oxy.com

Questions?

Please wait for
the **microphone**

State your
name & company



Please remember

TO DOWNLOAD
APP, SEARCH
OSISOFT



Download on the
App Store



GET IT ON
Google Play



