



"Ask the PI System Expert" Q&A Session: PI Vision

Dan Lopez, Senior Systems Engineer

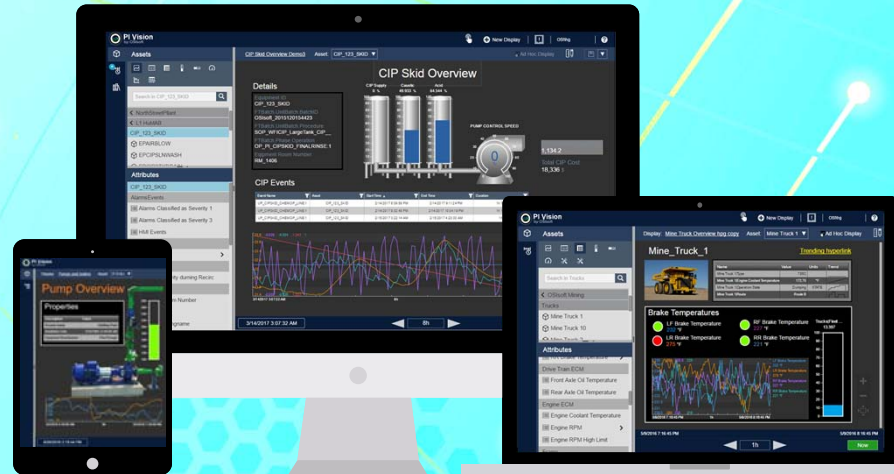


PI Vision

The fastest, easiest way to visualize PI System data

An easy to use, self-service,
scalable solution

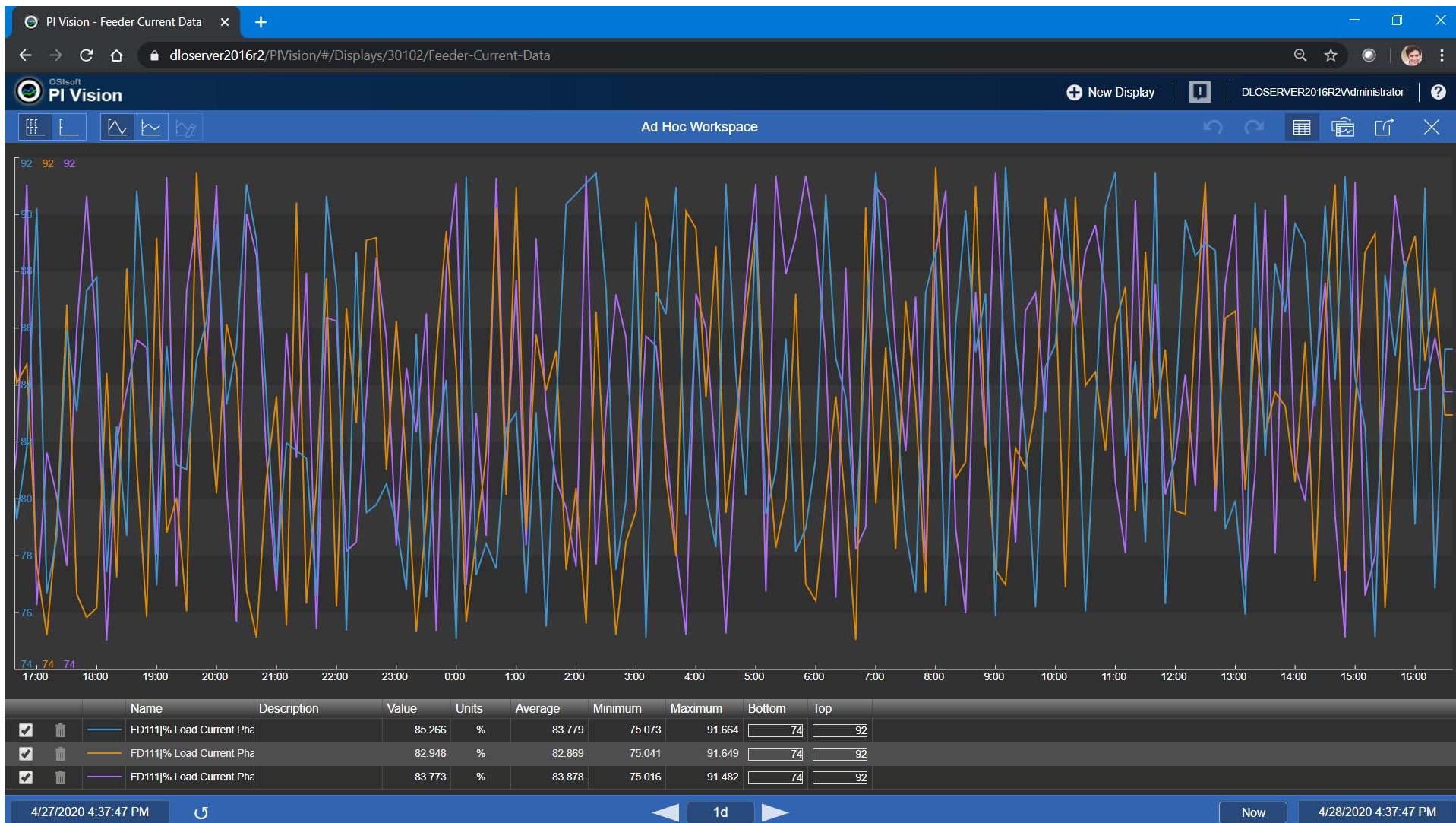
- Access data from any web browser, including **mobile** device browsers
- **Organize and share** displays across your organization



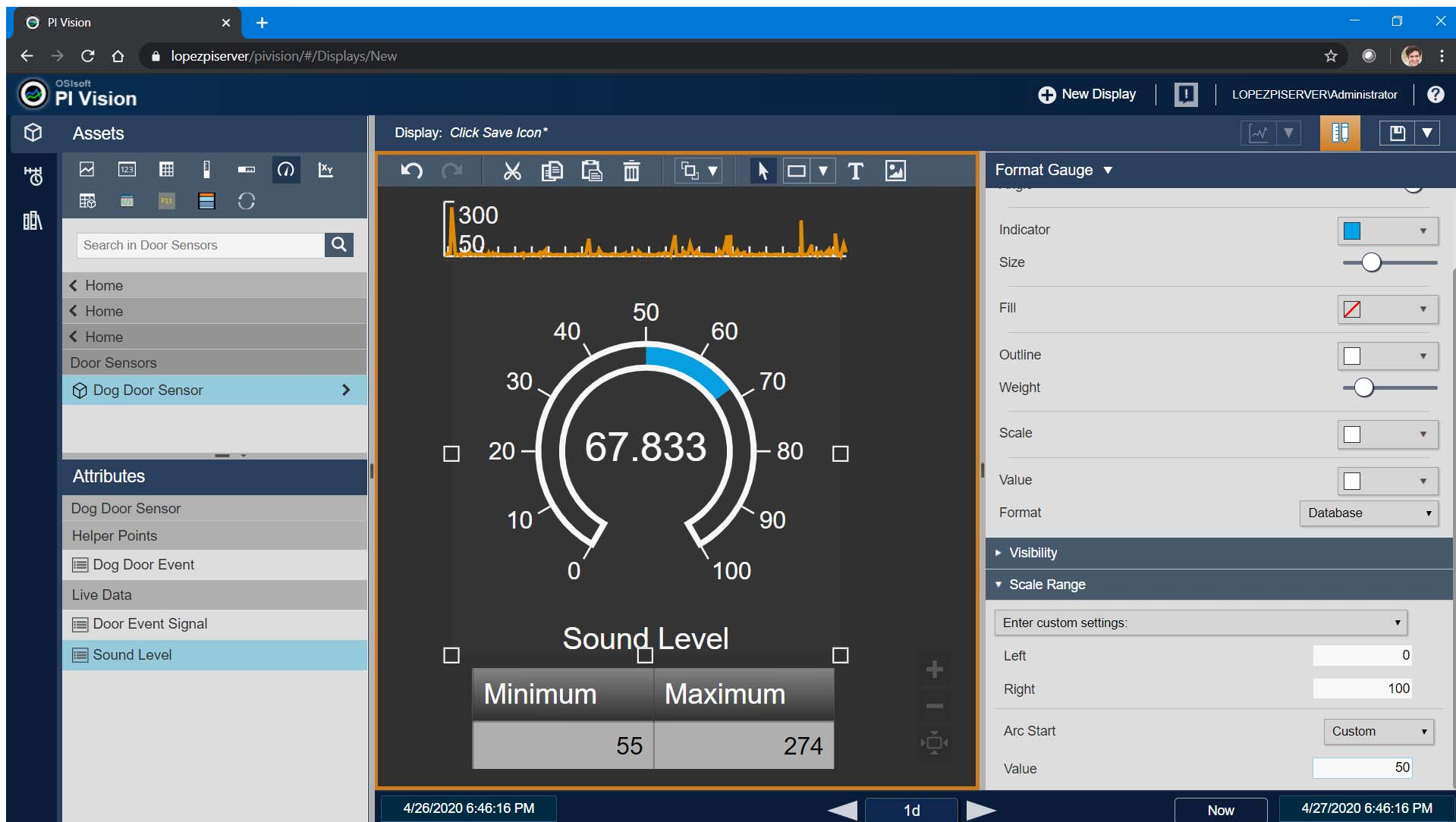
What's New in PI Vision 2019?

Ad Hoc Trending





Gauge Configuration



PI ProcessBook Migration

PI ProcessBook - [Main Column Bottom.PDI]

File Edit View Insert Tools Draw Arrange Window Help

142% 2/3/2020 2/5/2020 C:\Program Files (x86)\PIPC\Procbook\en\PIDEMO.PIW\Main Column Bottom

The diagram shows a distillation column with several temperature points and flow streams. Key labels include:

- Top Section:** Fat Oil 74 BPD, LN Oil to ABS 74 MBPD, 74.40 DEG F, 74 DEG F, 74 DEG F.
- Feed Section:** FEED FROM REACT, 40# STEAM, 74.40 DEG F, 74%.
- Bottom Section:** HGO P/D, 74 MBPD, Stm Ge, 74 DEG F.

Migrate PI ProcessBook Displays

1 Add and select displays to analyze

Files and Folders

Path/FileName	Date Modified
<input checked="" type="checkbox"/> C:\Users\Administrator\Documents\Main Column Bottom.PDI	2/5/2020 12:58 PM

1 files listed 1 files selected

Remove From List Run Analysis

2 View analysis results, select displays, and run migration

Analysis Results Summary Tree View

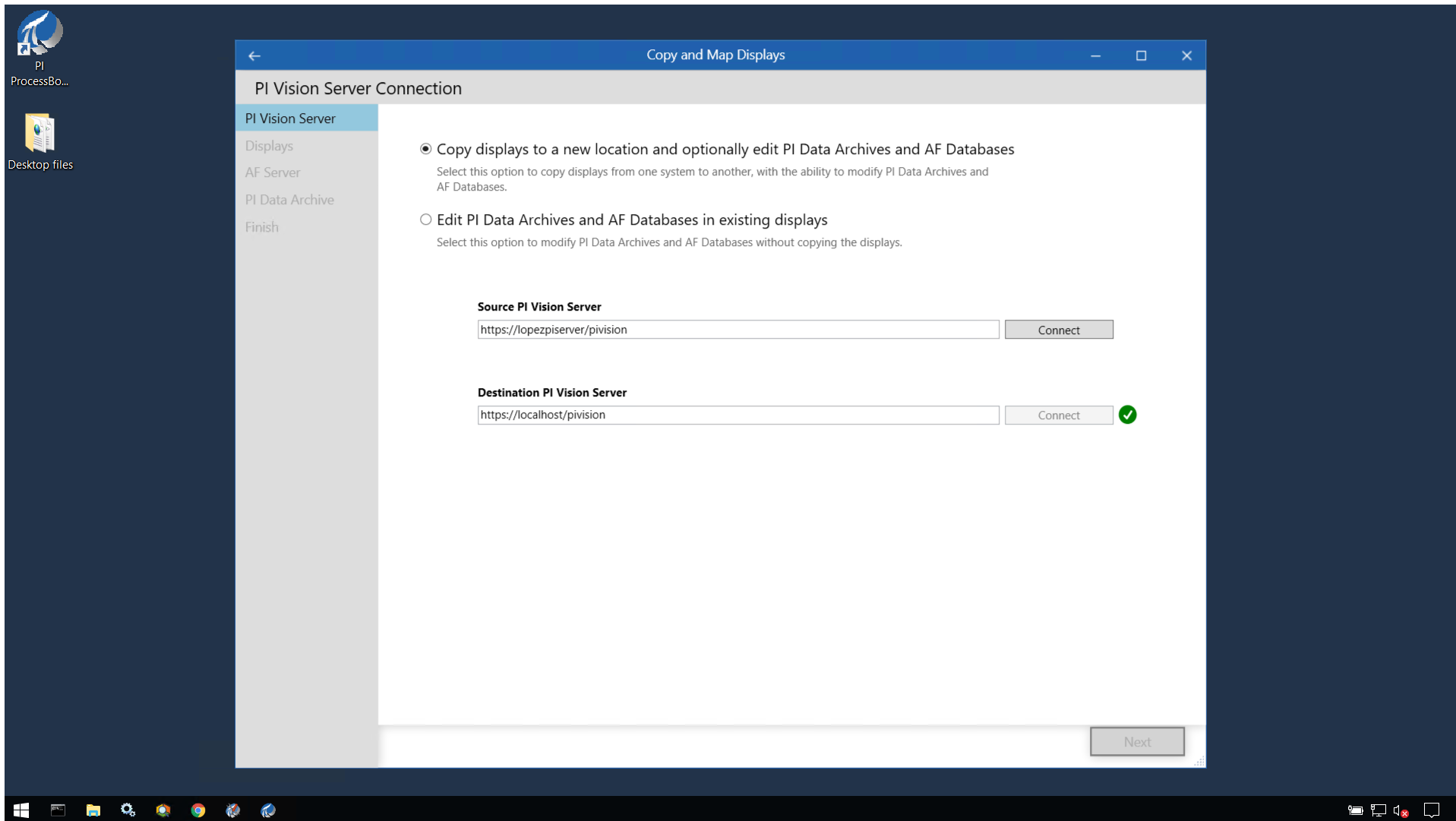
Path/FileName	Issues
<input checked="" type="checkbox"/> Can be Fully Migrated ⓘ	
<input checked="" type="checkbox"/> Main Column Bottom	

1 files listed 1 files selected

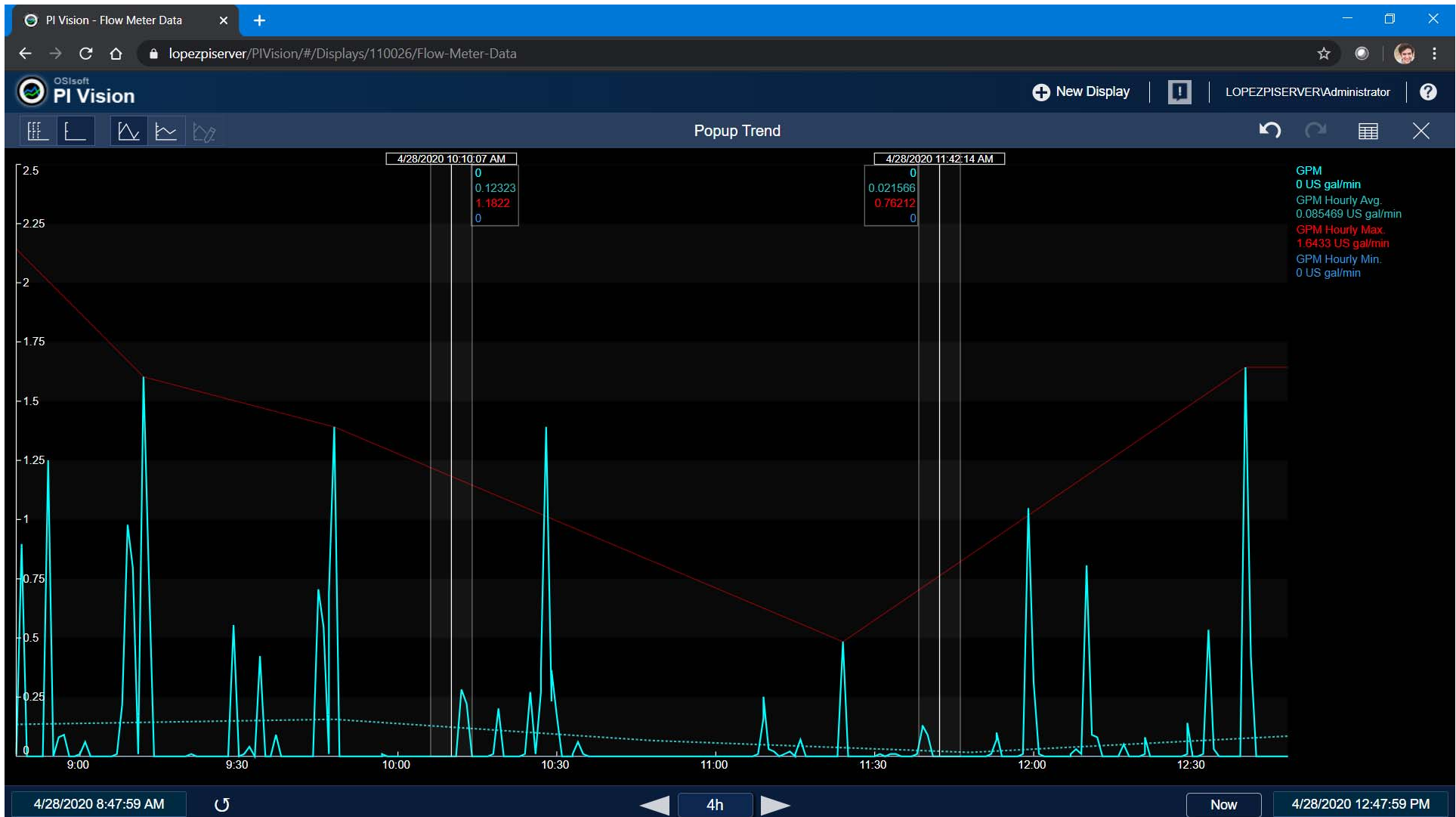
View Reports View Reports Export VBA Migrate

Ready Server Time NUM SCRL

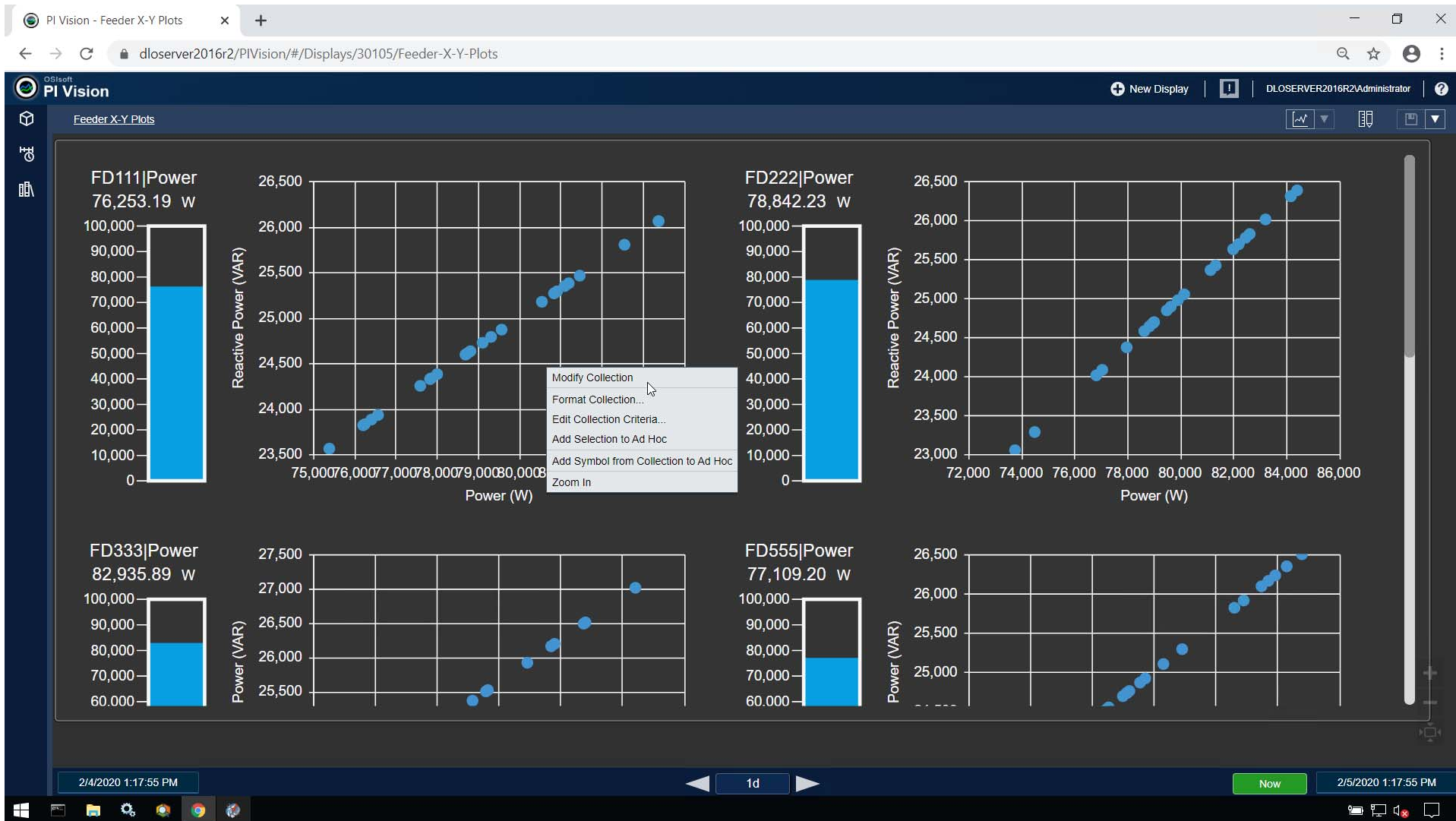
Display Management



Popup Trending



X-Y Plots & Events Tables



PI Vision - Water Usage Anomalies

lopezpiserver/PIVision/#/Displays/120026/Water-Usage-Anomalies

OSIsoft
PI Vision

New Display

LOPEZPISERVER\Administrator

Events

Automatically refresh the list

Flume Water Meter - Anomalous Flow Rate...
4/1/2020 4:39:00 AM - 4/1/2020 4:55:00 AM

Flume Water Meter - Anomalous Flow Rate...

Flume Water Meter - Anomalous Flow Rate...

Flume Water Meter - Anomalous Flow Rate...

Flume Water Meter - Anomalous Flow Rate...

Create Events Table

Edit Search Criteria

Attributes

Flume Water Meter - Anomalous Flow Rate...

Live Data

Usage in Past Minute: 0 US gal

Metadata

Element Name: Flume Water Meter

Element Path: Home\Utilities\Water\Flu...

Timing

Duration: 00:16:00

End Time: 04/01/2020 04:55:00


Start Time: 4/1/2020 4:39:00 AM

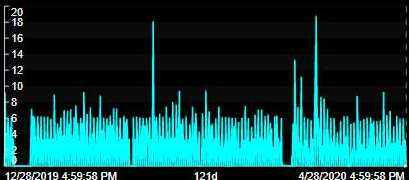
Water Usage Anomalies

Critical Asset: Flow Meter

DATA FROM FLOW METER

CURRENT TIME 4/28/2020 4:59:52 PM





GPM
0 US gal/min

Event Name	Event Type	Start Time	End Time	Duration	Acknowledgment
Flume Water Meter - Anomalous Flow Rate Reading for 5+ Min. - 2020-01-15 00:30:00.000	Anomalous Flow Rate Reading for 5+ Min.	1/15/2020 12:30:00 AM	1/15/2020 12:31:00 AM	1m	Acknowledge
Flume Water Meter - Anomalous Flow Rate Reading for 5+ Min. - 2020-01-18 00:39:00.000	Anomalous Flow Rate Reading for 5+ Min.	1/18/2020 12:39:00 AM	1/18/2020 12:41:00 AM	2m	Acknowledge
Flume Water Meter - Anomalous Flow Rate Reading for 5+ Min. - 2020-01-19 00:46:00.000	Anomalous Flow Rate Reading for 5+ Min.	1/19/2020 12:46:00 AM	1/19/2020 12:48:00 AM	2m	Acknowledge
Flume Water Meter - Anomalous Flow Rate Reading for 5+ Min. - 2020-01-21 04:57:00.000	Anomalous Flow Rate Reading for 5+ Min.	1/21/2020 4:57:00 AM	1/21/2020 5:00:00 AM	3m	Acknowledge
Flume Water Meter - Anomalous Flow Rate Reading for 5+ Min. - 2020-01-29 00:30:00.000	Anomalous Flow Rate Reading for 5+ Min.	1/29/2020 12:30:00 AM	1/29/2020 12:32:00 AM	2m	Acknowledge
Flume Water Meter - Anomalous Flow Rate Reading for 5+ Min. - 2020-01-30 00:20:00.000	Anomalous Flow Rate Reading for 5+ Min.	1/30/2020 12:20:00 AM	1/30/2020 12:22:00 AM	2m	Acknowledge
Flume Water Meter - Anomalous Flow Rate Reading for 5+ Min. - 2020-02-06 00:23:00.000	Anomalous Flow Rate Reading for 5+ Min.	2/6/2020 12:26:00 AM	2/6/2020 12:26:00 AM	3m	Acknowledge
Flume Water Meter - Anomalous Flow Rate Reading for 5+ Min. - 2020-02-08 00:55:00.000	Anomalous Flow Rate Reading for 5+ Min.	2/8/2020 12:56:00 AM	2/8/2020 12:56:00 AM	1m	Acknowledge
Flume Water Meter - Anomalous Flow Rate Reading for 5+ Min. - 2020-02-17 00:10:00.000	Anomalous Flow Rate Reading for 5+ Min.	2/17/2020 12:11:00 AM	2/17/2020 12:11:00 AM	1m	Acknowledge
Flume Water Meter - Anomalous Flow Rate Reading for 5+ Min. - 2020-02-19 00:15:00.000	Anomalous Flow Rate Reading for 5+ Min.	2/19/2020 12:20:00 AM	2/19/2020 12:20:00 AM	5m	Acknowledge
Flume Water Meter - Anomalous Flow Rate Reading for 5+ Min. - 2020-02-23 00:00:00.000	Anomalous Flow Rate Reading for 5+ Min.	2/23/2020 12:00:00 AM	2/23/2020 12:24:00 AM	24m	Acknowledge
Flume Water Meter - Anomalous Flow Rate Reading for 5+ Min. - 2020-02-23 00:39:00.000	Anomalous Flow Rate Reading for 5+ Min.	2/23/2020 12:39:00 AM	2/23/2020 12:42:00 AM	3m	Acknowledge
Flume Water Meter - Anomalous Flow Rate Reading for 5+ Min. - 2020-02-23 00:47:00.000	Anomalous Flow Rate Reading for 5+ Min.	2/23/2020 12:47:00 AM	2/23/2020 12:48:00 AM	1m	Acknowledge

12/28/2019 4:59:58 PM121d4/28/2020 4:59:58 PM

Configure Table...

Apply Time Range

Event Details...

Compare Similar Events by Name...

Compare Similar Events by Type...

12/28/2019 4:59:58 PM

121d

Now

4/28/2020 4:59:58 PM

Configure Table

☒ Event Type

☒ Start Time

☒ End Time

☐ Severity

☒ Duration

☐ Reason

☐ Acknowledged By

☐ Acknowledged Date

☒ Acknowledgment

Default Sort Column

Start Time

Default Sort Direction

Ascending

Style

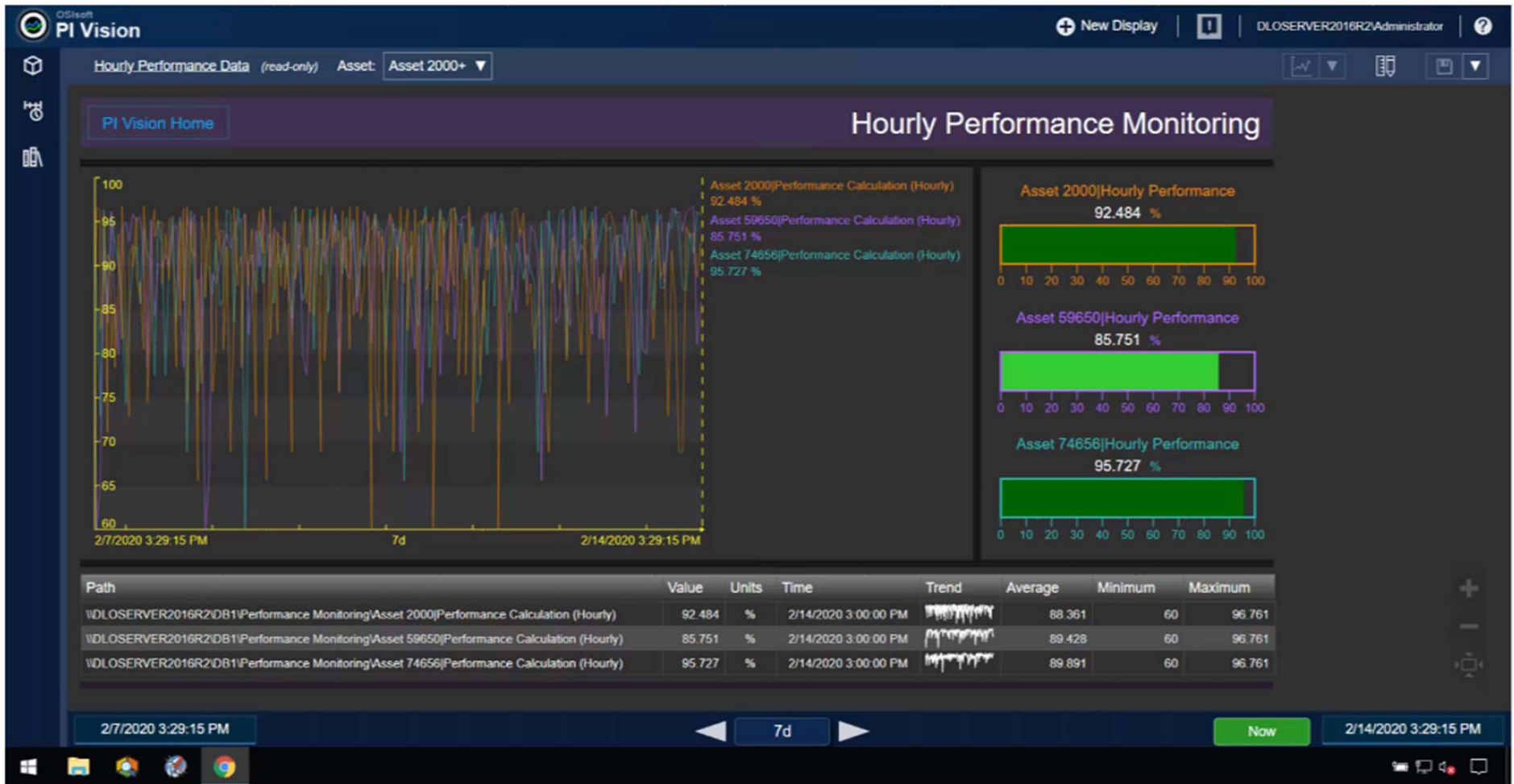
Search Criteria

DatabaseHome

Time RangeTimebar Duration

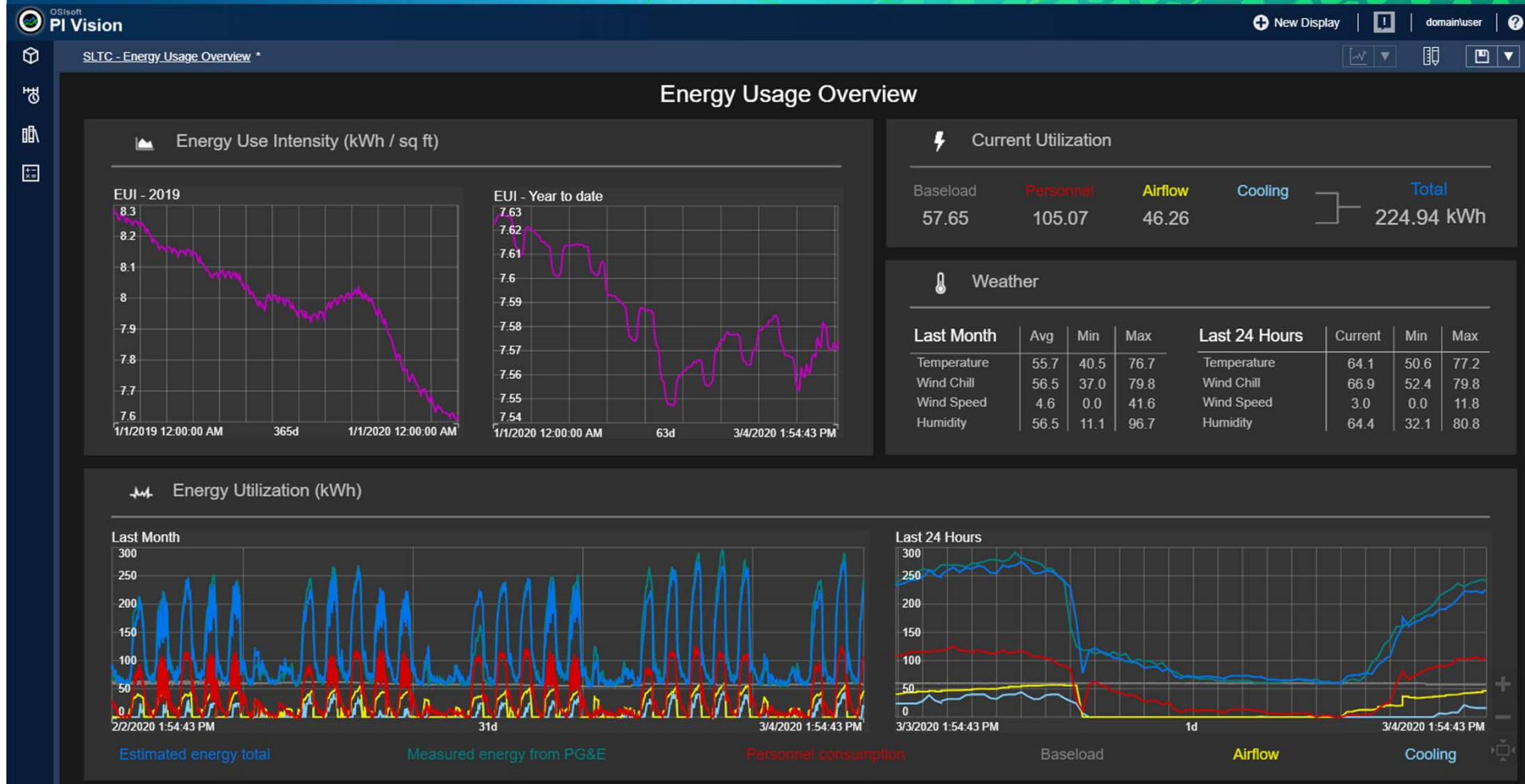
Usability Enhancements



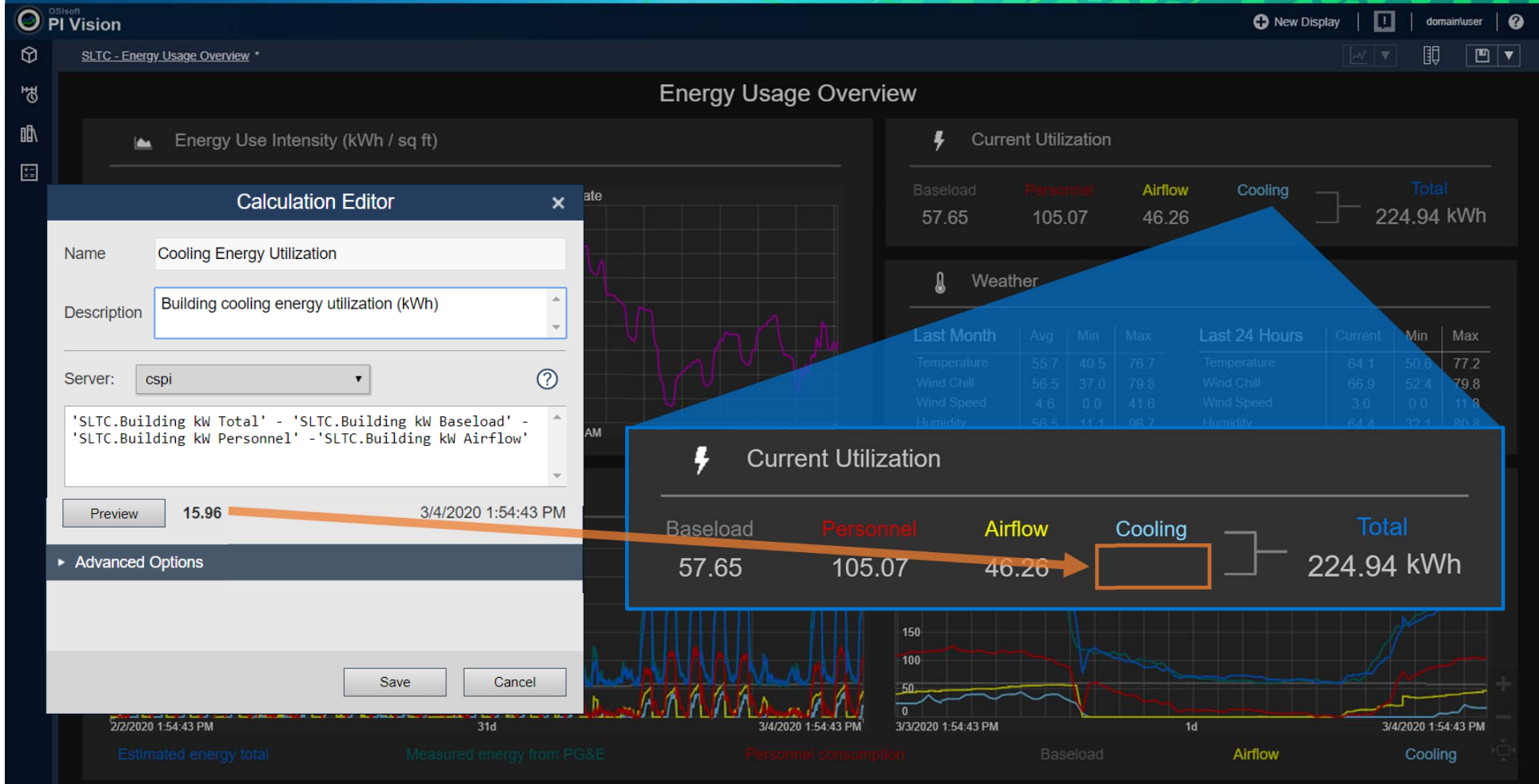


What's Coming in PI Vision 2020?

Multiple Time Contexts within a Single Display



Analyze Data On the Fly with Ad Hoc Calculations



PI Vision Roadmap

PI Vision 2019 has been released!



Developing Now

Ad Hoc Trending

Analyze data across displays and investigate issues on-the-fly in an ad hoc workspace

Released

PI ProcessBook Migration

A path forward for PI ProcessBook users

Released

Ad Hoc Calculations

Quick local calculations for data analysis/troubleshooting

Multiple Time Contexts

View and analyze data over different time ranges on the same display

Additional Functionality for PI ProcessBook Migration

Migration of data set calculations, multiple time contexts, and additional symbol configuration



Considering Next

Symbol Enhancements

Enhancements to trends (data markers, plot titles, and more) and multi-state capabilities.

Collaborative Display Editing

Share edit access to displays

Performance Improvements

Faster display loading, more responsive display interactions



Researching Future

Offline Display Management

Enhanced Event Frames Visualization

Improved Mobile Experience

Last Updated: 2020-03

Roadmap themes: [Manageable Systems](#) | [Seamless Infrastructure](#) | [Increased Value & Scope of Data](#)

Want to See More?

Filter by status

Hot **Top ideas** New Category **STARTED / IN DEVELOPMENT (1)**


My feedback

338
votes
Vote

Create on the fly calculations

Be able to create "on the fly" calculations similar to PI ProcessBook datasets.

32 comments · Analytics / Calculations · Flag idea as inappropriate... · Admin →


 **STARTED / IN DEVELOPMENT** · **Ryan McElean** (Product Manager, OSIsoft) responded

In the upcoming PI Vision 2020 release, this functionality is being added that will allow for creating calculations on the fly within PI Vision.


311
votes
Vote

Support multiple time ranges for trends on a display


Have the ability to support multiple time ranges for trends on a display. For example a trend might be configured as showing the last 8 hours, another one as the last 7 days, and another one the last month.

 Coresight 2015 lock in tim...
6 KB

15 comments · Ad Hoc Analysis · Flag idea as inappropriate... · Admin →

 **STARTED / IN DEVELOPMENT** · **Amit Dutta** (Admin, OSIsoft) responded

Support for multiple time ranges for trends on a display is currently in development for the PI Vision 2020 release.



What
Questions
Do You Have?

Feel Free to Follow Up With Questions!



- Dan Lopez
- Senior Pre-Sales Engineer
- OSIsoft
- dlopez@osisoft.com

