

Data Collection and Analytics for Assuring Water Quality

Devin Doring
Brandon Lake



The City of Salem



The Santiam River



Detroit Lake, Oregon

Source:
Zach Urness/Statesman Journal





National Oceanic and Atmospheric
Administration

U.S. Department of Commerce

What is a harmful algal bloom?

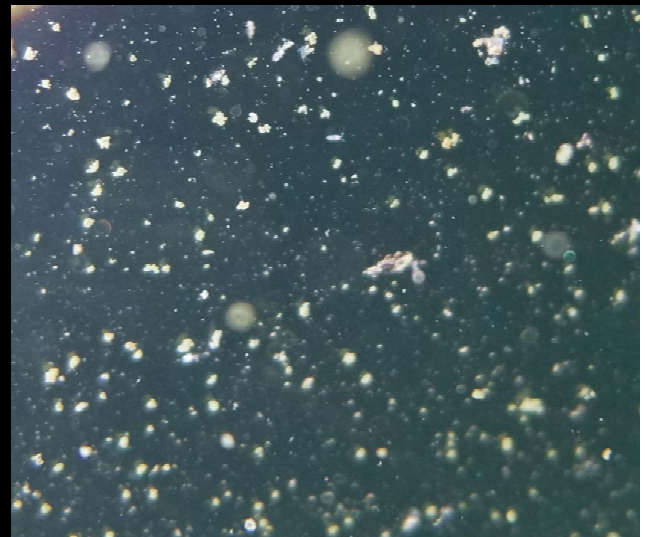
Sometimes tiny algae can cause big problems

Oceans & Coasts | [harmful algal blooms \(HABs\)](#)

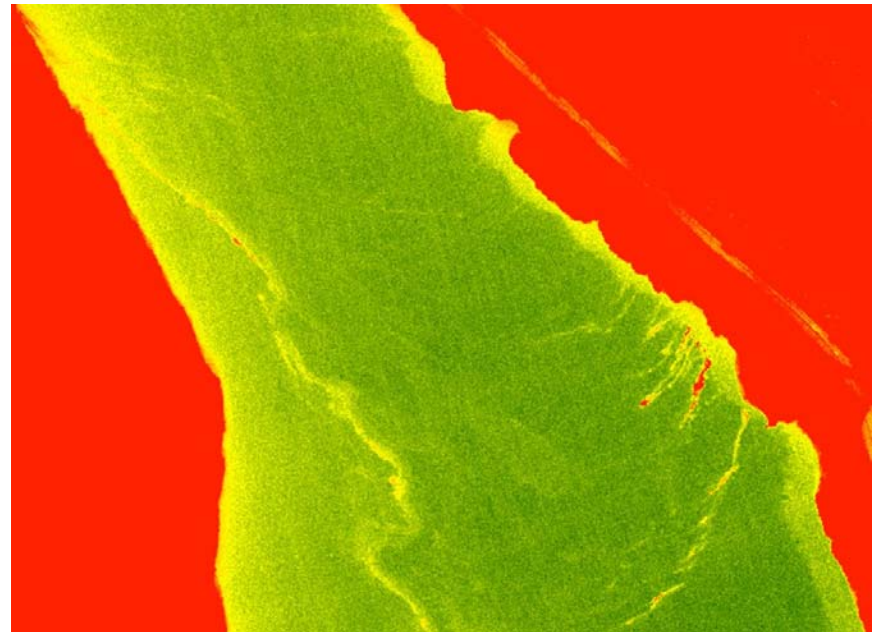
SHARE



Harmful algal blooms, or HABs, occur when colonies of algae — simple plants that live in the sea and freshwater — grow out of control and produce toxic or harmful effects on people, fish, shellfish, marine mammals and birds. The human illnesses caused by HABs, though rare, can be debilitating or even fatal.

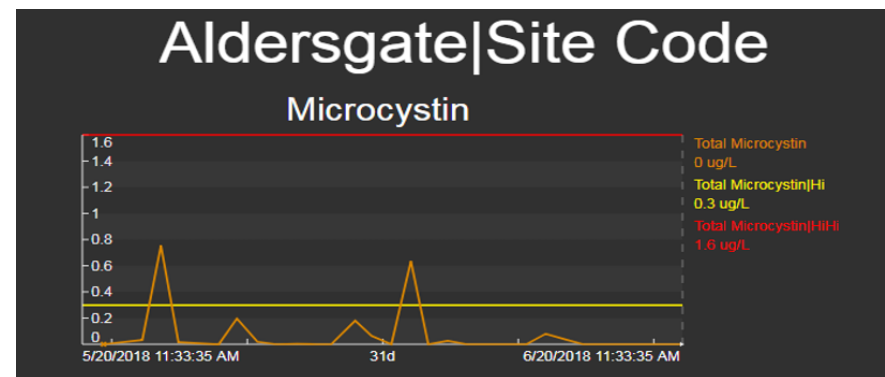


Sometimes you can't see algae blooms

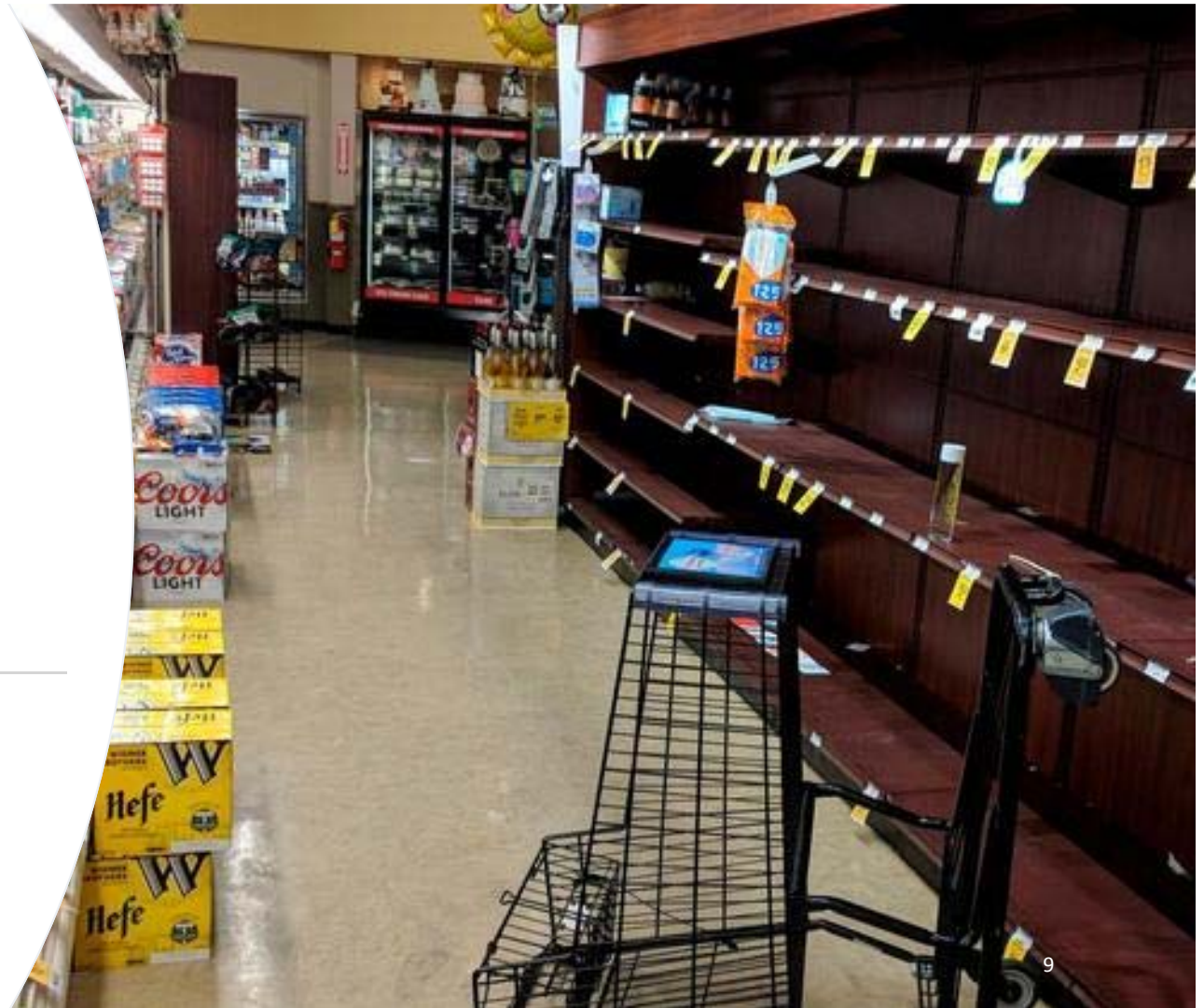


May and June 2018

- EPA Guideline is 0.3 ug/L for a health advisory for sensitive populations. Children, elderly, nursing mothers.
- More a communication challenge than a technical one. Panic created by Emergency Alert.



The bottled-
water aisle,
Salem area
store, circa
2018



All Hands-on Board...24x7

- All city staff manning water distribution stations
- National Guard activated
- Experts contacted nation-wide
- Opportunity to leverage the PI System for a predictive HAB solution
- Oregon State engaged, partnered with The Prediction Lab



Good Stewardship thru a Predictive System

Traditional sampling 24 hour turnaround

Lab kits are very expensive, \$1000/sample
x multiple samples/day x 365 days

Need to adjust treatment before toxins
arrive

Prediction is technologically and
scientifically feasible

Machine learning and root cause analysis
are available



The Prediction Lab & The City of Salem

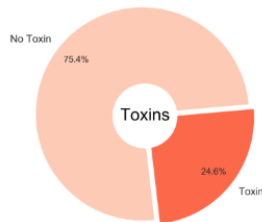
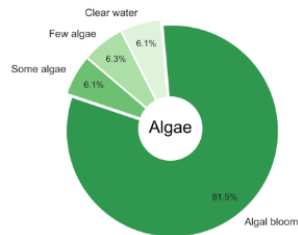


Detroit Lake Predictions

An initiative to care for our water source

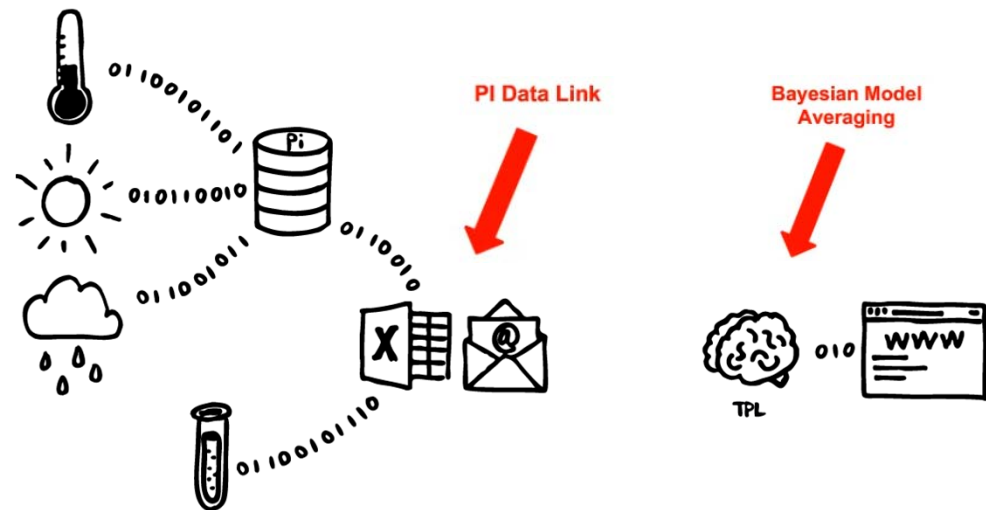
Bloom Forecast July 9 - July 16

Our models suggest that blooms are still very likely at Detroit Lake, and that there remains a chance that toxins will occur.



First System Architecture

<https://thepredictionlabllc.github.io/detroit-lake-predictions/>



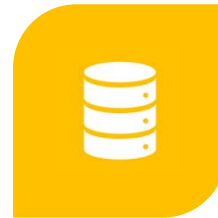
Joint Success Story



CITY OF SALEM



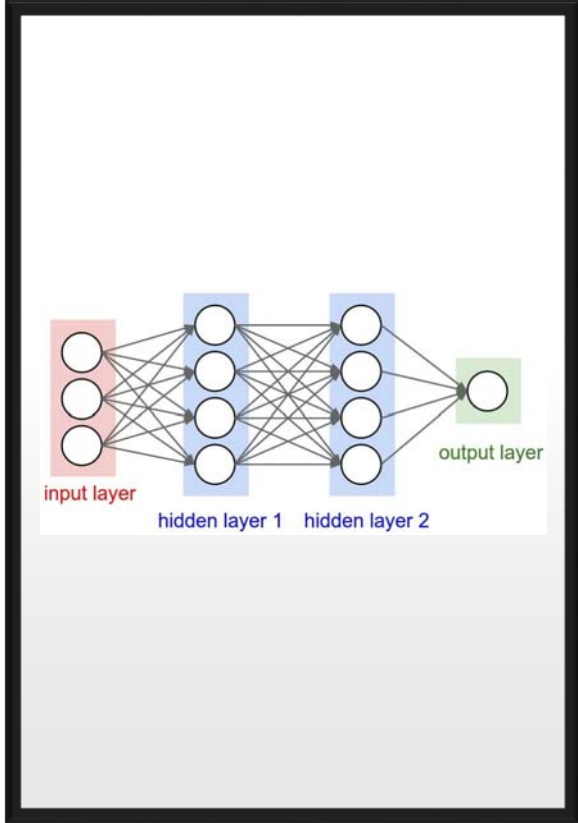
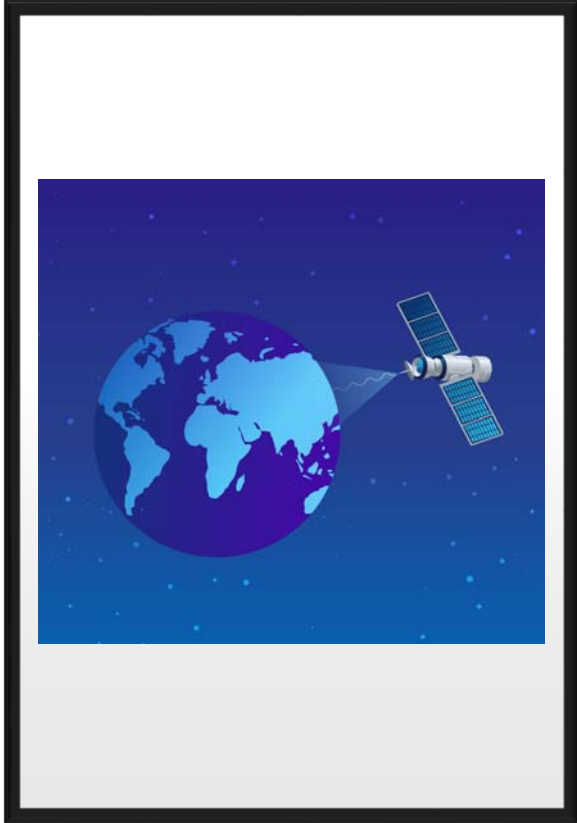
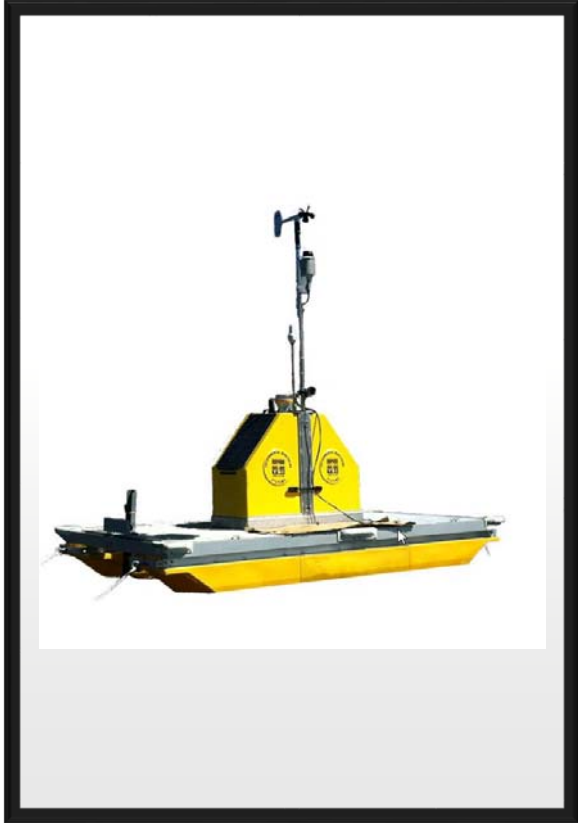
CASNE
ENGINEERING

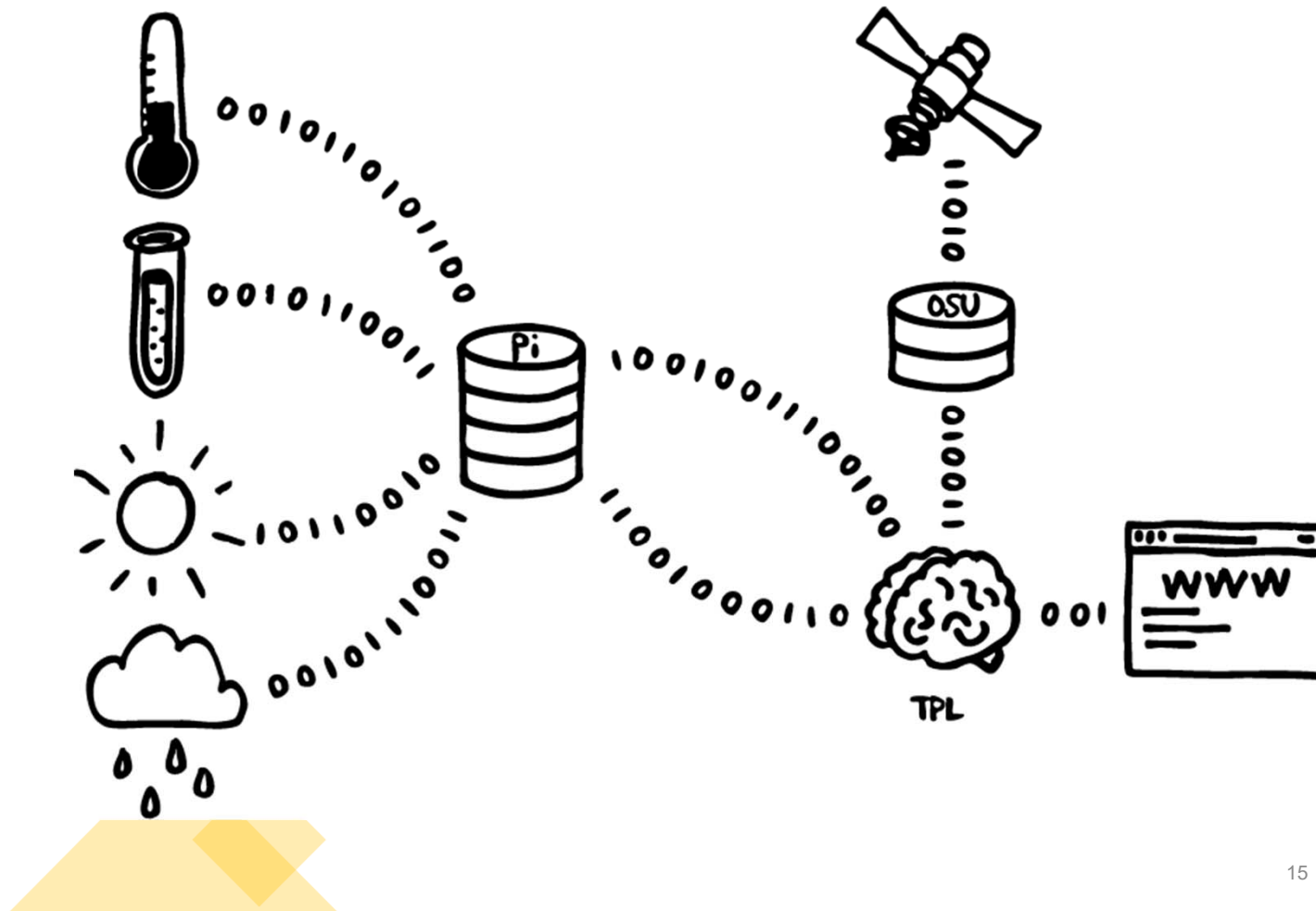


OSISOFT



THE PREDICTION
LAB (TPL)





Technological Challenge

Data is needed for predictive analytics

Environmental data (e.g., weather) is available, but wasn't integrated

System / sensor data was not available



Using the PI System, Casne integrated new data sources

Satellite imagery from NOAA flyovers

Weather data

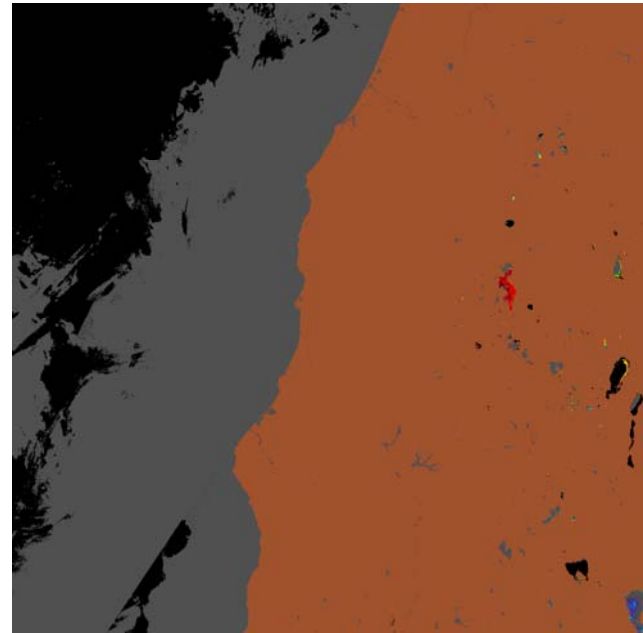
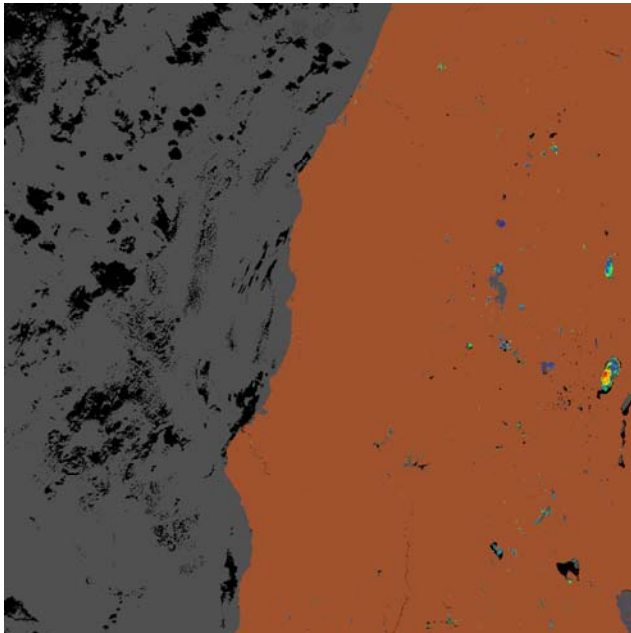
Floating data collection pontoon

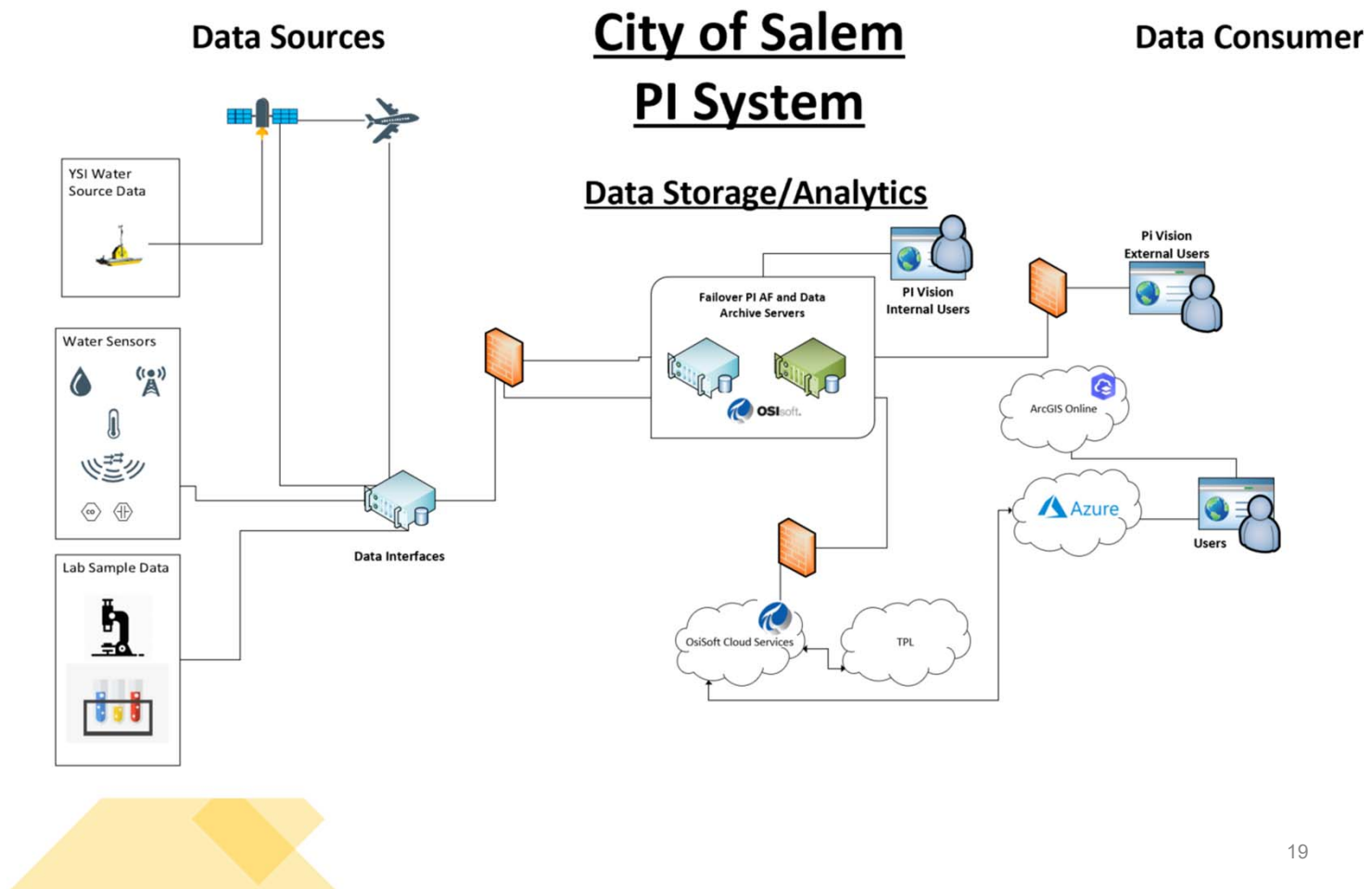
Modeling program inputs and outputs

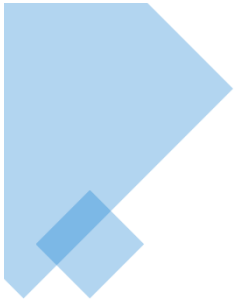


Story: Pontoon System Integration

Satellite Image Data







Utility Management Challenge

- The public deserves access to safe and reliable drinking water.
- The climate is changing. HAB is not going away.
- Cyanotoxins will (very likely) be a regulated contaminate in the future for water systems.



CHALLENGES

- Harmful Algal Bloom (HAB) threatens City of Salem drinking water supply
- Integrated tech and scientific solution required prediction and detection

SOLUTION

- The PI System acts as a foundation for the data
- Casne Engineering integrated numerous new data sources
- Modeling algorithms from TPL are integrated
- HAB events and cycles are seen earlier

BENEFITS

- Avoid drinking water quality surprises
- Predict and proactively manage future HAB events



“

Casne Engineering successfully integrated all of the systems we needed to address our HAB challenge. The PI System, field sensors, and a predictive model.

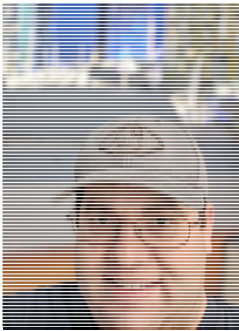
”



Future Priorities and Plans

- External facing visualizations
 - Field engineering
 - Public access dashboard
- Automated, high-availability
 - PI Cloud data storage
 - Environmental data refresh
 - Science partner data sharing
- Actionable intelligence based on prediction
 - Advanced warning for possible HAB events
 - Notification and Alerts

Thank you



Devin Doring
City of Salem
ddoring@cityofsalem.net



Brandon Lake
Casne Engineering
brandon.lake@casne.com

Questions?

Please wait for
the **microphone**

State your
name & company



Please remember to...

Complete Survey!

Navigate to this session in
mobile agenda for survey

