

AVEVA PI WORLD

Our Integrated Portfolio Roadmap

Digital Insights for Industrial Innovation

Rob McGreevy, EVP, Operations Business

Rónán de Hooge, EVP, Information

The AVEVA logo is displayed in white, bold, sans-serif capital letters. It is positioned in the bottom right corner of the slide, partially overlapping a decorative graphic of glowing, concentric, multi-colored arcs (blue, orange, and purple) that sweep across the right side of the image.

Bringing together two trusted, world-class software experts



AVEVA

Driving transformation for over 20,000 customers with our partner network



Energy



Power



Food, Bev, CPG,
Life Sciences



Chemicals



Infrastructure



Mining



Marine



EPC

ExxonMobil



nationalgrid



BASF



DAEWOO



HYUNDAI
HEAVY INDUSTRIES CO., LTD.



Irving Shipbuilding, Inc.

Kawasaki
Kawasaki Heavy Industries, Ltd.

Petrofac

wood.

Worley
energy | chemicals | resources

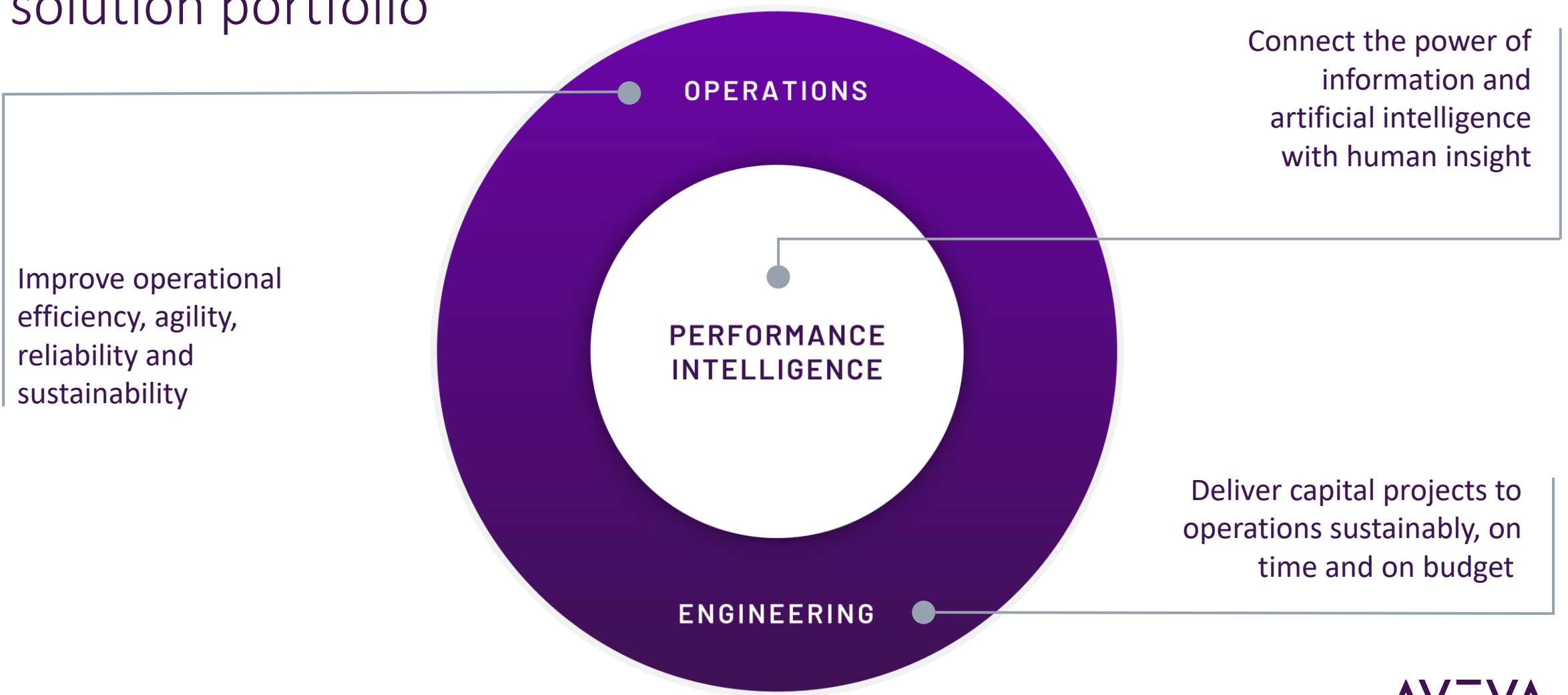
NPCC
شركة النفط الوطنية

MCDERMOTT

5,500 +
Partners



Our comprehensive solution portfolio



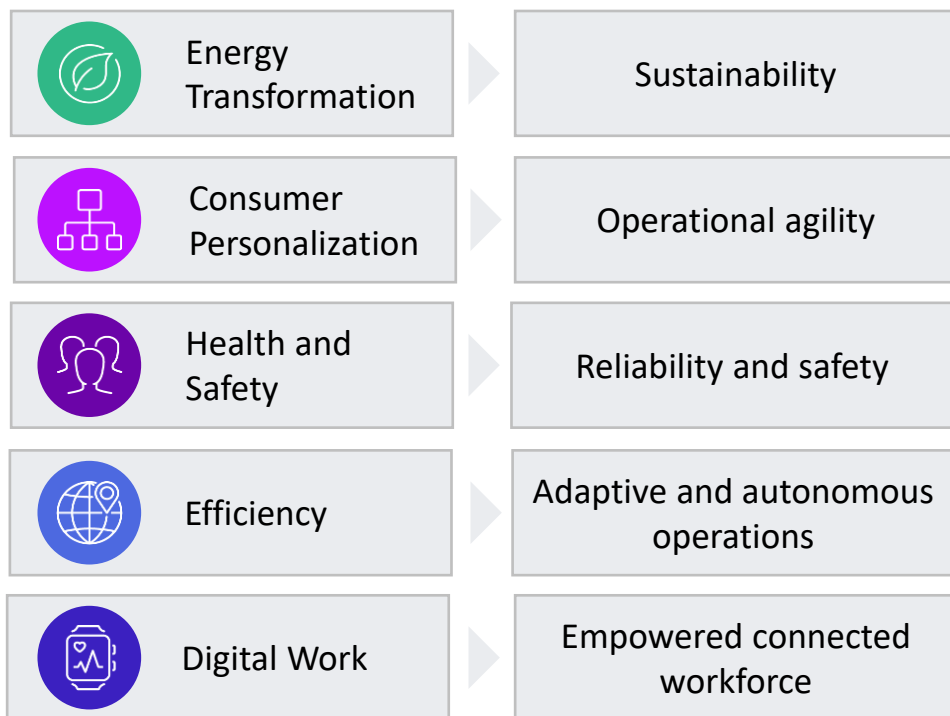
Bringing together two trusted, world-class software experts

Delivering end-to-end customer value with best-of-breed industrial software

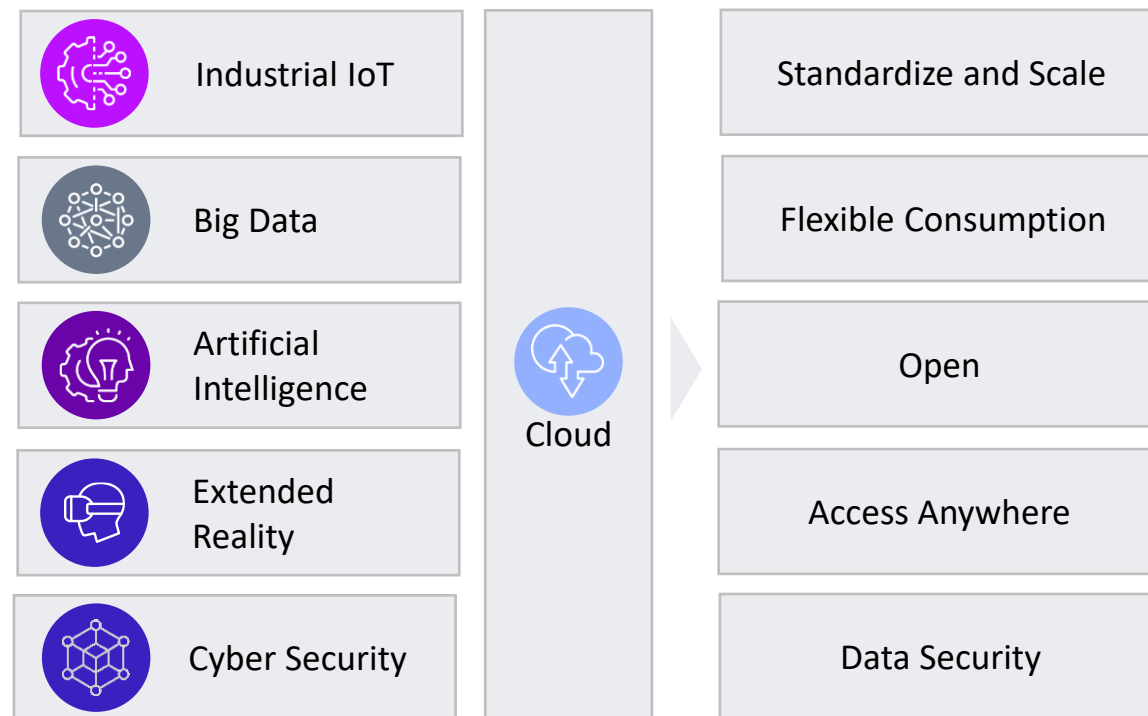


Our portfolio strategy is shaped by the market environment

Industry Imperatives

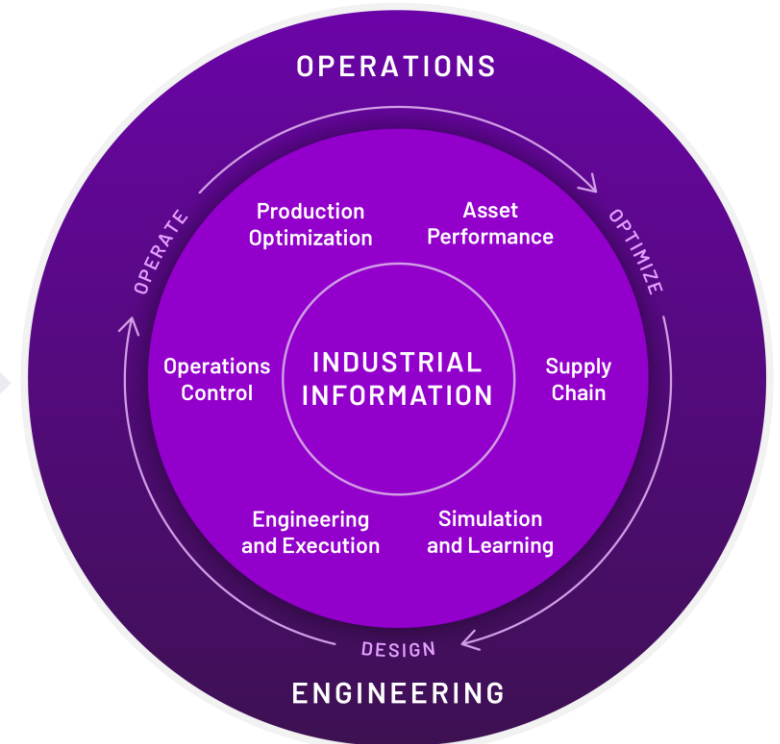
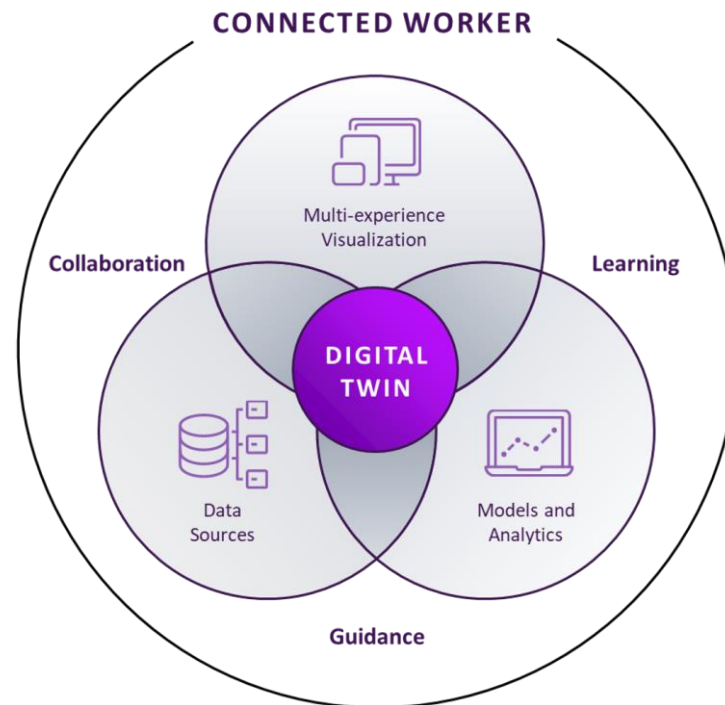
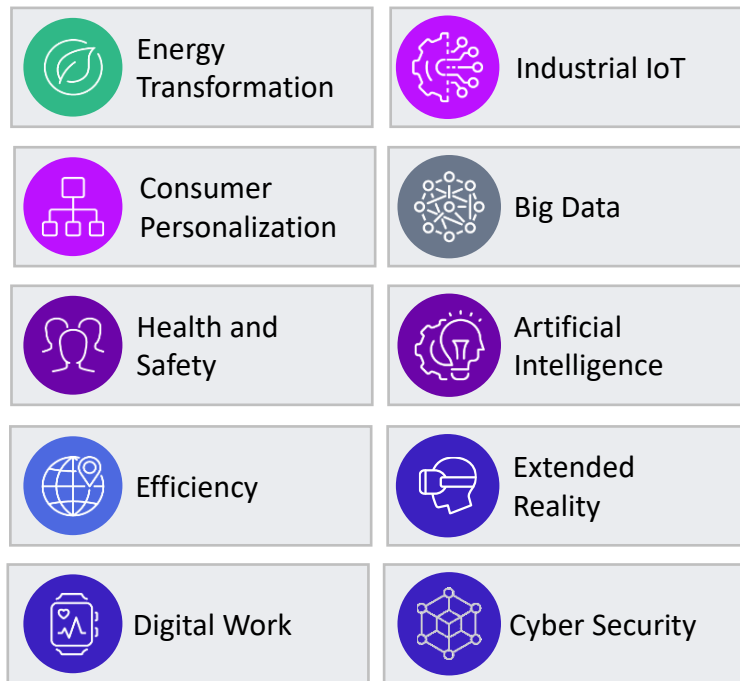


Technology Enablers



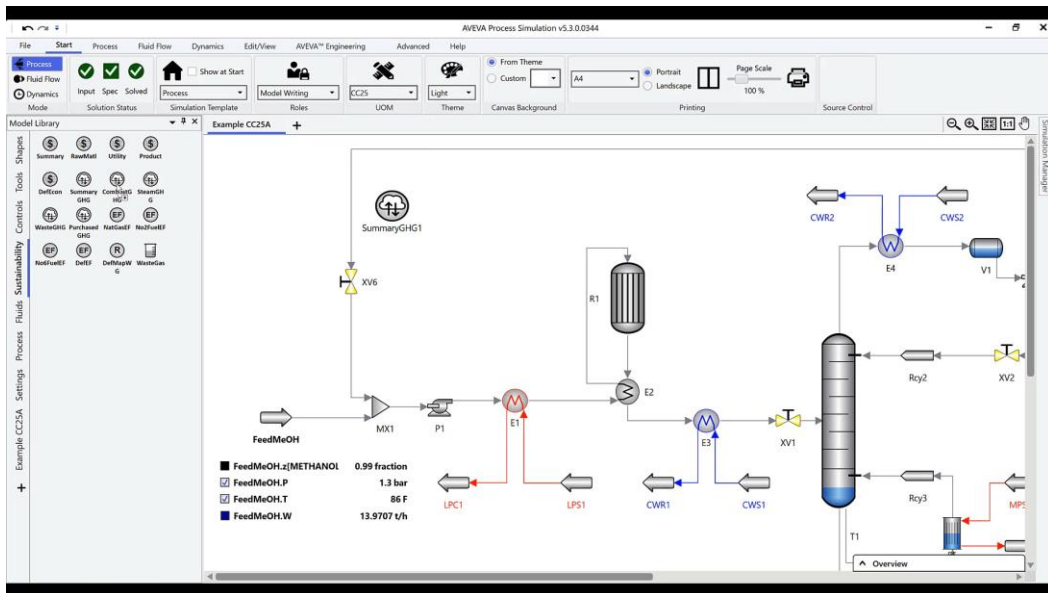
Complete digital thread to empower the connected worker

Industry and Technology Imperatives

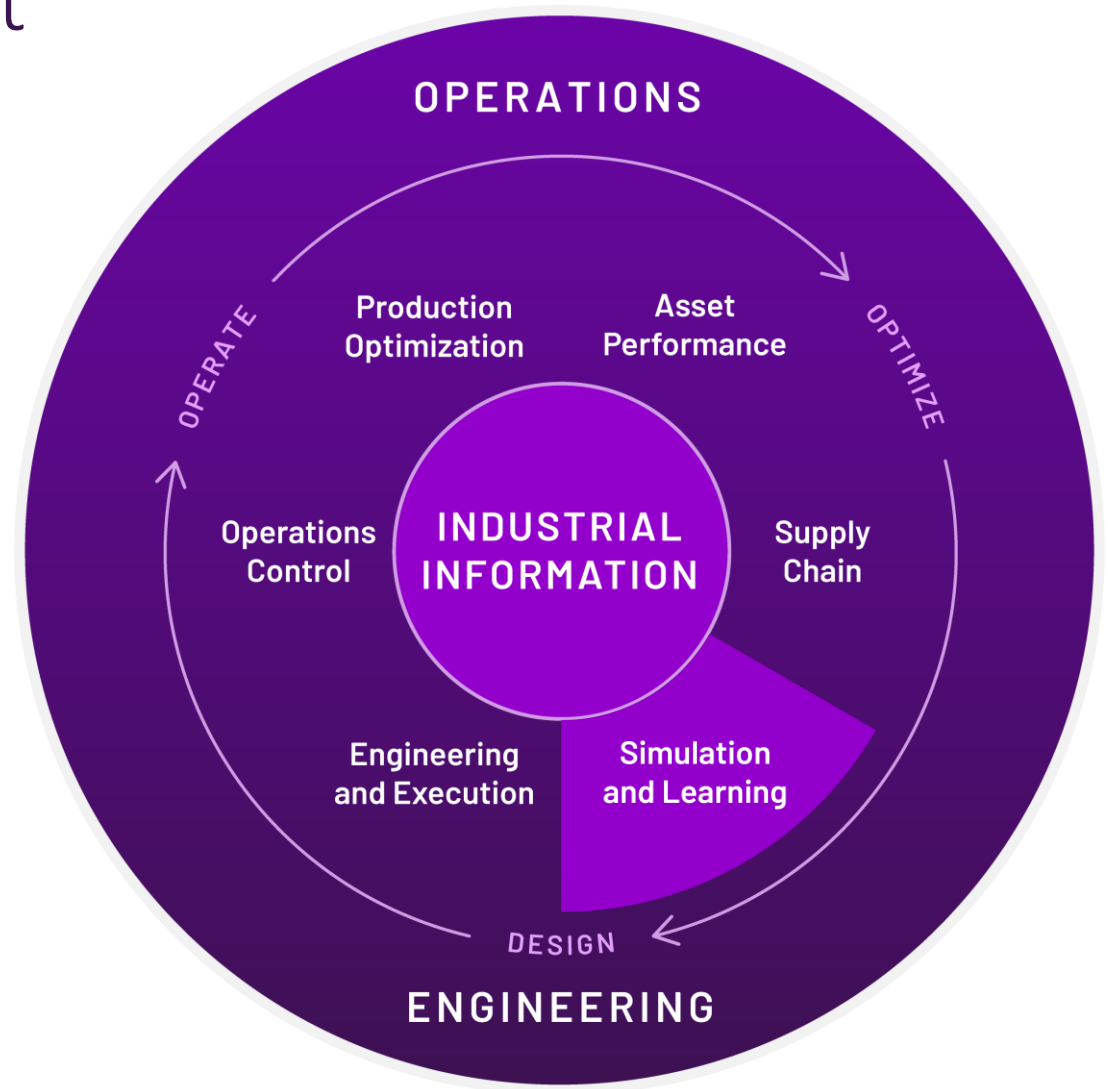


Simulation and Learning Highlight

Best-in-class steady state, fluid flow and dynamic process modeling simulators and unified learning



Roadmap: Deliver Sustainability (Energy Transition, Blue/Green/Grey H2 and CO2 sequestration) process modeling and predictive optimization

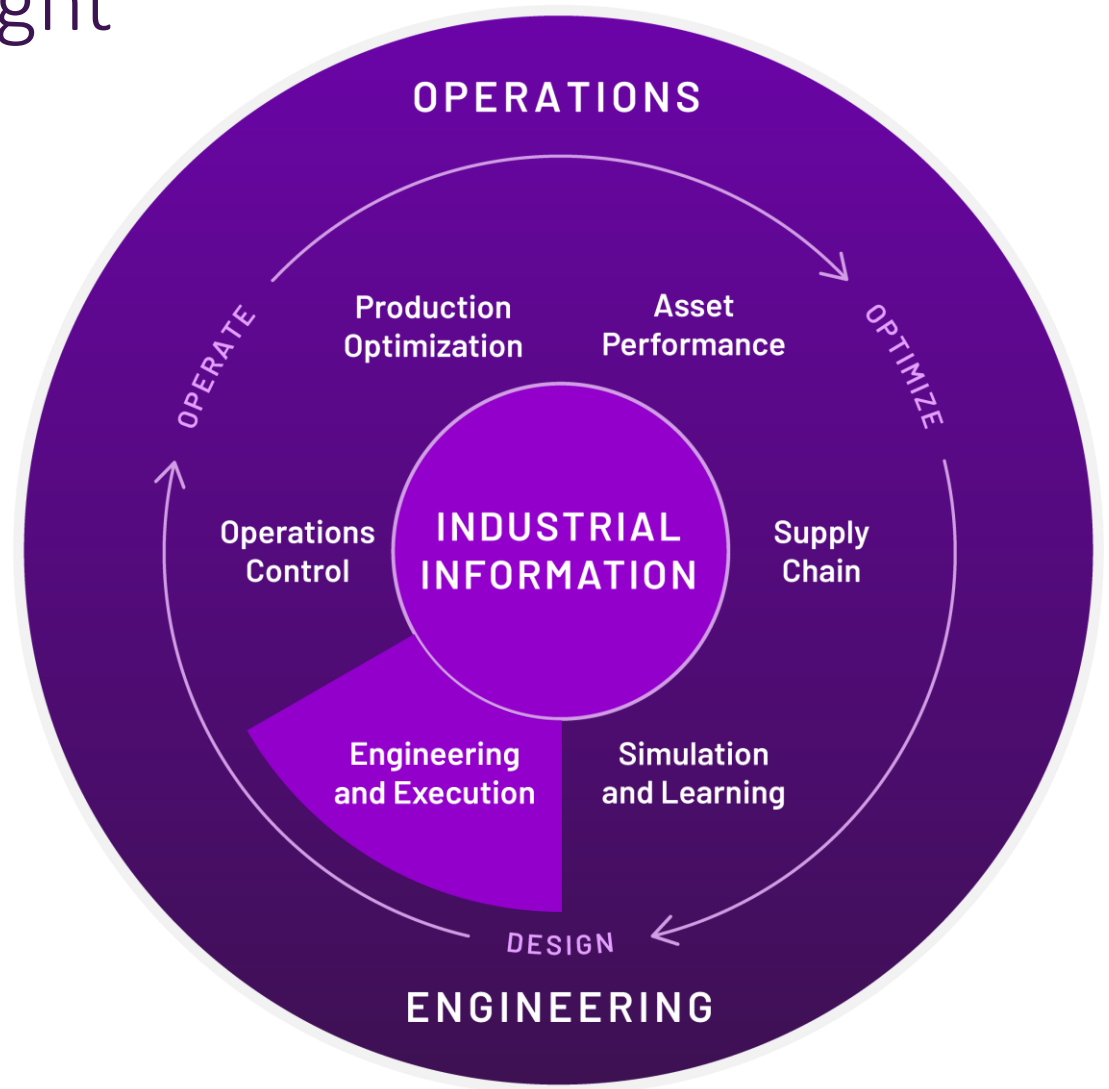


Engineering and Execution Highlight

Best-in-class 3D design and materials management



Roadmap: Deliver Process, Mechanical, Instrumentation, 1D Electrical Engineering Data, 2D Drawings, 3D Design, and 4D construction management





Southern Company Power works with AVEVA to implement digital twin for all assets resulting in trusted, accurate data to drive improvements.

30% Reduction In engineering hours

10% savings in total installed cost

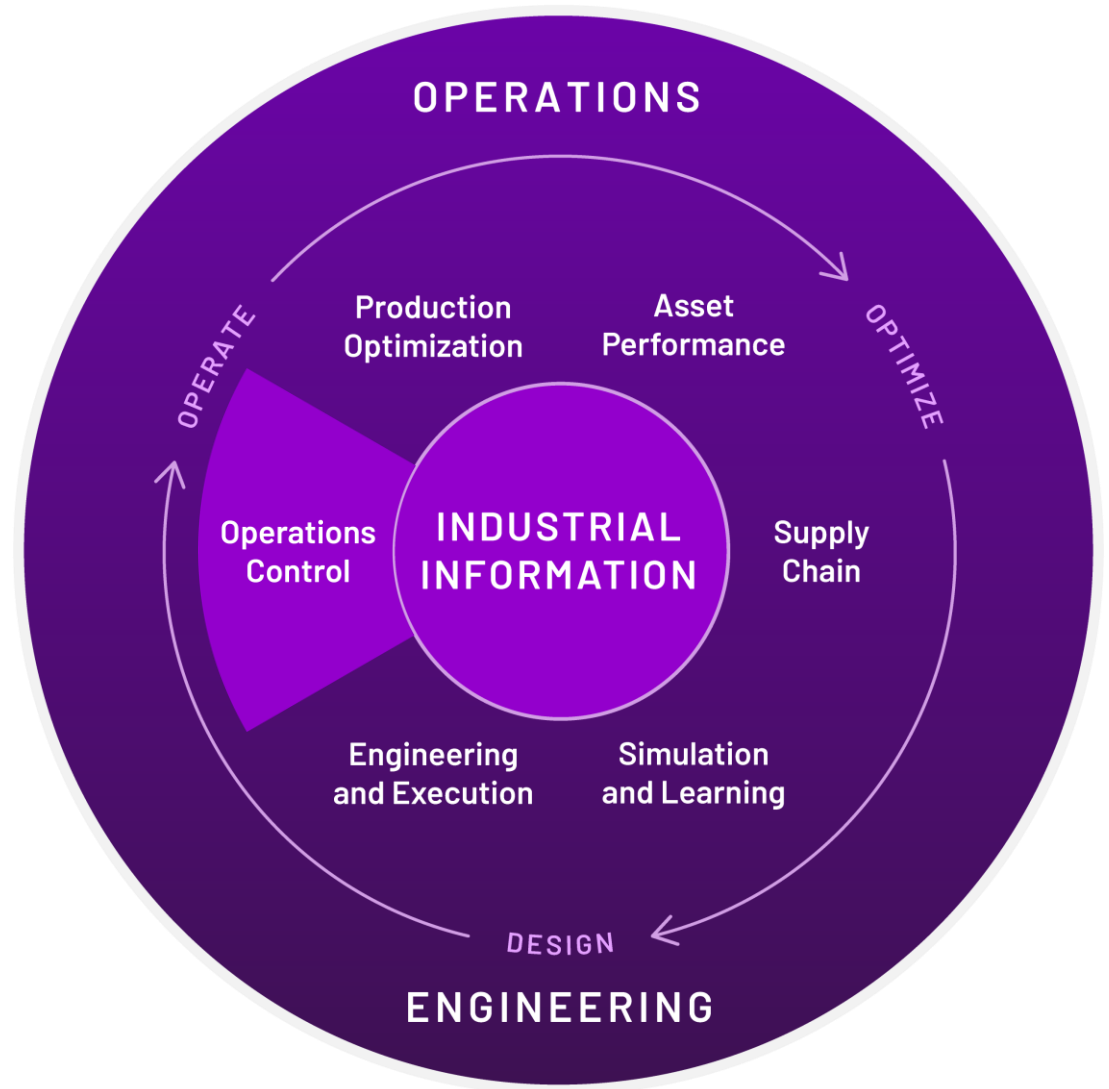


Operations Control Highlight

Market-leading Edge to Enterprise HMI and SCADA



Roadmap: Edge to enterprise subscription offers, hybrid cloud deployment, cloud development tools and industry templates



Nutrien

Improved operational efficiency using
PI System integration with AVEVA Unified
Operations Center

Combined real-time data enhanced
with AI empowers the team to
proactively troubleshoot and problem
solve operational challenges in potash
and nitrate production

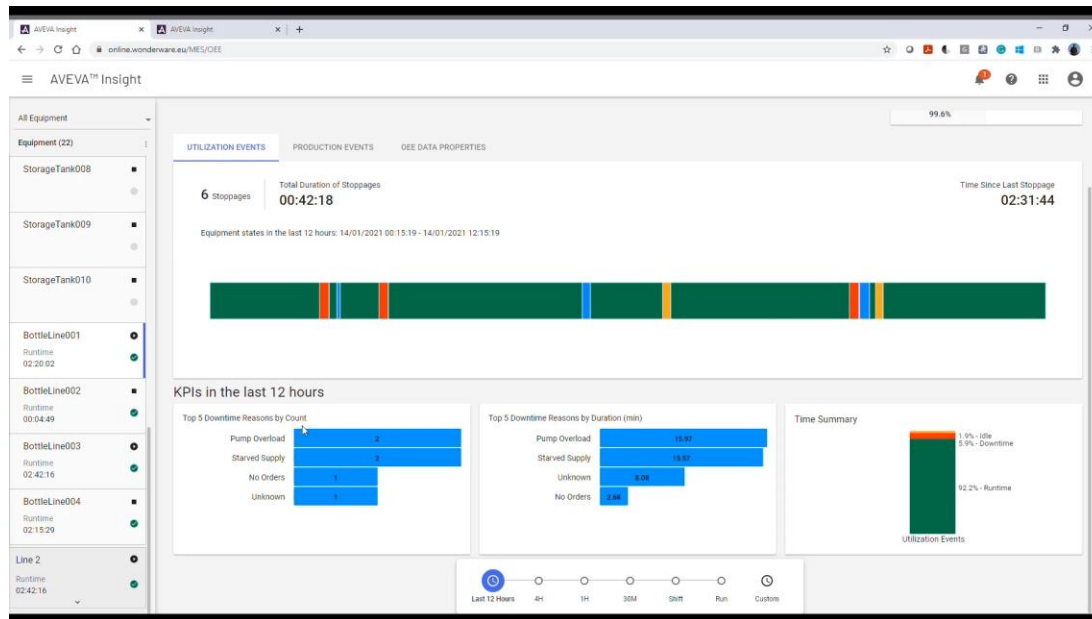
Better cross-team collaboration using
shared data

Streamlined data-transfer between
teams and plants

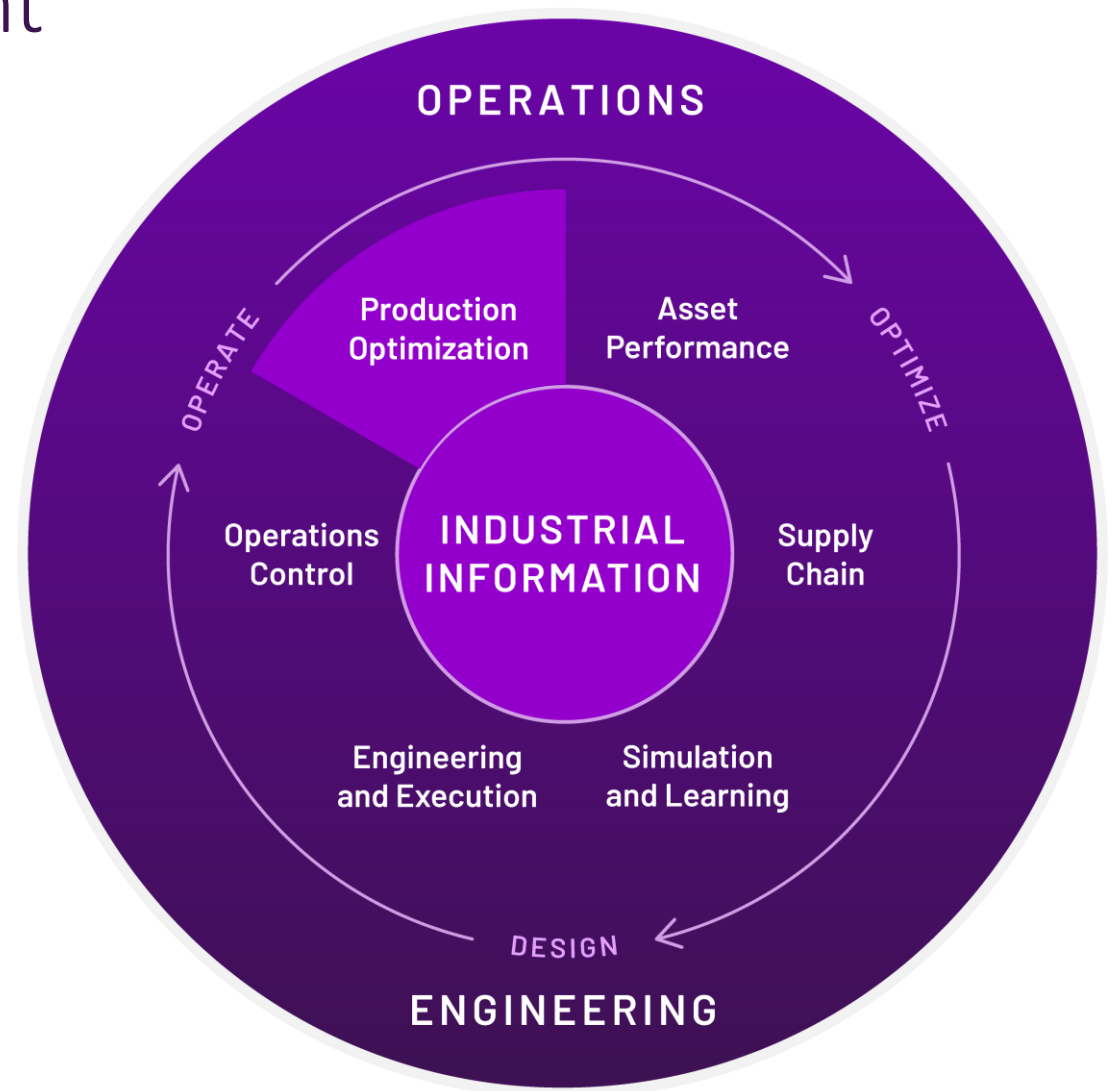


Production Optimization Highlight

End-to-end production optimization



Roadmap: Continue Model-Driven MES with simpler, templated deployments and accelerate hybrid cloud through AVEVA Connect + AVEVA Insight for visualization

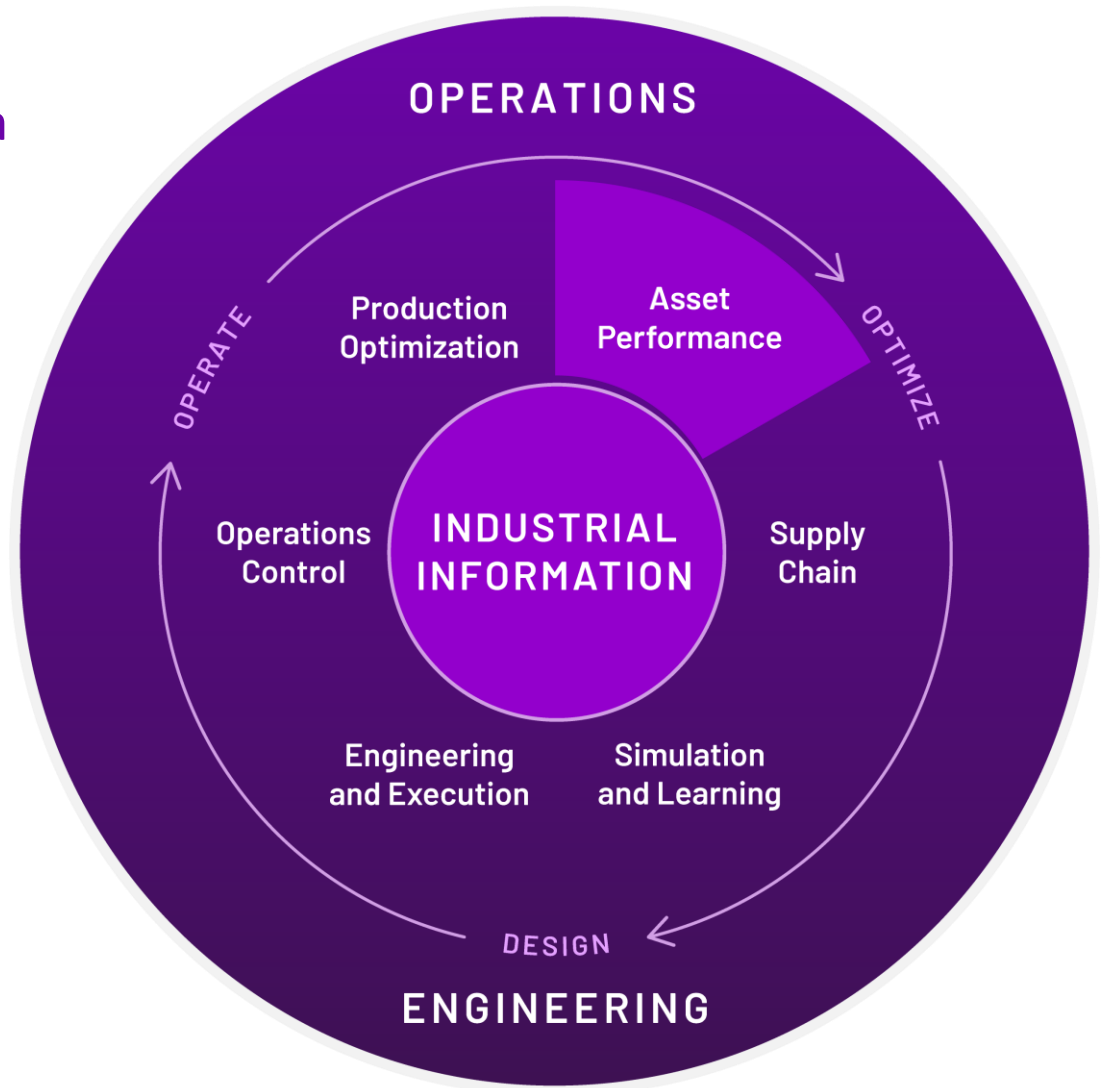


Asset Performance Highlight

Optimize asset reliability and maintenance execution

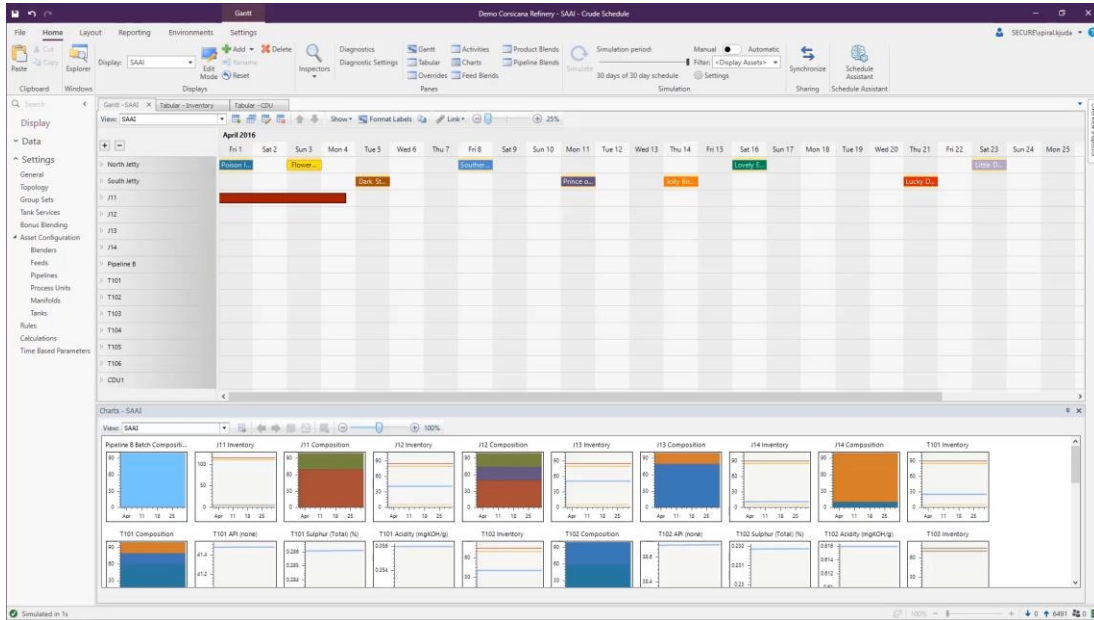


Roadmap: AVEVA Insight for cloud use cases and native predictive analytics, unification of multiple mobile solutions

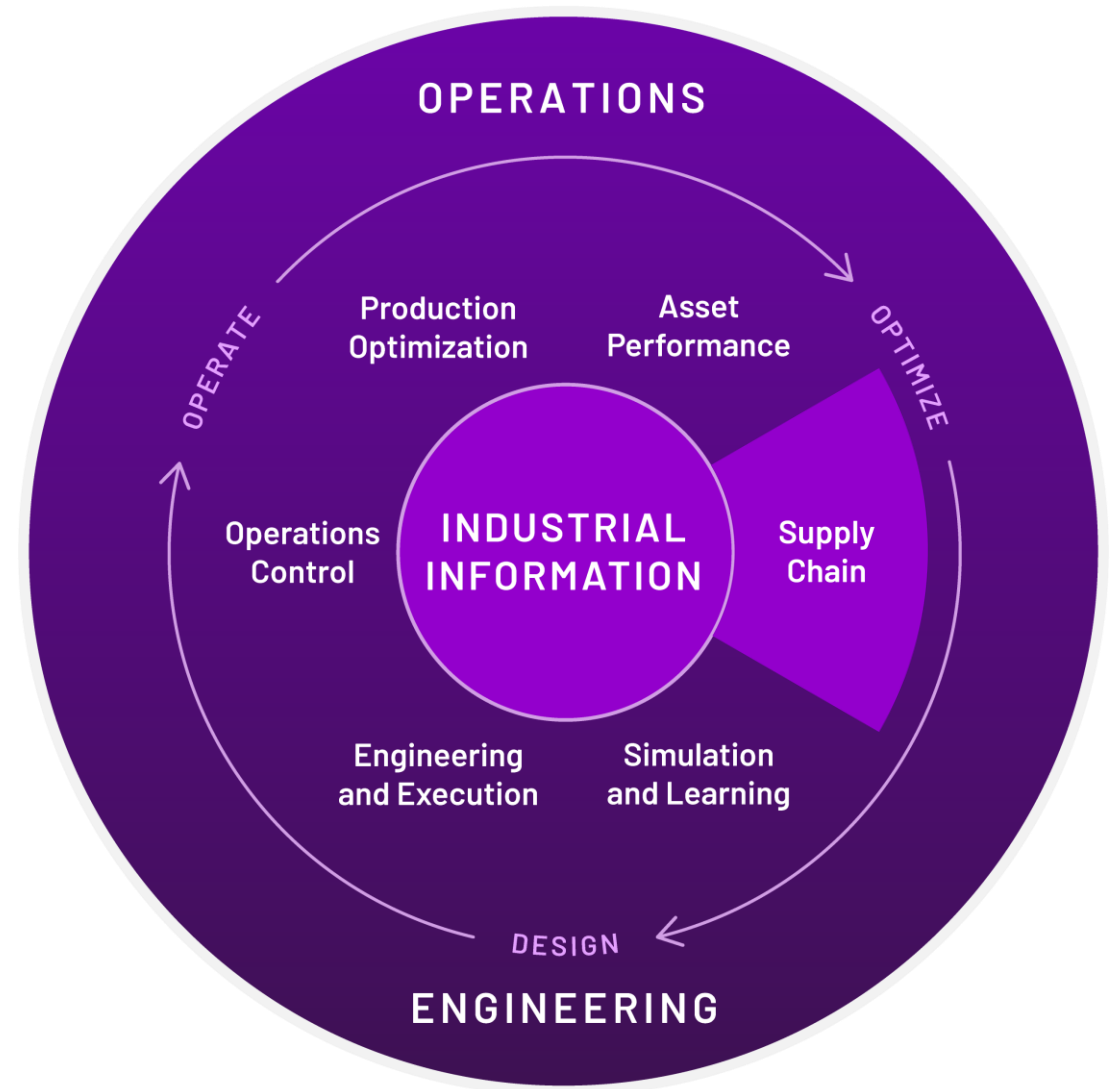


Supply Chain Highlight

End-to-end process optimization

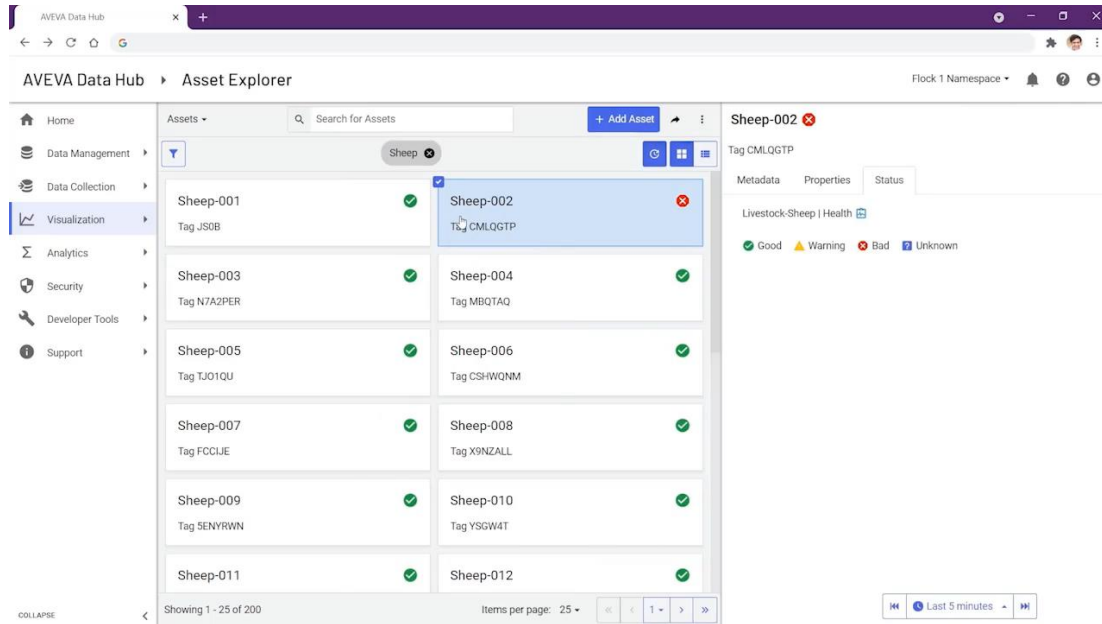


Roadmap: Strengthen scheduling capabilities with AI, and accelerate hybrid cloud deployment through AVEVA Connect cloud platform

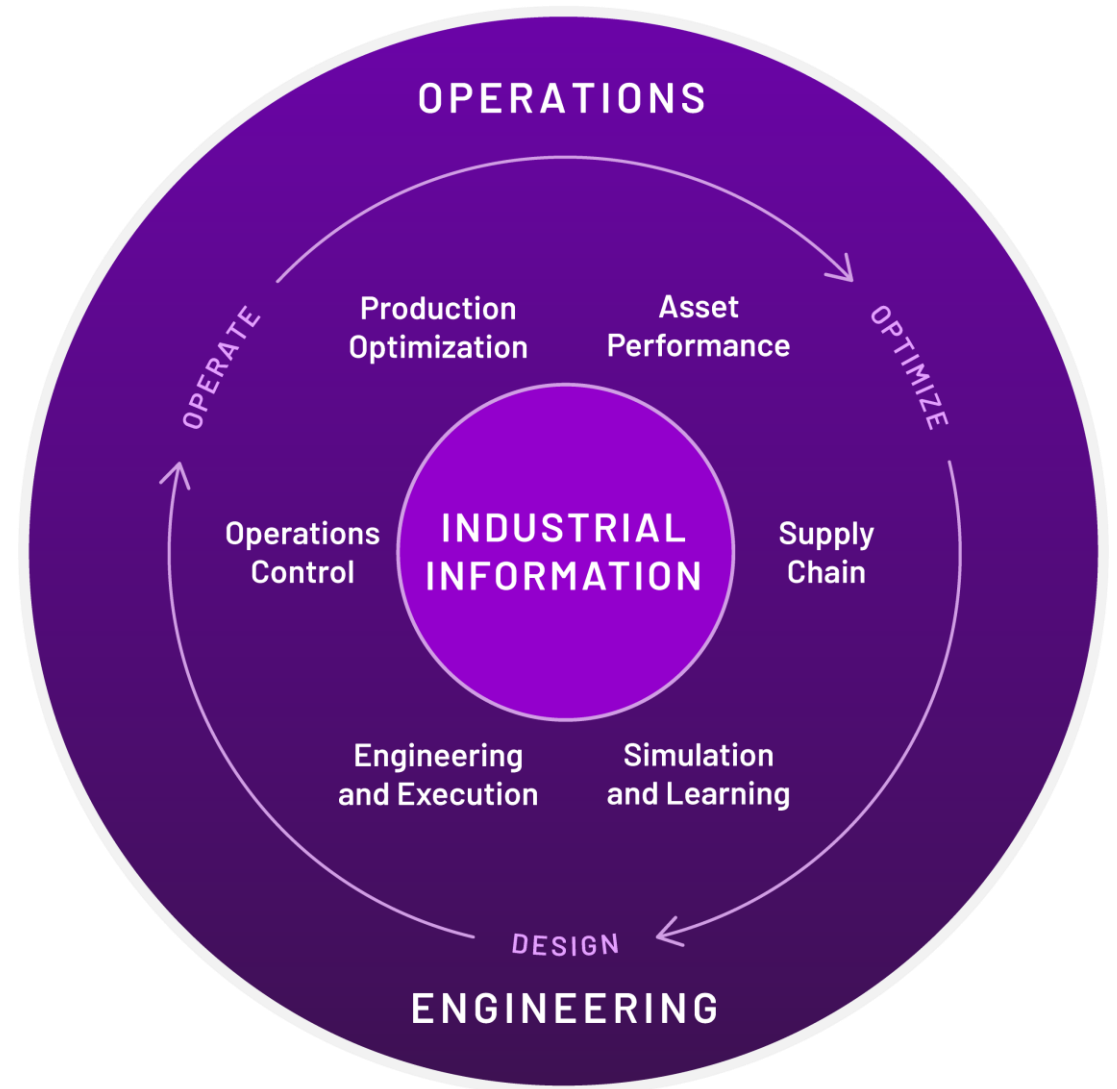


Industrial Information Highlight

Edge-to-cloud industrial information management



Roadmap: PI System integration with AVEVA Predictive Analytics and AVEVA Unified Operations Center. AVEVA Data Hub (OCS) available in AVEVA Connect cloud platform



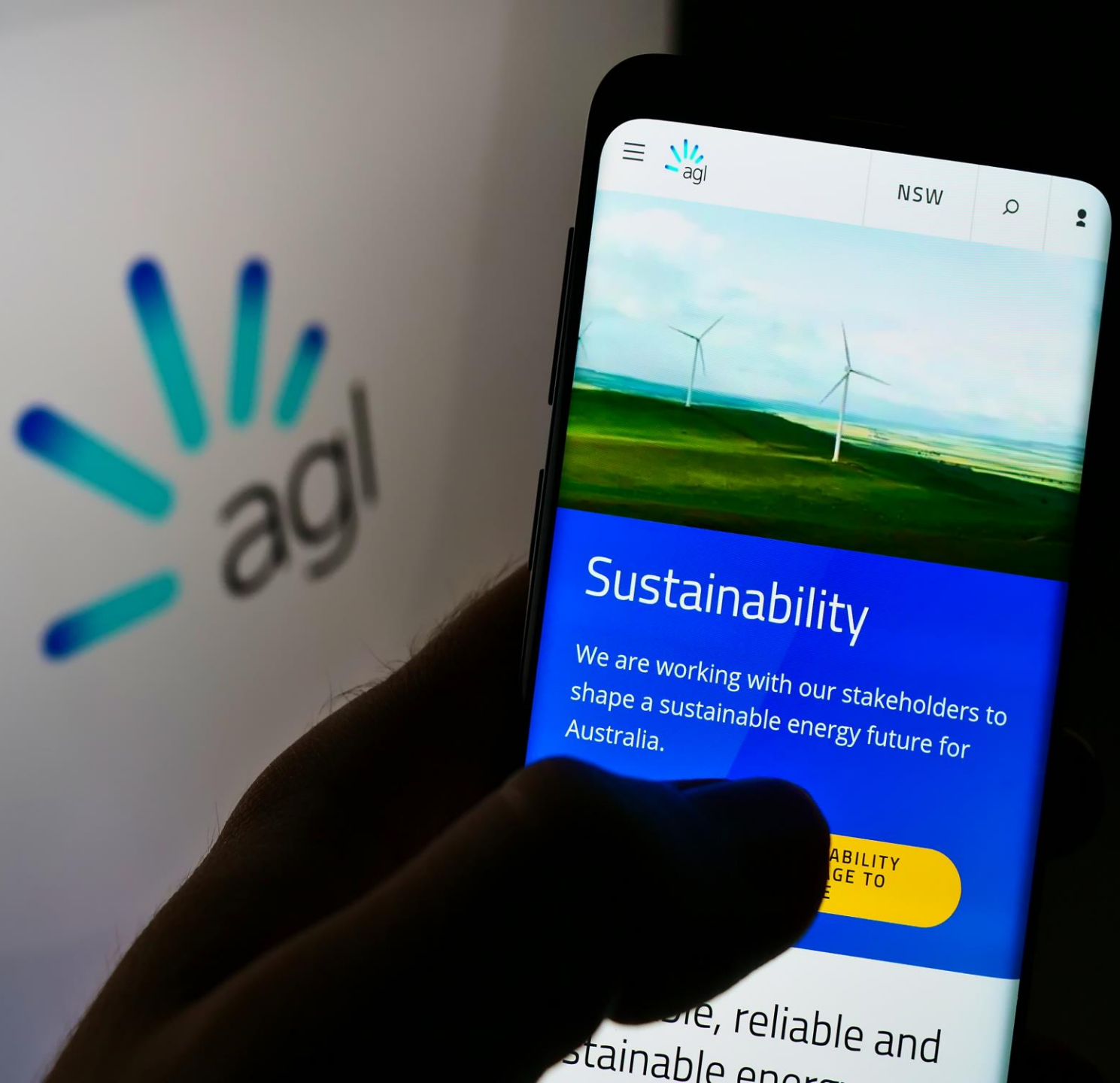
AGL

AGL in Australia uses AVEVA PI System in the cloud to share data securely on wind and coal power with customers

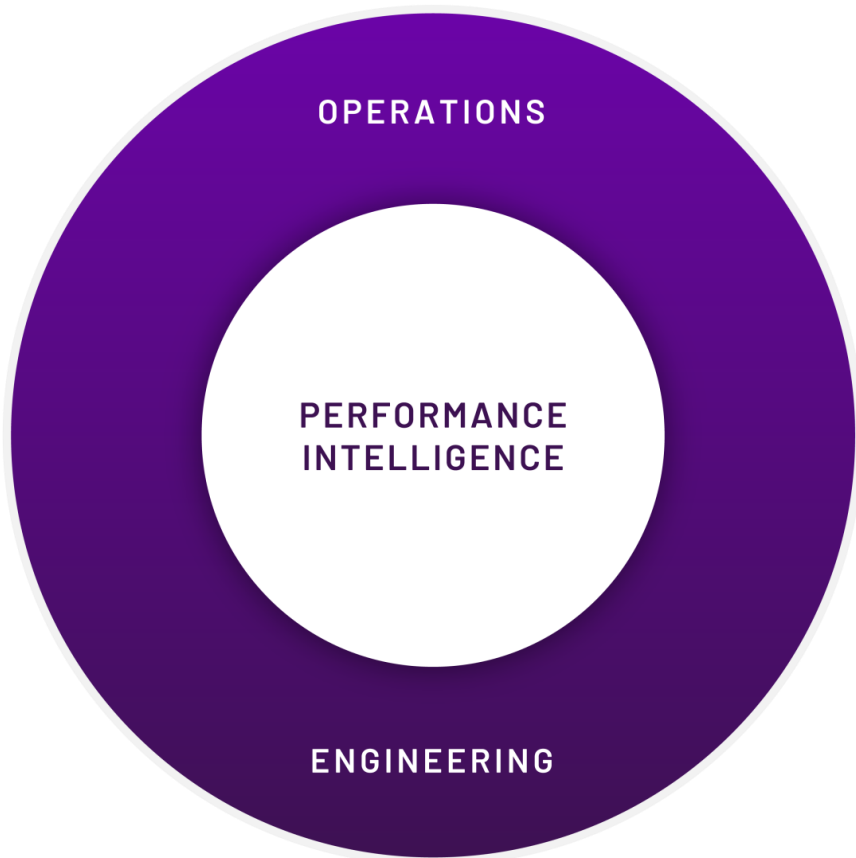
Cloud-based, real-time data access for asset owner customers

Multiple data access methods suitable for different end customer requirements

Enables variety of data access methods depending on end user requirements



Continuous innovation to drive proven outcomes



Operations

| | |
|---|---------|
| Operations Control edge to enterprise subscription offers | Now |
| PI System Integration with Predictive Analytics and Unified Operations Center | Now |
| Analytics guided and advanced in the cloud for faster time to value | Now |
| Advanced Planning Scheduling in partnership with Planet Together for batch, Scheduling AI capability for decision support in agile supply chain management | Now/End |
| Enterprise Visualization industry templates for Water, Renewables and Midstream | End |

Engineering

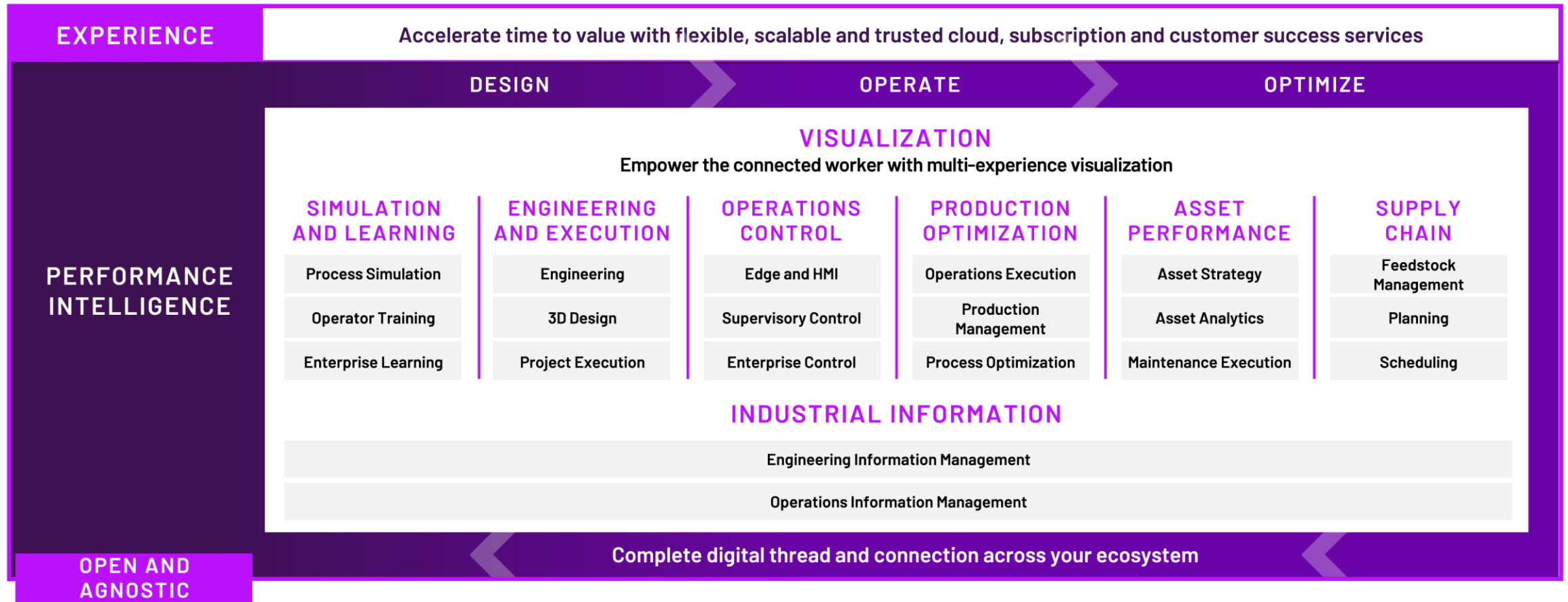
| | |
|--|---------|
| Learning unified environment to upskill remote connected teams | Now |
| Simulation deliver on sustainability targets with process modeling and predictive optimization solutions | Mid/End |
| Engineering and Design deliver process, mechanical, instrumentation, electrical engineering data (1D), drawings (2D) and design (3D) in one environment | Mid/End |

Information and Visualization

| | |
|---|-----|
| Industrial Information and Connected Community cloud enabled integration across engineering and operations and data sharing capability | End |
|---|-----|

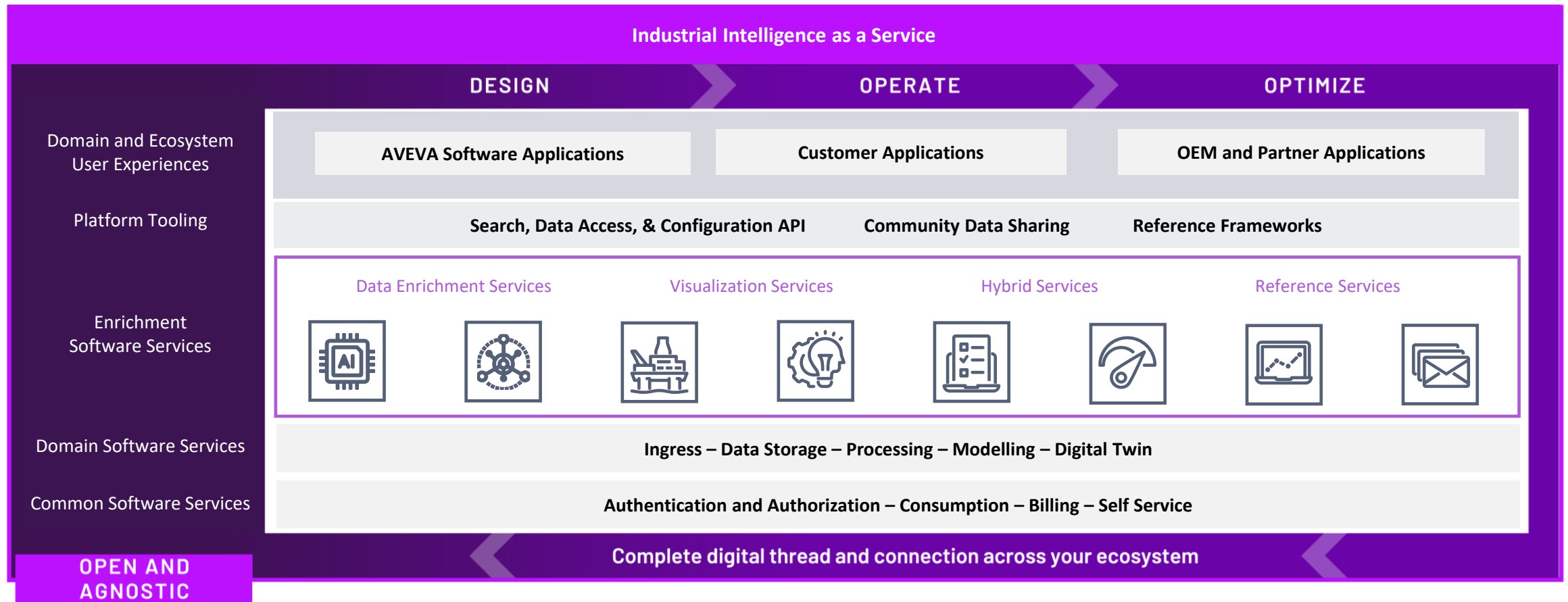
Combining world-class software to drive Performance Intelligence

Accelerating digital transformation of the industrial world with complementary product offerings

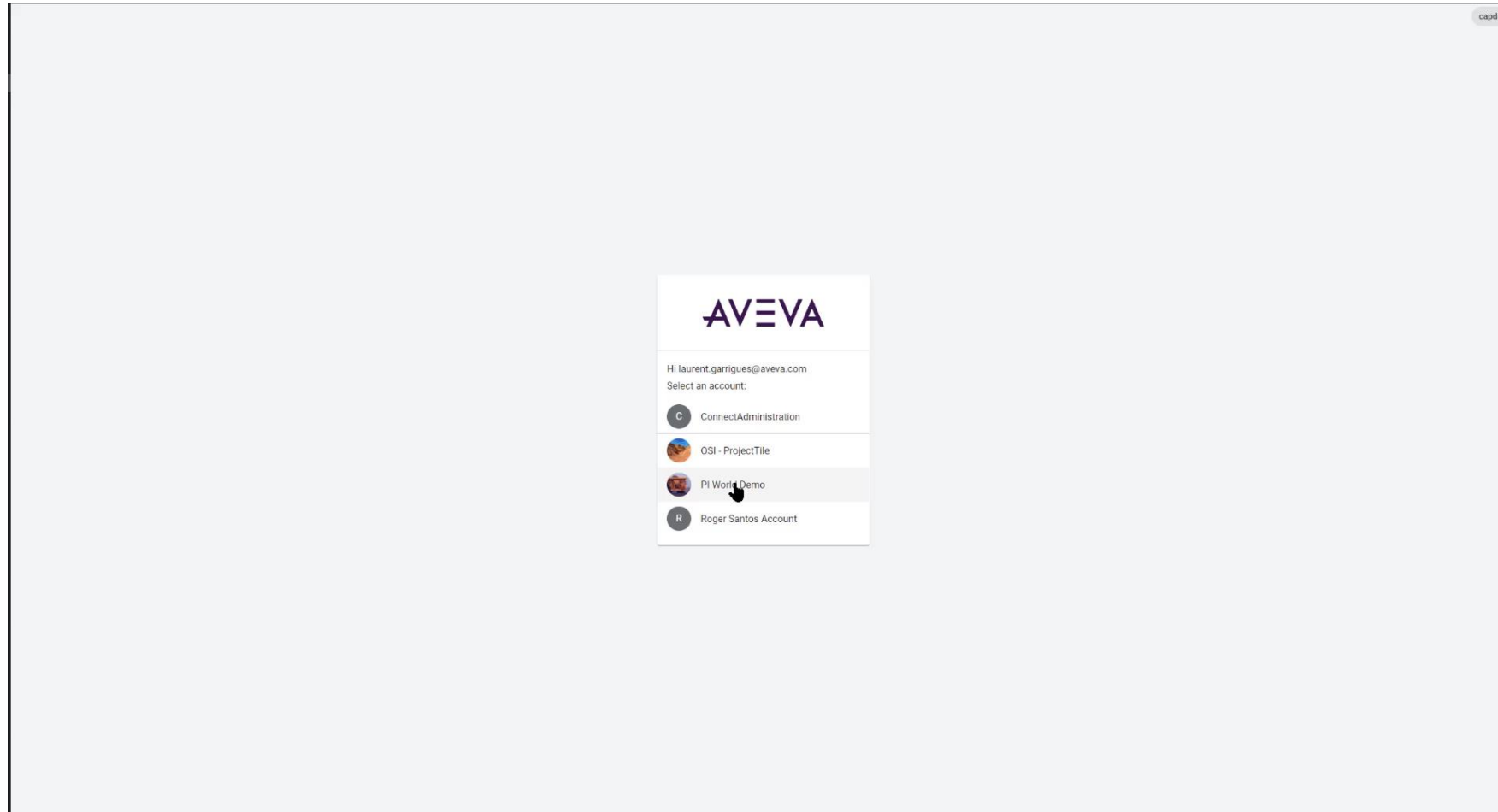


Connecting people with industrial intelligence

Vision for the future: global, holistic optimization across the entire industrial ecosystem



Connecting people with industrial intelligence



See how we are unlocking Performance Intelligence



Mike Walsh hosts
Panel with Schlumberger
and AVEVA




Lisa Johnston
CSO and CMO, AVEVA




Simon Coombs
MD, Industry X Digital
Manufacturing, Accenture

Attend the portfolio roadmap breakouts for more depth!

AVEVA

 [linkedin.com/company/aveva](https://www.linkedin.com/company/aveva)

 [@avevagroup](https://twitter.com/avevagroup)

ABOUT AVEVA

AVEVA is a global leader in industrial software, driving digital transformation and sustainability. By connecting the power of information and artificial intelligence with human insight, AVEVA enables teams to use their data to unlock new value. We call this Performance Intelligence. AVEVA's comprehensive portfolio enables more than 20,000 industrial enterprises to engineer smarter, operate better and drive sustainable efficiency. AVEVA supports customers through a trusted ecosystem that includes 5,500 partners and 5,700 certified developers around the world. The company is headquartered in Cambridge, UK, with over 6,500 employees and 90 offices in over 40 countries.

Learn more at www.aveva.com