

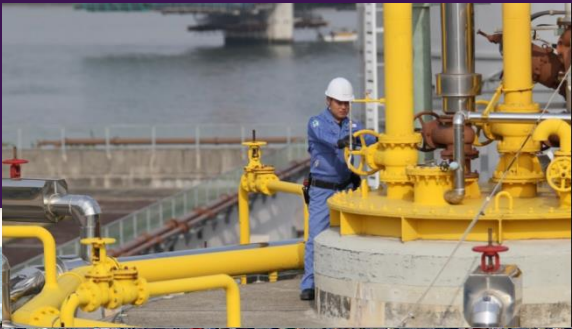
AVEVA PI WORLD

Industrial Smart Tools



Presented By: Hakim Bouhali

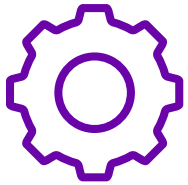
AVEVA



The best technology to preserve our water resources

Resourcing the World

- Veolia Water Technologies (VWT), a subsidiary of the [Veolia](#) group, is the leading specialist in water treatment.
- Our teams design and deliver drinking water or wastewater treatment plants as well as smaller standardized water treatment equipment for industrial or municipal customers.
- VWT also offers a range of services (audit, maintenance, digital,...) to cover all water treatment plant management needs.
- Our global presence and our 160 years of experience are unique in the world and allow us to base our technologies on years of practice and innovation to best serve our customers.
- We are constantly evolving to meet your needs, whether in after-sales services or product innovation.



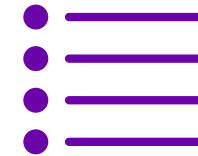
Challenges

- Design all together on all APAC area
- Manage the AVEVA licenses easily
- Get the engineer information's in real time for all APAC engineering
- Give all engineering documents for tender in 24H
- Give all engineering documents for Project in 24 D



Solution

- AVEVA™ Connect
- AVEVA™ Flex
- AVEVA™ Diagrams (P&ID)
- AVEVA™ E3D Design
- AVEVA™ Instrumentation
- AVEVA™ Electrical
- AVEVA™ Asset Information Management



Benefits

- Increase quality
- Speed up process's
- Increase Design Accuracy
- Increased production
- operational efficiency
- reduced costs

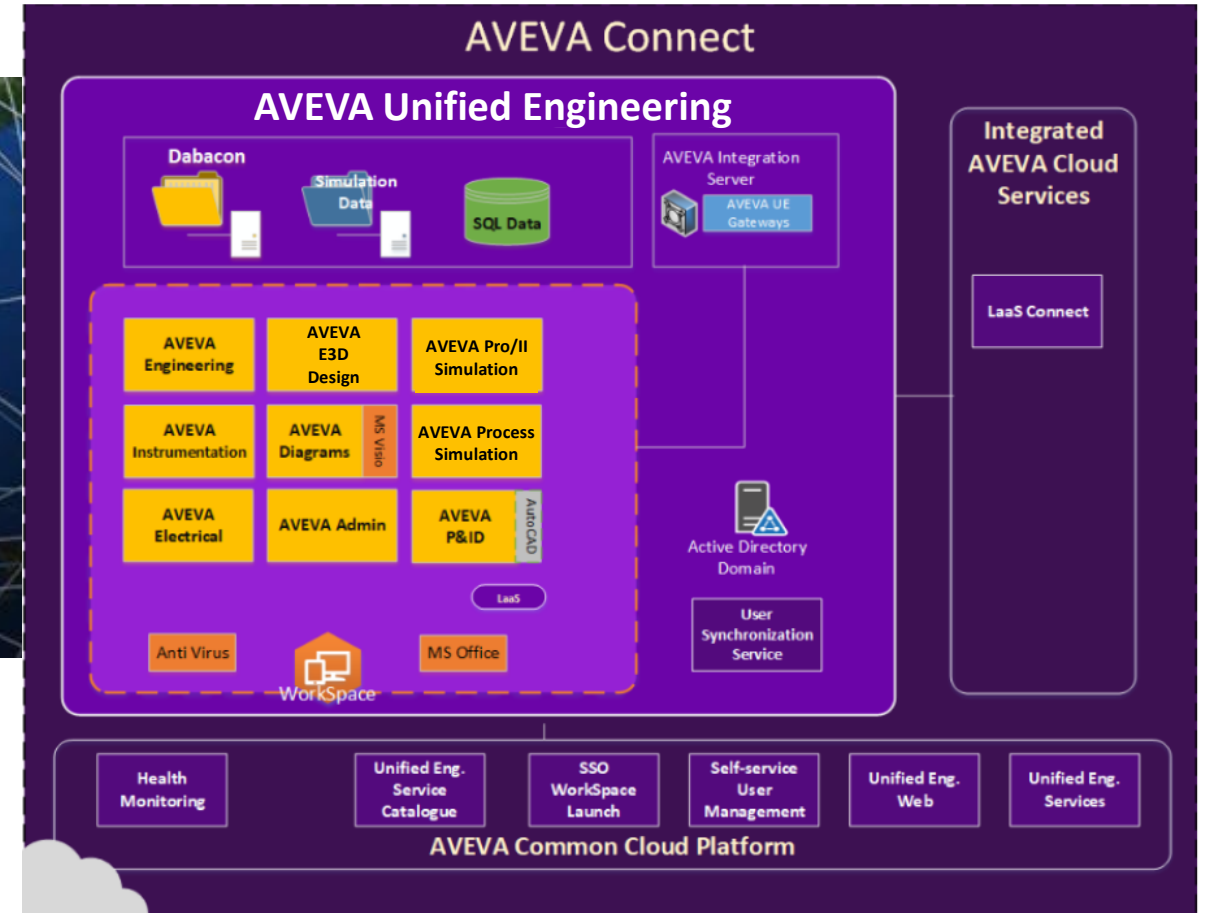
APAC Industrial SMART Tools

Tools Integration Principle Magic Cloud



- Flexible, subscription-based licensing
- Data in the cloud
- Software in the cloud

Our Teams have access to all Project and Tender in real time from everywhere

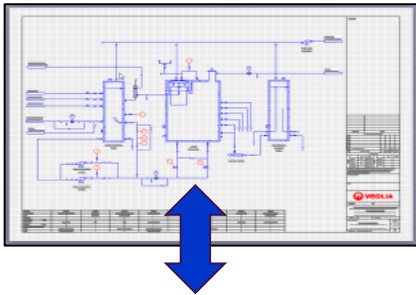


APAC Industrial SMART Tools

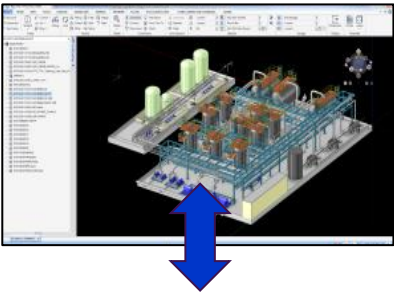


Overview - Smart Tools One Database

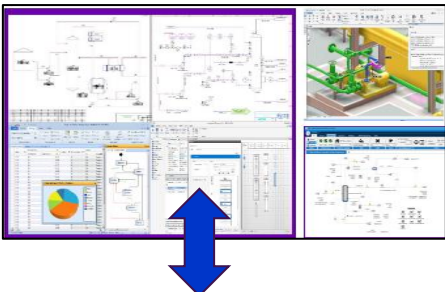
AVEVA Diagrams
P&ID



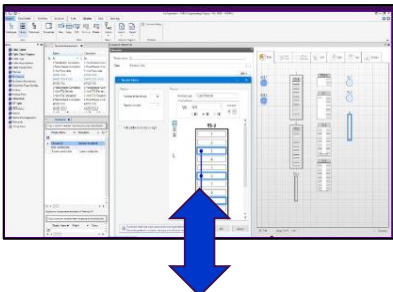
AVEVA E3D Design



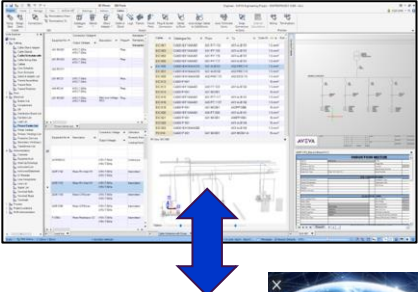
AVEVA Engineering



AVEVA Instrumentation



AVEVA Electrical



KL Singapore Jakarta
Sydney Beijing Shanghai

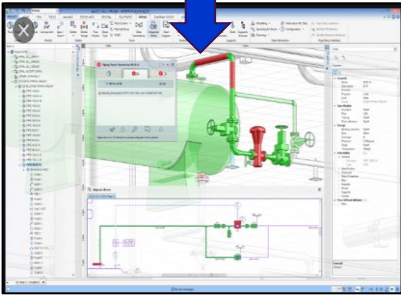


AVEVA

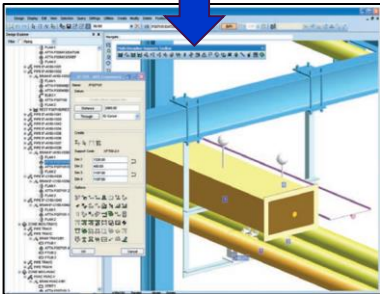


Dabacon

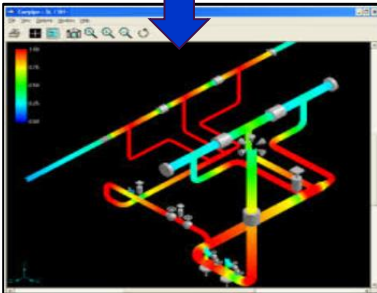
Access all information
in real time everywhere
in the World



Integrator



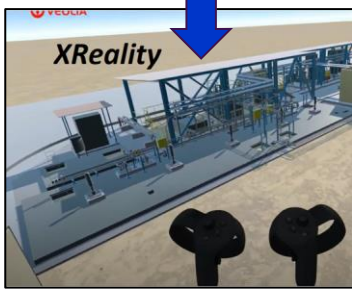
MDS



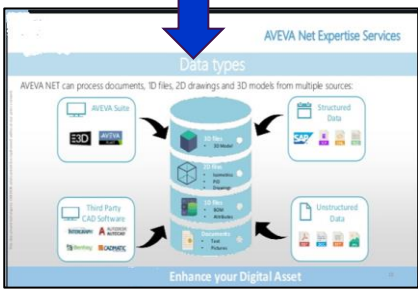
PSI



AVEVA 3D Asset
Visualization



XReality



AVEVA Asset Information
Management
AVEVA

APAC Industrial SMART Tools

AVEVA Asset Information Management & Virtual Reality

- AVEVA Asset Information Management (AIM) is a multi-source and multi-user data collection, search, visualization and comparison tool for technical documents from a WEB interface
 - Bring together 98% of engineering data at a single point of access
 - Reduce the time required to search for information by 50 to 70%

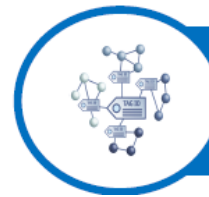


Digitally Transform Operator Tasks

- Render a Digital Twin—A complete high fidelity digital representation of a physical asset within an Augmented Reality (AR), Virtual Reality (VR) or a Mixed Reality (MR) environment
- A digital twin provides a safe, reliable environment to study, inspect, and test asset maintenance and optimization strategies prior to implementation.

Virtual Reality

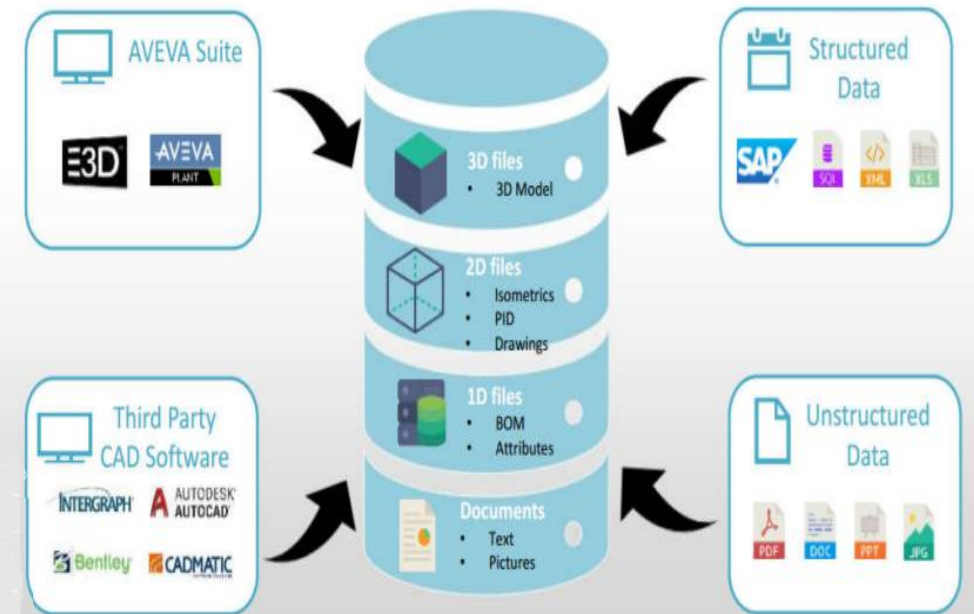
For Full Engineering Digitalization



BIM Portal –

AVEVA Asset Information Management

AVEVA AIM can process documents, 1D files, 2D drawings and 3D models from multiple sources:



AVEVA

SMART TENDER

24h for all Engineering documents for Tender

By Veolia

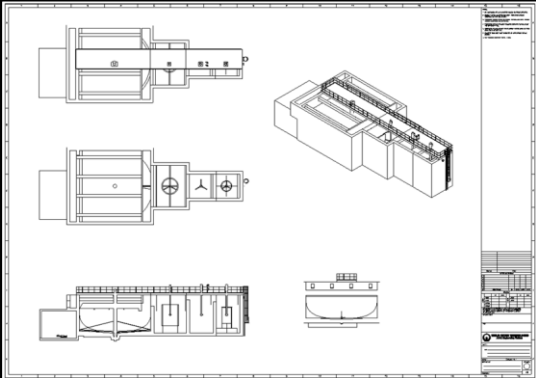


AVEVA

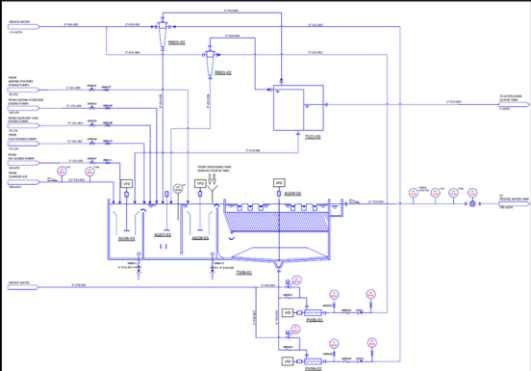
APAC Industrial SMART Tools

Overview - Smart Tools One Database

CIVIL GUIDE DRAWINGS



P&ID



EQUIPMENT LIST

P & ID	TAG	DESCRIPTION
/Q-SD-CAD-P3-006rA0.	TS08-01	ActifloCarb
/Q-SD-CAD-P3-006rA0.	AG06-01	Mixer for PAC Coagulation
/Q-SD-CAD-P3-006rA0.	AG07-01	Mixer for Coagulation Tank
/Q-SD-CAD-P3-006rA0.	AG08-01	Mixer for Flocculation Tank
/Q-SD-CAD-P3-006rA0.	AG09-01	Scraper for Sedimentation Tank
/Q-SD-CAD-P3-006rA0.	PV06-01	Actiflocarb Recirculation Pump A
/Q-SD-CAD-P3-006rA0.	PV06-02	Actiflocarb Recirculation Pump B
/Q-SD-CAD-P3-006rA0.	TS12-01	Splitbox
/Q-SD-CAD-P3-006rA0.	RN01-01	Hydrocyclone A
/Q-SD-CAD-P3-006rA0.	RN01-02	Hydrocyclone B
/Q-SD-CAD-P3-006rA0.	JL01-01	Launders for Actiflocarb
/Q-SD-CAD-P3-006rA0.	MP01-01	Lamellas for Actiflocarb

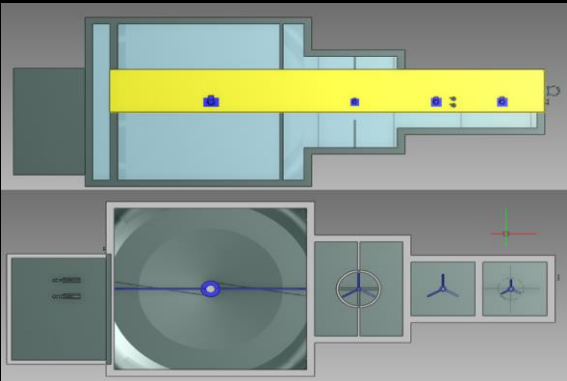
All Engineering Documents for Tender in 24H Season 1



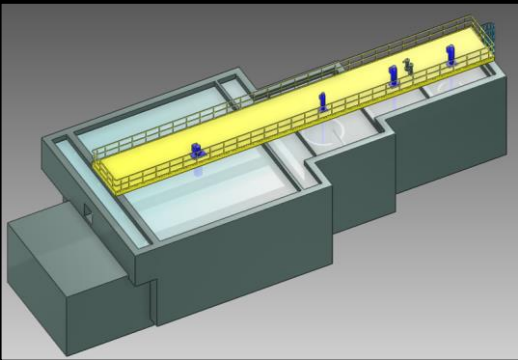
CIVIL BOQ

	A	B
1	Name	Civil Vol(mm3)
2	Contact Tank	52850000000
3	Coagulant Tank	52850000000
4	Flocculation Tank	72000000000
5	Sedimentation Tank	222100000000
6	Pump Room	70895370000

CONCEPT DESIGN

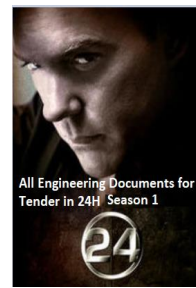


3D VIEW



APAC Industrial SMART Tools

Overview



INPUT

OUTPUT



Project: Korea By Veolia

3 Weeks Chrono for Full Design

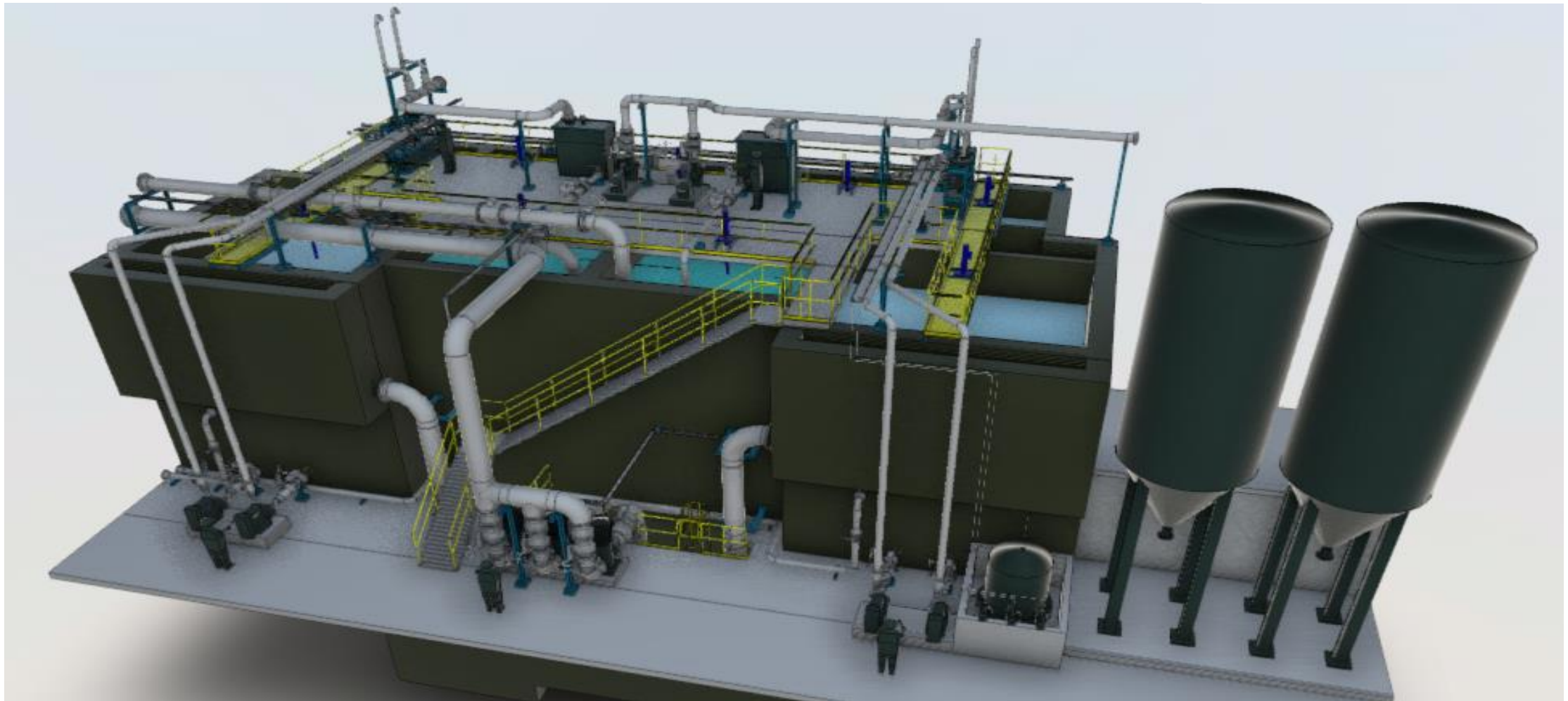
Full 3D model , all engineering documents



AVEVA

APAC Industrial SMART Tools

Smart Project

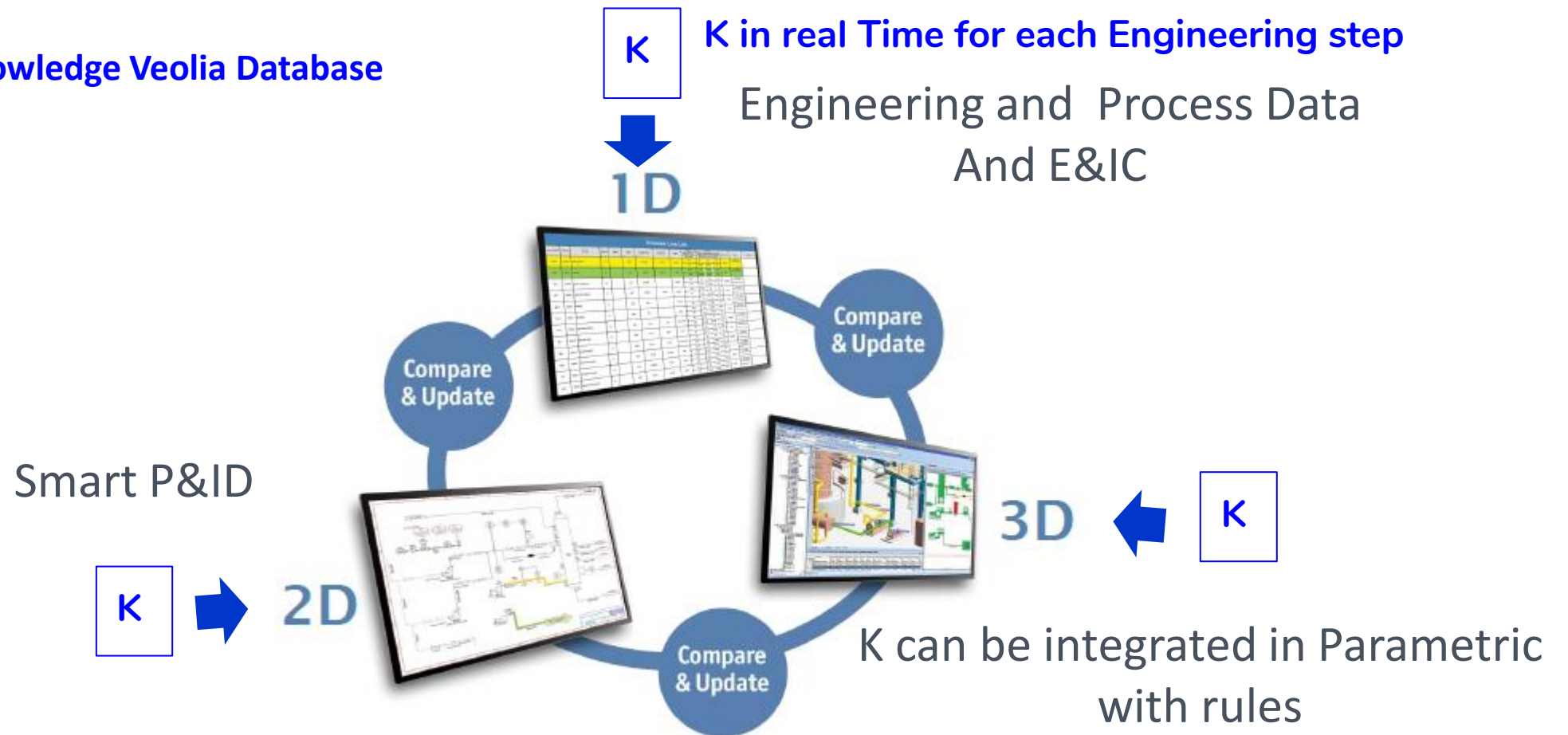


AVEVA

FUTURE DEVELOPMENTS

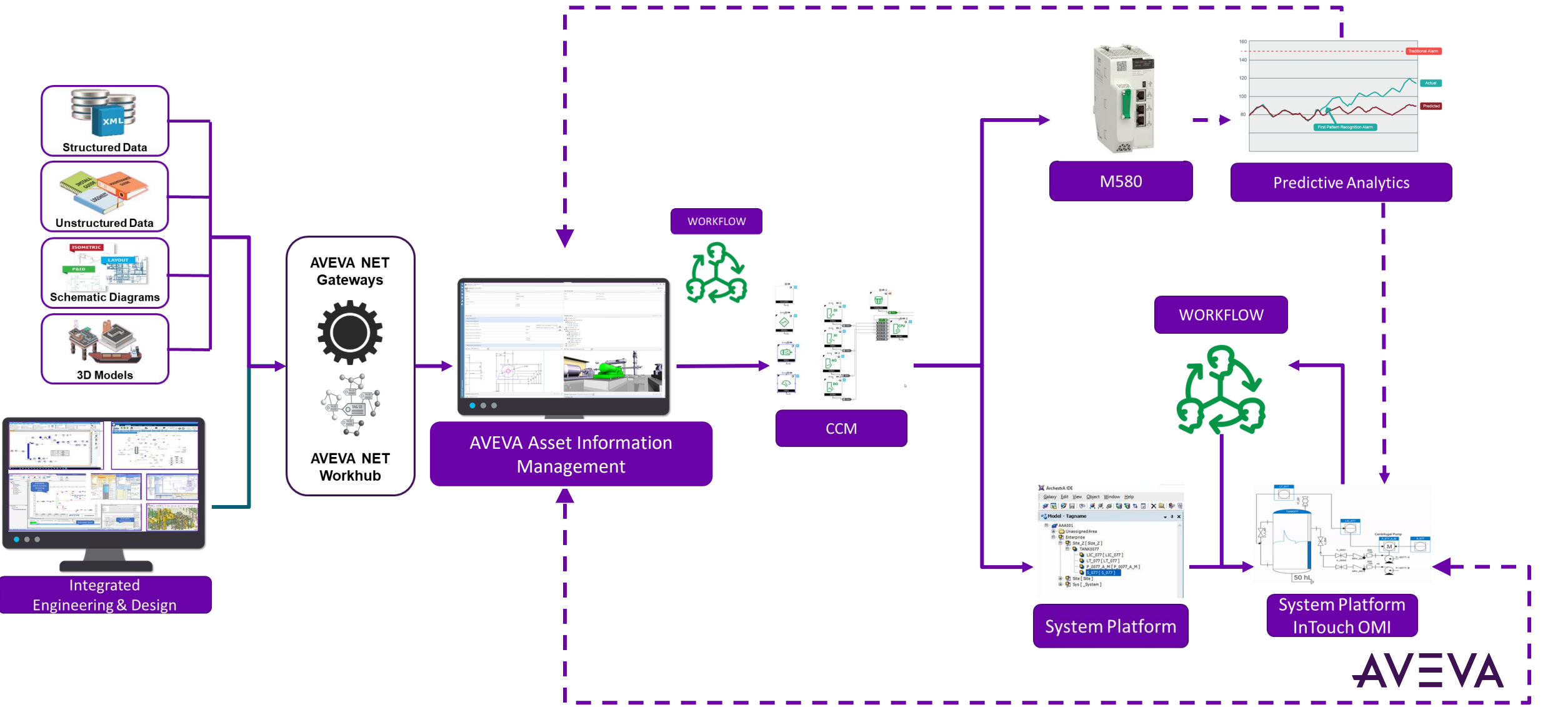


K: Rex and knowledge Veolia Database



APAC Industrial SMART Tools

Smart Link with API and HMI



APAC Industrial SMART Tools

Zen Standardization



BAMBOO STANDARDIZATION STRONG BUT FLEXIBLE

Hakim Bouhali

APAC Industrial Engineering Director




- Veolia Water Technologies
- Hakim.Bouhali@veolia.com




Resourcing the World

This presentation may include predictions, estimates, intentions, beliefs and other statements that are or may be construed as being forward-looking. While these forward-looking statements represent our current judgment on what the future holds, they are subject to risks and uncertainties that could result in actual outcomes differing materially from those projected in these statements. No statement contained herein constitutes a commitment by AVEVA to perform any particular action or to deliver any particular product or product features. Readers are cautioned not to place undue reliance on these forward-looking statements, which reflect our opinions only as of the date of this presentation.

The Company shall not be obliged to disclose any revision to these forward-looking statements to reflect events or circumstances occurring after the date on which they are made or to reflect the occurrence of future events.

 [linkedin.com/company/aveva](https://www.linkedin.com/company/aveva)

 [@avevagroup](https://twitter.com/avevagroup)

ABOUT AVEVA

AVEVA, a global leader in industrial software, drives digital transformation for industrial organizations managing complex operational processes. Through Performance Intelligence, AVEVA connects the power of information and artificial intelligence (AI) with human insight, to enable faster and more precise decision making, helping industries to boost operational delivery and sustainability. Our cloud-enabled data platform, combined with software that spans design, engineering and operations, asset performance, monitoring and control solutions delivers proven business value and outcomes to over 20,000 customers worldwide, supported by the largest industrial software ecosystem, including 5,500 partners and 5,700 certified developers. AVEVA is headquartered in Cambridge, UK, with over 6,000 employees at 90 locations in more than 40 countries. For more details visit: www.aveva.com