

AVEVA PI WORLD

The TS Queen Mary Story: Restoring a British Icon

Presented By: Iain Sim and Andy McGibbon

AVEVA



Iain Sim

Chairman – Friends of TS Queen Mary

- Friends of TS Queen Mary
- iain@tsqueenmary.org.uk



Andy McGibbon

Lead Naval Architect

- Brookes Bell / Friends of TS Queen Mary
- andy.mcgibbon@brookesbell.com

TS QUEEN MARY



Royal Patron – Her Royal Highness The Princess Royal

About TS Queen Mary

Origin: Built on the River Clyde, in 1933

Prominent passengers in the 20th century:

- In WW2, **Sir Anthony Eden** (at the behest of Winston Churchill) was on board to welcome Canadian troops
- In 1942 **King George VI, Queen Elizabeth and Eleanor Roosevelt** sailed on board, as part of their tours of Britain
- After WW2, **Field Marshal Montgomery, Lord Mountbatten, and the Princesses Elizabeth and Margaret** all were passengers

Fast Facts:

- The last of her kind in the world and is on the Core 40 fleet of the National Historic Ship register
- Exemplar of Britain's great shipbuilding and naval heritage and culture



TS Queen Mary – Project Highlights 2011-2018

2011

TS *Queen Mary* abandoned in the Port of Tilbury

2015

Ownership passes to Friends of TS *Queen Mary*

2016

FOTSQM raise £120,000 to make TS *Queen Mary* seaworthy for her return voyage to Greenock

FOTSQM raise £300,000 to dry dock TS *Queen Mary*

2017-2018

FOTSQM work with 300 cadets from City of Glasgow College to strip the vessel

2018

- Work starts on the naval architecture
- Cash and in-kind support in the project reaches £2M
- Her Royal Highness The Princess Royal becomes the Charity's Royal Patron and spearheads the campaign to restore the ship

TS Queen Mary – Project Highlights 2019-Today

2019

FOTSQM raises £500,000 to dry dock TS *Queen Mary* for a full survey

2020

FOTSQM raises a further £600,000 to undertake all design work

2021

Cash and in-kind support reaches £3.4M

All from private philanthropy and corporate support





TS QUEEN MARY



Royal Patron – Her Royal Highness The Princess Royal

Our Vision

1

Restoration
of an icon

- ✓ **Restore a cultural and heritage icon** that Scotland and the United Kingdom equally can be proud of

2

Job creation

- ✓ **Support jobs** in the British supply chain
- ✓ **Create 40 new jobs** when in operation

3

Marine cadet
training

- ✓ Create the **United Kingdom's first cadet ship**
 - MoU signed with City of Glasgow College for the *TS Queen Mary Skills and Training Academy*
 - ~100 students will come aboard each year to develop their skills for a career in the maritime industry

King George VI Lounge



Princess Royal Lounge



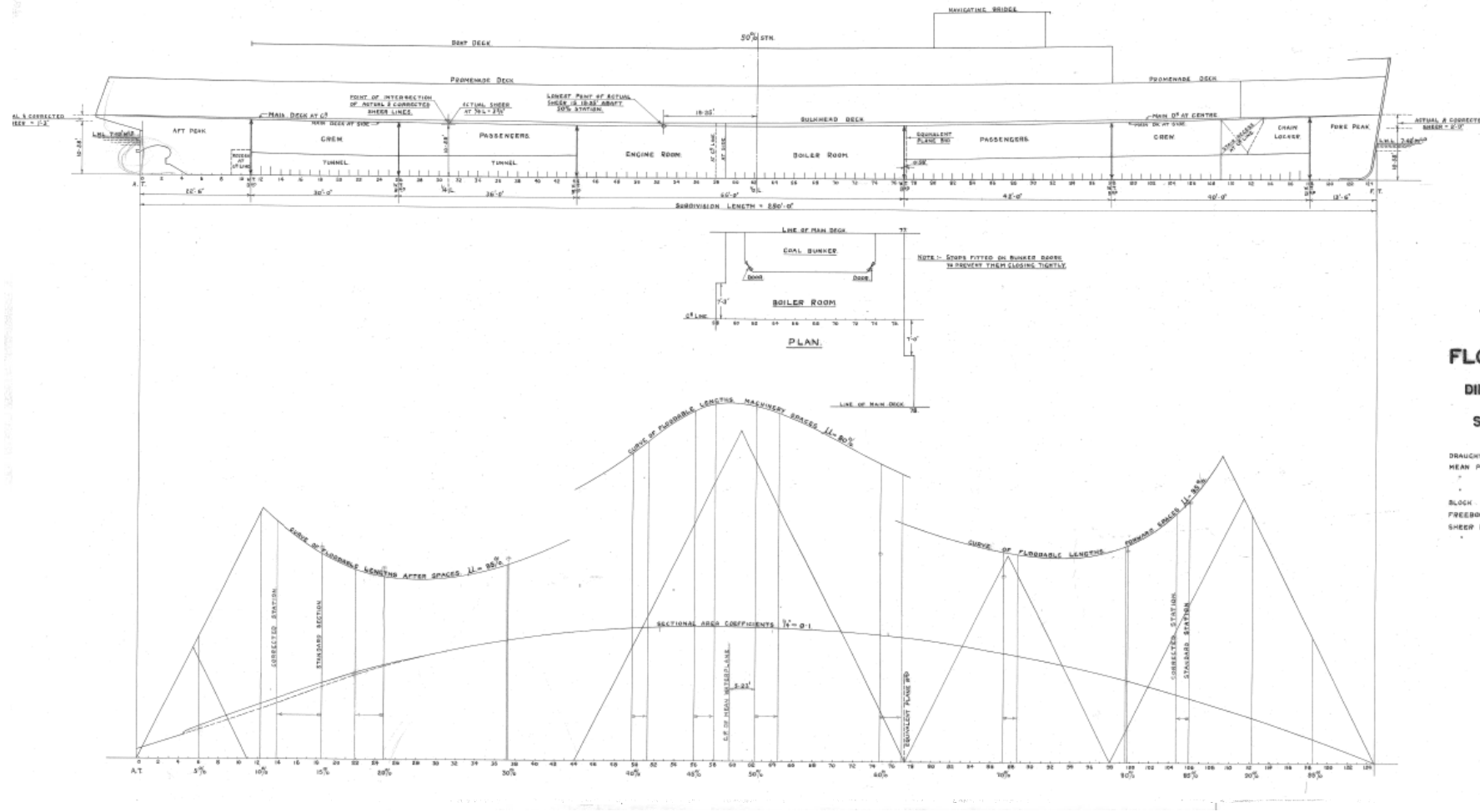
Queen's Restaurant



The First Glimpse...



Surviving Drawings



STEAM 3 CERTIFICATE

T^R. S. S. 1262.

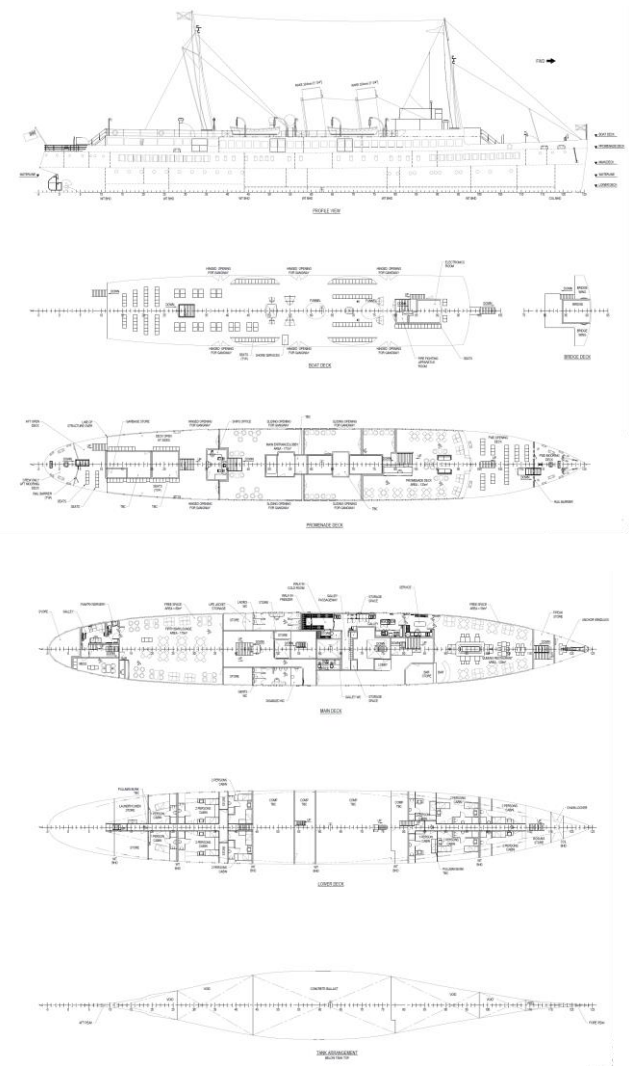
FLOODING CURVES.

DIMS. 250' x 35' x 10' 7".

SCALE 1/8" = ONE FOOT.

DRAUGHT = 7'-42" 1/2
 MEAN PERMEABILITY OF AFTER SPACES = 95%
 " " " MACHINERY SPACES = 80%
 " " " FORWARD SPACES = 85%
 BLOCK COEFFICIENT = .55
 FREEBOARD RATIO = .412
 SHEER RATIO FORWARD = .371
 " " AFT = .168

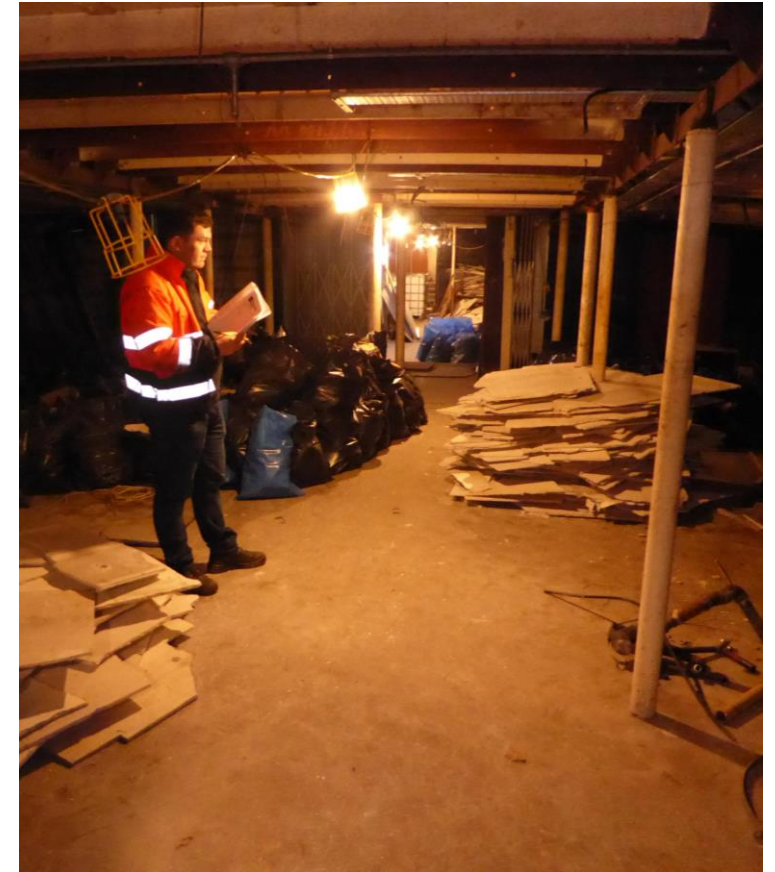
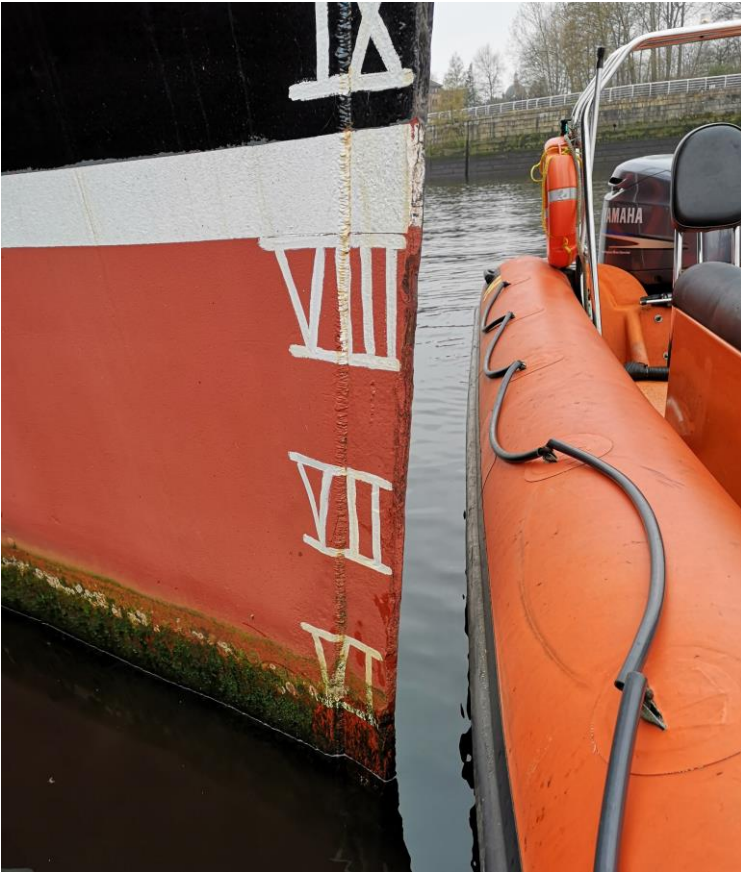
Basic Arrangement & Internal Survey



Ship's name TS Queen Mary Class Identity N° Report N° 19-1290-1B-R01 Rev. B1

Strake position		Keel																			
Plate position	No or Letter	Orig. Thk	Forward reading								Aft reading								Mean Diminution %		Maximum allowed diminution
			Gauged		Diminution P		Diminution S		Gauged		Diminution P		Diminution S								
			mm	P	S	mm	%	mm	%	P	S	mm	%	mm	%	P	S	mm			
5	SK-5F Fwd	N-Av	9.14	9.14						8.67	8.67										
5	SK-5F Aft	N-Av	9.01	9.01						9.65	9.65										
4	SK-4F Fwd	N-Av	9.18	9.18						9.13	9.13										
4	SK-4F Aft	N-Av	9.23	9.23						9.15	9.15										
3	SK-3F Fwd	N-Av	10.6	10.6						10.08	10.08										
3	SK-3F Aft	N-Av	9.23	9.23						10	10										
2	SK-2F Fwd	N-Av	7.42	7.42						7.72	7.72										
2	SK-2F Aft	N-Av	7.67	7.67						8.36	8.36										
1	SK-1F Fwd	N-Av	9.2	9.2						9.58	9.58										
1st fwd	SK-1F Aft	N-Av	9.25	9.25						9.8	9.8										
Amidships	SK-MS Fwd	N-Av	9.8	9.8						10.28	10.28										
	SK-MS Aft	N-Av	9.68	9.68						10.1	10.1										
1st aft	SK-1A Fwd	N-Av	10.73	10.73						10.39	10.39										
1	SK-1A Aft	N-Av	10.85	10.85						10.98	10.98										
2	SK-2A Fwd	N-Av	10.05	10.05						7.65	7.65										
2	SK-2A Aft	N-Av	9.72	9.72						9.65	9.65										
3	SK-3A Fwd	N-Av	8	8						7.55	7.55										
3	SK-3A Aft	N-Av	7.77	7.77						8.29	8.29										
4	SK-4A Fwd	N-Av	9.38	9.38						9.975	9.975										
4	SK-4A Aft	N-Av	9.75	9.75						10	10										
5	SK-5A Fwd	N-Av	10.1	10.1						10.4	10.4										
5	SK-5A Aft	N-Av	9.58	9.58						10.05	10.05										

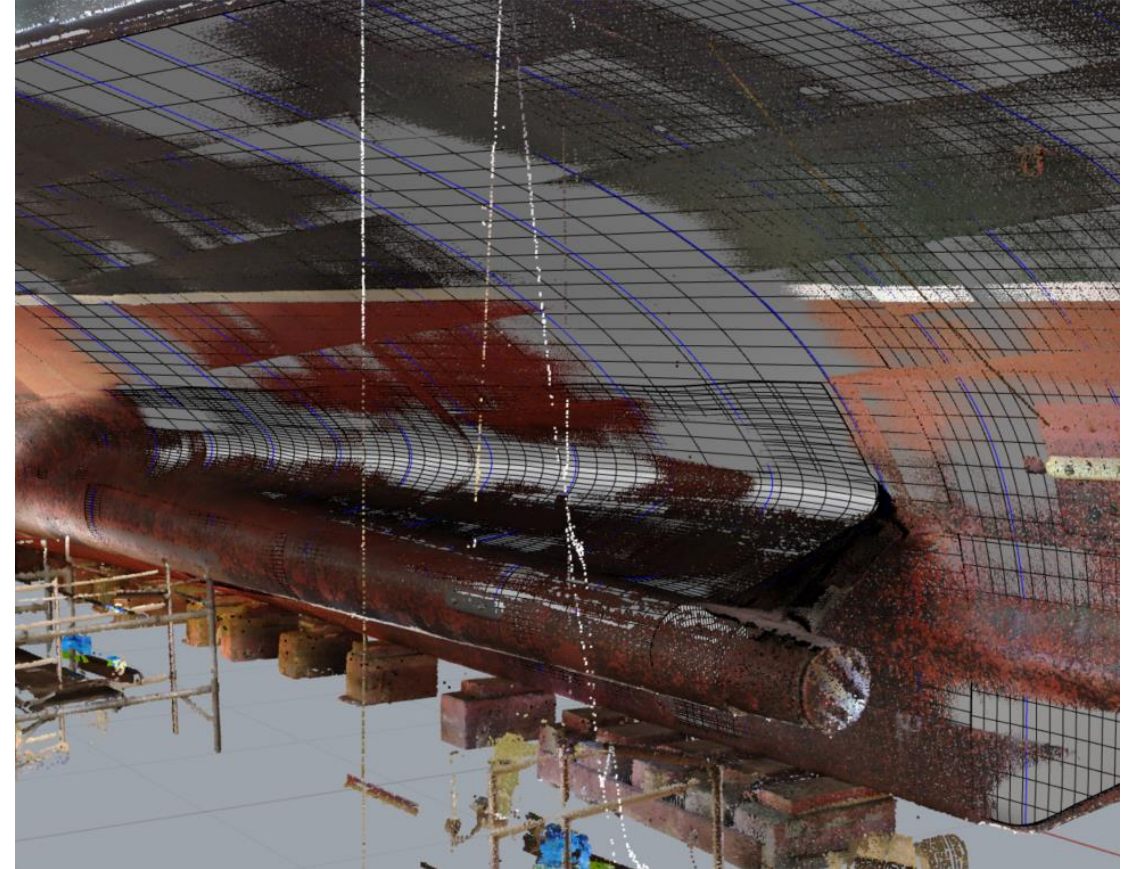
Incline Experiment & Weight Survey



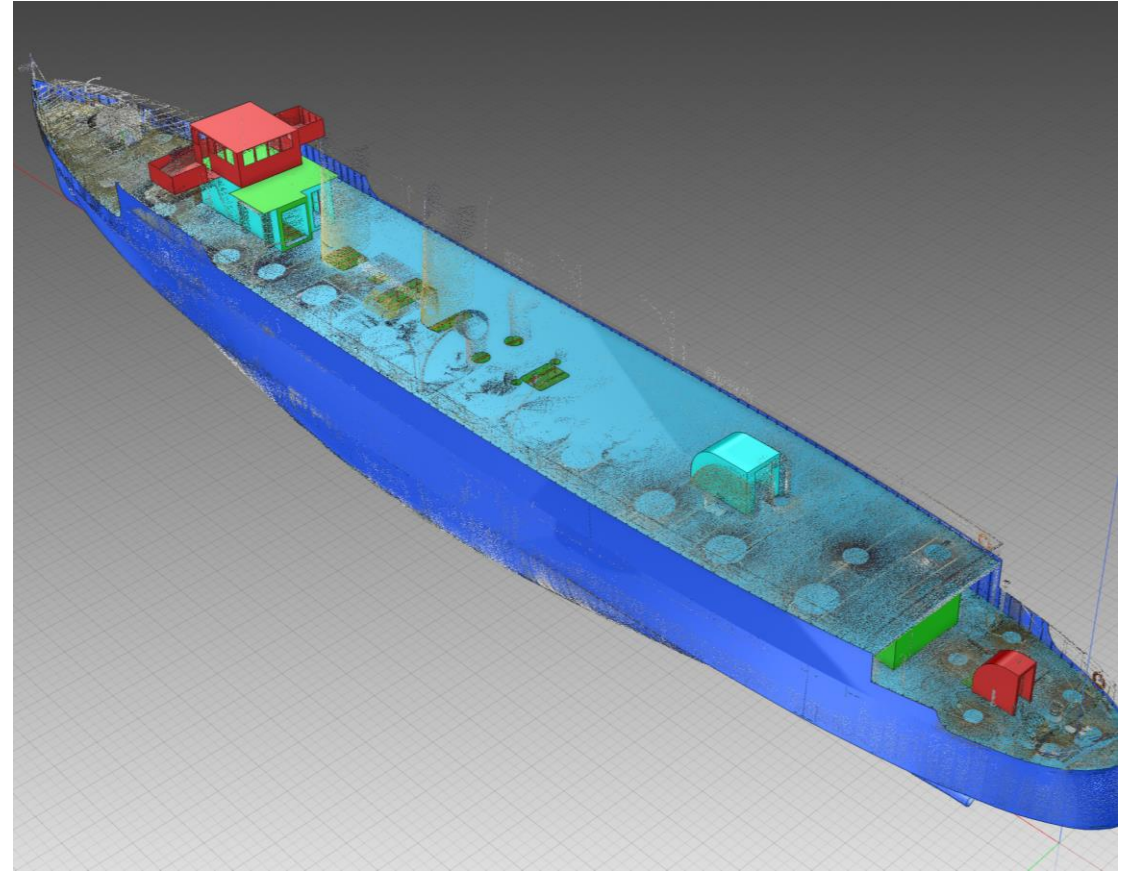
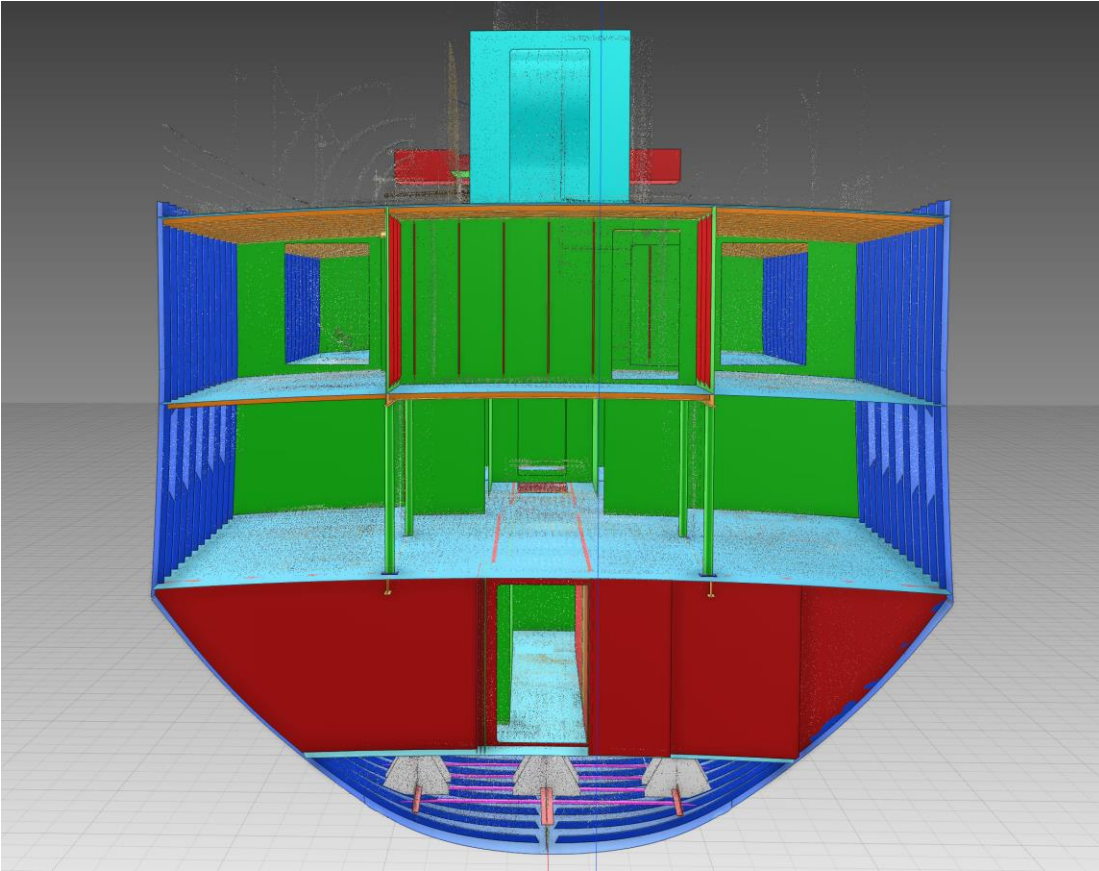
Trip Down the River & Ext Survey



Building the Hull Model

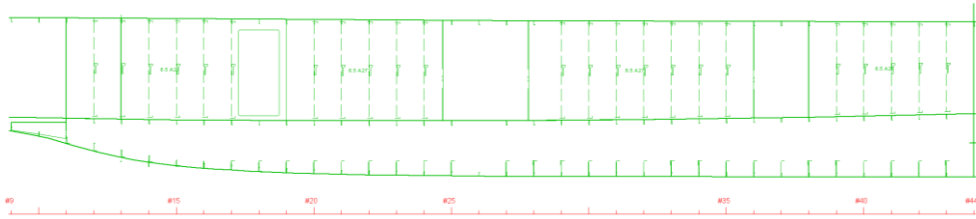


AVEVA Point Cloud Manager

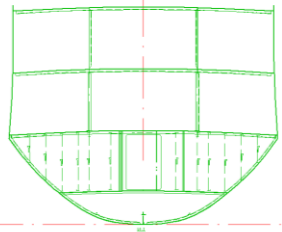


Output

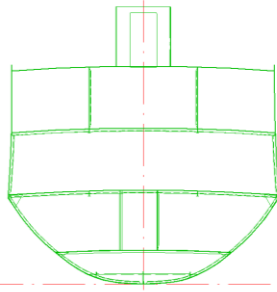
500 OFF C.L. ELEV.



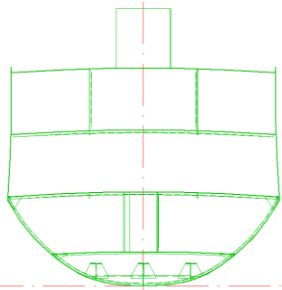
FR. 26 SEC.



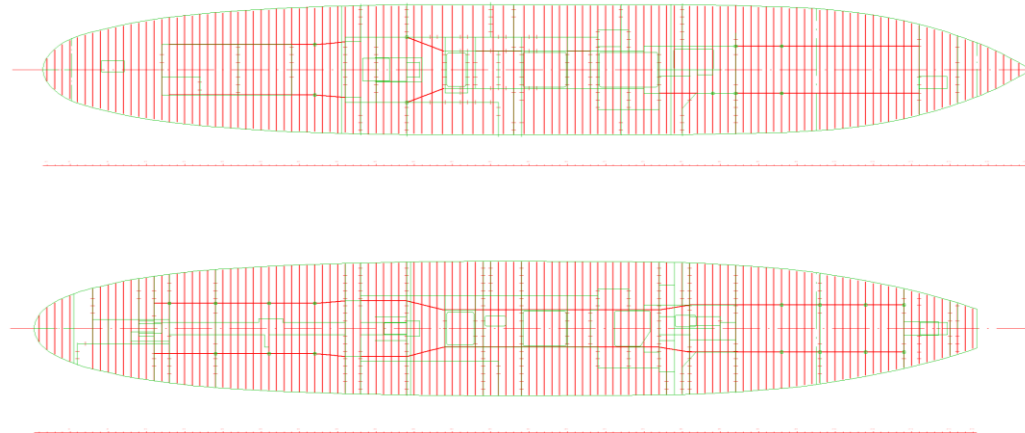
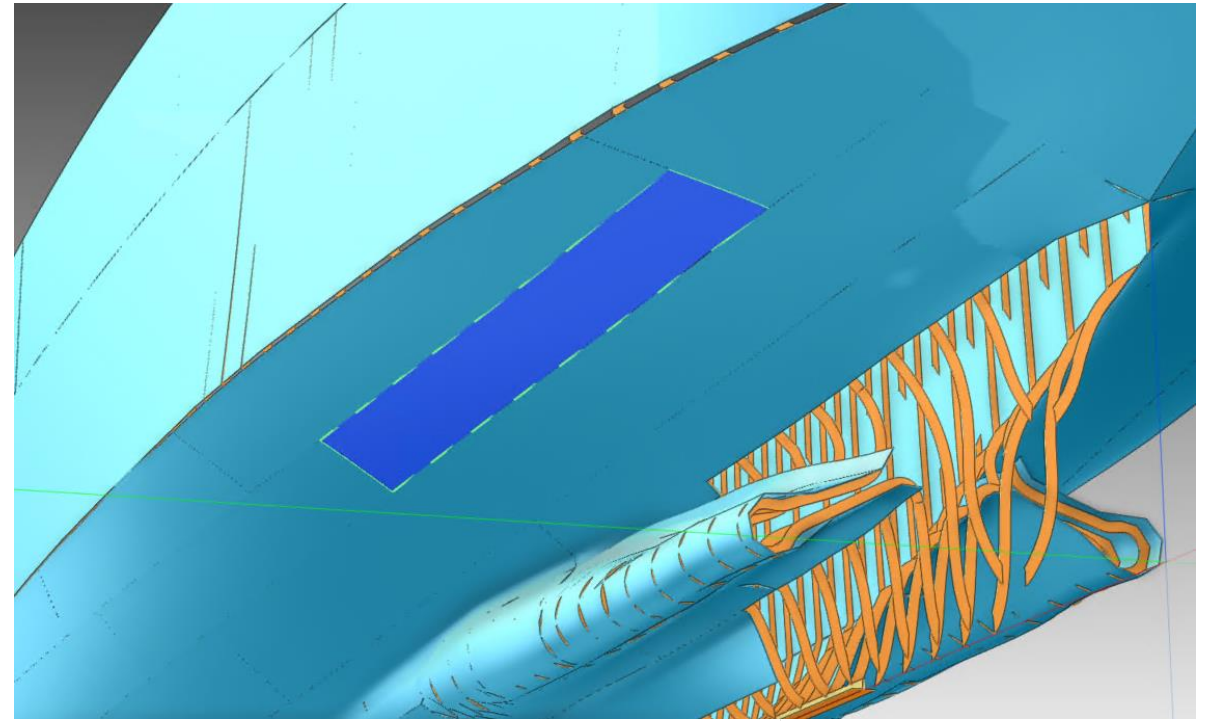
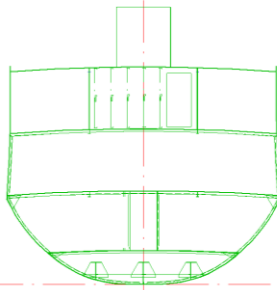
FR. 27 SEC.



FR. 28 SEC.



FR. 29 SEC.



TS QUEEN MARY



Royal Patron – Her Royal Highness The Princess Royal


THANK YOU


Other languages and words visible in the word cloud include:

- Japanese: 謝謝 (Shiwa)
- Polish: DZIĘKUJĘ CI
- Swazi: NGIYABONGA
- Turkish: TEŞEKKÜR EDERİM
- German: DANKIE
- Indonesian: TERIMA KASIH
- Spanish: GRACIAS
- Russian: СПАСИБО
- Italian: GRAZIE
- Maltese: MATUR NUWUN
- Ukrainian: ХВАЛА ВАМ
- Romanian: MULȚUMESC
- Georgian: PAKMET CI3GE
- Korean: 고맙습니다
- Arabic: شكرا
- Swahili: FAAFETAI
- Basque: ESKERRIK ASKO
- Slovak: HVALA
- Turkish: TEŞEKKÜR EDERİM
- Spanish: OBRIGADO
- French: MERCI
- Malagasy: DI OU MÈSI
- Czech: ĎAKUJEM
- Swahili: SIPAS
- Indonesian: TERIMA KASIH
- Swahili: UA TSAUG RAU KOJ
- Russian: ТИ БЛАГОДАРАМ
- Ukrainian: СИПОС
- Swahili: WAZVIITA
- Swahili: FALEMINDERIT
- Swahili: MAHALO IĀ 'OE
- Swahili: TAKK SKAL DU HA
- Swahili: GRAZZI
- Swahili: PAKKA PÉR
- Swahili: PAXMAT CAĠA
- Swahili: CẢM ƠN BẠN
- Swahili: KÖSZÖNÖM
- Swahili: GO RAIBH MAITH AGAT
- Swahili: БЛАГОДАРЯ
- Swahili: ТИ БЛАГОДАРАМ
- Swahili: TAK DANKE
- Swahili: RAHMAT
- Swahili: HATUR NUHUN

This presentation may include predictions, estimates, intentions, beliefs and other statements that are or may be construed as being forward-looking. While these forward-looking statements represent our current judgment on what the future holds, they are subject to risks and uncertainties that could result in actual outcomes differing materially from those projected in these statements. No statement contained herein constitutes a commitment by AVEVA to perform any particular action or to deliver any particular product or product features. Readers are cautioned not to place undue reliance on these forward-looking statements, which reflect our opinions only as of the date of this presentation.

The Company shall not be obliged to disclose any revision to these forward-looking statements to reflect events or circumstances occurring after the date on which they are made or to reflect the occurrence of future events.

 [linkedin.com/company/aveva](https://www.linkedin.com/company/aveva)

 [@avevagroup](https://twitter.com/avevagroup)

ABOUT AVEVA

AVEVA, a global leader in industrial software, drives digital transformation for industrial organizations managing complex operational processes. Through Performance Intelligence, AVEVA connects the power of information and artificial intelligence (AI) with human insight, to enable faster and more precise decision making, helping industries to boost operational delivery and sustainability. Our cloud-enabled data platform, combined with software that spans design, engineering and operations, asset performance, monitoring and control solutions delivers proven business value and outcomes to over 20,000 customers worldwide, supported by the largest industrial software ecosystem, including 5,500 partners and 5,700 certified developers. AVEVA is headquartered in Cambridge, UK, with over 6,000 employees at 90 locations in more than 40 countries. For more details visit: www.aveva.com