



AVEVA PI System Roadmap

Your roadmap to operational excellence!

AVEVA

Better data. Better business outcomes.



Asset health

DCP Midstream saved

\$20-25 million

in first year



Energy efficiency

Air Liquide achieved

10x ROI

in operational savings in first 8 months



Process optimization

ArcelorMittal shipped

26M additional tons

for \$120M in added revenue



Quality tracking

Deschutes postponed

\$8 million

capital upgrade



Compliance & sustainability

TasWater sped up response time by

13 hours

and saved the local oysters



Safety & resilience

Qatar Power operated over

3,452 days

without lost-time accidents

Better data. Better business outcomes.



Asset health

DCP Midstream saved

\$20-25 million

in first year



Energy efficiency

Air Liquide achieved

10x ROI

in operational savings in first 8 months



Process optimization

ArcelorMittal shipped

26M additional tons

for \$120M in added revenue



Quality tracking

Deschutes postponed

\$8 million

capital upgrade



Compliance & sustainability

TasWater sped up response time by

13 hours

and saved the local oysters



Safety & resilience

Qatar Power operated over

3,452 days

without lost-time accidents

Inspiring innovations that seek more data leading to bigger outcomes.

AVEVA

An aerial photograph of a steep, green mountain slope. A paved road winds through the landscape in a series of tight, S-shaped turns. Several vehicles, including cars and a truck, are visible on the road. The background shows more rugged mountain terrain under a clear sky.

AVEVA Operations Info Management roadmap: Guiding Principles

Seamless data infrastructure from edge to cloud

eliminate data silos, accelerate insight and support connected communities

Increased scope and value

meet and manage expanding data volume

Manageable software

lower the cost of ownership & increase performance, security and reliability

Seamless data infrastructure, edge to cloud.

Challenges at the edge



**Data from remote
sources**



**Local history
for applications**



**Linux or Windows
platform**



**1000's
of devices**

On the edge

- **OMF: Open Message Format**
- **PI Adapters**
- **Edge Data Store**



Small device,
multi-platform



Ready off-the-shelf



Flexible end points



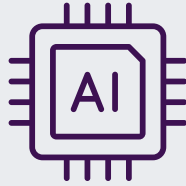
Edge Management

Seamless data infrastructure, edge to cloud.

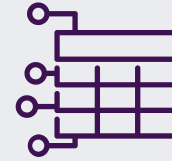
Challenges from innovative uses of data



**Business
Intelligence**



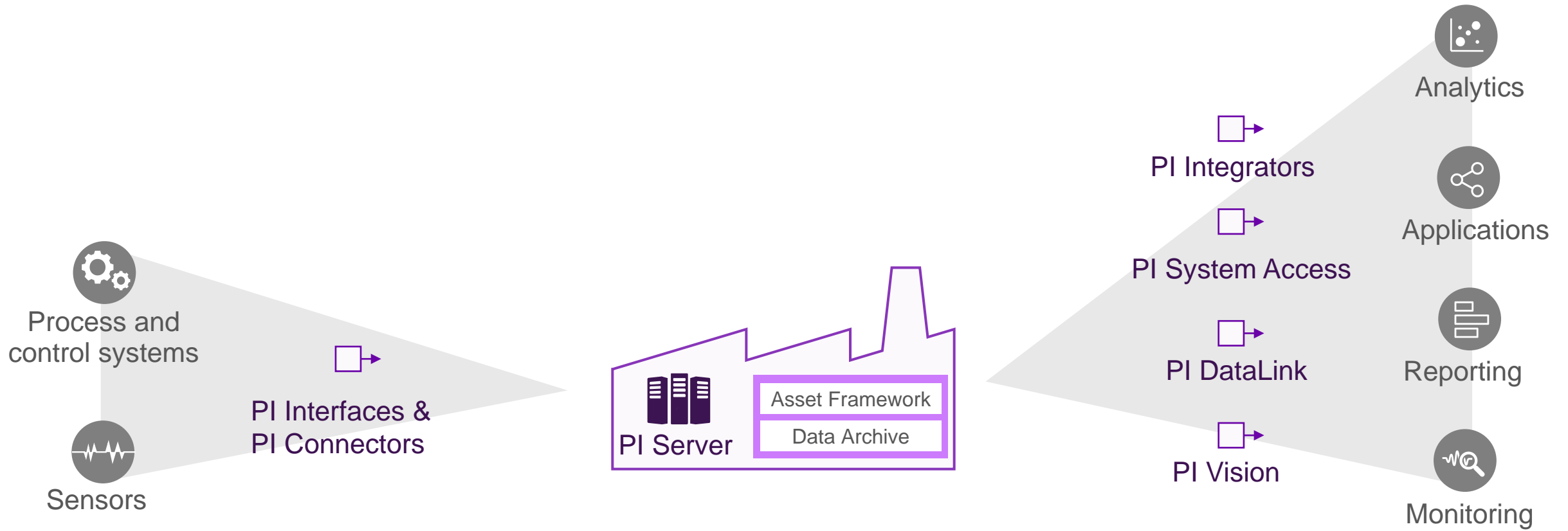
**Advanced
analytics**



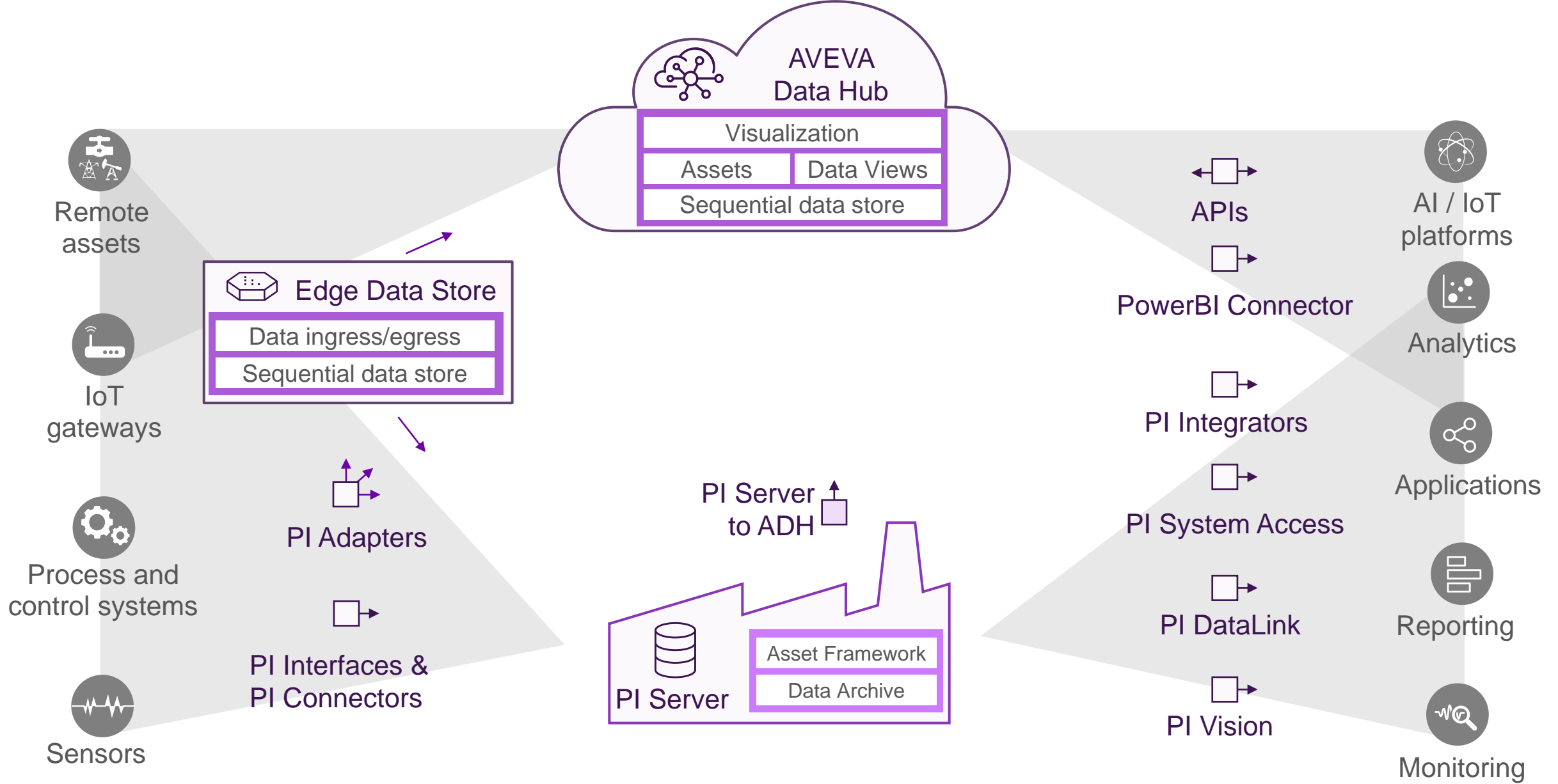
**Shared
data sets**



**Asset service
providers**



PI System focused on the asset and plant.



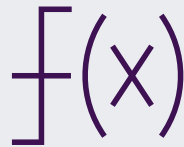
The PI System seamless infrastructure
Leverage Asset Framework, AVEVA Data Hub, Assets and Communities.

Increased scope and value of data

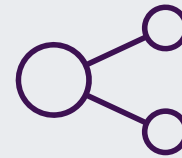
Challenges with analyzing and sharing more data



**Self service
analytics**



**Context
and calculations**



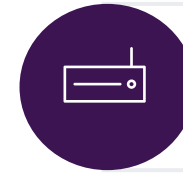
**Data shared
with context**



**Enterprise
dashboards**

Increased scope and value

- **PI Vision**
- **AF Analytics**
- **PI to AVEVA Data Hub**



Ad-hoc calculations



Self service exploration



Analytics scale



PI Server to AVEVA Data Hub

Shared situational awareness

AVEVA Unified Operations Center



PI Vision kiosk



Unified with context

Manageable software, security and reliability

Challenges on premises



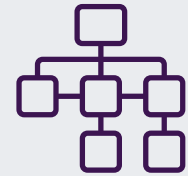
Cyber security



**Evolving
IT landscape**



**Validate
new releases**



**100's
of PI Servers**

Manageable Software

- **Secure Development Process**
- **Identity as a Service**



Secure by design



Scanning for issues

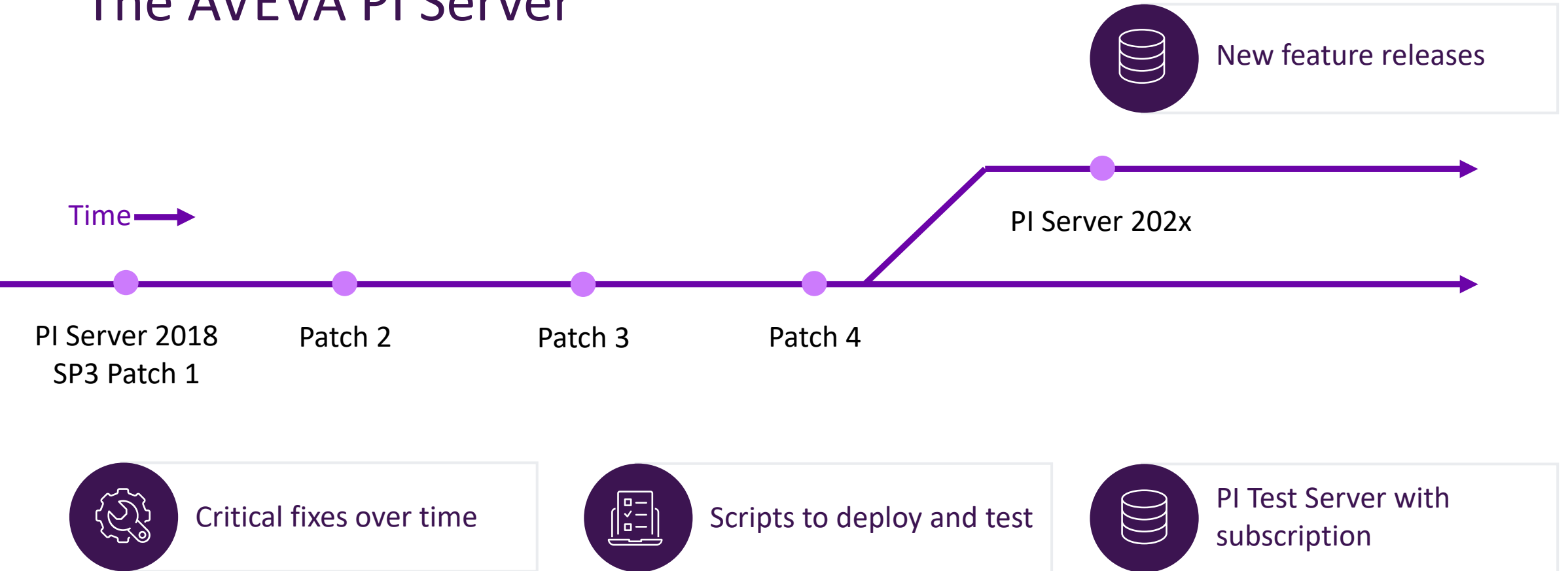


Retire or update



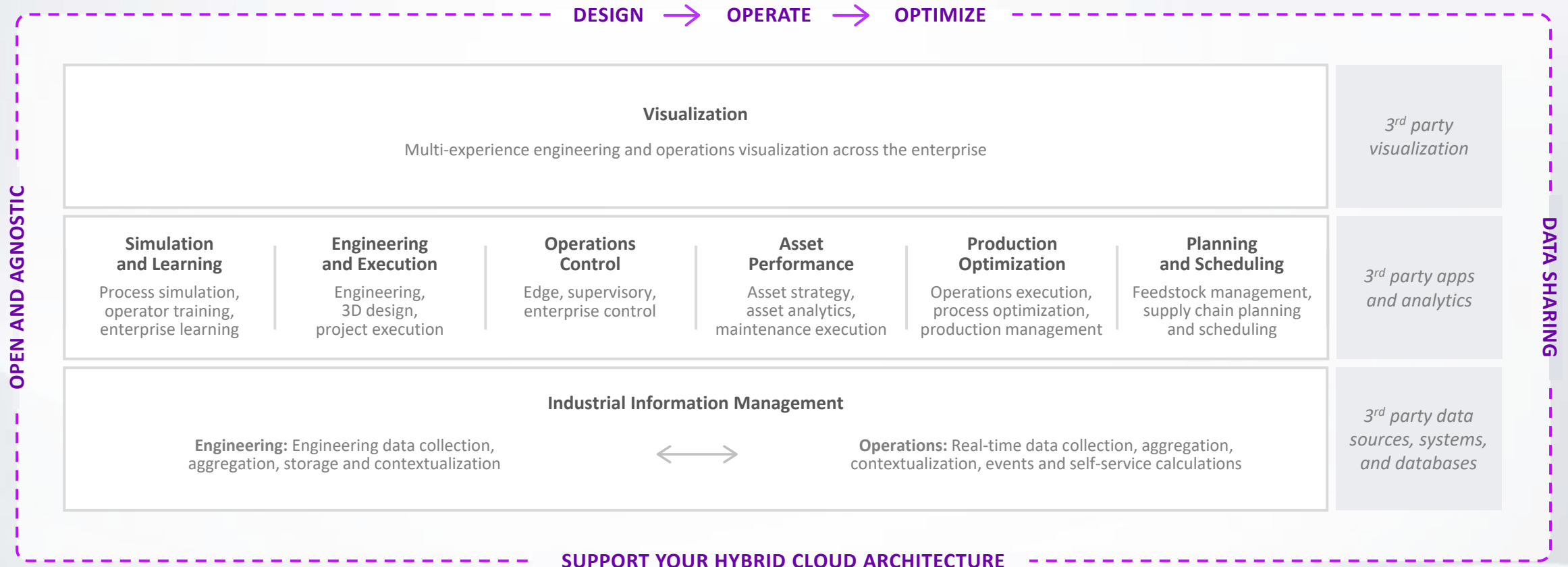
Modern authentication

The AVEVA PI Server



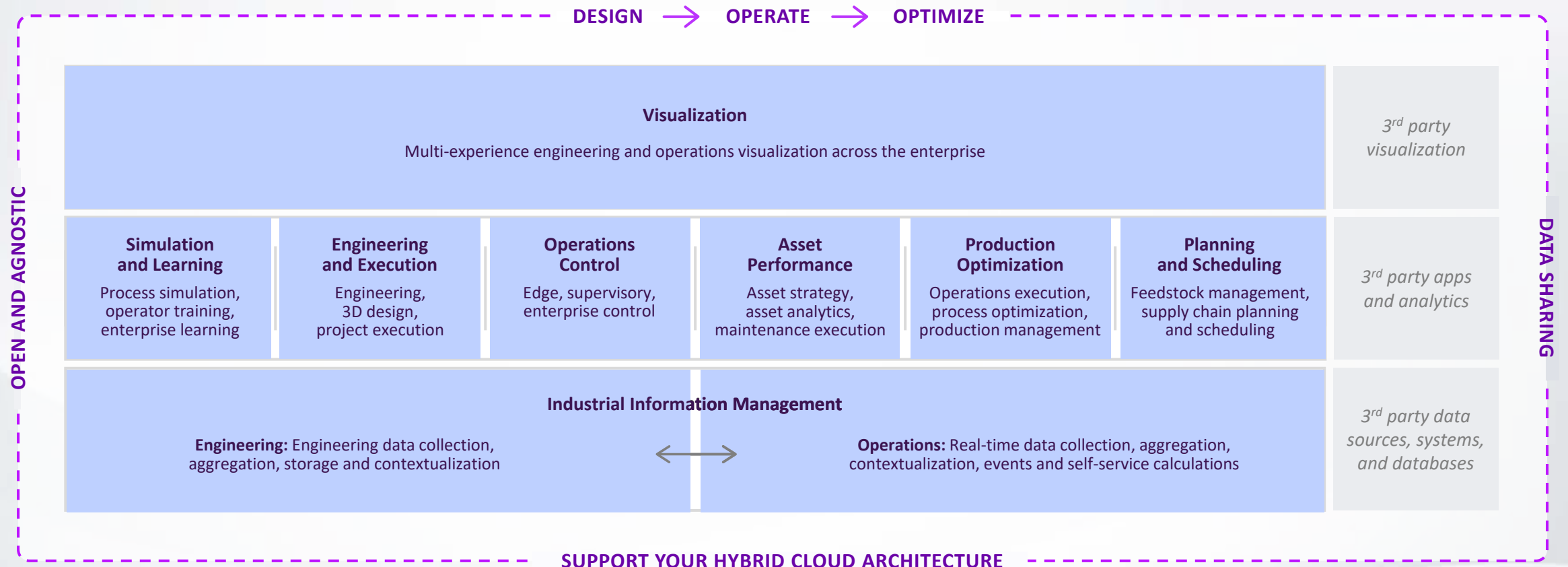
Delivering a complete digital thread, purpose-built for industry

Accelerate time to value with flexible, scalable, and trusted industrial hybrid SaaS solutions



The value of AVEVA and the PI System

Attend the talk at the end of this track today.






Brian Bostwick


VP Portfolio Management, Operations Information Management

- AVEVA
- brian.bostwick@aveva.com

This presentation may include predictions, estimates, intentions, beliefs and other statements that are or may be construed as being forward-looking. While these forward-looking statements represent our current judgment on what the future holds, they are subject to risks and uncertainties that could result in actual outcomes differing materially from those projected in these statements. No statement contained herein constitutes a commitment by AVEVA to perform any particular action or to deliver any particular product or product features. Readers are cautioned not to place undue reliance on these forward-looking statements, which reflect our opinions only as of the date of this presentation.

The Company shall not be obliged to disclose any revision to these forward-looking statements to reflect events or circumstances occurring after the date on which they are made or to reflect the occurrence of future events.

 [linkedin.com/company/aveva](https://www.linkedin.com/company/aveva)

 [@avevagroup](https://twitter.com/avevagroup)

ABOUT AVEVA

AVEVA is a global leader in industrial software, driving digital transformation and sustainability. By connecting the power of information and artificial intelligence with human insight, AVEVA enables teams to use their data to unlock new value. We call this Performance Intelligence. AVEVA's comprehensive portfolio enables more than 20,000 industrial enterprises to engineer smarter, operate better and drive sustainable efficiency. AVEVA supports customers through a trusted ecosystem that includes 5,500 partners and 5,700 certified developers around the world. The company is headquartered in Cambridge, UK, with over 6,500 employees and 90 offices in over 40 countries.

Learn more at www.aveva.com