

17 MAY 2022

AVEVA PI Server

Now and looking forward

Presented by: Kevin Geneva

AVEVA

Agenda

- Quick recap of the PI Server
- What have we been up to?
- What's coming?

π



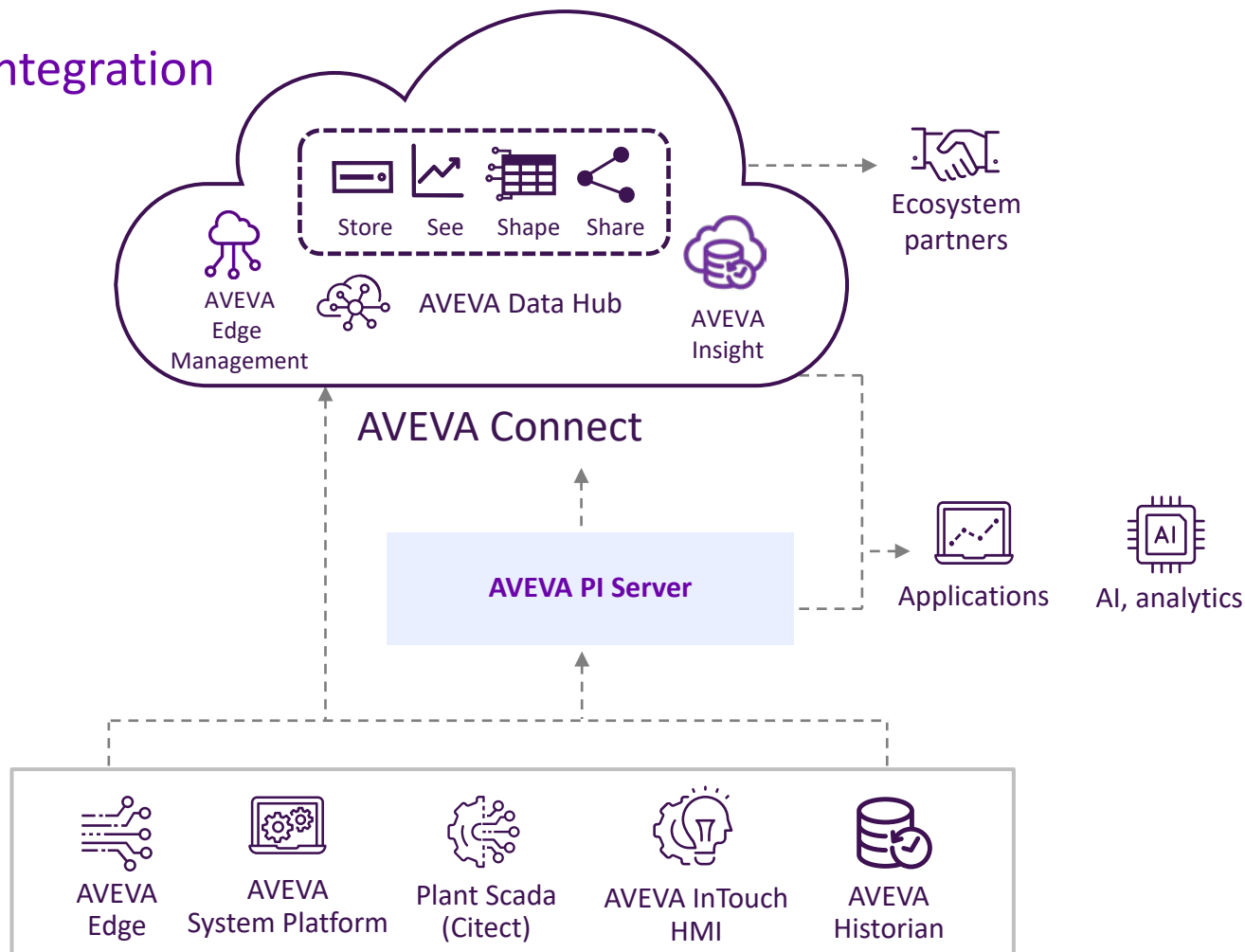
The AVEVA PI Server (in 5 minutes or less)



Better together: AVEVA PI Server & Operations Control

Optimize your operations with tighter integration

- **Data integrity:** ensuring granularity, accuracy, reliability and context
- **Enterprise-wide:** delivering secure and efficient data transfer, agility and scalability
- **Unified solutions:** proving better integration while maintaining neutrality and boosting sustainability



PI System

At a glance:

Real-time data is key to increasing operating efficiency and reliability, as well as integrating more closely with supply chain partners. PI System provides a secure hub for contextualized operations data that can be extended via the cloud to give data access to any authorized person, application or tool in any location.



The PI System Advantages



Highly reliable
system of record



Easy self-service
access and
visualization



Aggregate data
in distributed
environments



Analytics and
event tracking



Attach context &
meaning to data



Fast integration
with analytic
tools & apps



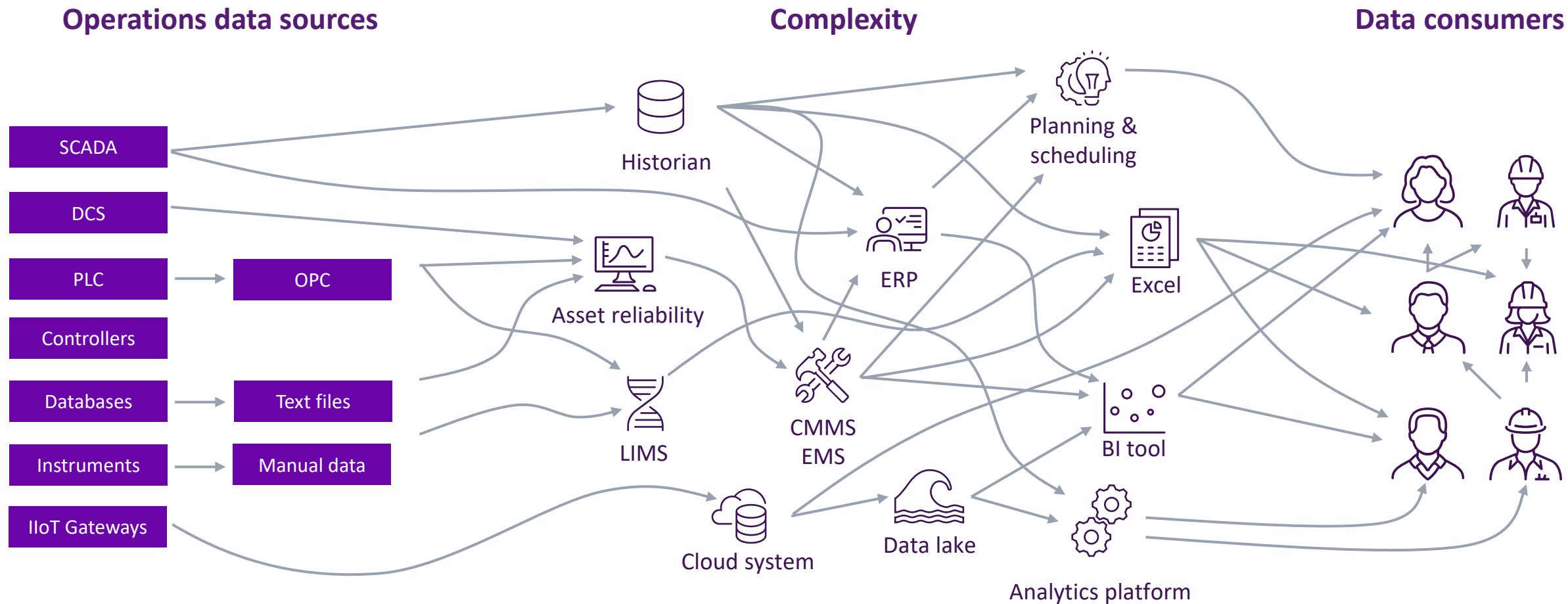
Secure data
across all domains



Supports remote
assets and IIoT
devices

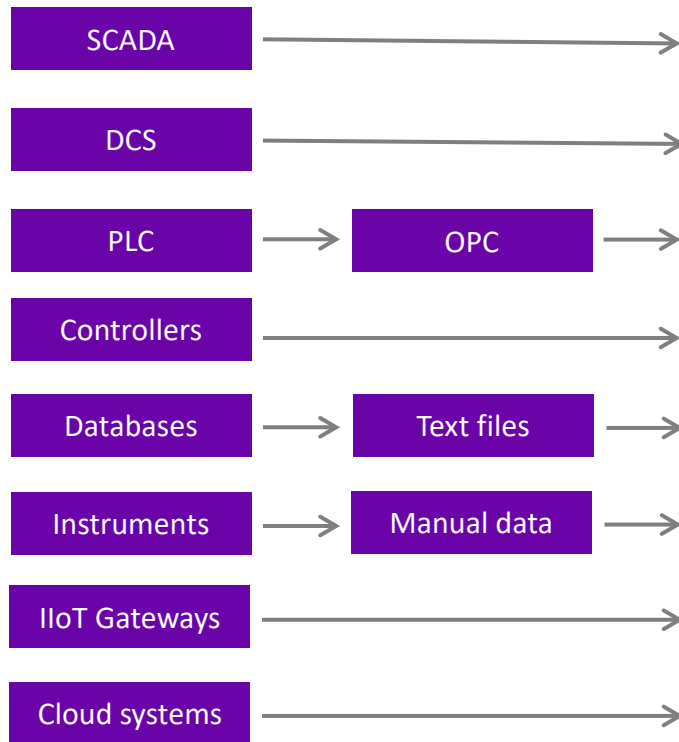
AVEVA

Managing operations data is complex

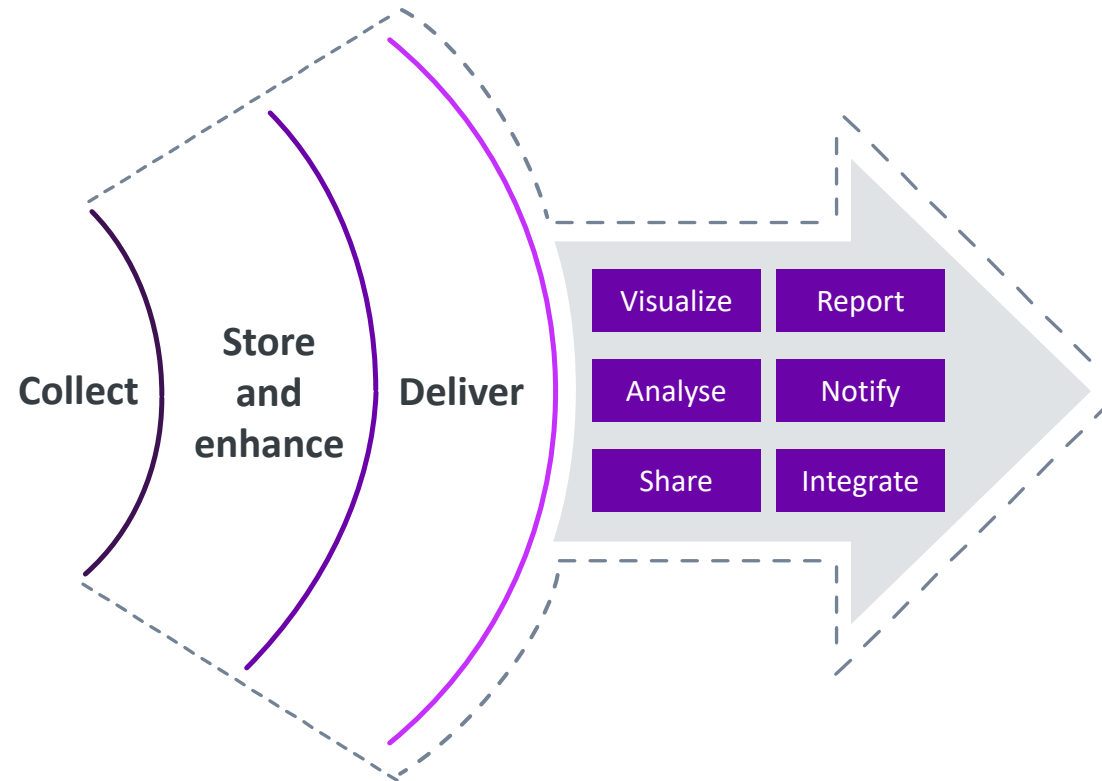


PI System is the industry-leading operations data infrastructure solution

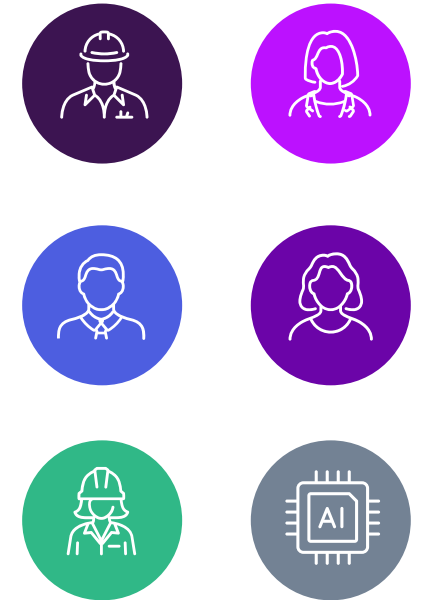
Operations data sources



PI System

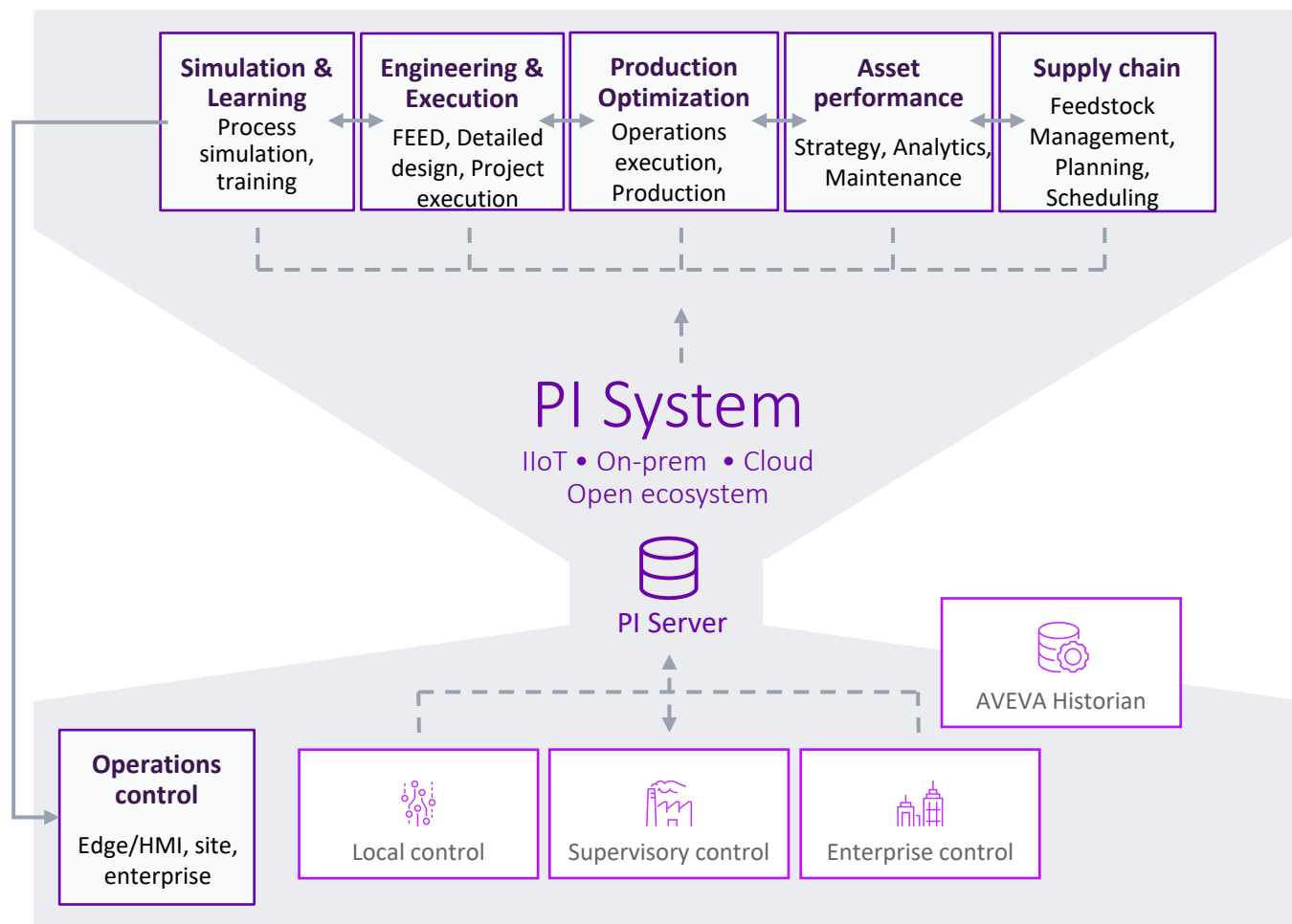


Data consumers



PI System collects, stores & delivers structured and reliable operations data across the enterprise

PI System serves as critical information management layer, supporting AVEVA's operational software portfolio.



1

Better data

Accuracy, reliability, context, scope and scale

2

Smarter solutions

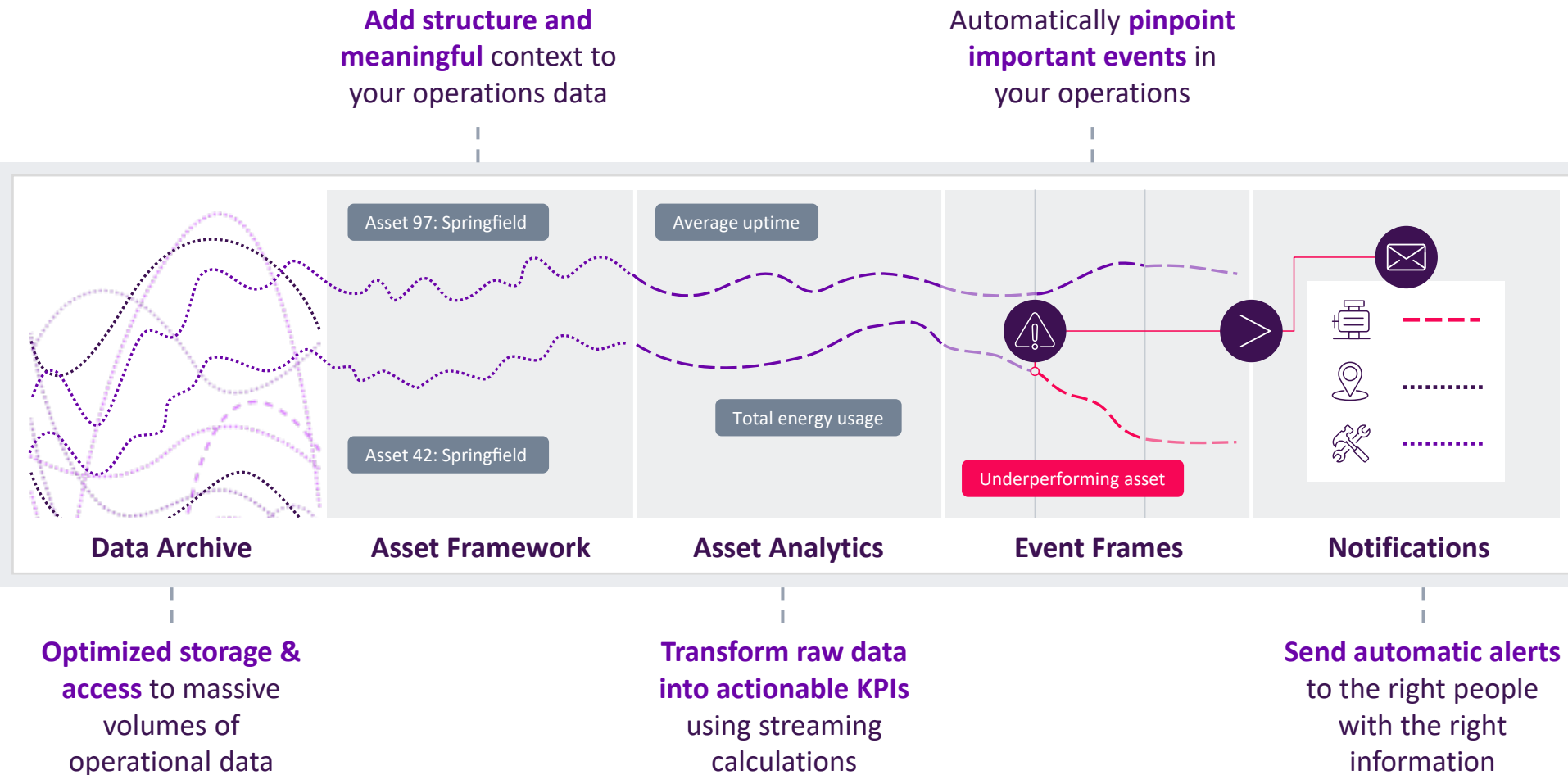
With better integration, while maintaining neutrality

3

Proven outcomes

Efficiency, agility, reliability, sustainability

AVEVA PI Server turns data into decision-ready information





What have we been up to?

AVEVA

A substantial amount of mandatory infrastructure work

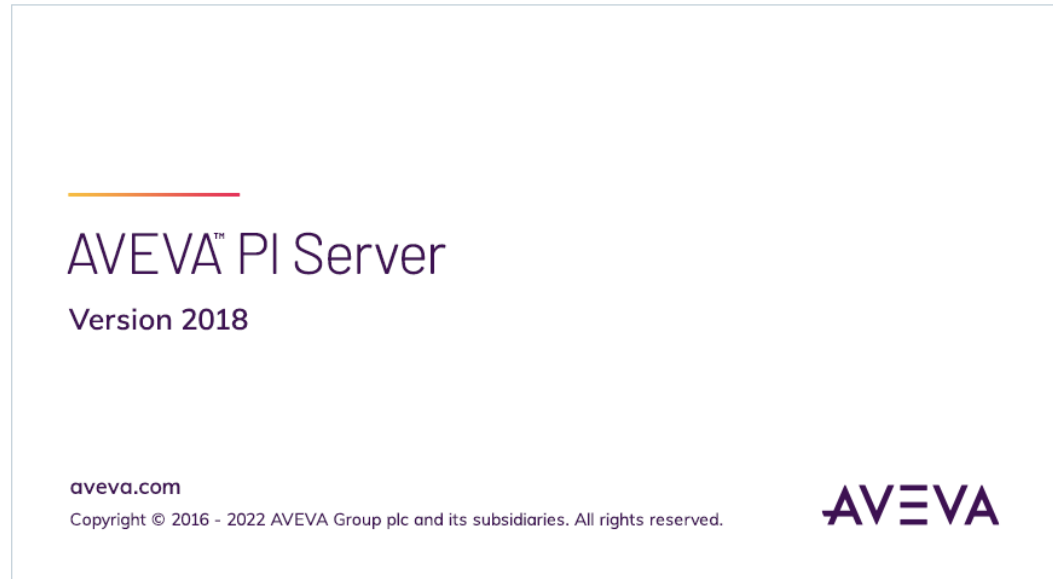
- Teams have been working on the PI Server continuously
- Another layer of protection for the code





AVEVA PI Server 2018 SP3 Patch 4

- Continuing our commitment to delivering robust, reliable software
- Why keep patching?



Stability and reliability

- If there is an issue that could affect your operations, we fix it
- Secure but accessible
- Expansive but central





Keeping your system up to date

- We are going to slowly start dropping support for older versions
- We will continue to support
 - PI Data Archive 2012 Patch (3.4.390.18) or later
 - Asset Framework 2015 R2 (2.7.5.7166) or later
- We will always take calls and do our best to help and upgrade paths will always be available

Improving management of Analyses

- Simple filtering on the main page
- Sorting capabilities for columns
- New tabs to manage overall service

How can we improve the PI Server?

[← PI Server](#)

207
votes

Vote

Improve Management of Asset Analytics

Improve PI AF Analysis Handling in PI System Explorer when working with hundreds of analysis with following features:

- Possibility to sort Analysis/Analysis Templates in alphabetic order by Status, Element, Name, Template
- Possibility to filter Analysis by Status, Element, Name, Template, Backfilling
- Select all filters Analysis to Start/Stop and Start Backfilling
Problem is when a certain set of a analyses are selected so they will be handled in one go. It is not possible to group the required ones in a contiguous section of lines in the PSE Management Add-In, manual selection is taking very much time.
- Stop Backfilling for all selected Analysis !!!
This is needed when a backfill is started and takes a long time, but during that period it is encountered that an expression correction is needed.

<https://feedback.osisoft.com/forums/555148-pi-server/suggestions/18610852>

Tools to ease the management of Asset Analytics

Easily find expensive analyses

- One bad Analysis template can impact the whole service
- Built in tools to identify poorly configured analyses
- Come to the Day 3 talk “AF Analytics: Best Practices and Troubleshooting” for a sneak preview

$f(x)$



Winning Integrations

Better together as one AVEVA

- AVEVA Historian Adapter for PI Server and AVEVA Data Hub
- AVEVA Predictive Analytics tighter integration with Asset Framework
- AVEVA's portfolio of industrial software to optimize engineering and operations married with Industry-standard PI System for industrial information management



Looking forward

AVEVA

Modern authentication and the PI System



- Cloud- or hybrid-based IT landscape in deploying and managing the PI System
- Researching claims-based authentication across the PI System

How can we improve the PI Server?

[← PI Server](#)

[Vote](#)

PI System Security with OpenID Connect/OAuth2/Active Directory Federated Services (ADFS)

Please consider enabling PI System Security to use Active Directory Federated Services (ADFS) [OpenID Connect/OAuth2]--the interfaces, buffer, integrators, PI Vision, etc...

As organizations move to Office365 and Cloud/Internet services, this would make authentication/use outside a company's network easier.

<https://feedback.osisoft.com/forums/555148-pi-server/suggestions/31729966>

TELL US MORE




Kevin Geneva


Technical Product Manager

- AVEVA
- Kevin.Geneva@AVEVA.com

This presentation may include predictions, estimates, intentions, beliefs and other statements that are or may be construed as being forward-looking. While these forward-looking statements represent our current judgment on what the future holds, they are subject to risks and uncertainties that could result in actual outcomes differing materially from those projected in these statements. No statement contained herein constitutes a commitment by AVEVA to perform any particular action or to deliver any particular product or product features. Readers are cautioned not to place undue reliance on these forward-looking statements, which reflect our opinions only as of the date of this presentation.

The Company shall not be obliged to disclose any revision to these forward-looking statements to reflect events or circumstances occurring after the date on which they are made or to reflect the occurrence of future events.

 [linkedin.com/company/aveva](https://www.linkedin.com/company/aveva)

 [@avevagroup](https://twitter.com/avevagroup)

ABOUT AVEVA

AVEVA is a global leader in industrial software, driving digital transformation and sustainability. By connecting the power of information and artificial intelligence with human insight, AVEVA enables teams to use their data to unlock new value. We call this Performance Intelligence. AVEVA's comprehensive portfolio enables more than 20,000 industrial enterprises to engineer smarter, operate better and drive sustainable efficiency. AVEVA supports customers through a trusted ecosystem that includes 5,500 partners and 5,700 certified developers around the world. The company is headquartered in Cambridge, UK, with over 6,500 employees and 90 offices in over 40 countries.

Learn more at www.aveva.com