

MAY 17 2022

AVEVA PI Vision, AVEVA PI DataLink, PI Integrator for Business Analytics: Delivering your Real-Time Data

Amit Dutta and Victor Zhang

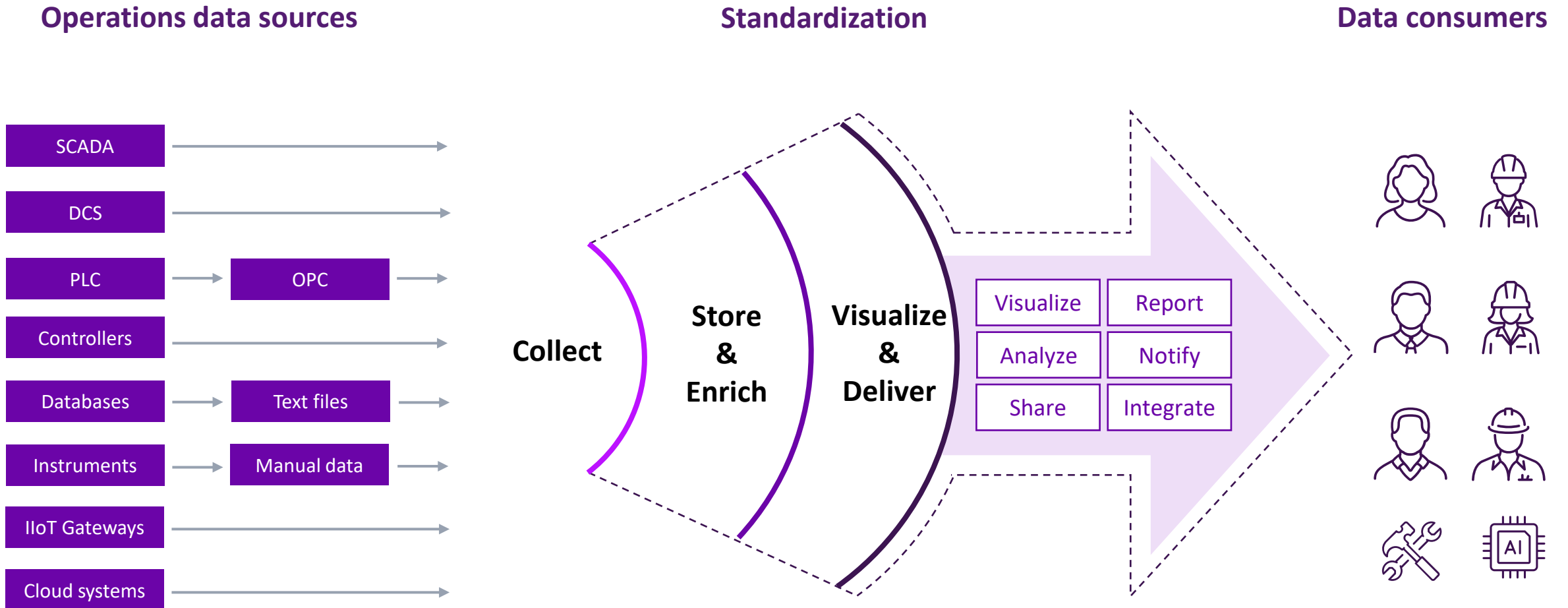
AVEVA

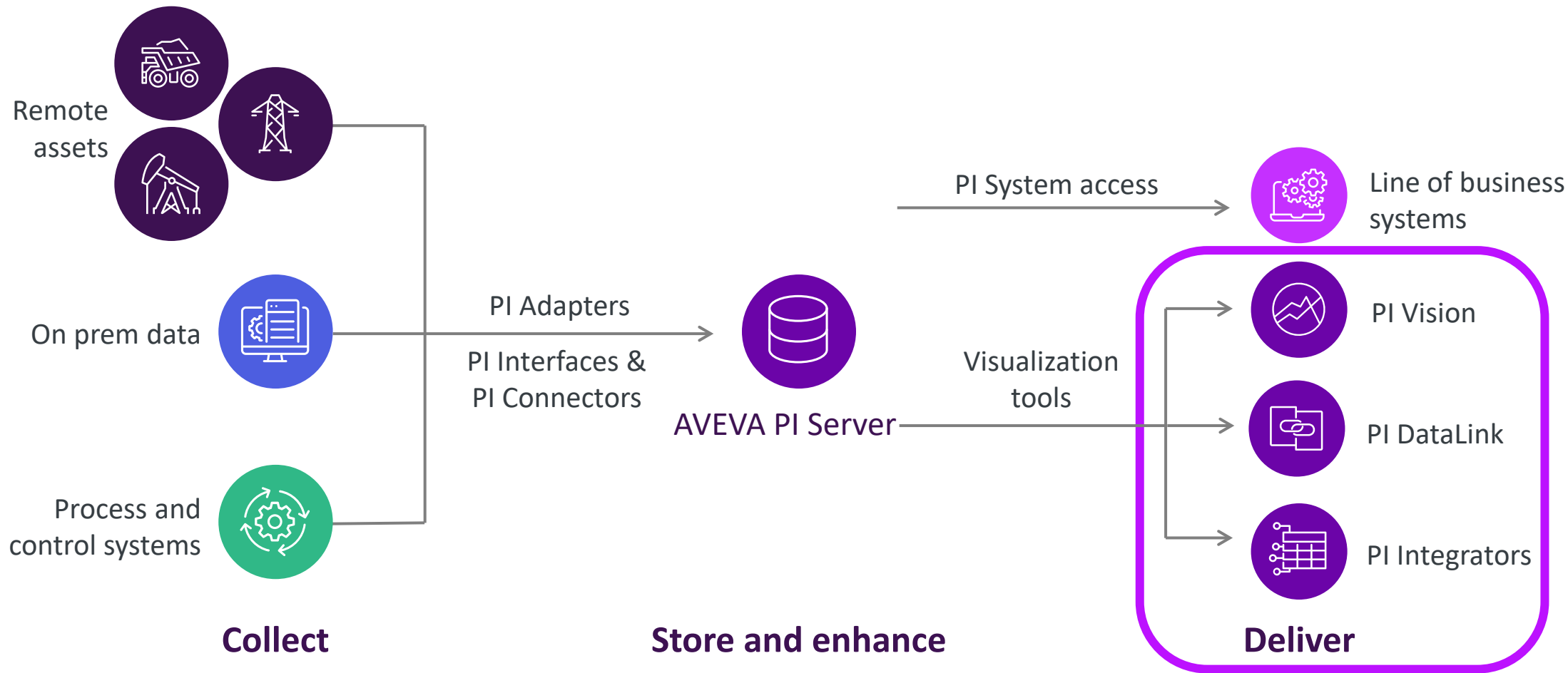


Product Overview and Current Roadmap

- AVEVA PI Vision
- AVEVA PI DataLink
- PI Integrator for Business Analytics

Connect people to data with an infrastructure approach



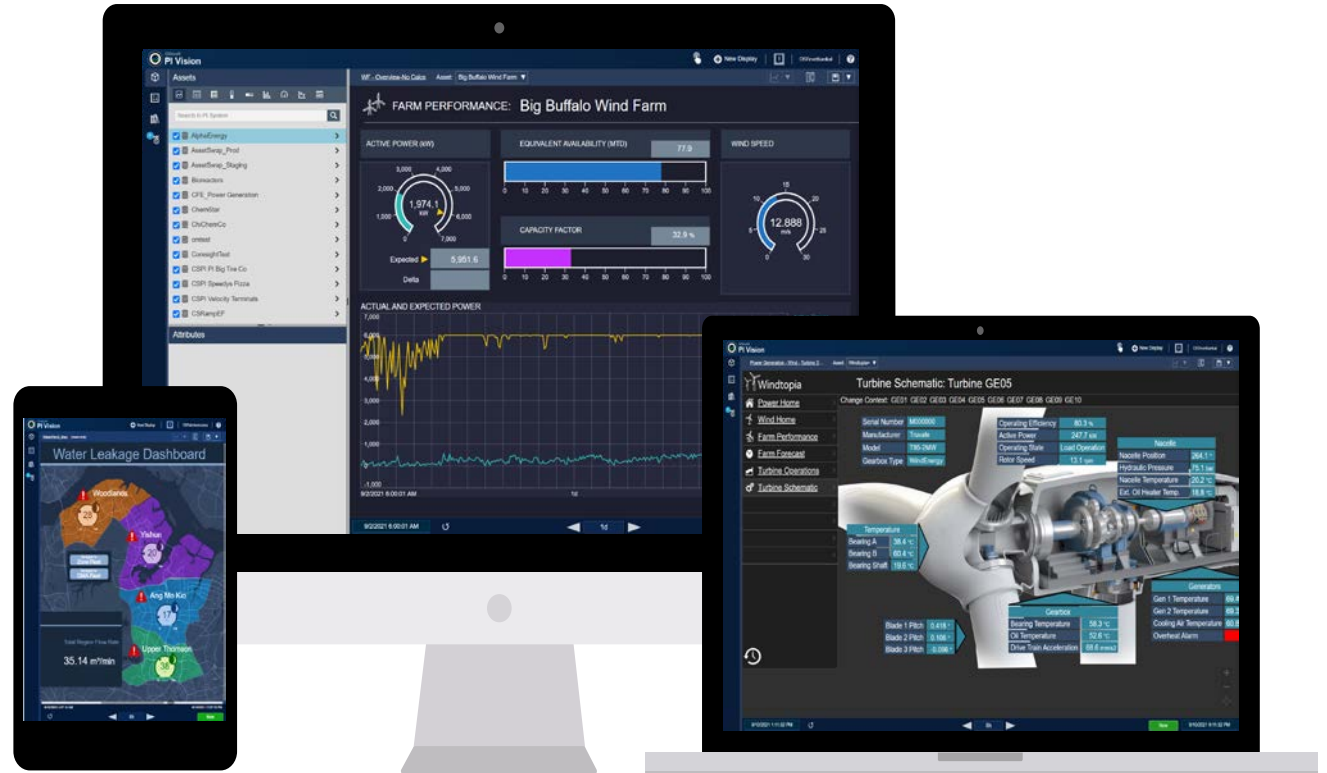




AVEVA PI Vision

AVEVA PI Vision

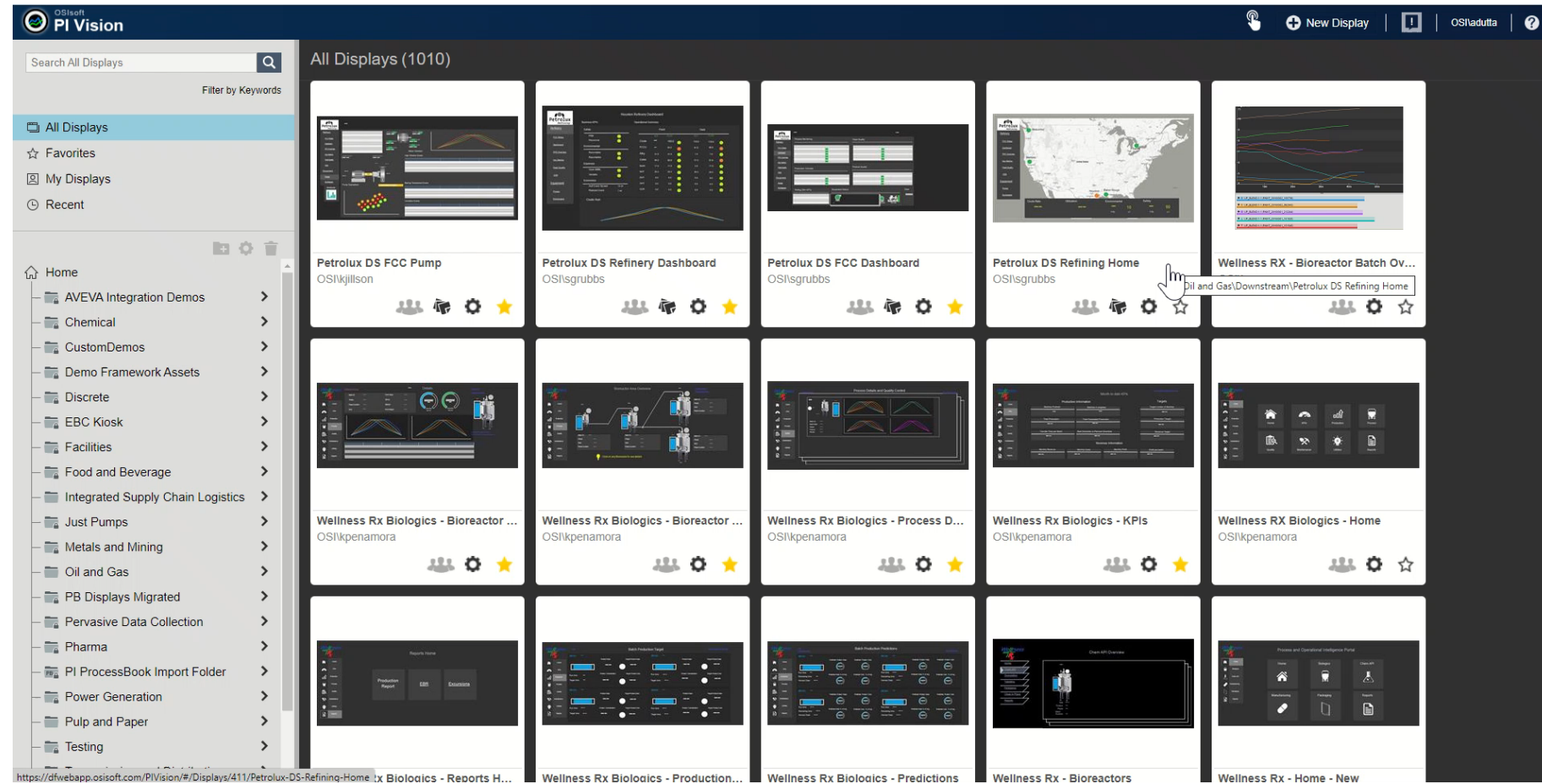
- An **easy to use, self-service, scalable** visualization solution
- Access real-time data from **any device** – phone, tablet, laptop, desktop
- **Share real-time displays** across your organization



Benefits of PI Vision

Easy to use

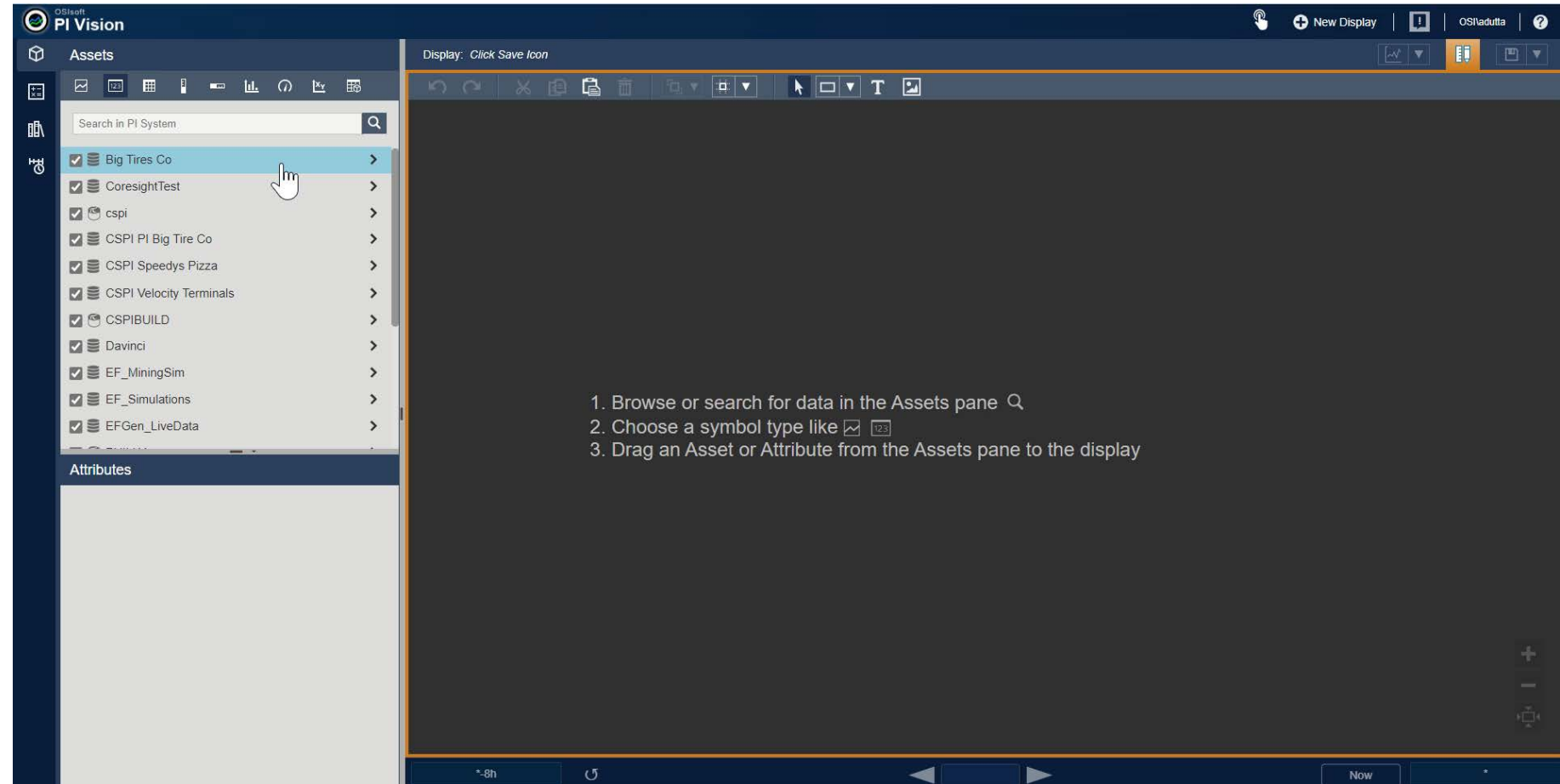
- **Intuitive** interface
- **Dynamic** displays
- Display **navigation**



Benefits of PI Vision

Self-service

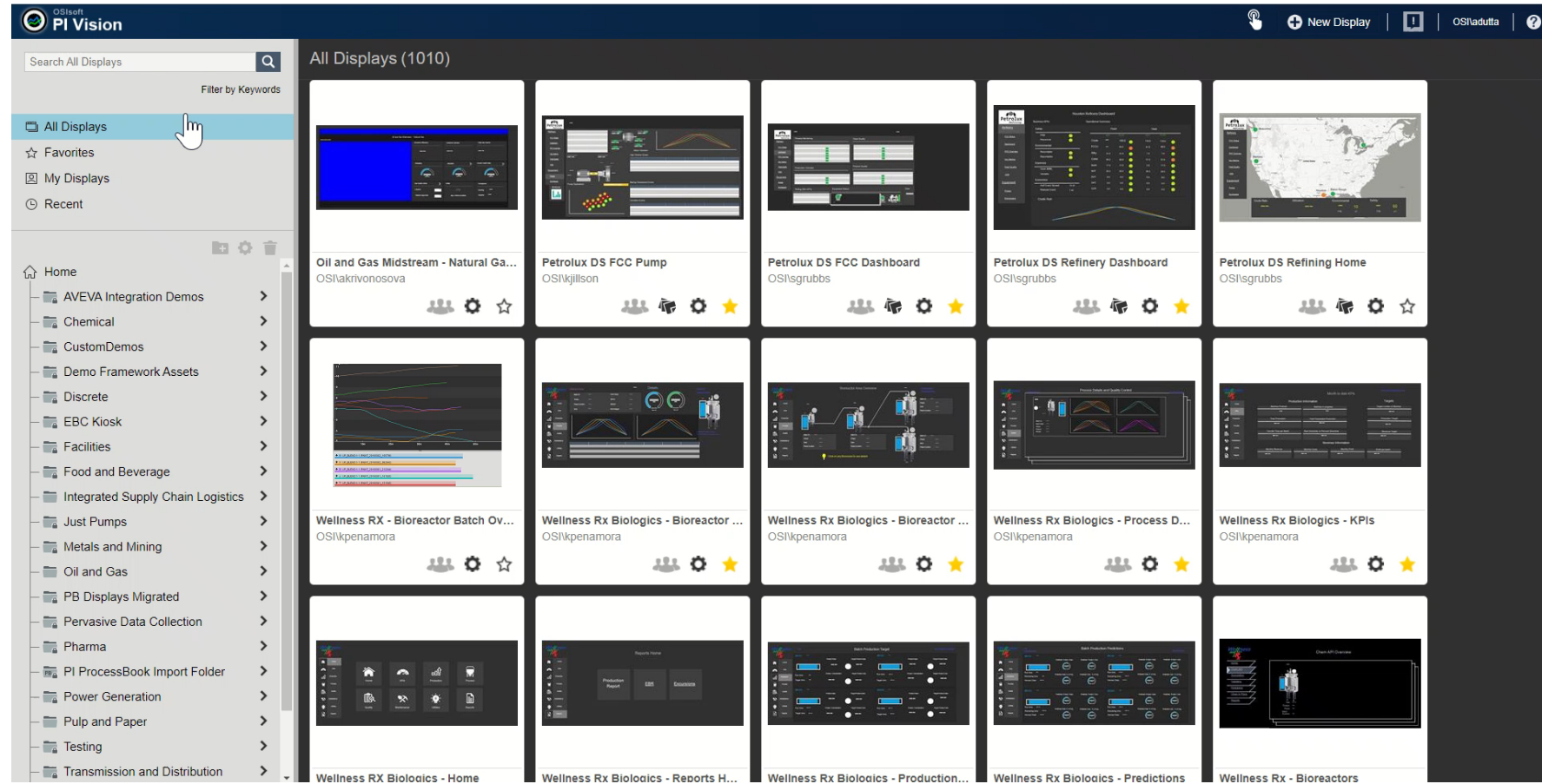
- **Quick access to data**
- **Fast display building**
- **Mobile capabilities**



Benefits of PI Vision

Scalable

- **Reduce** number of displays
- Display **organization**
- **Rapid deployment** and roll-out



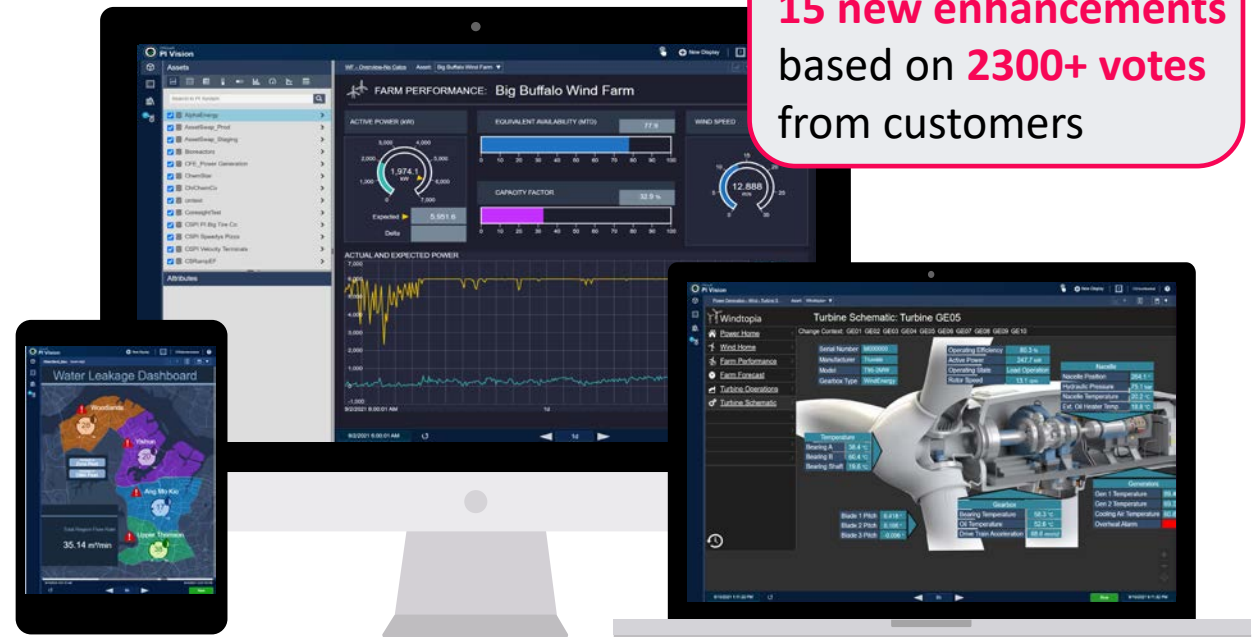
What's currently available for AVEVA PI Vision?

PI Vision 2021

Feature highlights

- Asset-based calculations
- Offline display management
- Event Frame visualization enhancements

PI Vision 2021 includes **15 new enhancements** based on **2300+ votes** from customers



What's next for AVEVA PI Vision?

Recently released: PI Vision 2021

Manageable software

Offline display management

Offline management of PI Vision displays improves manageability

Increased value and scope

Additional event frames context

View event attribute values in Events Table, and set markers and custom scales

Calculations

Local calculations using AF attributes to support ad hoc analysis & troubleshooting

What's next for AVEVA PI Vision?

Recently released: PI Vision 2021

Manageable software

Offline display management

Offline management of PI Vision displays improves manageability

Increased value and scope

Additional event frames context

View event attribute values in Events Table, and set markers and custom scales

Calculations

Local calculations using AF attributes to support ad hoc analysis & troubleshooting



In development

Manageable software

Display theming

Default symbol and display configuration for standardizing display styles

Enhanced event comparisons

New capabilities to compare events, including overlay attributes, freehand zoom

Trend cursor values

Easily view the changes in value as you drag the cursor across the trend

Units of measure

View AF attribute data in the unit of measure most applicable to your end users

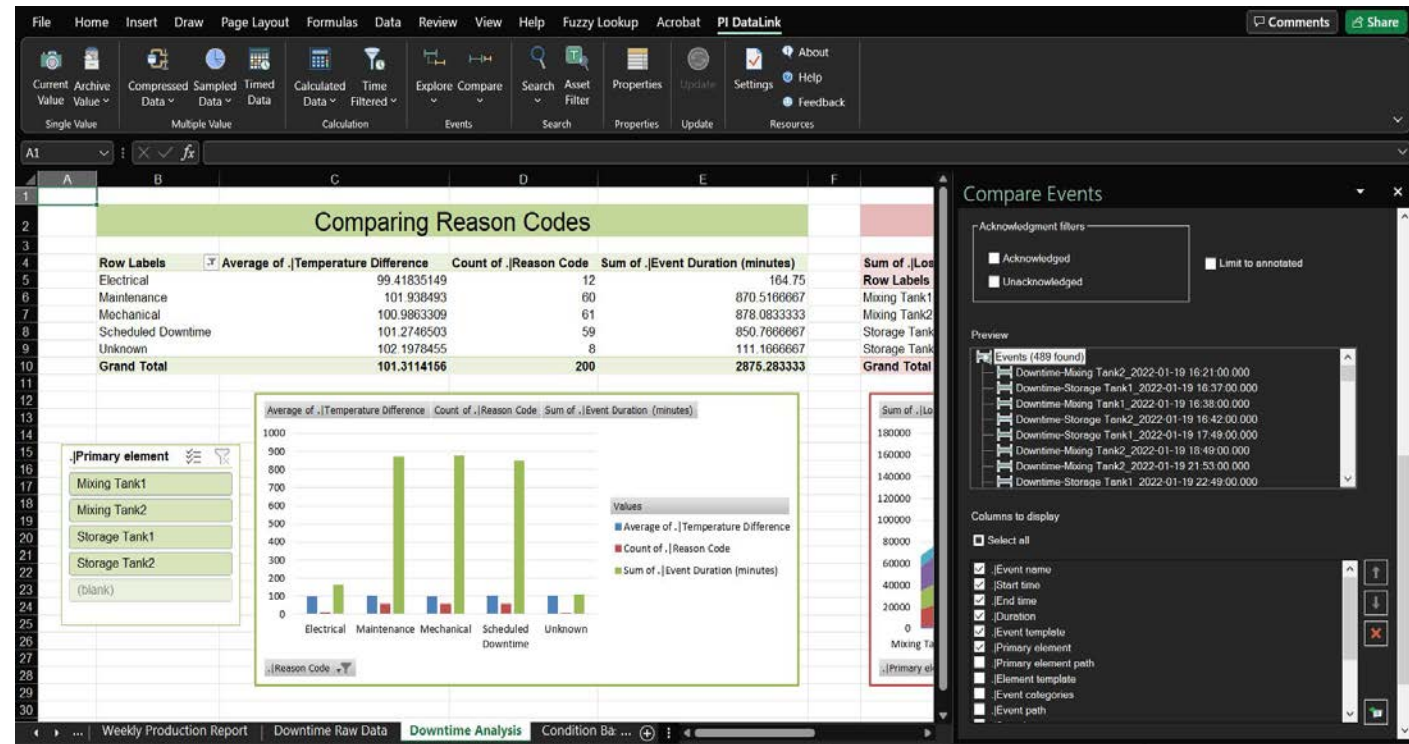


AVEVA PI DataLink



AVEVA PI DataLink

- **Retrieve PI data in Excel** - Turn data you trust into actionable information in a familiar environment.
- **View data in context** – use your PI Server asset models and event frames to contextualize your data and reports.
- **Perform complex analysis** – Combine the power of PI DataLink and Excel to run advanced calculations.



Benefits of PI DataLink



REAL-TIME
MONITORING



TROUBLESHOOTING



OPERATIONS
ANALYSIS



REPORTING

What's New

AVEVA PI DataLink 2022 Is Released



Dynamic Array Support



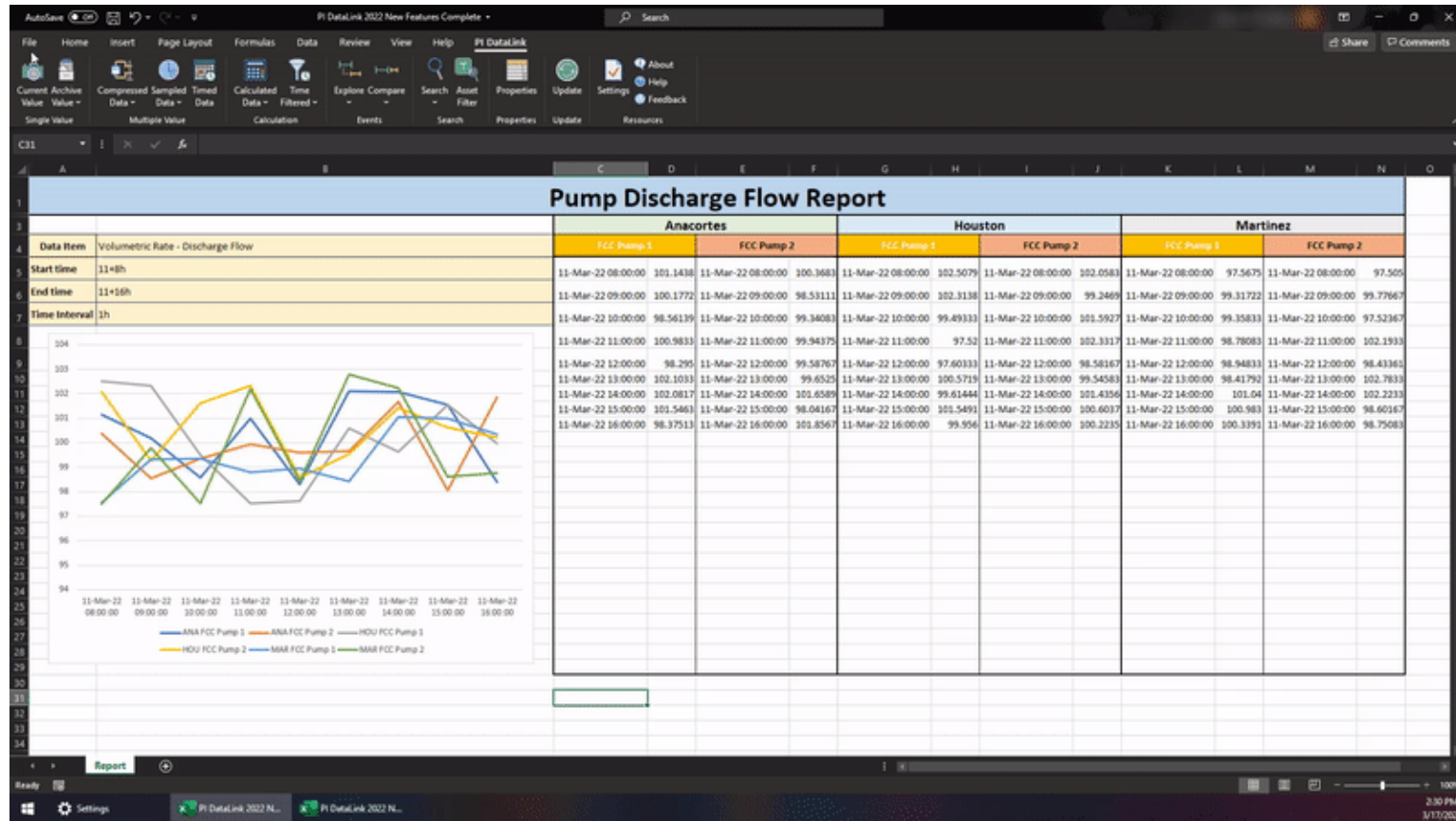
Dark Theme



Simultaneous Shipment of
Language Packages



Security and Supportability
Enhancements





PI Integrator for Business Analytics



PI Integrator for Business Analytics

Less time wrangling, more time analyzing

Format complex datasets you've targeted for analysis.

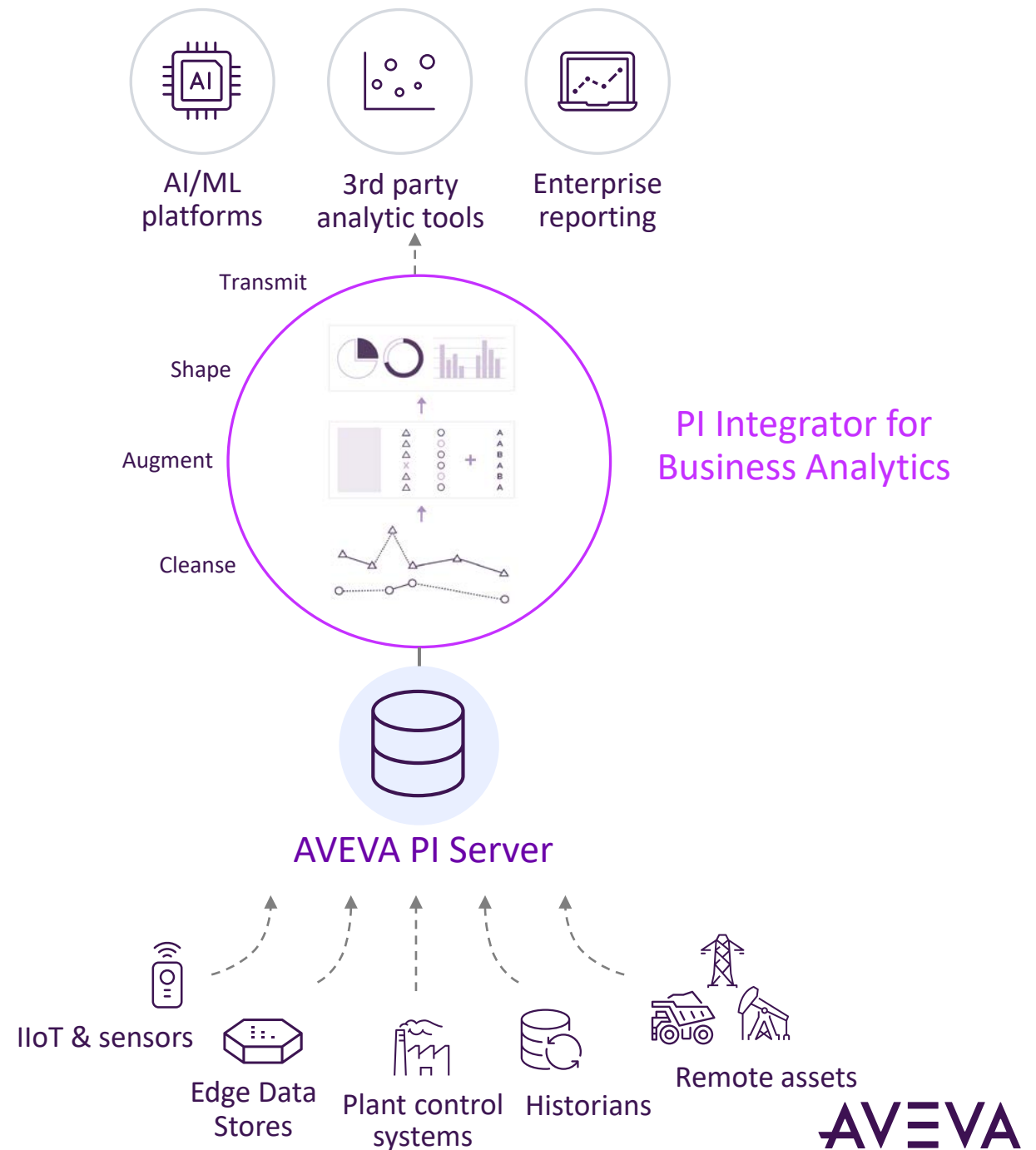
Cleanse the outliers and **uneven data** points.

Shape and **augment** the raw sensor data.

Transmit your analysis-ready data to BI tools and machine learning algorithms.



PI Integrator for Business Analytics sets foundation to accelerate advanced analytics and business intelligence



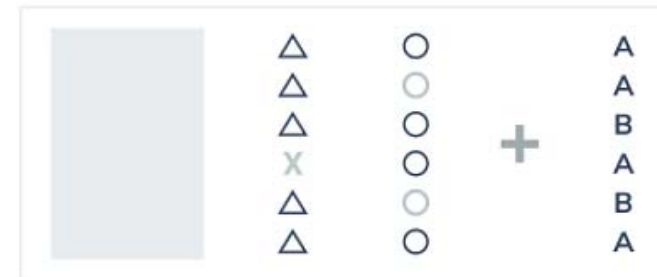
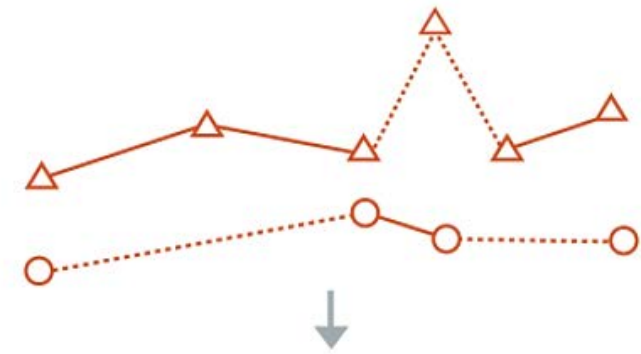
PI Integrators wrangle and format complex datasets so you don't have to



Cleanse outliers and **uneven** data points

Shape and **augment** raw sensor data

Transmit analysis-ready data and to BI tools and ML algorithms



What's next for PI Integrator for Business Analytics?

Recently released: PI Integrator for Business Analytics 2020 R2 Patch 2

Increased
value and
scope

Native integration to ADLS Gen2

Support user migration from ADLS Gen1 to ADLS Gen2

Update for Google BigQuery

AF change monitoring and data updates for Google BigQuery writer

What's next for PI Integrator for Business Analytics?

Recently released: PI Integrator for Business Analytics 2020 R2 Patch 2

Increased
value and
scope

Native integration to ADLS Gen2

Support user migration from ADLS Gen1 to ADLS Gen2

Update for Google BigQuery

AF change monitoring and data updates for Google BigQuery writer



In development

Manageable
software

Stability enhancements

Improve robustness and stability

Additional logging

Improve troubleshooting and awareness of system health

Summary

Powerful tools that deliver PI System data to your users and business applications

Lots of recently released capabilities as well as features in development

Check out Learning Labs for more hands-on learning:

- [PI Vision Basics](#)
- [PI Vision Beyond the Basics](#)
- [PI meets BI](#)



Amit Dutta

Technical Product Manager

- AVEVA
- Amit.Dutta@aveva.com



Victor Zhang

Technical Product Manager

- AVEVA
- Victor.Zhang@aveva.com

Questions?

Please wait for the microphone

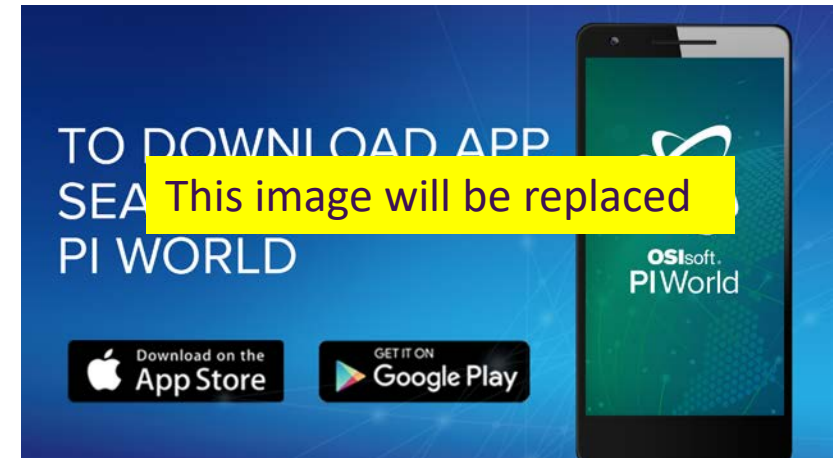
- State your name and company



Please remember to...


Complete the survey!


- Navigate to this session in the mobile agenda for the survey



This presentation may include predictions, estimates, intentions, beliefs and other statements that are or may be construed as being forward-looking. While these forward-looking statements represent our current judgment on what the future holds, they are subject to risks and uncertainties that could result in actual outcomes differing materially from those projected in these statements. No statement contained herein constitutes a commitment by AVEVA to perform any particular action or to deliver any particular product or product features. Readers are cautioned not to place undue reliance on these forward-looking statements, which reflect our opinions only as of the date of this presentation.

The Company shall not be obliged to disclose any revision to these forward-looking statements to reflect events or circumstances occurring after the date on which they are made or to reflect the occurrence of future events.

 [linkedin.com/company/aveva](https://www.linkedin.com/company/aveva)

 [@avevagroup](https://twitter.com/avevagroup)

ABOUT AVEVA

AVEVA is a global leader in industrial software, driving digital transformation and sustainability. By connecting the power of information and artificial intelligence with human insight, AVEVA enables teams to use their data to unlock new value. We call this Performance Intelligence. AVEVA's comprehensive portfolio enables more than 20,000 industrial enterprises to engineer smarter, operate better and drive sustainable efficiency. AVEVA supports customers through a trusted ecosystem that includes 5,500 partners and 5,700 certified developers around the world. The company is headquartered in Cambridge, UK, with over 6,500 employees and 90 offices in over 40 countries.

Learn more at www.aveva.com