

MAY 18, 2022

Optimized Wastewater System Operations using the PI System

Biren Saparia, Great Lakes Water Authority

AVEVA



Water System

5     

Treatment Plants



816 miles of
transmission main



88 Member Partners
across **112** communities



3.8 MILLION
PEOPLE SERVED



3 Water
Intakes ↓

19 BOOSTER
PUMP STATIONS



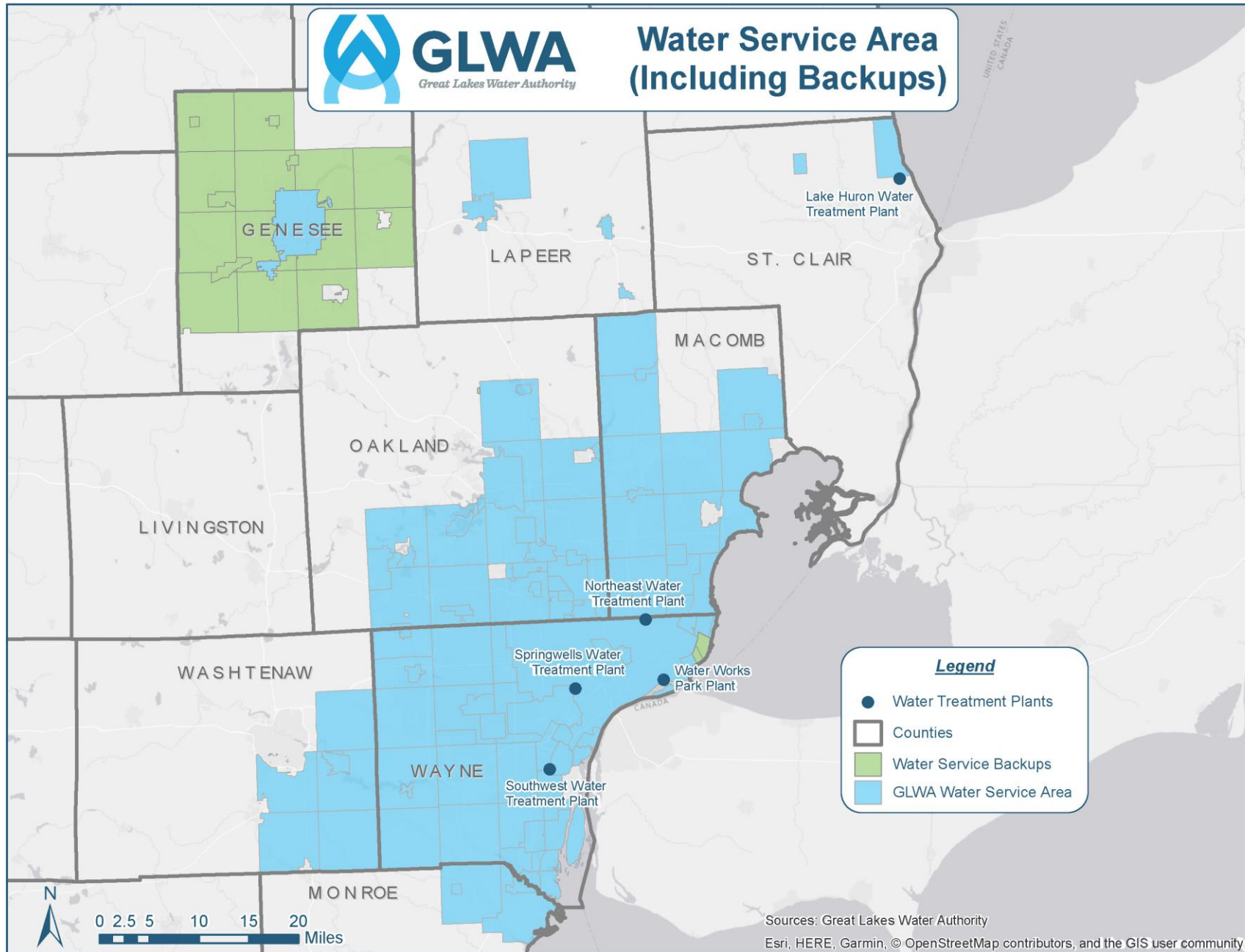
Treatment capacity of **1,720**
million gallons per day



1,698 SQ. MILE
service area

SEPTEMBER 2019

AVEVA





Wastewater System

W
R
R
F



The largest single-site
wastewater treatment
facility in the United
States



195 miles of trunk
sewers & interceptors



19 Member Partners
across **79** communities



2.8 MILLION
PEOPLE SERVED

8 
CSOs

3 
Interceptors

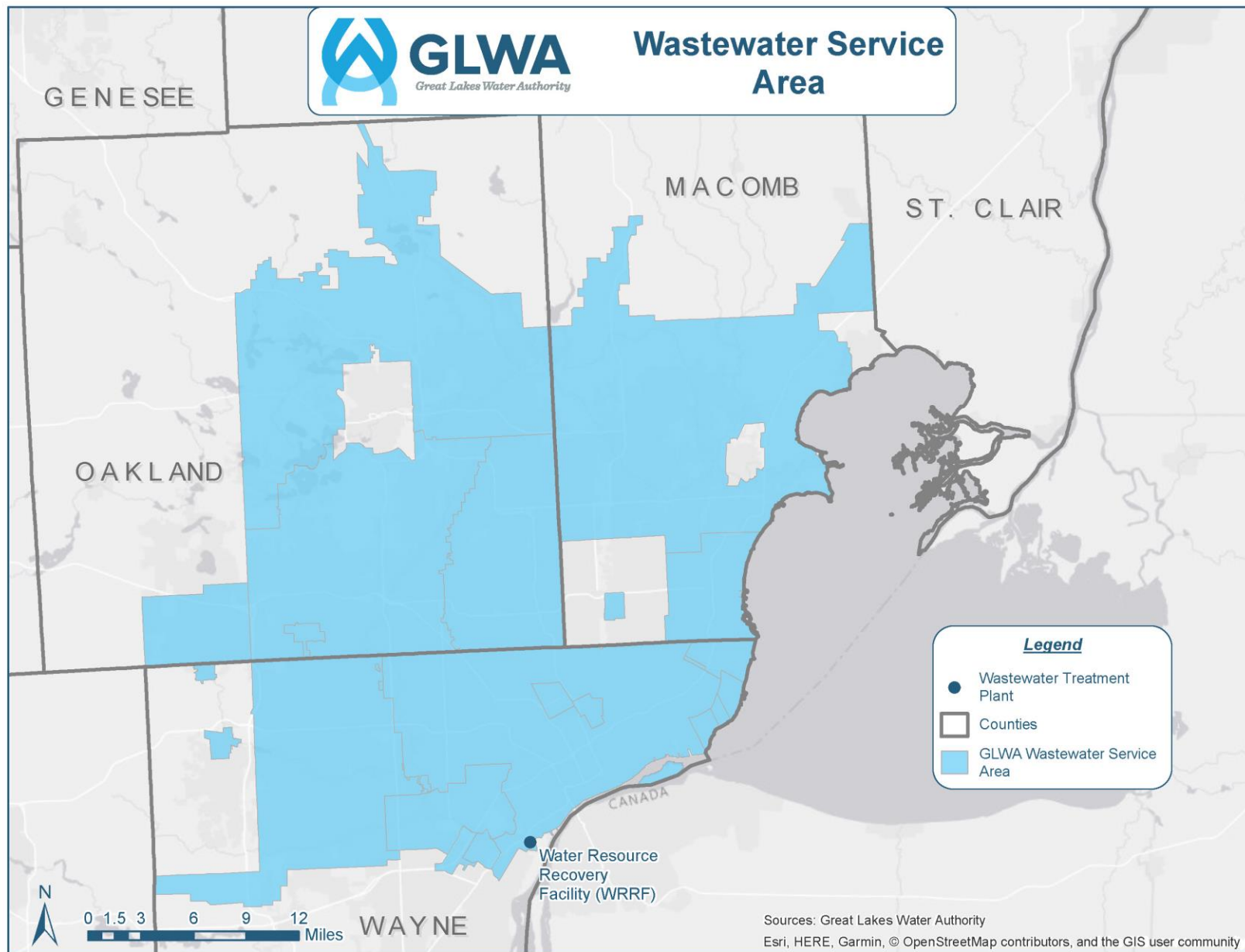
9 PUMP
STATIONS



Treatment capacity of **1,700**
million gallons per day



944 SQ. MILE
service area



GLWA Systems Control Center





Challenge

- Permit Compliance
- Optimization of the Sewer Collection System to minimize the environmental impacts
- Regional Operations Coordination
- 55+ facilities and 500+ remote facilities
 - 24/7 real-time data
- Need for better understanding of the data

Solution

- PI Integrator for Esri ArcGIS
 - Spatial visualization
 - Integration of real-time data with GIS
 - Accessibility through desktop and mobile devices
 - Optimization of water and wastewater operations
- PI Vision Dashboards
 - Created PI Vision Dashboards with aggregated data from different system
- PI DataLink
 - Utilized PI Datalink to create Hydraulic Viewer for better visualization

Types of Data

Sewer Levels

River Levels

Rain Gages

Sewer Meters

Sewer Pump
Stations

CSO Basin

WRRF

Water Quality
Monitors

Backwater
Gate Proximity
Switches

Inclinometers

Inflatable
Dams

Valve Remotes

Multiple Systems

DCS

Rockwell

Schneider

Telog

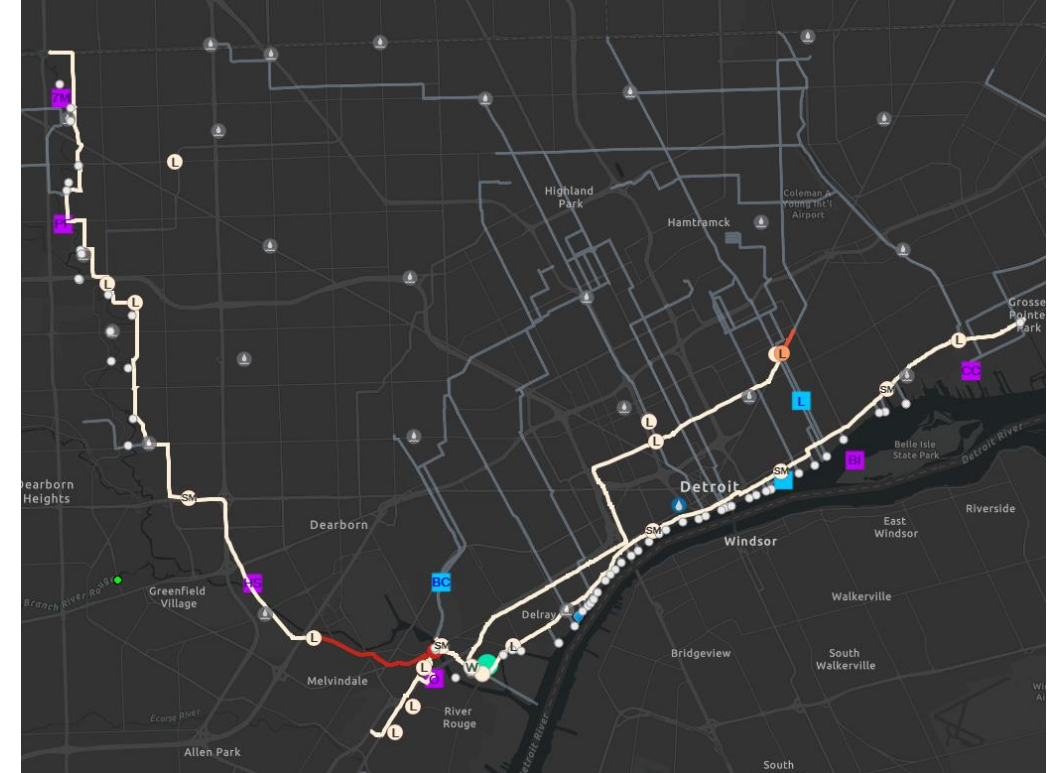
ADS
Flowmeter

Ayekka

AMR/Oracle

Sewer Services: Wet Weather Map

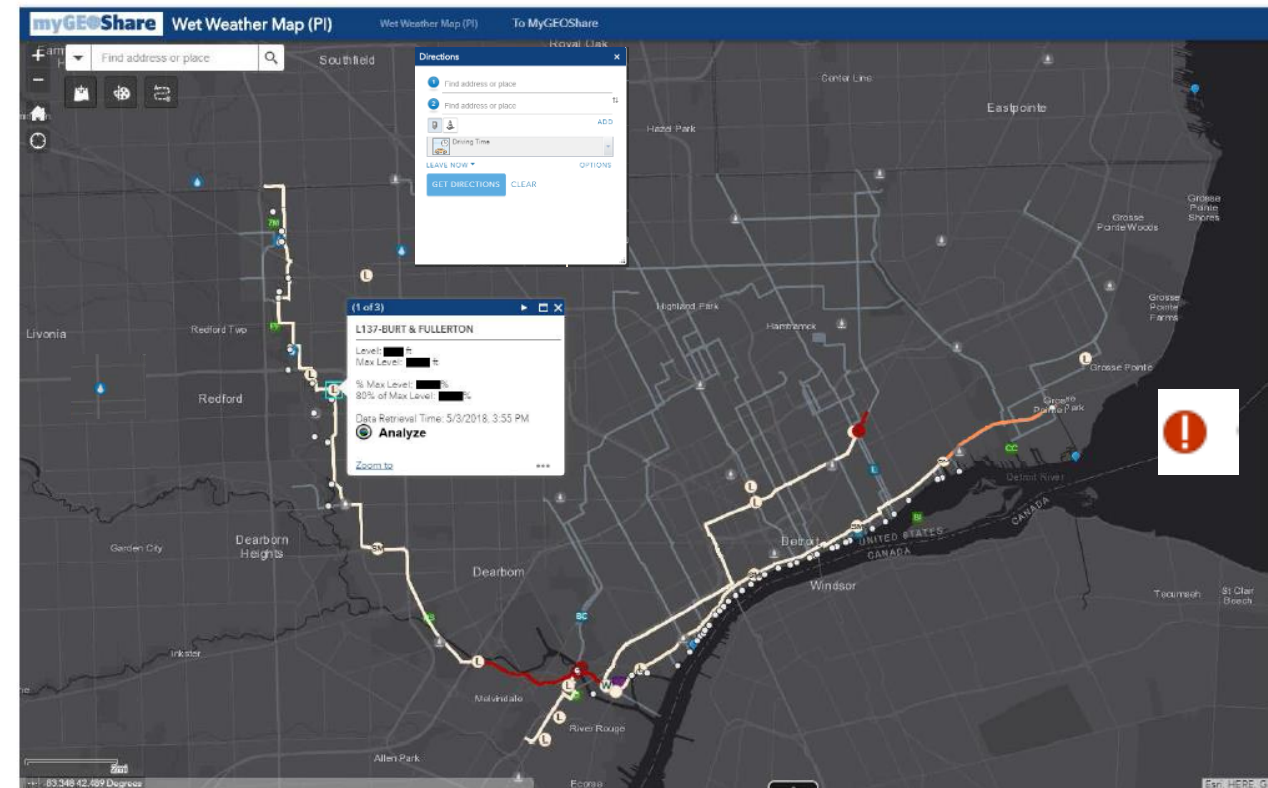
- Wet Weather Map Project Team
 - GLWA Systems Control and IT
 - Softwares: PI Integrator for Esri ArcGIS
- Displays real-time data of remote sites along three major interceptors



Source: <https://dwsd.maps.arcgis.com/apps/webappviewer/index.html?appid=2a0cc7daf20144c0b35e502ccf91e896>

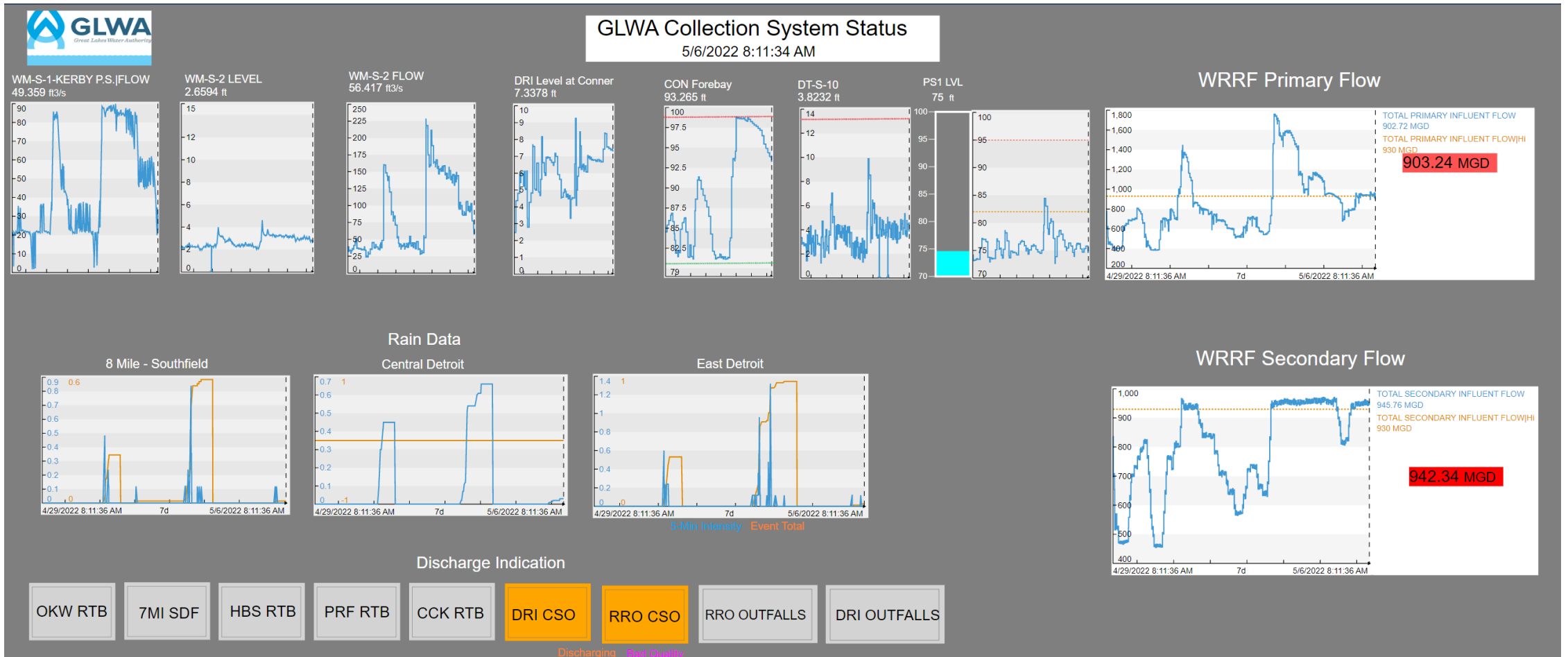
Sewer Services: Wet Weather Map

- Features:
 - Pop-up box with attribute information
 - Interceptor segments' capacity
 - Outfall sites discharging
 - Raining
 - Forecasted precipitation
 - Driving directions
 - Mobile app

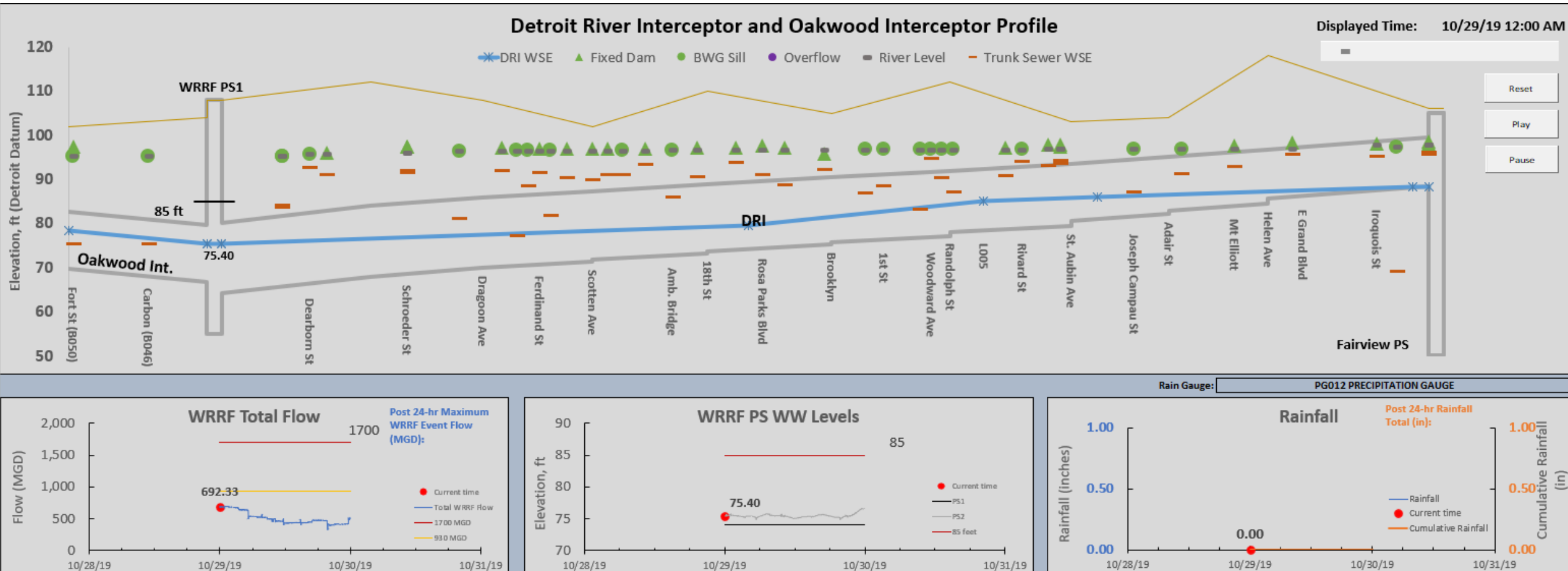


Source: <https://dwsd.maps.arcgis.com/apps/webappviewer/index.html?appid=2a0cc7daf20144c0b35e502ccf91e896>

Regional Operations

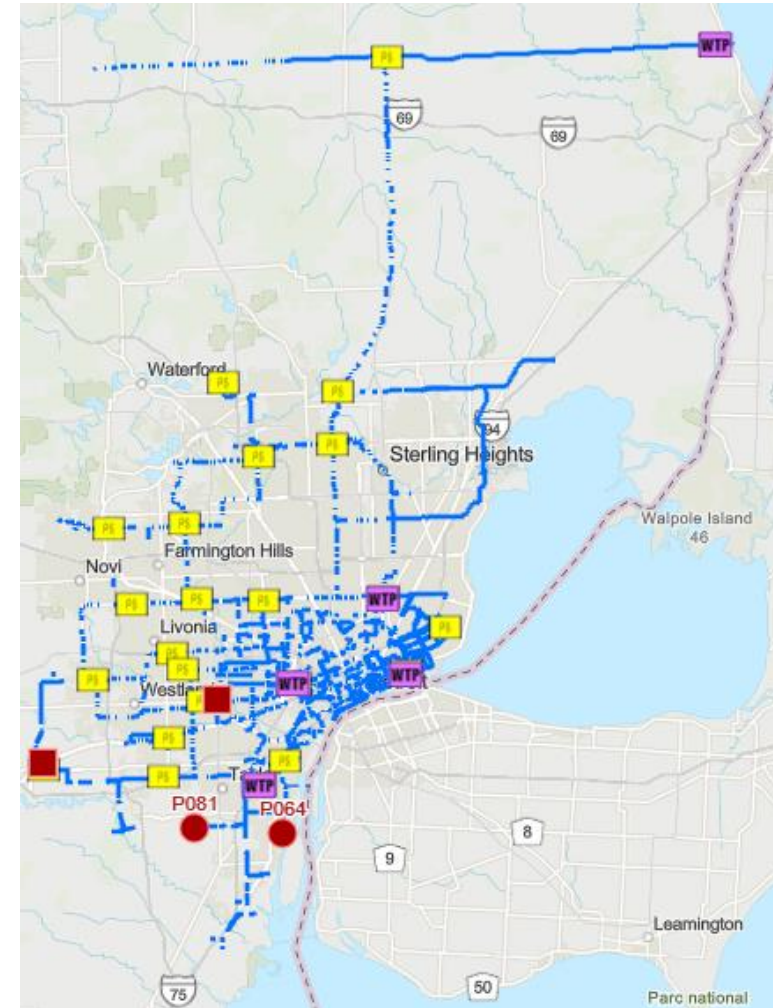


Sewer Hydraulic Viewer



Water Services: Fresh Water Map

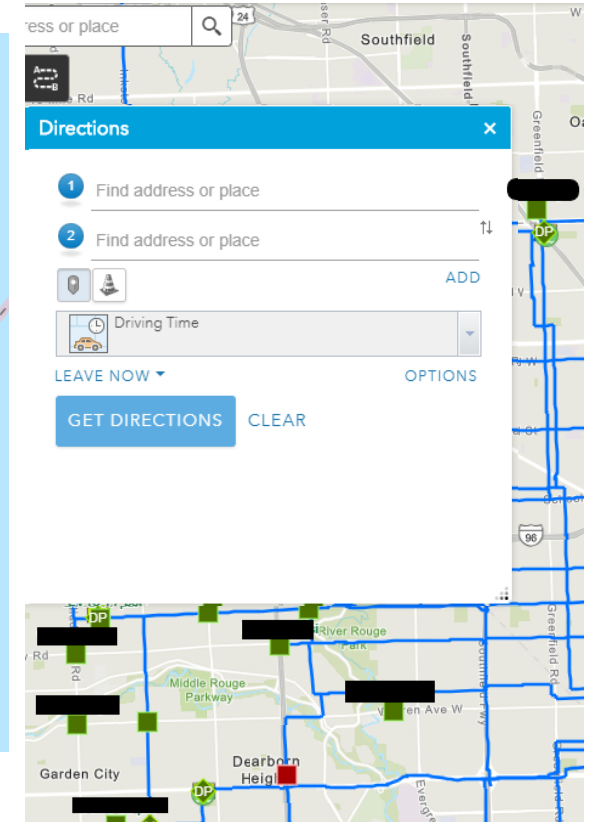
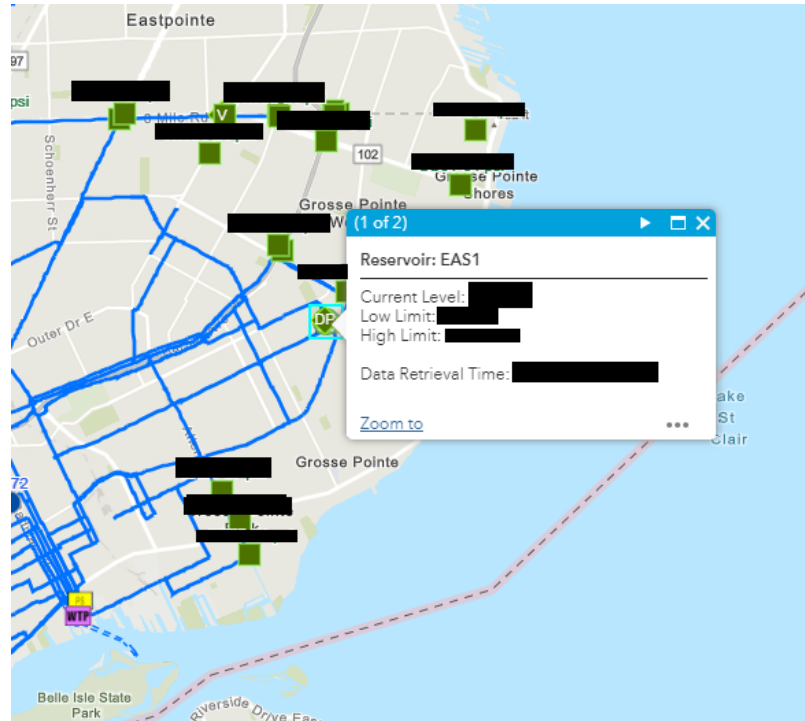
Displays Facility and Remote Sites Data along the transmission lines on a GIS Map



Source: <https://dwsd.maps.arcgis.com/home/webmap/viewer.html?webmap=89907f7ca5d54dcch5bb7e2c37ccd85c>

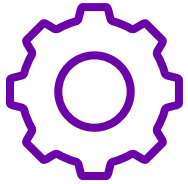
Water Services: Fresh Water Map

- Features:
 - Facilities and Remote Site Data:
 - Pressure
 - Reservoir Levels
 - Alarms
- Driving Directions



Source: <https://dwsd.maps.arcgis.com/apps/webappviewer/index.html?appid=6e8dc394832640469752b141bf0098cf>

World-class upstream operations



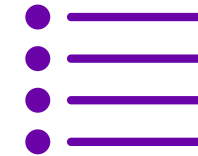
Challenge

- Better spatial visualization of day-to-day operations of the Water and Sewer Systems.



Solution

- Deployed the latest AVEVA PI System technology including PI Integrator for Esri ArcGIS, PI Vision and PI Datalink to create GIS Based real-time dashboards



Benefits

- Improved communication and user engagement among inter-departments. Enables GLWA to host other community's data.
- Response Time has improved for Regulatory Reporting.
- Since becoming live, users have increased by 25% to date.



Thank You

- Biren Saparia
- Manager, Systems Control Center
- Great Lakes Water Authority
- Biren.saparia@glwater.org

[illegible]