

MAY 18, 2022

Unified operation and data platform streamlines efficiency and optimizes water production

Infrastructure Track PI World 2022

Vishal Mahna

AVEVA

Agenda

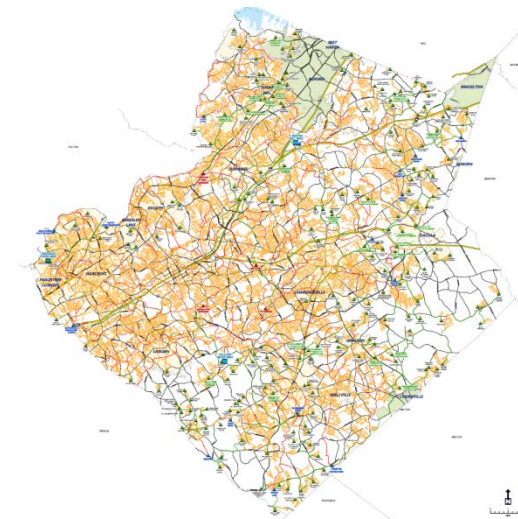


About Gwinnett Water

SCADA and UOC Journey

- Share the journey towards SCADA modernization, deployment of UOC and implementation of cyber security

Lessons learned through this journey



Gwinnett County

Atlanta, Georgia area

- Serving a population of 936,307 from Lake Lanier with a staff of 567 employees
- 245,840 water meter accounts
- 70 million gallon / day capacity
- 4000 miles of distribution pipes
- 3000 miles of sewer pipelines
- 1400 miles of stormwater drainage pipes
- F. Wayne Hill WRC is one of the largest membrane and ozone facilities in the world
 - 13,000 critical assets

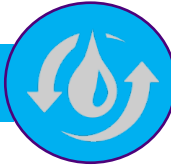


The Department of Water Resources

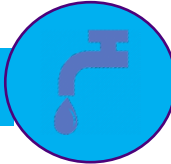


DWR Mission -To provide superior water service at an excellent value

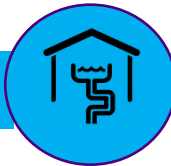
2 Water production plants



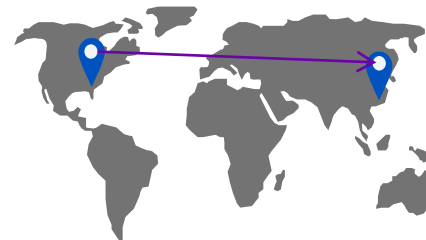
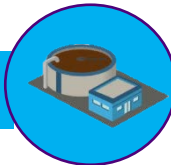
Water Distribution System



WW Collection System



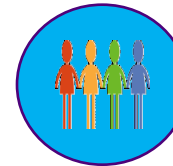
3 WW Reclamation Plants



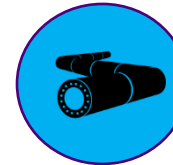
Protecting Public Health



437 square miles



940,000 Population



8,000+ miles of Pipes

F. Wayne Hill WRC is one of the largest membrane and ozone facilities in the world

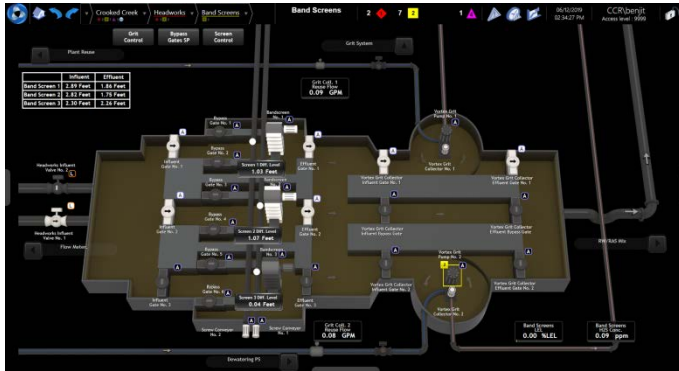
AVEVA

Working to be a utility of the future

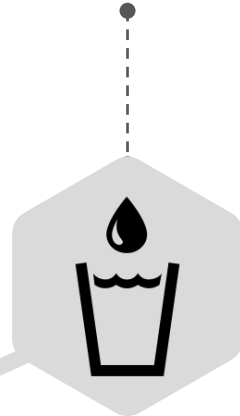


DWR strategy

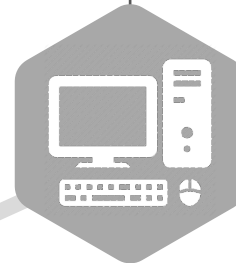
Continuous improvement through personal commitment, innovation, efficiency, and education



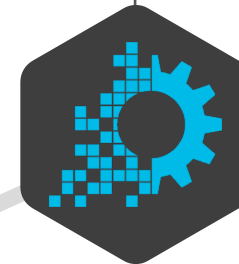
Providing fundamental & reliable services



Optimizing operations, delivery and Support



Transforming operations and systems to meet future needs



Continue to be a utility of the future



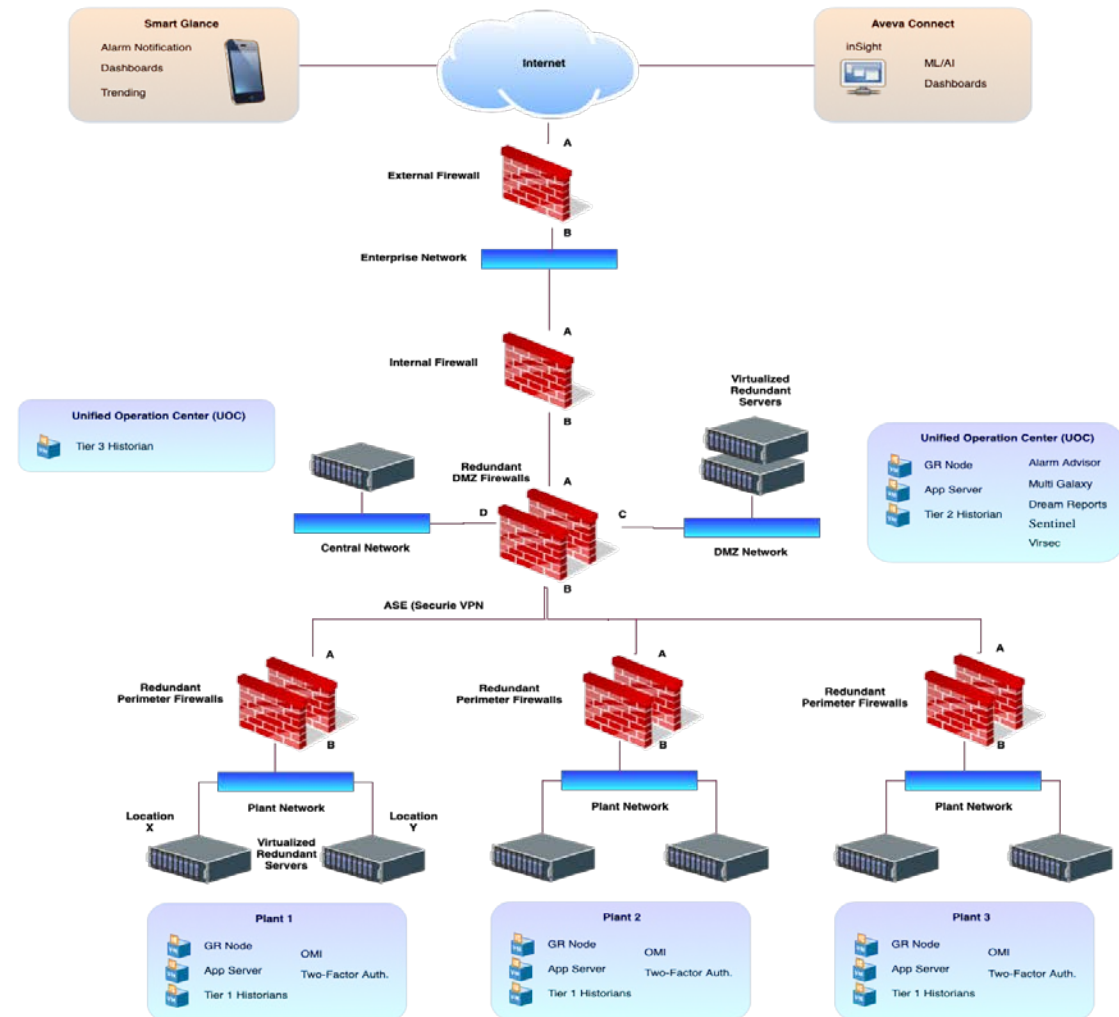
AVEVA

Digital Transformation/Security Lesson Learned

Gwinnett County Digital Transformation

Gwinnett County Water Resources

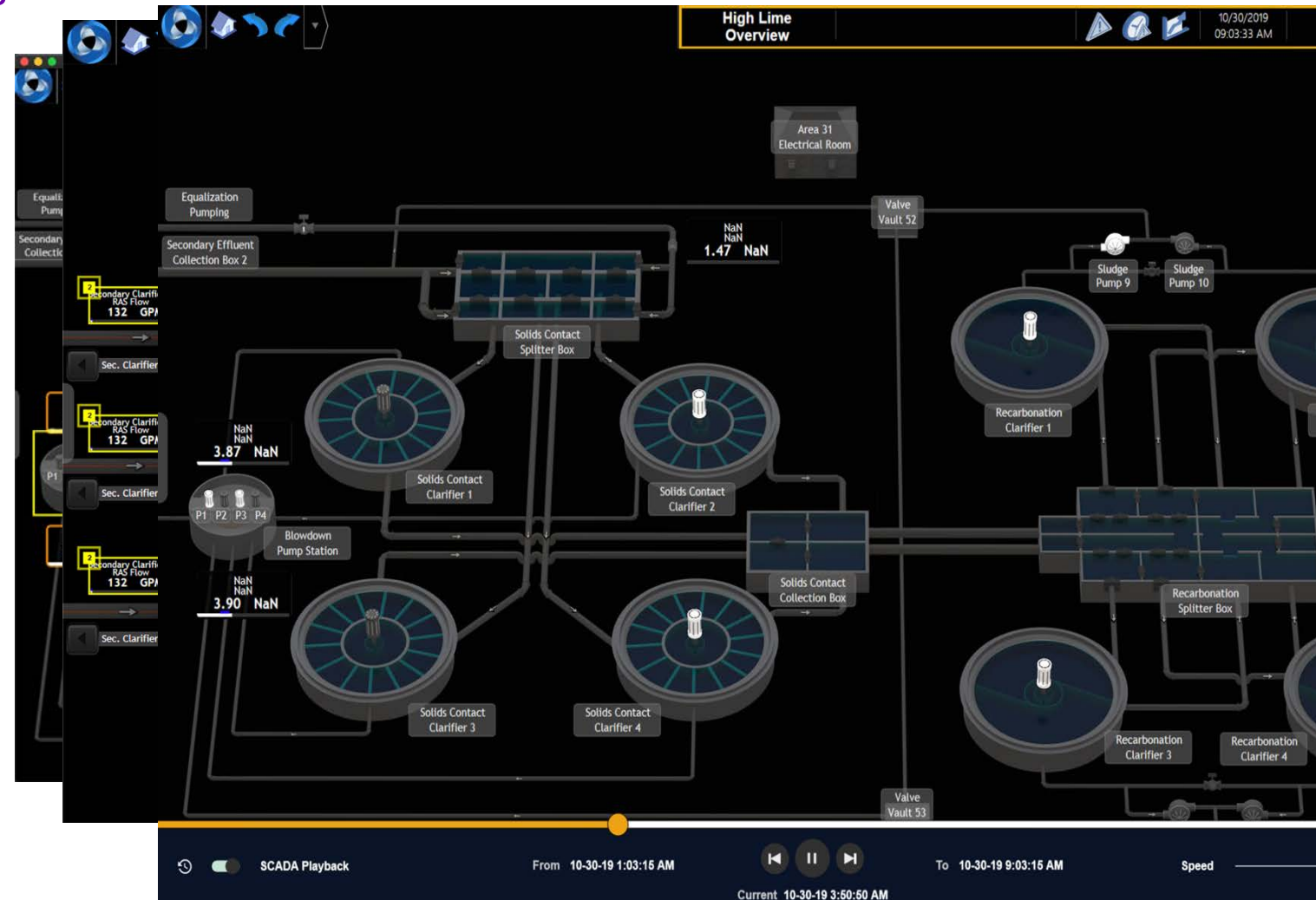
- OMI (Plant Level)
 - Design Concepts & Situational Awareness
 - PreVision (Visual Pattern Recognition)
 - Two Factor Authentication
 - Playback
- UOC
 - Multi Galaxy (DMZ & Enterprise)
 - Access Anywhere OMI
- Enterprise Level
 - Insight View (Cloud)
 - Alarm Advisor (Decision Support Systems)
 - AI/ML (Behavioral Analysis)



OMI (Plant Level)

Design Concepts & Situational Awareness

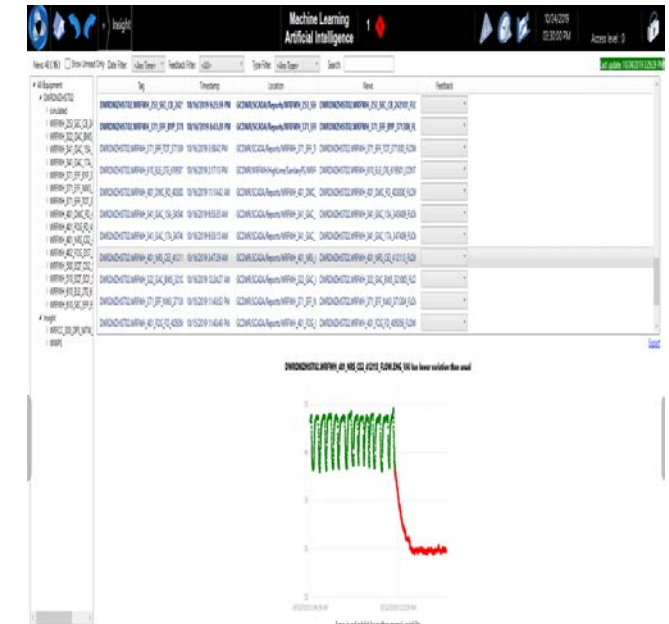
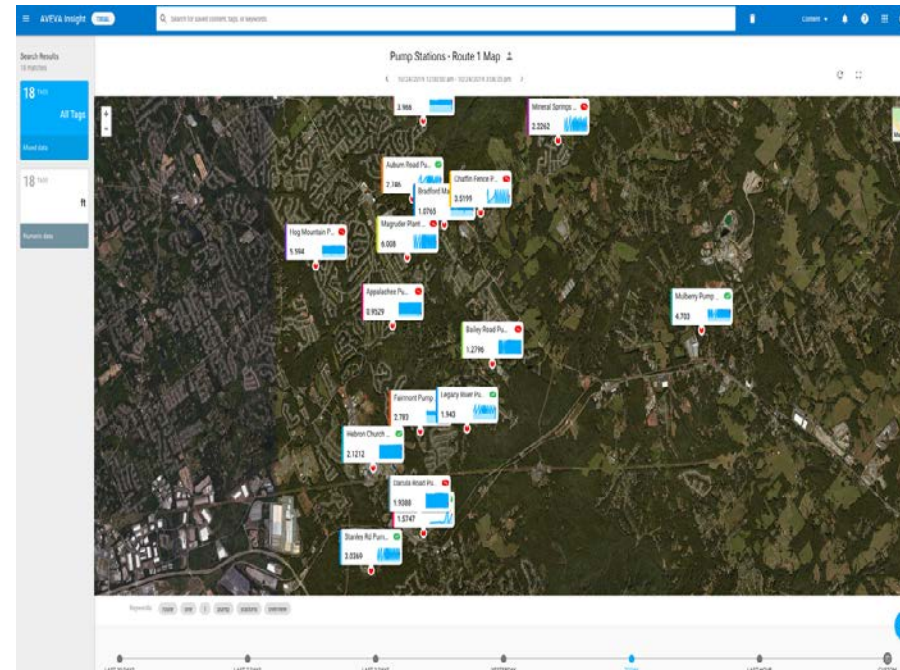
- Adaptability
 - Response Compatibility
 - Digital Twin
 - Dynamic Sizing
- Consistency
 - Symbol Libraries
 - Element Style Libraries
- Explicit and Implicit Messages

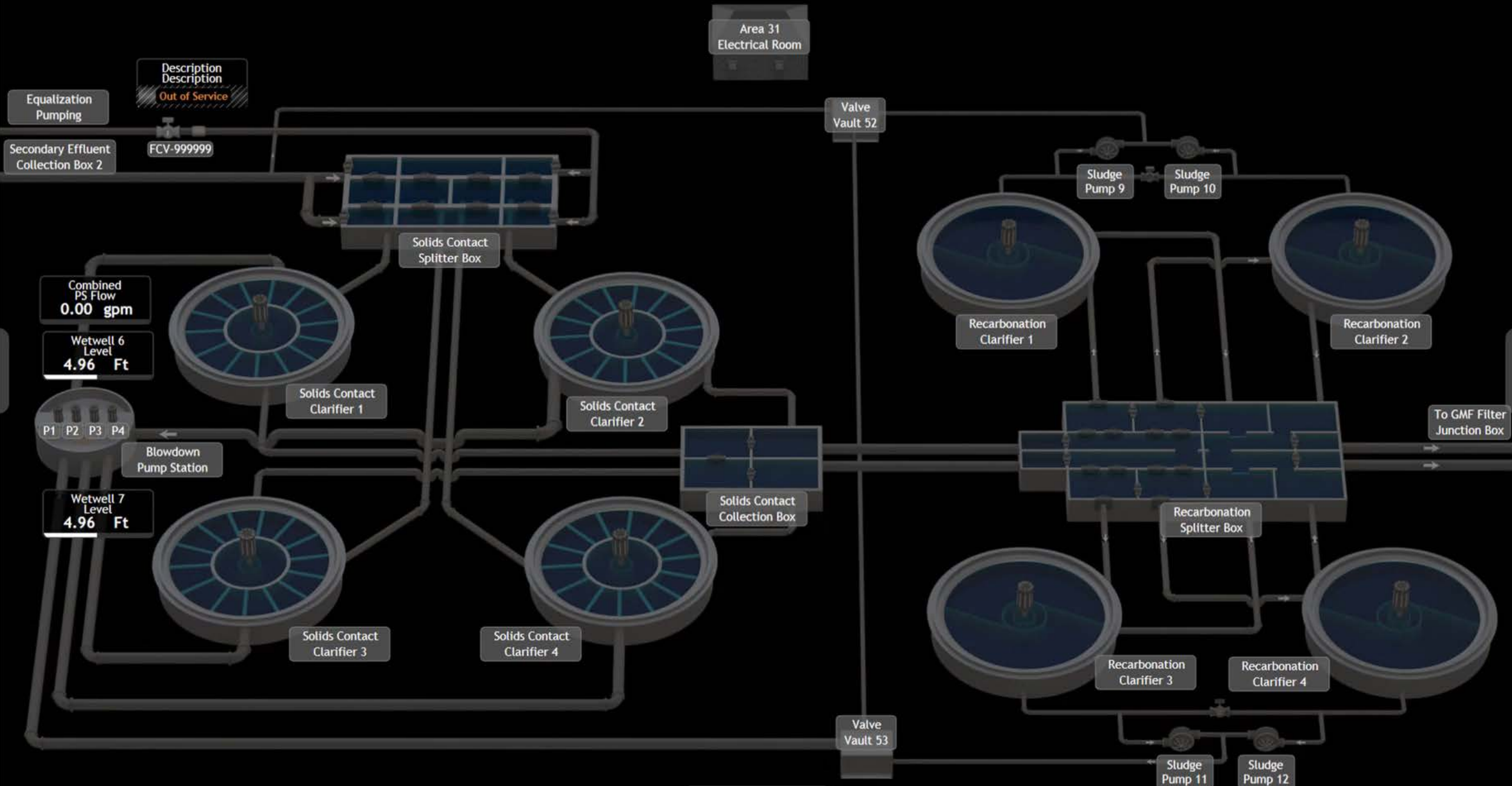


Enterprise Level

Staying ahead of the curve with Insight

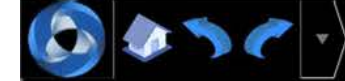
- Elevate knowledge
 - Map View
 - Dashboards
 - Alexa Integration
 - Cloud Integration – AI/ML/Data Sharing







DWRCENGR01



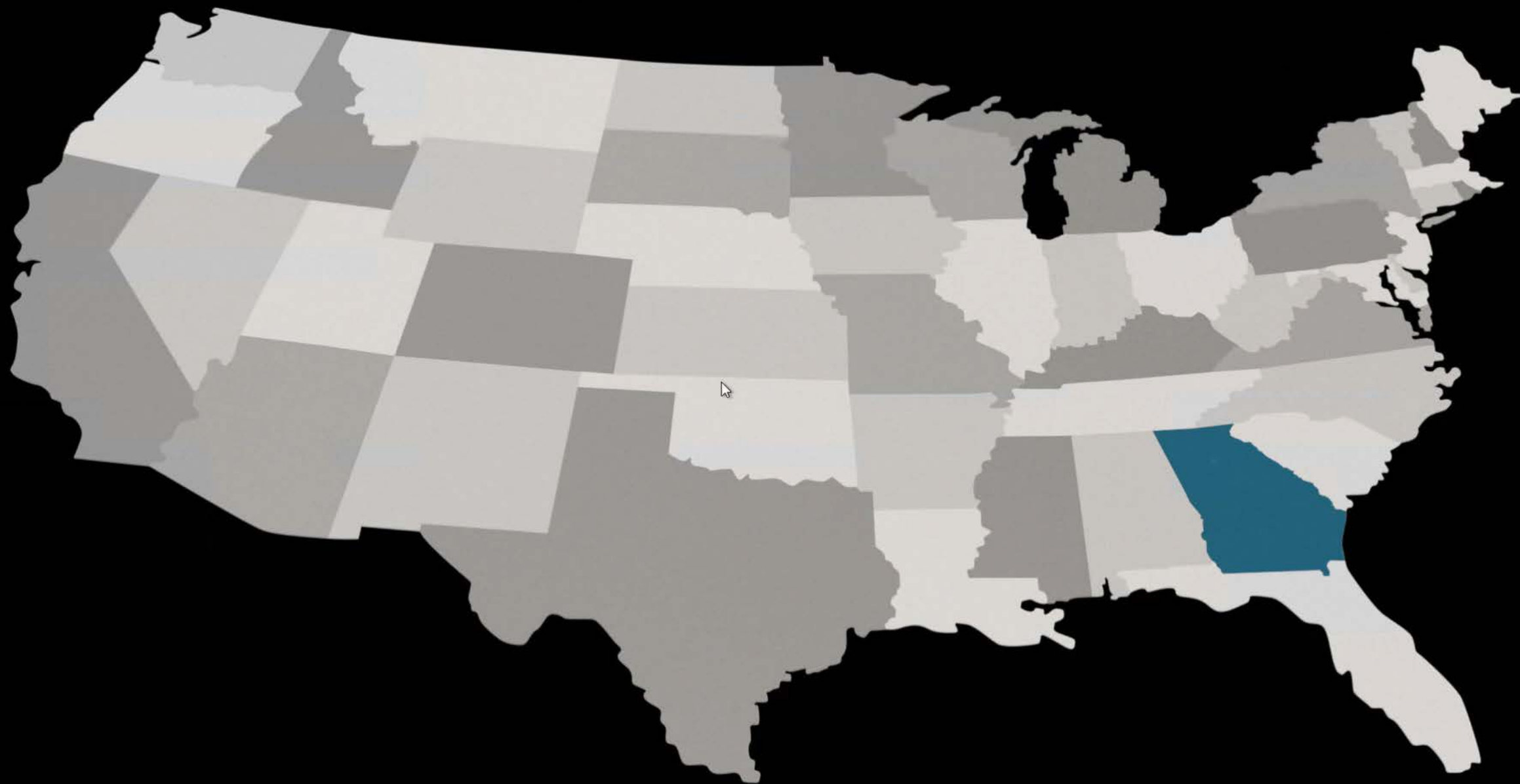
Gwinnett County Overview Map

1



10/30/2019
01:10:46 PM

Access level : 0



Visibility Drives Performance

Key Questions to Achieve Operational Excellence

Real-time Performance Management

How am I doing (right now!) relative to my plan?

Real-time Decision Support

What should I do (right now!) to maximize the capability of our operations?



MR
SYSTEMS

Advanced Systems.
Proven Solutions.

AVEVA[™]

Kohima Smart City

AVEVA's Unified Operations Center helps create blueprint in sustainable smart city innovation


Integrated cross-city command center and technology platform optimizing the management and efficiency of the city's smart services


Deployed remotely to manage traffic, energy consumption using smart street lighting, city pollution monitoring and public address system



This presentation may include predictions, estimates, intentions, beliefs and other statements that are or may be construed as being forward-looking. While these forward-looking statements represent our current judgment on what the future holds, they are subject to risks and uncertainties that could result in actual outcomes differing materially from those projected in these statements. No statement contained herein constitutes a commitment by AVEVA to perform any particular action or to deliver any particular product or product features. Readers are cautioned not to place undue reliance on these forward-looking statements, which reflect our opinions only as of the date of this presentation.

The Company shall not be obliged to disclose any revision to these forward-looking statements to reflect events or circumstances occurring after the date on which they are made or to reflect the occurrence of future events.

 linkedin.com/company/aveva

 [@avevagroup](https://twitter.com/avevagroup)

ABOUT AVEVA

AVEVA is a global leader in industrial software, driving digital transformation and sustainability. By connecting the power of information and artificial intelligence with human insight, AVEVA enables teams to use their data to unlock new value. We call this Performance Intelligence. AVEVA's comprehensive portfolio enables more than 20,000 industrial enterprises to engineer smarter, operate better and drive sustainable efficiency. AVEVA supports customers through a trusted ecosystem that includes 5,500 partners and 5,700 certified developers around the world. The company is headquartered in Cambridge, UK, with over 6,500 employees and 90 offices in over 40 countries.

Learn more at www.aveva.com