



Strong connections Big impact

OCS Discrete Manufacturing

Gerhard Bechter
Christoph Jandl

HENN connector
group

AVEVA



We all know the principle...






...and the
problem

A photograph of a green garden hose lying on a lawn. A blue valve or fitting is attached to the hose, and a small amount of water is spraying out from it. The background is a lush garden with various plants and flowers, slightly out of focus. The word "LEAKAGE" is written in large, white, sans-serif capital letters across the center of the image.

LEAKAGE



125M EUR



AUTOMOTIVE



AUTOMATION



FOOD
&
BEVERAGE



THERMO-
MANAGEMENT



AEROSPACE



BUILDING
INSTALLATION
TECHNOLOGY



586.274.3 ~~586.274.3~~





586.274.5 ~~AVEVA~~




Our
customers
want



NO LEAKAGE

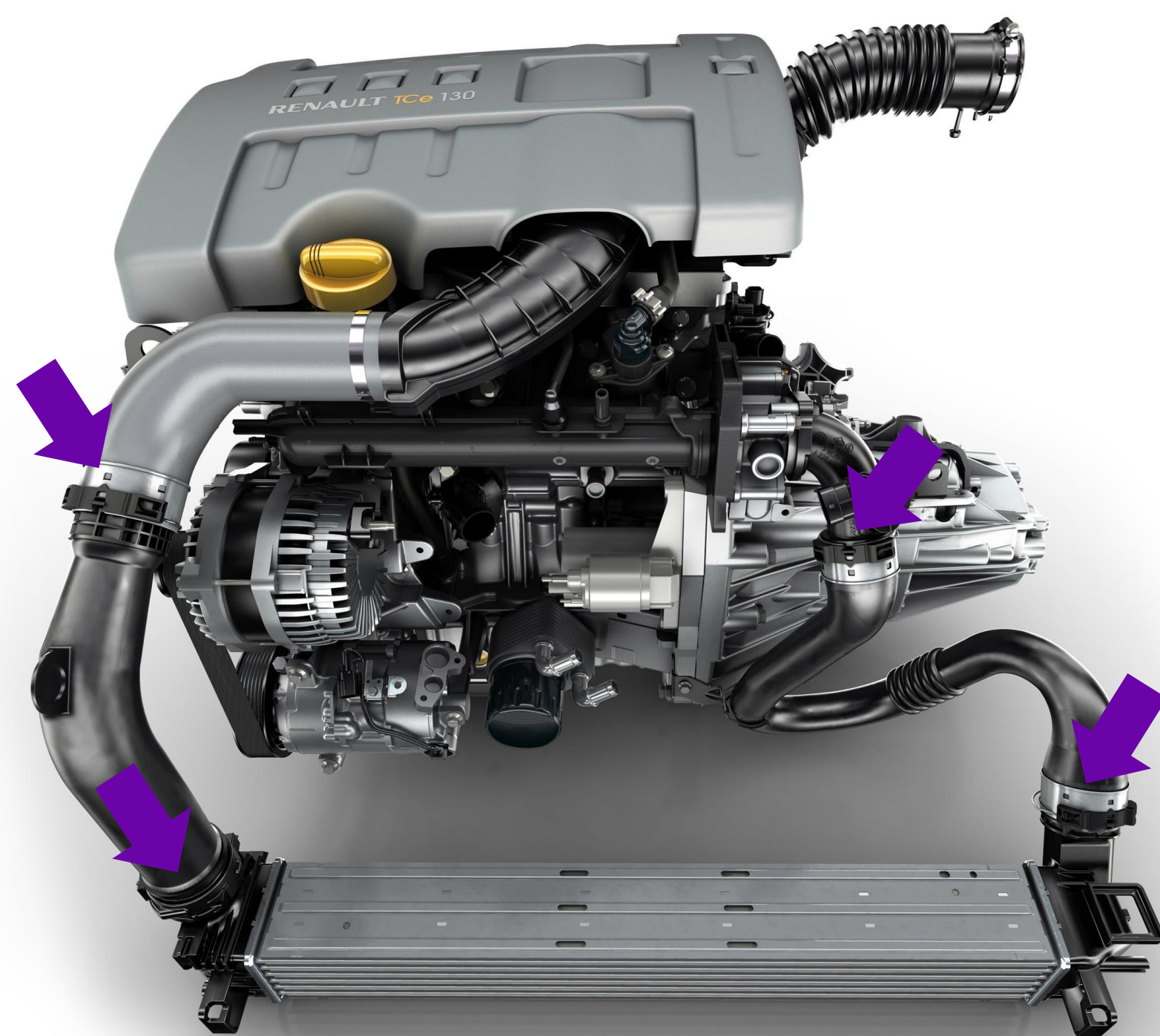


You are using
our products



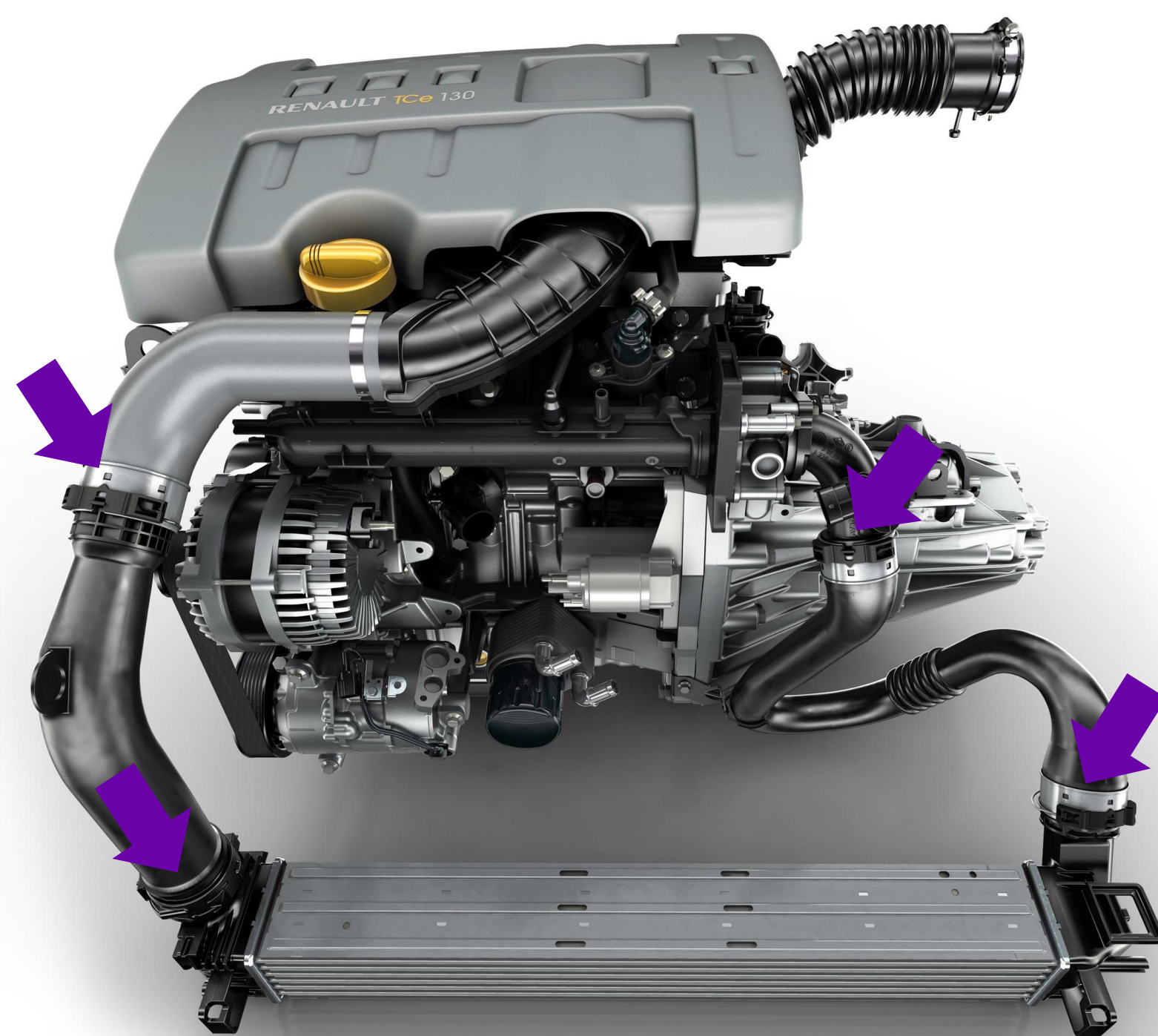
DAILY





..in
your
car

AVEVA



..regardless
if it's a ICE
PHEV
BEV
or FCV

AVEVA



UNLESS
you drive
a HONDA




You might ask
yourself now:

What does
this have
to do
with

PI?



NO LEAKAGE



ALSO FOR DATA

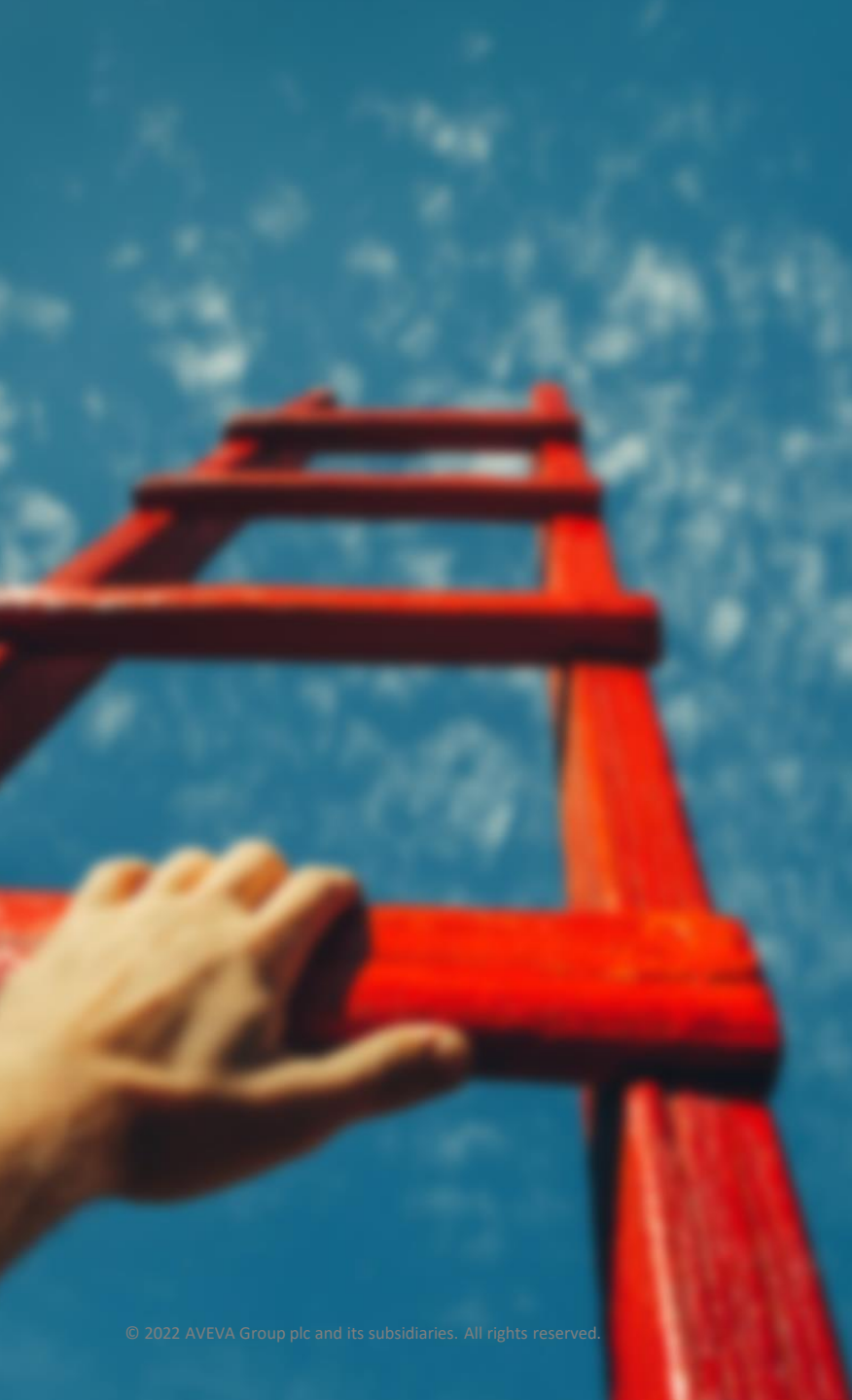
CHALLENGE





SOLUTION





BENEFITS





THE PROBLEM





..18 assembly lines
..420 assembly machines

No connection

No data

No information

No context!

→ **High efforts**





OUR GOAL:



PRO ACTIVE SUPPORT



YESTERDAY



TODAY











[Home](#)[Production Report](#)[Quality Report](#)[Customer Report](#)

Hello, Amsterdam!

Please enter part number

[Home](#)[Production Report](#)[Quality Report](#)[Customer Report](#)

Hello, Amsterdam!

Please enter part number

Cupling production report

This component demonstrates fetching data from the server.

Part number	5735172	Part state	True
Charge number	274533	Part type	HC45.09 FKM
Production date	05.04.2022 08:52:47	Assembly line	HC.air 1502

Measure	Value	Setpoint	Difference
Station 313 Height 1	-3,8953	-3,86	0,035
Station 313 Angle 1	248,148	248,1	-0,04
Station 313 Height 2	-3,895	-3,98	-0,08
Station 313 Angle 2	248,801	248,8	-0,00

[Home](#)[Production Report](#)[+ Quality Report](#)[+ Customer Report](#)

Quality report

Production date

05.04.2022 08:52:47

Part number

5735172

Part state

NO ERROR

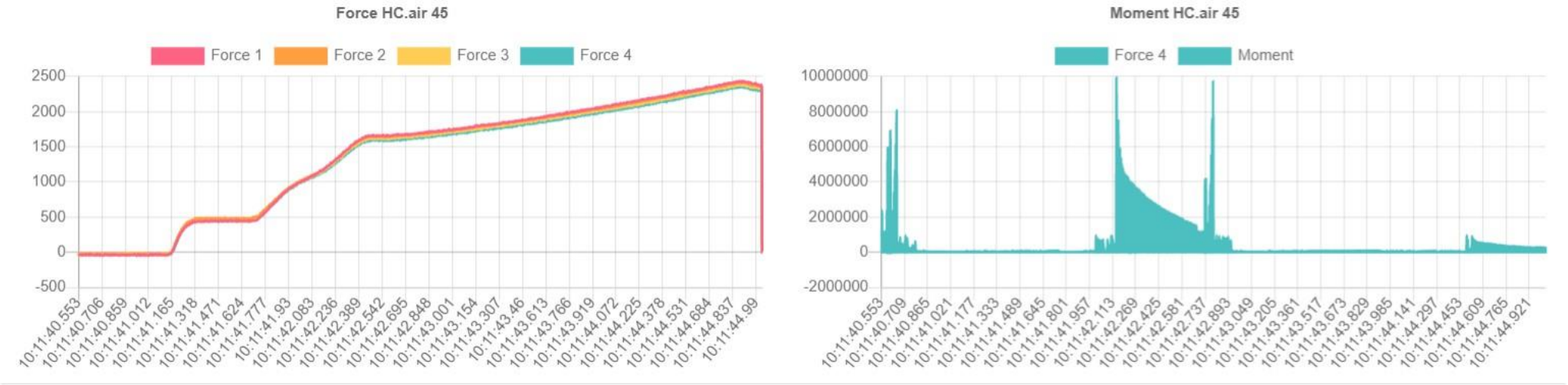


- Home
- Production Report
- Quality Report
- Customer Report

Customer assembly report

Overview of the final assembly of the part on client side

Assembly Time	2022-04-14T10:11:00Z	Workplace	2001	Product	PI World DEMO
Program	*Software Test*	Tool 1	HC+ 45 R1 A	Tool 2	HC+ 45 V04
Barcode Part	9329050905735172	Barcode Tool 1	10700160180	Barcode Tool 2	10700820496
Assembly state	NO ERROR	Batch number	DEMO39593	Program number	7

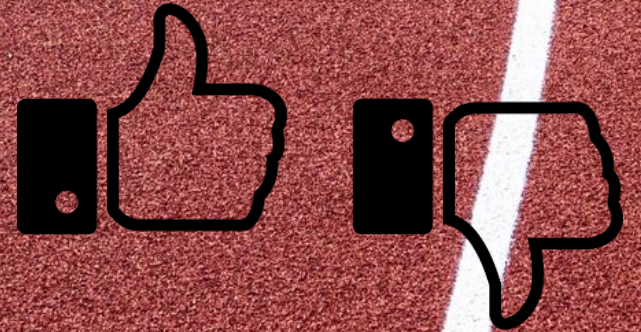
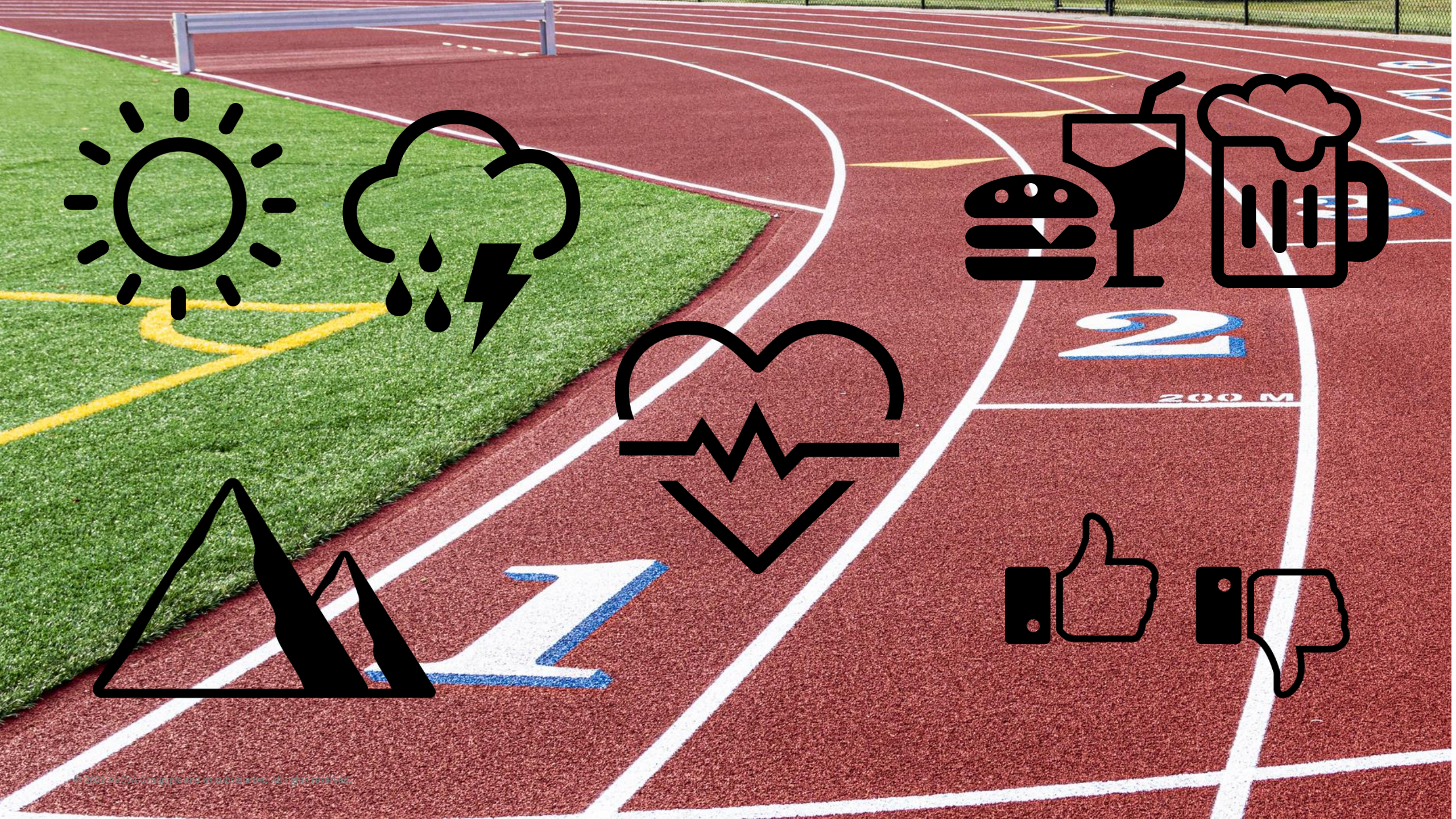


A conceptual image featuring a bright orange rocket launching vertically from the bottom center, leaving a long, intense trail of fire and smoke. Four white, ribbed hot air balloons are positioned horizontally across the middle of the frame, appearing to float in the sky. The background is a dark, deep blue sky filled with soft, white, wispy clouds. Overlaid on this scene is the text 'WHY IS THIS SPECIAL?' in a large, white, sans-serif font, split across two lines.

WHY IS THIS
SPECIAL?

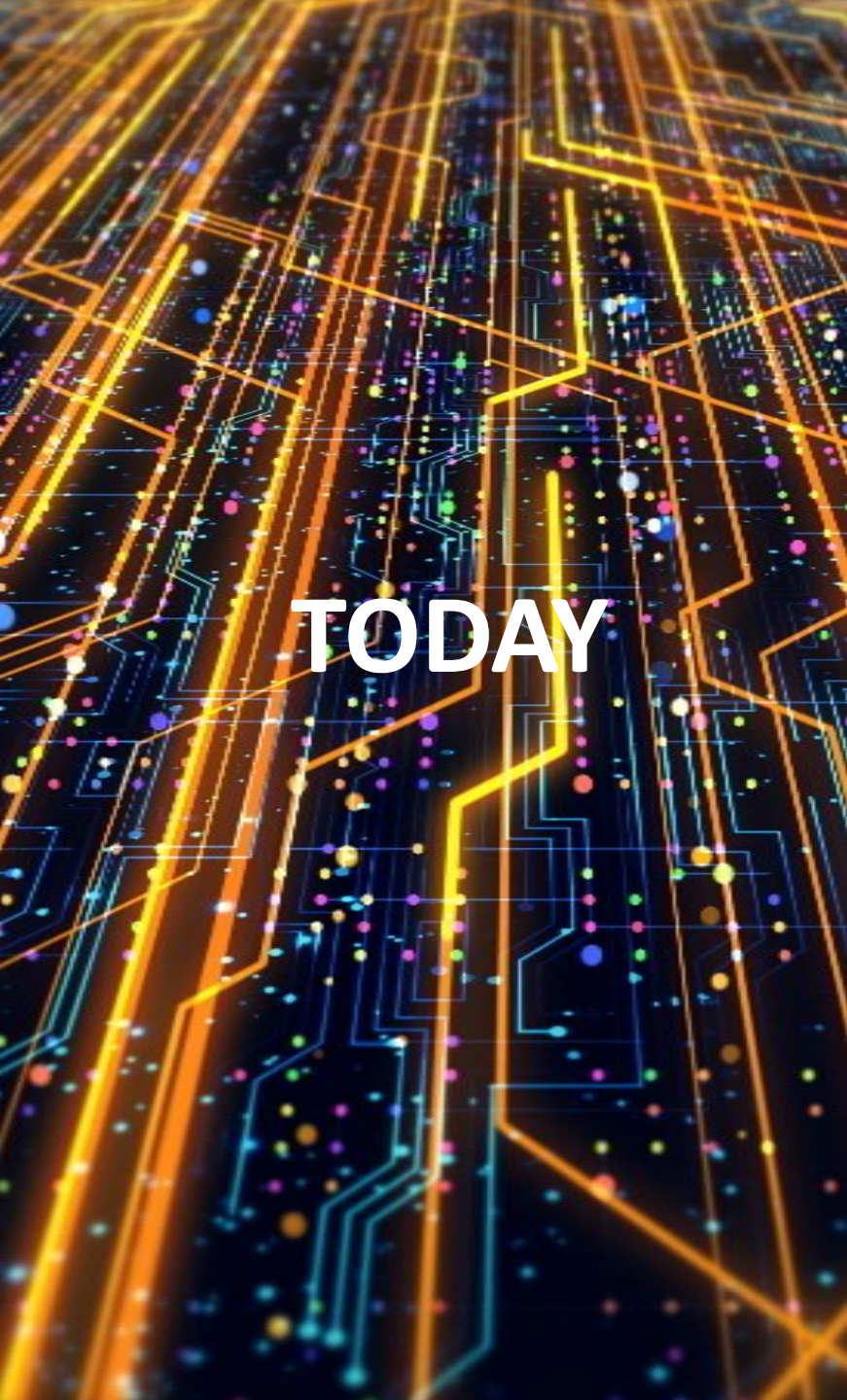


SEQUENTIAL DATA STORAGE

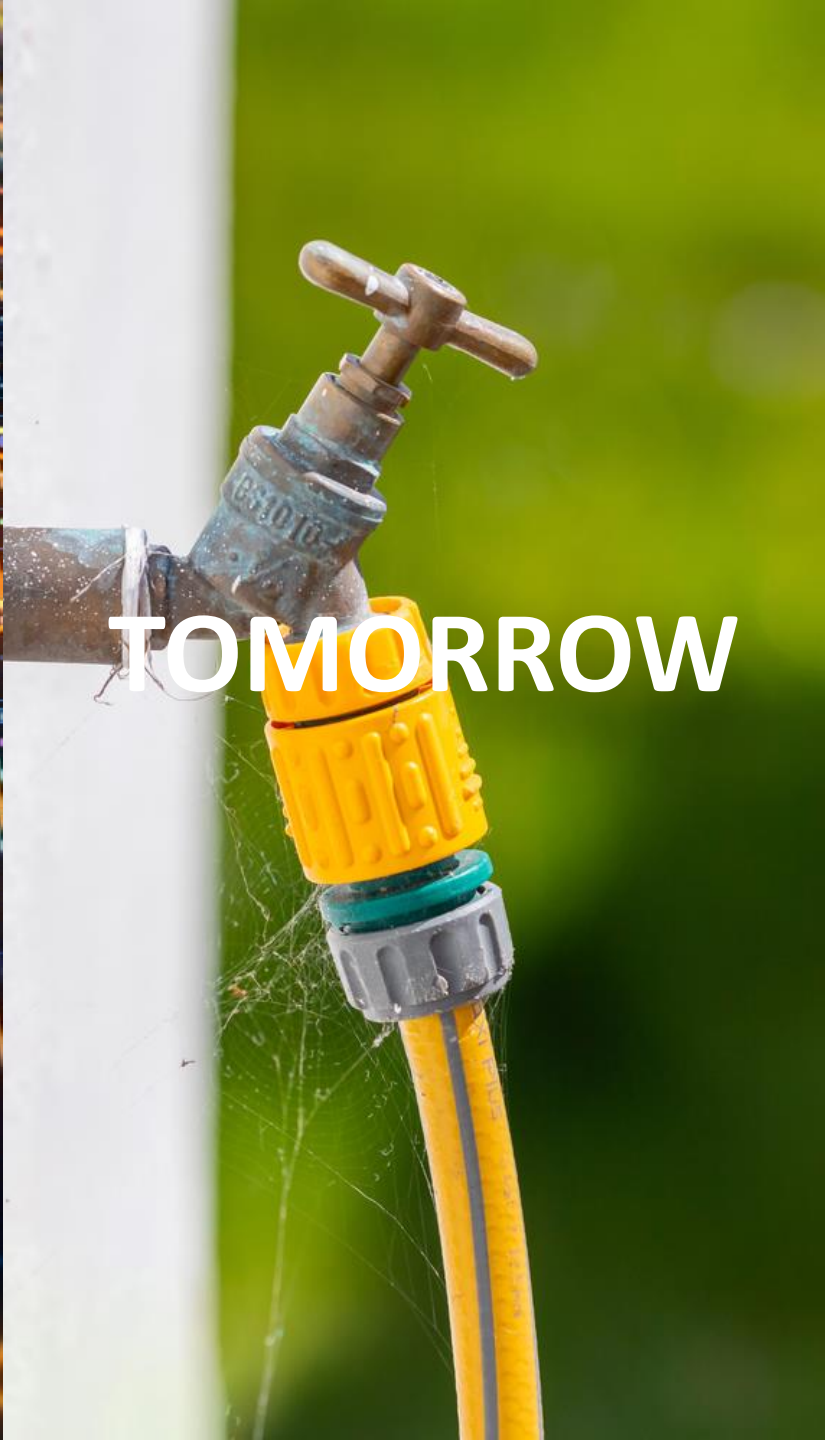




YESTERDAY



TODAY



TOMORROW



NO LEAKAGE



WHO DOES IT HELP?

A photograph of a supermarket aisle with a shopping cart in the foreground. The cart has an orange handle and a metal frame. The shelves are filled with various products, and the background is slightly blurred. The word "PURCHASING" is overlaid in large, white, sans-serif capital letters.

PURCHASING

A smiling woman with long, wavy blonde hair, wearing a bright yellow turtleneck sweater, stands against a solid yellow background. She is holding several yellow shopping bags in both hands, with her arms extended outwards. The word "CUSTOMERS" is written in large, white, sans-serif capital letters across the center of the image, partially overlapping the woman's torso and the shopping bags.

CUSTOMERS



STAKEHOLDER

MANUFACTURER

A man in a dark suit and light-colored shirt is pointing his right index finger directly at the camera. The word "YOU" is written in large, white, sans-serif capital letters across the center of the image, partially overlapping the hand and the man's face. The background is blurred, showing what appears to be an office or modern building interior.

YOU





Christoph Jandl

Vice President Corporate Development


- HENN Connector Group
- christoph.jandl@henn-group.com




Gerhard Bechter

Head of IT

- HENN
- gerhard.bechter@henn.at

 linkedin.com/company/aveva

 [@avevagroup](https://twitter.com/avevagroup)

ABOUT AVEVA

AVEVA is a global leader in industrial software, driving digital transformation and sustainability. By connecting the power of information and artificial intelligence with human insight, AVEVA enables teams to use their data to unlock new value. We call this Performance Intelligence. AVEVA's comprehensive portfolio enables more than 20,000 industrial enterprises to engineer smarter, operate better and drive sustainable efficiency. AVEVA supports customers through a trusted ecosystem that includes 5,500 partners and 5,700 certified developers around the world. The company is headquartered in Cambridge, UK, with over 6,500 employees and 90 offices in over 40 countries.

Learn more at www.aveva.com