

MAY 2022

Empowering Connected Workers with Web Visualization

Rickard Norin, Product Manager

AVEVA

Bring a smarter
future into
focus with the
Confidence to Operate
from edge to
enterprise



Collaboration



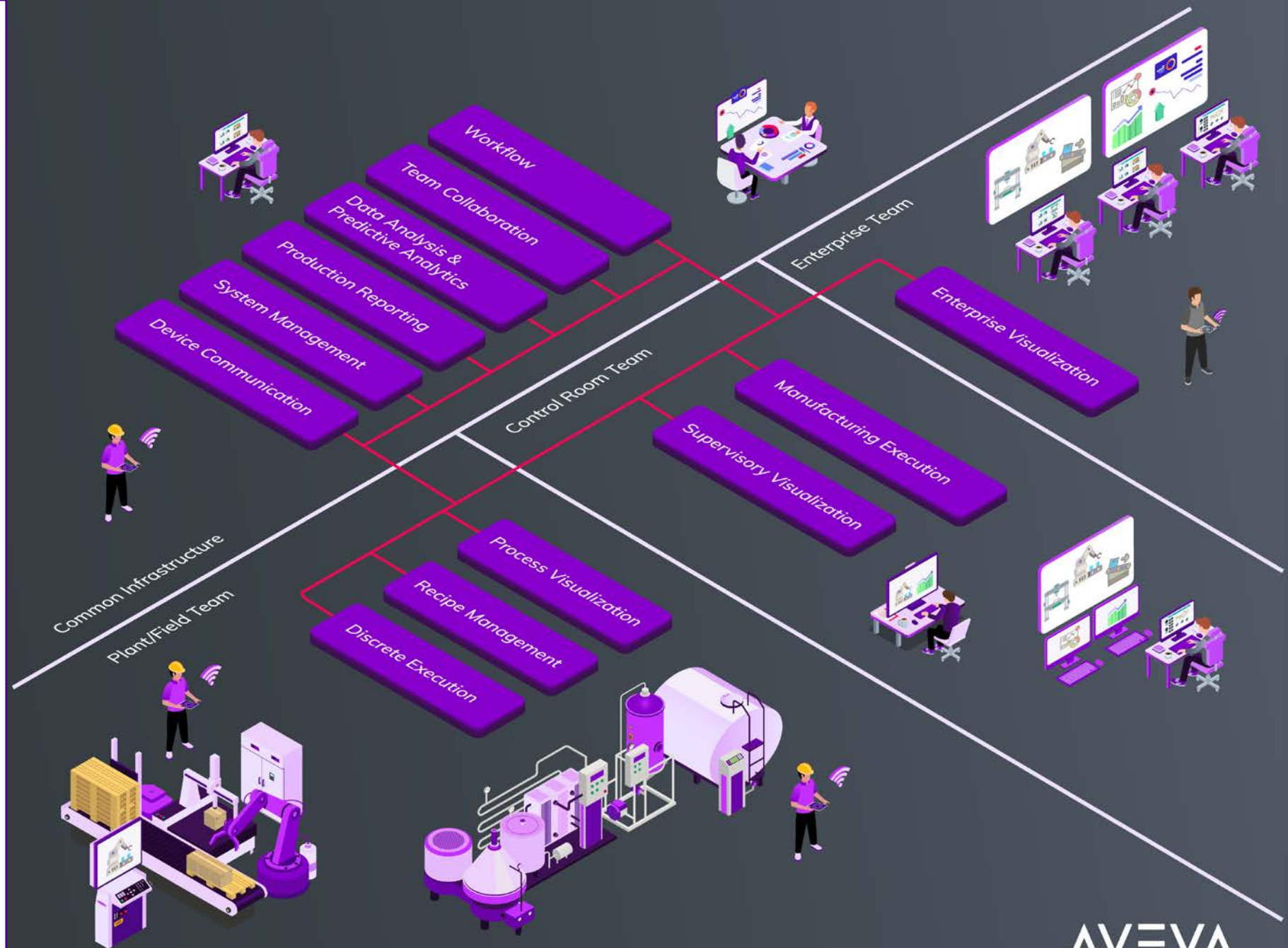
Line-of-Sight Visibility



Remote Work



Standardization



AVEVA

AVEVA Operations Control

At A Glance:

Connected Worker empowers people at the industrial edge by bringing together disparate systems into a common context; systems with information and control capability relevant to decisions made and actions taken in the fulfilment of assigned roles and associated work tasks, be those individual tasks or collaborative tasks for teams.



The Connected Operator Advantage



Foster teamwork and collaboration



Drive empowerment and engagement



Find and realize areas of improvement



Focus on value-adding activities



Replace inaccurate & decentralized paper records



Hide systems complexity



Reduce waste of time

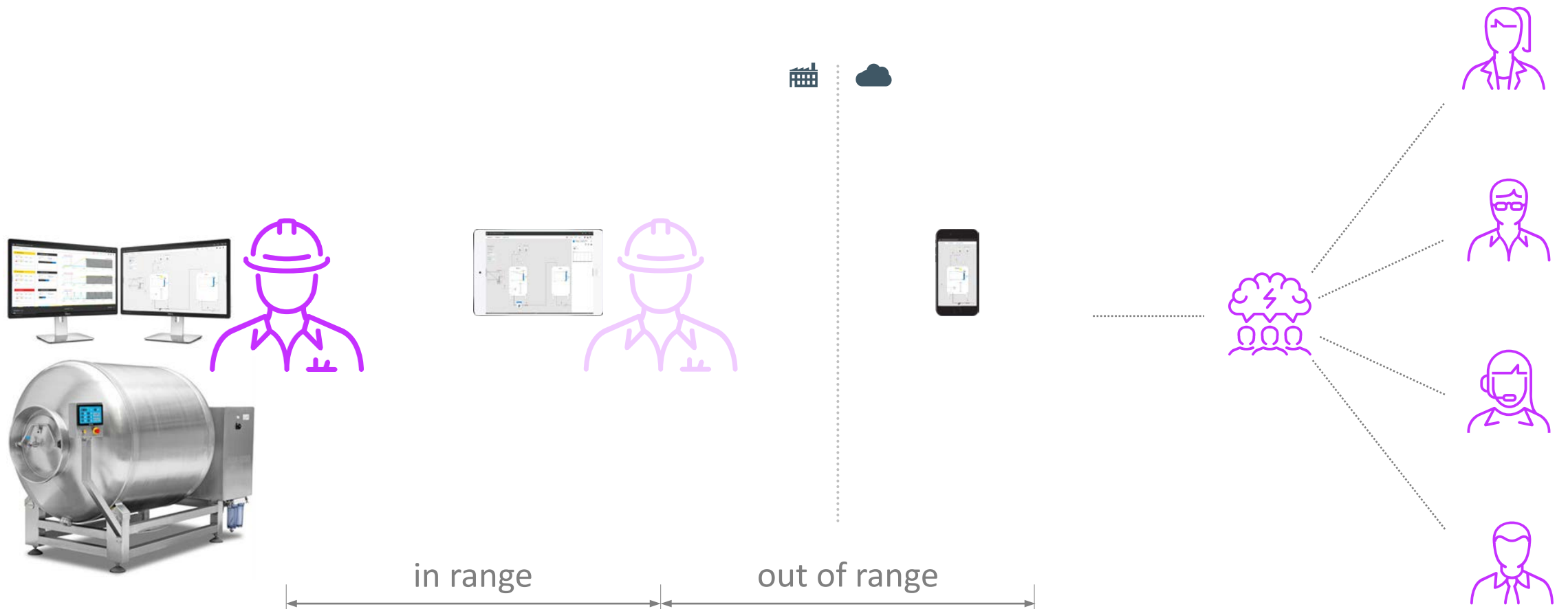


Low risk & uncertainty in budget & delivery

Traditional operations presence



Expanded presence



Expanded presence



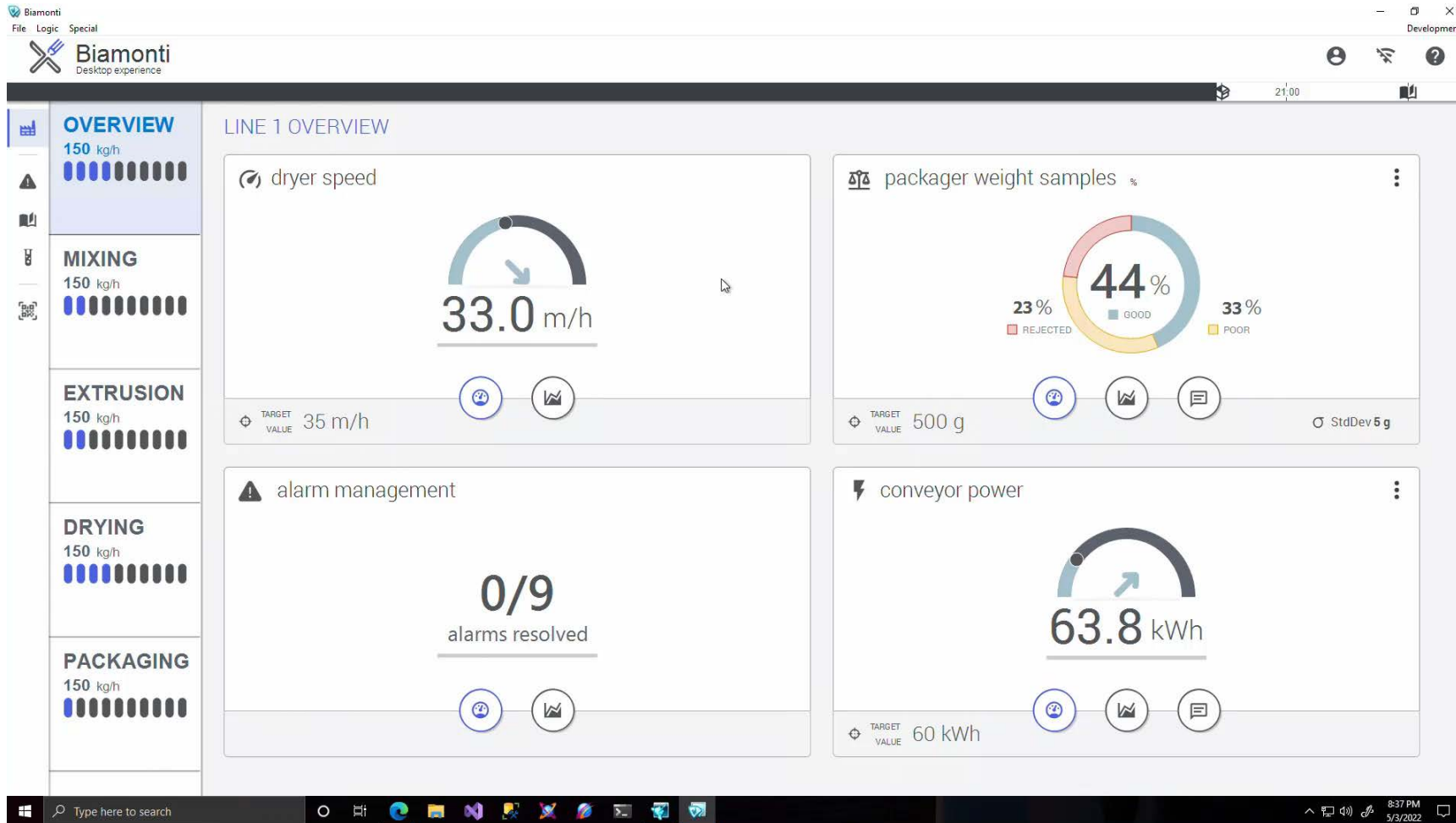
On-premises systems

AVEVA Connect

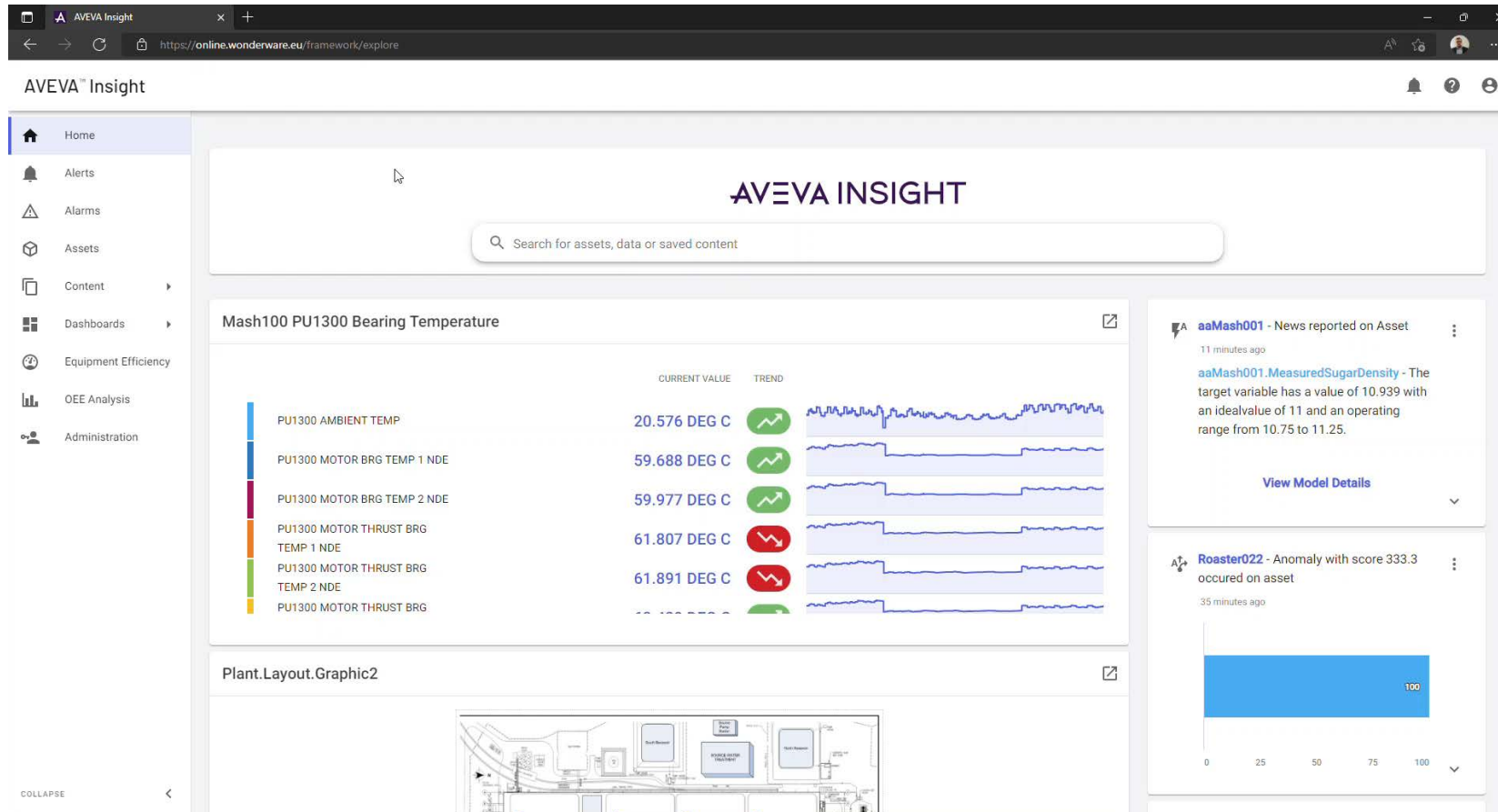
Unified process visualization

Unified data landscape

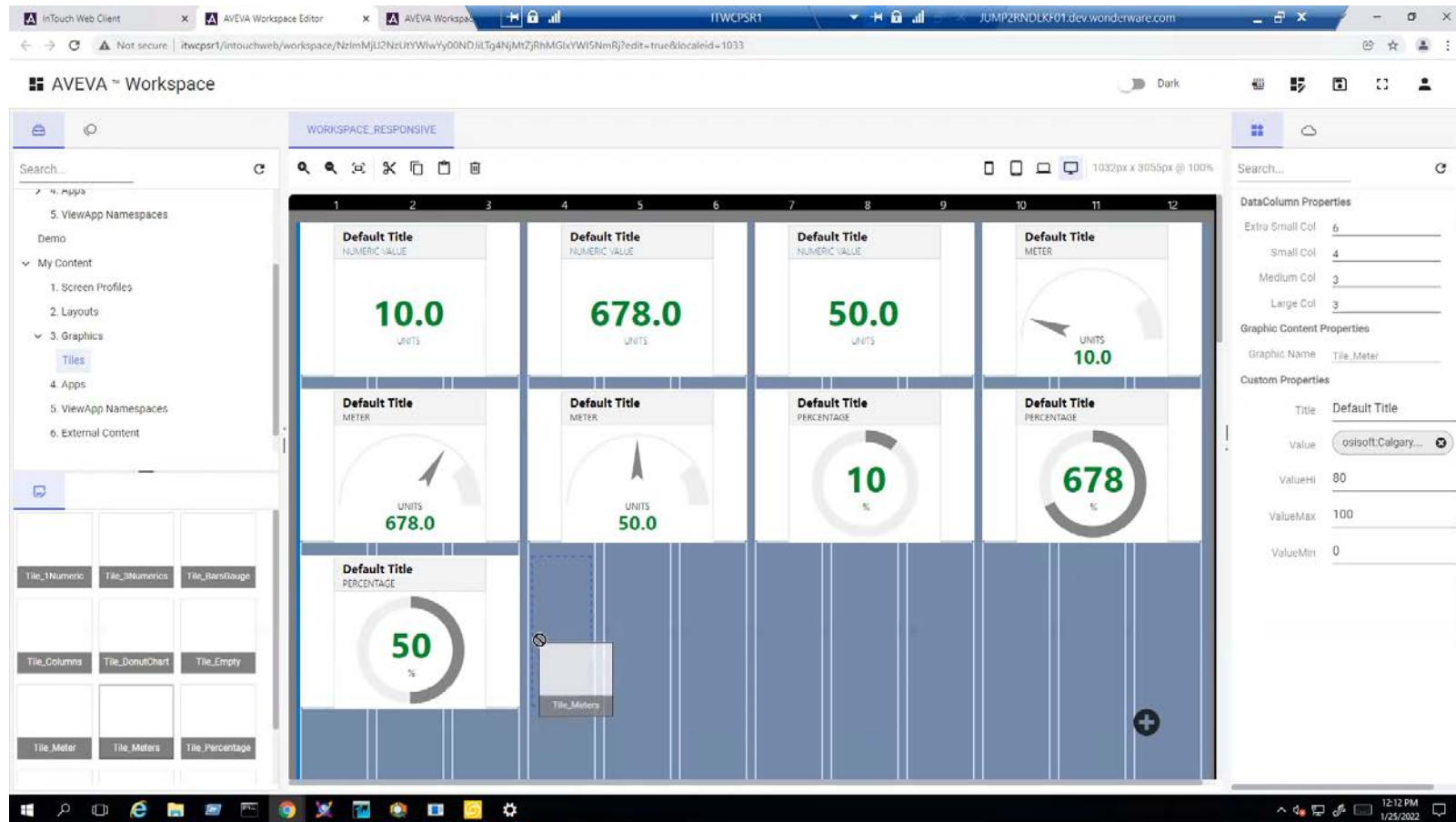
From desktop to browser



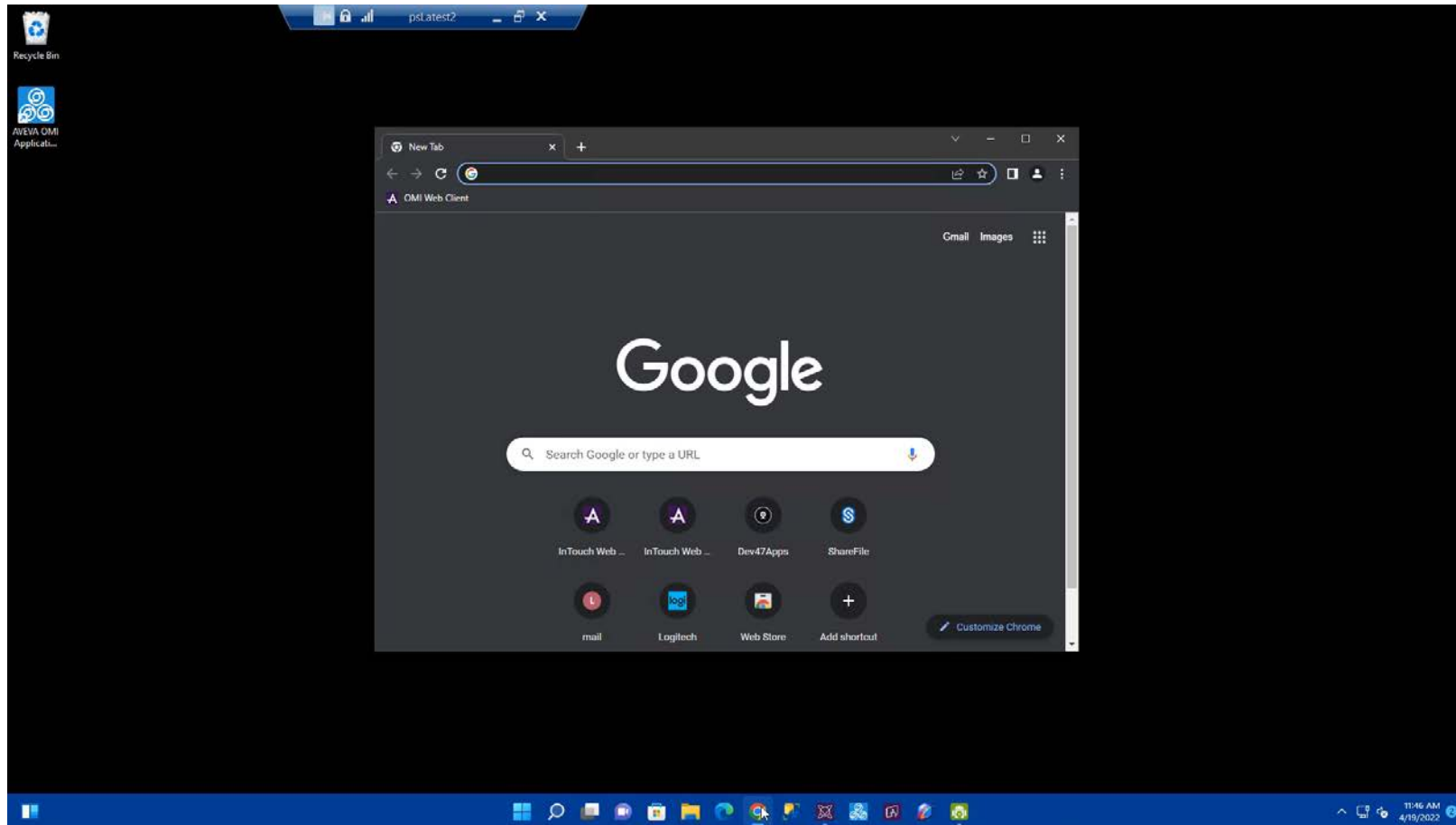
In the cloud



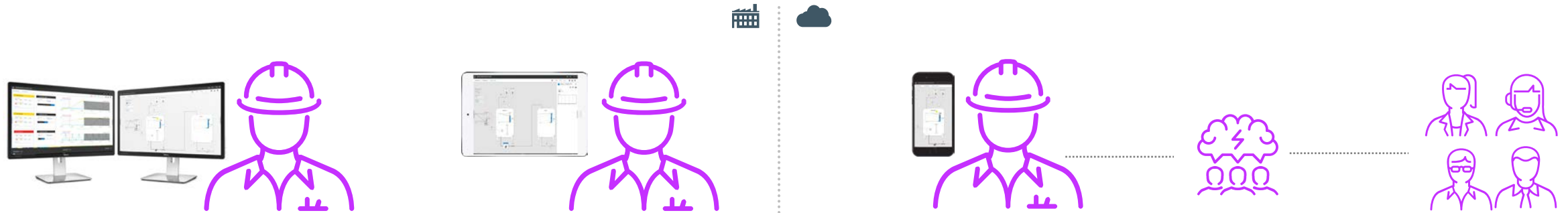
Workspaces



Enterprise Visualization



Expanded presence



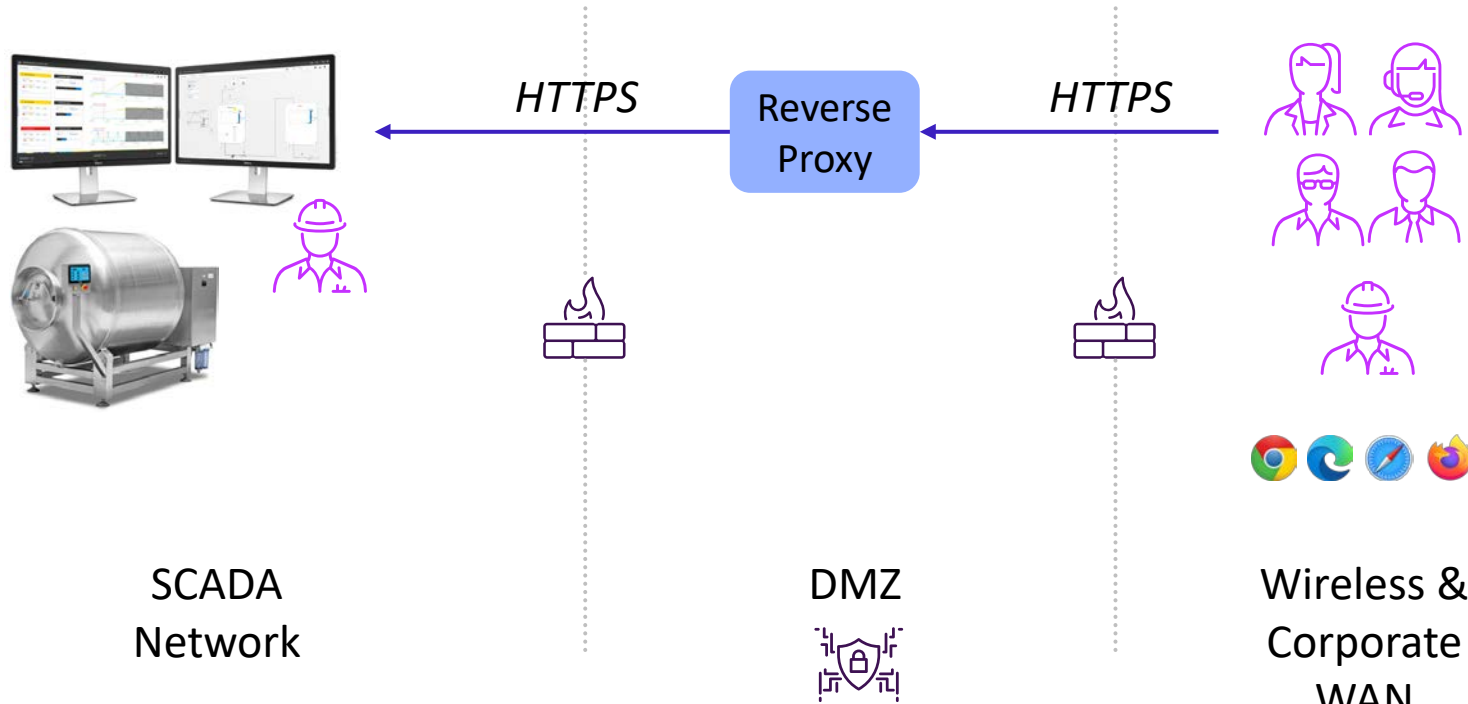
On-premises systems

AVEVA Connect

Unified process visualization

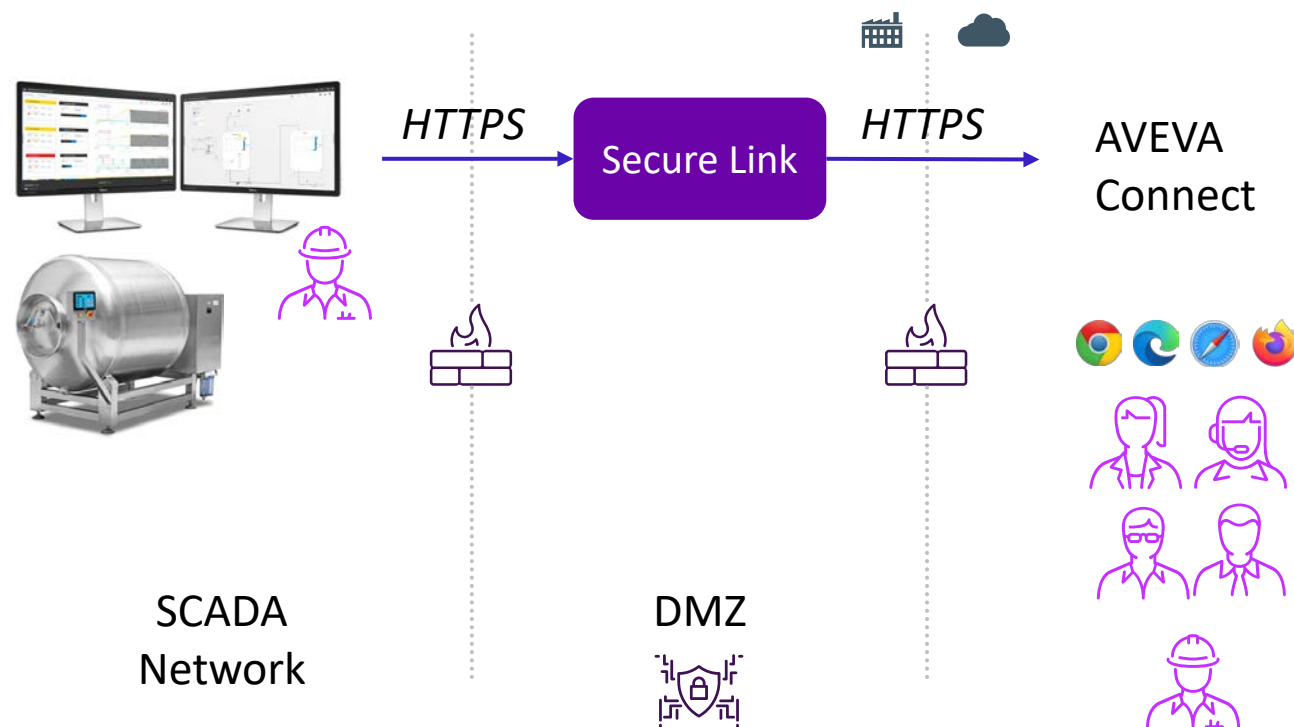
Unified data landscape

Secure access in corporate networks



- Aligned with good practices for cyber security
- Defense in depth, by segmented network architecture
- Indirect and restricted access through reverse proxy
- TLS encryption

Secure access *anywhere*



- Access without compromising secured networks
 - Outbound only, no inbound access
 - No process control
- Aligned with good practices for cyber security
 - Defense in depth, by segmented network architecture
 - Secure Link is digitally signed to only allow traffic to Connect services
 - TLS encryption

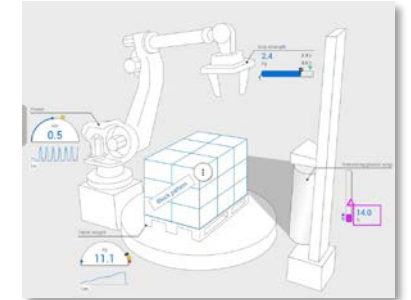
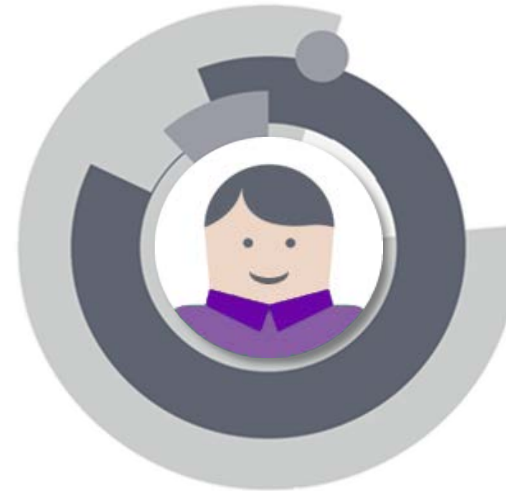
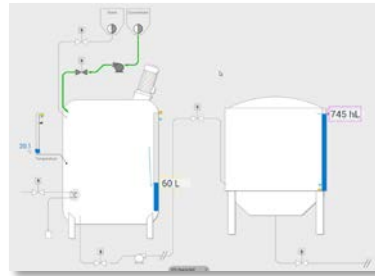
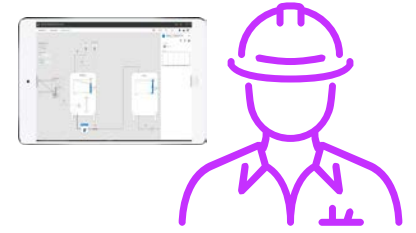
Customer case: Connected Operator

- Goals

- Integrate multiple operational tools in a single user interface, for a role- and task-oriented experience
- Support personnel on and off the plant floor, using tablet form factor devices
- Approximately 300 users per site, multiple sites

- Solution

- Enterprise Visualization, with Industrial Graphics for process visualization and Web Widgets to integrate Power BI, Planner, MES, etc.



Customer case: Global expert community

- Goals

- Provide remote diagnostics and calibration of assets at plants across multiple continents
- Reduce costs and lead time from travel
- Promote knowledge sharing

- Solution

- AVEVA Historian to capture sensor data
- Web application for remote access



AVEVA Operations Control

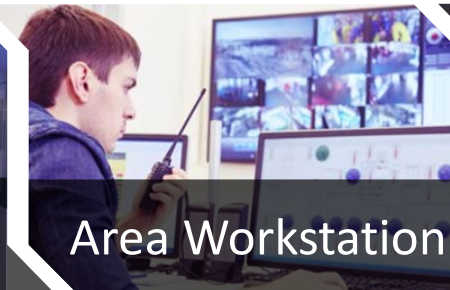
Enterprise Edition

Long Term Focus
Enterprise View
IT/OT Convergence



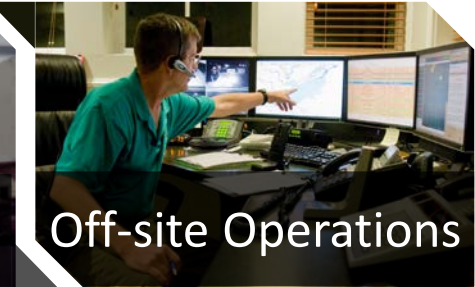
Supervisory Edition

Medium Term Focus
Process View
OT Convergence



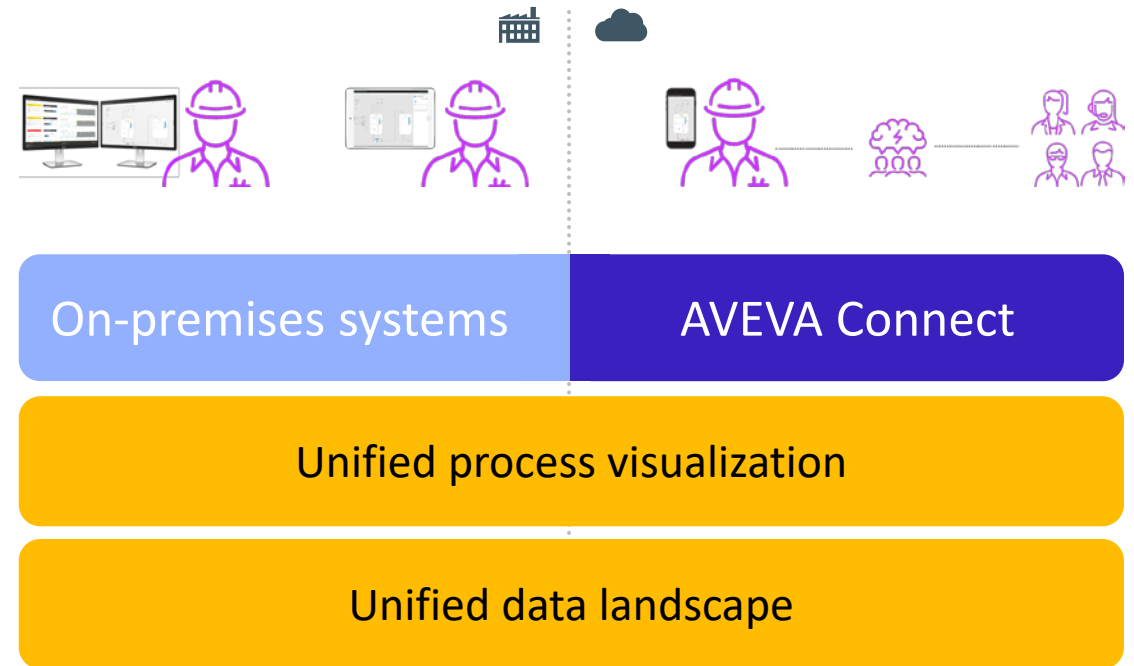
Edge Edition

Short Term Focus
Work Cell View
Control Convergence



Summary


- Access to the same information, **consistently visualized**, wherever your workday takes you
- Unified access to information, contextually **relevant to your role** and responsibilities
- Unification and consistency **drives collaboration**, establishment of global expert communities and crowdsourced assistance and knowledge bases.




[illegible]

This presentation may include predictions, estimates, intentions, beliefs and other statements that are or may be construed as being forward-looking. While these forward-looking statements represent our current judgment on what the future holds, they are subject to risks and uncertainties that could result in actual outcomes differing materially from those projected in these statements. No statement contained herein constitutes a commitment by AVEVA to perform any particular action or to deliver any particular product or product features. Readers are cautioned not to place undue reliance on these forward-looking statements, which reflect our opinions only as of the date of this presentation.

The Company shall not be obliged to disclose any revision to these forward-looking statements to reflect events or circumstances occurring after the date on which they are made or to reflect the occurrence of future events.

 [linkedin.com/company/aveva](https://www.linkedin.com/company/aveva)

 [@avevagroup](https://twitter.com/avevagroup)

ABOUT AVEVA

AVEVA is a global leader in industrial software, driving digital transformation and sustainability. By connecting the power of information and artificial intelligence with human insight, AVEVA enables teams to use their data to unlock new value. We call this Performance Intelligence. AVEVA's comprehensive portfolio enables more than 20,000 industrial enterprises to engineer smarter, operate better and drive sustainable efficiency. AVEVA supports customers through a trusted ecosystem that includes 5,500 partners and 5,700 certified developers around the world. The company is headquartered in Cambridge, UK, with over 6,500 employees and 90 offices in over 40 countries.

Learn more at www.aveva.com