



# EVANS - The Critical Link Between Software and Effective Control Room Operators

Sean Way, Key Account Manager, Evans

# About Evans

# Evans Mission

---

Is to design and equip mission critical operations



NASA – Shuttle Launch Control Room (Firing Room #4) - Kennedy Space Center, FL

# Evans Introduction

---

- Evans focus is on the Control Room to create an environment for flawless collaboration between the Control Room operators and the software, systems and people with which they interact
- Evans completes approximately 20-25 Control Room projects, plus 35-40 additions to existing Control Rooms - every month
- Supporting an installed base, created in the last 40 years, of over 13,000 installations worldwide
- Over \$80M annual sales volume and 400 plus employees worldwide
- Ability to provide one console, or complete Control Room fit outs
- Every project & service is uniquely designed and built to customer requirements
- Certified AVEVA Partner

# Global Customer Support

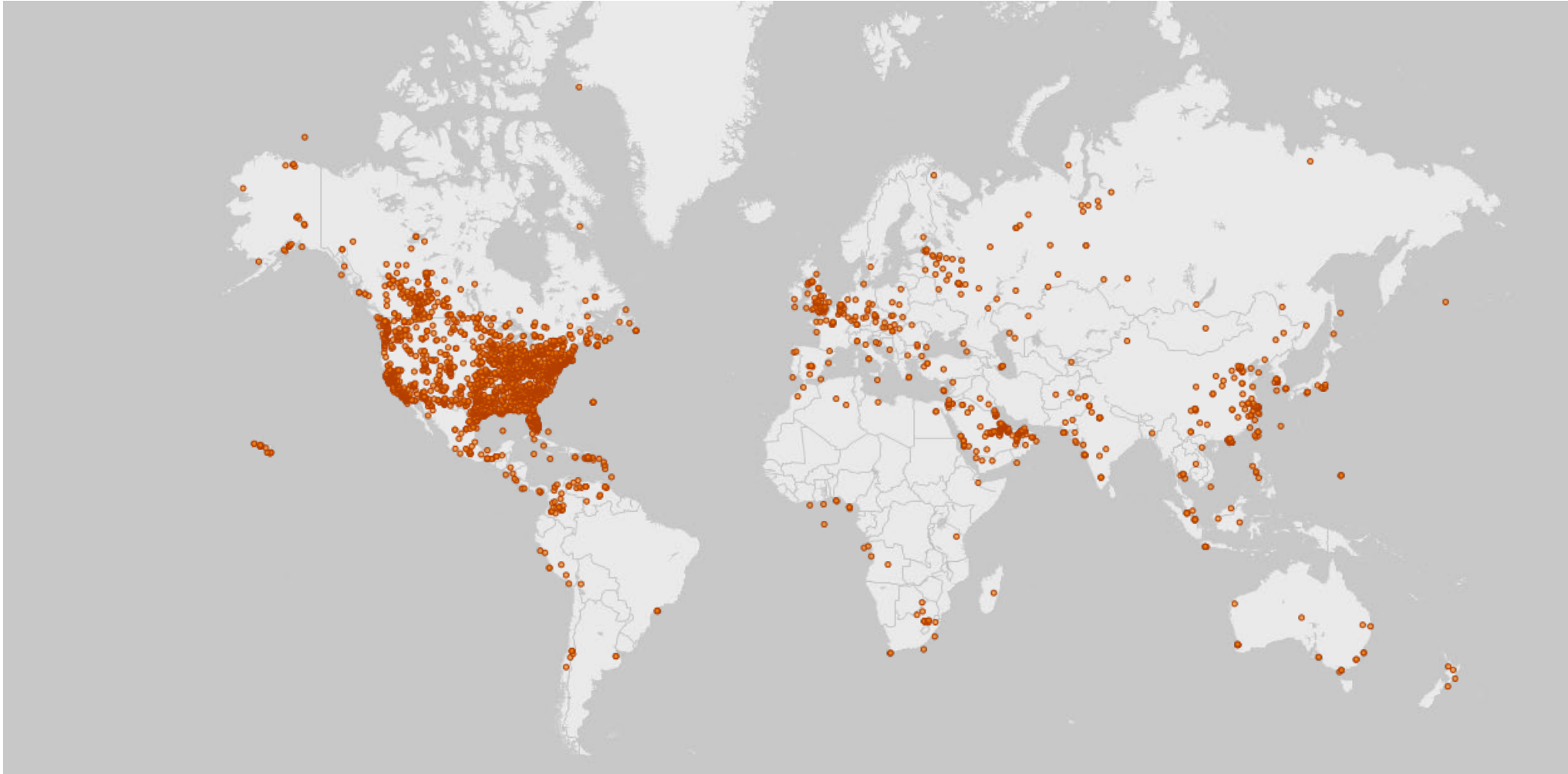
11 facilities, 25 sales manager, 30 certified dealers & installers worldwide



# A Global Perspective; Evans Installations Worldwide

---

Over 13,000 around the world



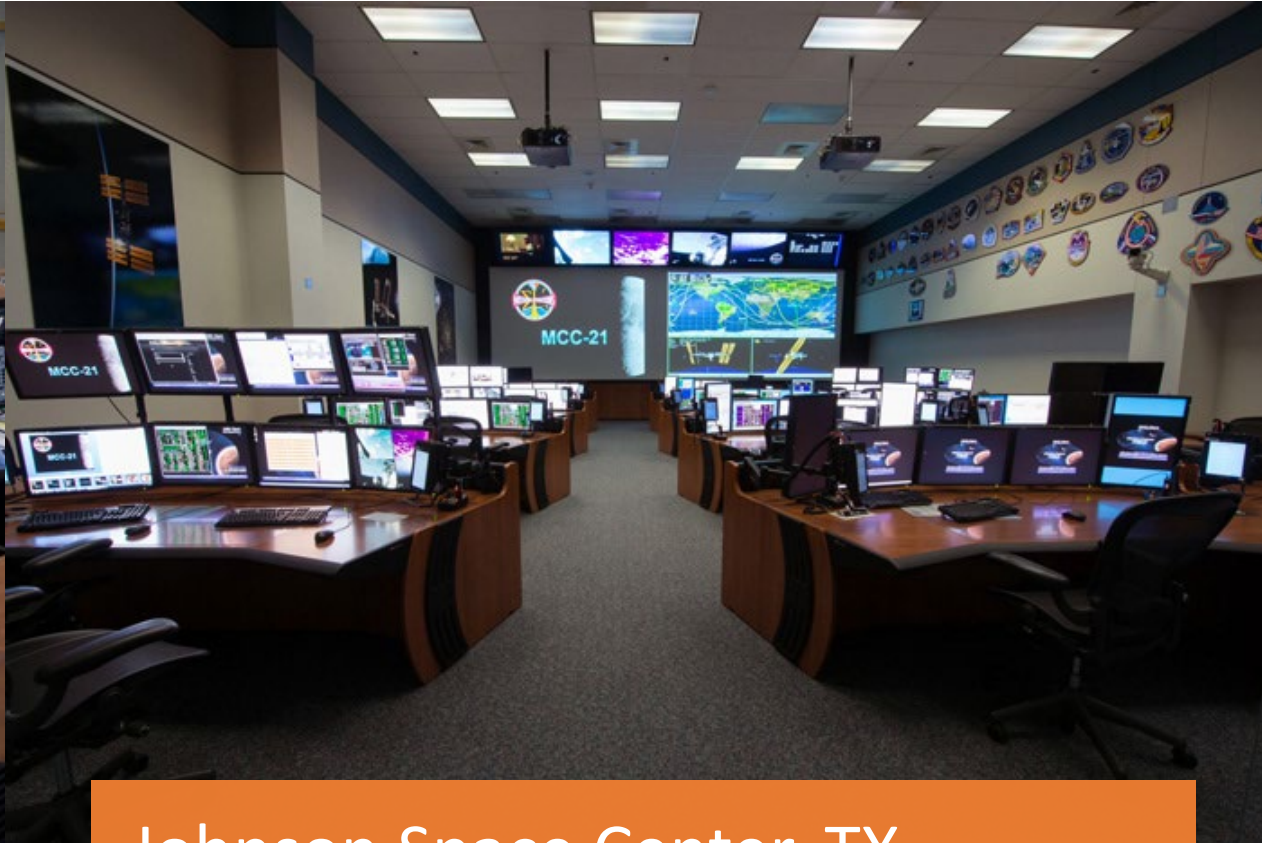
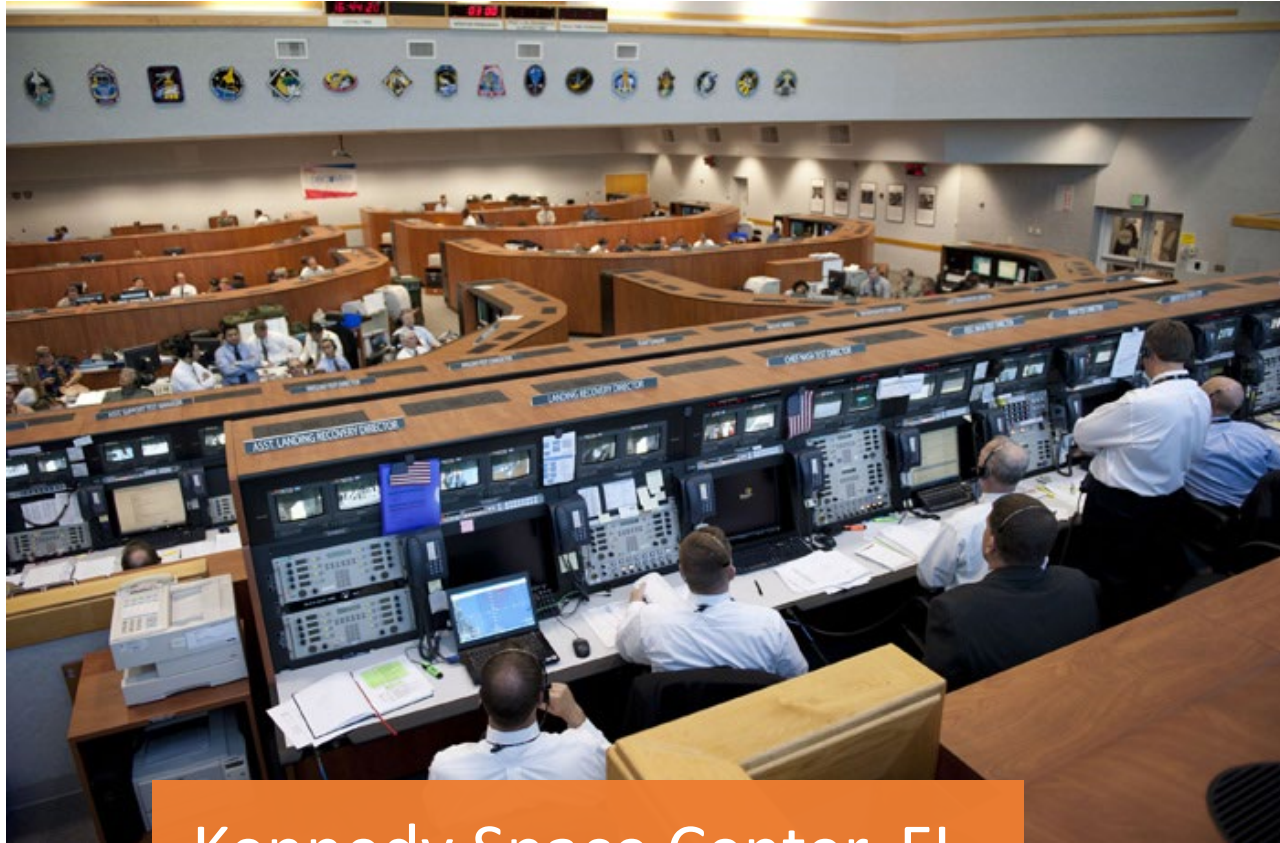
# Diverse Market Experience

EVANS works across multiple vertical markets

Utilities	Process Control	Government	Public Safety	Technology	Airports
					
POWER GENERATION	OIL, GAS & ENERGY	MILITARY	911 EMERGENCY	FINANCE	AIR TRAFFIC CONTROL
TRANSMISSION & DISTRIBUTION	CHEMICALS	CYBER SECURITY	TRAFFIC CONTROL	SECURITY	AIRPORT OPERATIONS
WASTE WATER	PULP PAPER & FOREST	INTELLIGENCE	TRANSPORTATION	MEDICAL	TERMINAL OPERATIONS
	MINING & METALS				
	LIFE SCIENCES				
	MANUFACTURING				

# Control Room Applications

Aerospace



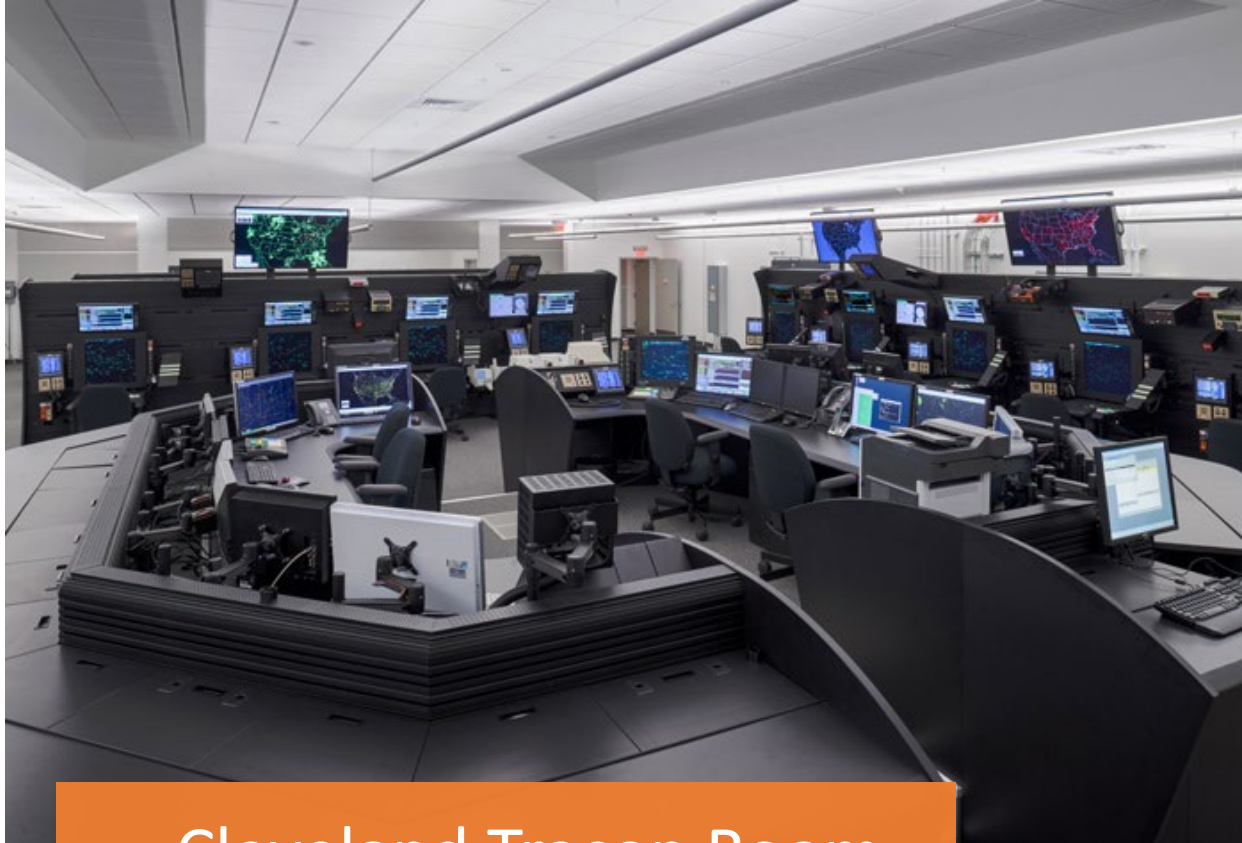
Kennedy Space Center, FL

Johnson Space Center, TX



# Control Room Applications

Federal Aviation Administration



Cleveland Tracon Room



Chicago Tower

# Control Room Applications

## Energy & Utilities



CENAGAS



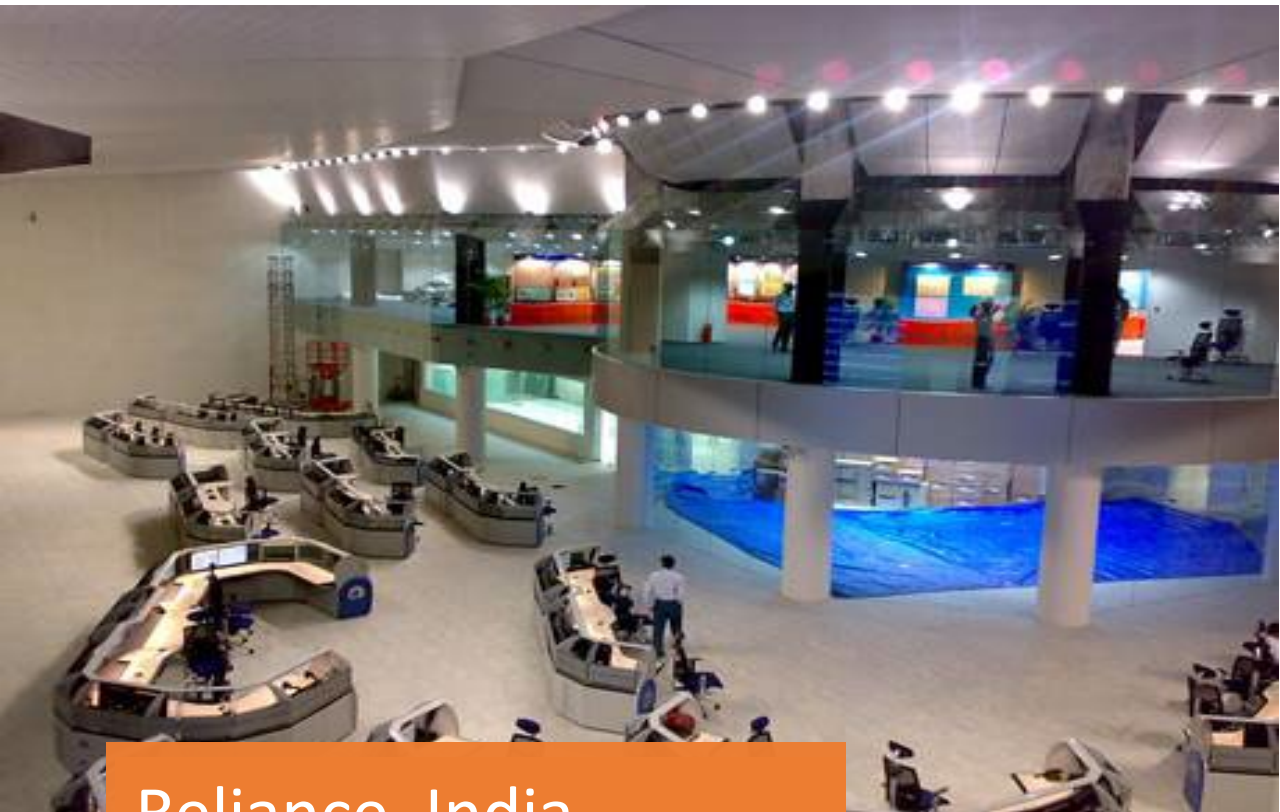
FPL Drone Command

# Control Room Applications

International



Airtel, India



Reliance, India

# Control Room Applications

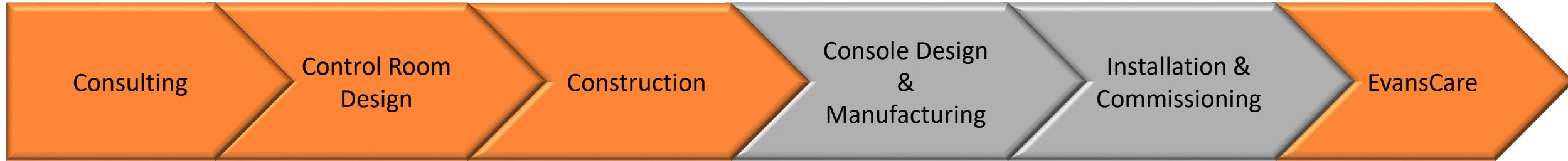
Universal Pictures – turned to EVANS to create a control room of the future



If You Can Dream It, Evans Can Make It

# Control Room Offerings Overview

Evans' products and services allow us to support our partners and customers in every stage of the Control Room project lifecycle



# Evans Console Offerings

# Complete In-house Manufacturing

Assures control of all processes and on-time delivery

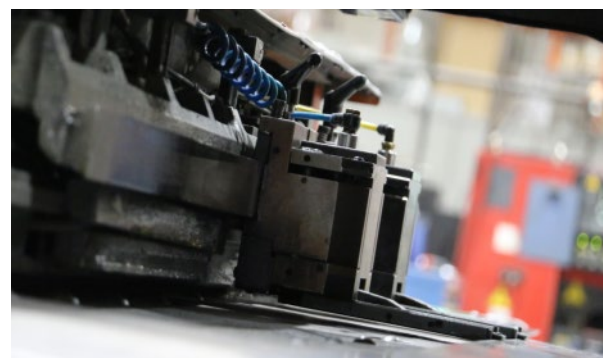
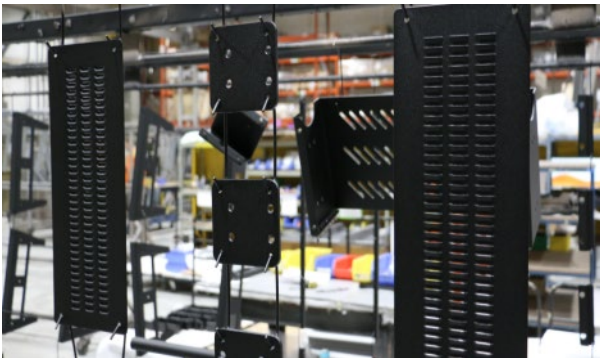
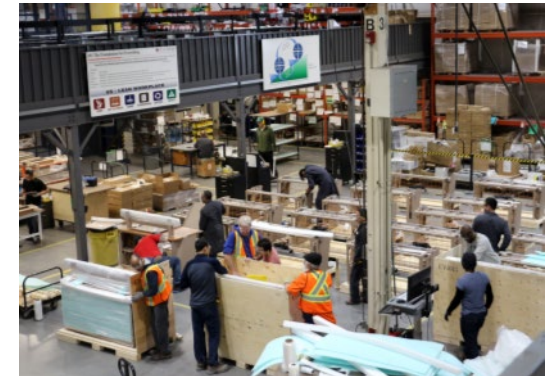
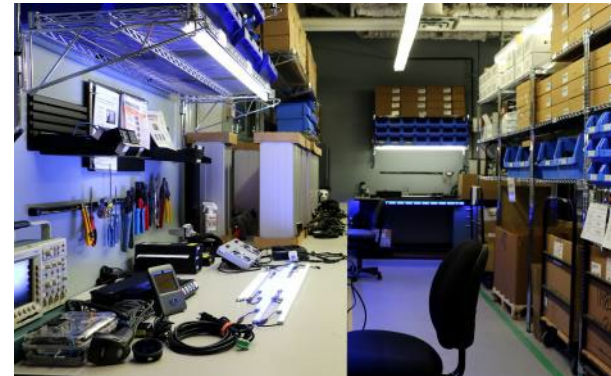
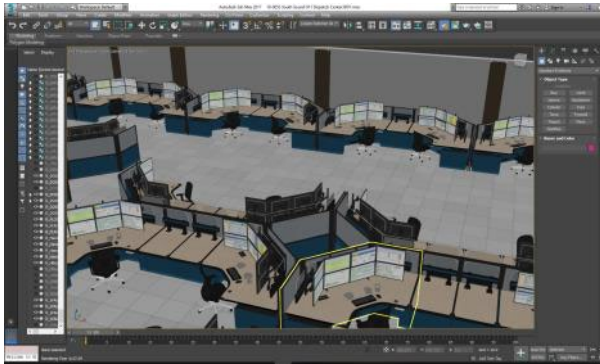
3D Proposal Model, Rendering or VR

3D Product Design

Global Sourcing

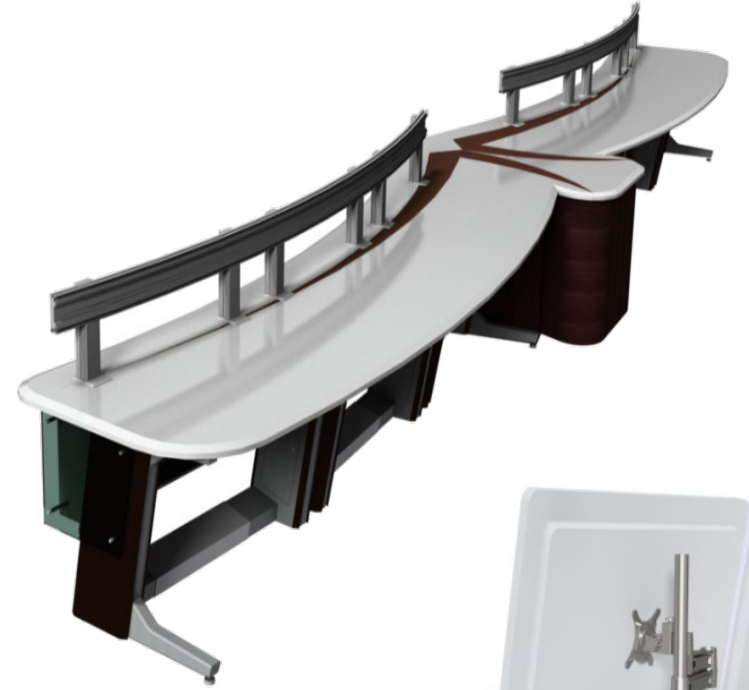
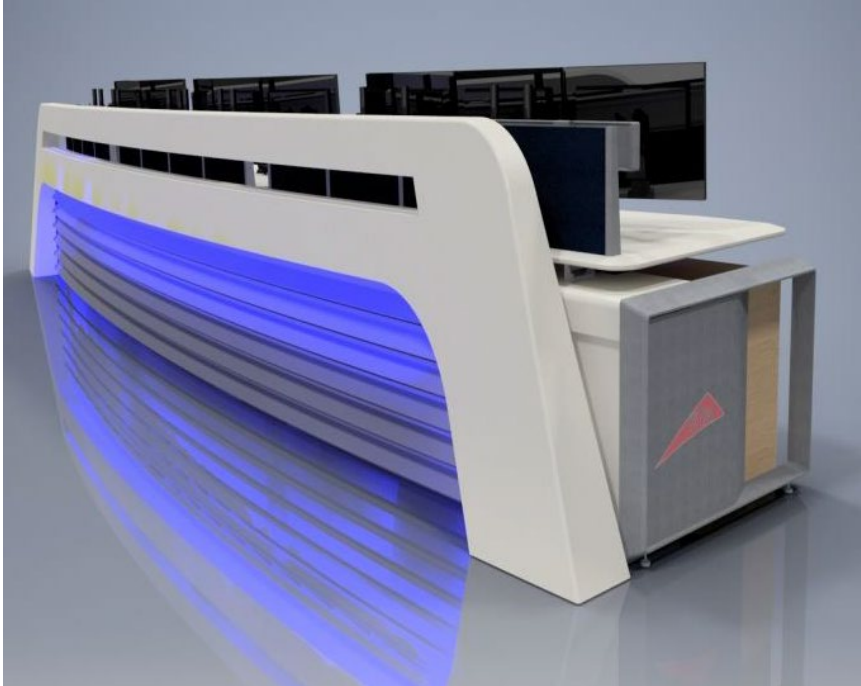
Computer Controlled  
Manufacturing

Staging & Sign-Off



# Design Flexibility

Means customers won't have to compromise





# Layout Flexibility

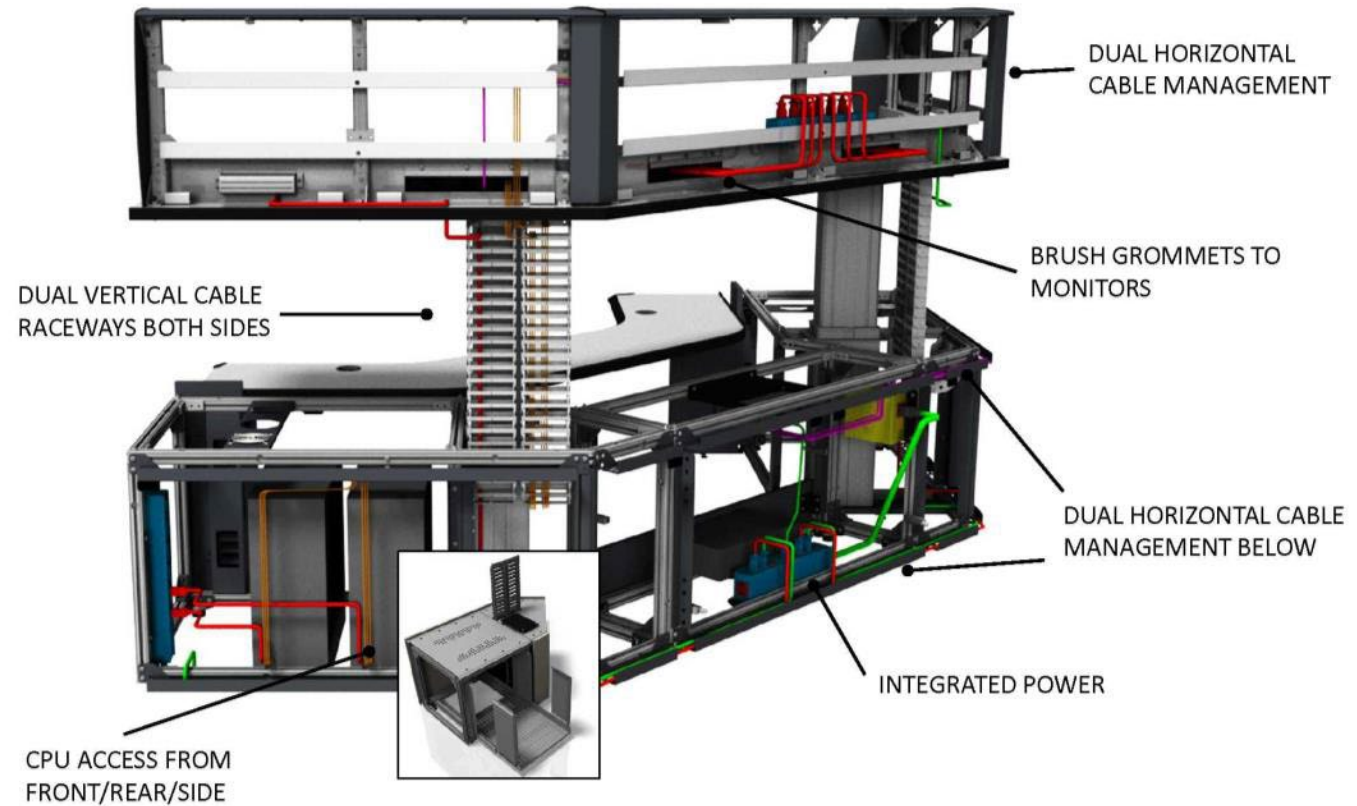
Designed to meet each customer's unique physical constraints



# Durability

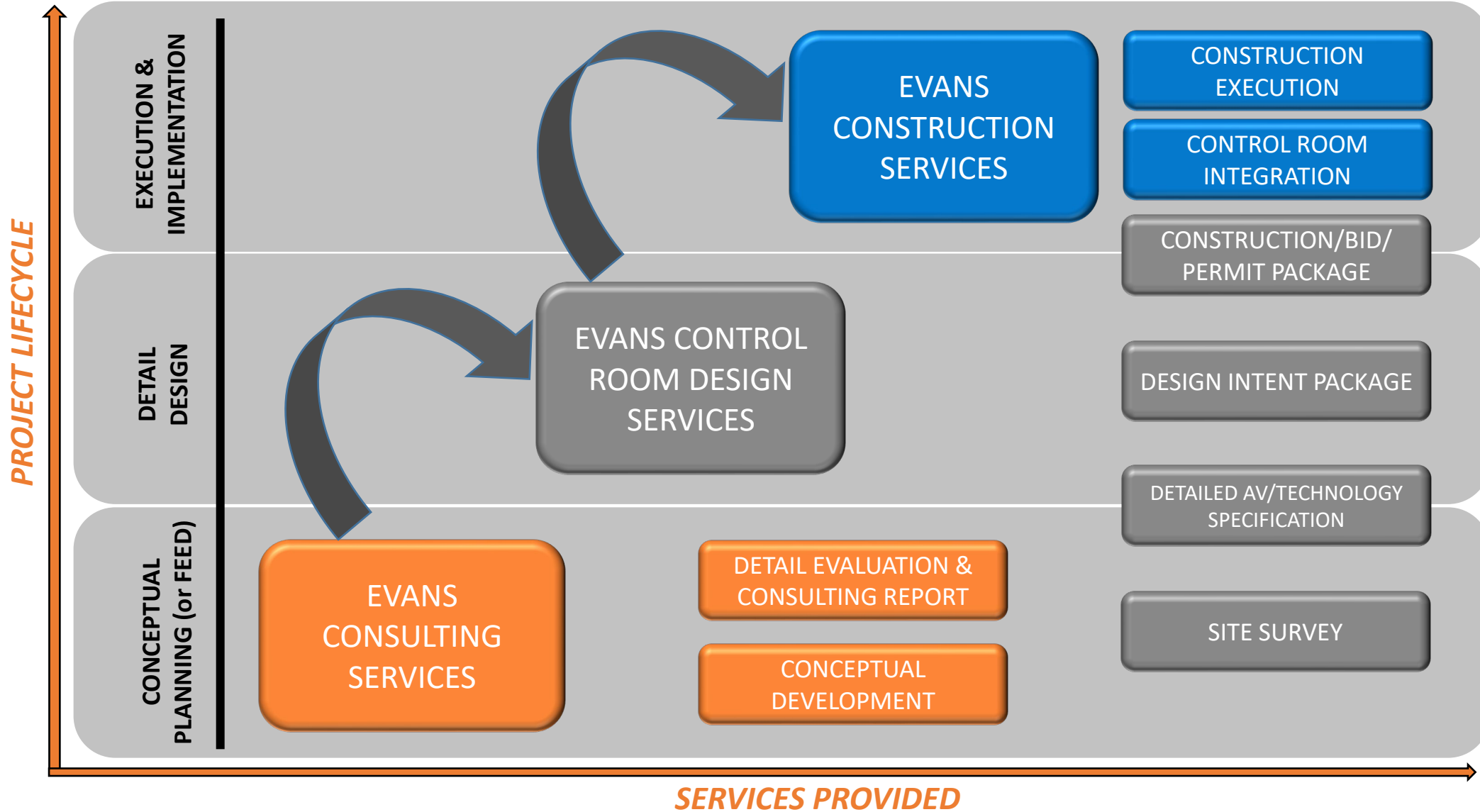
Built like a tank

- Rigid steel and aluminum frame
- Not dependent on exterior panels
- Reconfigurable modular design
- Open portals for continuous wire management
- Lift columns with 550 lbs of lift capacity
- Lifetime Warranty on all Evans consoles



# Evans Service Offerings

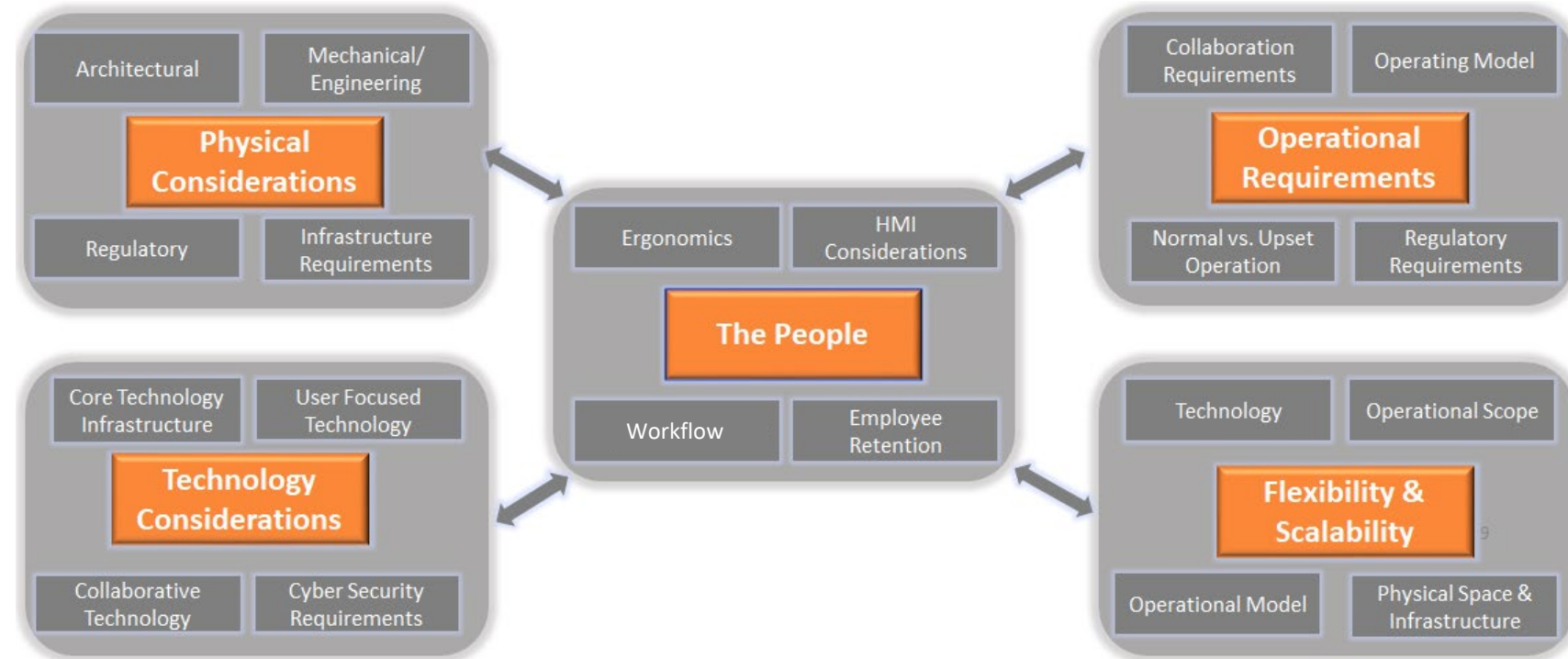
# Evans Services Overview



# Evans Consulting Services

Engaging Evans early can reduce costs and problems later

- Comprehensive approach that looks at all aspects impacting the design of an ideal operating environment
- Unique position to understand trends, technology features, innovative operating models and best practices across industries and geographies
- Flexibility to tailor each solution to the needs of the operation while balancing constraints



# Evans Control Room Design Services

Providing preliminary conceptual designs to full construction level drawings

## ■ Schematic Design

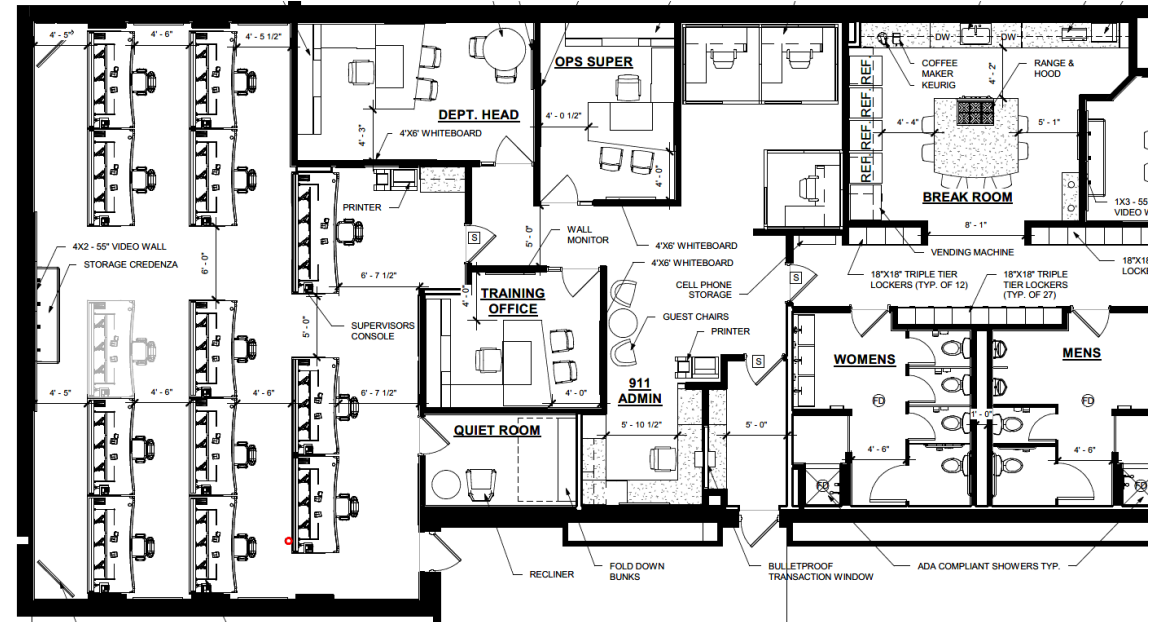
- Conceptual room design options
- Preliminary functional design
- Preliminary visual design

## ■ Design Intent Package

- Floor Plan (with Consoles & Equipment)
- Reflected Ceiling Plan
- Floor Finish Plan (usually conveyed on floor plan)
- Interior Elevations
- Color/Material Board
- Renderings and/or VR representation

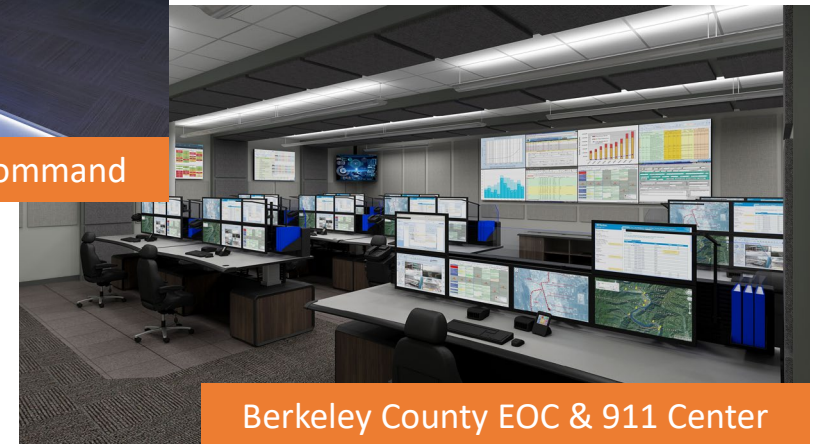
## ■ Construction/Bid/Permit Package

- Stamped Architectural & Engineering drawings with specifications required for construction/bidding/permitting of your Project in the following disciplines:
  - Architectural
  - Structural
  - Mechanical (HVAC)
  - Plumbing
  - Electrical



# Evans Control Room Design Services

Providing Design Services across multiple vertical markets and anywhere in the world



# Evans Construction Services

## Construction Management for the Control Room Suite

### Pre-Construction Planning

- Physical Site Surveys
- Demolition & Construction phasing
- Live cutover planning
- Construction Scheduling & Sequencing
- Safety Plans / Emergency Action Planning

### Construction

- By Evans Project Manager & On-Site Supervisors
- Full Construction services including:
  - Raised flooring
  - Ceilings and Lighting
  - Plumbing
  - HVAC & Electrical
  - Fire Alarm & Fire Protection
  - Acoustical Treatments
  - Access Control
- Kitchens/Breakrooms/Rest & Recovery/Locker Rooms

### Global Reach







After the sale, EvansCare provides ongoing console cleaning and maintenance support

**Before**

**After**



# Final Thoughts

---

- The workforce is changing, a renewed focus on designing Control Rooms is needed to recruit and retain employees...you're not just competing with the refinery down the street, you're competing with the big tech companies (Google, Facebook, Apple, etc.)
- Technology is ever-changing, we need to future-proof capital investments as much as possible to accommodate not only current technology but what's coming in the next 5, 10, 15 years
- Alert, effective and focused Control Room Operators are as critical to the success of every mission critical operation as the software and technology that they interact with
- Design and build it right the first time and for a lifetime
- Please visit me at the AVEVA Enterprise Visibility booth in the Expo

# Thank you!

---

