

NOVEMBER 2022

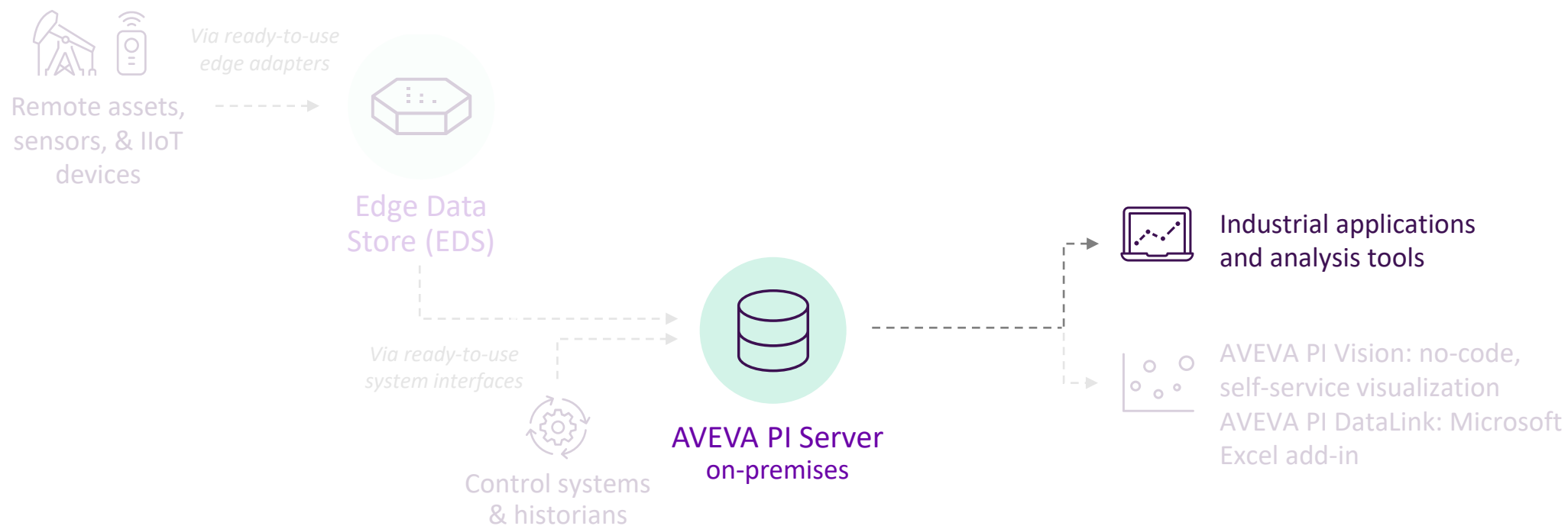
Extending the Reach of the AVEVA™ PI System™ Data

Alicia Coppock, AVEVA Sr. Technical Product Manager

Mana Afshari, AVEVA Sr. Strategic Product Manager

AVEVA

Proven components accelerate time-to-value



PI Web API

Secure RESTful access to AVEVA PI Server data over HTTPS

- Cross-platform programmatic interface to the AVEVA PI System
- Read and write access to all AVEVA PI Server objects
- Newly introduced PI Point Search Endpoint
- Also handles OMF Ingress

Use cases

Connecting Web and Mobile applications to the AVEVA PI System

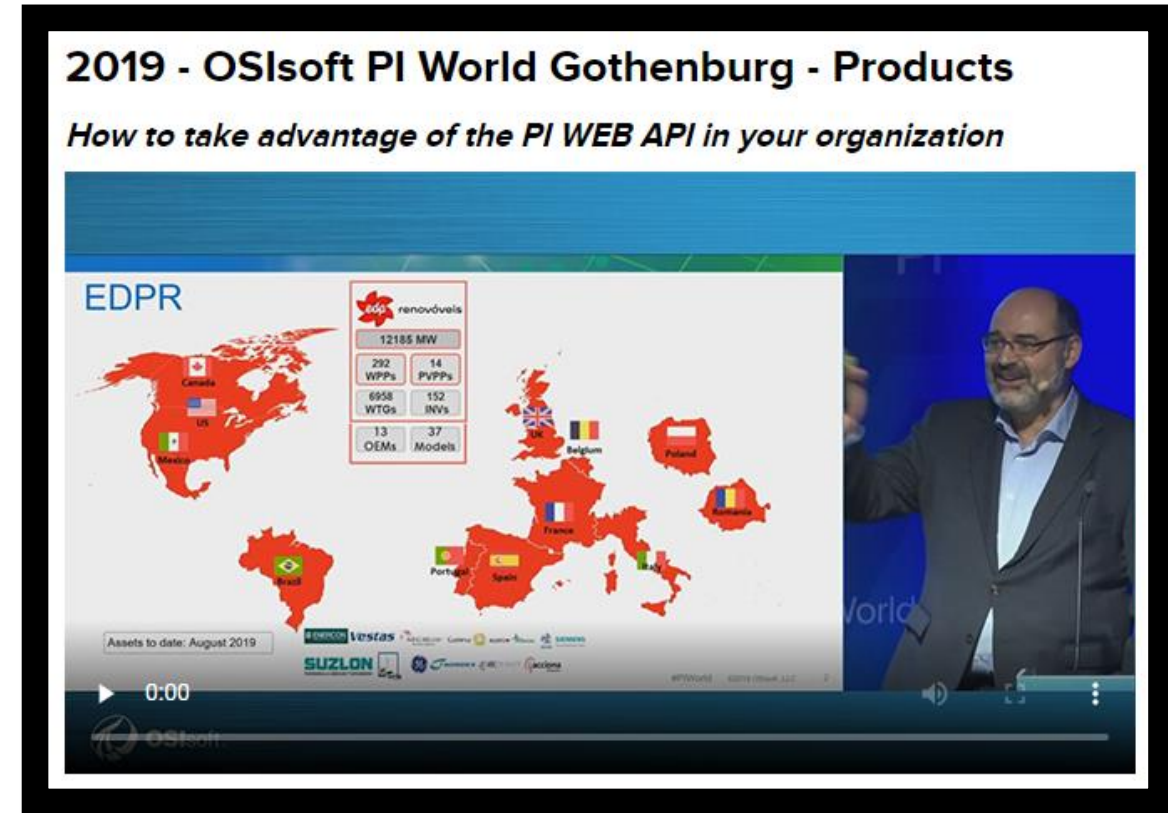
Programmatic access for small scale data science

Leverage a visualization suite other than AVEVA PI Vision

Taking advantage of the PI Web API in your organization

EDP Renewables

- Standardized on using PI Web API for ML Predictive Maintenance
- Reduced execution time of calculations from 8-12 hours down to minutes
- Leveraged Asset Framework (AF) to model all assets in key processes, harnessing the power of their 2M tags



<https://resources.osisoft.com/presentations/how-to-take-advantage-of-the-pi-web-api-in-your-organization>

What's next for PI Web API

Recently released: PI Web API 2021 SP3

Increased
value and
scope

New PI Point Search endpoint

Performant PI Point queries following the AF SDK syntax

OMF Ingress Enhancements

Simplified Delete messages and implemented case insensitivity



In development

Seamless
infrastructure

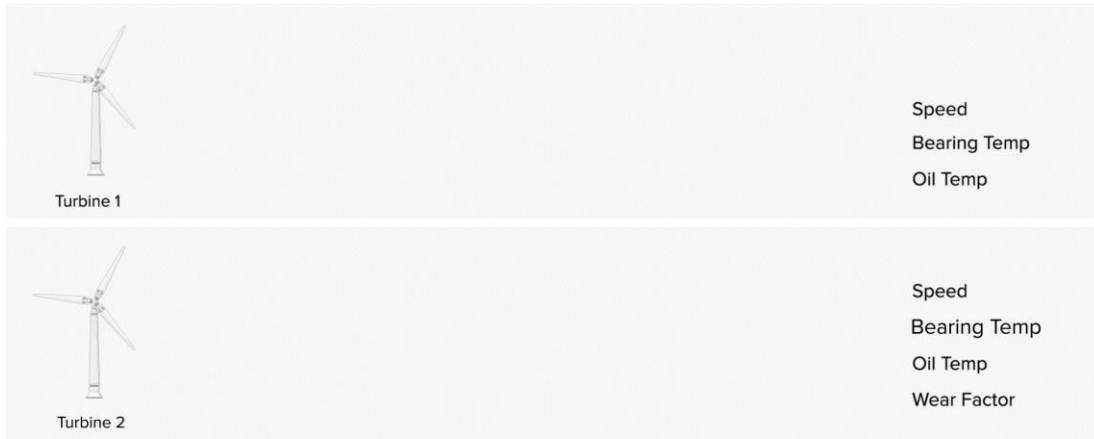
Modern Authentication

Revamping claims for OpenID Connect

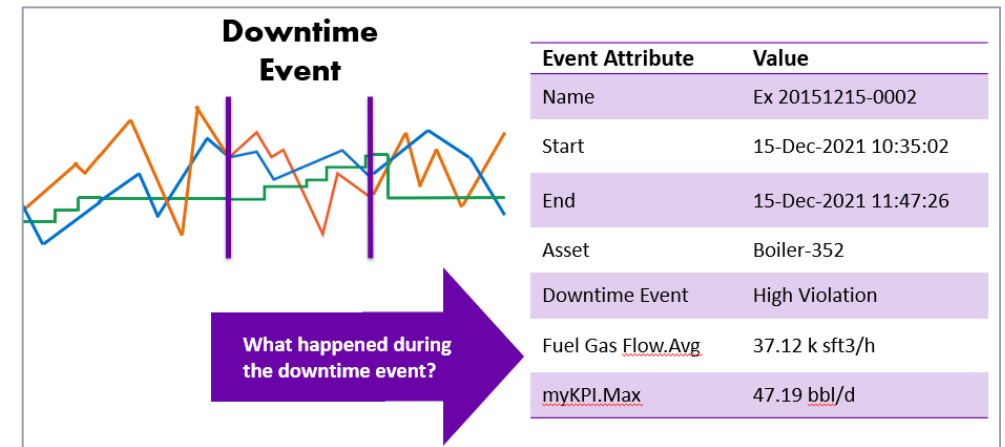
Operational data is not like other data

In raw form, data is difficult to use in analysis and cannot be combined with business data

Time-series data is not naturally aligned

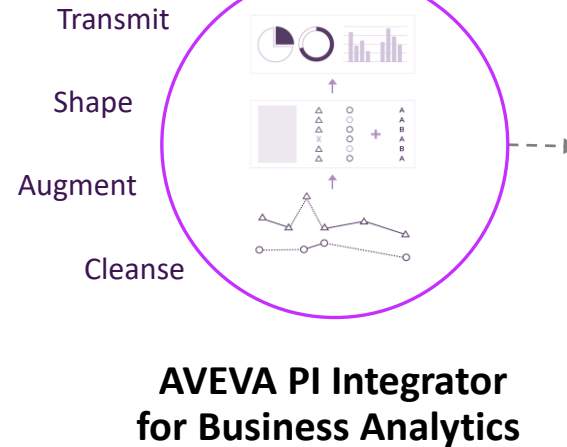
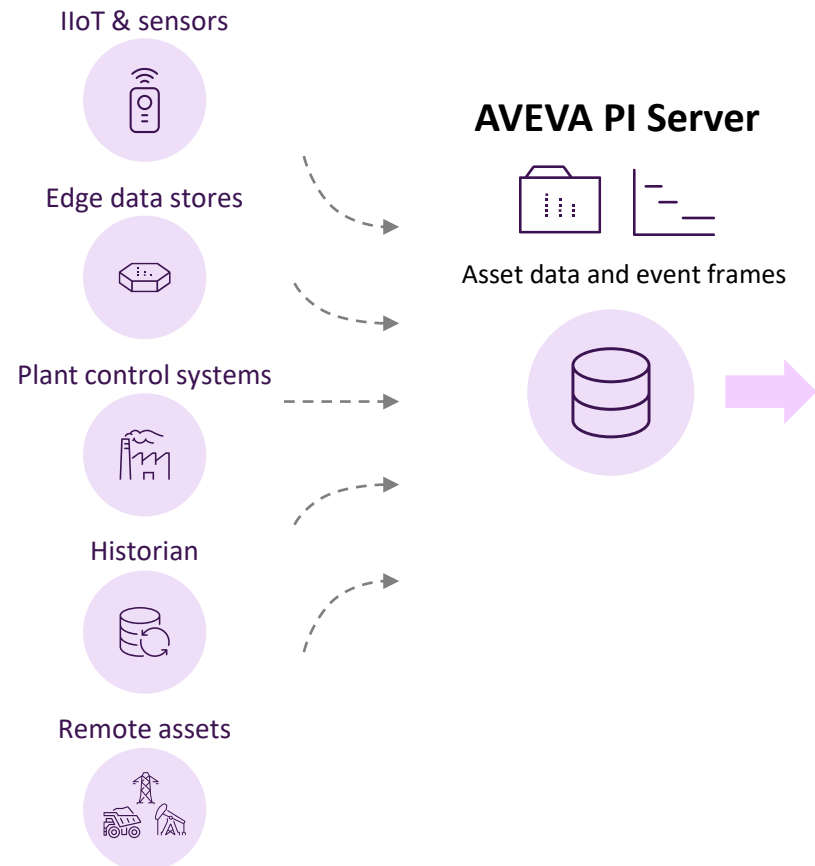


One data stream can represent many discrete events or products

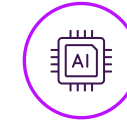


AVEVA™ PI Integrator for Business Analytics

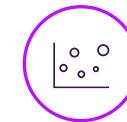
Data Sources



AI/ML platforms



3rd party analytic tools



Enterprise reporting



- Apache Kafka
- Amazon Kinesis
- Amazon Redshift
- Amazon S3
- Cognos
- Google Cloud Pub/Sub
- Google Cloud Storage
- Google Big Query
- Hadoop
- Hive
- Microsoft SQL
- MS Azure
- Oracle
- PowerBI
- SAP HANA
- Spotfire
- SAS
- Tableau

What's next for AVEVA PI Integrator for Business Analytics

Recently released: PI Integrator for Business Analytics 2020 R2 Patch 2

Increased
value and
scope

Native integration to ADLS Gen2

Support user migration from ADLS Gen1 to ADLS Gen2

Update for Google BigQuery

AF change monitoring and data updates for Google BigQuery writer



In development

Manageable
software

Stability enhancements

Improve robustness and stability

Additional logging

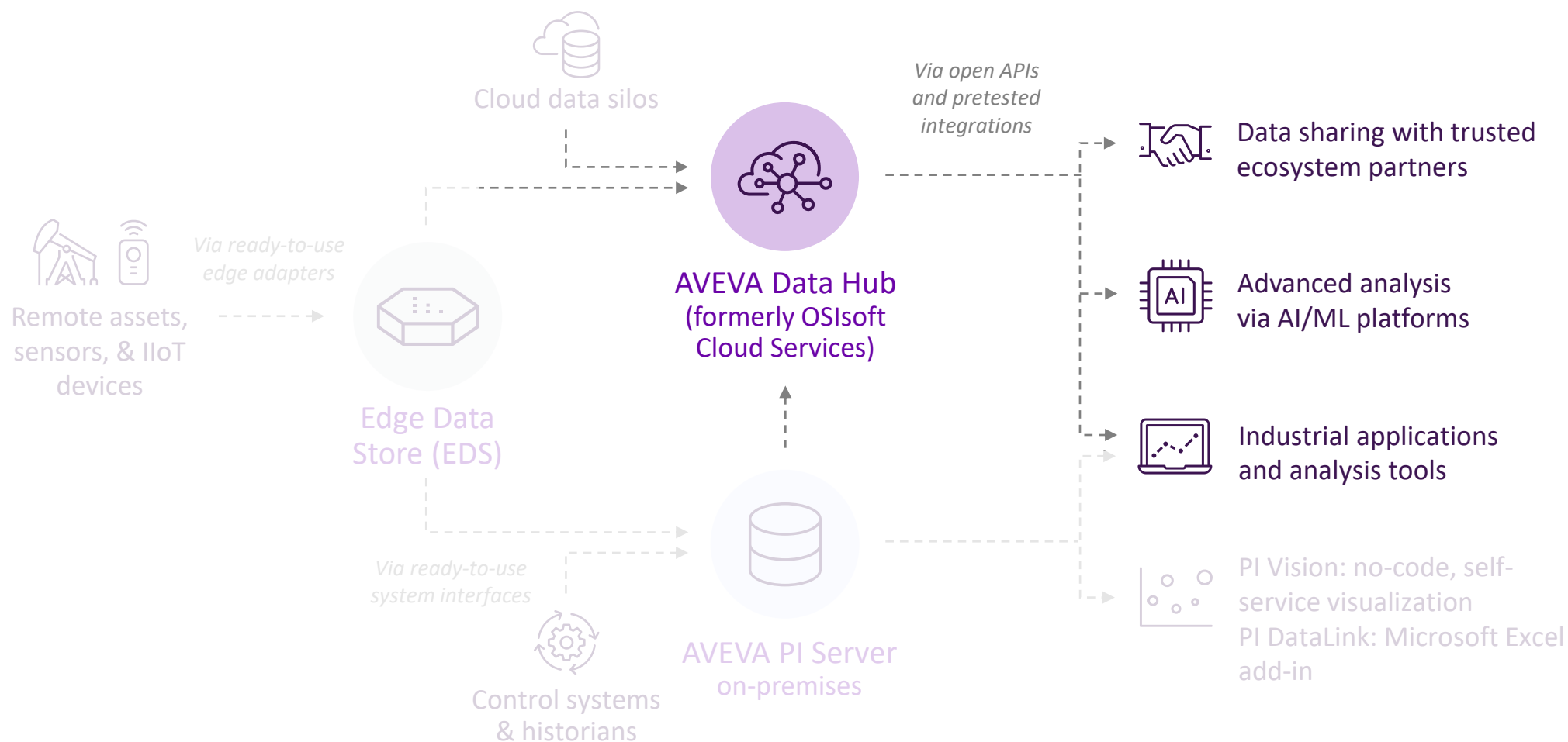
Improve troubleshooting and awareness of system health

Seamless
infrastructure

More Authentication Options

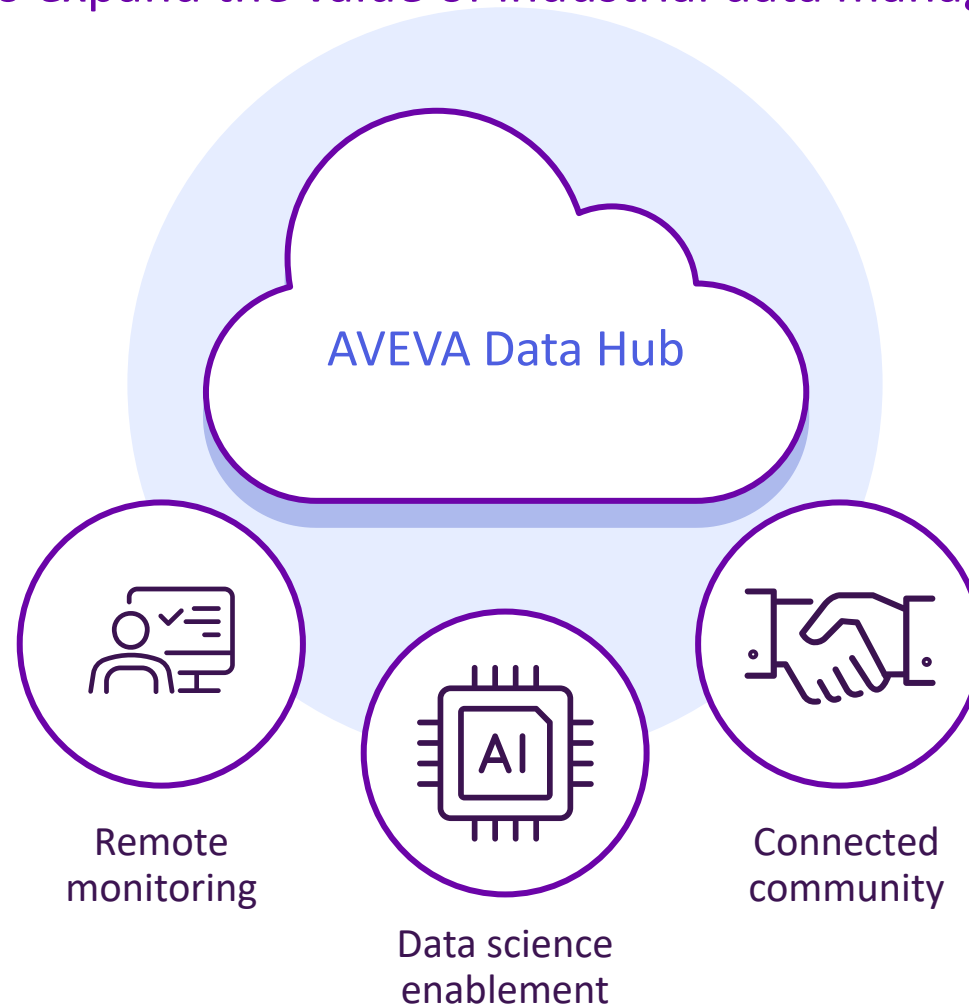
Support for one-way trusted domains

Proven components accelerate time-to-value



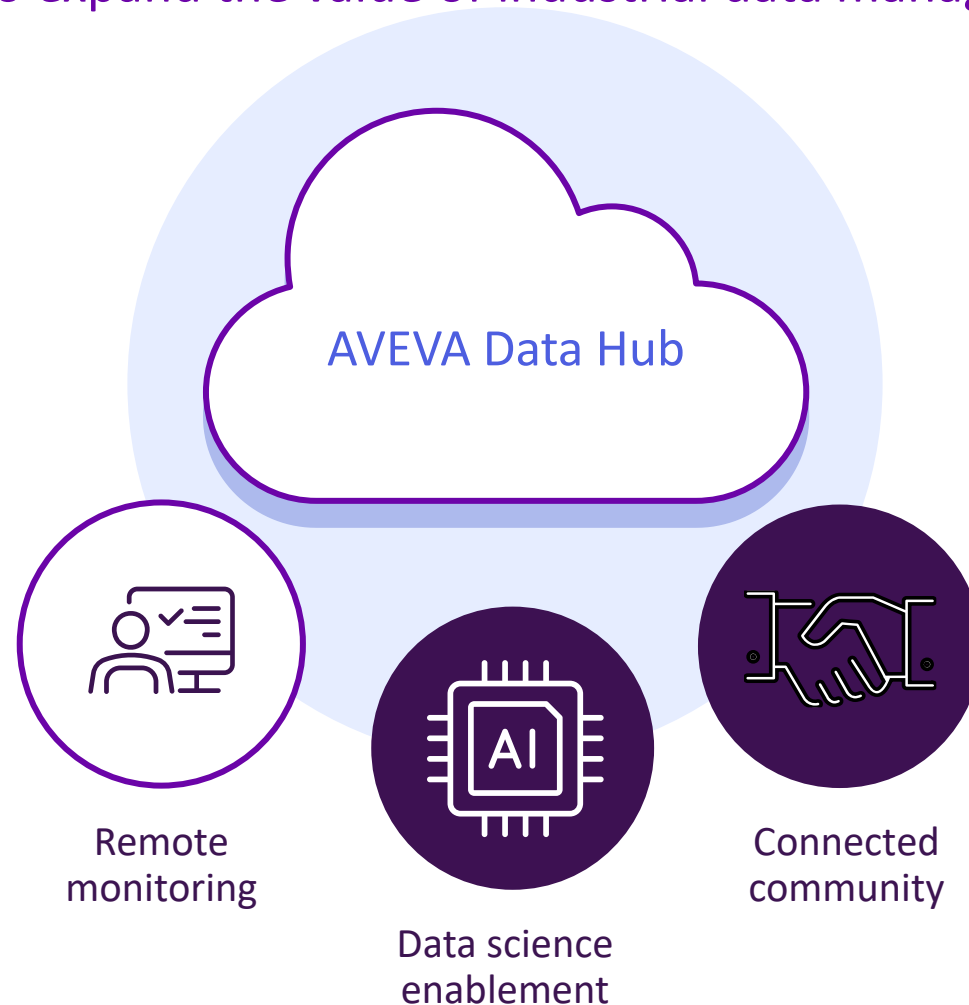
Engage new personas, enable new use cases

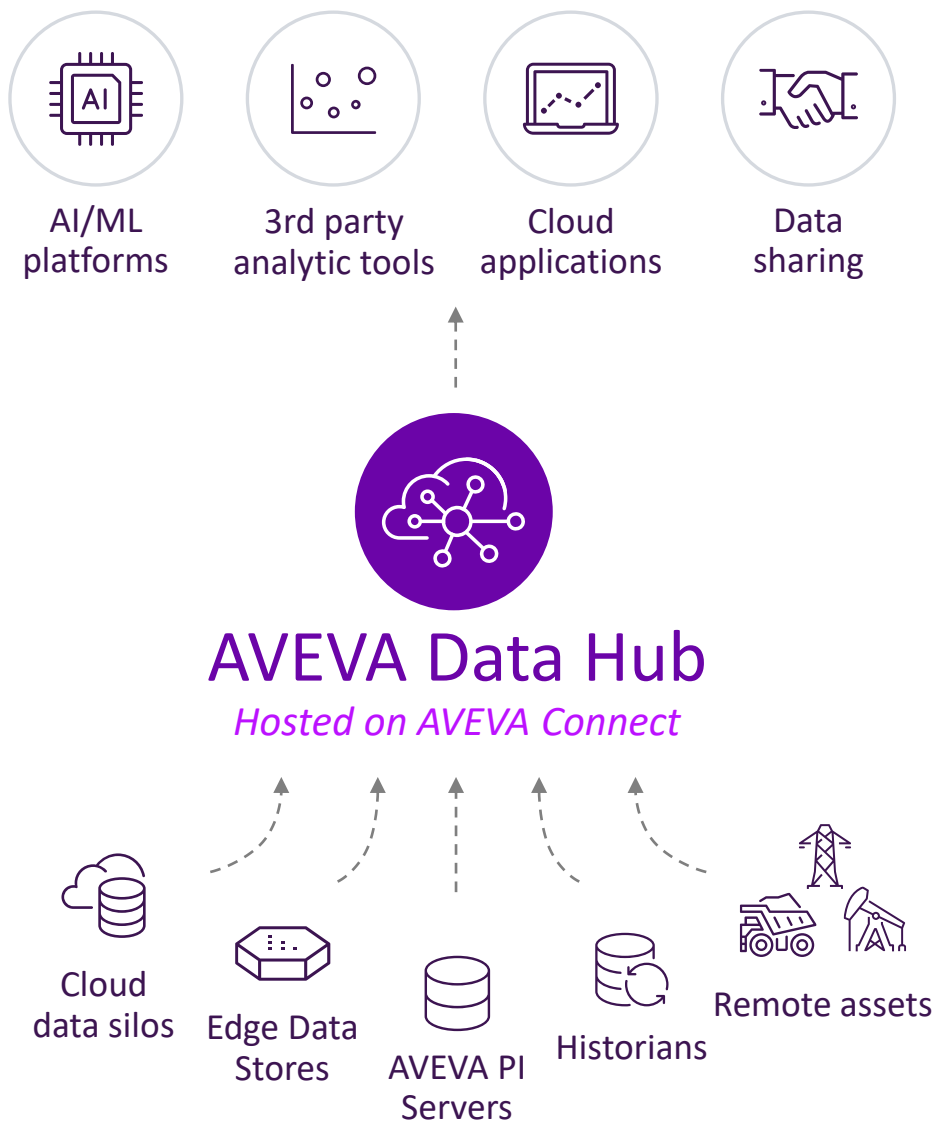
Leverage cloud technology to expand the value of industrial data management



Engage new personas, enable new use cases

Leverage cloud technology to expand the value of industrial data management



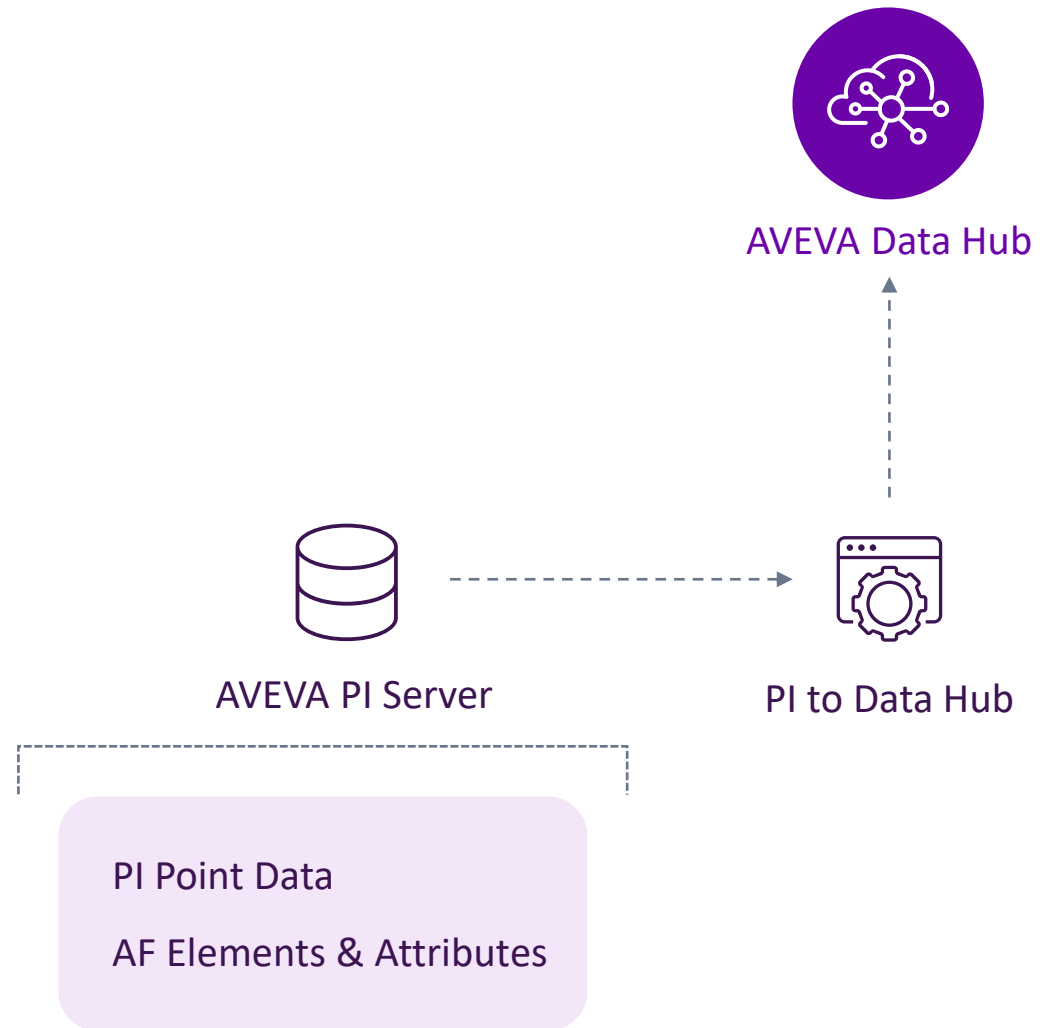


A cloud-native platform for aggregating, storing, enriching, accessing, and analyzing real-time operations data from historians, edge devices, and more

- Managed, secure, multi-tenant platform
- Operated & maintained by AVEVA
- High speed, scalable, elastic, & resilient
- Modern, secure REST APIs

PI to Data Hub

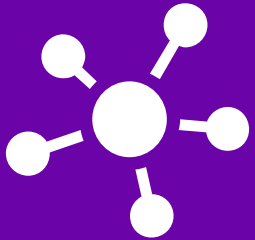
- Easily integrate your AVEVA PI System data with AVEVA Data Hub
- Asset framework (AF) elements & attributes
- Historical & streaming data



Extending PI System data in the cloud with PI to Data Hub

Native ingress to AVEVA Data Hub
Central. Simple. Secure.

Central Configuration



Configure and manage data transfers, security from Data Hub

Simple to use



Simple to install agent runs on-prem

Secure



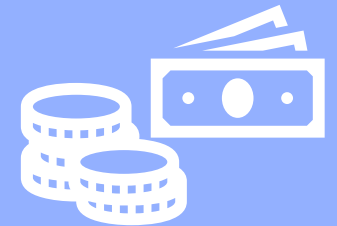
Secure authentication in the cloud
Windows accounts authenticate against on-prem PI Server(s)

Native Software



Off-the-shelf software
24/7 support

Leverage your investment



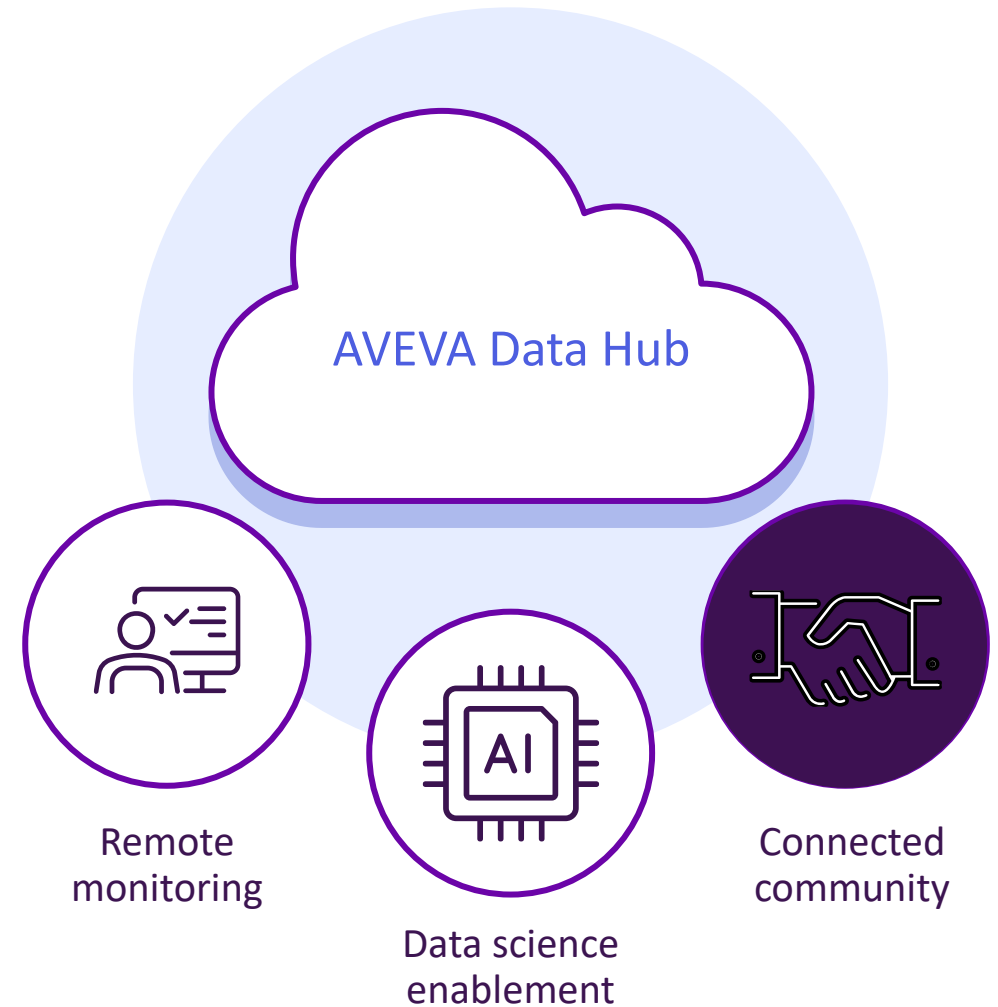
Enable data science, partner applications and community data sharing

AVEVA

Connected Community

Secure data sharing and remote collaboration

- With the **communities feature**, easily share relevant sub-sets of data with key partners, suppliers and logistics companies
- Save costs by enabling the shift to condition-based maintenance
- Leverage new, high-value services such as continuous asset monitoring or automated procurement



AVEVA Data Hub Connected Community

Enables simple & secure operational data sharing across organizations



More
secure way
of sharing
your data



Manage
your own
users in
your AVEVA
Data Hub
tenant



Easily connect
to your
trusted
business
partners in an
AVEVA Data
Hub
community



Control over
your shared
data



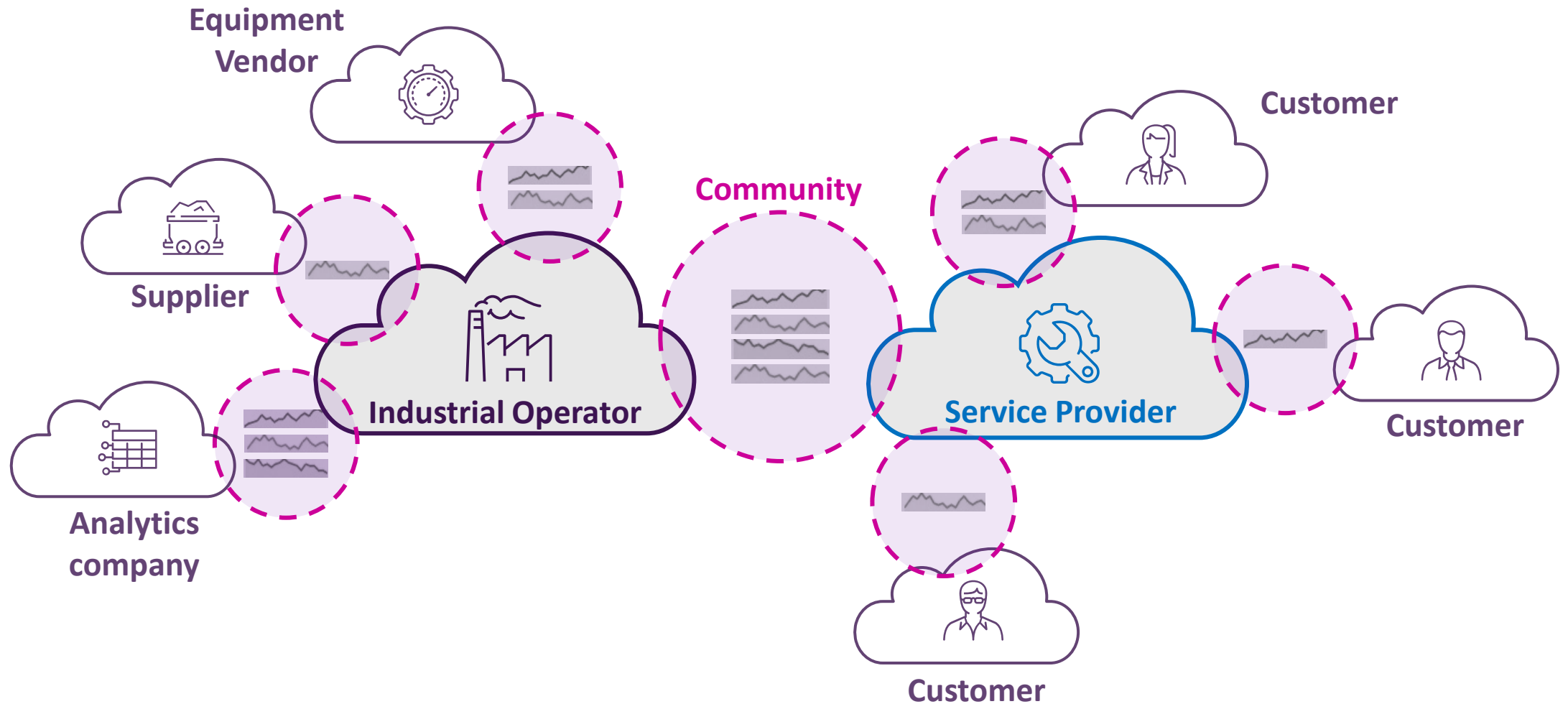
optional

Works great
with an AVEVA
PI Server
(but not
required)



Sharing that
scales to many
business
partners

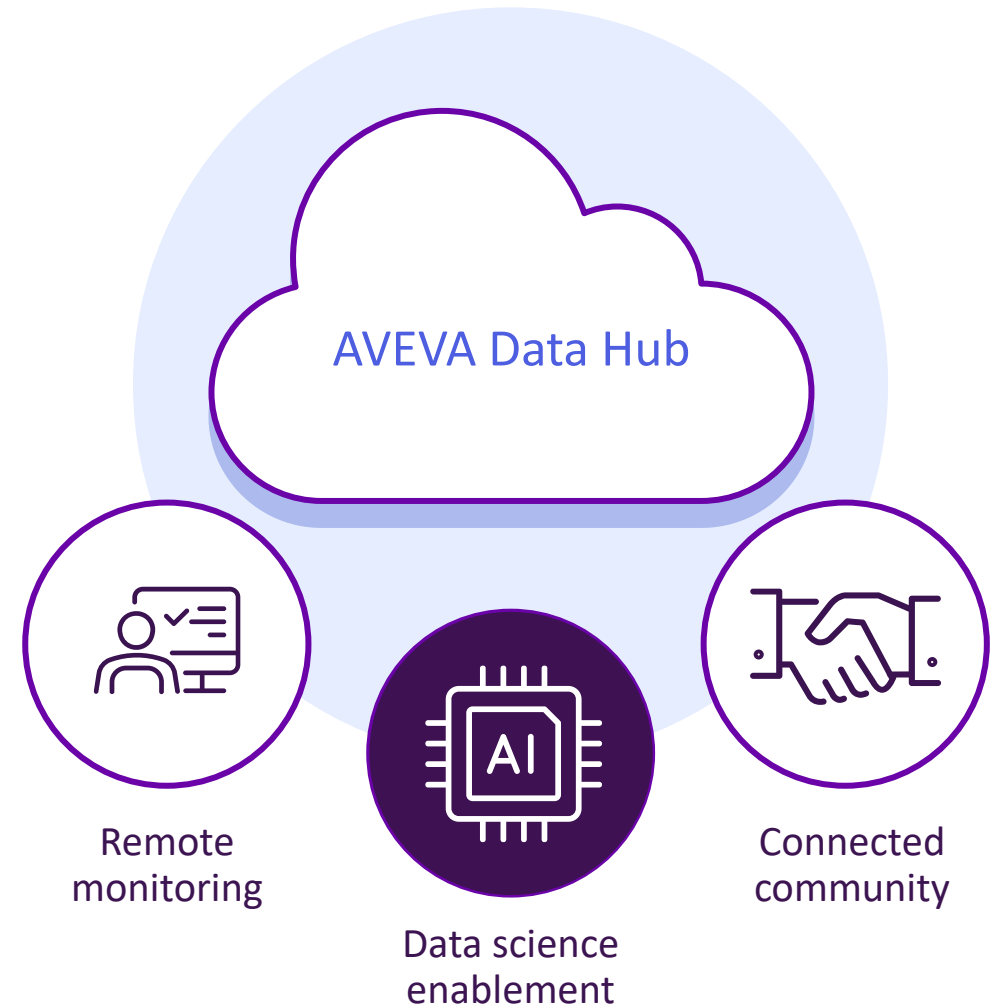
Easily scales to all your partners, even those without PI



Data Science Enablement

Faster data delivery to analysts and data scientists

- Aggregate contextualized and curated data from multiple plants and distributed assets or IIoT devices
- With **Data Views**, run inquiries against large data sets with no impact to operations
- Reduce the need for data wrangling so data scientists can spend their time developing insights
- Get insight for uses such as: predictive maintenance, process optimization, condition monitoring, and demand forecasting



Data Views curate operational data for external consumption

Enabling data exploration, integration, & data science

DATA VIEW

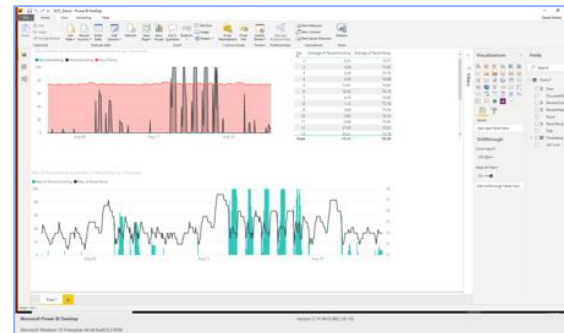
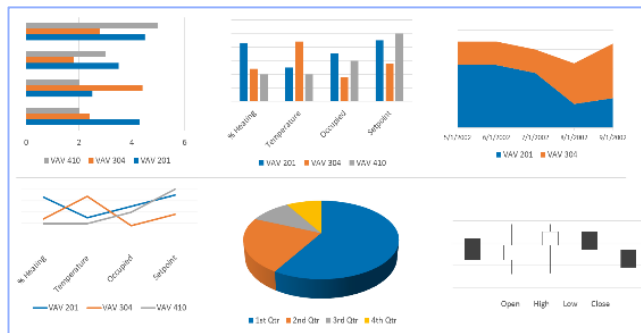
Timestamp	Name	Wind Farm	Manufacturer	Active Power Value kW	Wind Speed
Oct 10, 2022, 12:00:00 AM	AE01	Big Buffalo Wind Farm	Trivale	1111.974	11.2518015
Oct 10, 2022, 1:00:00 AM	AE01	Big Buffalo Wind Farm	Trivale	1101.3666	11.011856
Oct 10, 2022, 2:00:00 AM	AE01	Big Buffalo Wind Farm	Trivale	1344.1127	10.481206
Oct 10, 2022, 3:00:00 AM	AE01	Big Buffalo Wind Farm	Trivale	1083.0879	10.267265
Oct 10, 2022, 4:00:00 AM	AE01	Big Buffalo Wind Farm	Trivale	1014.003	8.934044
Oct 10, 2022, 5:00:00 AM	AE01	Big Buffalo Wind Farm	Trivale	1490.9729	11.637246
Oct 10, 2022, 6:00:00 AM	AE01	Big Buffalo Wind Farm	Trivale	484.01773	7.505134
Oct 10, 2022, 7:00:00 AM	AE01	Big Buffalo Wind Farm	Trivale	769.05817	7.385011
Oct 10, 2022, 8:00:00 AM	AE01	Big Buffalo Wind Farm	Trivale	733.9142	9.447613
Oct 10, 2022, 9:00:00 AM	AE01	Big Buffalo Wind Farm	Trivale	379.49713	7.02852
Oct 10, 2022, 10:00:00 AM	AE01	Big Buffalo Wind Farm	Trivale	1523.0479	13.044865
Oct 10, 2022, 11:00:00 AM	AE01	Big Buffalo Wind Farm	Trivale	1526.3428	13.379772
Oct 10, 2022, 12:00:00 PM	AE01	Big Buffalo Wind Farm	Trivale	-0.64833814	14.5187
Oct 10, 2022, 1:00:00 PM	AE01	Big Buffalo Wind Farm	Trivale	1521.683	13.470598

Data Science Tools
& Data Exploration

Data Science
via Code

Partners & Apps

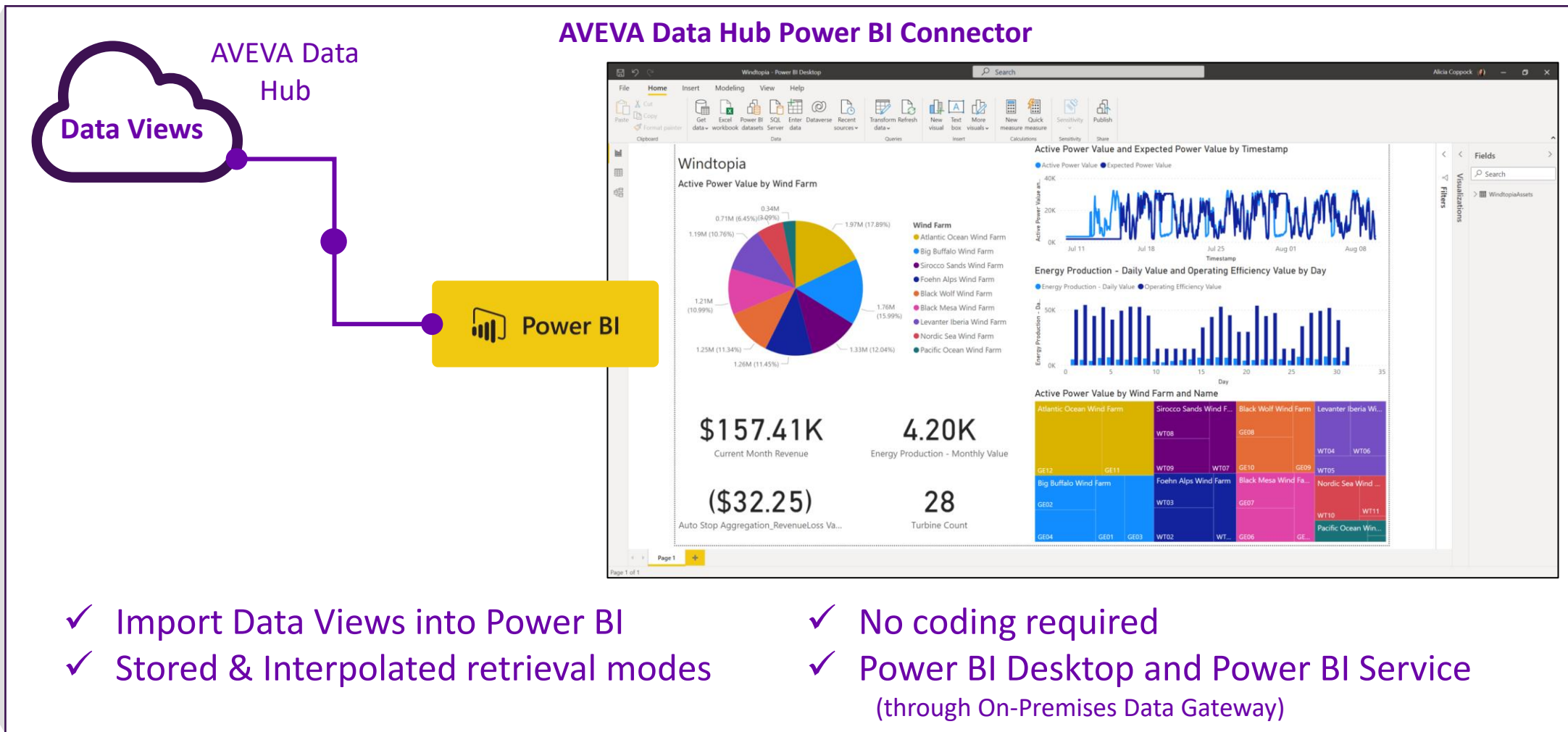
Cloud Platforms



Easily slice & dice your Data Hub data in Power BI



ADH Power BI Connector

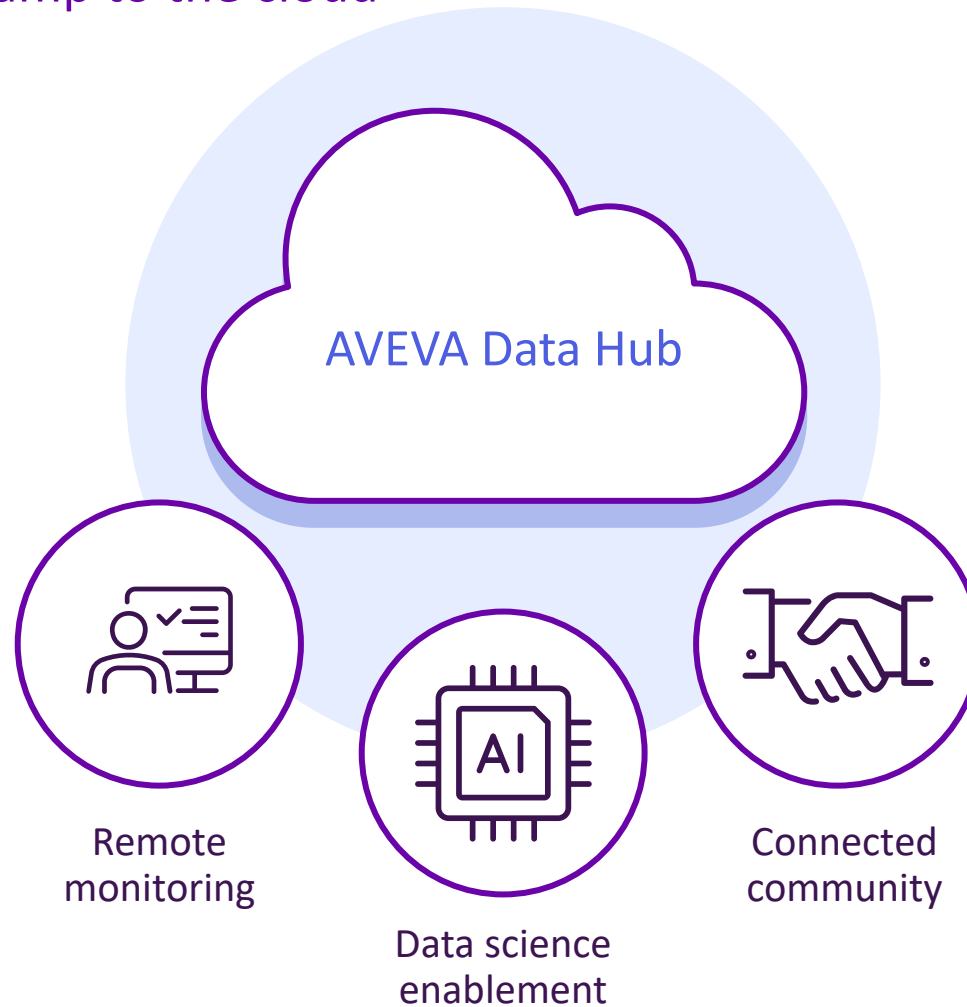


- ✓ Import Data Views into Power BI
- ✓ Stored & Interpolated retrieval modes

- ✓ No coding required
- ✓ Power BI Desktop and Power BI Service (through On-Premises Data Gateway)

Engage new personas, enable new use cases

With the fastest, easiest onramp to the cloud



Learn More about AVEVA Data Hub

Upcoming Talks in the Cloud Track

Day 3: Session 4

Harnessing the power of
Sequential Data Store (Sds) and
Assets for developers and
partners

Developer Technologies

Day 3: Session 5

Aggregating data with Data
Hub asset rules and data
views for analytics and
applications

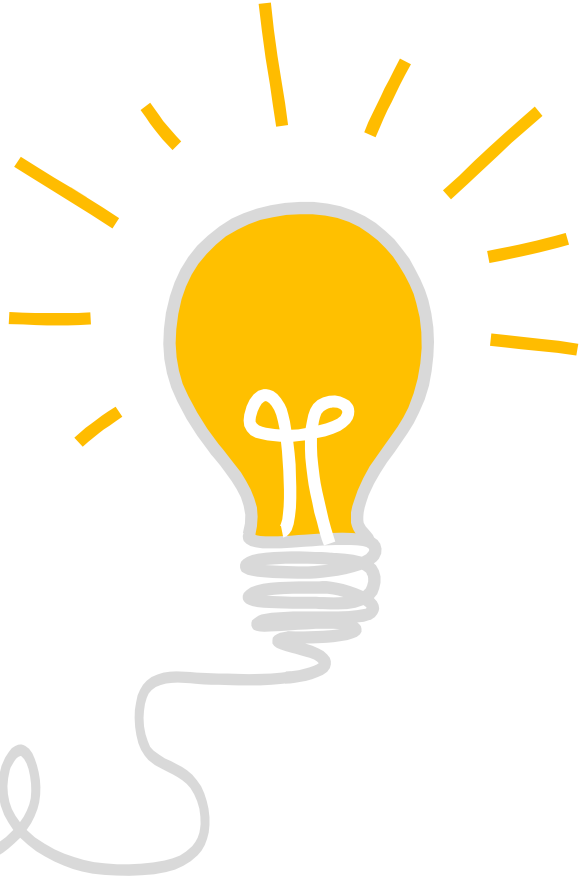
Data Science Enablement

Day 3: Session 6

Uniting the connected
community through secure and
transparent industrial data
sharing

Data Sharing

How can you influence the AVEVA PI System and AVEVA Data Hub roadmaps?



<https://feedback.aveva.com>

Let us know your product feedback!



Alicia Coppock

Sr. Technical Product Manager

- AVEVA
- alicia.coppock@aveva.com



Mana Afshari

Sr. Strategic Product Manager

- AVEVA
- mana.afshari@aveva.com

Questions?

Please wait for the microphone
State your name and company



Please remember to...

Navigate to this session in the mobile
app to complete the survey.





Thank you

AVEVA

This presentation may include predictions, estimates, intentions, beliefs and other statements that are or may be construed as being forward-looking. While these forward-looking statements represent our current judgment on what the future holds, they are subject to risks and uncertainties that could result in actual outcomes differing materially from those projected in these statements. No statement contained herein constitutes a commitment by AVEVA to perform any particular action or to deliver any particular product or product features. Readers are cautioned not to place undue reliance on these forward-looking statements, which reflect our opinions only as of the date of this presentation.

The Company shall not be obliged to disclose any revision to these forward-looking statements to reflect events or circumstances occurring after the date on which they are made or to reflect the occurrence of future events.

 [linkedin.com/company/aveva](https://www.linkedin.com/company/aveva)

 [@avevagroup](https://twitter.com/avevagroup)

ABOUT AVEVA

AVEVA is a global leader in industrial software, driving digital transformation and sustainability. By connecting the power of information and artificial intelligence with human insight, AVEVA enables teams to use their data to unlock new value. We call this Performance Intelligence. AVEVA's comprehensive portfolio enables more than 20,000 industrial enterprises to engineer smarter, operate better and drive sustainable efficiency. AVEVA supports customers through a trusted ecosystem that includes 5,500 partners and 5,700 certified developers around the world. The company is headquartered in Cambridge, UK, with over 6,500 employees and 90 offices in over 40 countries.

Learn more at www.aveva.com