

NOVEMBER 16, 2022

---

# Data Driven Asset Lifecycle Management

Engineering Data Powers Operation

Martin Blumoehr / Chad Mossak

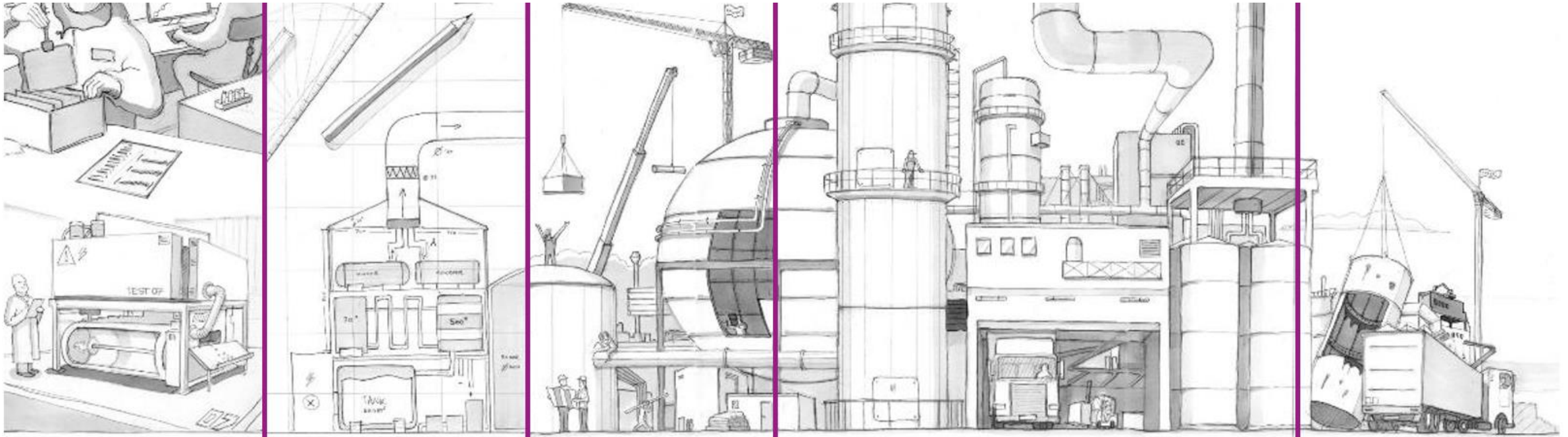
AVEVA

# OneCAE – Data Driven Asset Lifecycle Management

Engineering Data Powers Operation

Martin Blumoehr  
Chad Mossak

Aveva World Conference  
San Francisco  
November 2022



## All we need is 20 seconds ...

---

20 sec.

**Evonik makes  
life better day in, day out.**

Our 33,000 employees are  
driven by one idea: No product is so perfect  
that you can't improve it. To make that  
happen,

**we go beyond chemistry.**

Turning salmon into vegetarians  
and salts into heat generators.

That's specialty chemicals. And that's  
where we're **among the  
best in class.**

5  
sec.

10 sec.

# That's specialty chemicals. And that's where we're among the best in class.

---

**> €15 billion**

sales\*

**€2.4 billion**

adjusted EBITDA\*

**€1.17**

dividend per share\*\*

**15.9%**

adjusted EBITDA margin\*

**~80%**

of sales from  
leading market positions

**€929 million**

investment in tangible assets

**>33,000**

employees

**106**

nationalities

**€2.12**

adjusted earnings  
per share\*

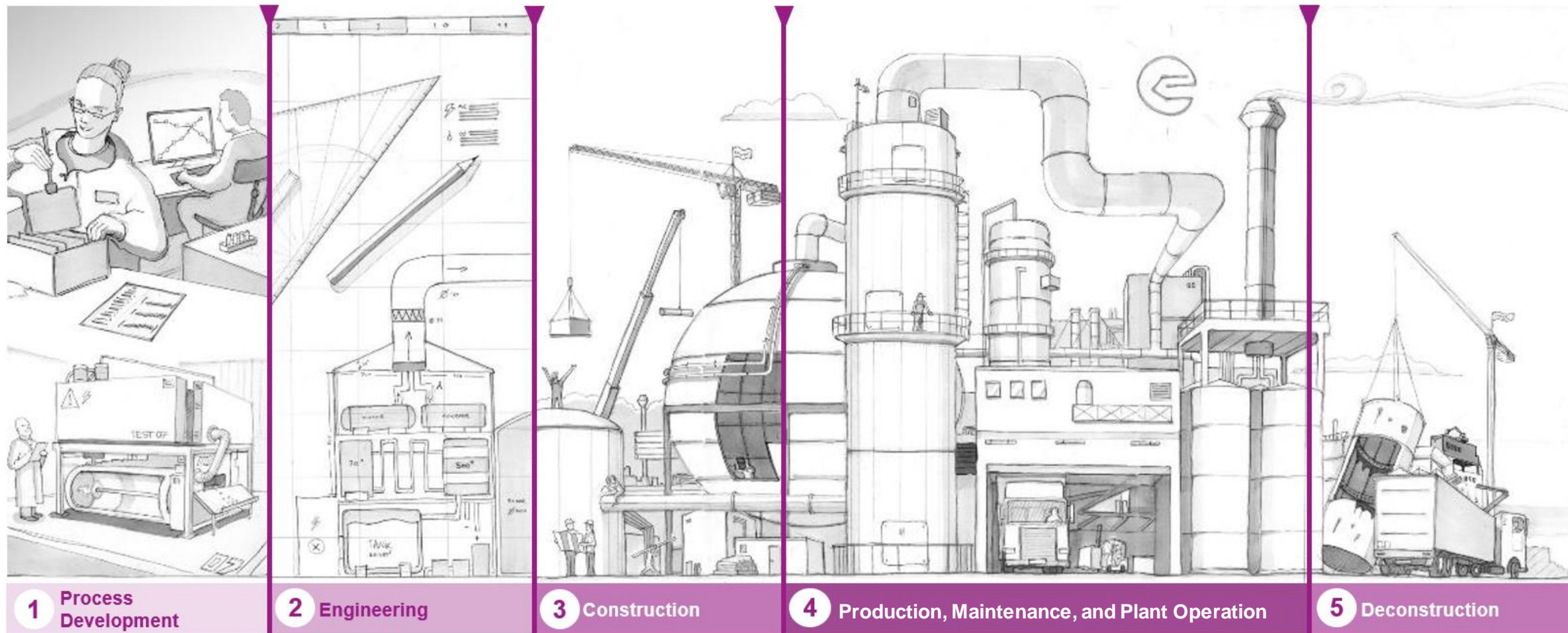
\* Fiscal 2021, ongoing activities

\*\* Proposal to the Annual General Meeting in May 2022

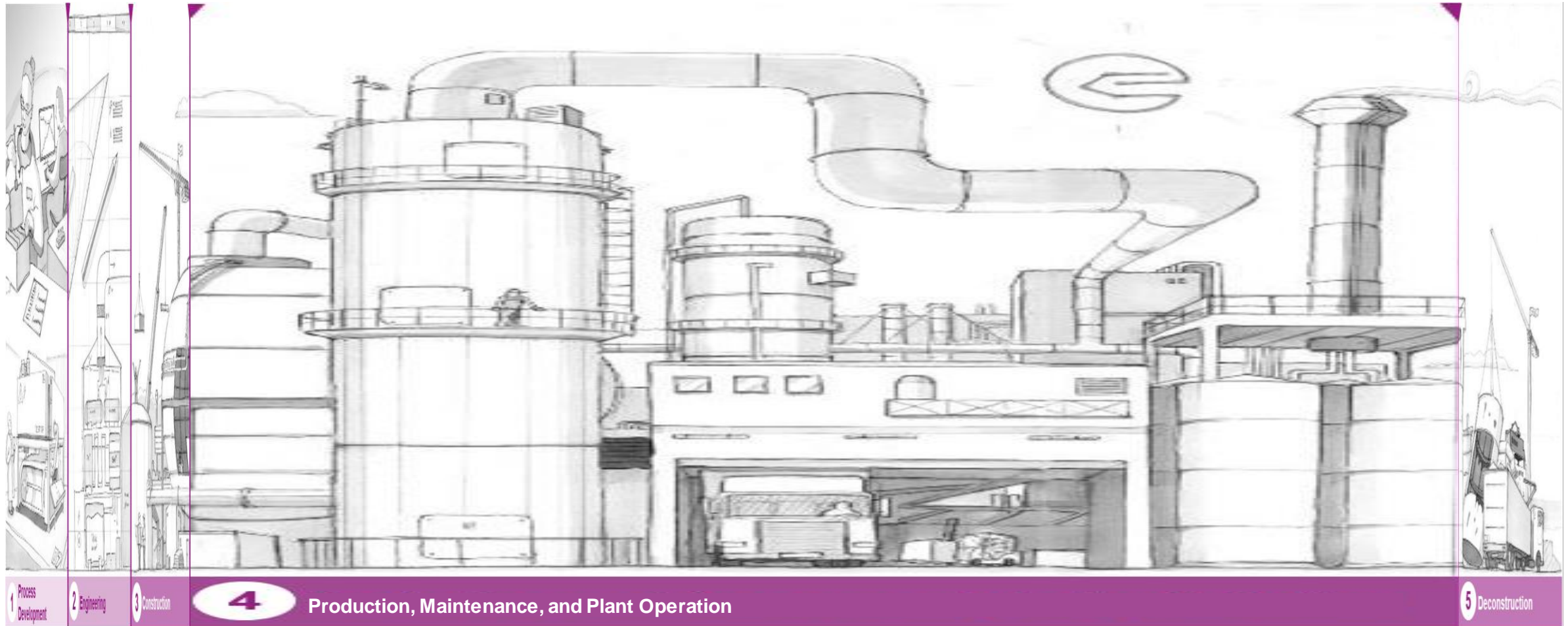
# LEADING BEYOND CHEMISTRY TO IMPROVE LIFE, TODAY AND TOMORROW



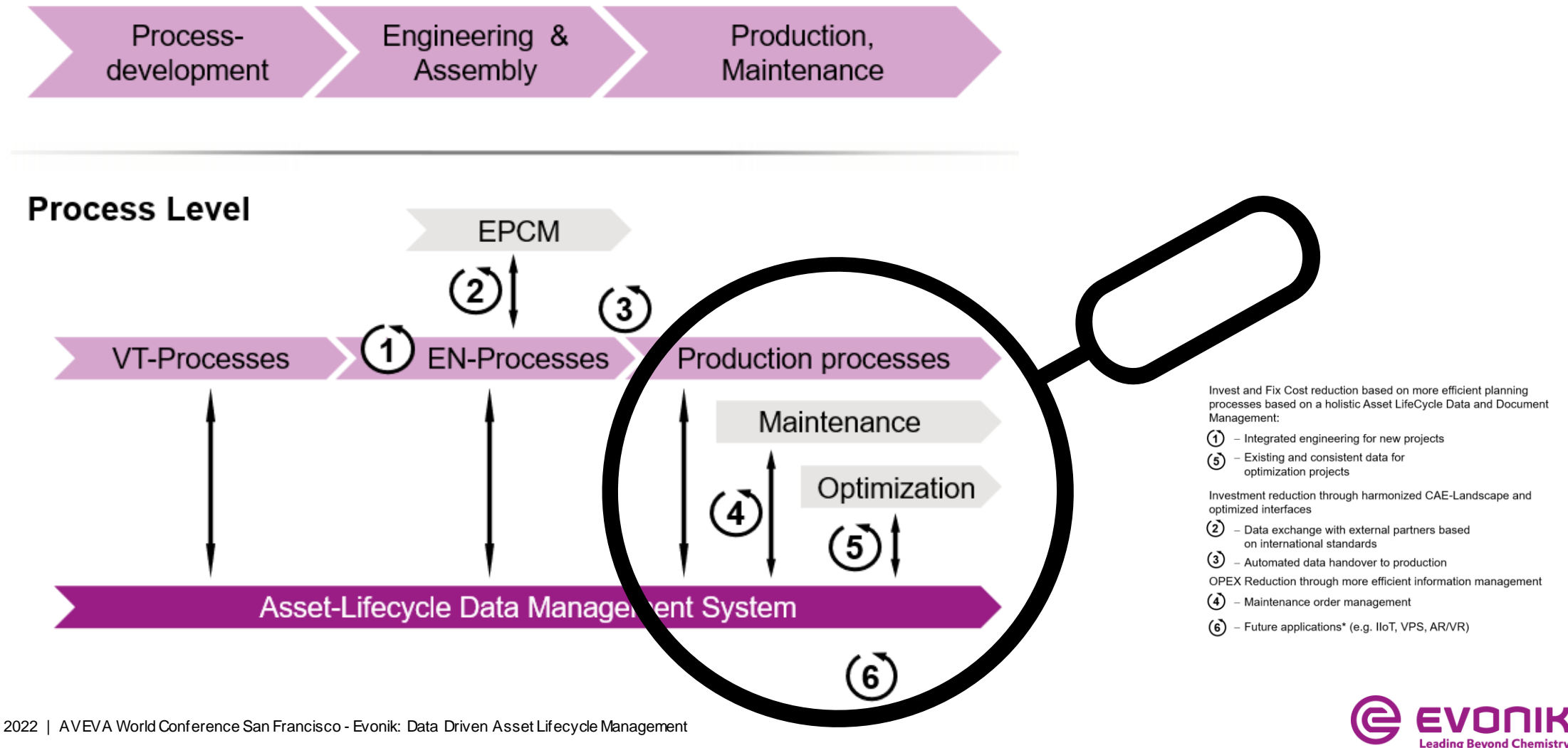
# Data Driven *Asset Lifecycle Management* – from process to demolition



# The longest time span for the Asset Lifecycle is "Production, Maintenance & Plant Operation"



## And benefits can be identified in all phases!

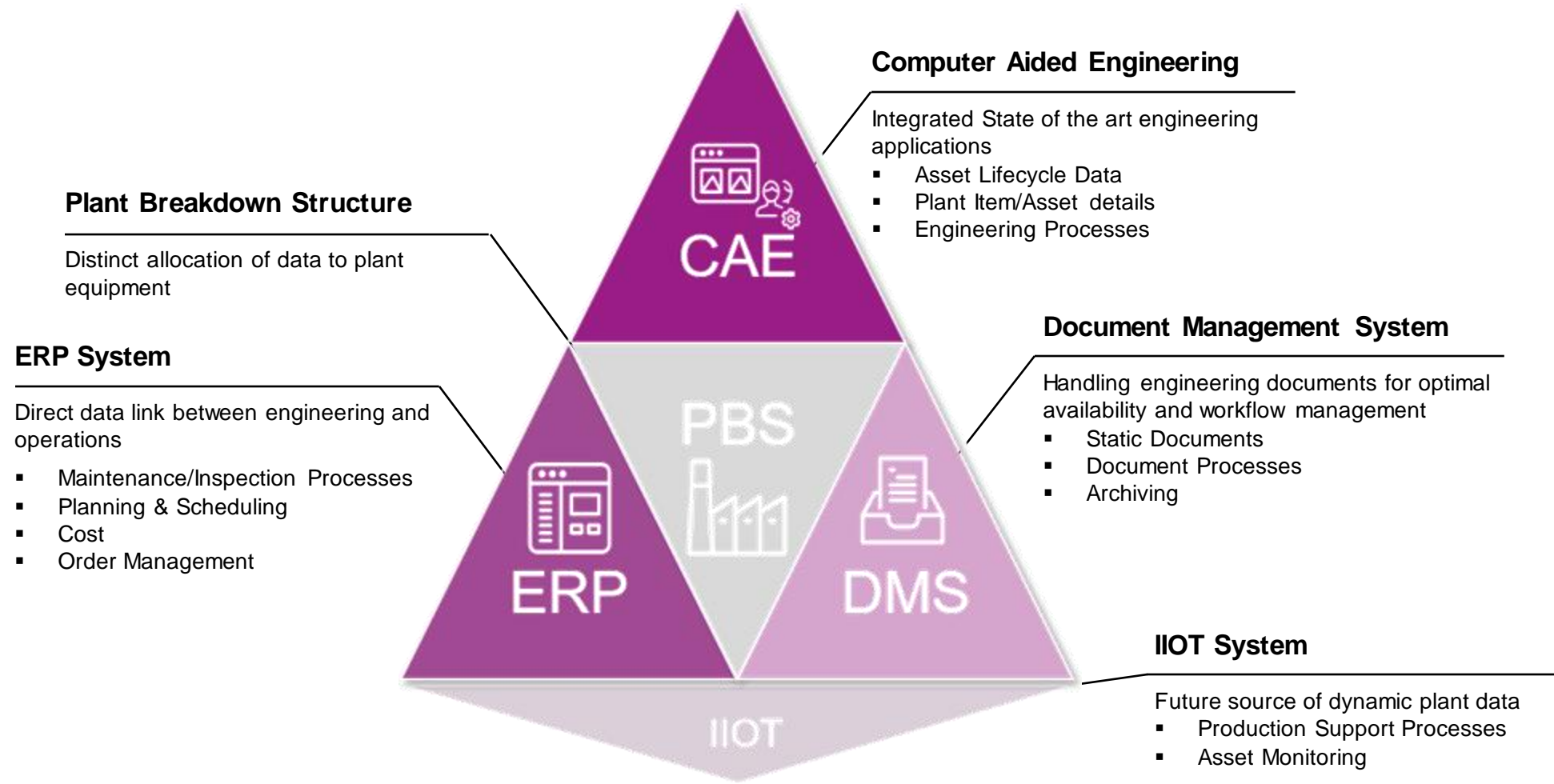




# Key success factor for Operations is the seamless integration of CAE, ERP and DMS – based on a harmonized "Plant Breakdown Structure"

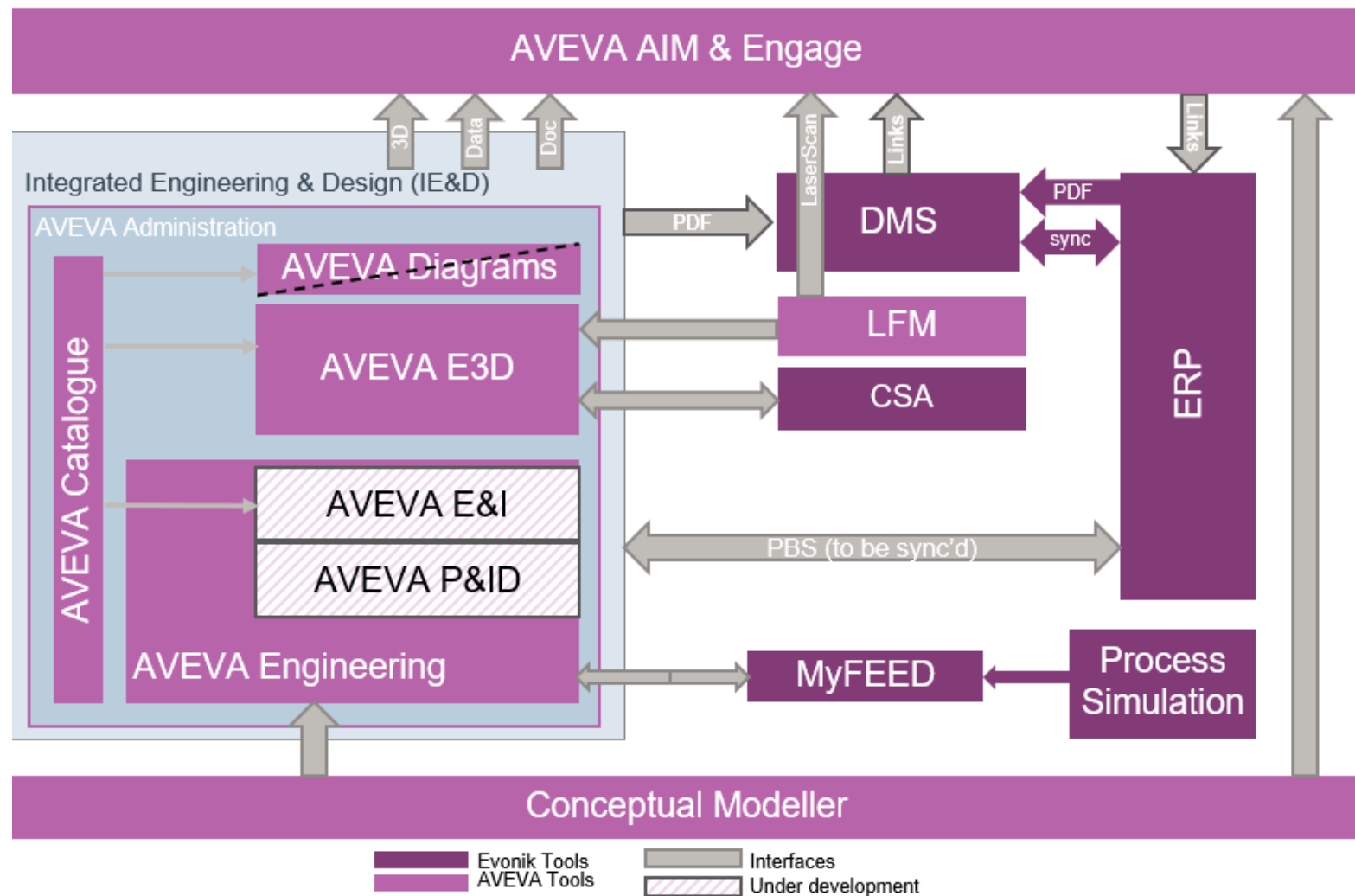


# The targeted ecosystem utilizes the CAE, DMS and ERP into one integrated system to support operation and maintenance!

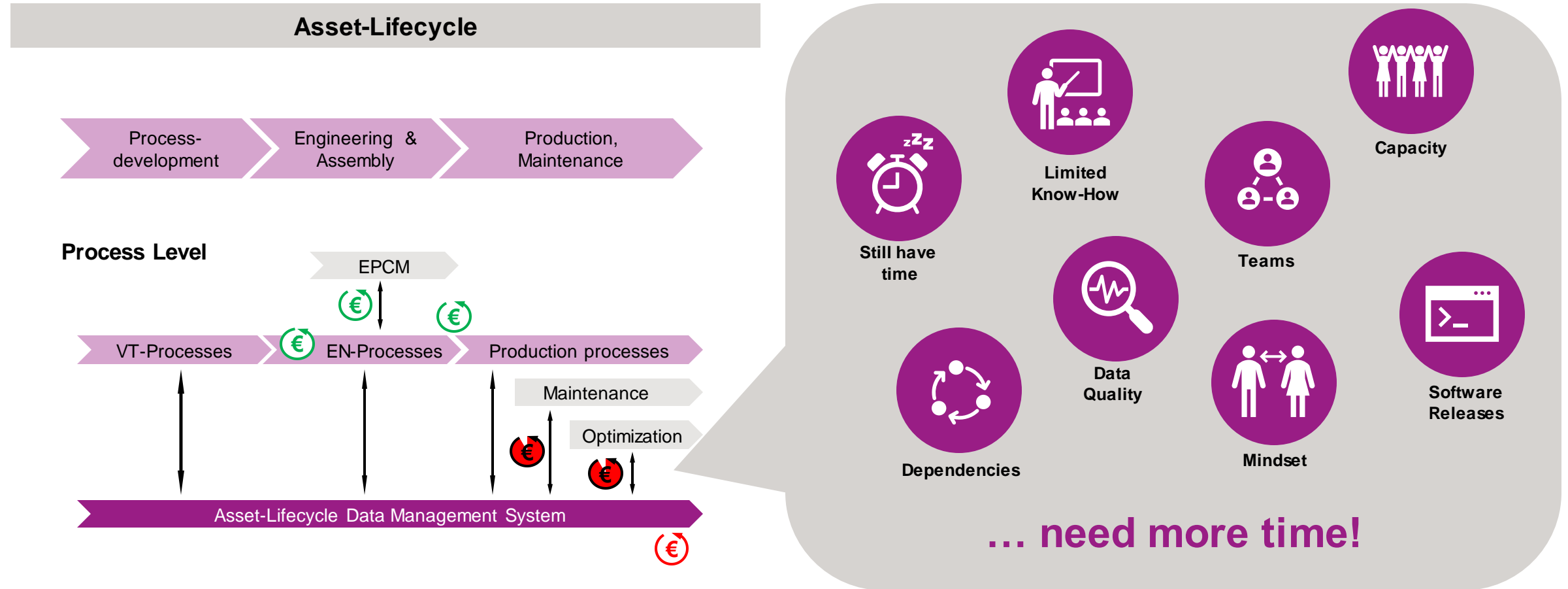


## Our Solution...

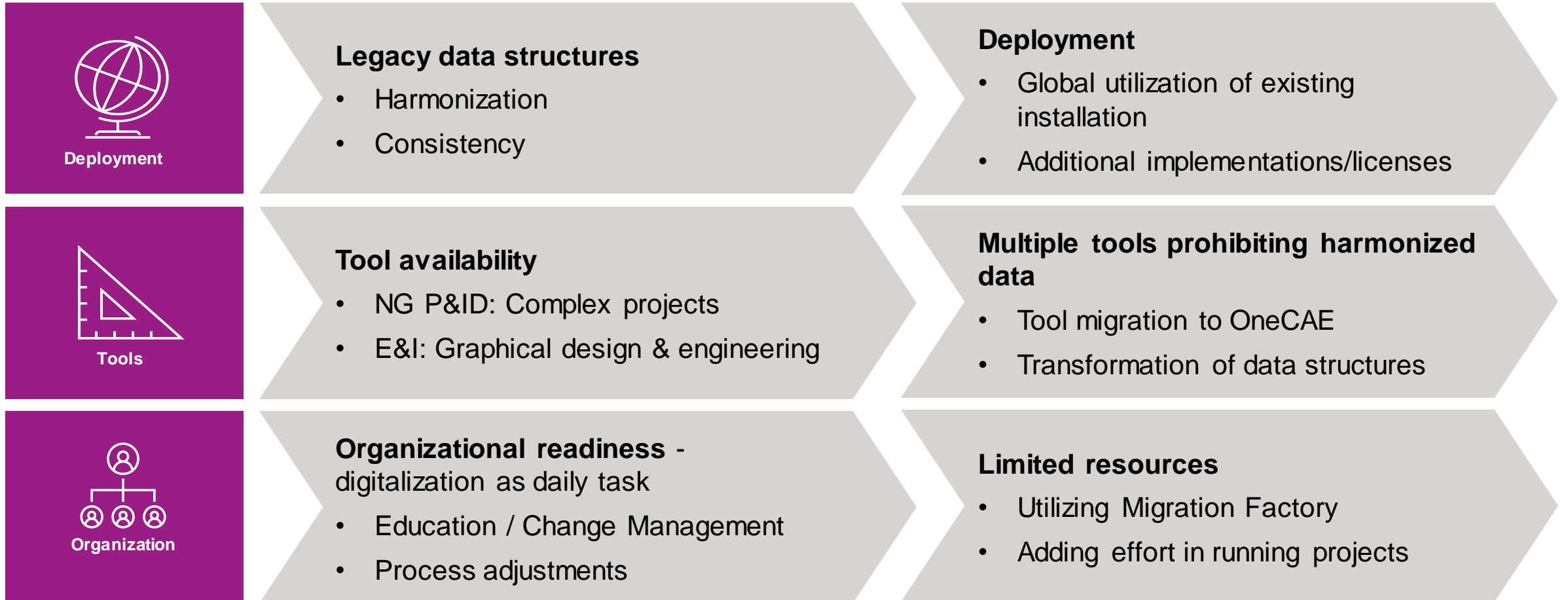
- **Harmonized Data Model**
- Utilization of **AVEVA IE&D/Unified Engineering**:
  - AVEVA Engineering
  - AVEVA Diagrams
  - AVEVA E3D & LFM
  - *AVEVA E&I / NG P&ID*
- Integration of key applications
  - MyFEED
  - Civil, Structural & Architectural
  - DMS & ERP
- **AVEVA Asset Information Manager**



## ... generates for new plants its benefits. Existing plants...



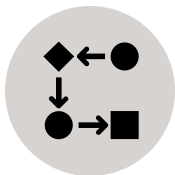
# The first steps are done, but many challenges are ahead





# Asset Lifecycle Data Management:

**Providing all entities (human or digital) with the required asset data to optimize maintenance and operation.**



**Look at data as an asset with an increasing value – each object will become more valuable with each link to another object.**



**Make ALC Data Management and respective data and tool harmonization mandatory for all projects and activities.**



**Make use of the now existing methods and tools whenever possible**

A child in a colorful shirt and jeans stands on a small step ladder, drawing a large rocket ship on a grey concrete wall with white chalk. A small black dog sits on the ground to the left of the ladder, and some chalk is scattered on the ground to the right.

# Data Driven Asset Lifecycle Management is NOT Rocket Science! Thank You!

## Martin Blumoehr

Digital Solutions & Operations  
Head of Asset Lifecycle Operations  
Mobile +49 151 1202 6255  
[martin.blumoehr@evonik.com](mailto:martin.blumoehr@evonik.com)

## Evonik Operations GmbH

Rodenbacher Chaussee 4  
63457 Hanau-Wolfgang  
Germany

## Chad Mossak

Digital Processes  
Digital Solutions Manager  
Mobile +1 251 490 9354  
[chad.mossak@evonik.com](mailto:chad.mossak@evonik.com)

## Evonik Corporation

1650 Lilly Road  
Lafayette, IN 47909  
USA



# Questions?

Please wait for the microphone.  
State your name and company.



# Please remember to...

Navigate to this session in the mobile  
app to complete the survey.



# Thank you!

This presentation may include predictions, estimates, intentions, beliefs and other statements that are or may be construed as being forward-looking. While these forward-looking statements represent our current judgment on what the future holds, they are subject to risks and uncertainties that could result in actual outcomes differing materially from those projected in these statements. No statement contained herein constitutes a commitment by AVEVA to perform any particular action or to deliver any particular product or product features. Readers are cautioned not to place undue reliance on these forward-looking statements, which reflect our opinions only as of the date of this presentation.

The Company shall not be obliged to disclose any revision to these forward-looking statements to reflect events or circumstances occurring after the date on which they are made or to reflect the occurrence of future events.



 [linkedin.com/company/aveva](https://www.linkedin.com/company/aveva)

 [@avevagroup](https://twitter.com/avevagroup)

#### ABOUT AVEVA

AVEVA is a global leader in industrial software, sparking ingenuity to drive responsible use of the world's resources. The company's secure industrial cloud platform and applications enable businesses to harness the power of their information and improve collaboration with customers, suppliers and partners.

Over 20,000 enterprises in over 100 countries rely on AVEVA to help them deliver life's essentials: safe and reliable energy, food, medicines, infrastructure and more. By connecting people with trusted information and AI-enriched insights, AVEVA enables teams to engineer efficiently and optimize operations, driving growth and sustainability.

Named as one of the world's most innovative companies, AVEVA supports customers with open solutions and the expertise of more than 6,400 employees, 5,000 partners and 5,700 certified developers. With operations around the globe, we are headquartered in Cambridge, UK and listed on the London Stock Exchange's FTSE 100.

Learn more at [www.aveva.com](https://www.aveva.com)