

NOVEMBER 2022

Using AVEVA PI Asset Framework and PowerBI to Identify Alarm Management Opportunities

Improving Safety and Productivity

Presented By: Ryan Dube and Fritz Wewers

AVEVA

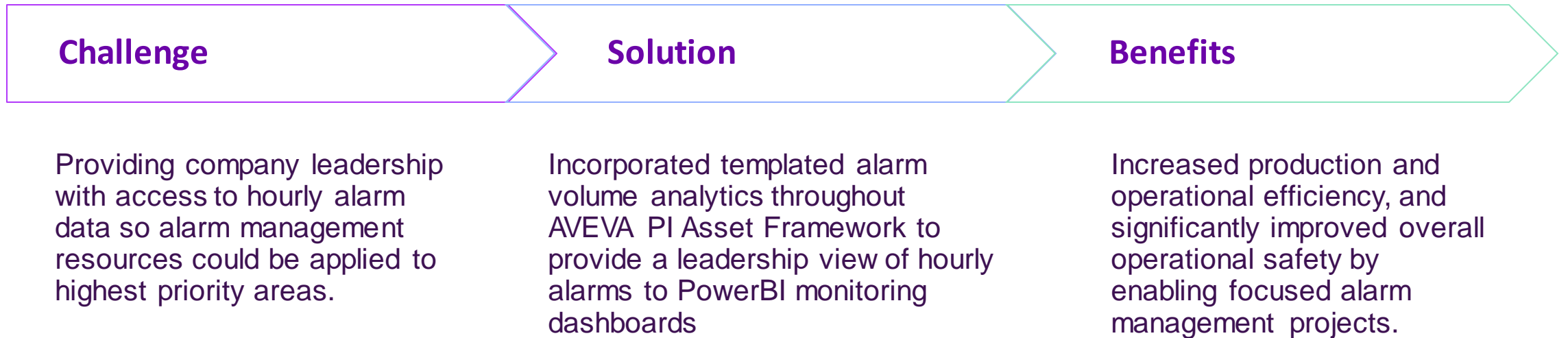
Eastman: A global industry leader

- Fortune 500 specialty materials company with 2021 revenue of ~\$10.5B
- Global manufacturer and marketer of advanced materials and specialty additives
- Operates four business segments
- Global team of ~14,000
- Serving customers in >100 countries



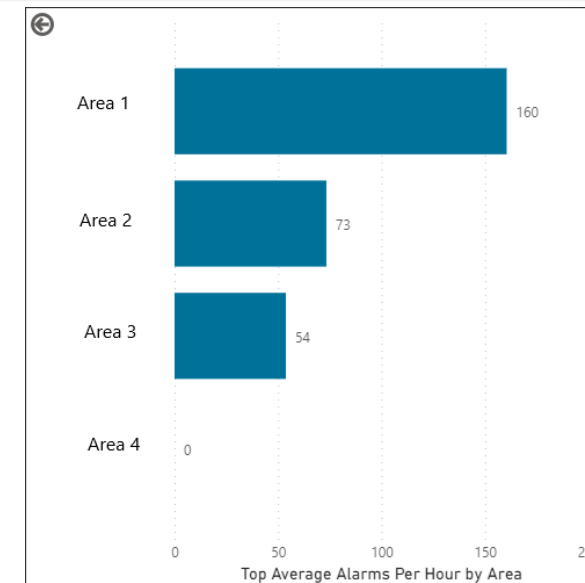
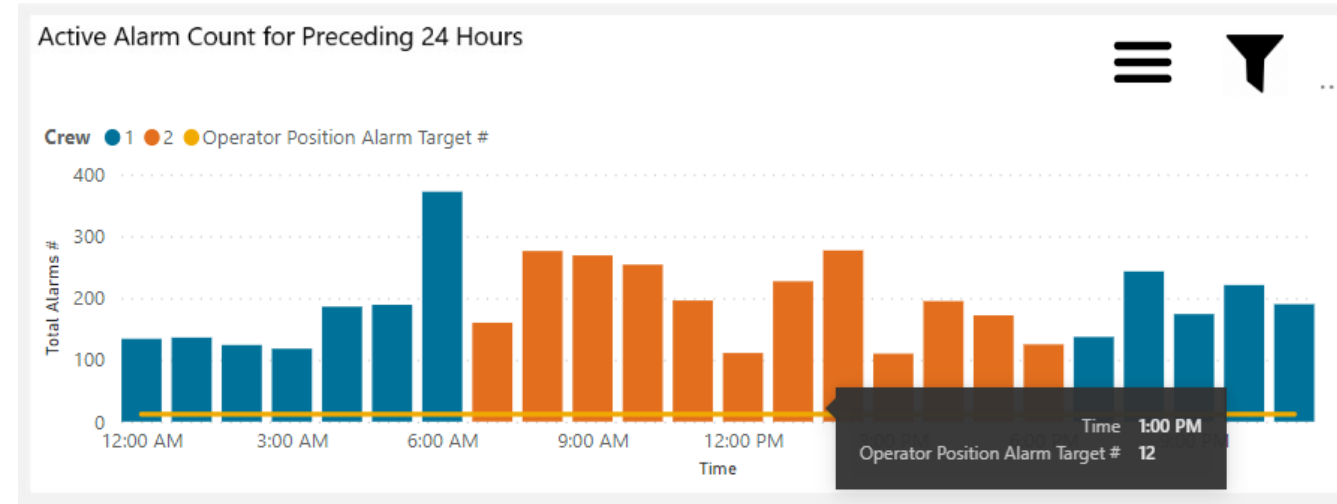
Improving Operational Safety Through Alarm Management

EASTMAN



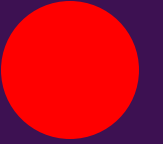
Challenge: Operational Alert Overload in Some Areas

- Operators had a significant volume of DCS alarms with many nuisance or inaccurately configured alarms.
- Some areas and sites had this challenge while others had already established a good management cadence routine.
- Toolset needed to:
 - Monitor company-wide alarm volumes
 - Display actual hourly alarms against company-established manageable hourly alarm guidelines based on number of operators in a control room.
 - Provide the ability to compare alarms-over-manageable-limit by area.



Split Focus Demo: Count Bounces and Remember Pictures

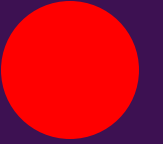
25 Events Per Minute



AVEVA

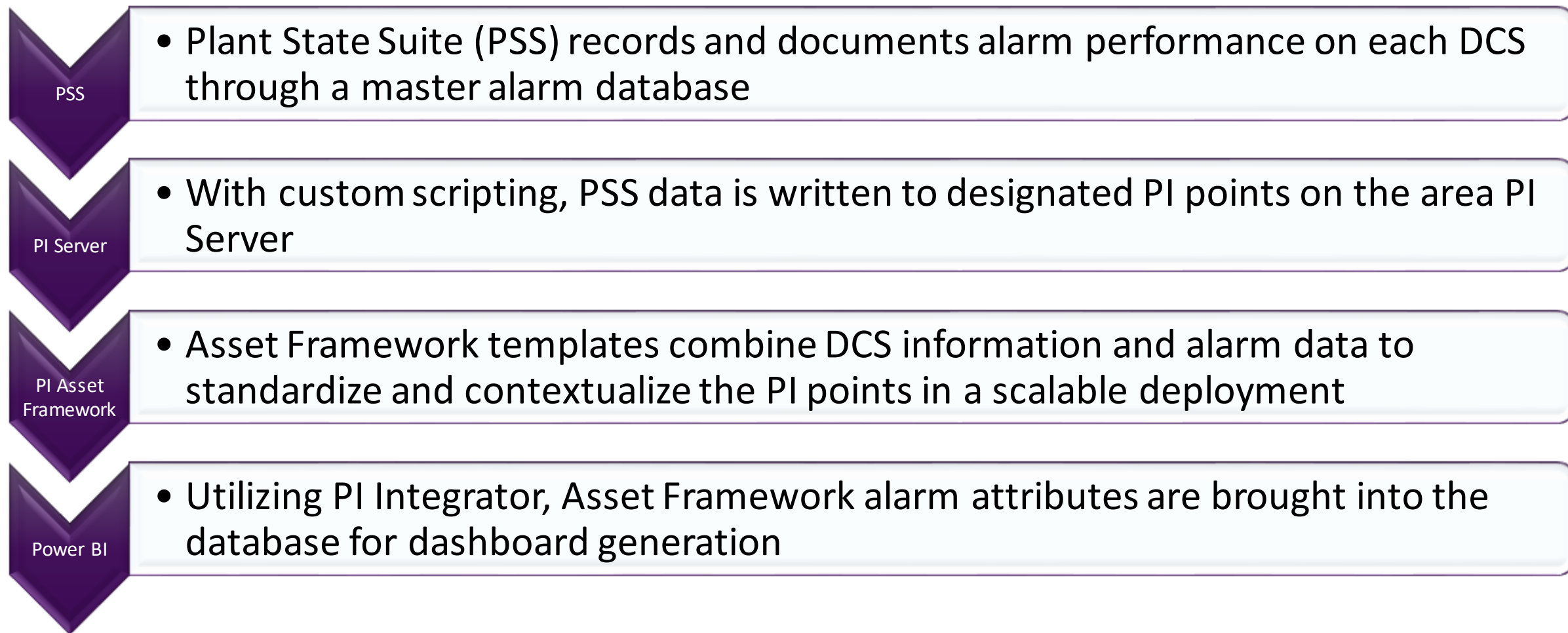
Split Focus Demo: Count Bounces and Remember Pictures

55 Events Per Minute



AVEVA

Utilizing the AVEVA Portfolio for Data Management



Implementation details from PI Asset Framework Templates to drive standardization and scalability

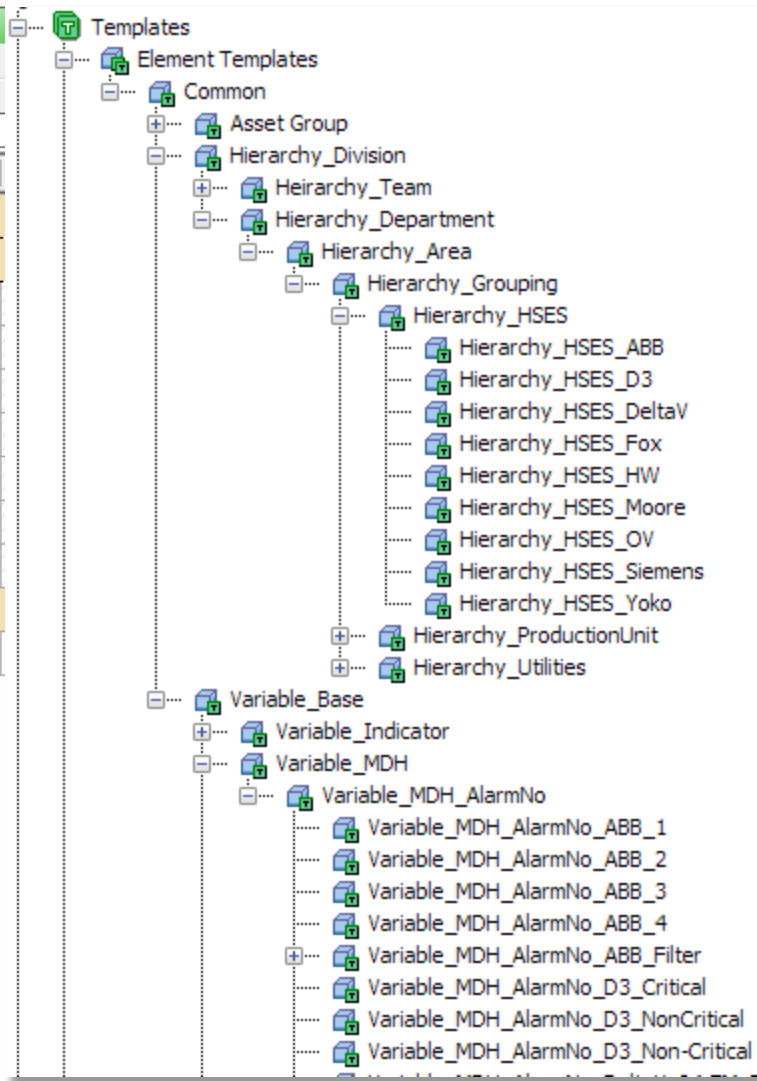
Variable_MDH_AlarmNo_ABB_1

General Attribute Templates Ports Analysis Templates Notification Rule Templates

Filter

	Name	Description
+	Template: Variable_Base	
+	Template: Variable_MDH_AlarmNo	
	Crew	
	DCS Name	
	DCS Type	
	PSS Server	
	Severity	
	Value	Number of Alarms from PSS Script
	Tagname	
+	Template: Variable_MDH_AlarmNo_ABB_1	
	Severity	

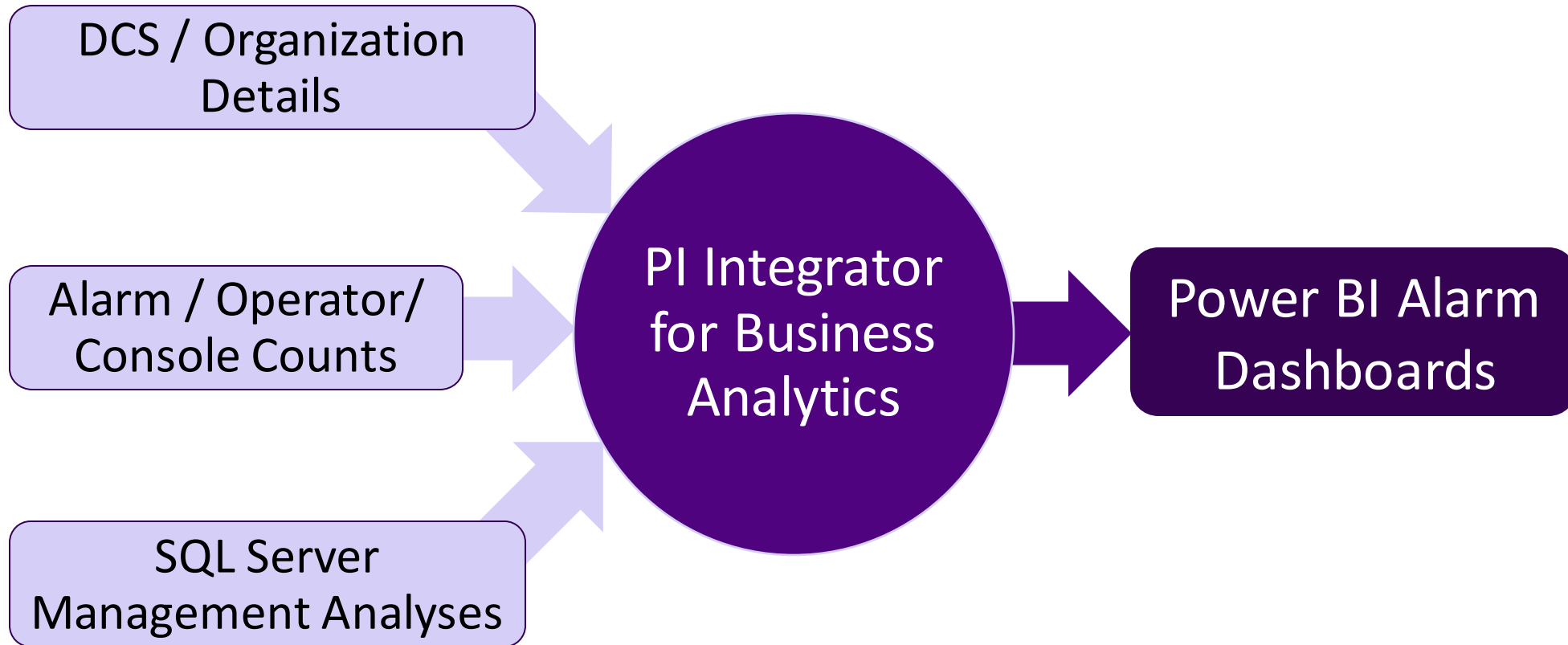
Alarm Value attribute utilizes substitution parameters and DCS attributes to connect to a specific PI point for an accurate and live alarm count



Hierarchy templates contain operator counts, current crew, and organizational information

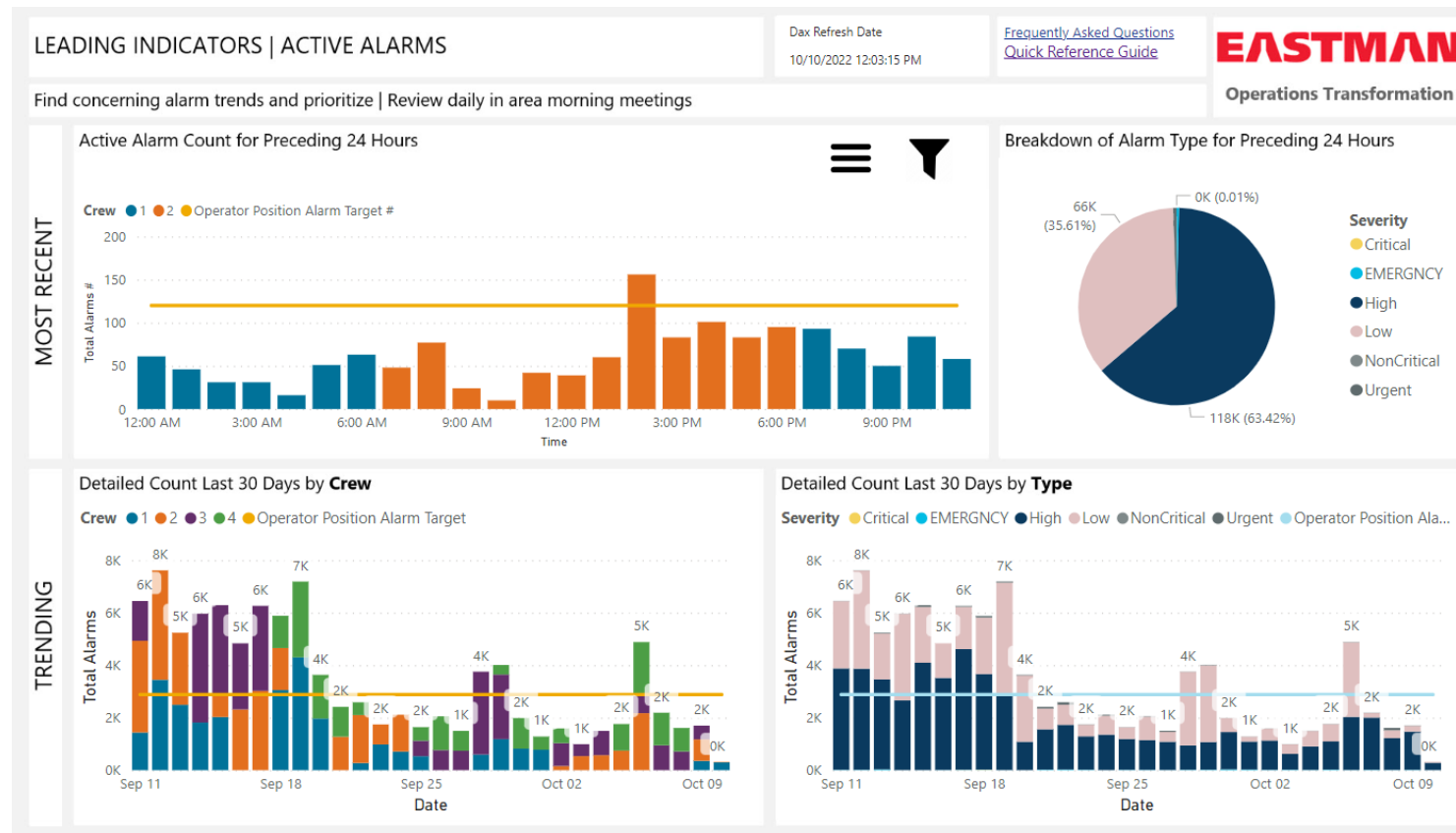
Variable templates contain PI point substitution parameters and alarm counts

Enriching Alarm Data as it flows through PI Integrator to Power BI



Enabling Alarm Rationalization with Data

Using data to drive alarm rationalization projects for areas with the greatest need for alarm management lets the company focus resources where it will have the most dramatic impact on overall operational safety and productivity.





Ryan Dube

Digital Transformation & Analytics Leader

- Eastman Chemical
- Ryane.dube@eastman.com



Fritz Wewers

Digital Analytics Leader

- Eastman Chemical
- fwewers@eastman.com

Questions?

Please wait for the microphone.
State your name and company.



Please remember to...


Navigate to this session in the mobile
app to complete the survey.



Thank you!

This presentation may include predictions, estimates, intentions, beliefs and other statements that are or may be construed as being forward-looking. While these forward-looking statements represent our current judgment on what the future holds, they are subject to risks and uncertainties that could result in actual outcomes differing materially from those projected in these statements. No statement contained herein constitutes a commitment by AVEVA to perform any particular action or to deliver any particular product or product features. Readers are cautioned not to place undue reliance on these forward-looking statements, which reflect our opinions only as of the date of this presentation.

The Company shall not be obliged to disclose any revision to these forward-looking statements to reflect events or circumstances occurring after the date on which they are made or to reflect the occurrence of future events.

 [linkedin.com/company/aveva](https://www.linkedin.com/company/aveva)

 [@avevagroup](https://twitter.com/avevagroup)

ABOUT AVEVA

AVEVA is a global leader in industrial software, sparking ingenuity to drive responsible use of the world's resources. The company's secure industrial cloud platform and applications enable businesses to harness the power of their information and improve collaboration with customers, suppliers and partners.

Over 20,000 enterprises in over 100 countries rely on AVEVA to help them deliver life's essentials: safe and reliable energy, food, medicines, infrastructure and more. By connecting people with trusted information and AI-enriched insights, AVEVA enables teams to engineer efficiently and optimize operations, driving growth and sustainability.

Named as one of the world's most innovative companies, AVEVA supports customers with open solutions and the expertise of more than 6,400 employees, 5,000 partners and 5,700 certified developers. With operations around the globe, we are headquartered in Cambridge, UK and listed on the London Stock Exchange's FTSE 100.

Learn more at www.aveva.com