

The background of the slide is a blue-tinted photograph of an automotive assembly line. Several robotic arms are visible, positioned around a car chassis that is moving along a conveyor belt. The scene is industrial and modern, with various mechanical components and wiring visible on the robots. The overall color scheme is a monochromatic blue, with white text overlaid.

**We secure  
the world's  
automation**



# Lightning Talk

Vendor-Agnostic Version  
Control and Backup: NextGen  
OT Asset Management

Alexander Seibel  
Director of Global Channels  
Auvesy-MDT

---

# Agenda

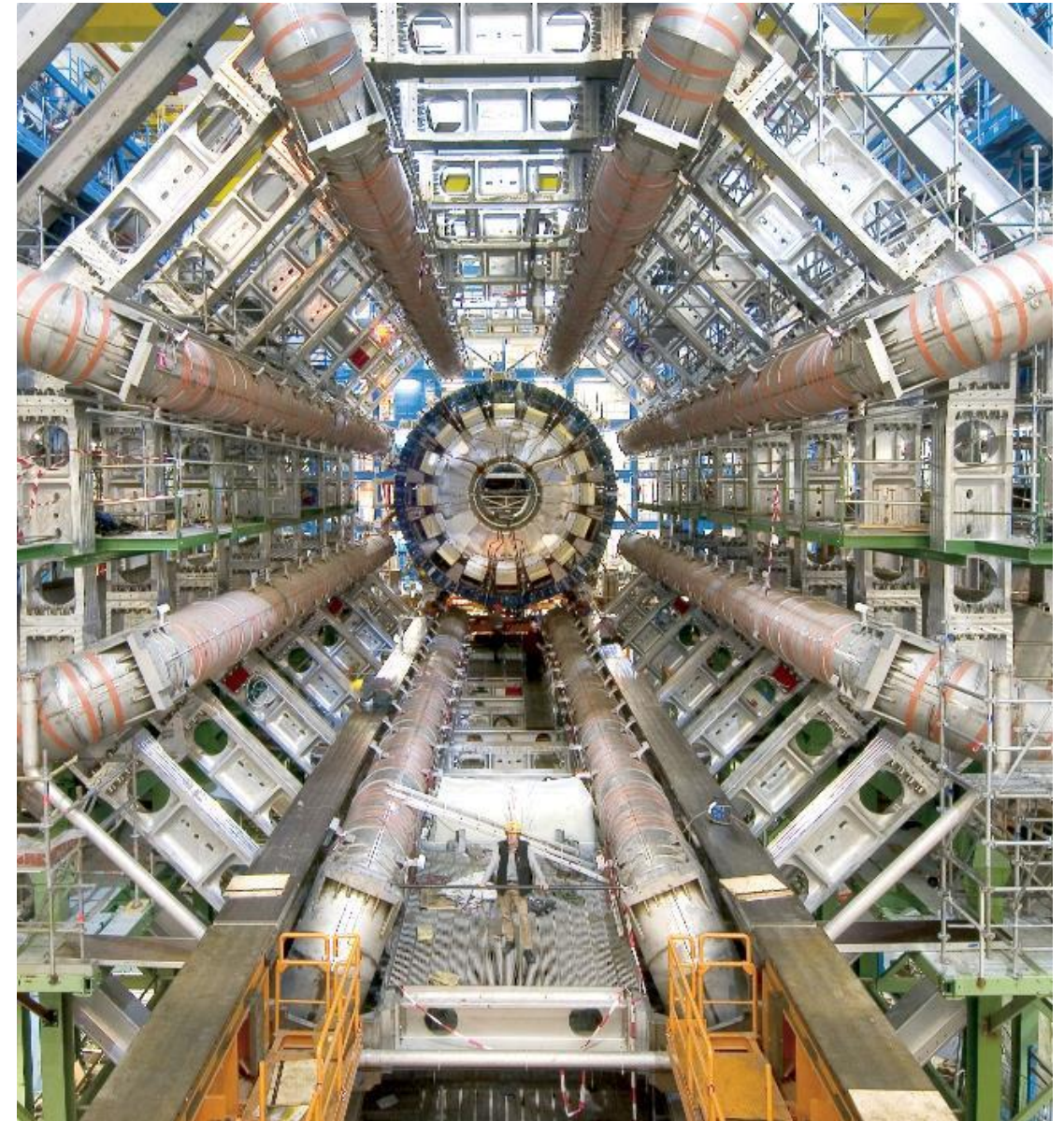
- 01 | Industry Landscape
- 02 | Customer Testimonial
- 04 | Cohesive Change Management
- 03 | Protect Your Back(up)

# Industry Landscape



*We have made significant gains in certainty and quality when it comes to data availability in areas where many programmable logic controllers are in use. Implementing versiondog has put us on a new quality level.*

Jerónimo Ortolá Vidal, Automation engineer at the Industrial Controls and Safety systems Group of the Beams Department at CERN



## The world of automated production is undergoing drastic and rapid changes



### **Digitalization towards smart, connected factories**

90% of production leaders expect more opportunities than risks from digitalization<sup>1</sup>



### **Product individualization and small batch sizes**

98% of production companies anticipate that a fast reaction and change-over time will be critical to their success<sup>2</sup>



### **Market consolidation and heterogeneous environments**

M&A in the industrial manufacturing and automotive sectors are at a record high and are expected to remain strong<sup>3</sup>

Sources:

1) PWC study, Digital Factories 2020 ; 2) Fraunhofer Institute Study, "Produktionsarbeit der Zukunft – Industrie 4.0";

3) PWC, "Global M&A Trends in Industrial Manufacturing and Automotive Sectors: 2022 outlook"

# The Fourth Industrial Revolution

## Industry 4.0



The change to modern technology & industries due to increasing [interconnectivity](#) and [smart automation](#)



## Wolters brewery places its trust in our solution to ensure maximum uptime and safety

*“Cyberattacks are a real danger for us. The ability to trace all incidences of data access, including the timestamp, was what led to the decision to integrate [your solution] <sup>1</sup>.”*

**Matthias Teitge**  
Head of Plant Management  
Hofbrauhaus Wolters brewery

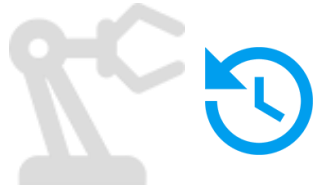
Sources:

1) Quote given on versiondog, the former software solution from AUVESY GmbH and logical predecessor of octoplant



# Cohesive Change Management

# Success in automated production requires mastering key challenges



## Reduce downtime

82% of companies experience unplanned downtime<sup>1</sup>, with a huge impact!  
Average duration: 4 hours<sup>1</sup>  
Average costs: 2 MUSD<sup>1</sup>



## Safeguard assets

Effects of cyberattacks became more severe.  
Downtime from ransomware attacks increased by 40% in 2022<sup>2</sup> alone.



## Effective cooperation between OT and IT

IT and OT worlds are historically poorly connected. E.g.: Experts estimate that only 10% of MES systems are connected to the OT, reducing ability to successfully steer production.

**\*Vendor independent version control and backup**

Sources:

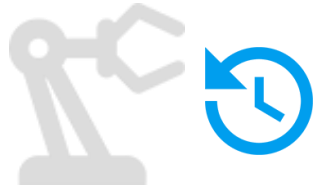
1) Vanson Bourne „Cost, Causes and Consequences of Unplanned Downtime“ 2018

2) Statista

# Protect your back(up)



# Security, data recovery, device configuration, and operational efficiencies



## Security

Take proactive solutions to detect cybersecurity threats and decrease downtime



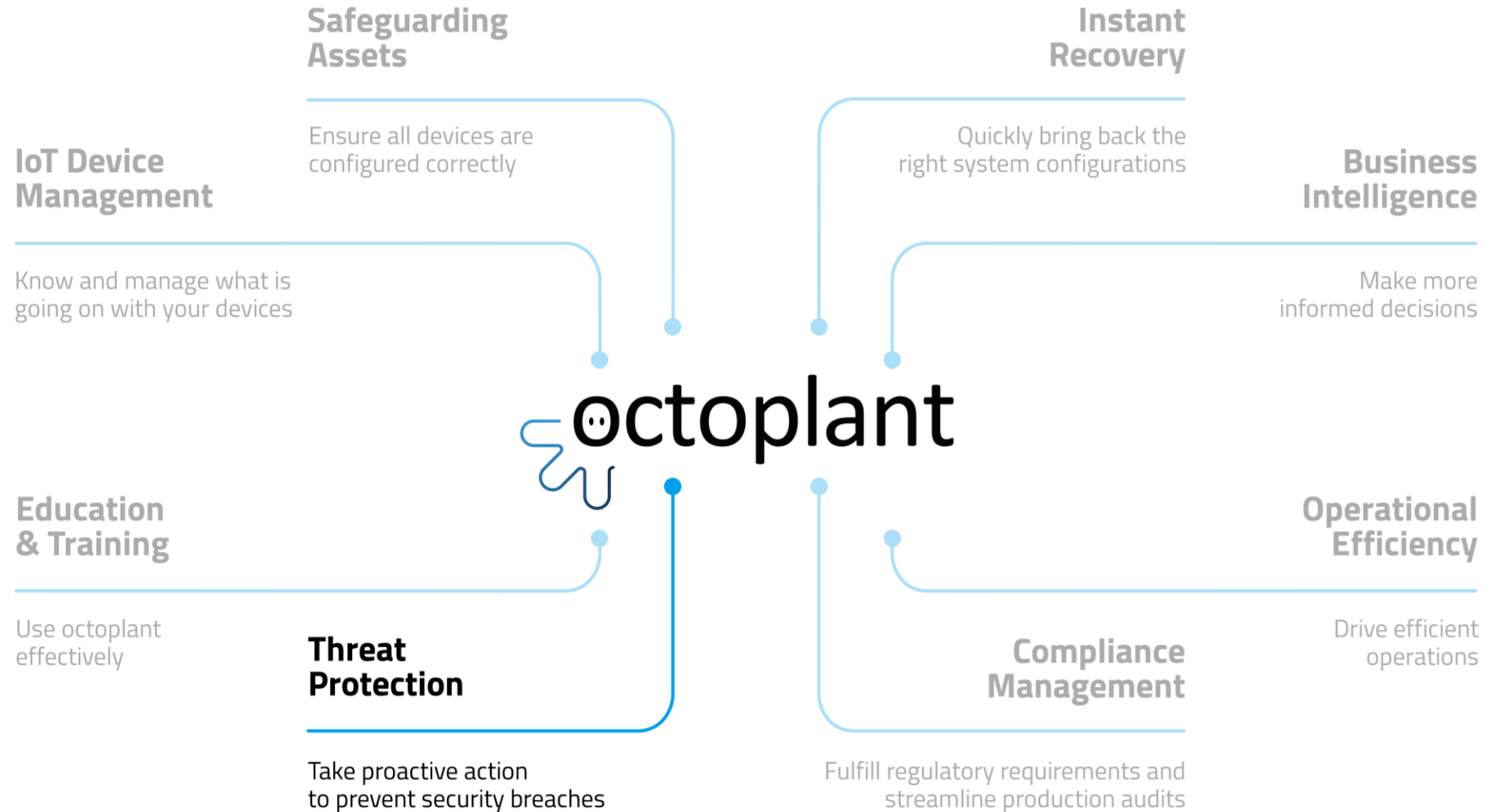
## Recovery

Recover in any case in a short manner

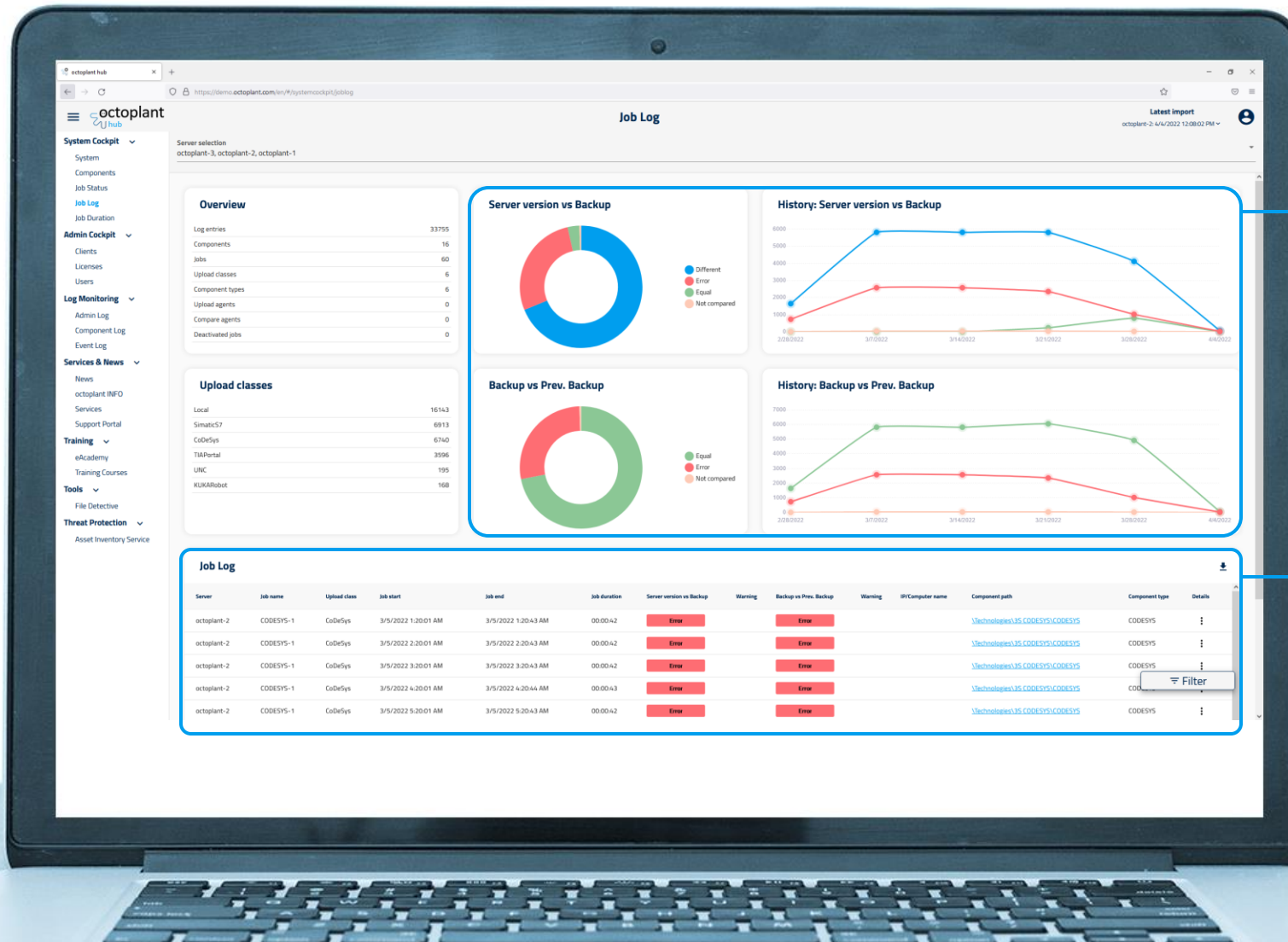


## Productivity

Get back up and running in a short amount of time



# Compare insights on usage across multiple instances



Aggregated information helps to get a global overview

Detailed information allows for drill downs and further investigation or export data



# ASSET INVENTORY SERVICE AT A GLANCE

octoplant hub +  
Claroty CTD



## Overview, management, and reporting of your OT Assets

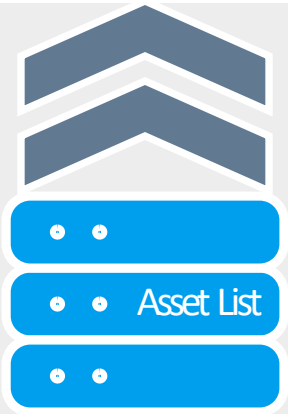
Integration and consolidation asset list, versiondog, and other data sources



Asset Inventory Service

CLAROTY

Asset data enriched with  
information from octoplant



### Option: Network Scan

Passive Scan

Active Scan

Populate identified assets



octoplant server

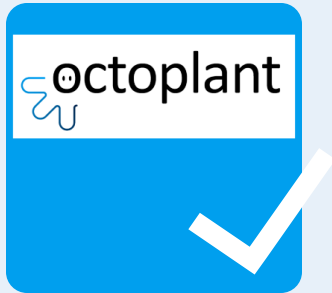


octoplant change

Automatically updated  
and enriched on the asset

Import new  
identified assets

Expands disaster  
recovery coverage



## Speaker Info

If you have any questions, please contact us!

# Thank you!



## Alexander Seibel

Director of Global Channels

[alexander.seibel@auvesy-mdt.com](mailto:alexander.seibel@auvesy-mdt.com)

[linkedin.com/in/seibel-alexander/](https://linkedin.com/in/seibel-alexander/)