

NOVEMBER 16TH, 2022

Real Time Fleet Analytics with AVEVA Data Hub

Presented by; Vince Barbarie IDS LLC & Michail Clutter Casne Engineering Inc

AVEVA

About IPD, IDS & Casne

Industrial Parts Depot, LLC

- IPD is a leading innovator of replacement heavy duty engine parts for diesel and natural gas equipment
- Based near Los Angeles, CA, IPD has a worldwide presence in every continent except Antarctica
- Privately-held, family-owned business since 1955



Industrial Digital Solutions, LLC

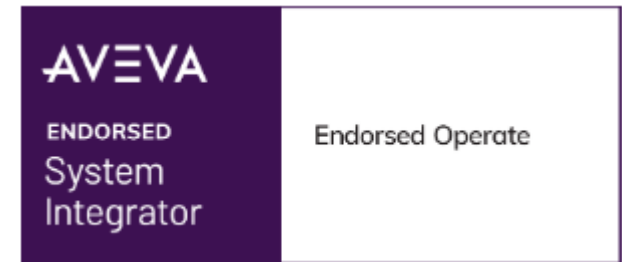
- IPD formed IDS in 2021 to simply & intelligently connect assets with owners, operators, managers, and service channels.





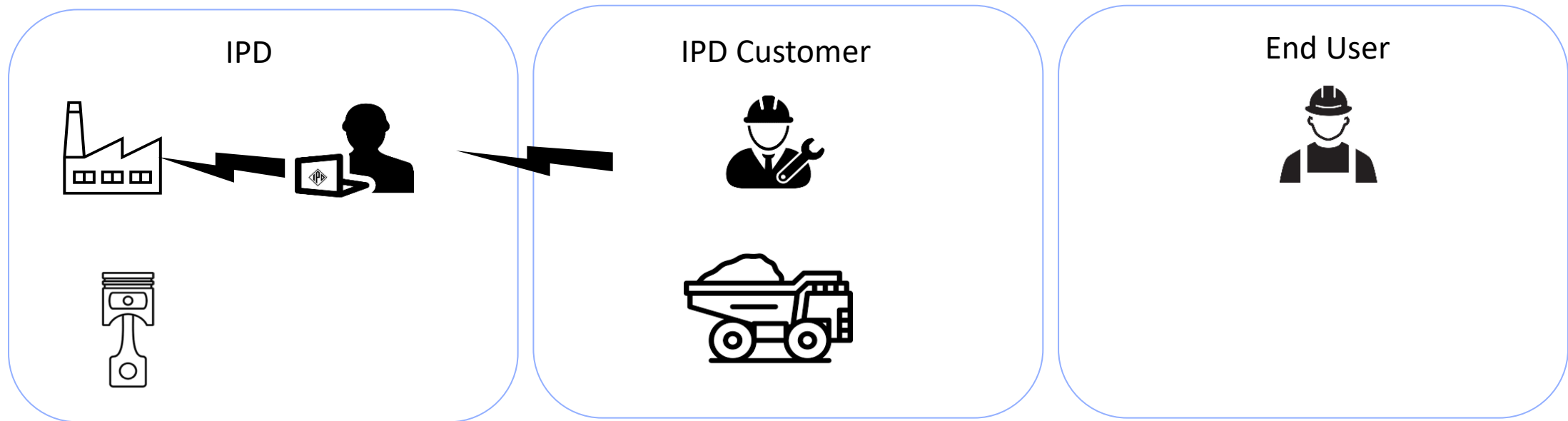
- Operating globally from Bellevue, WA USA. Established in 1979
- Full-service engineering, systems integration, and technology services.
- AVEVA Endorsed Systems Integrator (AVEVA PI systems) since 2006

- Oil and Gas
- Power Generation
- Water/Wastewater
- Manufacturing
- Data Centers
- Critical Facilities
- Transportation



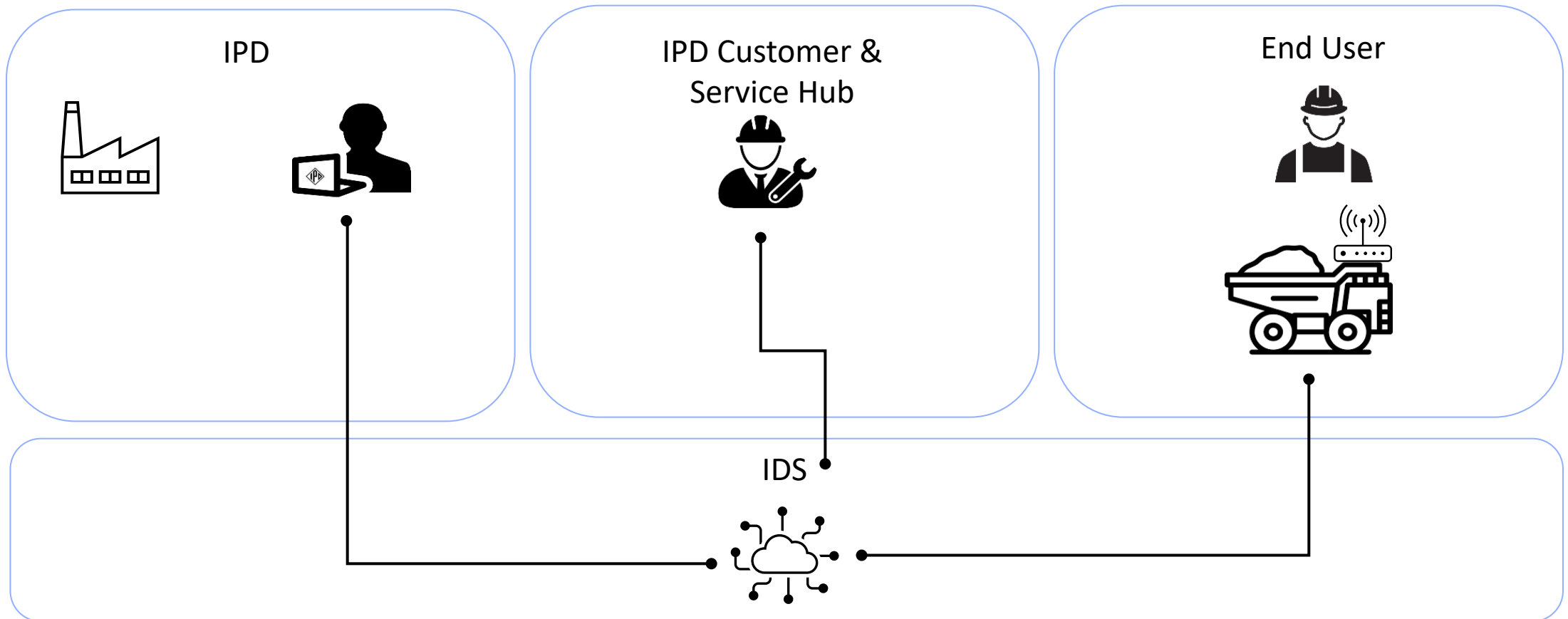
IPD Since 1955

Traditional parts manufacturing and distribution



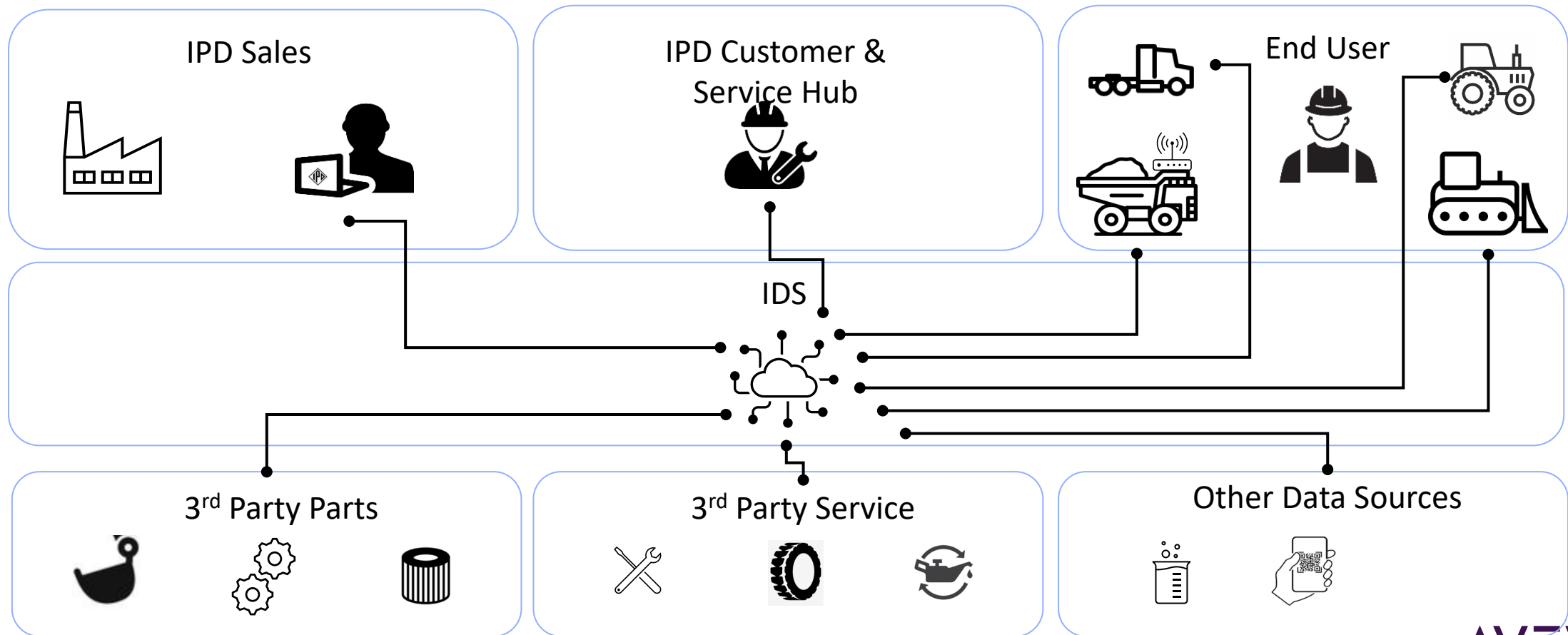
IDS Brings In New Opportunities

Following our parts to the last mile



IDS MachineRx Platform Future

What does the future look like?



What Problem Are We Solving?

- Finding the “Goldilocks” solution for the small-mid sized fleet market

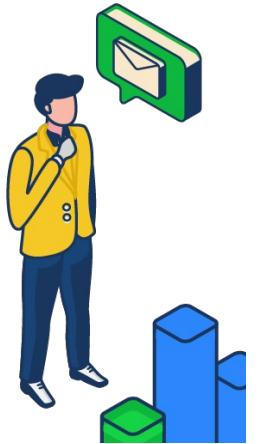
OEM Solutions

Complex integrations
❌ Difficult to understand
Focused on one-make fleets
Optimized for large fleets



Current Aftermarket Solutions

Generic fault codes
❌ No engine/machine/vehicle expertise
On highway truck location tracking
No service channel
Raw data difficult to understand



IDS Solution

Simple integration
✅ Integrated service channel
All makes all models
Utilize rebuilders and trusted partners

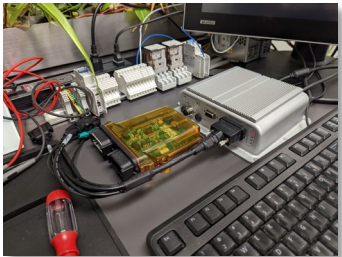


Business challenge addressed

- **Large, underserved market – small to medium-size fleets**
 - Small to medium-sized truck fleets in USA represent 50% of total market
 - Off-highway CAT alone has >3.5M units in the field
 - IPD is uniquely positioned to access this fragmented market
- **Provides a solution previously only available to large fleets**
 - Existing affordable products deliver an incomplete solution
 - No “industry standard” exists
- **Leverages IPD to create new recurring revenue streams**
 - Not just existing but new customers (OE-agnostic)
- **How does IPD and IDS deliver this next tech product?**
 - IDS partners with Casne to deliver world class solution



System Architecture Overview (10,000 ft) **MACHINE⁵RX**



MRX-LINK



CLOUD DATA



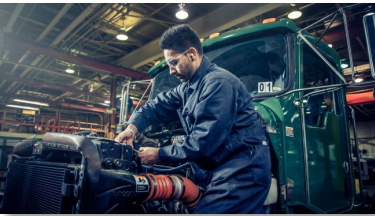
WEB PORTAL



OPERATOR



OWNER/MANAGER

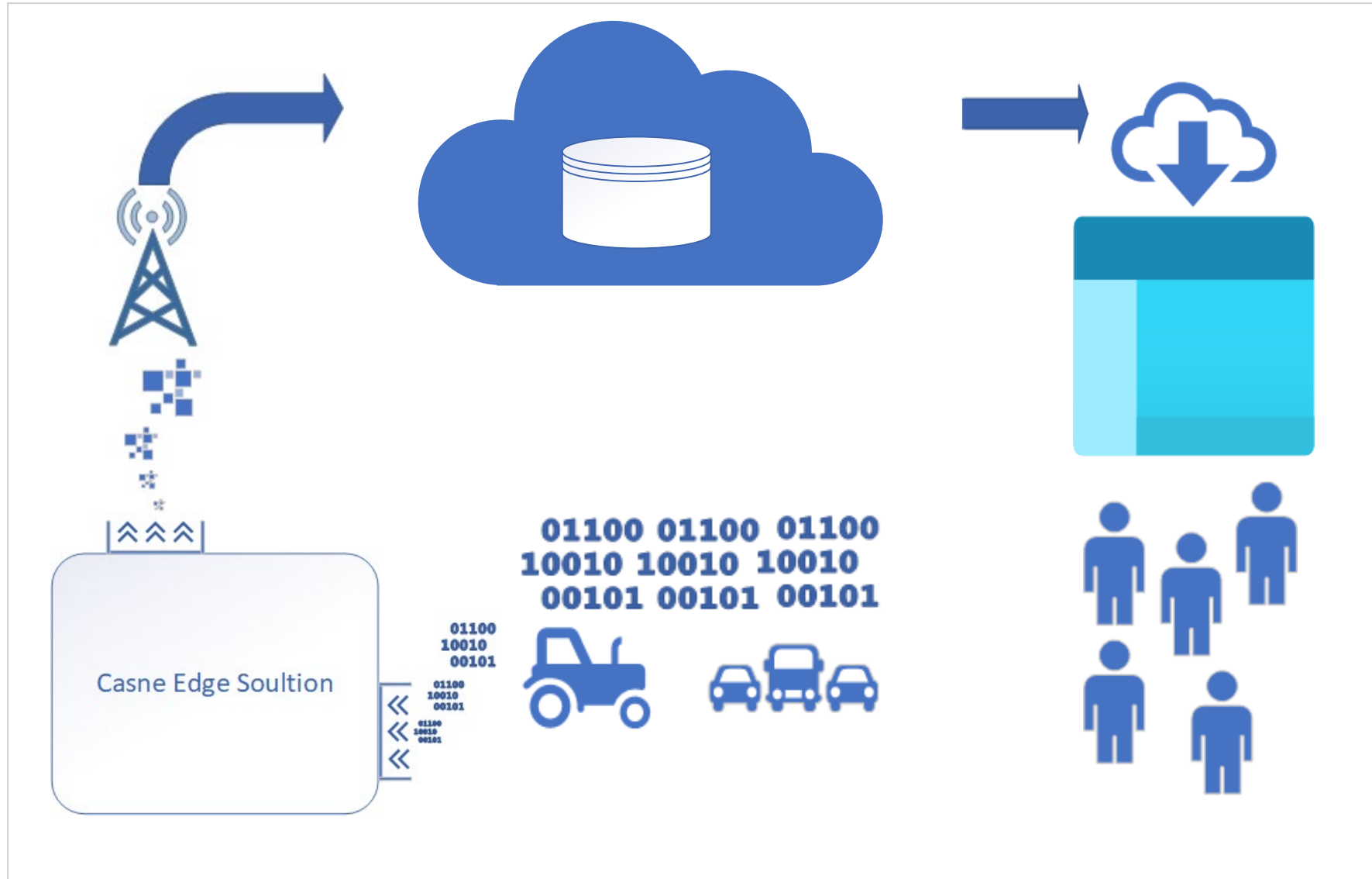


SERVICE PROVIDER

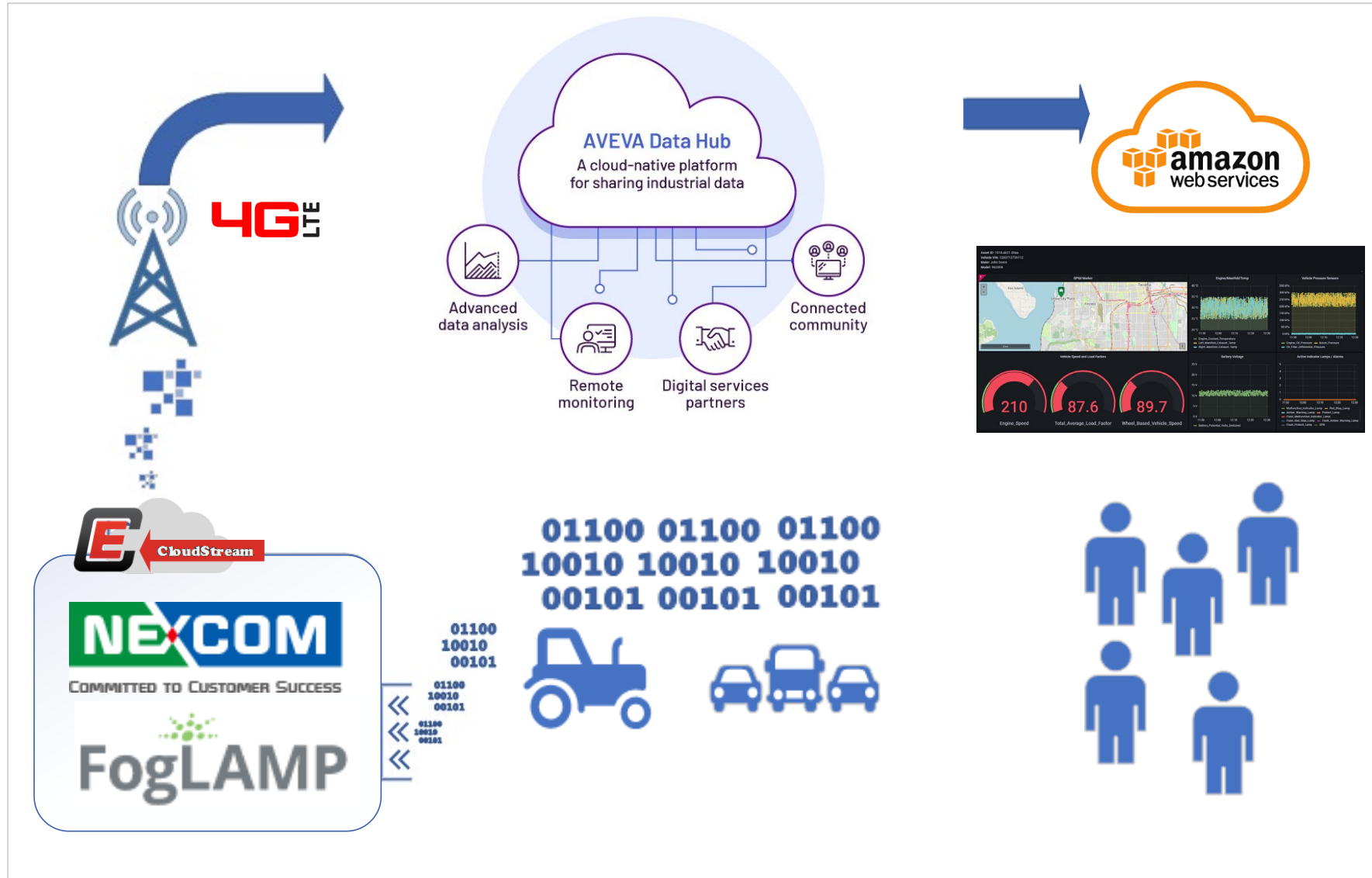
cdi
fault code
sae^{edge}
j1708 lte
j1939
cloud

AVEVA

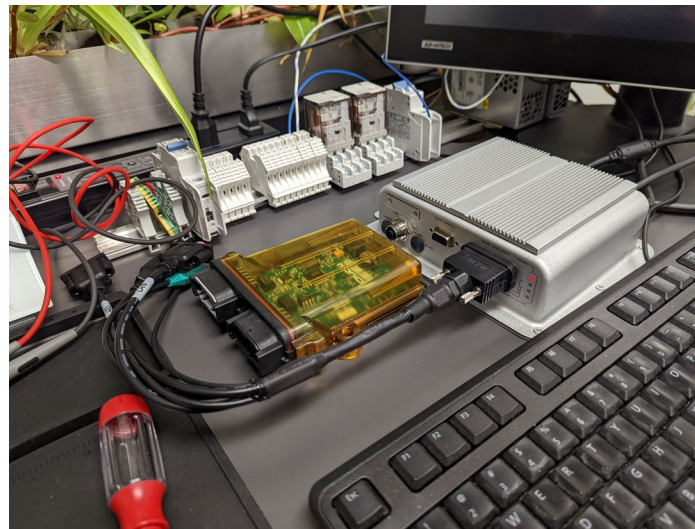
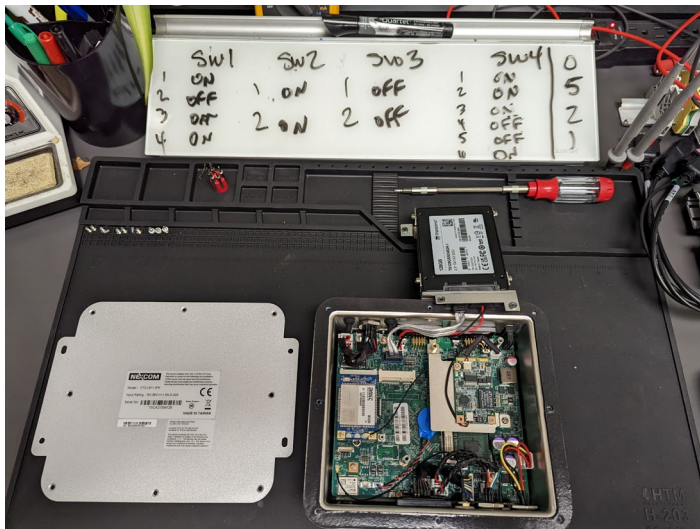
Concept Design



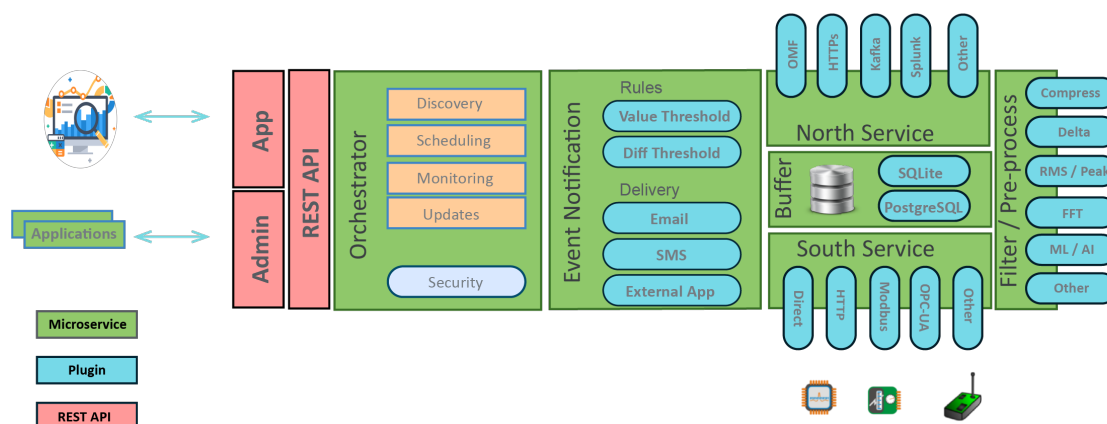
Physical Design



Putting it all together.....



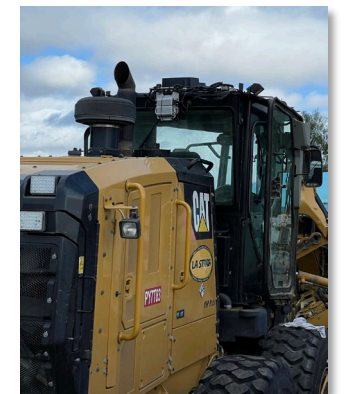
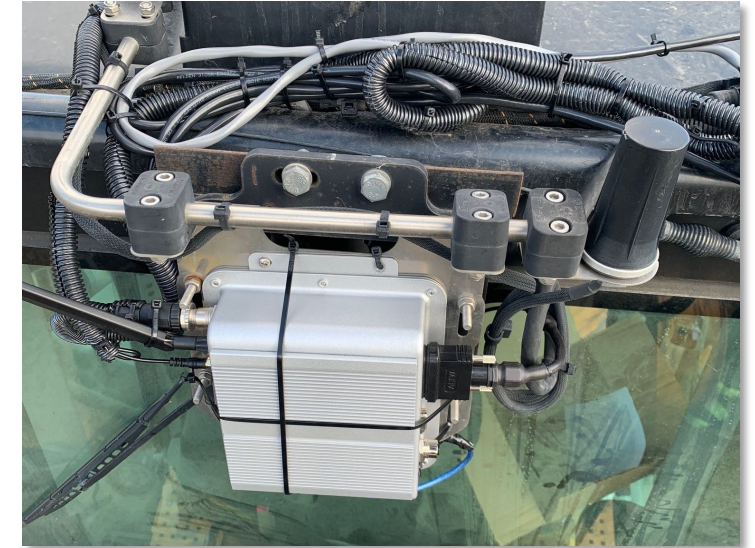
FOGLAMP ARCHITECTURE



MachineRx Alpha Units

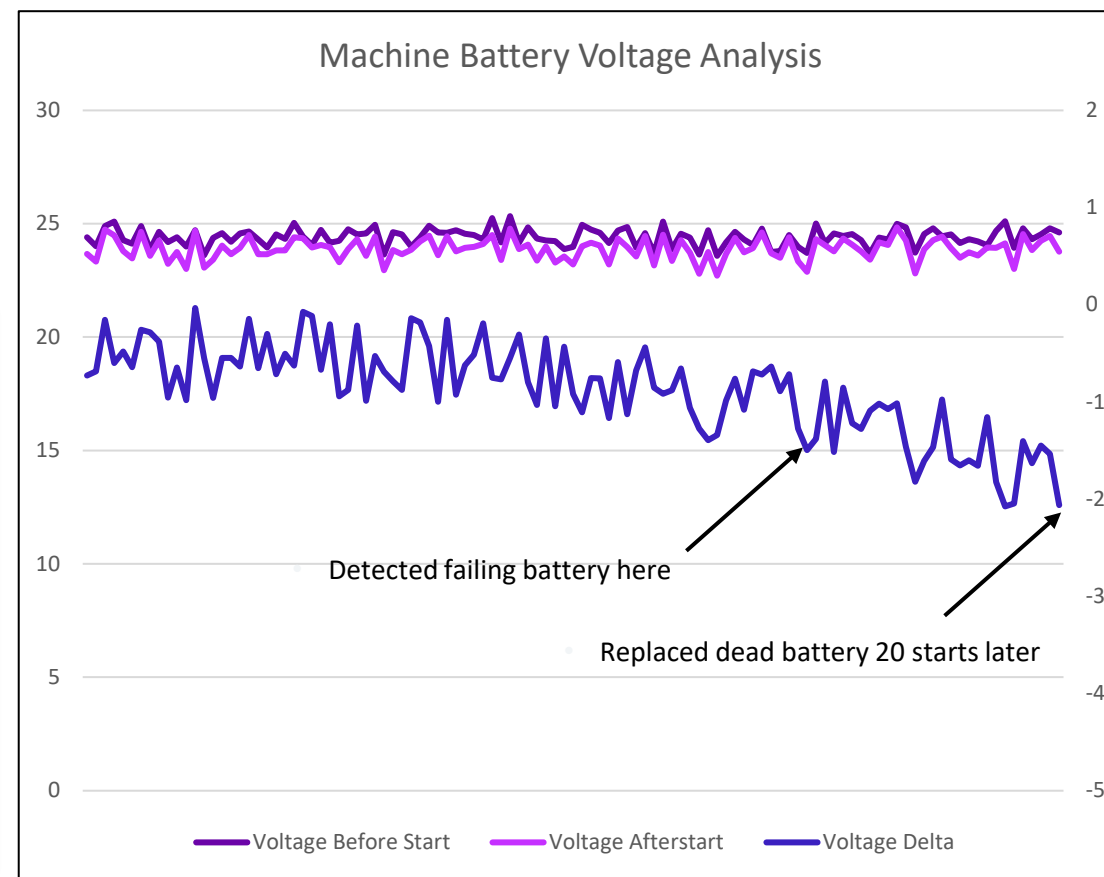
Customer Profile:

- Privately owned construction fleet
- Located in Southern California
- Fleet moves approx 100 mile range
- 98 units
- 55 on-highway trucks
- 43 off-highway machines
- Mixed fleet makes/models
- Primary concerns:
 - Fuel cost
 - Downtime
 - Productivity



Impact: Creating actions from data

- Putting data into the cloud is one thing
- Making useful conclusions is another
- Alpha units in the field since Jan 2022



Reduce Fuel Costs -- Increase Productivity -- Reduce Downtime

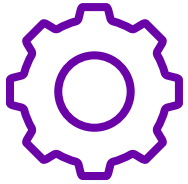
Potential Savings Impact

Reduced fuel costs

- 5% reduction in fuel used (reduced idle time, + fuel system optimization) equals \$33/day savings or **\$670/month per asset**
- Decreased downtime
 - Unplanned downtime equals a loss of \$5k per hour and 25% reduction in downtime equals savings of **\$335/month per asset**
- Increased productivity
 - 2.5% increase in productivity in additional work done equals additional **\$415/month per asset**



Real Time Fleet Analytics with Aveva Data Hub



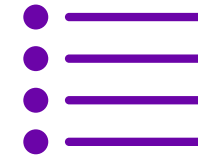
Challenge

- Providing state-of-the-art real-time monitoring and analytics capabilities for small to mid-sized fleets. Digital transformation of old school machinery.



Solution

- Deployed ruggedized Intel based edge solution to push data to the AVEVA Data Hub where it is centralized and sent to visualization platform for end user.



Benefits

- Increased productivity, reduced downtime, decrease theft, and reduced fuel costs for used assets in the transportation, equipment, construction, and mining markets.



T. Vincent Barbarie

Chief Technology Officer

- Industrial Digital Solutions
- vbarbarie@idsrx.com



Michail Clutter

Technical Program Manager

- Casne Engineering
- Michail.clutter@casne.com

Questions?

Please wait for the microphone.
State your name and company.



Please remember to...


Navigate to this session in the mobile app to complete the survey.




Thank you!

This presentation may include predictions, estimates, intentions, beliefs and other statements that are or may be construed as being forward-looking. While these forward-looking statements represent our current judgment on what the future holds, they are subject to risks and uncertainties that could result in actual outcomes differing materially from those projected in these statements. No statement contained herein constitutes a commitment by AVEVA to perform any particular action or to deliver any particular product or product features. Readers are cautioned not to place undue reliance on these forward-looking statements, which reflect our opinions only as of the date of this presentation.

The Company shall not be obliged to disclose any revision to these forward-looking statements to reflect events or circumstances occurring after the date on which they are made or to reflect the occurrence of future events.

 [linkedin.com/company/aveva](https://www.linkedin.com/company/aveva)

 [@avevagroup](https://twitter.com/avevagroup)

ABOUT AVEVA

AVEVA is a global leader in industrial software, driving digital transformation and sustainability. By connecting the power of information and artificial intelligence with human insight, AVEVA enables teams to use their data to unlock new value. We call this Performance Intelligence. AVEVA's comprehensive portfolio enables more than 20,000 industrial enterprises to engineer smarter, operate better and drive sustainable efficiency. AVEVA supports customers through a trusted ecosystem that includes 5,500 partners and 5,700 certified developers around the world. The company is headquartered in Cambridge, UK, with over 6,500 employees and 90 offices in over 40 countries.

Learn more at www.aveva.com