

NOVEMBER 2022

Managing Brownfield Plants

K+S Potash Canada

Change Management

Engineering Systems Administrator
Orlando Amaral



K+S Potash Canada

AVEVA

“The Digital Engineer will be a person with knowledge and skill in the use of engineering and digital technology to enable major process improvements and performance increases in both physical and business operations ”

Ducth Holland & Jim Crompton

K+S Potash Canada

Who we are

- K+S Potash Canada (KSPC) operates a potash solution mine near Bethune, Saskatchewan (SK), with a head office in Saskatoon, SK and export operations in Port Moody, British Columbia (BC).
- KSPC is part of the K+S Group (based in Germany) which has been mining and processing potash and other raw minerals for over 125 years.



K+S Potash Canada

AVEVA

K+S Potash Canada

What we do

- Committed to being a good corporate citizen and neighbour, enriching lives sustainably
- Invest over \$1.5 million annually into the communities where our employees live and work
- Work to ensure that people around the world have the product they need for sustainable food production.

Our vision is to become a world-class potash producer that sustainably helps feed the growing population.



K+S Potash Canada

AVEVA

Where we started

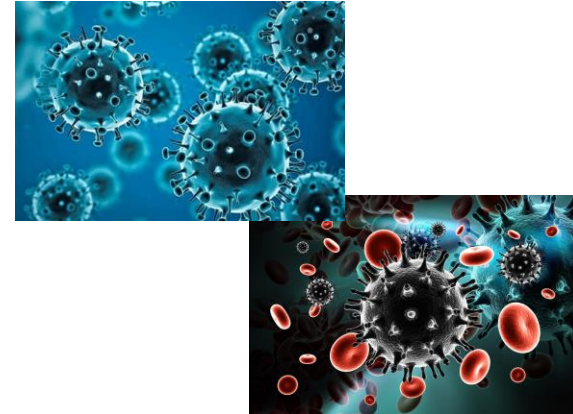
Access to information:

- How much time do we spend looking for information to do our jobs?



Unforeseen challenges:

- COVID19 pandemic



Business challenges



K+S Potash Canada

- Evaluate CAD tool to be used
- Upgrade tools
- Centralize Eng./Design information
- On-board 3rd parties
- **Develop change management workflow**



Remote Design Environment – Cloud Env.

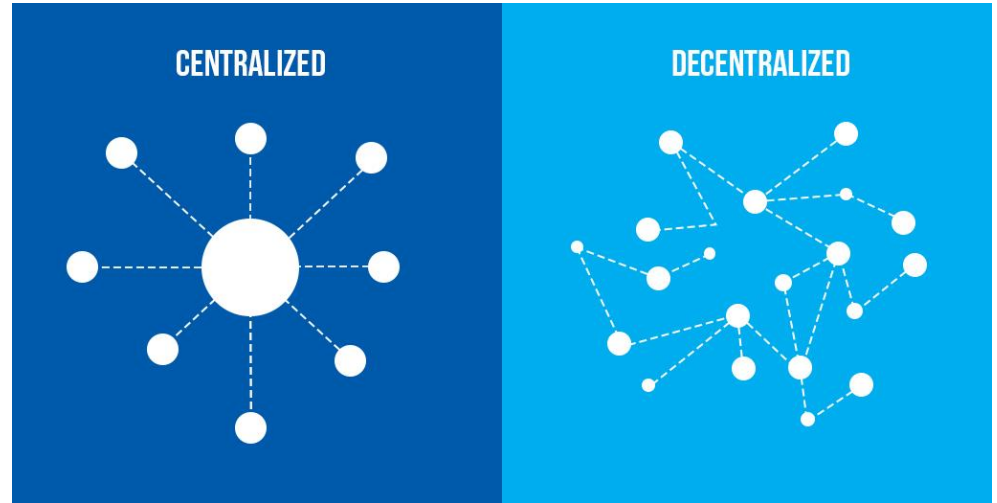
Project Automation

- AVEVA Integrated Engineering & Design (AVEVA IE&D)
 - Will boost project efficiency by helping standardize execution, reducing project cost.
 - Accessible data is the heart of Project Management



Benefits

- Centralized system
- Simple to manage
 - Software updates
 - User management
- Cost effective
 - Scalability of resources
 - Less labour intensive



Challenge

- Onboard 3rd parties, access to Eng./Design information;
- Pressure to start new ramp up projects;
- **Culture change.**

Solution

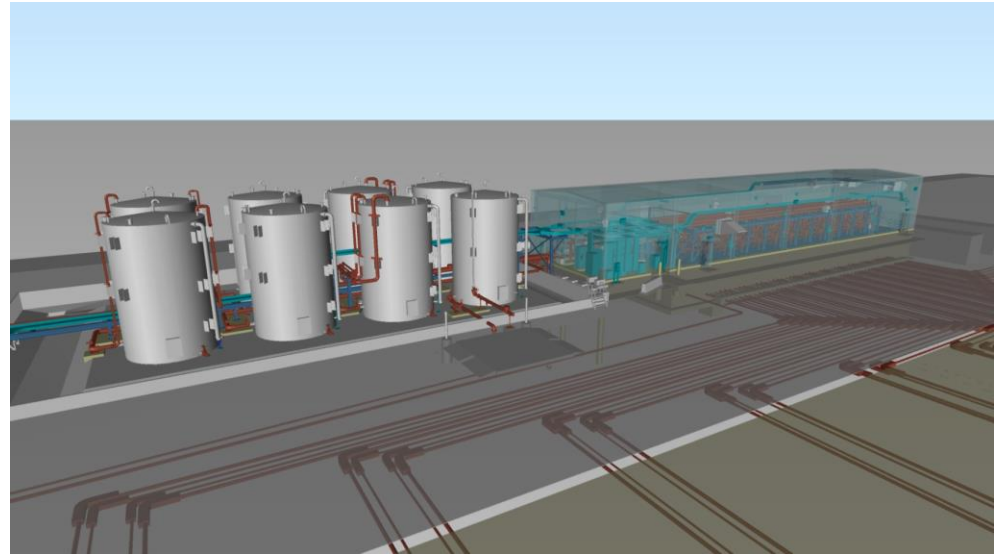
- Apply Technology:
 - Tool that add value to the business: AVEVA Integrated Engineering & Design;
 - Optimize existing tools;
- Improve Processes:
 - Support and engage people with a strong change management process;
 - Share process and technology across the business;

Benefits

- Centralized systems;
- Simple to manage
 - Software updates;
 - Users management;
- Cost effective
 - Eliminates the need of on premise IT infra-structure;
 - Gauge resources as required.

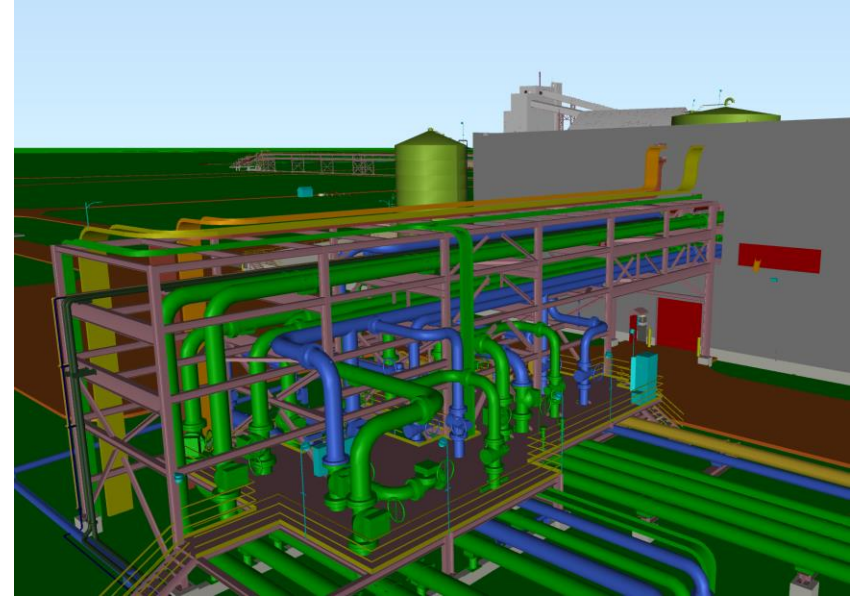
Case Study: Well Pads

With AVEVA IE&D tools
design data can be
easily replicated.



Case Study: Piping Repair Project

Accessible information
allowed easier budgeting and
efficient planning.



Conclusions

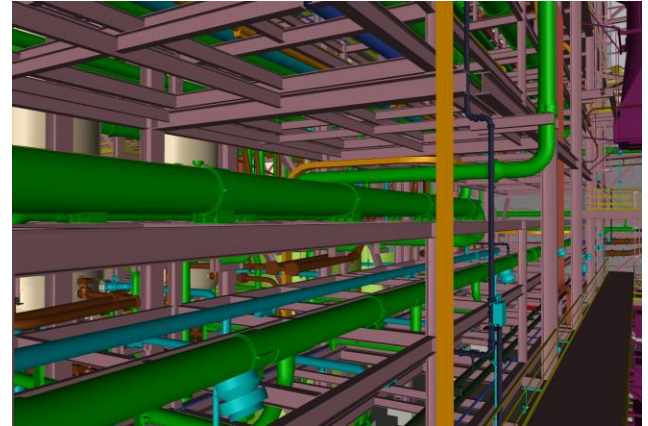
Centralized Environment:

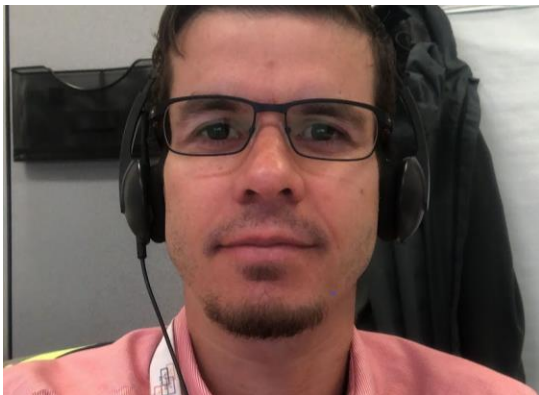
Efficient information, increased visibility and improved accountability.



Change Management:

Maintain your data evergreen
Control over concurrent projects.





Orlando Amaral

Engineering Systems Administrator, K+S Potash Canada

Orlando.Amaral@ks-potashcanada.com



Questions?

Please wait for the microphone.
State your name and company.





Please remember to...

Navigate to this session in the mobile
app to complete the survey.



Thank you!

 [linkedin.com/company/aveva](https://www.linkedin.com/company/aveva)

 [@avevagroup](https://twitter.com/avevagroup)

ABOUT AVEVA

AVEVA is a global leader in industrial software, sparking ingenuity to drive responsible use of the world's resources. The company's secure industrial cloud platform and applications enable businesses to harness the power of their information and improve collaboration with customers, suppliers and partners.

Over 20,000 enterprises in over 100 countries rely on AVEVA to help them deliver life's essentials: safe and reliable energy, food, medicines, infrastructure and more. By connecting people with trusted information and AI-enriched insights, AVEVA enables teams to engineer efficiently and optimize operations, driving growth and sustainability.

Named as one of the world's most innovative companies, AVEVA supports customers with open solutions and the expertise of more than 6,400 employees, 5,000 partners and 5,700 certified developers. With operations around the globe, we are headquartered in Cambridge, UK and listed on the London Stock Exchange's FTSE 100.

Learn more at www.aveva.com