

11/16/2022

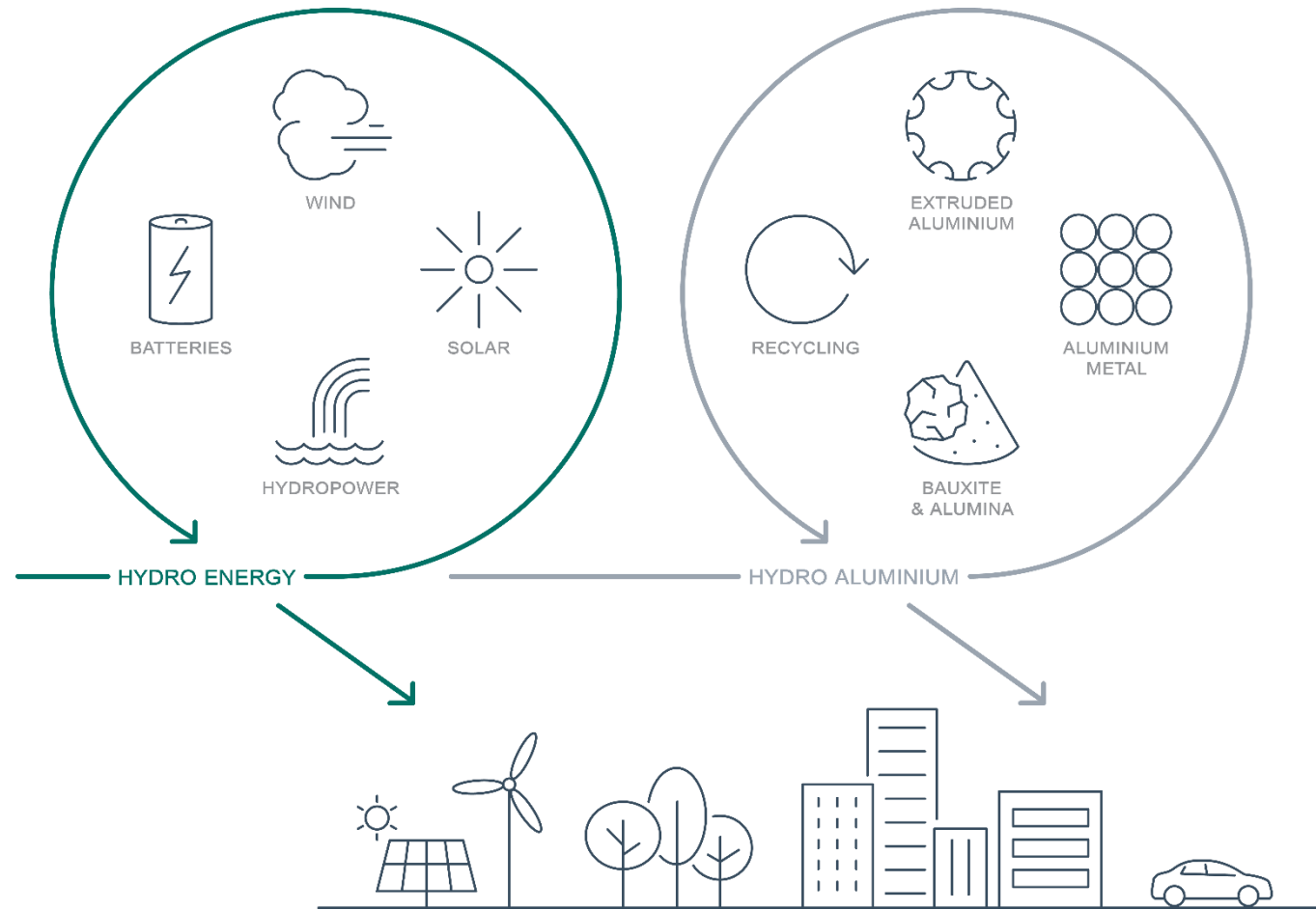
Norsk Hydro Alunorte: DMS - Daily Management System of Press Filter

SUBTITLE

Alexandre Freitas, Andre Ramos Thulio Magalhães

AVEVA

Global Performance – About Hydro



Hydro Bauxite & Alumina

- Bauxite mining and alumina refining as a raw material for aluminum production.
- We have one of the largest bauxite mines in the world and the largest alumina refinery outside of China, both located in the state of Pará, Brazil.
- More than 11,000 direct and indirect employees work at the Paragominas mine and alumina refinery in Barcarena
- We handle approximately 16 million tons of ore per year, producing approximately 11.4 million tons of bauxite annually
- Sale of alumina to external customers



Hydro Paragominas

- Paragominas – PA
- ~2.3 thousand direct and indirect employees.
- 100% ownership.
- Nominal capacity: 9.9 million tons.
- 2021 production: 10.9 million tons, up 26% from 2020.
- The flow of bauxite carried out by a pipeline is 244 km long and passes through seven municipalities in the state.
- MRN – Porto Trombetas, PA
- 5% ownership
- Guaranteed minimum purchase agreement for a 40% stake in Vale



Hydro Alunorte

- Barcarena – PA
- ~8.5 thousand direct and indirect employees
- 92% owned
- Nominal capacity: 6.3 million tons
- 2021 production: 6,3 million tons
- World's largest alumina refinery outside China
- Bauxite provided by Paragominas and MRN
- World-class conversion cost position
- Use of state-of-the-art filter press technology to process bauxite waste
- Plant optimization in preparation for extreme weather events





About ourselves in Alunorte

Digital transformation in Hydro Alunorte

- Alexandre began his career in 2017 at press filter and tailing área. At that time, all the operational/maintenance reports were Excel based linked with PI Process Book. The reports were sent as a PDF file at least 3 times a day.
- Andre began his career in 2018 at press filter and tailing area. But in Hydro Alunorte, he started in Alunorte in 2009.
- Thulio began his career in 2021 at automation team giving support to press filter área. Nowadays, he is working as system specialist at digital tranformation department.

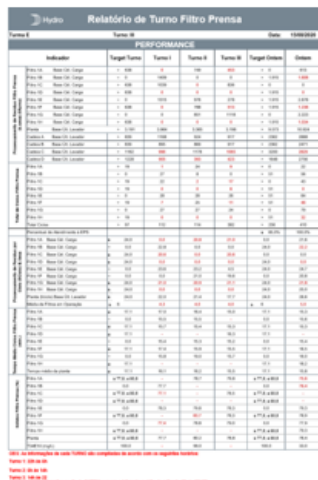
The addressed challenge

5 reports (DMS level 2 and 3, belt conveyor system, filters availability, pressure and cycle time)

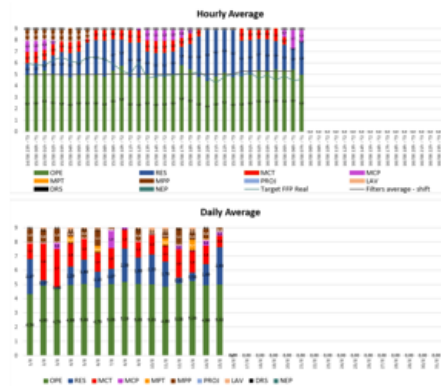
DMS Level 3



DMS Level 2



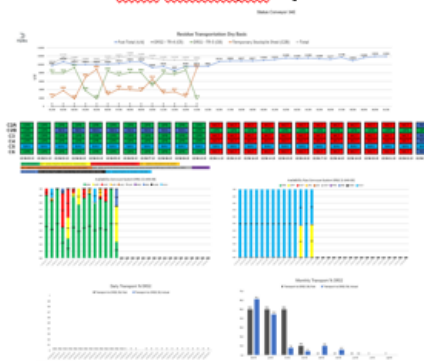
Filter Availability (Monthly, daily and hourly)



Stop Criterion (pressure profile and cycle time)



Belt Conveyor System

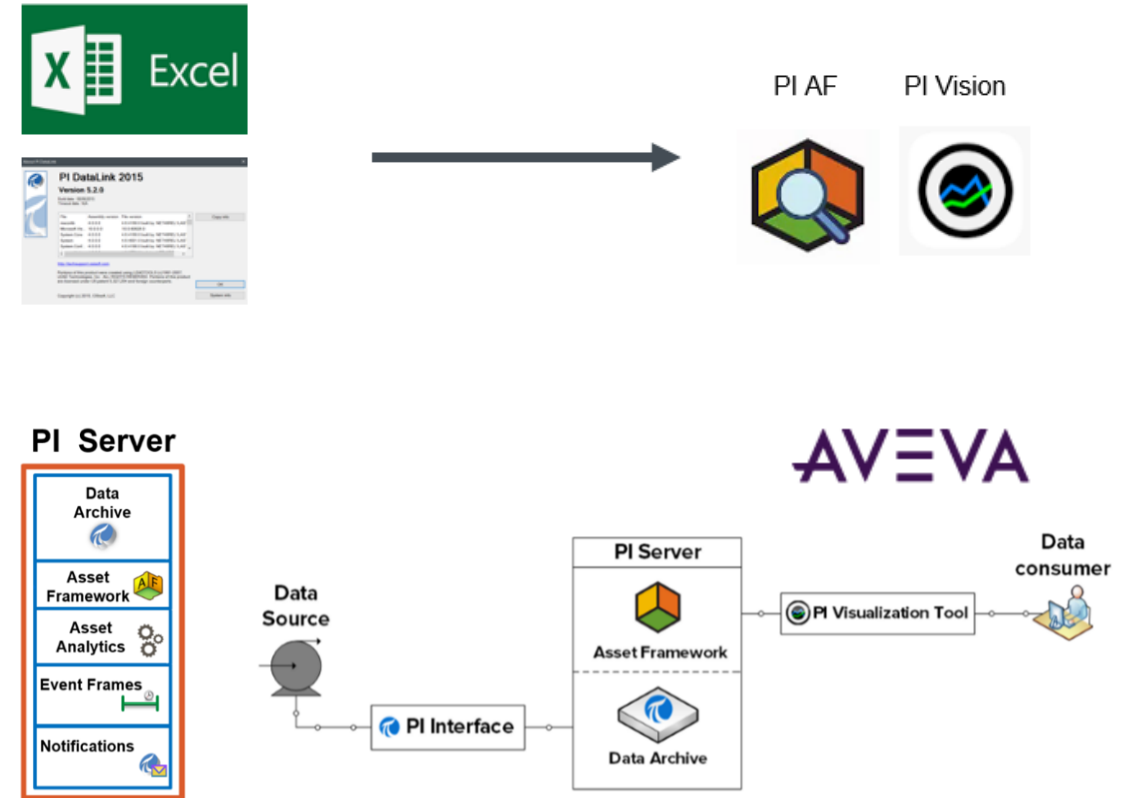


- Reports were sent during the day in specific times with Excel macro sub-routine for automatic e-mail sending (some indicators were extracted from PI tags and some were manually inputted).
- More than 350 calculations on Excel.
- High maintenance time due to calculations crashes and bugs in the reports.
- Delay on sending the information to operational, maintenance and engineering teams.
- Lack of information for decision making (press filter performance) impacting mud processing and press filter availability.

Operational insights

Better decisions with better data

- New tools to explore: asset analytics, event frames, notifications...
- Possibility to navigate between reports during the shifts (help to analyze).
- Created a reliable historical database, it can be used in a failures analysis or improvements.
- PI Vision and AF saved time, energy and turned the day of everybody more productive.



Implementation Details

How we make it real

- All KPIs calculation were reviewed.
- Calculation were migrated to PI AF – standard organized architecture of analysis/child elements (reducing data vulnerability).
- Dashboards were created in PI Vision (new interface) and tested with the team.
- Time of implementation: 6 months (first in Hydro Alunorte).

DMS Level 3



Filter Availability (Monthly, daily and hourly)



DMS Level 2



Belt Conveyor System



Stop Criterion (pressure profile and cycle time)

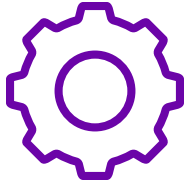


Impact of implementation

Avoided losses and gains

- Improved response time: increased reconnection speed between the shifts due to on-line monitoring reports related with pressure profile control and cycle time as example (higher synergy).
- Improved time of filter in high performance (availability and utilization).
- Report can be seen at mobile cell phones (access for all).
- Increased daily productivity and other KPIs: during shift change, the previous team deliver how much it was produced, how many filters were available for example. This was possible because the data/report were on-line and available, and it was an incentive to a healthy competition between the teams.
- Hydro Alunorte is implementing in other areas of the plant.
- Estimated avoided losses \approx USD 70k / year.
- PI Vision and AF supported full budget compliance.

How AVEVA improved our operations?



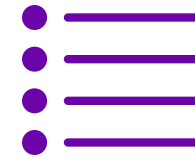
Challenge

- Provide a platform to monitoring 5 reports 24hrs a day, without crashing.
- To support the team to improve the control of mud filtration, transport system of the largest mud disposal area in the world.
- High maintenance time due to calculations crashes and bugs in the reports.
- More than 350 calculations were done to send the reports.



Solution

- Implementation the latest AVEVA PI System technology including PI AF and PI Vision as an advanced foundation for 24hrs of process monitoring.



Benefits

- Improved response time.
- Improved time of filter in high performance (availability and utilization).
- Increased daily productivity and other KPIs.
- Estimated avoided losses \approx USD 70k / year.
- PI Vision and AF supported full budget compliance.

“Together we are stronger, be part of the challenge and be part of the solution”

Hydro Alunorte Team



Alexandre Freitas

Senior Process Engineer

- Hydro Alunorte
- alexandre.freitas@hydro.com



Andre Ramos

Operations Manager

- Hydro Alunorte
- andre.ramos@hydro.com



Thulio Magalhães

System Specialist

- Hydro Alunorte
- thulio.magalhães@hydro.com

Questions?

Please wait for the microphone.
State your name and company.



Please remember to...


Navigate to this session in the mobile app to complete the survey.



Thank you!

This presentation may include predictions, estimates, intentions, beliefs and other statements that are or may be construed as being forward-looking. While these forward-looking statements represent our current judgment on what the future holds, they are subject to risks and uncertainties that could result in actual outcomes differing materially from those projected in these statements. No statement contained herein constitutes a commitment by AVEVA to perform any particular action or to deliver any particular product or product features. Readers are cautioned not to place undue reliance on these forward-looking statements, which reflect our opinions only as of the date of this presentation.

The Company shall not be obliged to disclose any revision to these forward-looking statements to reflect events or circumstances occurring after the date on which they are made or to reflect the occurrence of future events.

 [linkedin.com/company/aveva](https://www.linkedin.com/company/aveva)

 [@avevagroup](https://twitter.com/avevagroup)

ABOUT AVEVA

AVEVA is a global leader in industrial software, sparking ingenuity to drive responsible use of the world's resources. The company's secure industrial cloud platform and applications enable businesses to harness the power of their information and improve collaboration with customers, suppliers and partners.

Over 20,000 enterprises in over 100 countries rely on AVEVA to help them deliver life's essentials: safe and reliable energy, food, medicines, infrastructure and more. By connecting people with trusted information and AI-enriched insights, AVEVA enables teams to engineer efficiently and optimize operations, driving growth and sustainability.

Named as one of the world's most innovative companies, AVEVA supports customers with open solutions and the expertise of more than 6,400 employees, 5,000 partners and 5,700 certified developers. With operations around the globe, we are headquartered in Cambridge, UK and listed on the London Stock Exchange's FTSE 100.

Learn more at www.aveva.com