

NOVEMBER 2022

---

# Visualizing the Digital Twin, an independent service on the industrial cloud platform

Steve Parvin, AVEVA and Lori Warda, AVEVA

**AVEVA**



# Introduction – the Business Challenge

## Building a Solid Engineering Data Set

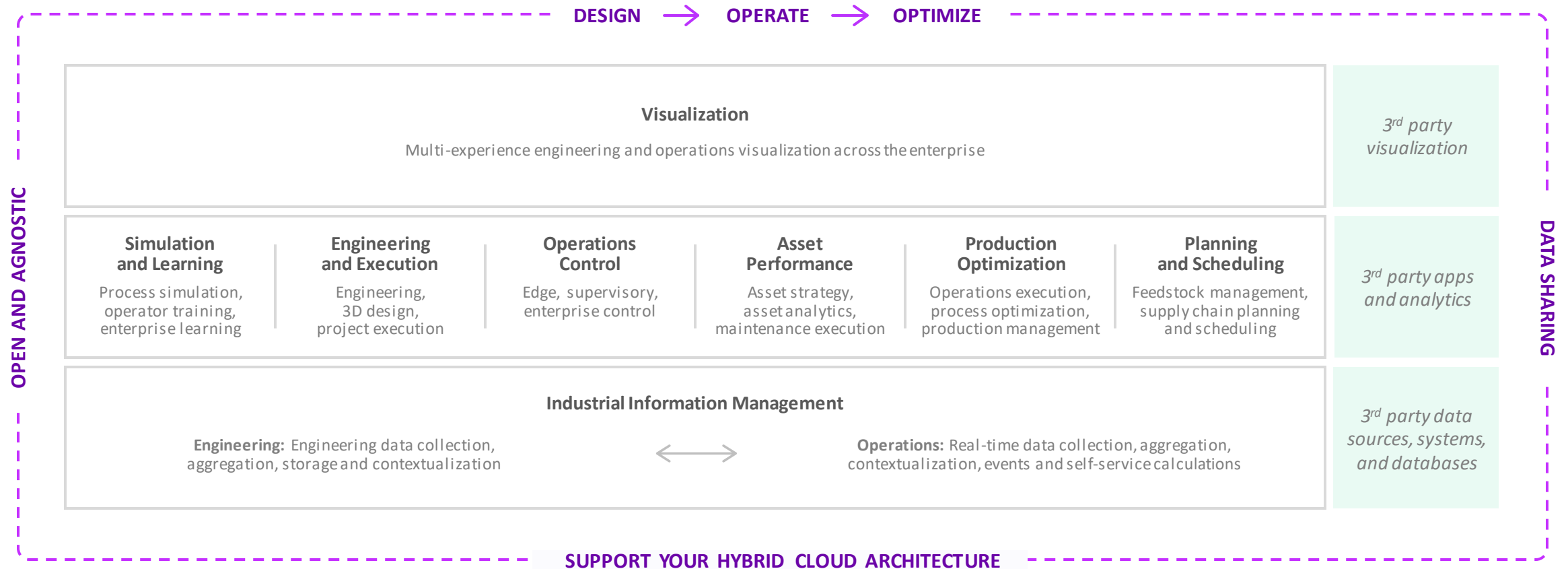
## Integrating Engineering Data in AVEVA Insight



# The business challenge

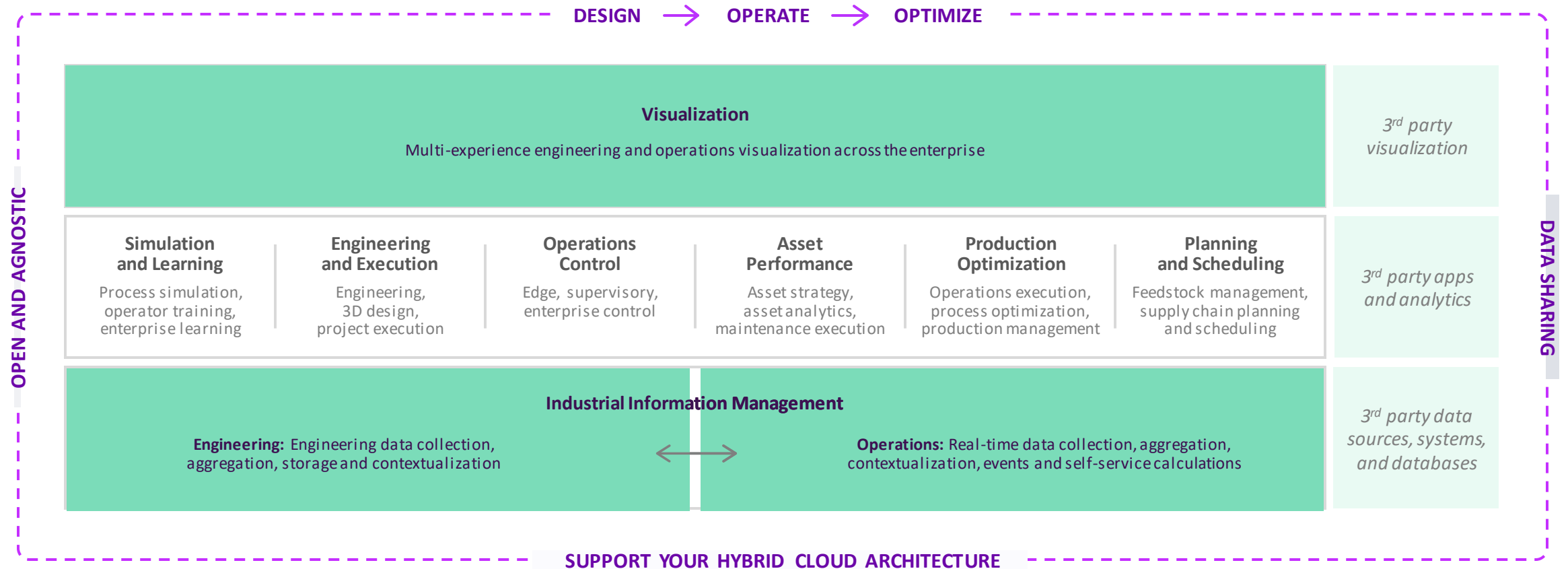
# Delivering a complete digital thread, purpose-built for industry

Accelerate time to value with flexible, scalable, and trusted industrial hybrid SaaS solutions

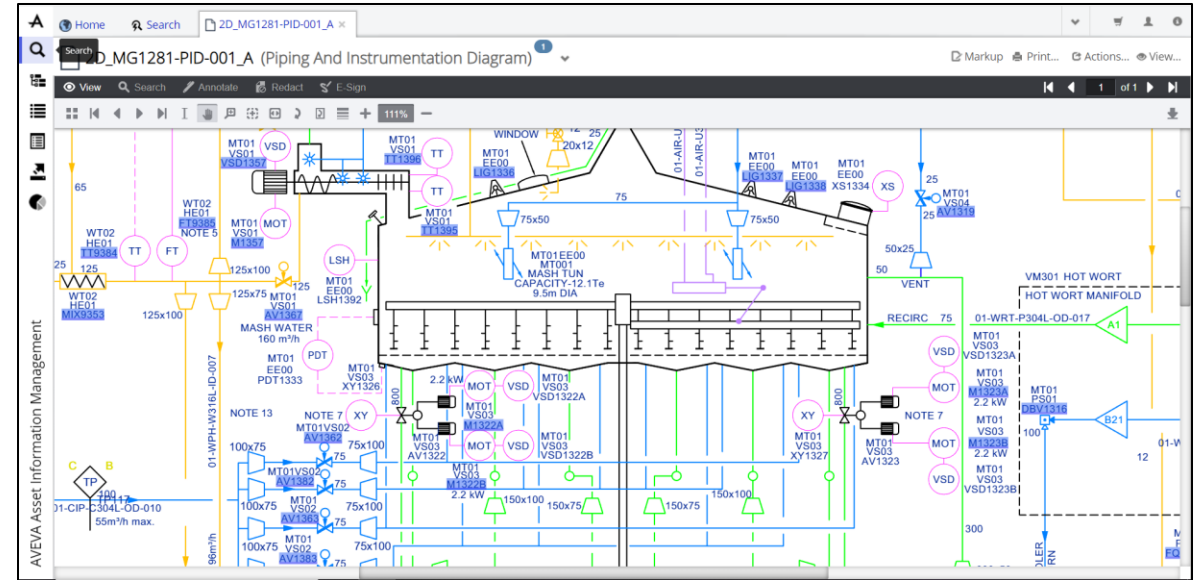
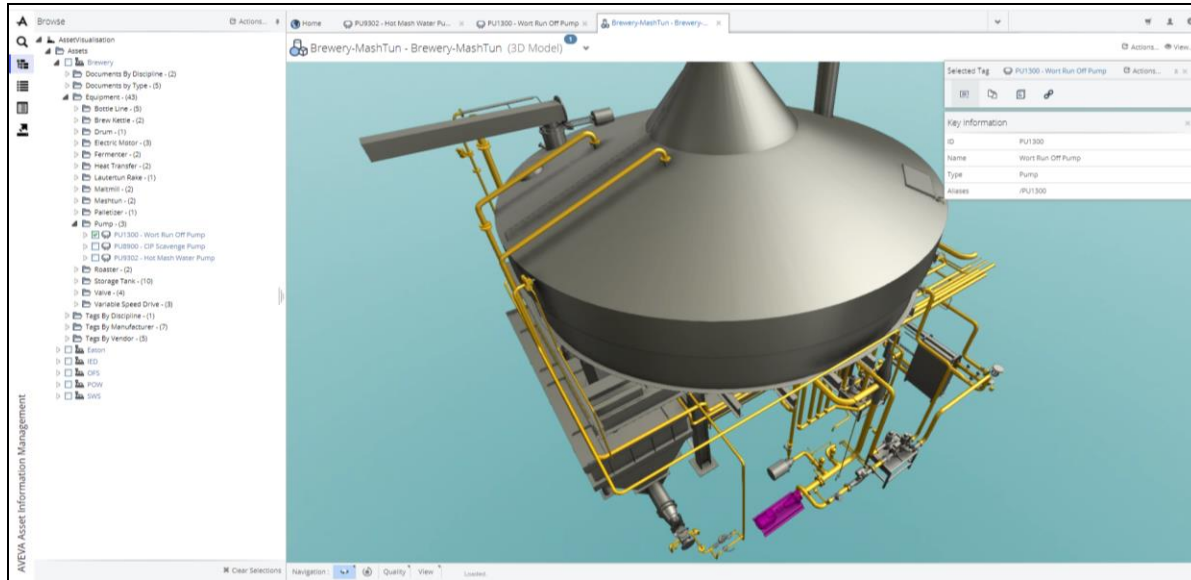


# Industrial information management

## The foundation of the digital twin



# AVEVA Asset Information Management Advantages



Eliminate data silos  
with all information  
available in one place



Improve safety and  
compliance with  
quick access to  
critical information



Gain the insights  
necessary for  
informed, good  
decision making



Save time and effort  
on finding and  
validating  
information



Empower teams to  
collaborate with a  
360° view of data



Reduce costs and  
time to value with a  
cloud solution





# Trusted information matters

Accurate decision making relies on being able to find the correct information, at the right time

- Businesses with poor asset information management processes are found have total business expenditures up to 5% higher.

Ref. IAM Institute

Asset Information, Strategy, Standards and Data Management SCG, 2018

- “Only 2/3 of required asset information is in the EAM system.”

ARC Advisory Group survey 2010/SAP-Centric EAM 2011

- “The cost of poor asset information equates to 1.5% of sales revenue p.a.”

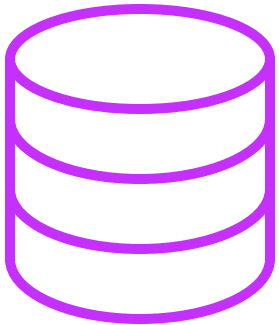
Ref. NIST Study / SAP-Centric EAM 2011

**AVEVA**

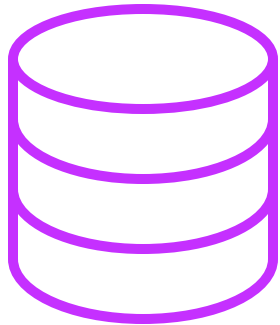
# Data silos

Disconnected information in multiple systems and formats

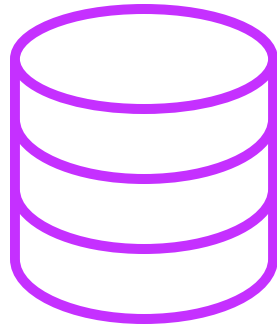
- Different user experiences/training
- Time to find and aggregate
- Alignment/trust



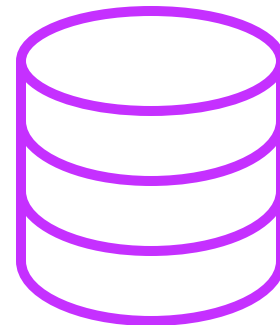
Drawings and schematics



3D models



Operating procedures



Vendor data

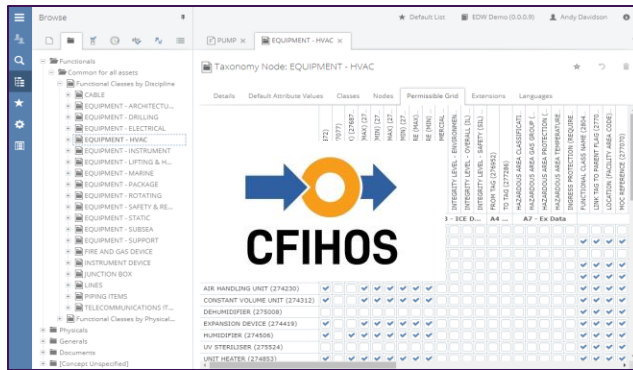


Maintenance records

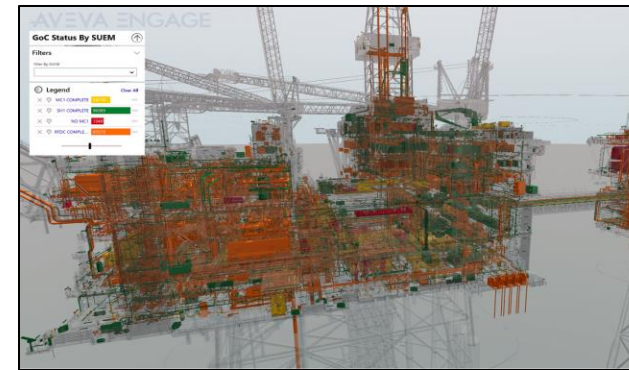


# Capabilities during CAPEX

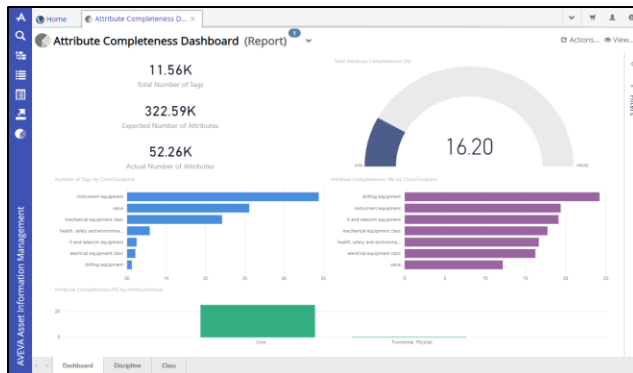
Improve visibility, trust and control to meet budget and schedule while enabling a smooth handover and a quick start-up



Information standard aligned with international standards to guide adoption of a consistent approach to information.



Collaborative, graphical reviews of constructability and commissioning status



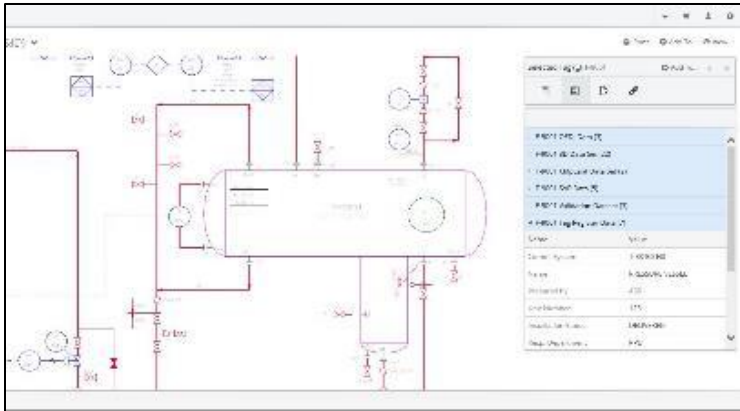
Accurately measure data quality Verify consistency, compliance and completeness of data from EPC.



Use the 3D model for conducting e-reviews and apply mark-up remotely.

# Capabilities during OPEX

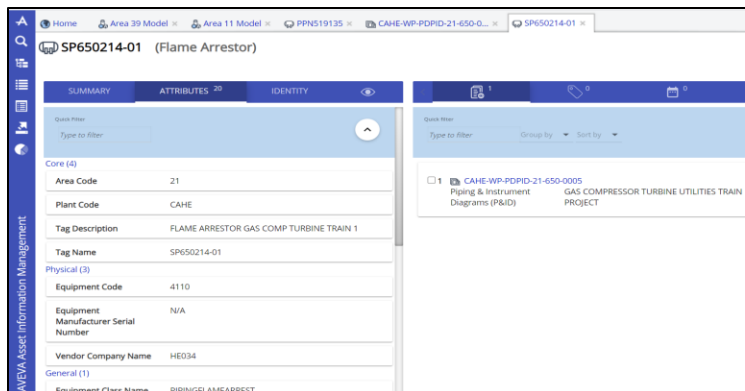
Use of as-operated engineering data to support analysis for performance, safety, process issues...



Intelligent,  
Hotspotted  
2D Diagram  
(PEFS, Instruments &  
Electrical drawings

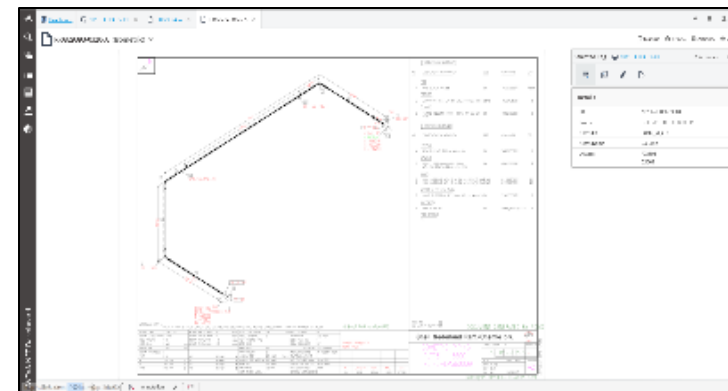


Interactive  
Streamed 3D  
Model



SUMMARY	
Area Code	21
Plant Code	CAHE
Tag Description	FLAME ARRESTOR GAS COMP TURBINE TRAIN 1
Tag Name	SP650214-01
Physical (3)	
Equipment Code	4110
Equipment Manufacturer Serial Number	N/A
Vendor Company Name	HE034
General (1)	
Equipment Class Name	PIPING/FLAMEARREST

Functional  
Location Summary  
Page

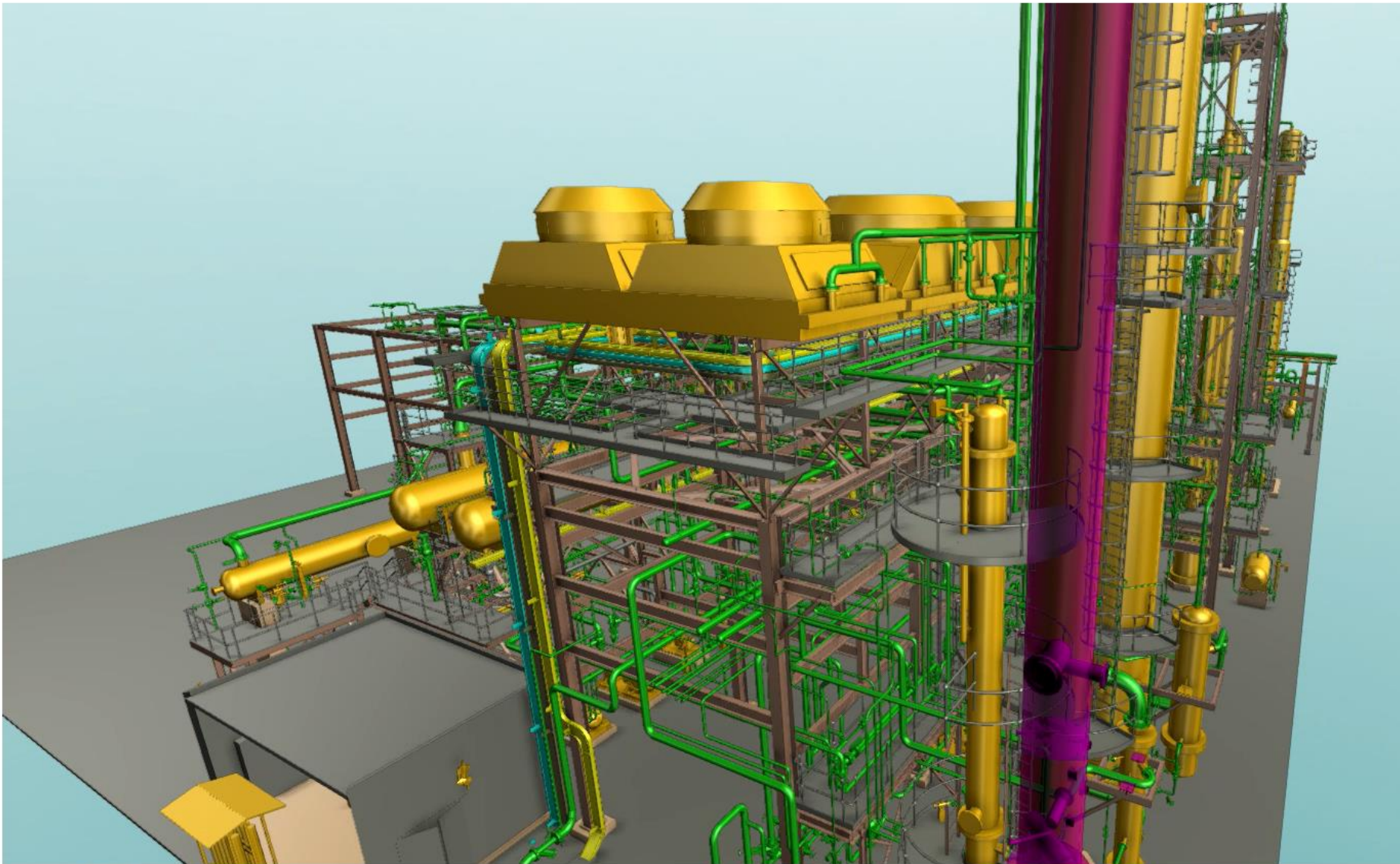


Intelligent,  
Hotspotted  
Isometric,  
Corrosion Loop Iso  
etc

---

Contextualize your data with AVEVA™  
Asset Information Management





Selected Tag

E-9002

Actions...

Attributes

Filter

Expand All

Core (12)

Area Code

P10

Asset

IED

Category

Equipment

Function Code

VE

Main Tag

24XX001

Maintenance System Code

24

Norwegian Description

Destillasjonskolonne

Purchase Order Number

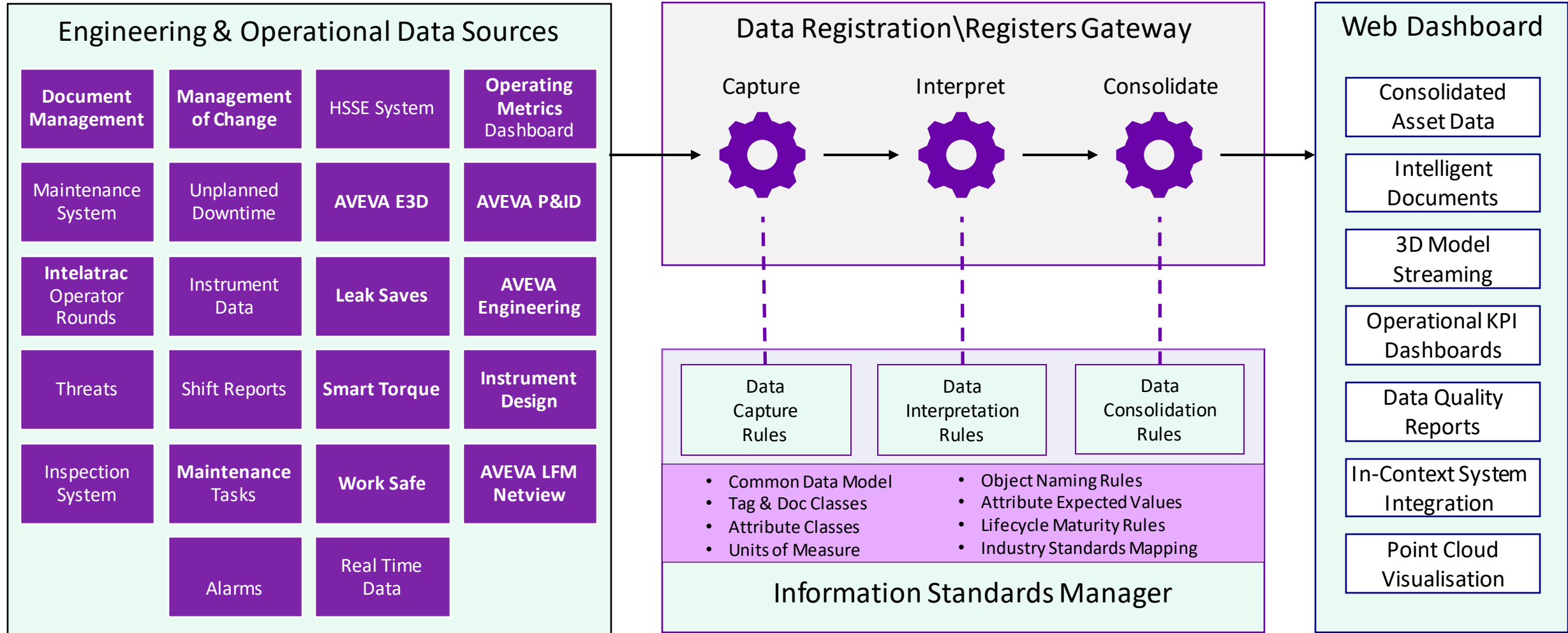
ER272

Sub System

2402-04



# Complex data mapping



[illegible]

CFIHOS Information Specification 1.3 Data Model

Audit Trail

- 0.0.0.2 melinda.hemstead@aveva.com test removal 14 Nov 2019 - 10:31
- 0.0.0.1 melinda.hemstead@aveva.com Initial content 11 Oct 2018 - 14:00

Functionals

- equipment class (functional)
  - drilling equipment
  - electrical equipment class
  - enclosure
  - health, safety and environme...
  - infrastructure
  - instrument equipment
    - analysier instrument
    - control switch
    - controller
    - detecting element
    - detector
    - flow instrument
    - flow totalizer
    - gauge
    - general instrument
    - indicating instrument
    - instrument loop
    - level instrument
    - orifice plate
    - pressure instrument
    - signal converter
    - temperature instrument
    - transmitter
    - weight instrument
  - it and telecom equipment
  - mechanical equipment class
  - miscellaneous equipment
  - tool
  - valve

controller

Details Network **Permissible Attributes** Sub Classes Taxonomy Occurences Extensions Languages

Functional Class: controller

Id CFIHOS-30000666 Name controller

Description  
A regulator that operates automatically to affect a controlled variable by comparing the value of the controlled variable with the value of a reference variable in order to reduce the difference between them.

Corresponding Identifiers

CFIHOS CFIHOS-30000666

ISO 15926 4293

POSC CAESAR RDS289844

STEPLIB 71001

Properties Specific to Functional Class

Extends instrument equipment

Naming Templates

Abstract Concept Discipline Life Cycle Type

General Properties

Obsolete Sort Order Aspect ClassCategory:Functional

CFIHOS Information Specification 1.3 Data Model (0.0.0.2)

controller

Details Network Permissible Attributes Sub Classes Taxonomy Occurences Extensions Languages

Functional Class: controller

ID	Name	Data Type	UoM Req...	Measure Class	Validation Type	Validation Rule	Discipline	Presence
Group: General Attribute								
CFIHOS...	area code	String			locates   ...	area	al...	Required
CFIHOS...	commissioning unit code	String			group   ...	commissionin...	al...	Required
AVEVA...	construction assembly code	String			group   ...	construction a...	al...	Required
CFIHOS...	corrosion loop code	String			group   ...	corrosion loop	al...	Required
AVEVA...	designed by company name	String			designs...	company	al...	Required
CFIHOS...	maintenance system code	String			group   ...	maintenance...	al...	Required
CFIHOS...	maintenance unit code	String			group   ...	maintenance...	al...	Required
CFIHOS...	plant code	String			group   ...	plant	al...	Required
CFIHOS...	process unit code	String			is functi...	process unit	al...	Required
AVEVA...	tag requisition number	String					al...	Required
Group: Core								
CFIHOS...	legal registration number	String					al...	Required
AVEVA...	parent tag name	String			is functi...	equipment cla...	al...	Required
CFIHOS...	production critical item	String			Enumeration	yes no	al...	Required
CFIHOS...	project name	String					al...	Required
AVEVA...	tag description	String					al...	Required
CFIHOS...	tag name	String			include...	equipment cla...	al...	Required
CFIHOS...	tag status	String			Enumeration	engineering st...	al...	Required
Group: Engineering Flags								
CFIHOS...	safety critical item	String			Enumeration	yes no	al...	Required
CFIHOS...	safety critical item group	String			Enumeration	safety critical...	al...	Required

+ Add Maturity Level: Default

controller engineering status

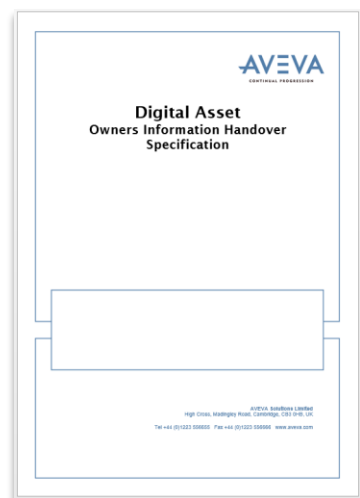
Lookup List: engineering status

Details Attributes Using Items Extensions Languages

ID	Name	Description
CFIHOS-60001414	approved for construction	Approved for Construction
CFIHOS-60001416	approved for detail design	Approved for Detail Design
CFIHOS-60001418	as built	As Built



## AVEVA ISM Composition of Layers



# Information Standard Deliverables Matrix



---

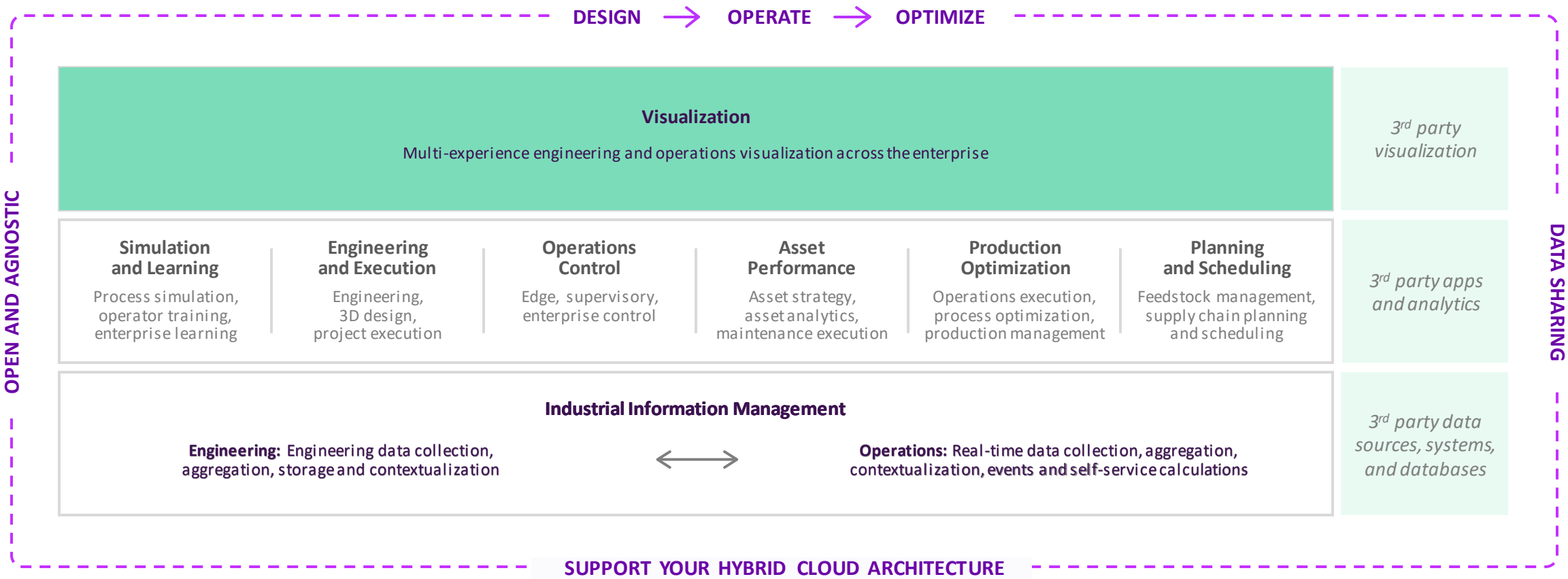
# Bringing the digital twin to life using AVEVA™ Insight





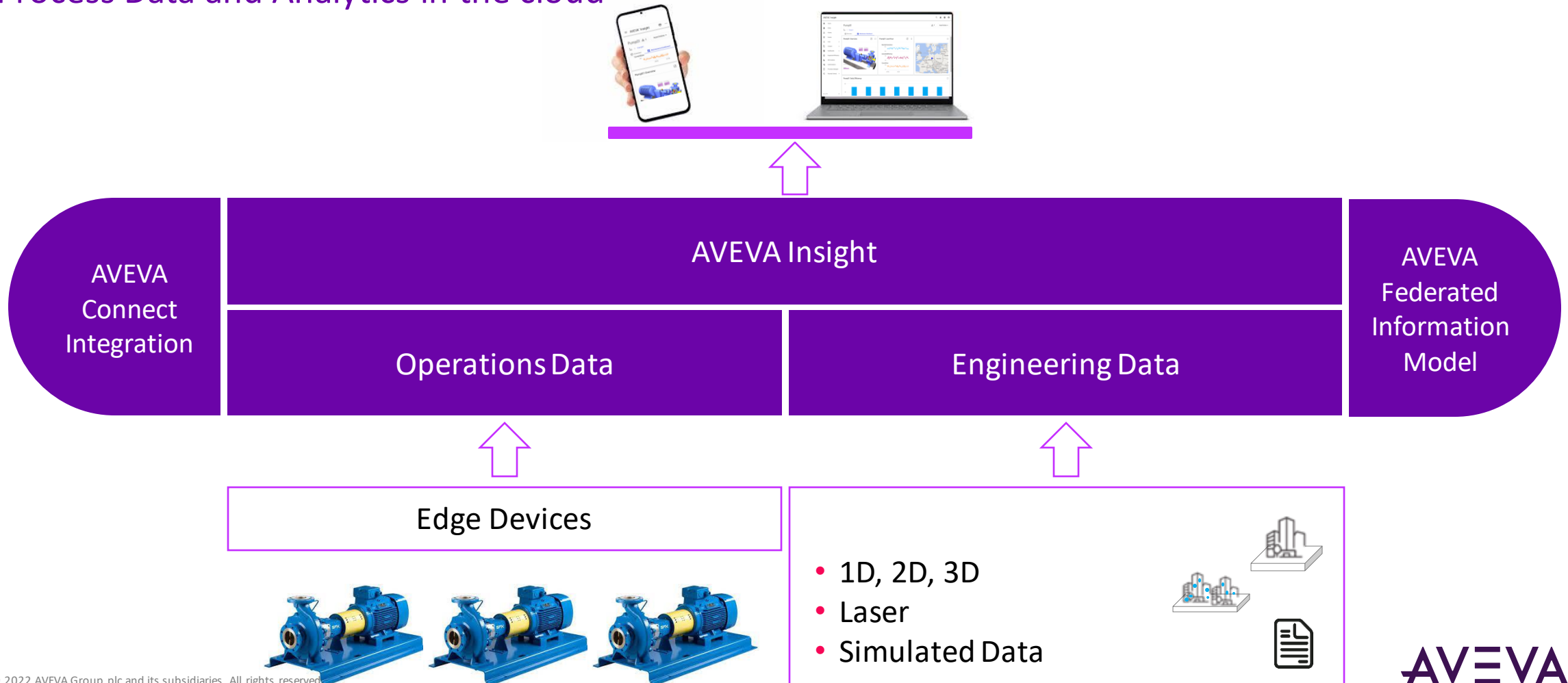
# Visualization is the final step

Experience the digital twin in real-time – when, where, and however you like.



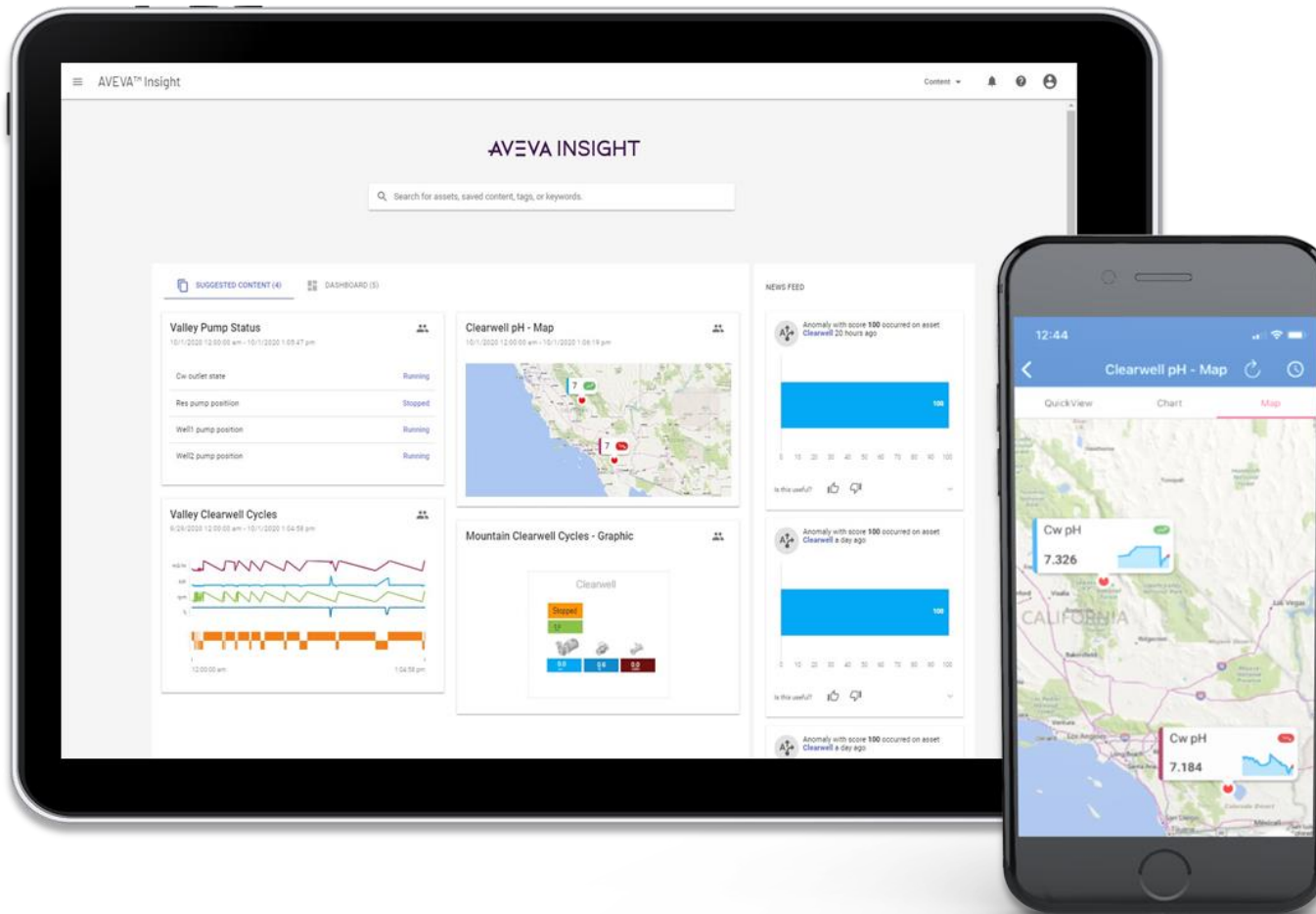
# Visualization of Digital Twin

Leveraging the AVEVA Asset Information Management-Advanced Investment by integrating with Process Data and Analytics in the cloud



# AVEVA Insight

Make better and faster decisions with complete visibility of your operations in the cloud.

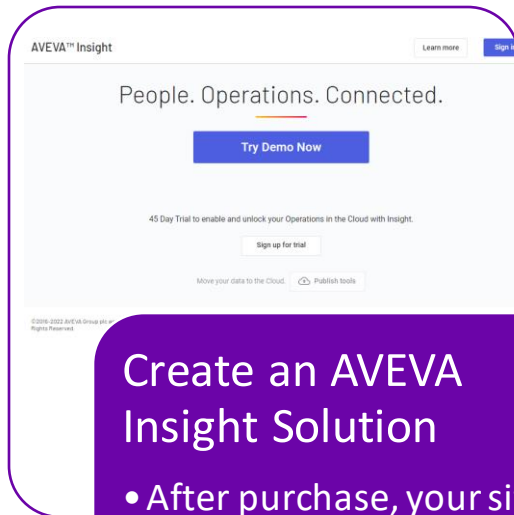


AVEVA Insight provides information when and where you need it, so you and your teams, can better manage your assets and improve performance.

- Unlock critical data
- Increase collaboration
- Improve asset reliability
- Drive operational performance

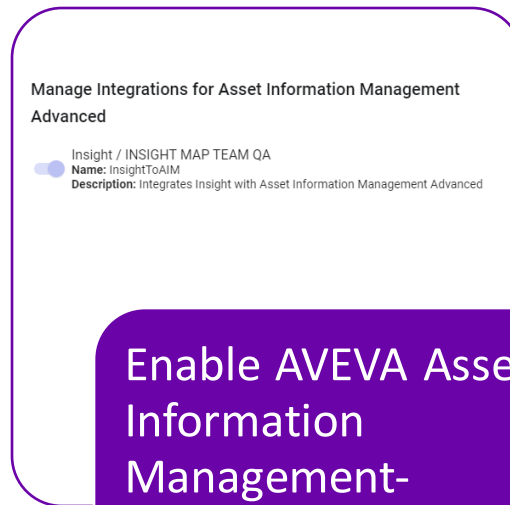
# Bringing real-time data into view

How to start with AVEVA Insight as an AVEVA Asset Information Management-Advanced customer



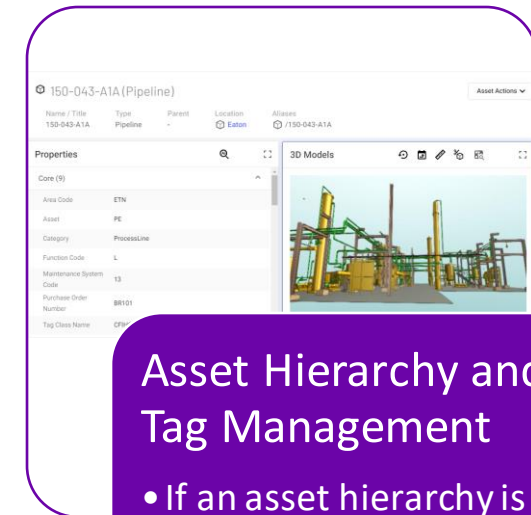
## Create an AVEVA Insight Solution

- After purchase, your site will be created
- The solution will be in the same account as AVEVA Asset Information Management-Advanced



## Enable AVEVA Asset Information Management-Advanced integration

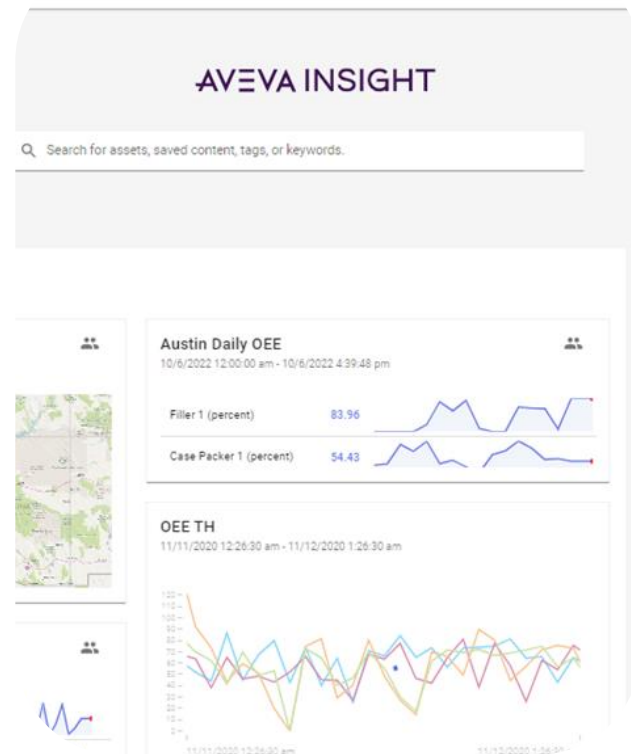
- Integration is self-service – once the solutions are created, it is as easy as checking a button










## Asset Hierarchy and Tag Management

- If an asset hierarchy is already created in Insight, we will show you how to align them

# AVEVA Insight Capabilities



-  Real Time Data Analysis
-  Search Based Navigation
-  Automated Analytics (Newsfeed)
-  Asset View
-  Dashboarding
-  Condition Based Rules
-  Advanced & Guided Analytics



AVEVA™ Insight

🏠 Home

🔔 Alerts

🕒 Alarms

📦 Assets

☰ Lists

📄 Content

📊 Dashboards

📁 Collections

⚙️ Equipment Efficiency

🔍 OEE Analysis

⚙️ Administration

🕒 Recently Viewed

AVEVA INSIGHT

🔍 Search for assets, data or saved content

Pump 101 Data

10/20/2022 12:00:00 am - 10/21/2022 12:00:00 am

Time	9002A Status	9002A Discharge Flow Rate (L/min)	9002A Efficiency (%)	9002A Temperature (C)
12:00	On	500	100	1,200
15:00	Off	500	100	1,200
21:00	On	500	100	1,200

Interesting facts about your data

We spend the first week or two learning about your data. After that, you'll begin seeing news stories here that highlight unusual and interesting events in your data trends.

8

?

# Creating Dashboards

AVEVA™ Insight

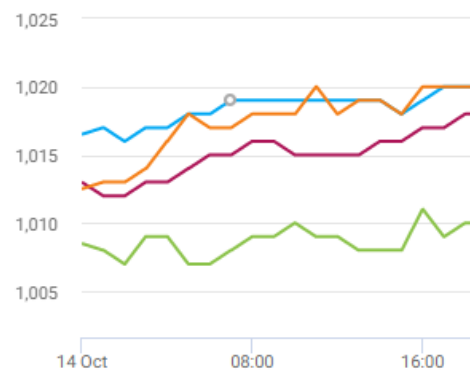


- Home
  - Alerts
  - Alarms
  - Assets
  - Lists
  - Content
  - Dashboards**
  - Collections
  - Equipment Efficiency
  - OEE Analysis
  - Recently Viewed
- COLLAPSE

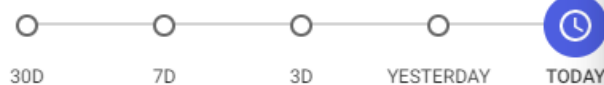
## Dashboard001

### Barometric Pressure

10/14/2022 12:00:00 am - 10/14/2022 6:29:33 pm



Adelaide (hPa) Brisbane (hPa)  
Canberra (hPa) Darwin (hPa)



## Content Browser



### Content Type

- Engineering
- Asset Efficiency
- Asset Overview
- Visualization

### Engineering

- 3D Viewer
- Doc Viewer
- Point Cloud Viewer
- Properties
- Relationship Explorer

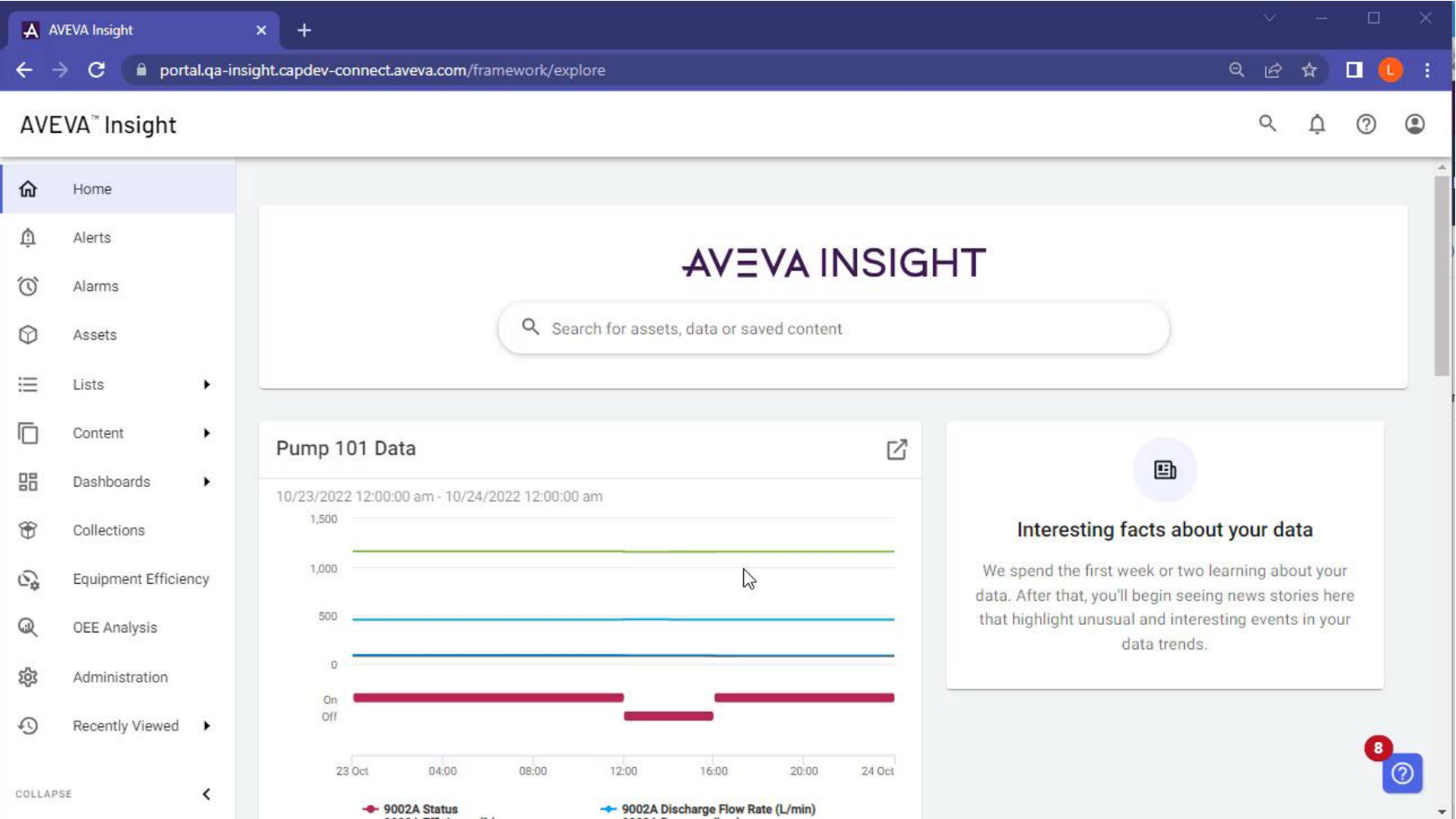
### Existing Content

Search

014-T-016

FileGraphicTest-2

# Creating Dashboards Demo



J-9002A

portal.qa-insight.capdev-connect.aveva.com/framework/engineering/s901%7Cj-9002a

AVEVA™ Insight

Home

Alerts

Alarms

Assets

Lists

Content

Dashboards

Collections

Equipment Efficiency

OEE Analysis

Administration

Recently Viewed

J-9002A (Pump)

Name / Title

J-9002A

Type

Pump

Parent

-

Location

IED

Aliases

/J-9002A

J-9002A

Overview

Summary View

Point Cloud Dashboard

Properties

Core (12)

Area Code

C31

Asset

IED

Category

Equipment

Function Code

PA

Main Tag

43PA002B

Maintenance System Code

43

Previous Ld Tag Number(s)

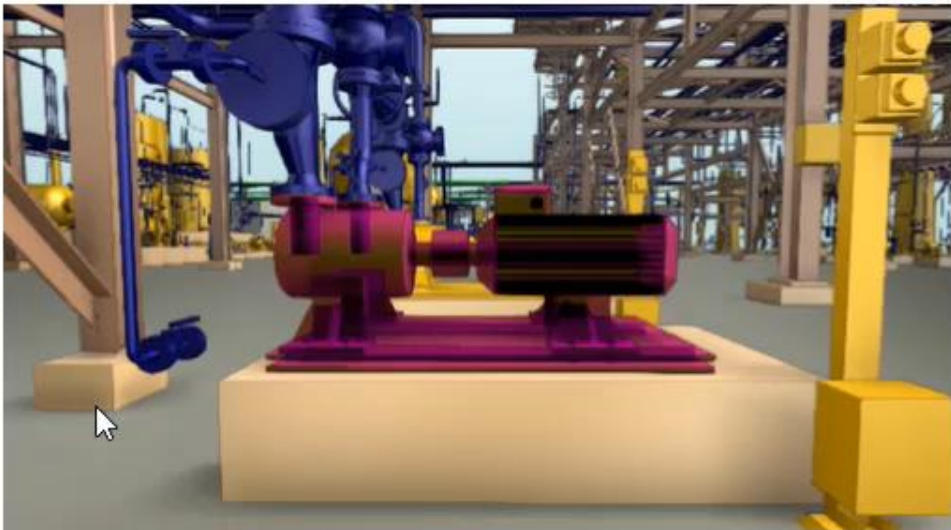
53PH001A

Purchase Order Number

ER300

Relationships

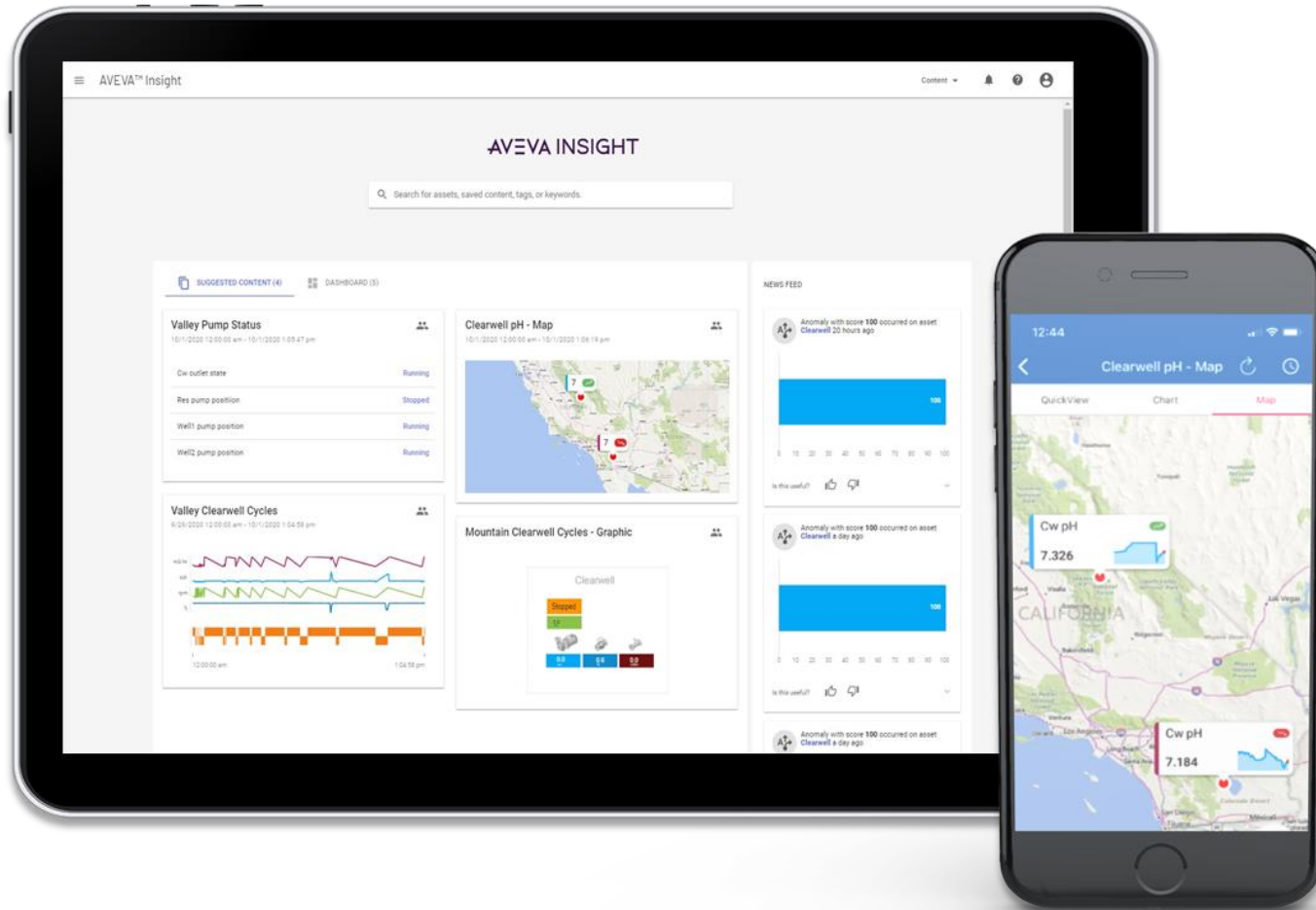
3D Models



Documents

Asset Actions

# Mobile Capabilities



Insight works on any device from any where

Mobile application for native access

Responsive Web Site

# Release Plans

## AVEVA Insight / AVEVA Asset Information Management-Advanced Integration

### Available Now

- AVEVA Insight
- AVEVA Information Standards Manager
- AVEVA Asset Information Management-Advanced

### Lighthouse Release 1Q 2023

- Initial Feature set available for Lighthouse Program
- Seeking AIM-A Customers to partner with us

### General Availability April 2023

- Search
- Asset / Summary View
- Dashboarding Widgets
- Collections
- Power BI Report View
- Point Cloud Viewing

### 2023 +

- Custom Query / Visual Query
- Search Results / Saving
- Document Mark Up
- Enhanced 2D Document Viewing
- Administrative Tools



<https://trust.aveva.com>

# Learn more about AVEVA Connect & AVEVA Data Hub

## Industrial Cloud Platform @ AVEVA PI World 2022 – San Francisco

### Day 1: Industrial Cloud Platform

- AVEVA: AVEVA Connect, Industrial Cloud Platform – Vision, roadmap, and starting your operations and engineering digital twin journey [14:00]
- AVEVA: Power your secure industrial ecosystem of data, applications, and partners with AVEVA Data Hub connected communities [14:40]
- AVEVA: Accelerate Your Time to Value with Analytics and Applications Fueled by AVEVA Data Hub [15:40]
- AVEVA: On your marks, get set, Unleash your Operational Data in the Cloud! [16:20]
- AVEVA: Aggregating Engineering Content, Data and Documents and Real-Time Data into a Common User Experience [17:00]

### Day 2: Customer Presentations

- Wood: Building a digital twin alongside the physical asset to unlock value across the full lifecycle at Wood [10:45]
- KBR: The complete digital twin at KBR [11:30]
- Kent: Asset Digital Thread [12:05]
- Saudi Aramco: 4IRC PI Based SOLUTIONS and Applications [14:00]
- ENEOS: Facilities Reliability Improvement using Digital Twin Technology [14:35]
- ExxonMobil: A Practical Implementation of CFIHOS to meet Data Surveillance Needs [15:10]

### Day 3: Industrial Cloud Platform

- AVEVA: Four Imperatives of a Trusted Information Infrastructure [10:45]
- AVEVA: Deploy Edge Data Store and Adapters in minutes with AVEVA Edge Management [11:25]
- AVEVA: Visualizing the Digital Twin, an Independent Service on the Industrial Cloud Platform [13:30]
- AVEVA: Uniting the connected community through secure and transparent industrial data sharing [14:25] [\[this talk\]](#)
- AVEVA: Harnessing the power of Sequential Data Store (Sds) and Assets for developers and partners [15:30]
- AVEVA: Aggregating data with Data Hub asset rules and data views for analytics and applications [16:25]





# Steve Parvin

VP Head of Information Engineering

- AVEVA
- [Steve.Parvin@aveva.com](mailto:Steve.Parvin@aveva.com)



# Lori Warda

Senior Product Manager – AI & Analytics

- AVEVA
- [Lori.Warda@aveva.com](mailto:Lori.Warda@aveva.com)



# Questions?

Please wait for the microphone  
State your name and company



# Please remember to...

Navigate to this session in the mobile  
app to complete the survey.




# Thank you

# AVEVA

This presentation may include predictions, estimates, intentions, beliefs and other statements that are or may be construed as being forward-looking. While these forward-looking statements represent our current judgment on what the future holds, they are subject to risks and uncertainties that could result in actual outcomes differing materially from those projected in these statements. No statement contained herein constitutes a commitment by AVEVA to perform any particular action or to deliver any particular product or product features. Readers are cautioned not to place undue reliance on these forward-looking statements, which reflect our opinions only as of the date of this presentation.

The Company shall not be obliged to disclose any revision to these forward-looking statements to reflect events or circumstances occurring after the date on which they are made or to reflect the occurrence of future events.



 [linkedin.com/company/aveva](https://www.linkedin.com/company/aveva)

 [@avevagroup](https://twitter.com/avevagroup)

#### ABOUT AVEVA

AVEVA is a global leader in industrial software, sparking ingenuity to drive responsible use of the world's resources. The company's secure industrial cloud platform and applications enable businesses to harness the power of their information and improve collaboration with customers, suppliers and partners.

Over 20,000 enterprises in over 100 countries rely on AVEVA to help them deliver life's essentials: safe and reliable energy, food, medicines, infrastructure and more. By connecting people with trusted information and AI-enriched insights, AVEVA enables teams to engineer efficiently and optimize operations, driving growth and sustainability.

Named as one of the world's most innovative companies, AVEVA supports customers with open solutions and the expertise of more than 6,400 employees, 5,000 partners and 5,700 certified developers. With operations around the globe, we are headquartered in Cambridge, UK and listed on the London Stock Exchange's FTSE 100.

Learn more at [www.aveva.com](https://www.aveva.com)