

NOVEMBER 2022

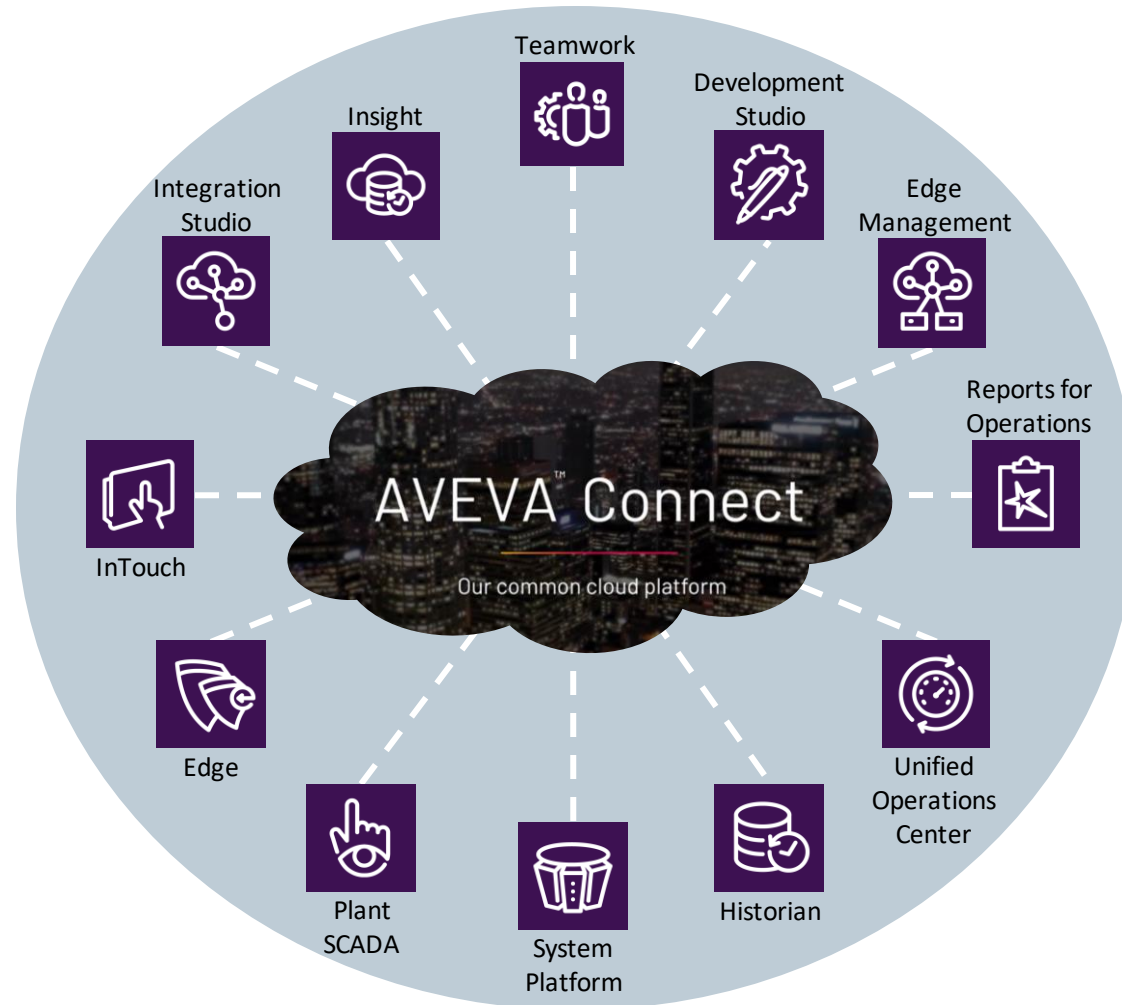
Getting The Most Out of AVEVA™ Operations Control

Brian Leonard
Elliott Middleton

AVEVA

AVEVA Operations Control

Hybrid SaaS Platform



AVEVA Teamwork Areas of Focus

Communication

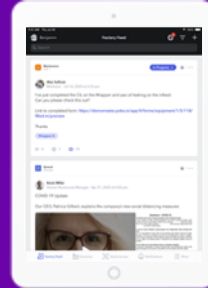
Connect with workers across shifts and facilities to solve problems. Share insights in a logbook and continuously grow the archive of knowledge.

Skills Management

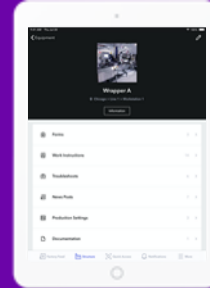
Deliver and track training for new hires, upskilling and certifications with a review pane to view pending and completed training.



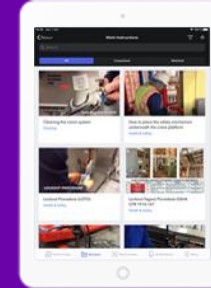
Collaboration



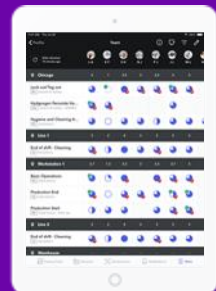
Factory Feed



Equipment



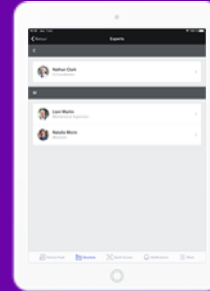
Video Library



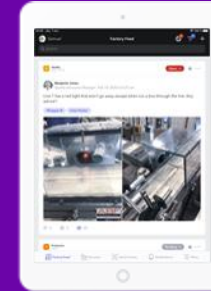
Users/Skills



Procedures



Subject Matter Experts



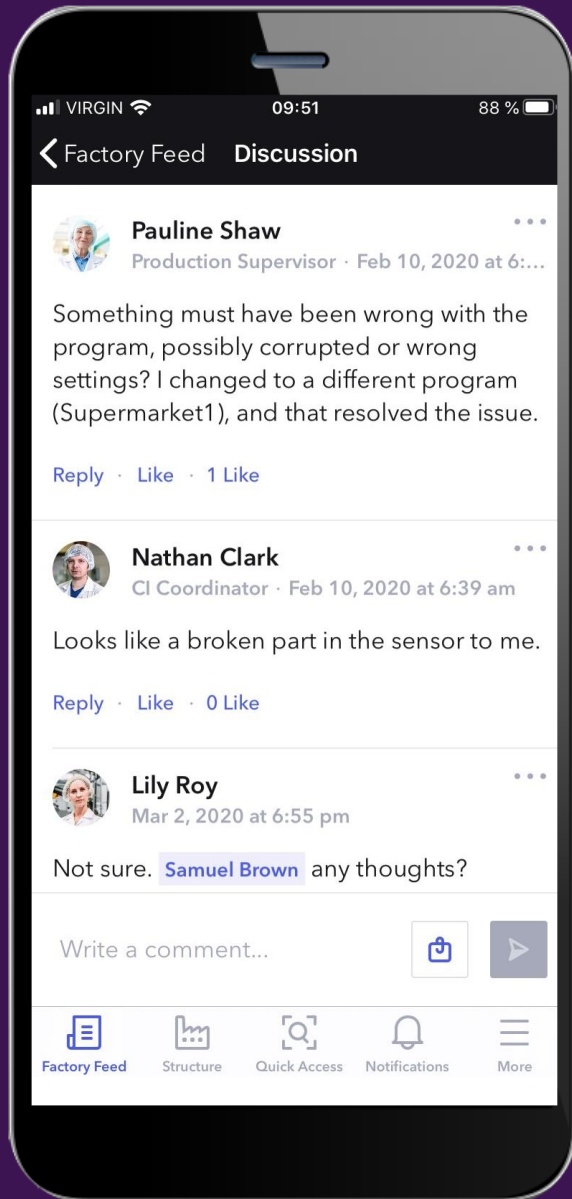
Call for Help

Digital Knowledge

Scan QR codes to quickly access a standardized library of instructions, videos and troubleshooting content.

Issues Management

Capture, track and resolve problems through call for help escalation and collaboration with subject matter experts.



Communication

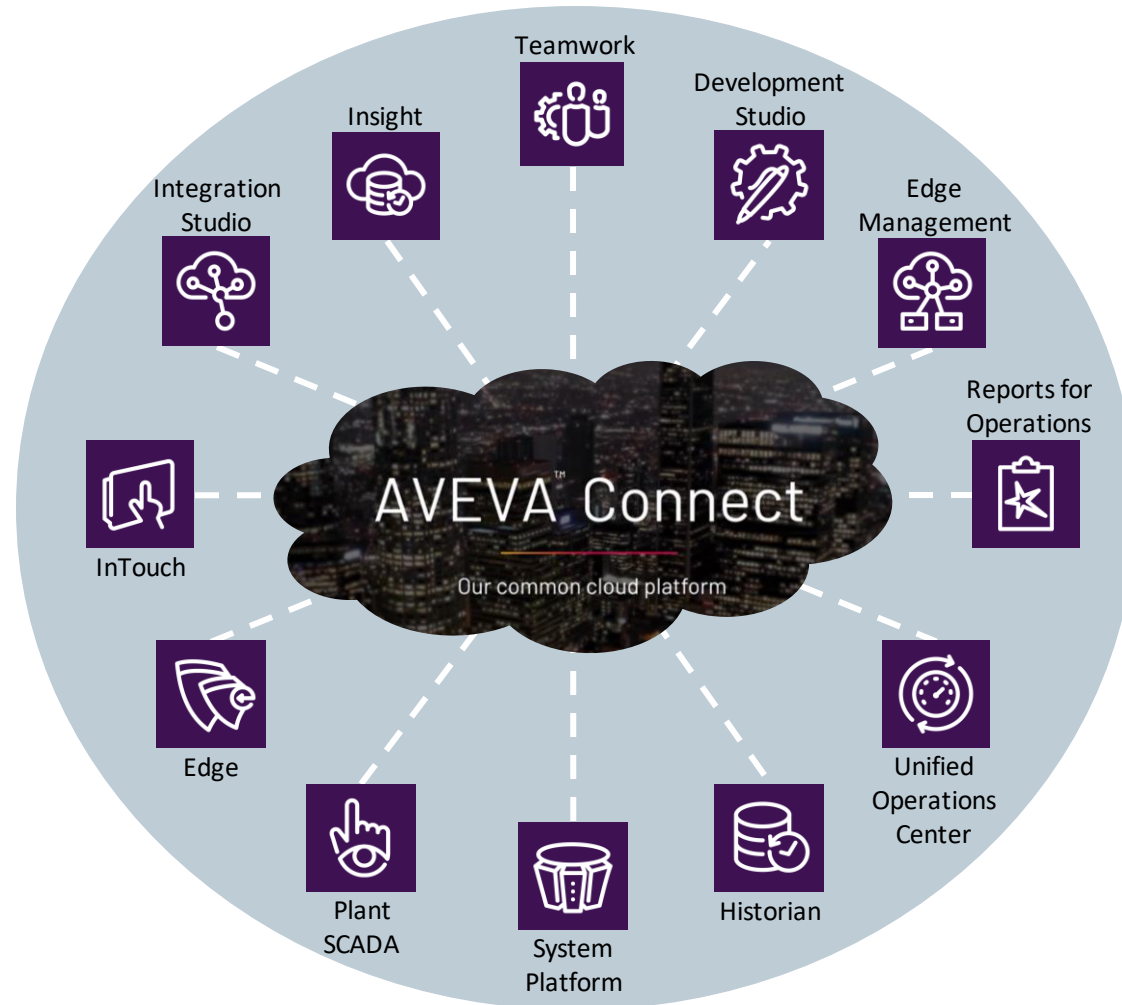
Designed to connect workers and teams using the cloud across shifts, departments, and plants, leading to better visibility and faster problem solving.

- Stay up to date with the news feed
- Filter notifications by type
- Posts organized by channel, type, equipment, workstation, product & user tagging
- Segment communication channels
- Promote engagement with posts
- Attach multimedia files
- Assign permissions and moderation

Teamwork Widget in OMI

AVEVA Operations Control

Hybrid SaaS Platform



Industrial Graphics hybrid cloud demonstration



AVEVA INSIGHT

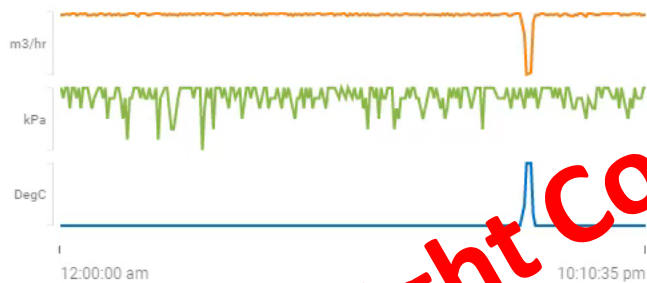
🔍 Search for assets, saved content, tags, or keywords.

📄 SUGGESTED CONTENT (4)

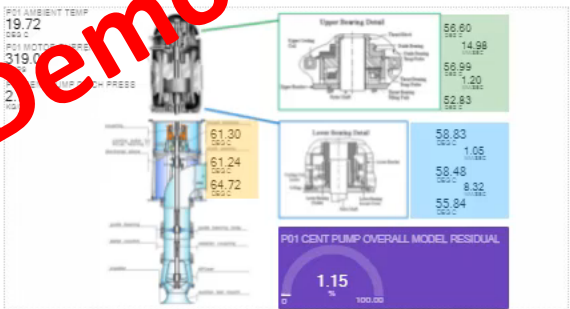
📊 DASHBOARD (6)

Darren 2

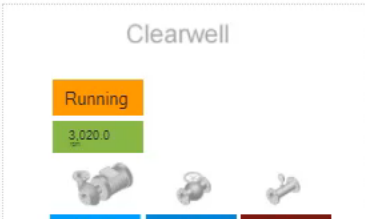
5/19/2021 12:00:00 am - 5/19/2021 10:09:43 pm



Vertical Motor Driven Pump

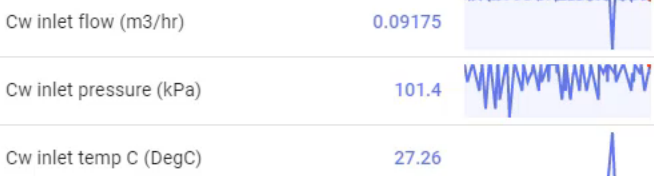


Mountain Clearwell Cycles - Graphic



Darren 1

5/19/2021 12:00:00 am - 5/19/2021 10:14:29 pm



NEWS FEED

🔄 Anomaly with score **85** occurred on asset **Clearwell** 2 hours ago



Is this useful? 👍 🗨️

🔄 Anomaly with score **100** occurred on asset **Clearwell** 2 hours ago

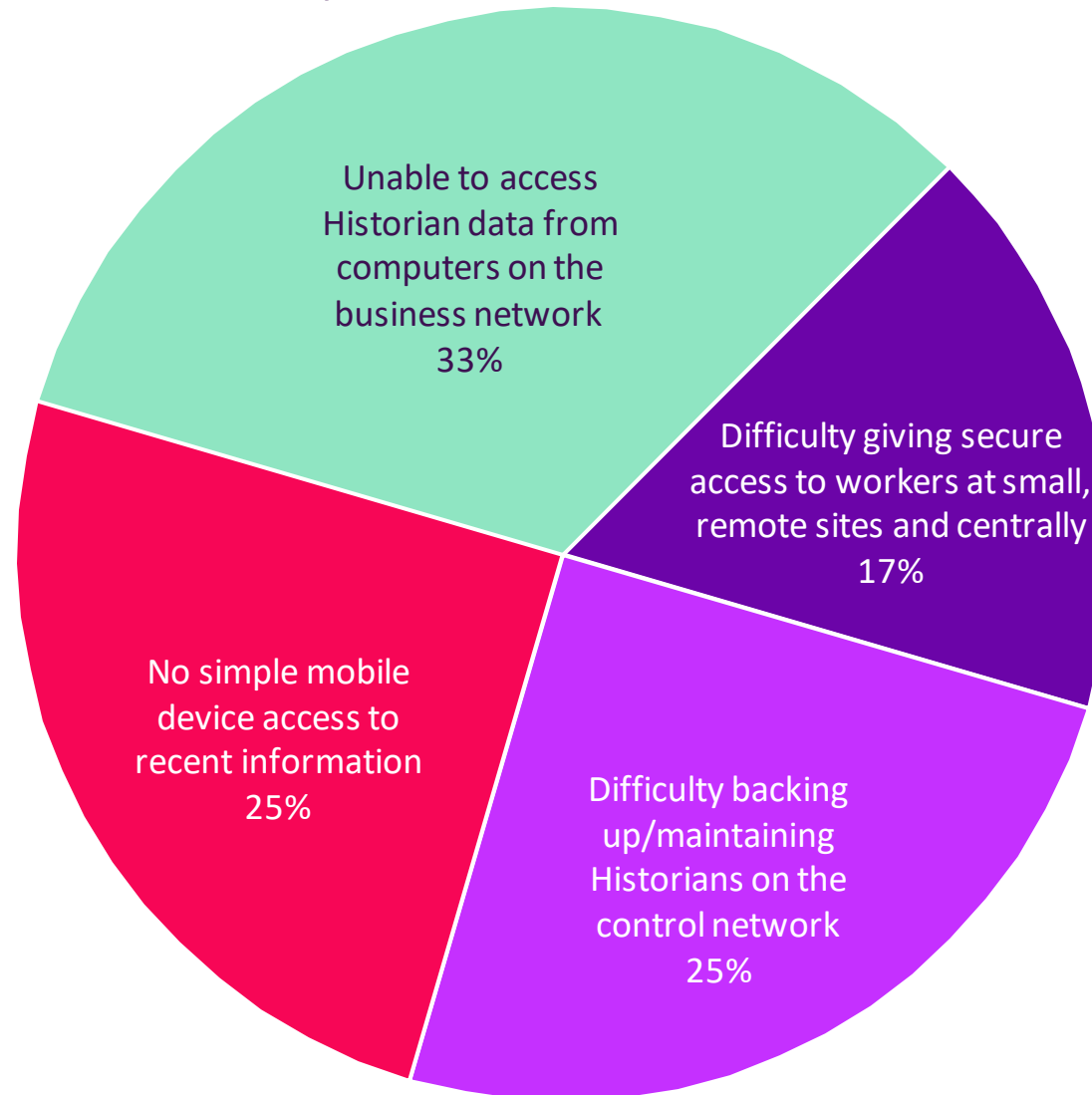


Insight Core Demo Placeholder



Insight Mobile Demo Placeholder

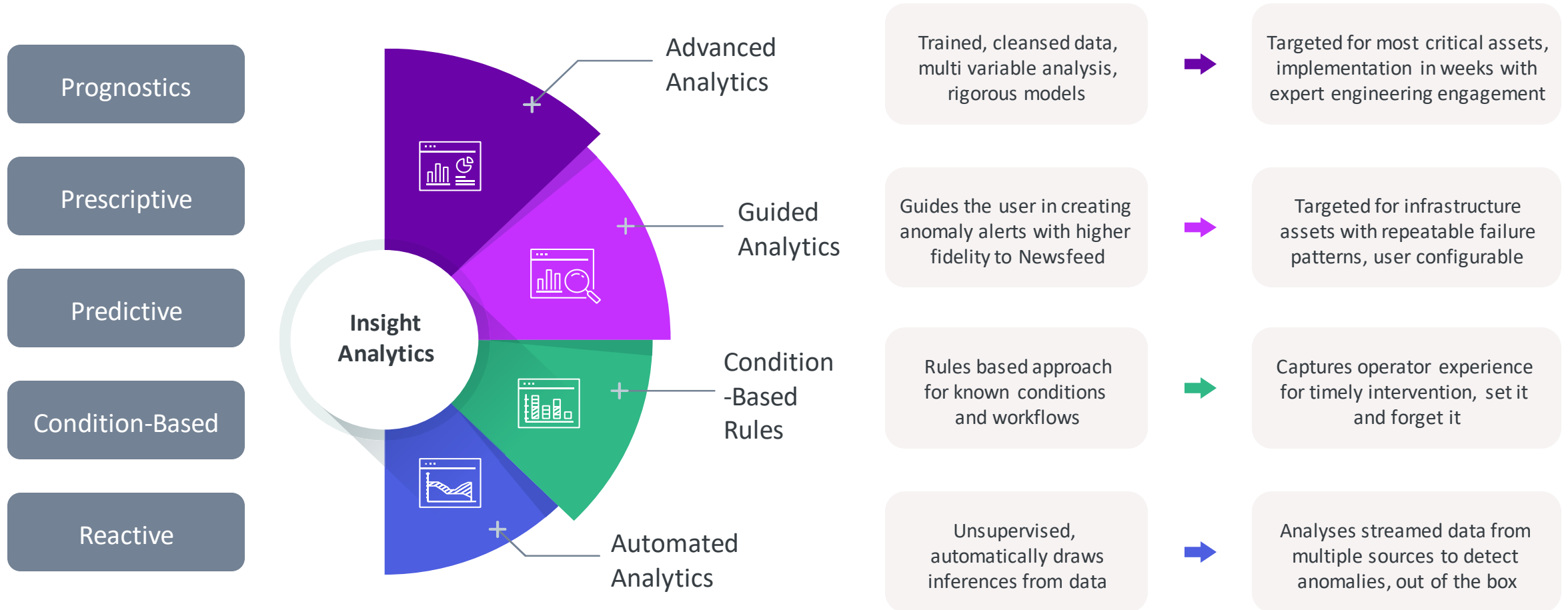
Which of the following network challenges currently interfere with accessing the Historian at your site?



Insight Getting Started Placeholder

Analytics & AI in Insight

The human experience meets Artificial Intelligence in the cloud



Questions?

Please wait for the microphone
State your name and company



Please remember to...

Navigate to this session in the mobile
app to complete the survey.



Thank you!



Brian Leonard

Product Management – Operations Control

- AVEVA
- brian.leonard@aveva.com




Elliott Middleton

Director, Product Management – Information

- AVEVA
- elliott.middleton@aveva.com

This presentation may include predictions, estimates, intentions, beliefs and other statements that are or may be construed as being forward-looking. While these forward-looking statements represent our current judgment on what the future holds, they are subject to risks and uncertainties that could result in actual outcomes differing materially from those projected in these statements. No statement contained herein constitutes a commitment by AVEVA to perform any particular action or to deliver any particular product or product features. Readers are cautioned not to place undue reliance on these forward-looking statements, which reflect our opinions only as of the date of this presentation.

The Company shall not be obliged to disclose any revision to these forward-looking statements to reflect events or circumstances occurring after the date on which they are made or to reflect the occurrence of future events.

 [linkedin.com/company/aveva](https://www.linkedin.com/company/aveva)

 [@avevagroup](https://twitter.com/avevagroup)

ABOUT AVEVA

AVEVA is a global leader in industrial software, sparking ingenuity to drive responsible use of the world's resources. The company's secure industrial cloud platform and applications enable businesses to harness the power of their information and improve collaboration with customers, suppliers and partners.

Over 20,000 enterprises in over 100 countries rely on AVEVA to help them deliver life's essentials: safe and reliable energy, food, medicines, infrastructure and more. By connecting people with trusted information and AI-enriched insights, AVEVA enables teams to engineer efficiently and optimize operations, driving growth and sustainability.

Named as one of the world's most innovative companies, AVEVA supports customers with open solutions and the expertise of more than 6,400 employees, 5,000 partners and 5,700 certified developers. With operations around the globe, we are headquartered in Cambridge, UK and listed on the London Stock Exchange's FTSE 100.

Learn more at www.aveva.com