

NOVEMBER 2022

---

# Deep dive into latest in AVEVA™ Operations Control – InTouch HMI

**AVEVA**



---

## Eduardo Ballina

AVEVA InTouch HMI Product Manager

- AVEVA
- [eduardo.ballina@aveva.com](mailto:eduardo.ballina@aveva.com)



## Steve Weinrich

R&D Director, Program Management

- AVEVA
- [steve.weinrich@aveva.com](mailto:steve.weinrich@aveva.com)

# Agenda

## New features in InTouch 2023 and their benefits

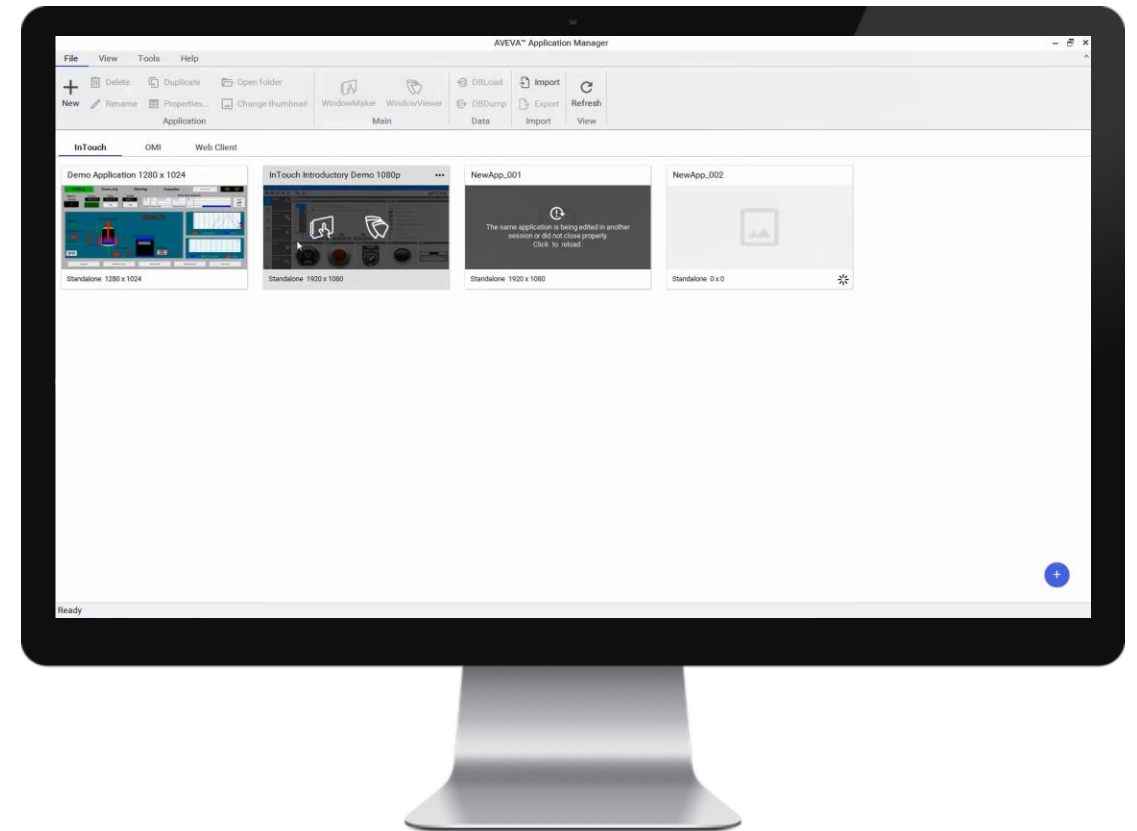
- UI/UX improvements
- Larger tagname dictionary
- Longer names
- SuperTags – New life!
- Map Web Widget
- Industrial Graphics – Graphic Version Management for the Cloud
- Script Editor Enhancements
- EAC Runtime Language Switching Enhancements
- Updated Demo
- InTouch 2023 Web Server

# InTouch HMI 2023

UI/UX improvements – New look and feel. Streamlined workflows. Engineering Efficiency.

- **Application Manager**

- New Ribbon Bar
- New and Enhanced Workflows
- New icons better identify locked and new applications

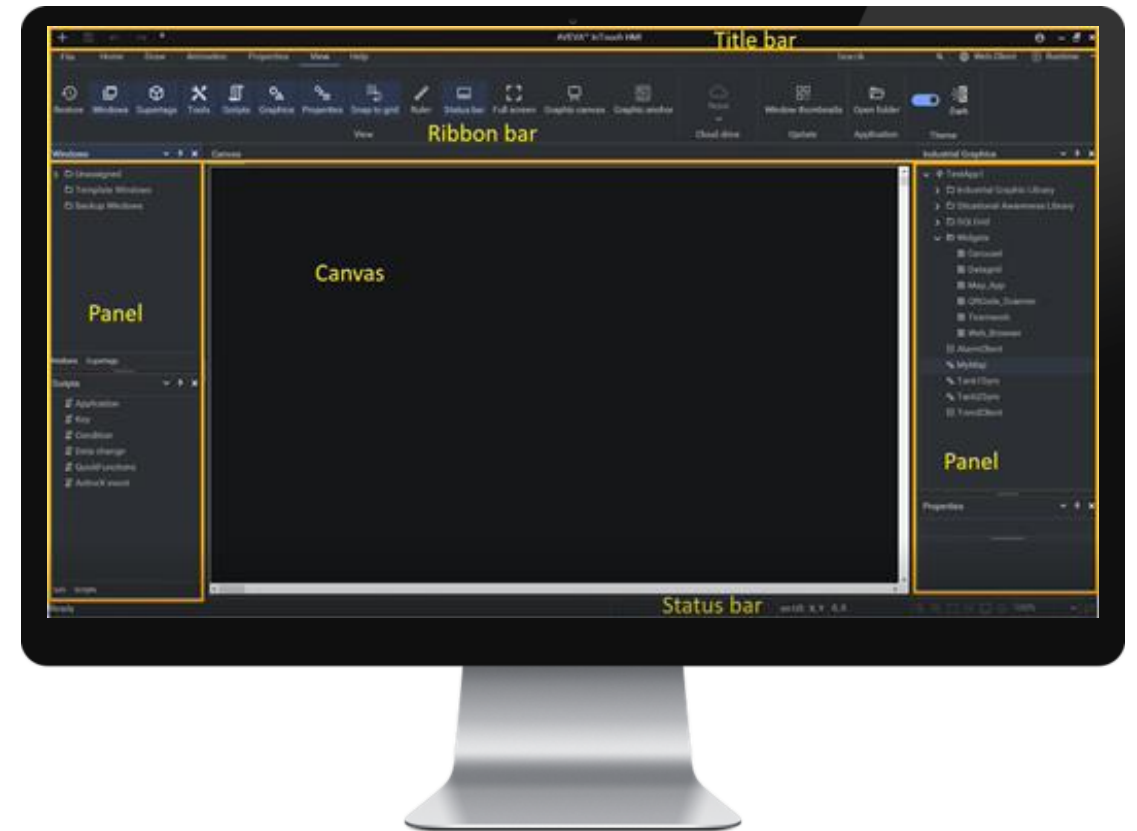


# InTouch HMI 2023

UI/UX improvements - New look and feel. Streamlined workflows. Engineering Efficiency.

- **InTouch WindowMaker**

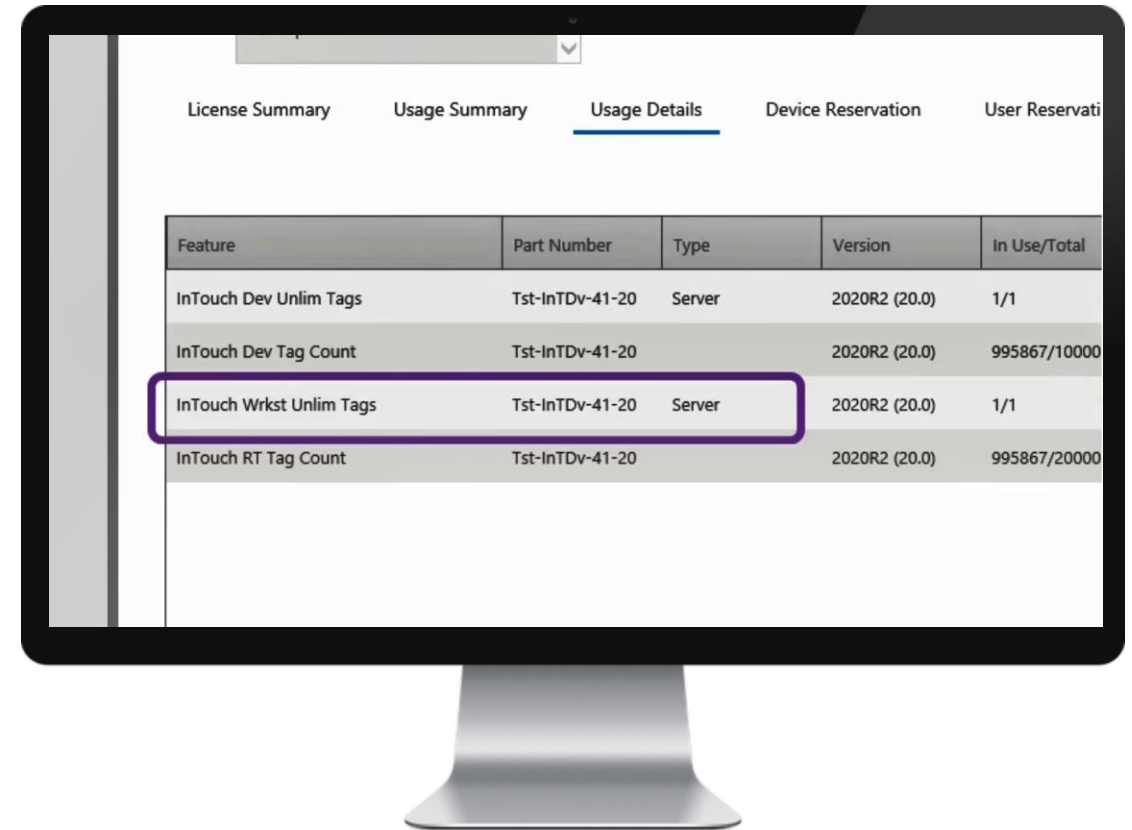
- Modern UI/UX Improvements
- New Ribbon bar
- New and enhanced workflows
- Dark/Light mode
- Backstage with consolidated configuration



# InTouch HMI 2023

Larger tagname dictionary - Unleashing the power. Higher scalability.

- Larger Tag counts!
- New Tag count licenses
  - **100K Tags license**
  - **Unlimited Tag license** (Tested to 300K Tags) (**FLEX**)

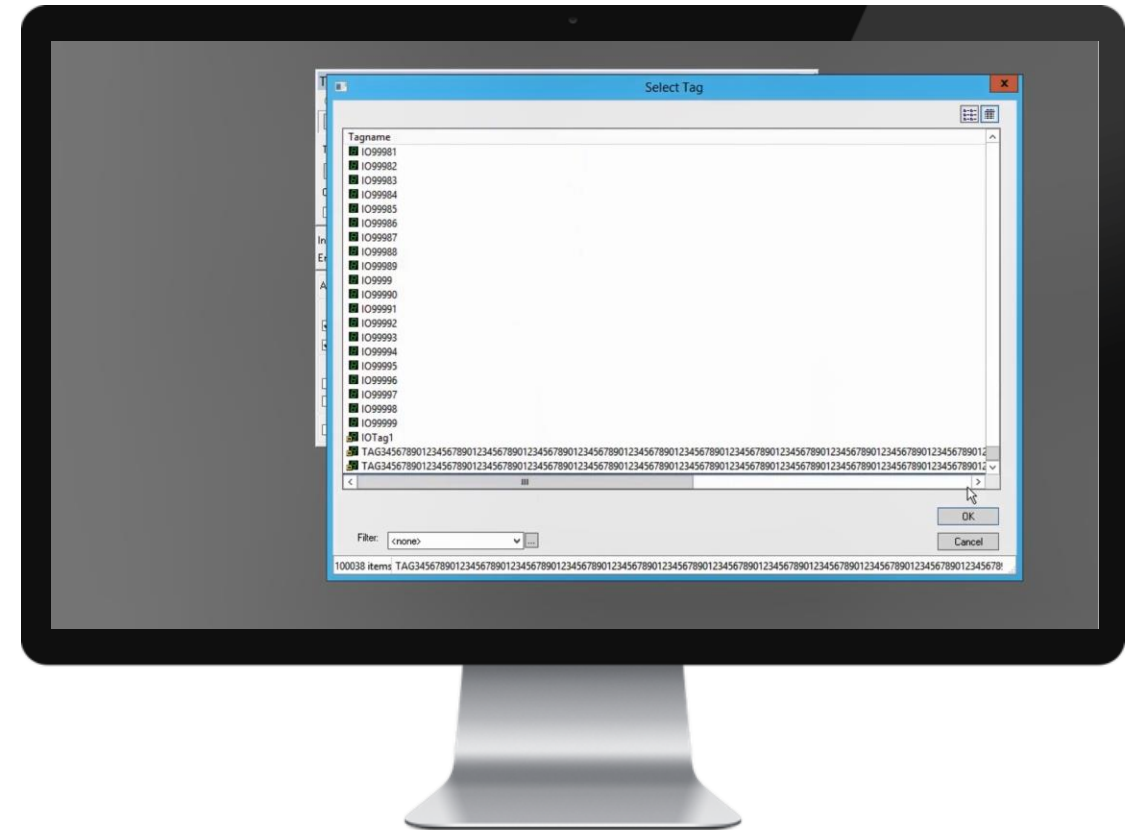


License Summary Usage Summary Usage Details Device Reservation User Reservati				
Feature	Part Number	Type	Version	In Use/Total
InTouch Dev Unlim Tags	Tst-InTDv-41-20	Server	2020R2 (20.0)	1/1
InTouch Dev Tag Count	Tst-InTDv-41-20		2020R2 (20.0)	995867/10000
InTouch Wrkst Unlim Tags	Tst-InTDv-41-20	Server	2020R2 (20.0)	1/1
InTouch RT Tag Count	Tst-InTDv-41-20		2020R2 (20.0)	995867/20000



## Longer names - Unleashing the power

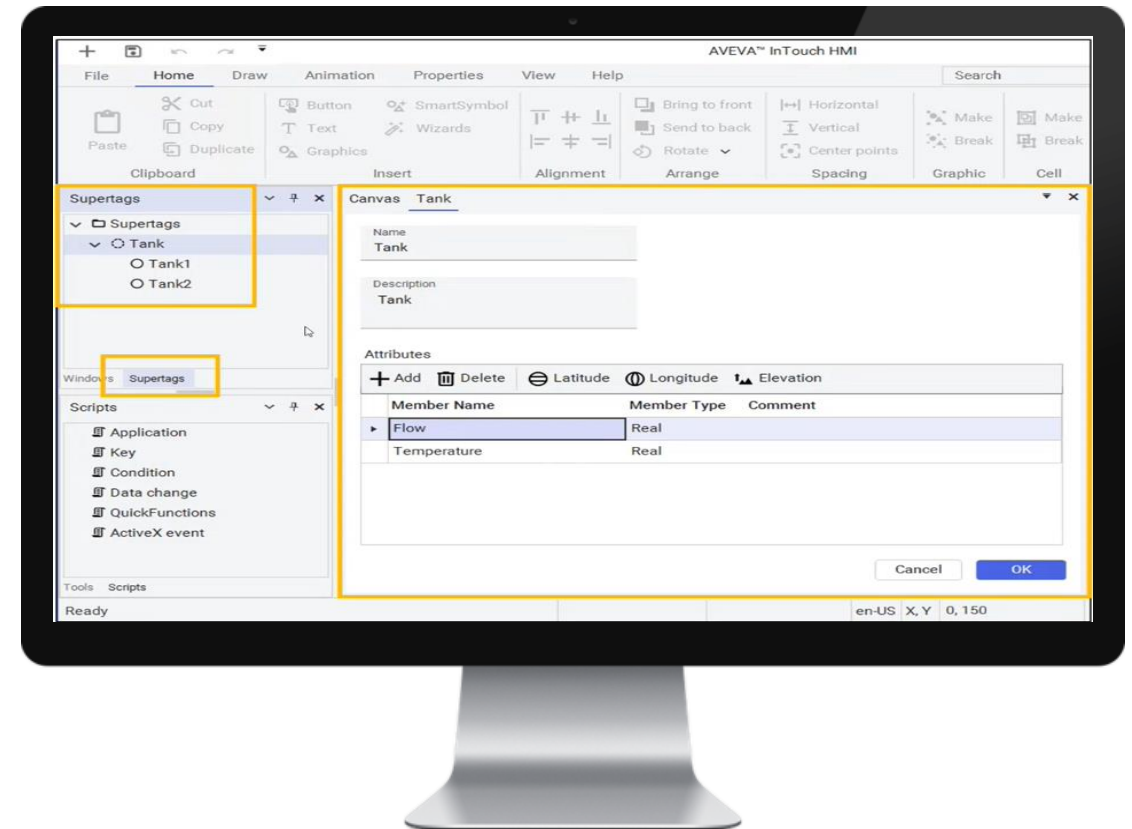
- **Longer InTouch tag names, tag description and item names.**
  - Tag name length was extended *from 32 to 128 characters*
  - Tag description length was extended *from 50 to 160 characters*
  - Item name length was extended *from 79 to 254 characters*



# InTouch HMI 2023

SuperTags – New life! Increased visibility. Enhanced Workflows. Higher Engineering Efficiency.

- New life!
- More visibility
- Improved workflows
- Option to include SuperTag definition in the application directory or common data directory.

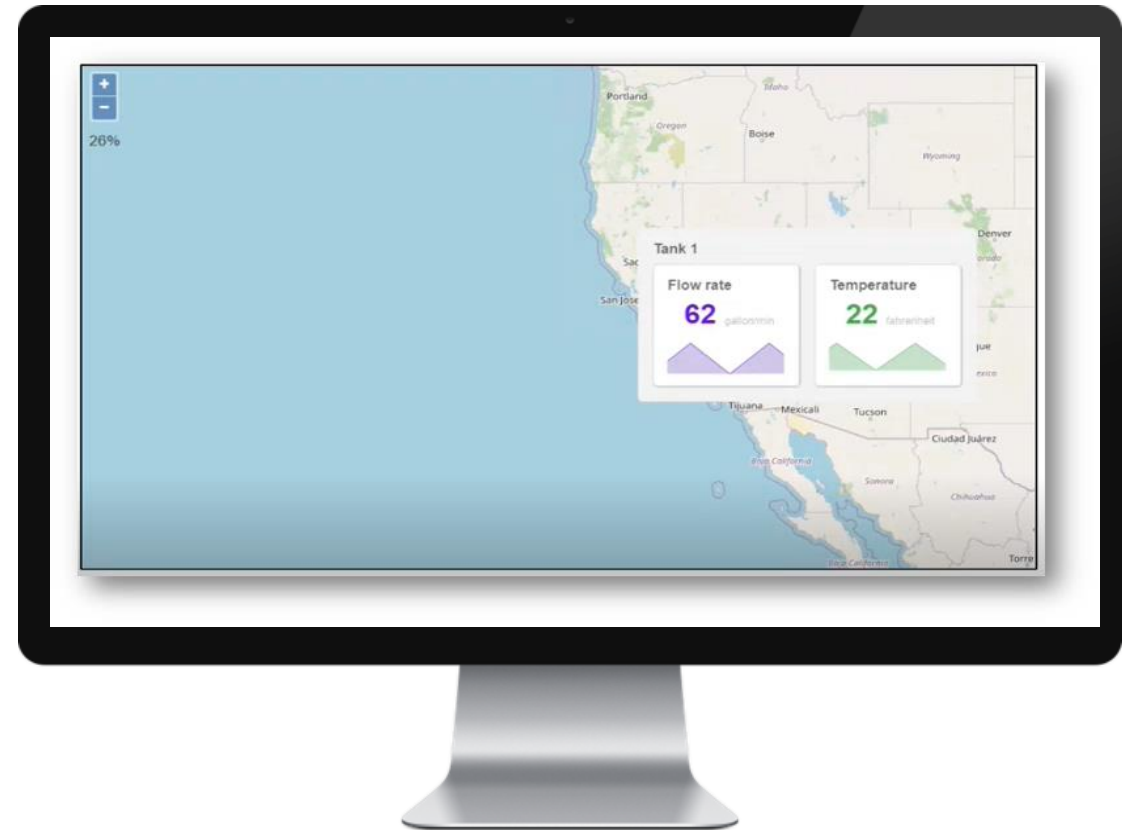




# InTouch HMI 2023

## Map Web Widget – Addressing the needs of Geographically Distributed applications.

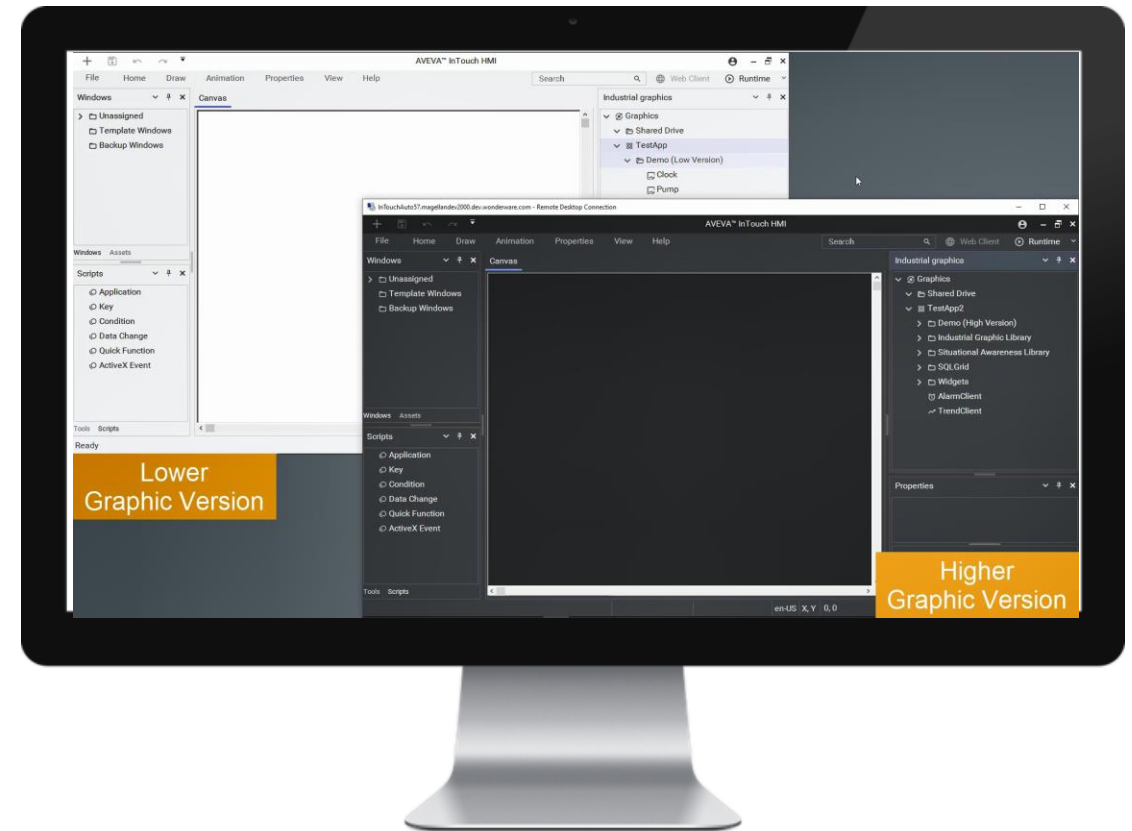
- Based on the OMI Map App, in the form of a Web Widget
- Supported in InTouch WindowViewer and the Web Client
- You can bind to assets using SuperTags and Industrial Graphics



# InTouch HMI 2023

## Industrial Graphics – Graphic Version Management for the Cloud

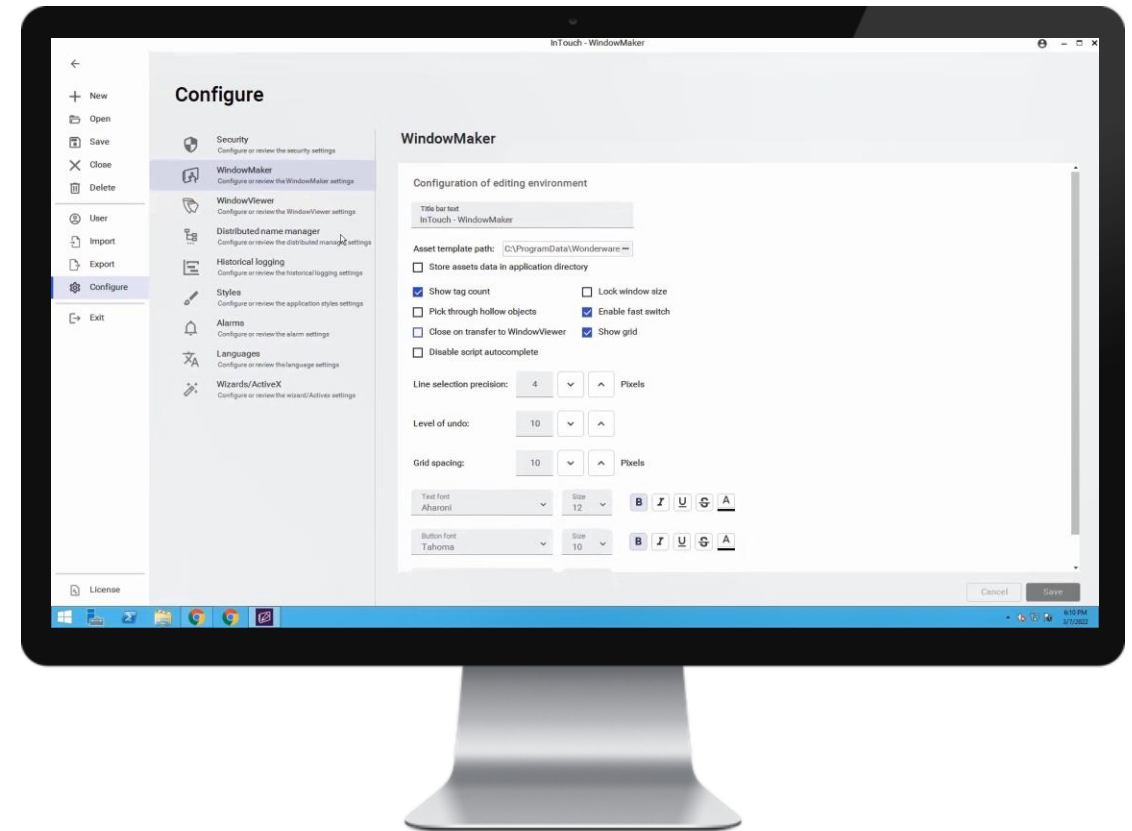
- AVEVA Industrial Graphic storage in the cloud was introduced in 2020 R2.
- 2023 and newer releases will bring new AIG graphic versions
- Additional Metadata in the graphics will help us support Graphics developed with different releases of InTouch



# InTouch HMI 2023

## Script Editor Enhancements – More flexible user experience.

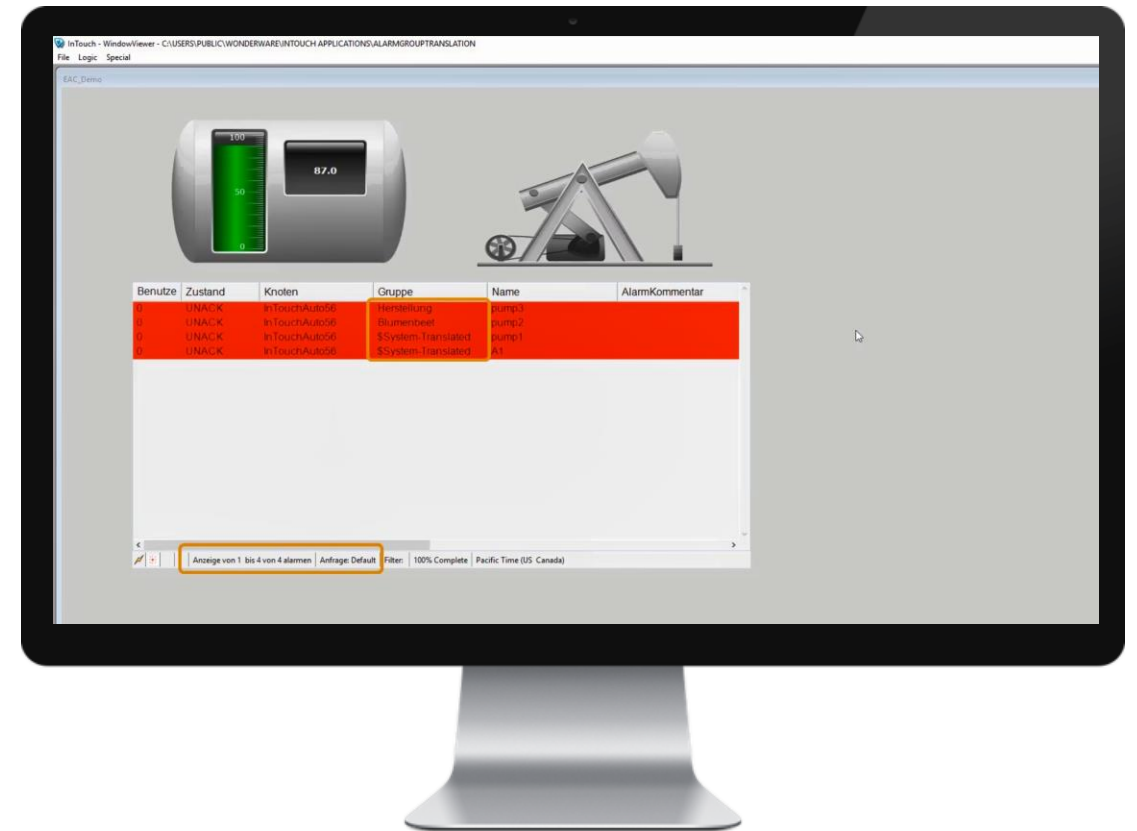
- Ability to change default font and font size
- Ability to disable Autocomplete via configuration
- Ability to enable/disable AutoComplete while at the script editor
- Access Zoom from menu and toolbar



# InTouch HMI 2023

## EAC Runtime Language Switching Enhancements – Improved experience for international markets.

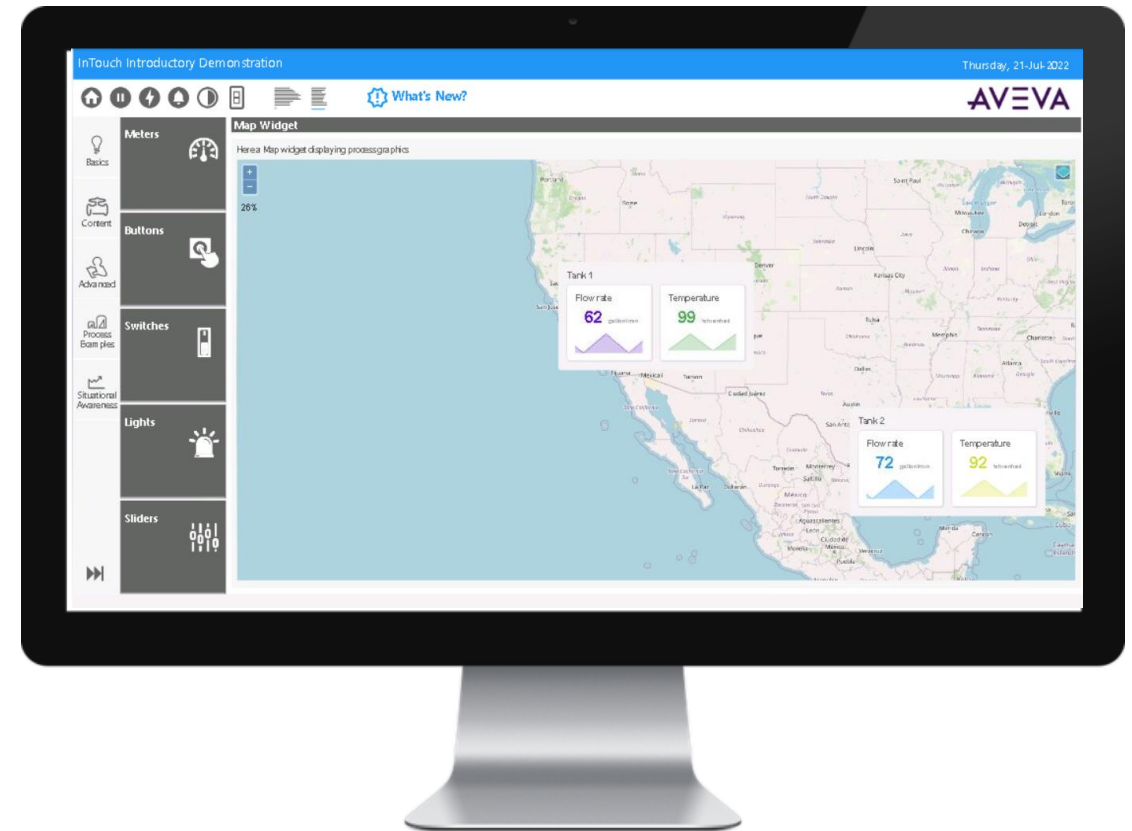
- Language Switching support for Alarm Group Name.
  - Group name translation
  - Scripting support using a translated Alarm Group Name
  - Query/Filters using a translated alarm Group Name.
- Group name translation support in the Language Assistant
- Status Bar Message



# InTouch HMI 2023

## Updated Demo

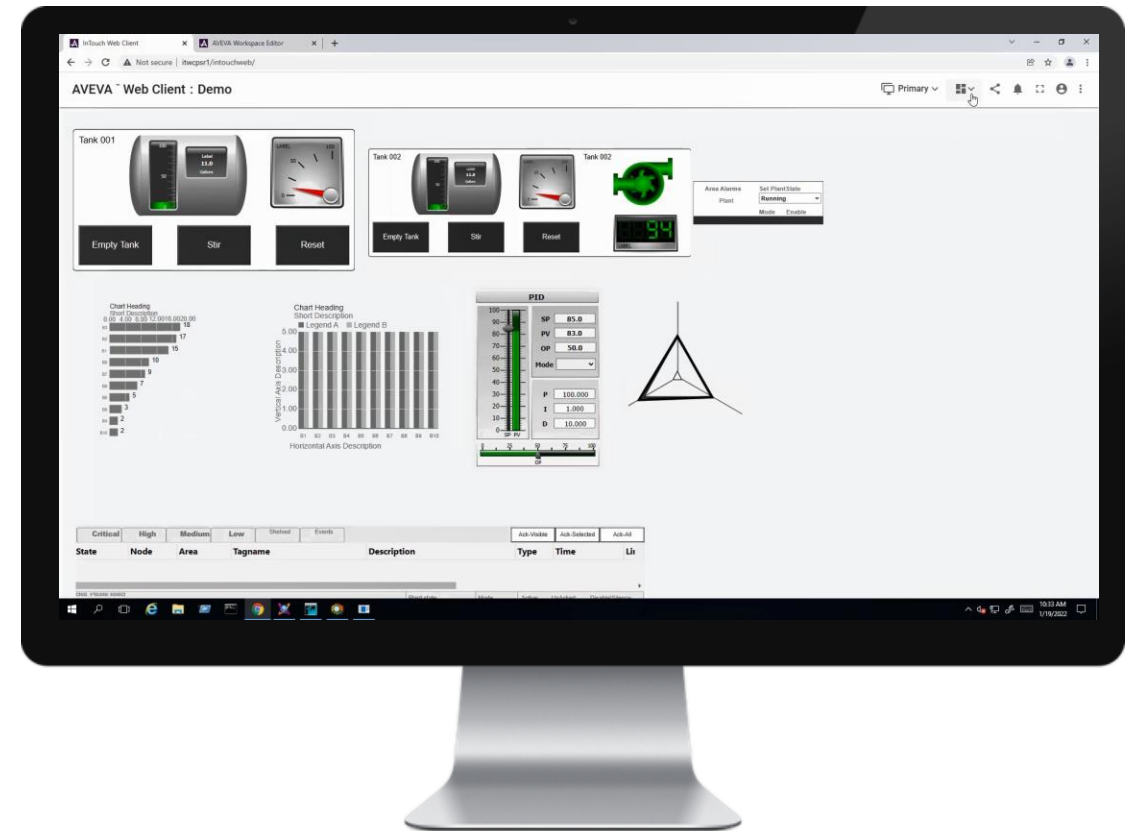
- Updated InTouch Introductory Demo application



# InTouch 2023 Web Server

More power. More flexibility. Further empowering the connected user.

- Personal Workspaces
  - Empower users to create their own dashboards at runtime via the web client (Available via FLEX)
- New client pack licenses (5, 10, 25 clients) in addition to the Unlimited Client license.





# Call to Action

## For More Information

- Visit our Expo Area.
- Contact your local AVEVA Distributor
- Visit <https://www.aveva.com/en/products/intouch-hmi/>
- Contact me at [eduardo.ballina@aveva.com](mailto:eduardo.ballina@aveva.com)



# Questions?

Please wait for the microphone.  
State your name and company.



# Please remember to...

Navigate to this session in the mobile  
app to complete the survey.




# Thank you!



This presentation may include predictions, estimates, intentions, beliefs and other statements that are or may be construed as being forward-looking. While these forward-looking statements represent our current judgment on what the future holds, they are subject to risks and uncertainties that could result in actual outcomes differing materially from those projected in these statements. No statement contained herein constitutes a commitment by AVEVA to perform any particular action or to deliver any particular product or product features. Readers are cautioned not to place undue reliance on these forward-looking statements, which reflect our opinions only as of the date of this presentation.

The Company shall not be obliged to disclose any revision to these forward-looking statements to reflect events or circumstances occurring after the date on which they are made or to reflect the occurrence of future events.

 [linkedin.com/company/aveva](https://www.linkedin.com/company/aveva)

 [@avevagroup](https://twitter.com/avevagroup)

#### ABOUT AVEVA

AVEVA is a global leader in industrial software, sparking ingenuity to drive responsible use of the world's resources. The company's secure industrial cloud platform and applications enable businesses to harness the power of their information and improve collaboration with customers, suppliers and partners.

Over 20,000 enterprises in over 100 countries rely on AVEVA to help them deliver life's essentials: safe and reliable energy, food, medicines, infrastructure and more. By connecting people with trusted information and AI-enriched insights, AVEVA enables teams to engineer efficiently and optimize operations, driving growth and sustainability.

Named as one of the world's most innovative companies, AVEVA supports customers with open solutions and the expertise of more than 6,400 employees, 5,000 partners and 5,700 certified developers. With operations around the globe, we are headquartered in Cambridge, UK and listed on the London Stock Exchange's FTSE 100.

Learn more at [www.aveva.com](https://www.aveva.com)