

NOVEMBER 2022

AVEVA™ PI Vision™: Leveraging the latest capabilities

Amit Dutta, AVEVA Sr. Technical Product Manager
John Swartzentruber, AVEVA R&D Manager

AVEVA

Agenda

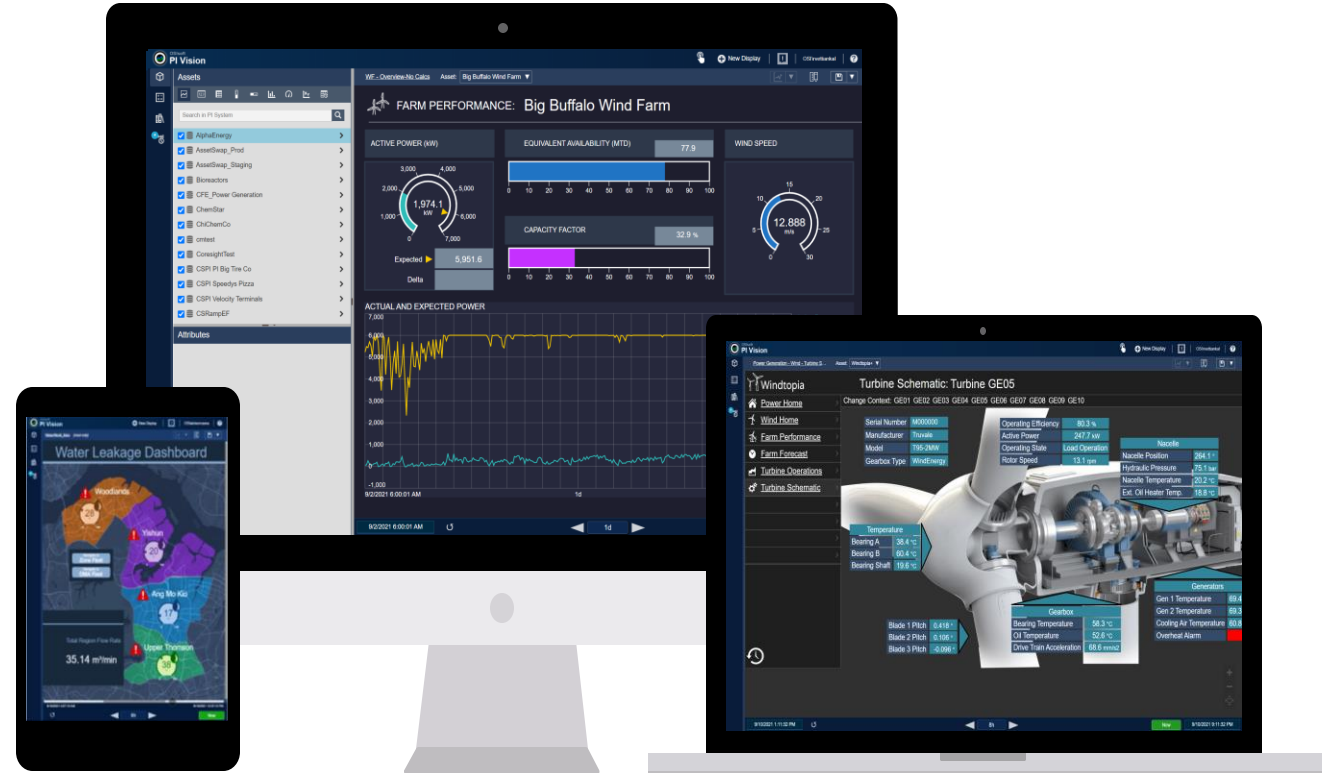
AVEVA PI Vision Overview

Highlights of Recently Released Capabilities

Demo

AVEVA PI Vision

- An easy to use, self-service, scalable visualization solution
- Access real-time data from any device – phone, tablet, laptop, desktop
- Share real-time displays across your organization



AVEVA PI Vision 2022

Enhanced event analysis and display standardization

- Overlay attributes in Event Comparison trends
- Freehand zoom and pan Event Details trends
- Maximize a trend
- Show traces and scales with colors and line styles that ease visual comprehension and prioritization
- Align child event frames by name
- Expand/collapse all event frames on Gantt chart
- Switch between different units of measure at the symbol level
- Custom display default settings to organizational standards
- Display trend value while moving the trend cursor
- Integrated MUI Kit



PI Vision has been re-branded to AVEVA PI Vision.

Powerful capabilities added in recent releases

Features that have increased manageability of the system and value and scope of data

2022

- Enhanced event frame visualization
- Trend cursor on drag
- Unit of measure support
- Default display and symbol settings

2021

- Asset based calculations
- Offline display management
- Attributes in Events Table

2020

- Tag based calculations
- Multiple time contexts
- Display usage monitoring
- Additional PI ProcessBook migration

2019

- PI ProcessBook migration
- Ad hoc trending

Demo

AVEVA

Powerful capabilities added in recent releases

Features that have increased manageability of the system and value and scope of data

2022

- Enhanced event frame visualization
- Trend cursor on drag
- Unit of measure support
- Default display and symbol settings

2021

- Asset based calculations
- Offline display management
- Attributes in Events Table

2020

- Tag based calculations
- Multiple time contexts
- Display usage monitoring
- Additional PI ProcessBook migration

2019

- PI ProcessBook migration
- Ad hoc trending



Amit Dutta

Sr Technical Product Manager

- AVEVA
- Amit.Dutta@aveva.com



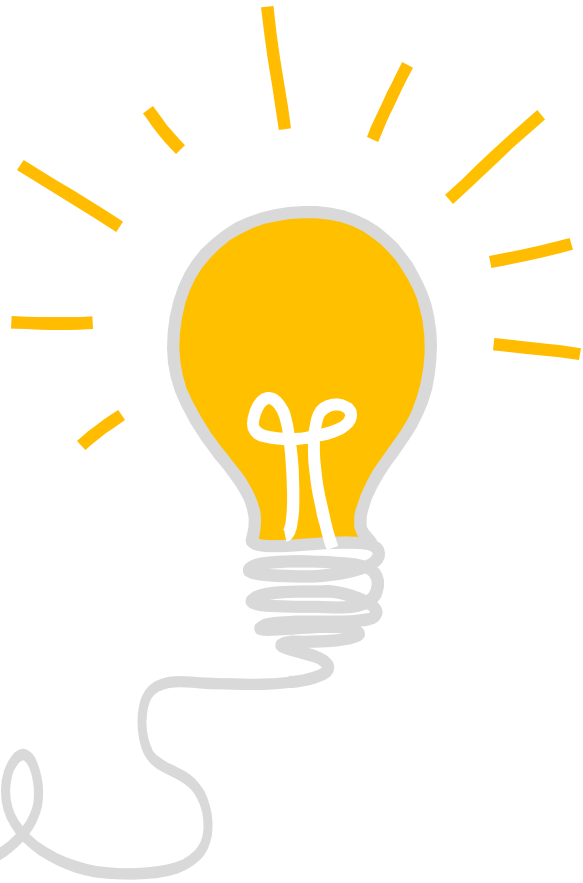
John Swartzentruber

R&D Manager

- AVEVA
- John.Swartzentruber@aveva.com



How can you influence the AVEVA™ PI System™ roadmap?



<https://feedback.aveva.com>

Let us know your product feedback!

Questions?

Please wait for the microphone
State your name and company



Please remember to...

Navigate to this session in the mobile
app to complete the survey.



Thank you

AVEVA

This presentation may include predictions, estimates, intentions, beliefs and other statements that are or may be construed as being forward-looking. While these forward-looking statements represent our current judgment on what the future holds, they are subject to risks and uncertainties that could result in actual outcomes differing materially from those projected in these statements. No statement contained herein constitutes a commitment by AVEVA to perform any particular action or to deliver any particular product or product features. Readers are cautioned not to place undue reliance on these forward-looking statements, which reflect our opinions only as of the date of this presentation.

The Company shall not be obliged to disclose any revision to these forward-looking statements to reflect events or circumstances occurring after the date on which they are made or to reflect the occurrence of future events.

 [linkedin.com/company/aveva](https://www.linkedin.com/company/aveva)

 [@avevagroup](https://twitter.com/avevagroup)

ABOUT AVEVA

AVEVA is a global leader in industrial software, sparking ingenuity to drive responsible use of the world's resources. The company's secure industrial cloud platform and applications enable businesses to harness the power of their information and improve collaboration with customers, suppliers and partners.

Over 20,000 enterprises in over 100 countries rely on AVEVA to help them deliver life's essentials: safe and reliable energy, food, medicines, infrastructure and more. By connecting people with trusted information and AI-enriched insights, AVEVA enables teams to engineer efficiently and optimize operations, driving growth and sustainability.

Named as one of the world's most innovative companies, AVEVA supports customers with open solutions and the expertise of more than 6,400 employees, 5,000 partners and 5,700 certified developers. With operations around the globe, we are headquartered in Cambridge, UK and listed on the London Stock Exchange's FTSE 100.

Learn more at www.aveva.com