

OCTOBER 24, 2023

MES portfolio overview and roadmap

Tom Troy – Leader, Operations and Execution Portfolio

AVEVA

Portfolio overview



Digital transformation – a business imperative

The challenges

Improving
agility and
consistency in
manufacturing

Safeguarding
product quality,
safety and
compliance

Minimizing
waste
and losses

Improving
productivity
and efficiency

The initiatives



Empower
employees

- Transform the way you execute work across a team
- Enable natural collaboration between roles



Engage
customers

- Safety/regulation compliance
- End-to-end traceability
- New product introductions



Optimize
operations

- Measure and improve operations performance
- Continuously improve efficiency and sustainability



Transform
offerings

- Demand-driven
- Resilient
- Increased value
- New business models

AVEVA Operations and Execution portfolio – empowering customers to digitally transform their manufacturing operations to become more agile, optimized, sustainable and customer-focused.

Review of the Manufacturing Execution System (MES) Portfolio

Batch/recipe mgt. apps

AVEVA

Recipe Management

AVEVA

Batch Management

MES/MOM apps

AVEVA

MES

AVEVA

Production Management

AVEVA

Insight

“Companion” apps

AVEVA

Work Tasks

AVEVA

Enterprise Integration

planet  together

Planning and Scheduling

Review of the MES Portfolio

AVEVA Batch and Recipe Management (On-Premise)

Effectively manages flexible batch processes in process and hybrid industries.



Dirk
Kozian

AVEVA MES (On-Premise)

Operations mgt. - Improves production execution consistency, visibility and agility in hybrid industries.

Performance mgt. - Increases plant asset utilization and performance by providing accurate information on equipment downtime and efficiency.

Quality mgt. - Improves product quality and consistency through real-time statistical process control and analysis.



Jeff Barkehanai

Review of the MES Portfolio

AVEVA Insight - Equipment Efficiency (Cloud/SaaS Offering)

Increases plant asset utilization and operational performance by providing accurate information on equipment downtime and efficiency.



Jeff Barkehanai

AVEVA Model-Driven MES Application Content

Pre-assembled, extensible MES application content (business rules and UIs) that accelerates time to value for MES deployments.



JP Caron

AVEVA Production Management (On-Premise)

Optimizes the mining supply chain, maximizes the utilization of all operating assets.

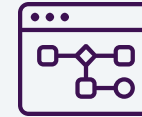


Nina Nicholls

Review of the MES Portfolio

AVEVA Work Tasks (On-Premise & Cloud/SaaS)

Orchestrates plant-level business processes across disparate domains (people, processes and systems).



Dirk Kozyan

AVEVA Enterprise Integration (On-Premise)

Facilitates integration of plant floor applications to enterprise solutions.



Jeff Barkehanai

Production Planning and Scheduling (On-Premise)

Improves production schedule performance, manages critical constraints, and eliminates uncertainties to reduce risk.



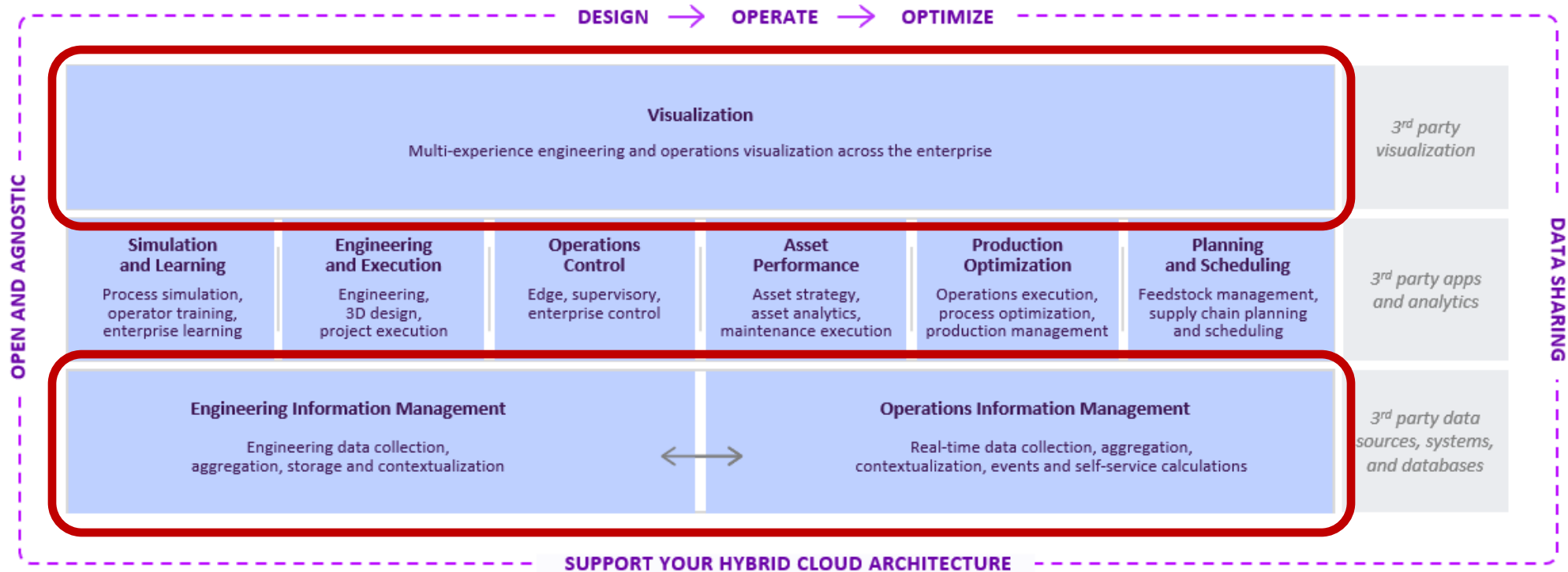
JP Caron

Portfolio strategy and timelines

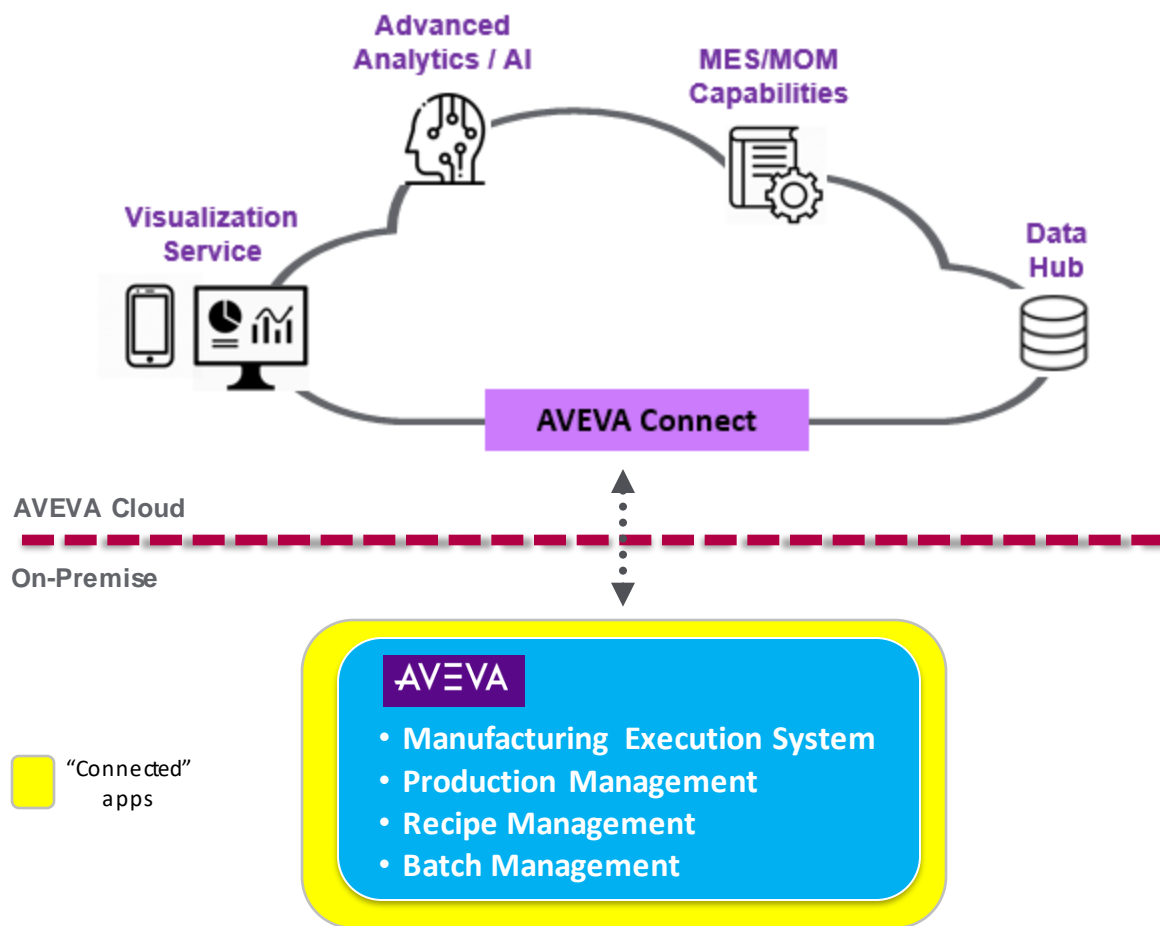


Aligning with the broader AVEVA strategy

AVEVA Operations and Execution Portfolio aligns with the broader AVEVA strategy of providing a **single “industrial information management” and “visualization” service** that spans from engineering to operations.



Evolving to a hybrid cloud architecture



Native cloud capabilities

Light-weight MES/MOM capabilities, fast time to value

Value-add cloud apps and services

These cloud-based apps and services extend our on-premise (edge) and cloud-based capabilities with:

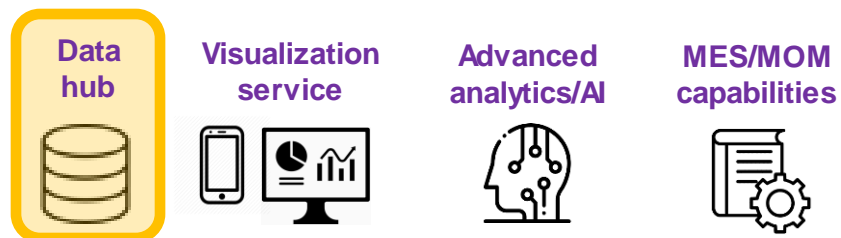
- **Data hub** - enterprise data historization and sharing
- **Visualization service** - enterprise visualization and dashboarding
- **Advanced analytics/AI** - predictive and prescriptive analytics

“Connected” applications

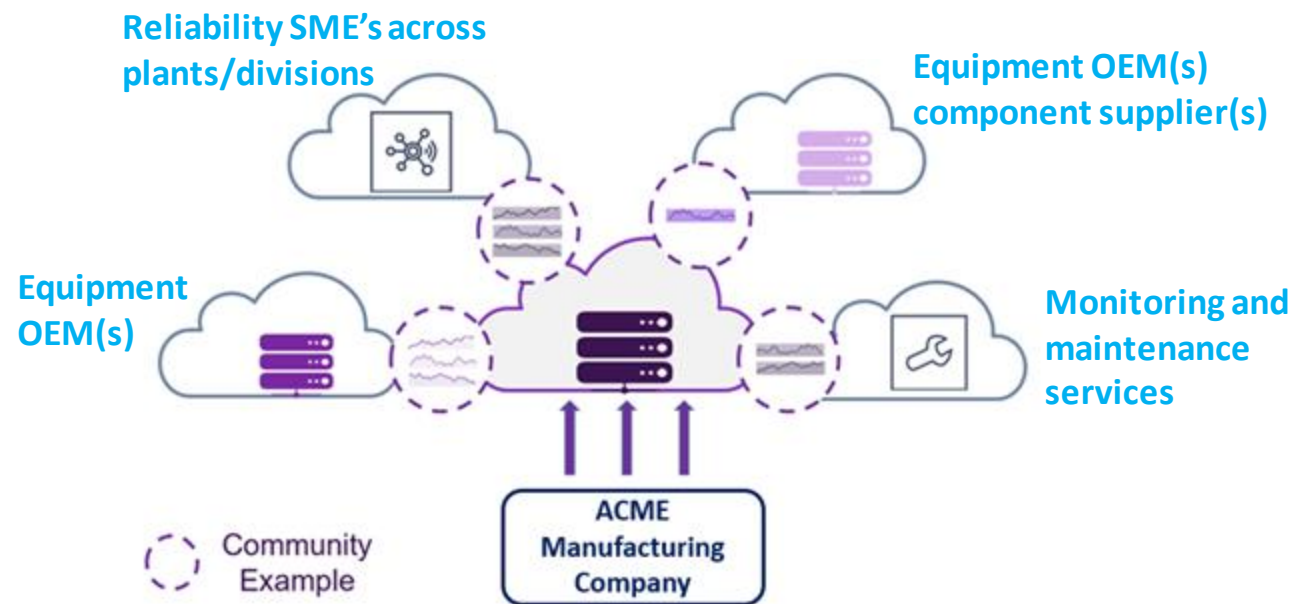
- Consume value-add cloud services from AVEVA™ Connect
- Content and config managed centrally from AVEVA Connect

Evolving to a hybrid cloud architecture

Enterprise data management



AVEVA™ Data Hub provides a **cloud-based industrial information management service** that spans engineering and operations domains to deliver advanced **data collection, aggregation, storage, contextualization and data sharing capabilities.**



Evolving to a hybrid cloud architecture

Enterprise visualization

Data hub



Visualization service



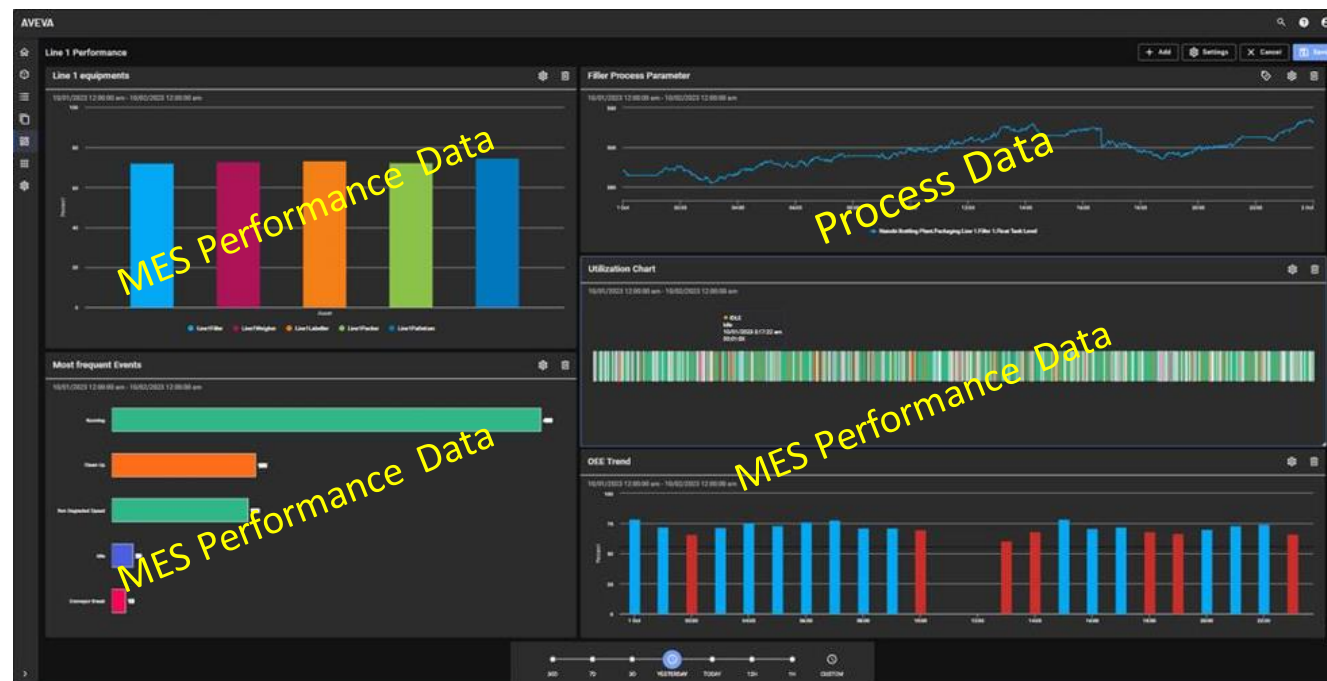
Advanced analytics/AI



MES/MOM capabilities

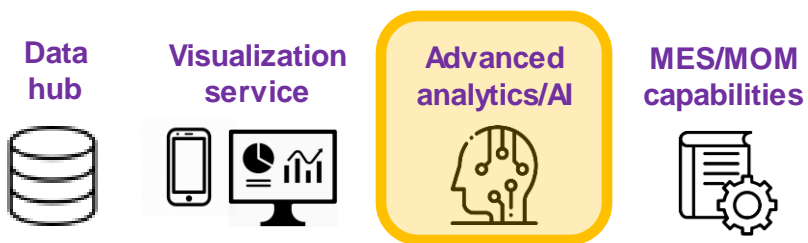


AVEVA Enterprise Visualization provides a **cloud-based visualization service** that spans engineering and operations domains to deliver **advanced visualization and analysis/ analytics capabilities**.



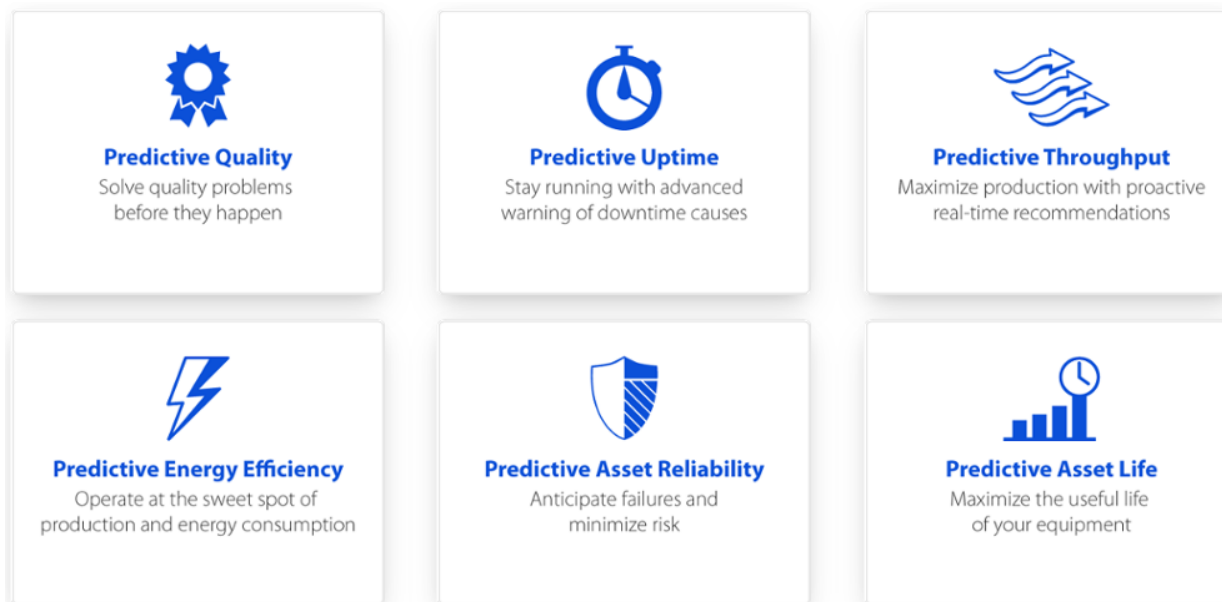
Evolving to a hybrid cloud architecture

Predictive and prescriptive analytics



AVEVA Advanced Analytics enables **continuous production optimization** through **advanced analytics and machine learning (ML) capabilities**.

Out-of-the-box anomaly models for hybrid manufacturing processes - batch, continuous and discrete.



Evolving to a hybrid cloud architecture

Native MES/MOM capabilities

Data hub



Visualization service



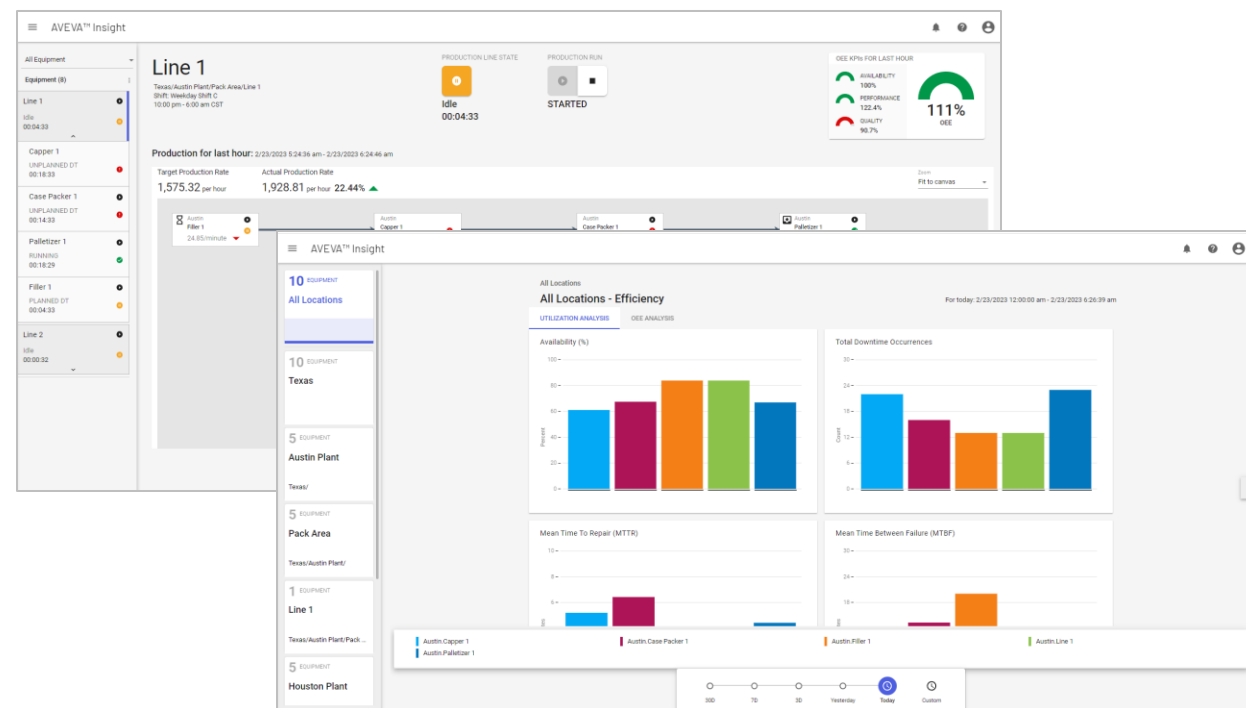
Advanced analytics/AI



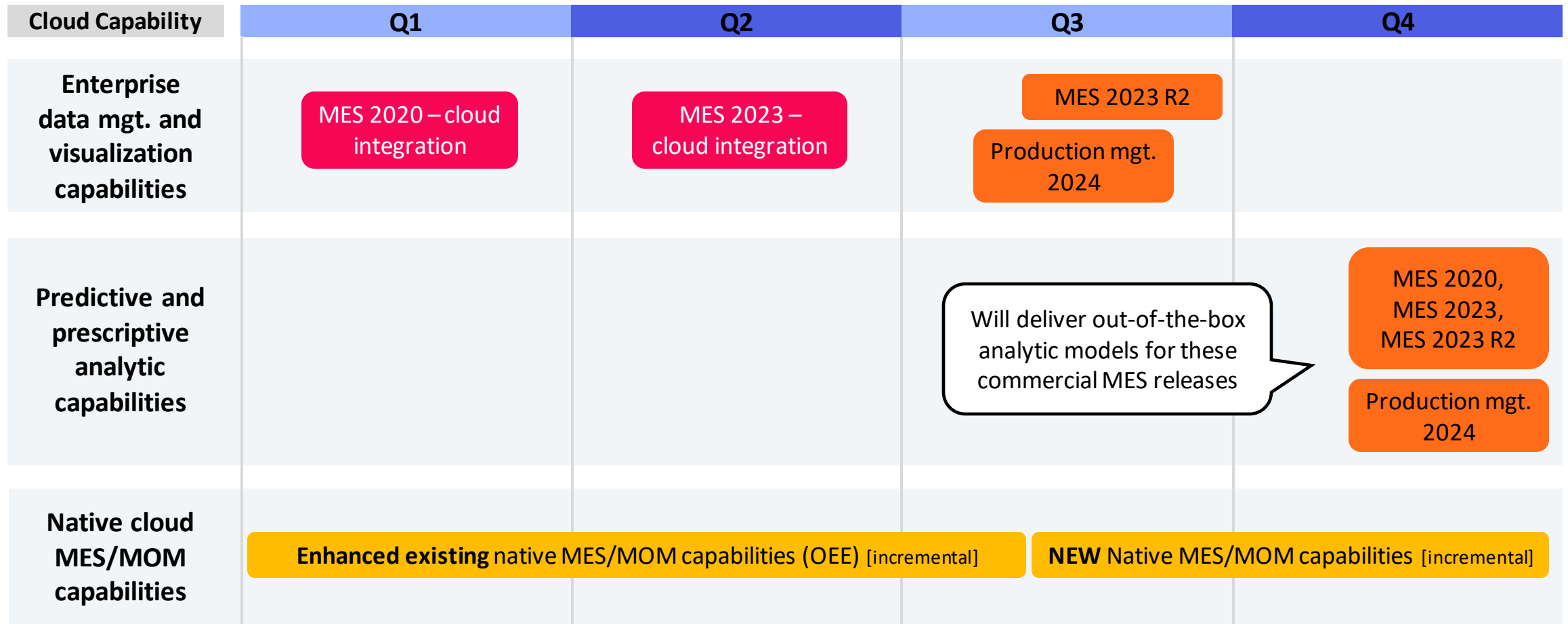
MES/MOM capabilities



Provide **multi-tenant native cloud capabilities** in support of **production operations, inventory operations and quality operations** for continuous and hybrid production environments.



CY24 - Native cloud & “connected” MES releases



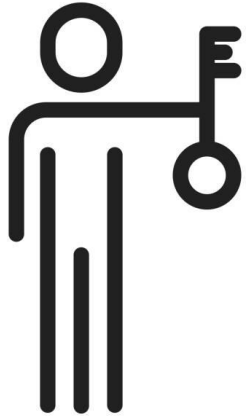
■ “Connected” MES add-ons
 ■ “Connected” MES releases
 ■ Native cloud releases

CY24 - On-premise MES app and content releases

Application	Q1	Q2	Q3	Q4
Model-driven MES			7.0	
Work tasks			2023 R2	
Batch mgt.			2023 R2	
Recipe mgt.	2023 R2			
Enterprise integration				2023 R2

 On-premise commercial releases

Key takeaways



- Delivering **new and improved MES/MOM capabilities** that help our customers **accelerate their digital transformation initiatives**
- Improving **time to value** and **lowering total cost of ownership (TCO)** through our **hybrid cloud approach**
- Enabling customers to **obtain more advanced insights** from their industrial data - **optimized with AI** to drive sustainable growth



Tom Troy

Leader, Operations and Execution Portfolio

- AVEVA
- tom.troy@aveva.com

Questions?

Please wait for the microphone.
State your name and company.



Please remember to...

Navigate to this session in the mobile app to complete the survey.



Thank you!

This presentation may include predictions, estimates, intentions, beliefs and other statements that are or may be construed as being forward-looking. While these forward-looking statements represent our current judgment on what the future holds, they are subject to risks and uncertainties that could result in actual outcomes differing materially from those projected in these statements. No statement contained herein constitutes a commitment by AVEVA to perform any particular action or to deliver any particular product or product features. Readers are cautioned not to place undue reliance on these forward-looking statements, which reflect our opinions only as of the date of this presentation.

The Company shall not be obliged to disclose any revision to these forward-looking statements to reflect events or circumstances occurring after the date on which they are made or to reflect the occurrence of future events.

 [linkedin.com/company/aveva](https://www.linkedin.com/company/aveva)

 [@avevagroup](https://twitter.com/avevagroup)

ABOUT AVEVA

AVEVA is a world leader in industrial software, providing engineering and operational solutions across multiple industries, including oil and gas, chemical, pharmaceutical, power and utilities, marine, renewables, and food and beverage. Our agnostic and open architecture helps organizations design, build, operate, maintain and optimize the complete lifecycle of complex industrial assets, from production plants and offshore platforms to manufactured consumer goods.

Over 20,000 enterprises in over 100 countries rely on AVEVA to help them deliver life's essentials: safe and reliable energy, food, medicines, infrastructure and more. By connecting people with trusted information and AI-enriched insights, AVEVA enables teams to engineer efficiently and optimize operations, driving growth and sustainability.

Named as one of the world's most innovative companies, AVEVA supports customers with open solutions and the expertise of more than 6,400 employees, 5,000 partners and 5,700 certified developers. The company is headquartered in Cambridge, UK.

Learn more at www.aveva.com