

OCTOBER 24, 2023

The journey to connected economies

Industry challenges and how AVEVA helps infrastructure

Gary Wong, Matt Miller – AVEVA

AVEVA

CREATE A MORE SUSTAINABLE FUTURE

Infrastructure

Modernize your critical operations and achieve net-zero emissions



Infrastructure's drive to resiliency, agility and sustainability

A widening labor shortfall means there are only
89 workers
for every 100 open jobs in the US

US water-related energy use is
>521 million MWh a year
or 13% of the nation's electricity consumption

The transportation industry uses
~1/3 of global energy and contributes 23% of all energy-related CO2 emissions

Emissions from electricity
were the largest contributor to water-related energy emissions in 98% of water and wastewater utilities

US buildings account for
40% of primary energy use,
72% electricity consumption and 39% of CO2 emissions

In 2022, **only 51.6%** of the global urban population has convenient access to public transport

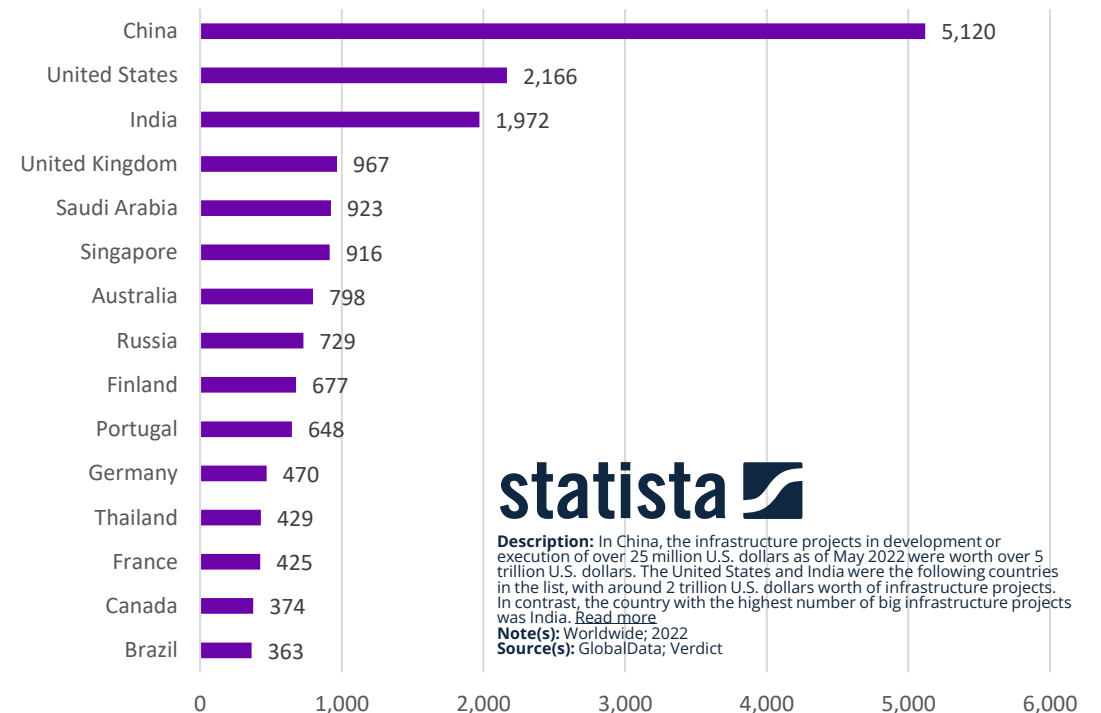
Sources: [US Chamber of Congress](#), [The Carbon Footprint of Water](#); [Transportation IISD Report](#), [The Journal of Cleaner Production](#); [Green Buildings](#); [UN Sustainable Development Goals Report 2023](#)

The opportunity is now... governments are funding!

Globally, governments are investing much-needed funds into modernizing infrastructure:

- **America – US\$1.2 trillion** – the Infrastructure Investment and Jobs Act (IIJA) is the largest infrastructure package in US history
 - \$180 billion funding via competitive grants; i.e. great applications win!
- **Canada – US\$131+ billion** – invested by the Canadian government to improve public transit, ports, energy systems and more
- **Brazil – US\$96 billion** – in committed funds across railways, ports, highways, airports, water and wastewater, sanitation and waste
- **France – US\$73+ billion** – for thermal renovation of buildings, infrastructure, sustainable transportation and mobility
- **Saudi Arabia – US\$1 trillion** – as it diversifies from oil and gas, the government is investing in major infrastructure projects such as Neom, Riyadh Metro, Makka Public Transport Program, Al Widyan

Value of infrastructure construction projects worldwide:
Top 15 countries by spend in 2022 (in billion US dollars)



Five key issues facing infrastructure, utilities and transportation



Increasing complexity of service networks



Budget constraints and funding restrictions



Aging workforce and high industry turnover



Aging infrastructure and pressure for "always-on" operations



Preparing for climate threats and natural disasters

IMPACT ↑ ↓



Five business imperatives for positive outcomes

Operational agility and resiliency



A connected workforce



Sustainability and circular economy



Greater operational efficiency



Improved asset reliability and safety



Helping to drive success by enabling digital initiatives

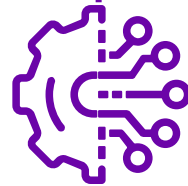
Streamline engineering and capital project execution

Improve simulation capabilities

Increase asset performance

Enable full visibility and awareness

Develop comprehensive industrial information infrastructure



OCTOBER, 23-26

Agenda – Day 1 to Day 3

Track: Infrastructure (Water, Facilities, Transport, Marine)

Tuesday, October 24

2.10–2.40pm



The journey to digital transformation in water

Connecting numerous systems and people from virtual meters to remote commissioning which resulted in energy savings and increased water production.

2.50–3.20pm



Using real-time data to create situational awareness

Managing stormwater systems across dispersed locations required multiple systems – SCADA, GIS, IoT – to come together in dynamic dashboards to make smarter, informed decisions.

3.50–4.20pm



Creating a single version of truth for handling emergencies

It never rains but it pours. In Qatar, managing water is critical business. Digitizing systems across the water value chain provides a single pane of view of the organization's entire operations.

4.30–5.00pm



Connecting operations: empowering infrastructure teams

Learn how AVEVA monitoring and control solutions can help you drive increased operational efficiency, reliability, and agility with a cohesive and sustainable software framework, from edge to enterprise.

Wednesday, October 25 - morning

8.00–9.10am



EPC of SCADA systems

A smart city with over 40 buildings, Qatar Foundation are optimizing HVAC efficiency, reducing water and energy usage across all these facilities in real-time.

9.20–9.50am



Sunsetting traditional ITS SCADA in favor of AVEVA

To better manage its growing road network, Ashghal needed to integrate its Intelligent Traffic System (ITS) with AVEVA™ System Platform. The first step, deciphering quaint system protocols.

10.20–10.50am



Truly remote and smart

How do you manage the complexity of hundreds of sites? And make good decisions quickly? SYSCOM goes beyond SCADA to create instant live reporting, redundancy in communication, and ideal response time.

11.00am–12.10pm

Panel

Connect to drive the circular economy

What does the future of connected communities mean to infrastructure? Find out in this interactive panel featuring speakers from AVEVA, Epcor, Inframark A&I, Maya HTT, Schneider Electric.

Wednesday, October 25 - **afternoon**

1.30–2.00pm



Natural catastrophe project – CSR and sustainability

Energy Development Corporation needed to understand how weather events such as typhoons and earthquakes affect its network. Enter a new data management system that allows EDC to drive sustainability and community safety.

2.10–2.40pm



Improving efficiency and averting problems

Over time, ReWa's wastewater treatment facilities have grown and gotten more complex, learn how it's using SCADA and alarm management to reduce callouts and become more efficient.

2.50–3.20pm



Unlocking real-time construction accuracy

Delta River showcases the game-changing advancements realized through harnessing the power of AVEVA™ E3D Design with 3D scans from the project. The result is unparalleled construction efficiency.

3.50–4.20pm



Connecting information: enterprise visualization for smart cities

Leverage your existing infrastructure and extract more value from your operations all through one single pane of glass. See how smart cities across the world are transforming to be more scalable, resilient, and agile.

4.30–5.00pm



Connecting ecosystems: data-sharing at scale

Unlock the power of aggregated, secure, and sharable data in the cloud. Learn how critical infrastructure companies can apply machine learning and artificial intelligence through AVEVA™ Data Hub.

Thursday, October 25 - morning

10.45–11.15am

AVEVA

Connecting intelligence: taking data to the next level with AI

Whether you are using AI and ML to identify quality, compliance, or asset maintenance issues; these new advanced analytics tools are an essential part of the modern digital toolbox for critical infrastructure.

11.25–11.55am

MITSUBISHI
HEAVY INDUSTRIES

Expanded use of AVEVA™ PI System™ for the energy transition and infrastructure

Mitsubishi Heavy Industries implemented an energy management system to optimize the Takasago Hydrogen Plant including a large CCGT power plant, multiple hydrogen generators, and hydrogen storage, plus grid interaction.



Thursday, October 25 - afternoon

1.30–2.00pm

AVEVA

Connecting the marine lifecycle

Discover AVEVA's mission and strategy for the marine industry. Learn how our software can address challenges across the lifecycle, from faster design and digital shipyards right through to retrofitting and recycling.

2.10–2.40pm

株式会社 名村造船所
NAMURA SHIPBUILDING CO., LTD.

The challenge of changing outfitting detail design methods

Namura designs outfitting detail based on 2D drawings. Discover how the company is minimizing wasted work by changing its design method based on a 3D modeling approach.

2.50–3.20pm

RAUMA MARINE
CONSTRUCTIONS

Early structural modeling with AVEVA™ E3D Design

Discover how Rauma Marine Constructions executed early structural modeling with AVEVA E3D Design, driving a single-source-of-truth model within AVEVA E3D Design and a structural model for FE-model creation.

3.50–4.20pm

CSL

CSL's fleet management: A journey through advanced analytics

Learn about CSL's journey toward connected vessels for operational excellence and advanced analytics, leading to fuel savings, a reduction in CO2 emissions, and better operations.

What else to see and do?

Partner & Product Expo

- Product demos
- Partner solution talks
- Innovation talks
- Networking

WHEN:

- Breaks incl. lunch
- Dinner tomorrow

Offsite dinner event

- Sponsored by Radix
- Networking

WHEN:

- Tonight, Fort Mason – Festival Pavilion

Geek talks

- PI Geek
- Operations Control

WHEN:

- Today, tomorrow, Thursday

User talks

- Engineering
- HMI/SCADA
- AVEVA PI System
- Advanced applications and artificial intelligence (AI)
- Ecosystem and cloud

WHEN:

- Today, tomorrow, Thursday

12+ industries
40+ learning labs
50+ customer presentations
160+ global speakers

Infrastructure customer talks in other tracks

- **Inframark A&I** | 2.10pm, today – Ecosystem user
- **Dallas Water** | 3.50pm, today – HMI/SCADA user
- **UC Davis** | 3.50pm, today – Power and Utilities
- **Snolab** | 4.30pm, today – AVEVA PI System user
- **Qatar Foundation** | 1.30pm, tomorrow – HMI/SCADA
- **Hanford Vit plant** 1.30pm, tomorrow – AVEVA PI System
- **JEA** | 10.45am Thursday – AVEVA PI System
- **Suez** | 2.50pm Thursday – Industrial AI



Gary Wong

Global Industry Principal, Infrastructure and Water

- Company
- Gary.Wong@AVEVA.com



Matt Miller

Global Industry Principal, Transportation and Marine

- AVEVA
- Matt.Miller@AVEVA.com

Questions?

Please wait for the microphone.
State your name and company.



Please remember to...

Navigate to this session in the mobile app to complete the survey.



Thank you!

This presentation may include predictions, estimates, intentions, beliefs and other statements that are or may be construed as being forward-looking. While these forward-looking statements represent our current judgment on what the future holds, they are subject to risks and uncertainties that could result in actual outcomes differing materially from those projected in these statements. No statement contained herein constitutes a commitment by AVEVA to perform any particular action or to deliver any particular product or product features. Readers are cautioned not to place undue reliance on these forward-looking statements, which reflect our opinions only as of the date of this presentation.

The Company shall not be obliged to disclose any revision to these forward-looking statements to reflect events or circumstances occurring after the date on which they are made or to reflect the occurrence of future events.

 [linkedin.com/company/aveva](https://www.linkedin.com/company/aveva)

 [@avevagroup](https://twitter.com/avevagroup)

ABOUT AVEVA

AVEVA is a world leader in industrial software, providing engineering and operational solutions across multiple industries, including oil and gas, chemical, pharmaceutical, power and utilities, marine, renewables, and food and beverage. Our agnostic and open architecture helps organizations design, build, operate, maintain and optimize the complete lifecycle of complex industrial assets, from production plants and offshore platforms to manufactured consumer goods.

Over 20,000 enterprises in over 100 countries rely on AVEVA to help them deliver life's essentials: safe and reliable energy, food, medicines, infrastructure and more. By connecting people with trusted information and AI-enriched insights, AVEVA enables teams to engineer efficiently and optimize operations, driving growth and sustainability.

Named as one of the world's most innovative companies, AVEVA supports customers with open solutions and the expertise of more than 6,400 employees, 5,000 partners and 5,700 certified developers. The company is headquartered in Cambridge, UK.

Learn more at www.aveva.com