

OCTOBER 25, 2023

An introduction to the next generation P&ID environment

ERIC CARNET – AVEVA Engineering & Schematics Senior Portfolio Manager

AVEVA

An introduction to the next generation P&ID tool

Challenge



Solution

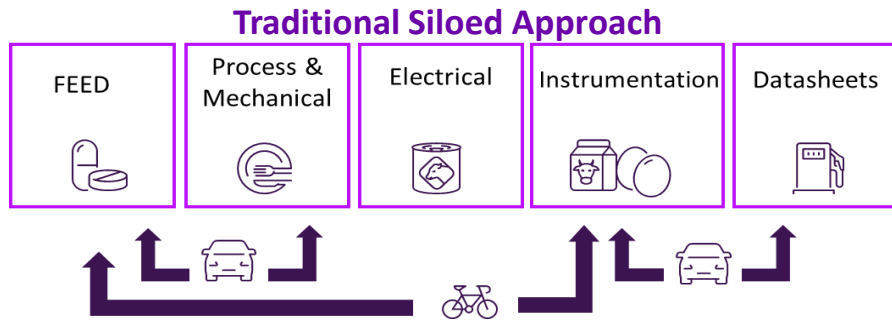
- Next Generation P&ID powered by AVEVA™ Engineering on Unified Engineering will deliver a completely new user experience for P&ID drafting

Results

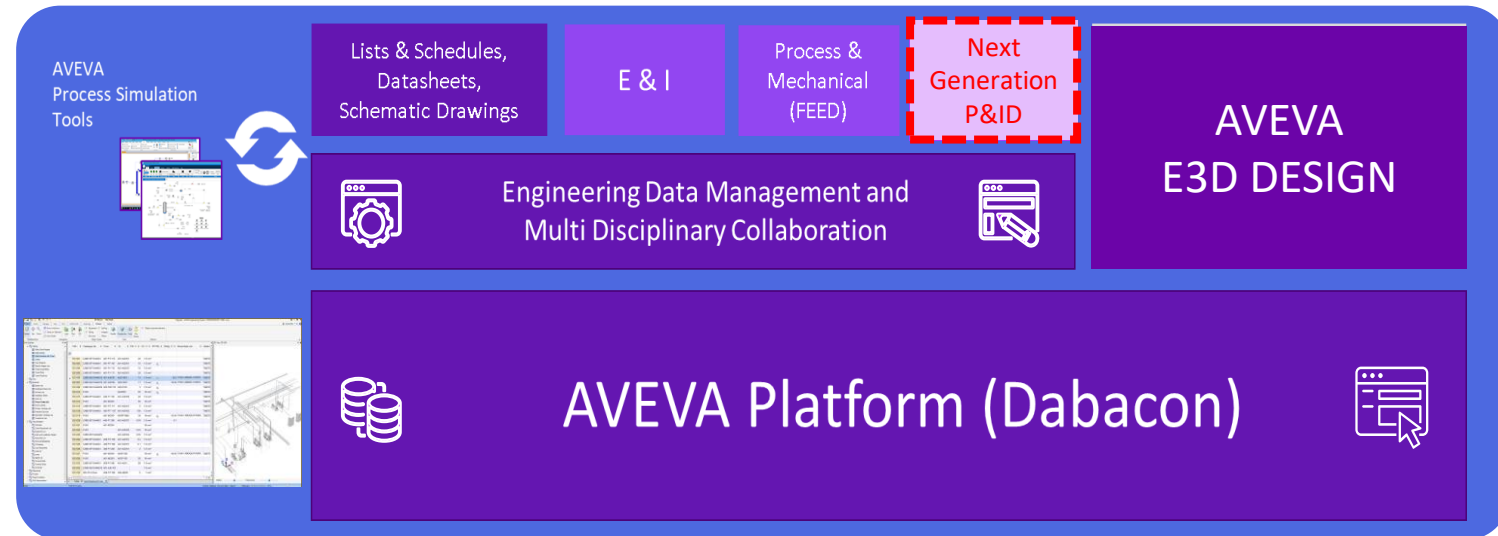
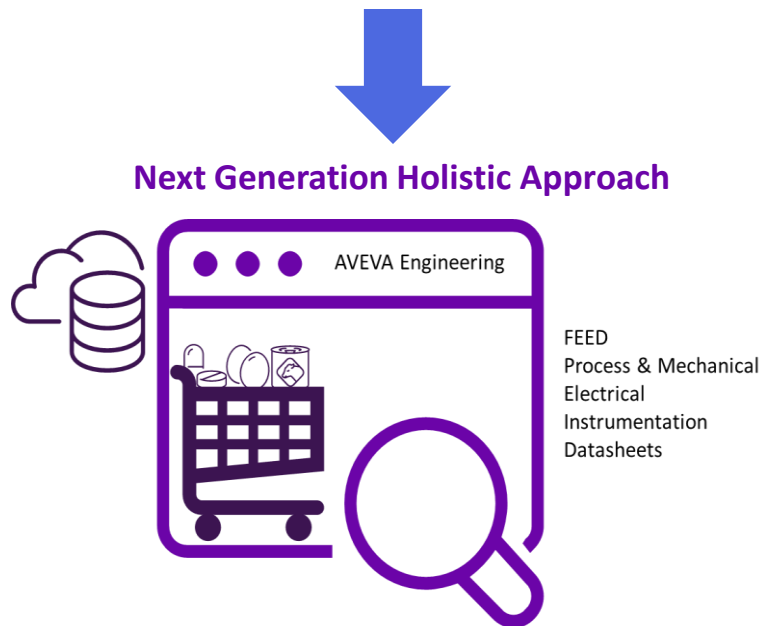
- **Holistic Configurable Class hierarchy Conceptual model**
- **Multidisciplinary Engineering environment**
- **Embedded AVEVA DRAW graphic engine using underlying live data**
- **Data sustainability from Simulation to Functional and Detail design project lifecycle**



AVEVA Engineering (R)evolution



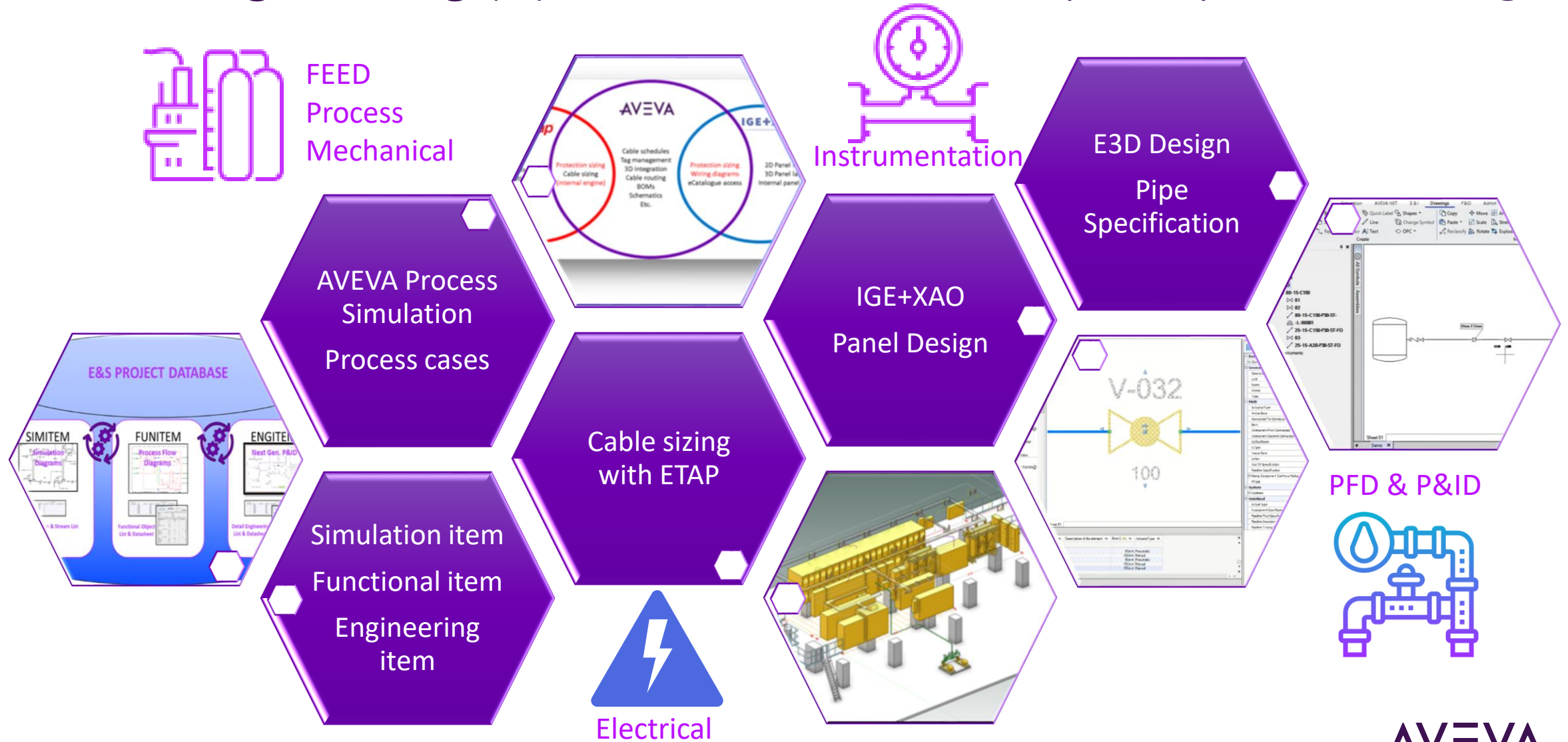
Next generation P&ID discipline, finalizing AVEVA Engineering (R)evolution from siloed integrated discipline applications to a multi-disciplinary data centric holistic environment.



AVEVA Engineering (R)evolution - Multi Disciplinary Platform



AVEVA Engineering (R)evolution - Multi Disciplinary Business Logic



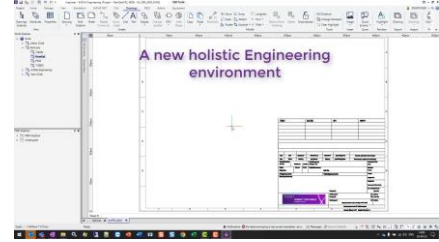
What is AVEVA Engineering Next Generation P&ID?

An efficient
Multi-
disciplinary
Engineering
Environment

A User-friendly
Draw embedded
graphic canvas

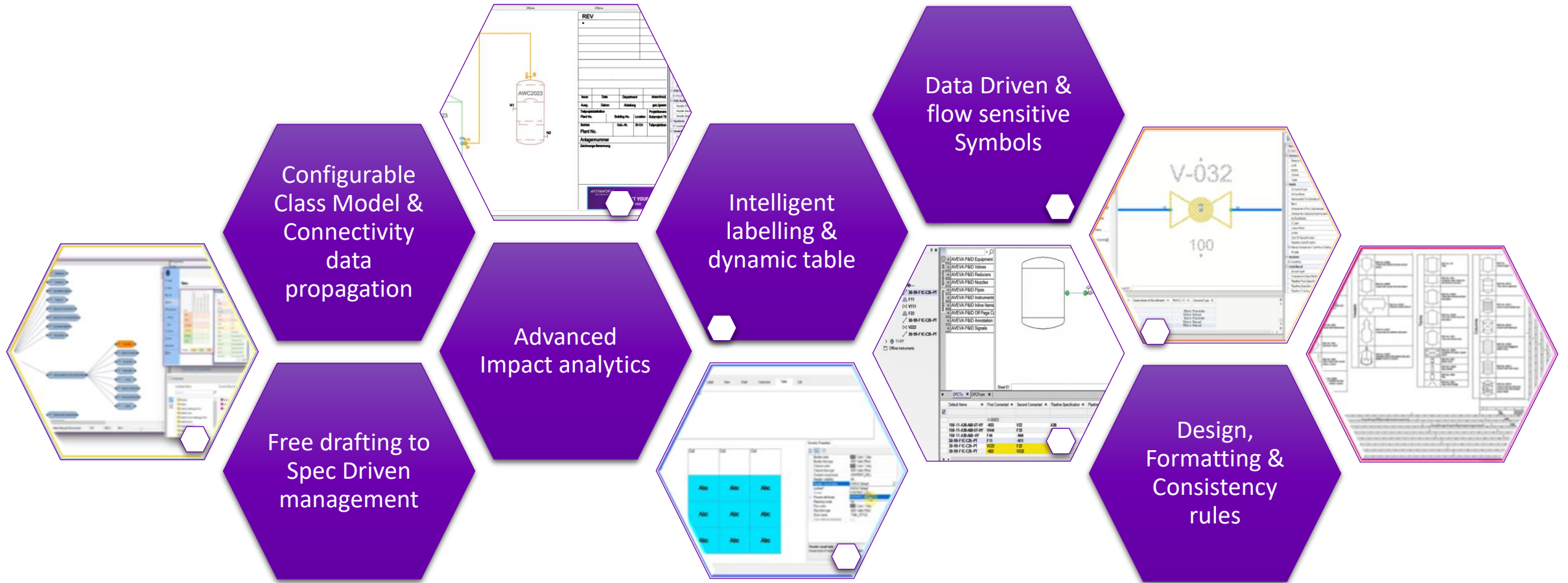
A new Data
driven
Engineering
holistic
environment

A best-in-Class
Project lifecycle
workflow



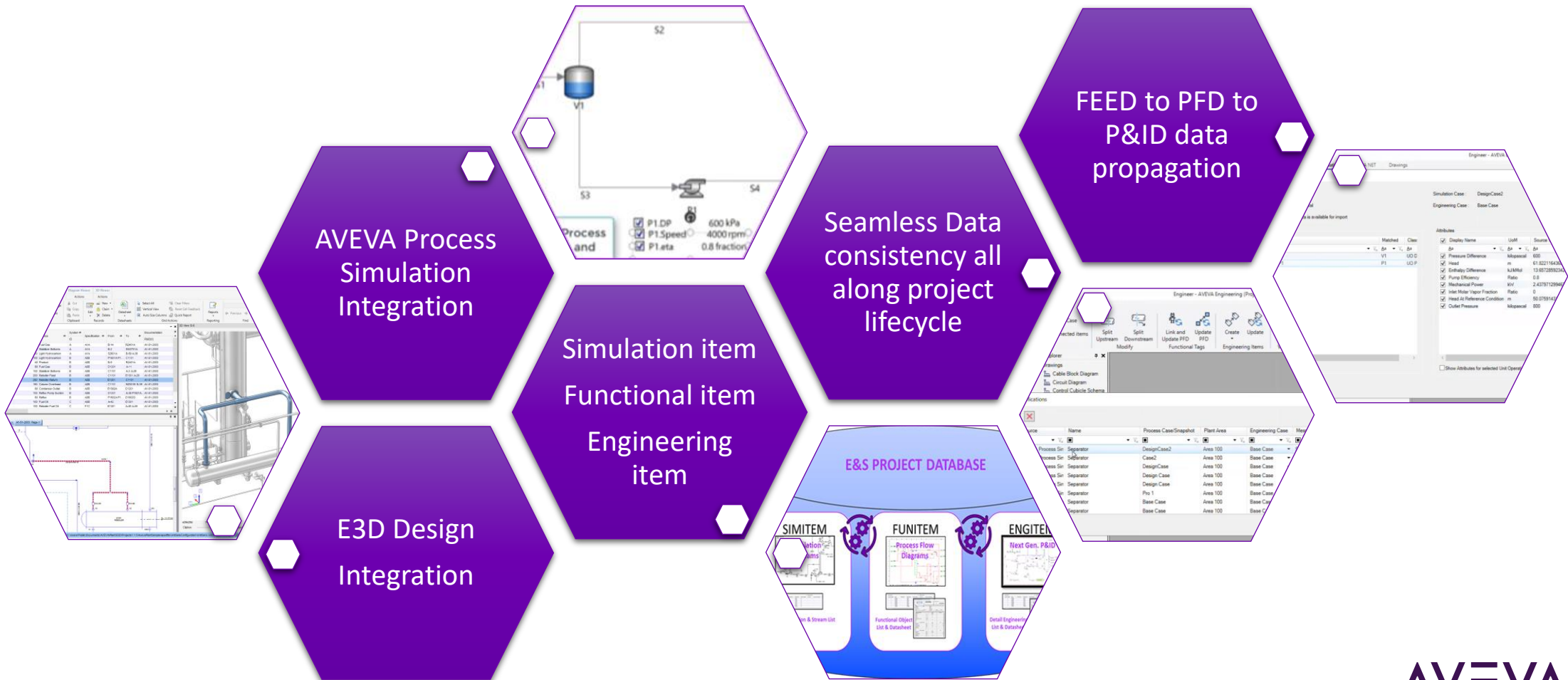
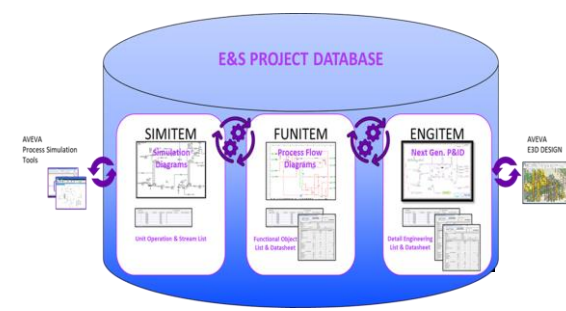
What is AVEVA Engineering Next Generation P&ID?

An efficient Multi disciplinary with A User-friendly Draw embedded graphic canvas



What is AVEVA Engineering Next Generation P&ID?

A Best-in-class project lifecycle workflow for data sharing and integrity



What is AVEVA Engineering Next Generation P&ID?

An efficient Multi-disciplinary Engineering Environment

- Project creation with Library content reference and Engineering facilities
- Drawing, Typicals & Patterns configuration
- Pipe Specification configuration with E3D integration facilities
- Configurable Class Model & Connectivity data propagation

A User-friendly Draw embedded graphic canvas

- Easy and fast free drafting environment with Standard CAD commands.
- Advanced UI with PBS, Ribbon bar, Powerwheel, unassigned items & item list facilities
- Symbols and assemblies auto-orientation and flow sensitive

A new Data driven Engineering holistic environment

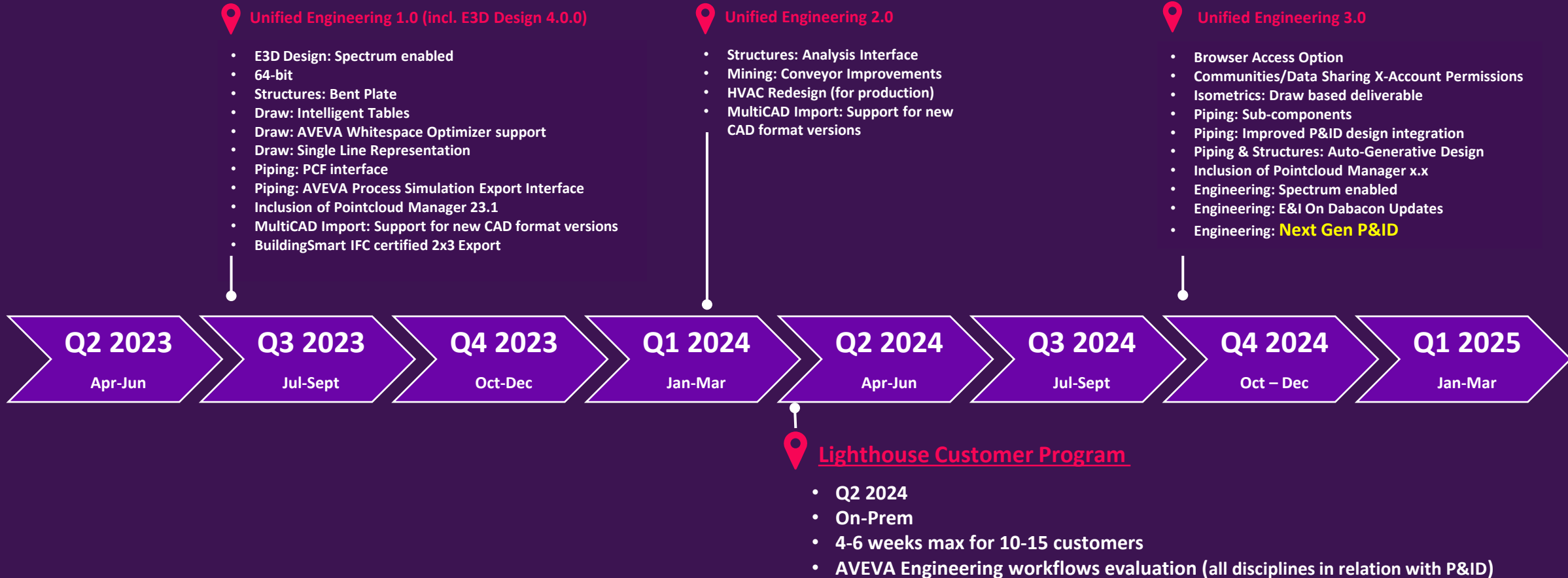
- Multidisciplinary underlying up to date information
- Data driven symbols & lines style
- Intelligent labelling & Dynamic Tables
- User Define rules
 - For Consistency and Formatting rules
 - For Data propagation

A best-in-Class Project lifecycle workflow

- Multi disciplinary holistic environment
- Process simulation, PFD to P&ID data & E3D Data propagation
- Instrumentation graphical definition & association
- DEXPI Legacy data migration

Unified Engineering

2023/24 Projected Feature Delivery



Roadmap based upon current requirement understanding and feature scope.

Please note delivery targets are subject to PO/Stakeholder verification of feature and passing of quality gateways.

Questions?

Please wait for the microphone.
State your name and company.



ERIC CARNET

AVEVA Engineering & Schematics
Senior Portfolio Manager



Please remember to...

Navigate to this session in the mobile app to complete the survey.



Thank you!

This presentation may include predictions, estimates, intentions, beliefs and other statements that are or may be construed as being forward-looking. While these forward-looking statements represent our current judgment on what the future holds, they are subject to risks and uncertainties that could result in actual outcomes differing materially from those projected in these statements. No statement contained herein constitutes a commitment by AVEVA to perform any particular action or to deliver any particular product or product features. Readers are cautioned not to place undue reliance on these forward-looking statements, which reflect our opinions only as of the date of this presentation.

The Company shall not be obliged to disclose any revision to these forward-looking statements to reflect events or circumstances occurring after the date on which they are made or to reflect the occurrence of future events.

 [linkedin.com/company/aveva](https://www.linkedin.com/company/aveva)

 [@avevagroup](https://twitter.com/avevagroup)

ABOUT AVEVA

AVEVA is a world leader in industrial software, providing engineering and operational solutions across multiple industries, including oil and gas, chemical, pharmaceutical, power and utilities, marine, renewables, and food and beverage. Our agnostic and open architecture helps organizations design, build, operate, maintain and optimize the complete lifecycle of complex industrial assets, from production plants and offshore platforms to manufactured consumer goods.

Over 20,000 enterprises in over 100 countries rely on AVEVA to help them deliver life's essentials: safe and reliable energy, food, medicines, infrastructure and more. By connecting people with trusted information and AI-enriched insights, AVEVA enables teams to engineer efficiently and optimize operations, driving growth and sustainability.

Named as one of the world's most innovative companies, AVEVA supports customers with open solutions and the expertise of more than 6,400 employees, 5,000 partners and 5,700 certified developers. The company is headquartered in Cambridge, UK.

Learn more at www.aveva.com