

OCTOBER 2023

---

# Designing AVEVA InTouch HMI application for web clients

Brian Martin - Technical Sales Consultant



AVEVA



# Brian Martin

Technical Sales Consultant

AVEVA

[brian.martin@aveva.com](mailto:brian.martin@aveva.com)



Topic for this session

Introduction (What is InTouch Web)

Architecture

The Introductory Demo

What works

What doesn't work

Example(s) Demo

Workspaces

Call to Action (Try your apps)

---

# What is it?

InTouch Web Defined

AVEVA

# Web HMI has come to InTouch

## Empowering All InTouch Customers with native Web Capability

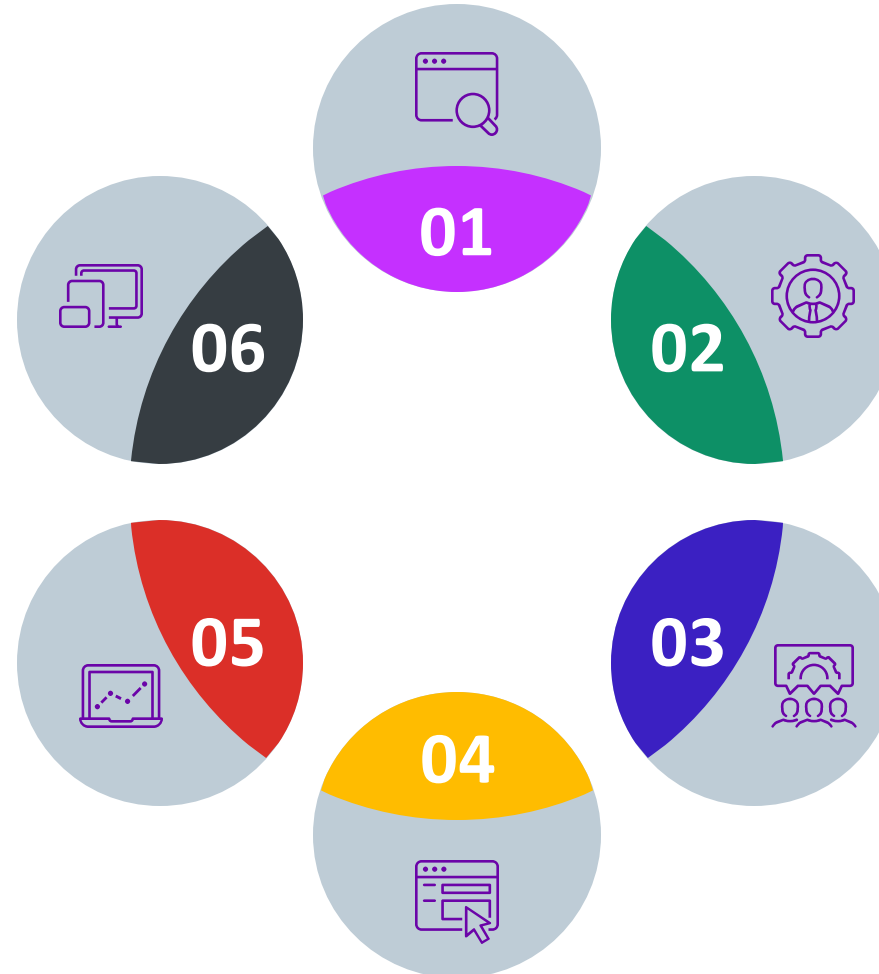
- Window Viewer user experience in Web Client with minimal footprint.
- Backwards compatibility with InTouch application (stand-alone, modern, managed)
- Extending the Window Viewer navigation & experience to the native web browser
- Localization Support (German, Japanese, French, Simplified Chinese)
- Higher Scalability for large scale deployment



# InTouch Web Client Key Benefits

Simply works out-of-box without any re-engineering!

- Access plant floor data using any HTML5 browser from any device
- Display real-time and historical data from InTouch HMI or System Platform
- Simple configuration. No Programming. Use existing Navigation or Simply point to folder with the selected graphics



- The InTouch Web Server can run on both Microsoft Windows Server or Workstation OS
- No IIS web server or Remote Desktop Services (RDS) required
- Zero client installation. No IT administration required!

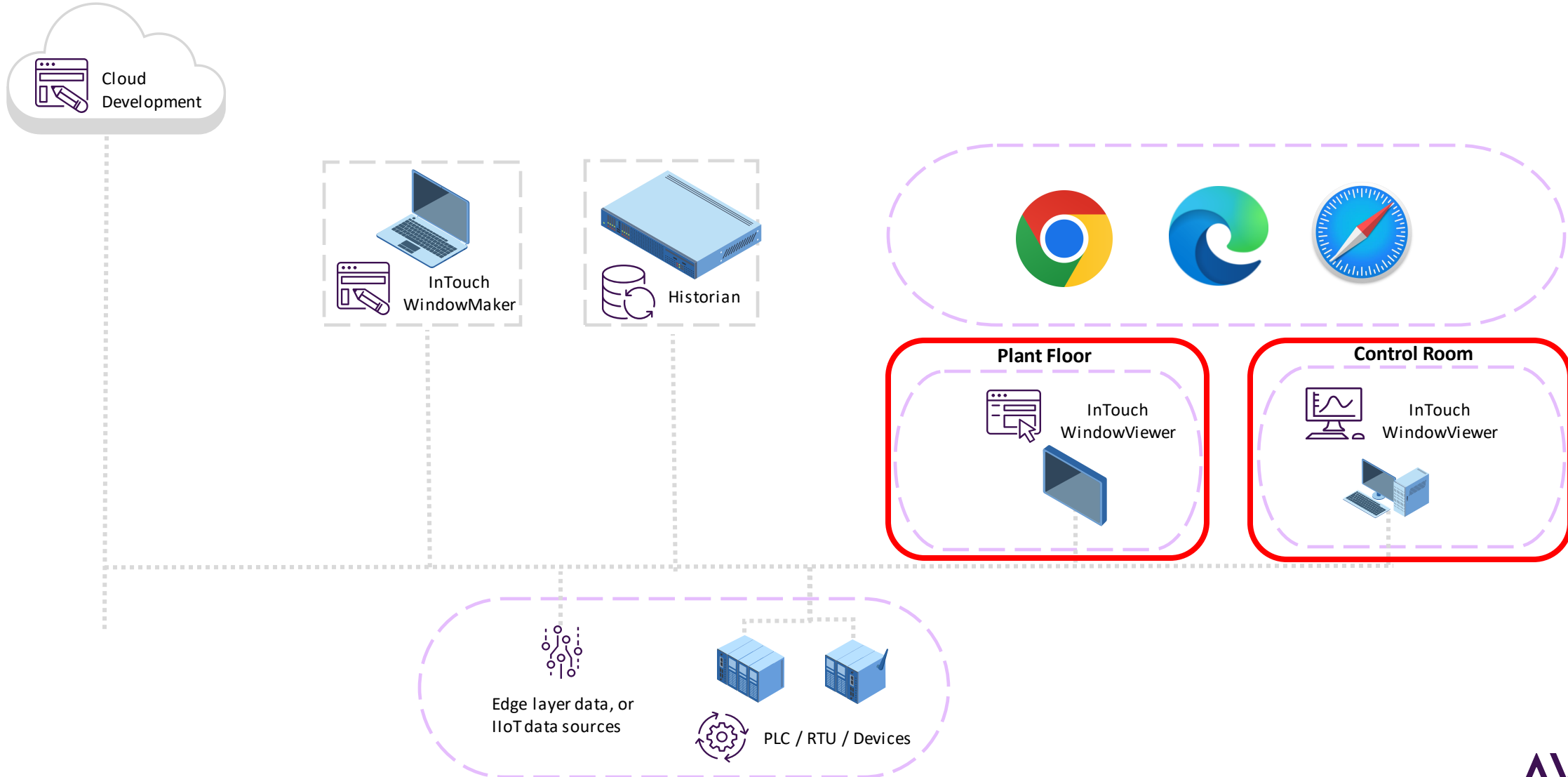
---

# Architecture Review

What are the pieces and where do they fit

**AVEVA**

# Reference Architecture





---

# Using The Introductory Demo

The Existing Demo Application Designed for The Web Client

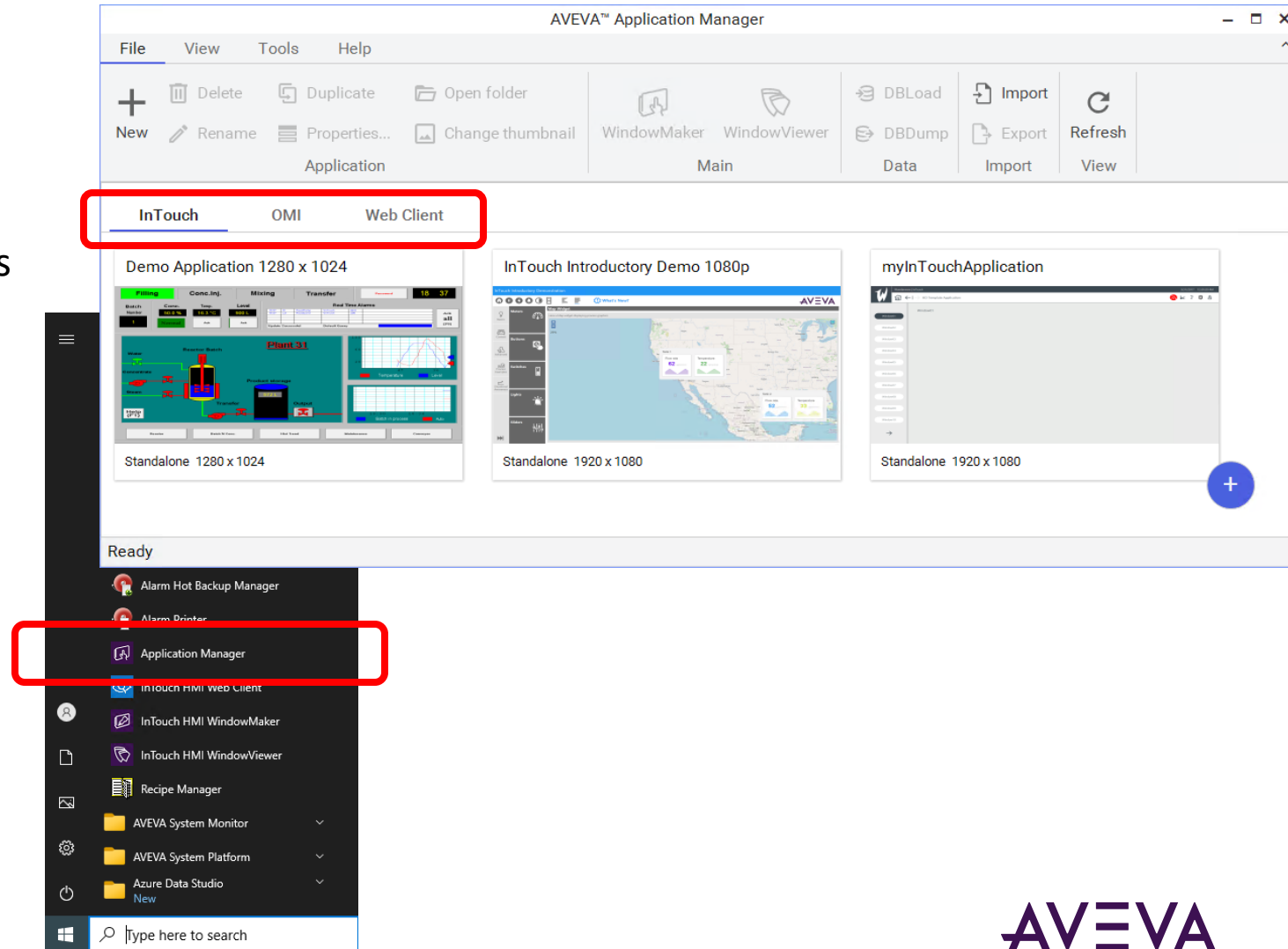
**AVEVA**



# Starting InTouch Web Server

## Using InTouch Application Manager

- From the Start Menu Select
- Application Manager will Start
- First time you will see the default applications
  - Demo Application 1280 x 1024
  - InTouch Introductory Demo 1080p
- There are 3 Tabs
  - InTouch (the default)
  - OMI
  - Web Client
    - Switch to Web Client



# Checking the Web Client

## Start and Stop Client



<-Running



<-Not Running

- Select Current Application
  - List shows all applications that are available
    - Intro demo designed specifically for InTouch Web
    - Select Intro Demo and Save
      - Leave all other defaults
- Settings can be customized
  - Click to customize button to change settings
  - Notice keywords
  - Notice ability to reset to defaults

File View Tools Help

Web Client Browser Refresh

Main View

### Customize advanced settings

- 1 Website name  
InTouch
- 2 Application title  
{currentapplication}  
Application title preview  
myInTouchApplication
- 3 Website title  
{websitename} - {applicationtitle}  
Website title preview  
InTouch - myInTouchApplication
- 4 Website icon  
Choose a file...

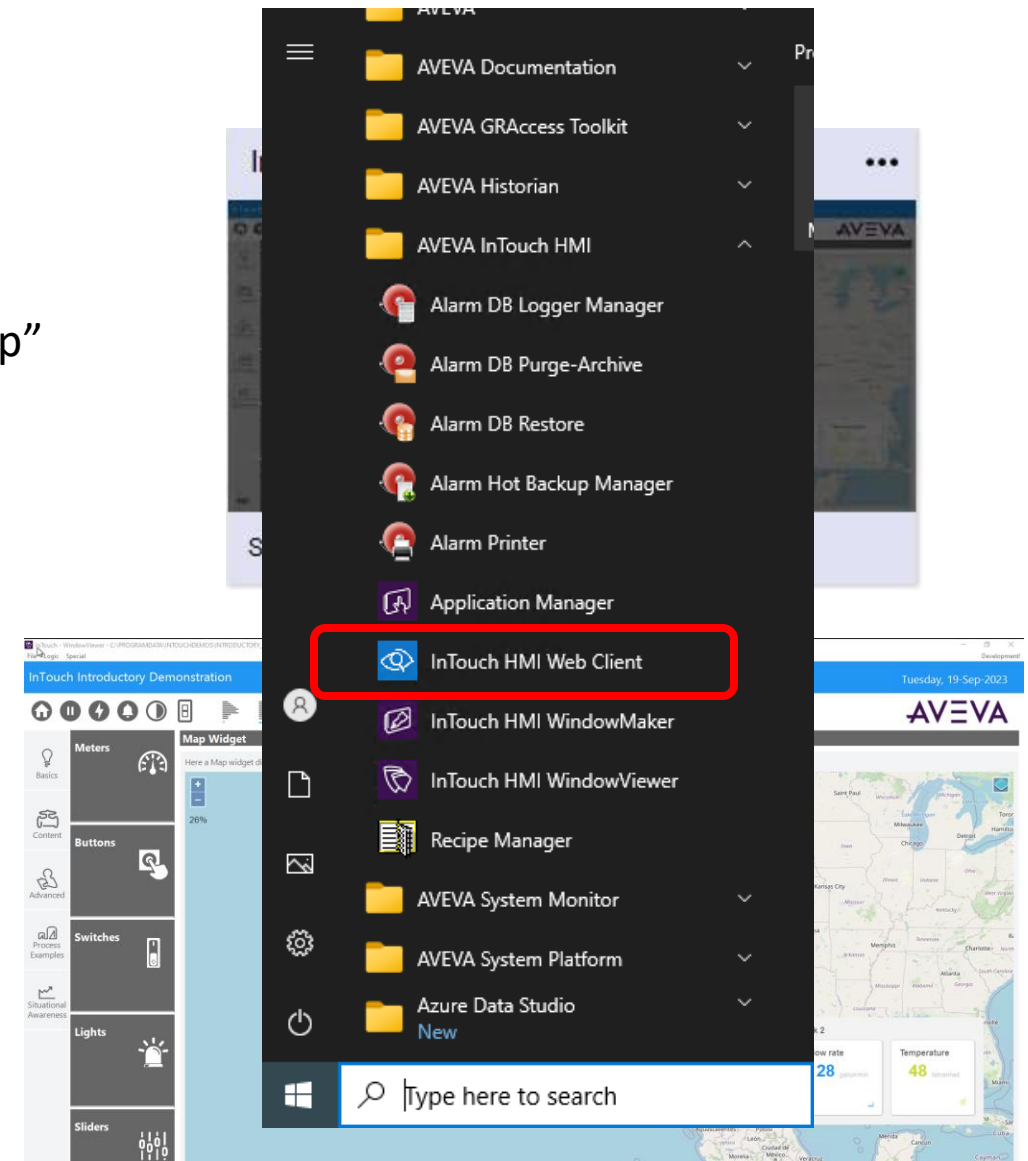
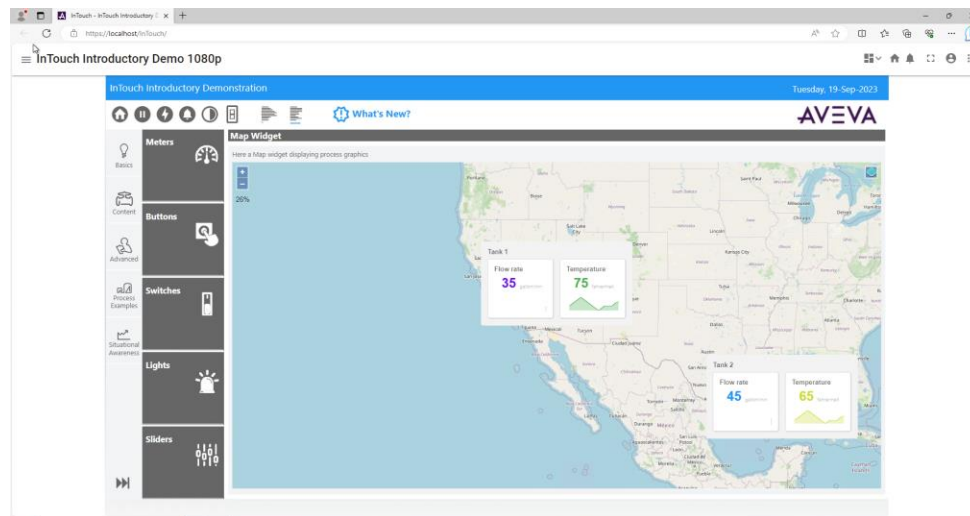
Reset defaults Cancel Save

Ready

# Run the Introductory Demo

## Designed for Web

- Launch WindowViewer into the “InTouch Introductory Demo 1080p”
- WindowViewer Starts
- Select “InTouch Web Client” from the Start Menu



---

# Questions to Ask Yourself or The Application Developer

- When was the application last updated?
- Are there controls used in the application?
- Are there custom script functions?
- Does each session need its own memory tags or are they shared?
- What type of security do you need?
- Structure for the User
  - Built in Navigation
  - Folder organization

---

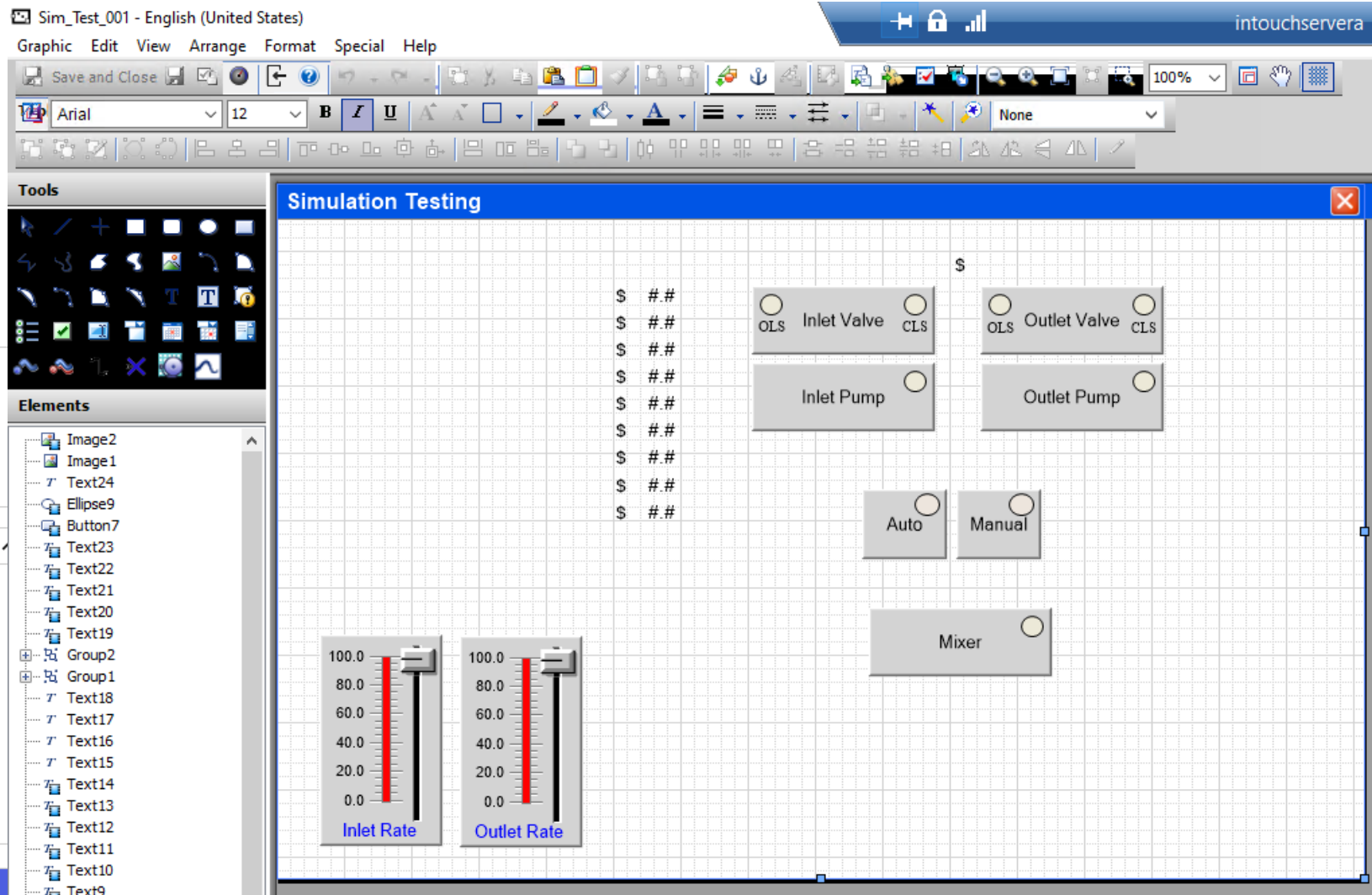
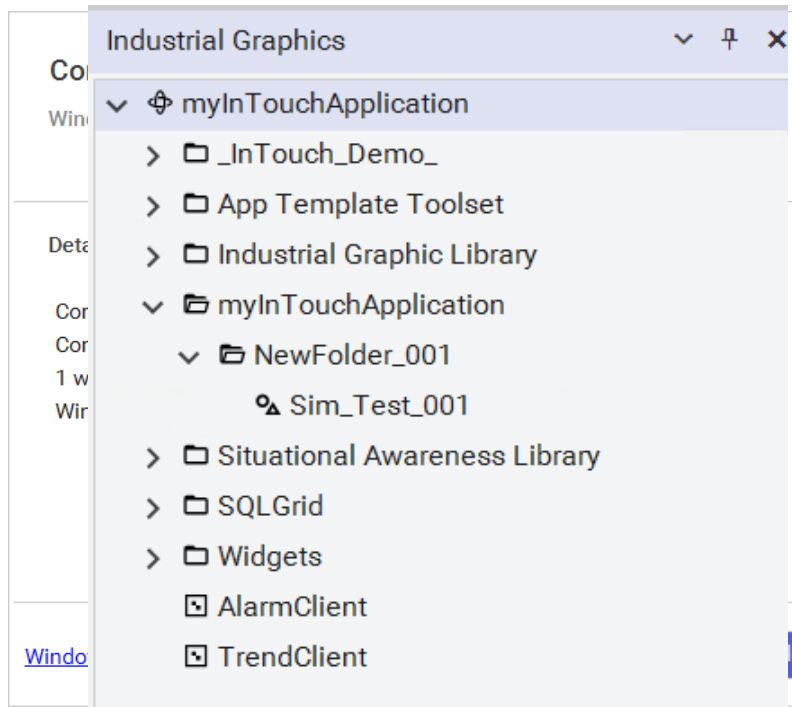
# What Works

Not all objects can render in the web client, so what works?



# Industrial Graphics

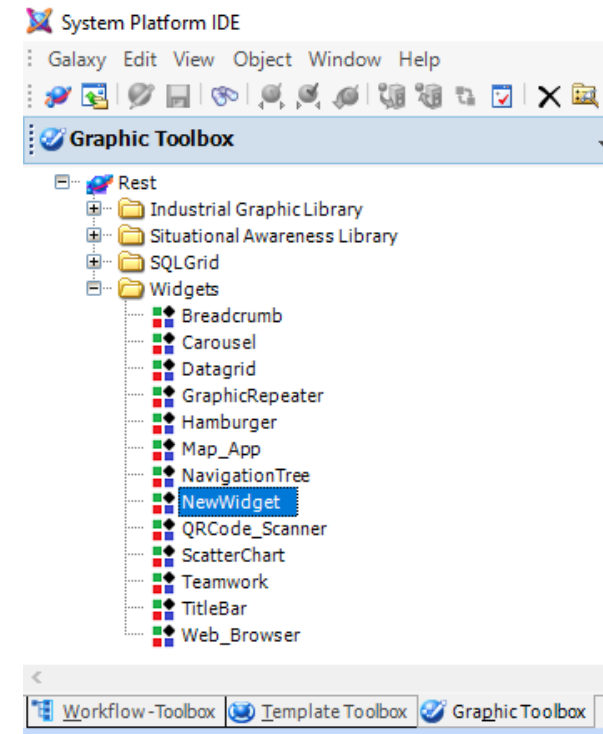
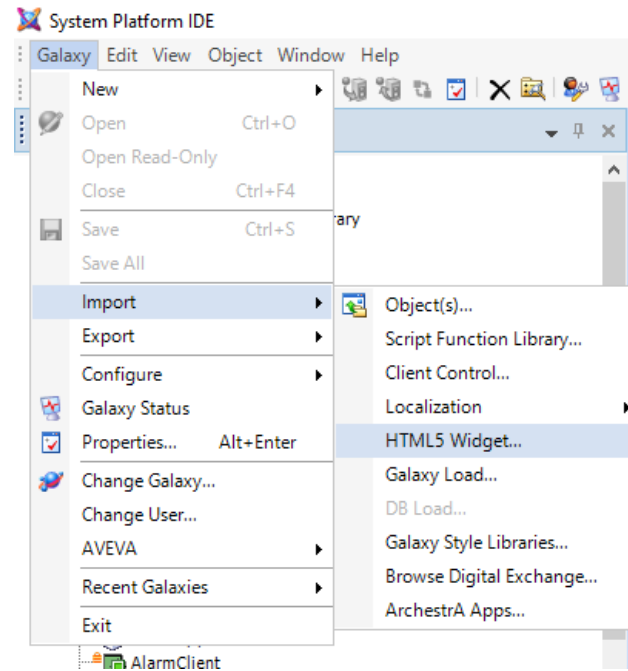
- InTouch Windows can Be Converted to Industrial Graphics
- Prebuilt Library's



# Web Widgets

## What they are and how to use them

- HTML5 Applications That Execute and Render in a Browser
  - Out of the Box
  - Custom
- Can be Imported
- Can Be Used to Replace **Some** Legacy Control Functionality
- Can Be Created Using Toolkit





---

# What Doesn't Work

Not all objects can render in the web client, so what doesn't work?



# Legacy Controls

## Not Web Friendly

- GOT Objects
- ActiveX Controls
- .Net Control
- WPF Controls

The screenshot displays a complex software interface with multiple overlapping windows. At the top, a 'Wizard/ActiveX Installation' dialog is open, showing a list of 'Installed ActiveX controls' including 'Wonderware Alarm Database', 'Wonderware Alarm Pareto Chart', 'Wonderware Alarm TreeView', 'Wonderware Alarm Viewer', 'Wonderware BatchButton Control', and 'BatchGUIConfig'. Below this, a 'Wizard Selection' dialog is visible, listing various control types like 'Alarm Displays', 'Buttons', 'Clocks', 'Frames', 'Gadget Buttons', etc. In the background, a 'Trend' window shows a purple line graph of temperature over time, with two vertical lines indicating specific data points: (8/10/2018 11:48:47 AM) 195 degC and (8/10/2018 11:52:17 AM) 189 degC. At the bottom, an 'Alarms' table is displayed, listing various alarms with columns for User, State, Node, Tag Name, Description, Number, Server, Color, Units, Minimum, Maximum, IO Address, Time Offset, and Source Tag.

User	State	Node	Tag Name	Description	Number	Server	Color	Units	Minimum	Maximum	IO Address	Time Offset	Source Tag
0	UNACK	Window	ReactTemp...	Current reactor temperal...	1	VM-NEX...	Blue	degC	181	206	VM-NEXTGENU2Vn...	0:00:00.000	
0	UNACK_RT...	Window...	Mixers	Mixer400_Temperature_PV				LOLO	3/18/2022 3:43:37 PM	120	15		
0	UNACK_RT...	Window...	Mixers	Mixer200_Temperature_PV				HI	3/18/2022 3:43:39 PM	150	15		
0	UNACK_RT...	Window...	Mixers	Mixer300_Temperature_PV				HI	3/18/2022 3:43:40 PM	150	12		
0	UNACK	Window...	Mixers	Mixer300_Temperature_PV				LOLO	3/18/2022 3:43:52 PM	120	12		
0	UNACK	Window...	Mixers	Mixer100_Temperature_PV				HI	3/18/2022 3:43:57 PM	150	16		
0	UNACK_RT...	Window...	Mixers	Mixer100_Temperature_PV				HI	3/18/2022 3:43:58 PM	150	16		
0	UNACK	Window...	Mixers	Mixer100_Temperature_PV				HI	3/18/2022 3:43:59 PM	150	16		
0	UNACK_RT...	Window...	Mixers	Mixer300_Temperature_PV				LOLO	3/18/2022 3:44:00 PM	120	12		
0	UNACK	Window...	Mixers	Mixer400_Temperature_PV				HI	3/18/2022 3:44:00 PM	150	15		
0	UNACK	Window...	Mixers	Mixer300_Temperature_PV				LOLO	3/18/2022 3:44:01 PM	120	12		
0	UNACK_RT...	Window...	Mixers	Mixer300_Temperature_PV				LOLO	3/18/2022 3:44:02 PM	120	12		

---

# Demo Examples

Extending the reach and getting everyone InTouch

**AVEVA**

# Standard Workstation

Workstation Running Windows Operating System





What's New?



**Meters**

**Buttons**

**Switches**

**Lights**

**Sliders**

Basics

Content

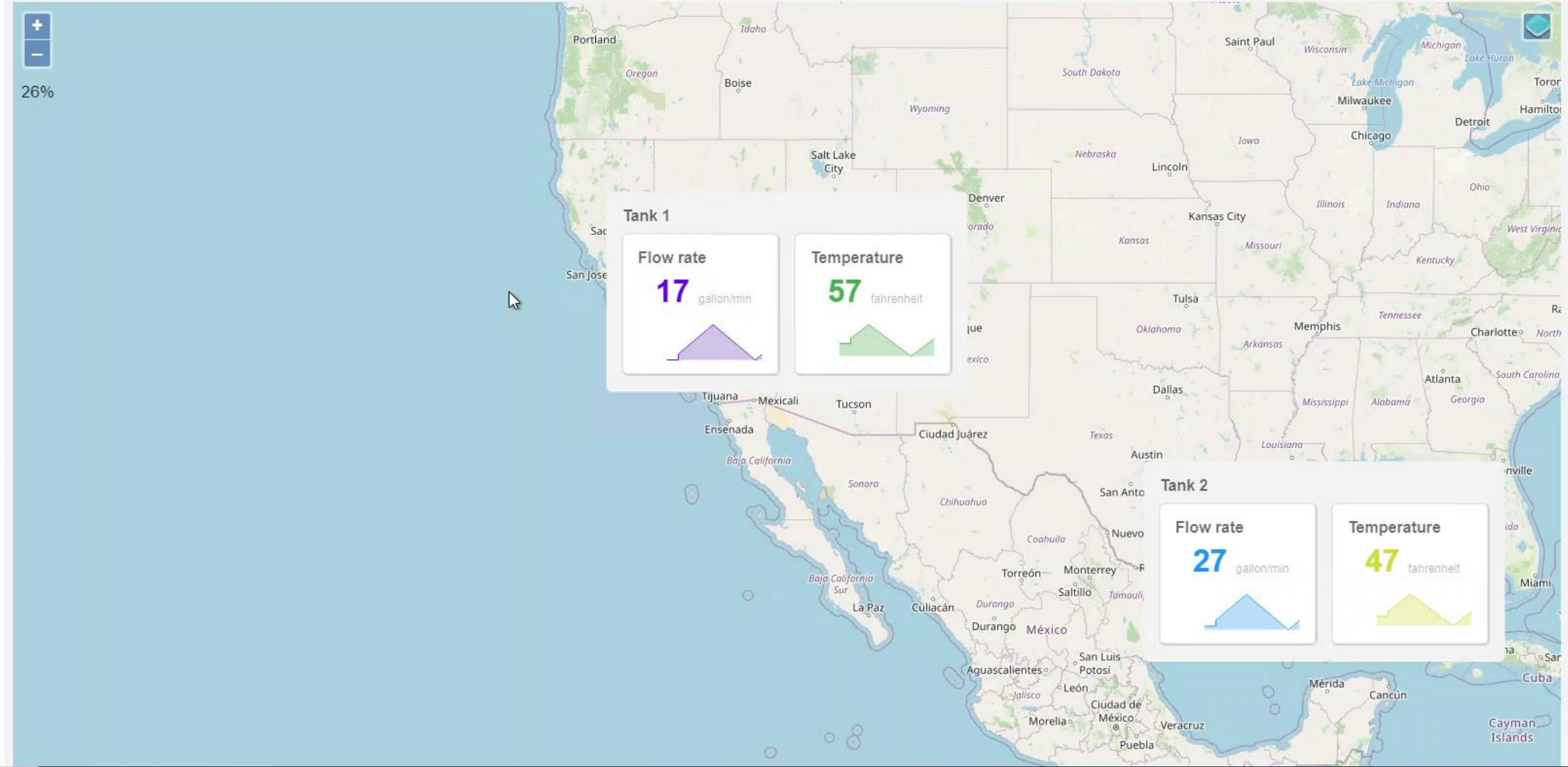
Advanced

Process Examples

Situational Awareness

## Map Widget

Here a Map widget displaying process graphics



---

# Now In A Browser

Any HTML5 Compatible Browser





intouchservera

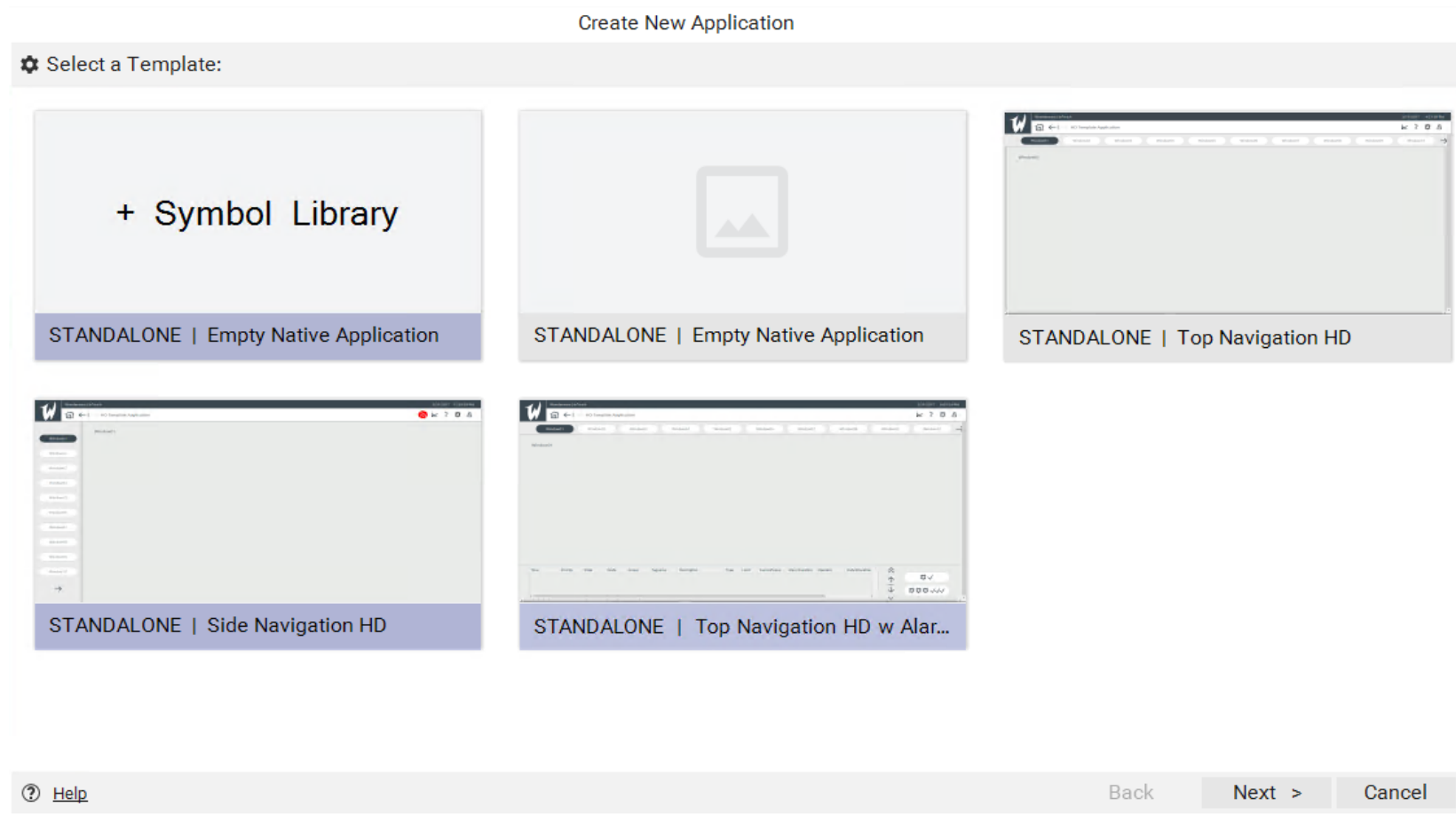


Type here to search



# InTouch Application Templates

## Leverage Out-of-the-Box Tools\Materials





### Overview

- Reactor\_System
- Sim\_Test
- Reactor31
- Window4
- WaterProcess
- TankFarm
- ProcessOverview**
- CarouselWidget
- Trends
- AlarmSummary

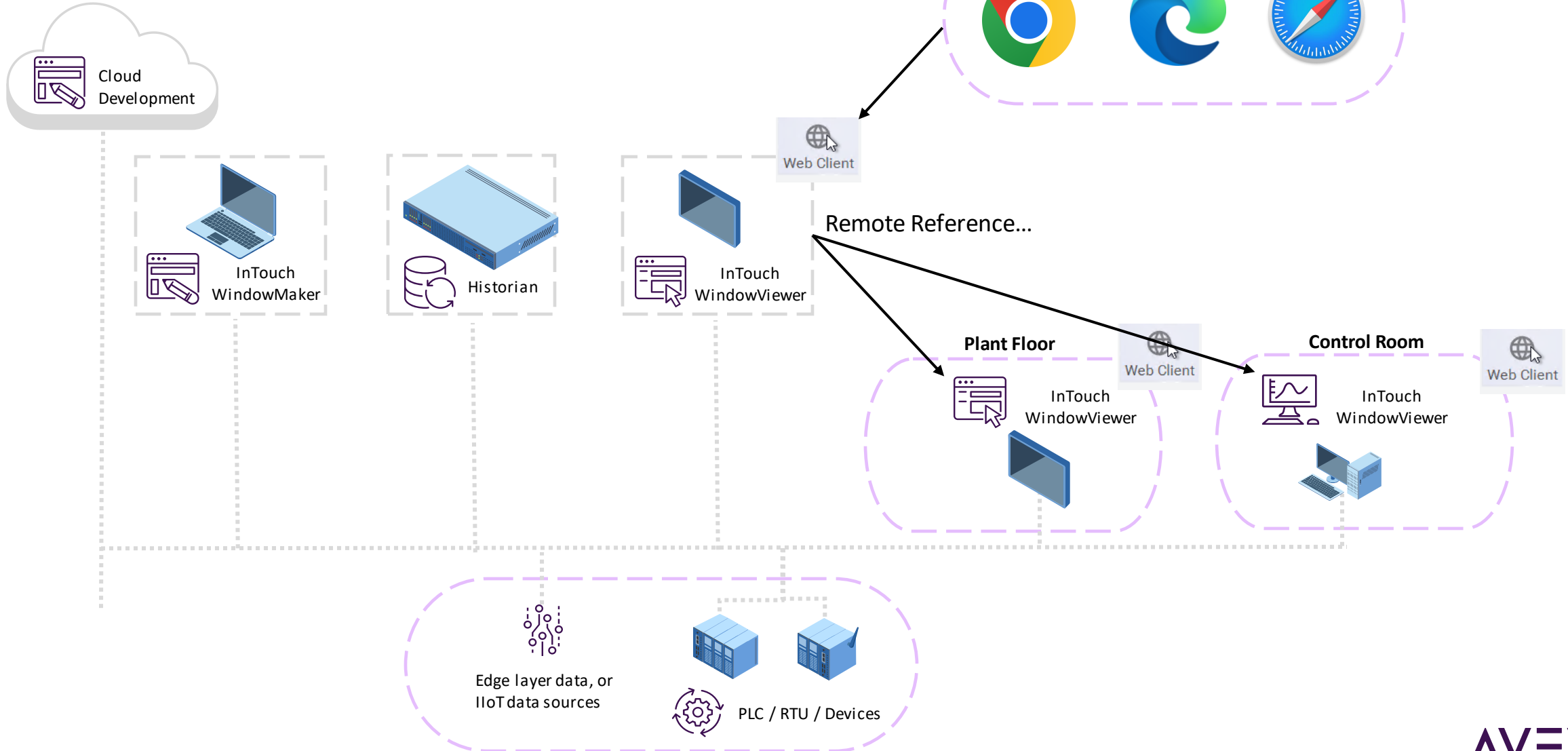
AVEVA™ InTouch® HMI WindowViewer  
Version 2023

aveva.com  
Copyright © 2002-2022 AVEVA Group plc and its subsidiaries. All rights reserved.

**AVEVA**



# Other Architecture Options



---

# Workspaces

Users can create their own dashboards





---

# Conclusion

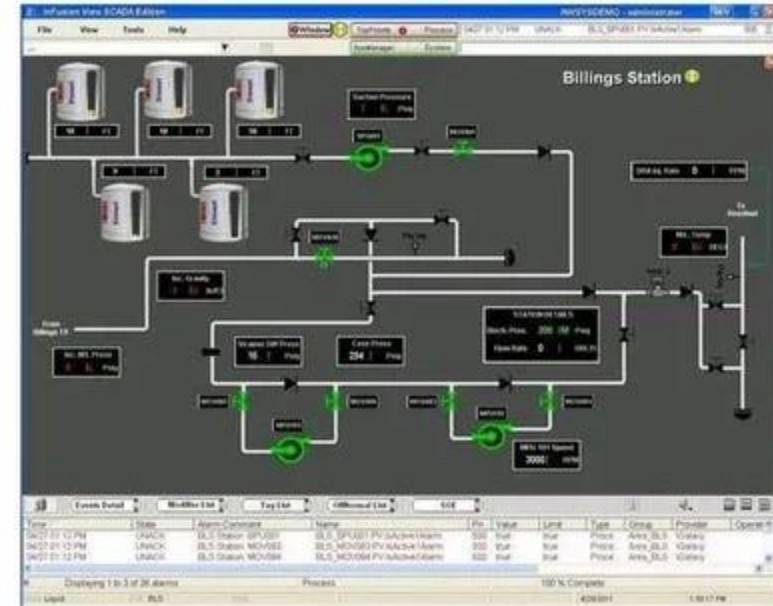
Your call to action

**AVEVA**

# InTouch Web Summary

## The Facts

- No Installation Needed
- Works with any HTML5 Browser
- Works with Legacy InTouch with Modifications
- Supports Read Only and Read\Write Functionality
- Works with Windows Domain Security
- Also works with System Platform
- Can be used for a multi-node consolidated server
- Includes Personal Workspaces



# Questions?

Please wait for the microphone.  
State your name and company.



# Please remember to...

Navigate to this session in the mobile app to complete the survey.



# Thank you!

This presentation may include predictions, estimates, intentions, beliefs and other statements that are or may be construed as being forward-looking. While these forward-looking statements represent our current judgment on what the future holds, they are subject to risks and uncertainties that could result in actual outcomes differing materially from those projected in these statements. No statement contained herein constitutes a commitment by AVEVA to perform any particular action or to deliver any particular product or product features. Readers are cautioned not to place undue reliance on these forward-looking statements, which reflect our opinions only as of the date of this presentation.

The Company shall not be obliged to disclose any revision to these forward-looking statements to reflect events or circumstances occurring after the date on which they are made or to reflect the occurrence of future events.



 [linkedin.com/company/aveva](https://www.linkedin.com/company/aveva)

 [@avevagroup](https://twitter.com/avevagroup)

#### ABOUT AVEVA

AVEVA is a world leader in industrial software, providing engineering and operational solutions across multiple industries, including oil and gas, chemical, pharmaceutical, power and utilities, marine, renewables, and food and beverage. Our agnostic and open architecture helps organizations design, build, operate, maintain and optimize the complete lifecycle of complex industrial assets, from production plants and offshore platforms to manufactured consumer goods.

Over 20,000 enterprises in over 100 countries rely on AVEVA to help them deliver life's essentials: safe and reliable energy, food, medicines, infrastructure and more. By connecting people with trusted information and AI-enriched insights, AVEVA enables teams to engineer efficiently and optimize operations, driving growth and sustainability.

Named as one of the world's most innovative companies, AVEVA supports customers with open solutions and the expertise of more than 6,400 employees, 5,000 partners and 5,700 certified developers. The company is headquartered in Cambridge, UK.

Learn more at [www.aveva.com](https://www.aveva.com)

