

OCTOBER 2023

Extending operations control with the cloud - AVEVA Insight

Elliott Middleton – Director of Product Management - AVEVA Insight



AVEVA



Elliott Middleton

Product Director – operations control

AVEVA

elliott.middleton@aveva.com

Challenges for industrial operations

Accessibility for all teams

43% struggle making data more broadly accessible with the systems in place today.

IDC

Data-driven visibility

70-80% of time spent preparing and cleansing data as opposed to analysis.

LNS Research

Responsiveness to issues

Time and cost of break/fix repairs is three to five times the cost of pre-failure action.

Reliable Plant

Accelerating and scaling results

A responsive workforce is at least 20% more likely to overperform against corporate goals.

Gartner

“Long-held aspirations of optimizing business value while simultaneously reducing risk are now within reach as a result of technological advances in the areas of connectivity, cloud, and contextualization.

These technologies make data-driven operations possible.”

IDC, 2023

Additional challenges for supervisory systems



- Dominate staff attention
- Create systems for routine issues
- Find root cause of new problems



- Isolated from the Internet for security
- Availability & performance not dependent on Internet
- Not readily accessible to potential users



- Names unfamiliar to outside users
- Separated from broader operational context

Deployment strategies



Online Solutions

- Consider for future
- Next refresh cycle

Hybrid

- Supplement on-premises
- Realize the value
- Minimize risk

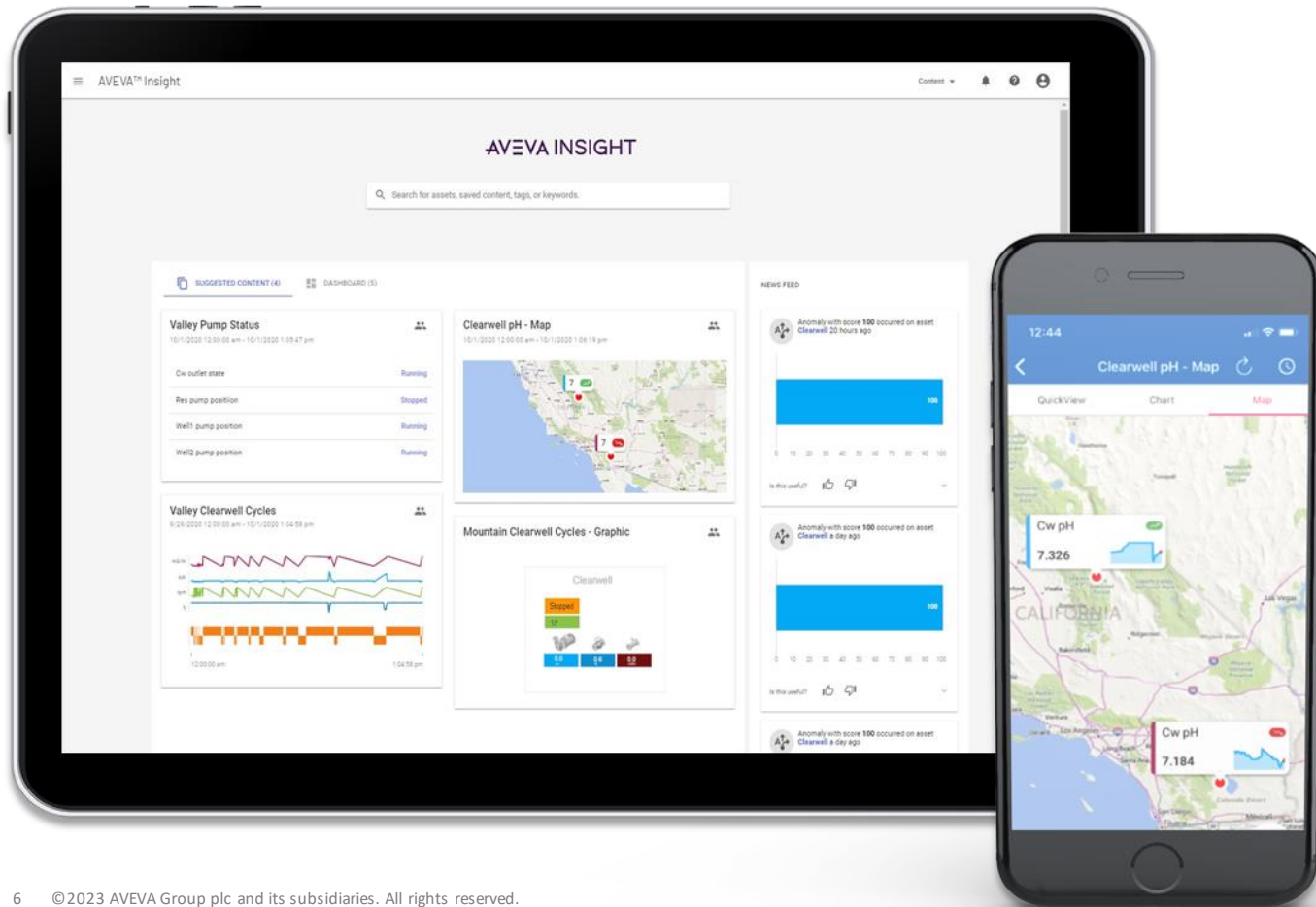
Existing Investments

- Infrastructure
- Applications



AVEVA Insight

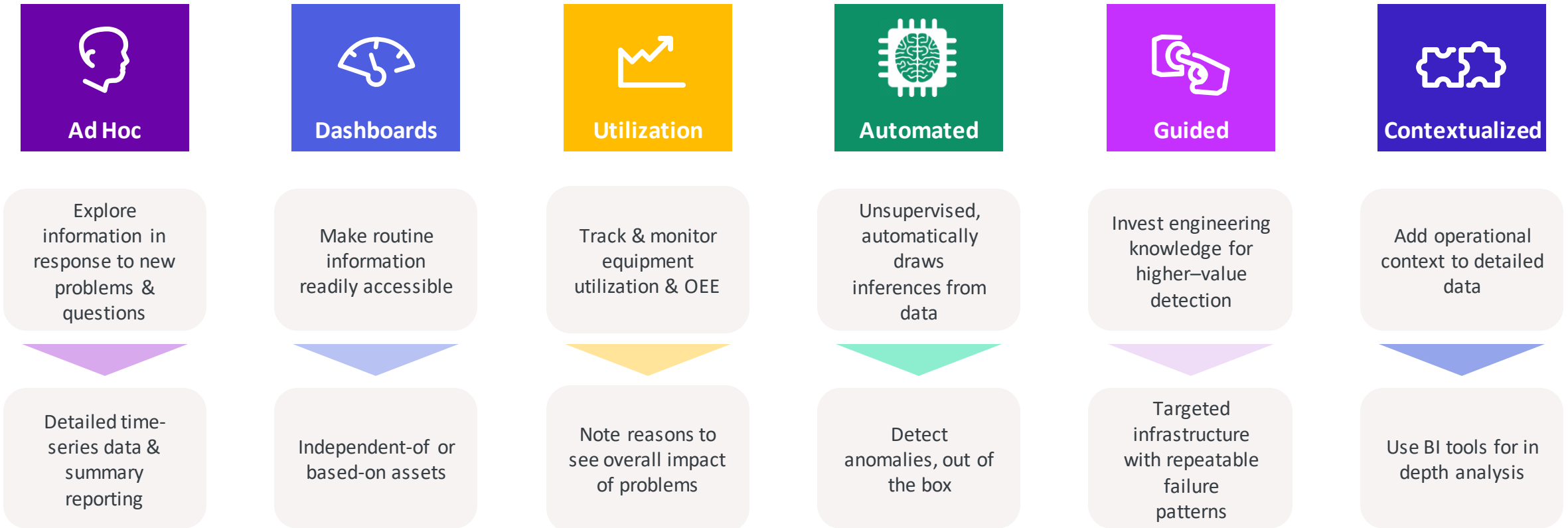
Easy-to-use cloud-based solution, enabling your teams to collaboratively manage your operations and assets from anywhere, at any time



AVEVA Insight gives you easy access to actionable information in the cloud. Its no-code, self-service, fit-for-purpose analytics work for ordinary operations users—not just data scientists.

- Unlock and share critical data in the cloud
- Connect workers and increase collaboration
- Improve operational performance and asset reliability

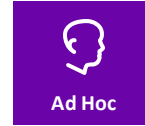
Analysis in AVEVA Insight



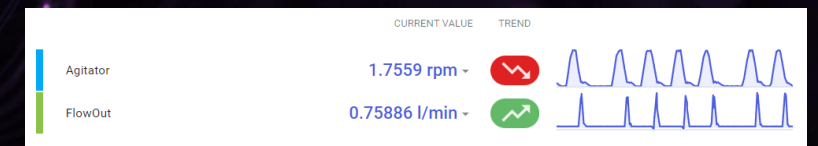
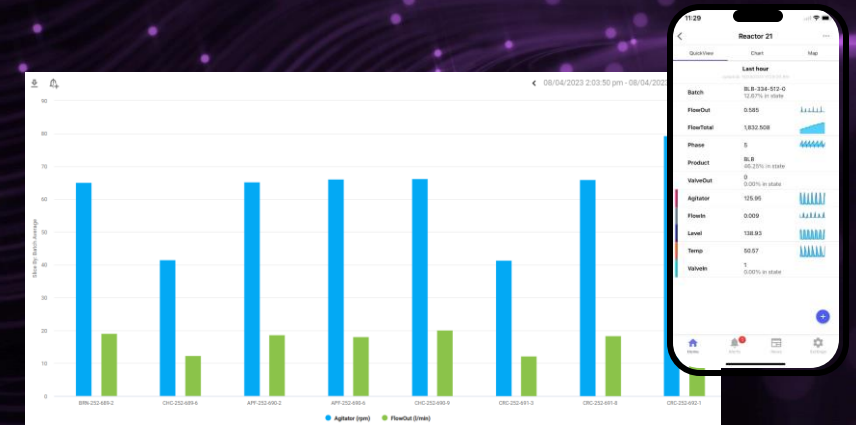
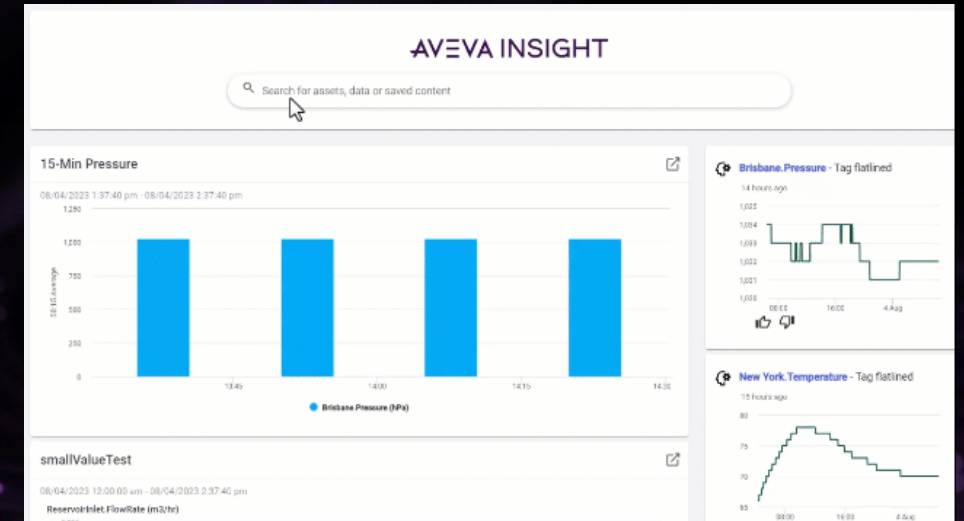
Capabilities

AVEVA

Ad Hoc Analysis



- Ideal for New Scenarios
 - Newly created applications
 - New problems/questions in existing applications
 - New users, unfamiliar with naming conventions
- Search-based
 - Quickly discover available information
 - Immediate results encourage exploration
 - Forgiving for new users
 - Basis for 2/3 of usage
- Charts suitable for varied use cases

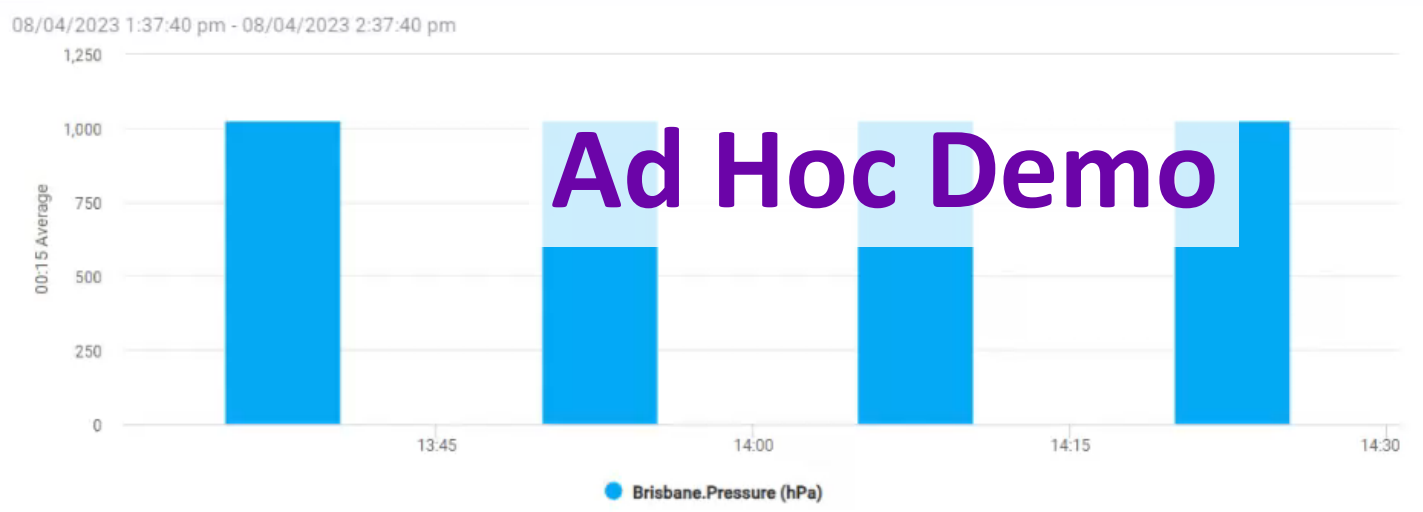


- Home
- Alerts
- Alarms
- Assets
- Lists
- Content
- Dashboards
- News
- Equipment Efficiency
- OEE Analysis
- Strategize
- Administration
- Classic Look

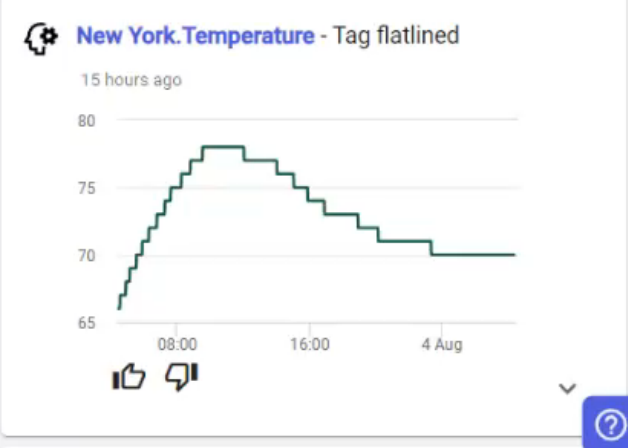
AVEVA INSIGHT

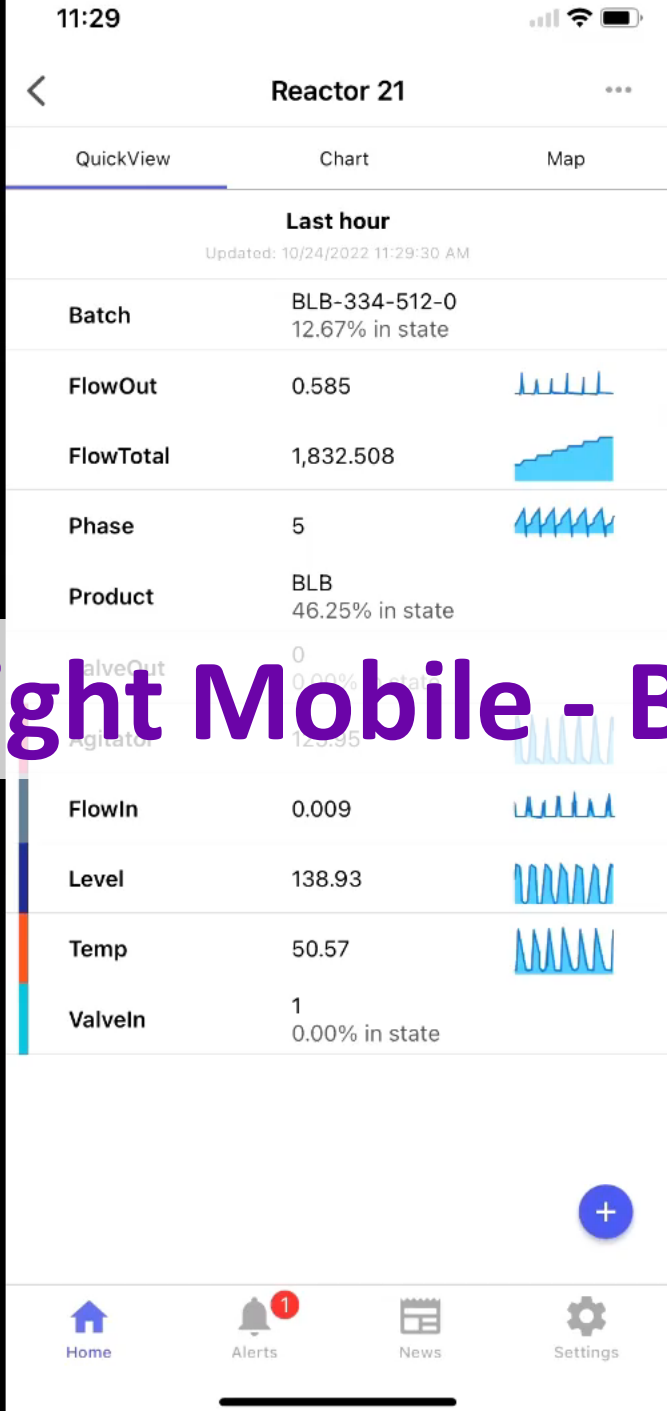
Search for assets, data or saved content

15-Min Pressure



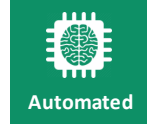
smallValueTest



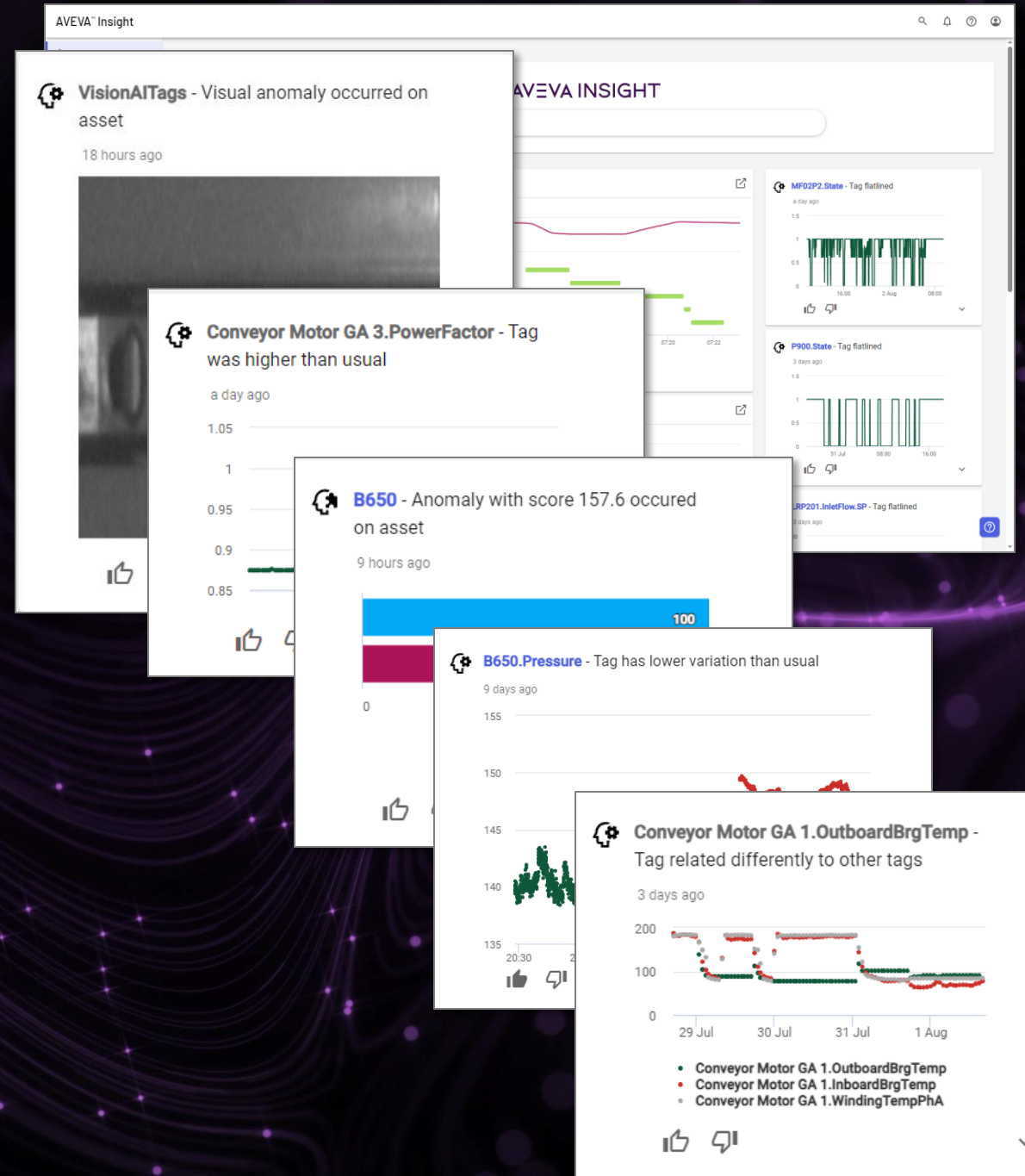


AVEVA Insight Mobile - Basic Demo

Automated Analytics



- Fully Automatic
 - No configuration required, just publish data
 - Learns “normal” behavior, including some interactions
- Newsfeed
 - Built into home page
 - Curated based on significance, feedback & volume
- Limitations
 - May report insignificant discoveries
 - No direct tuning
 - Not as powerful as engineered analytics



AVEVA Insight – Guided Analytics



- Easy, self-service AI models for Anomaly Detection on assets or production for reliability
- Use simple, step-by-step workflow to:
 - Select tags
 - Define Training Window
 - Define operational modes and filter (option)
 - Train
 - Automatic execution and publishing of News
- Guided Analytic model types and use cases will grow in the future

The screenshot displays the 'Configured Model Details' window in the AVEVA Insight application. The window is titled 'Configured Model Details' and has a close button in the top right corner. It contains the following sections:

- Name:** Motor1_Anomaly_3 (Model Name)
- Model Type:** Anomaly Detection
- Tags:** A search bar with the text 'Search for tags in this asset' and a list of tags: 'GuidedAnalytics_Roaster.Conveyor Motor GA 1.InboardVib', 'GuidedAnalytics_Roaster.Conveyor Motor GA 1.OutboardBrgTemp', and three partially visible tags. A toggle switch for 'Search All Tags' is present.
- Training Window:** Training Start Date: 8/8/2020

Overlaid on the bottom right is a 'News Feed' window. It shows a notification: 'Anomaly with score 100 occurred on asset [Motor1](#) 5 hours ago'. Below the notification is a horizontal bar chart with three bars: a blue bar at 100, a purple bar at 85.9, and an orange bar at 31.4. The x-axis ranges from 0 to 100. At the bottom of the news feed, there are icons for 'Is this useful?' (thumbs up and thumbs down), a pagination indicator '< 16 of 500+ >', and a calendar icon.

Motor1


New York Plant

Asset Info

- New York Plant
- Electric Motors - Alterna...
- Conveyor Motor
- Motor1
- Description not defined
- 40.981633, -73.917178, 15
- (GMT-05:00) Eastern Time - Iqaluit

Conveyor Motor 1

Roaster Conveyor Motor #1



Power (Watts)	0.0000
Inboard Bearing Temp (F)	88.50
Outboard Bearing Temp (F)	174.85
Anomaly Score (100)	100.00

Guided Analytics Demo

News Feed

Anomaly with score **98.4** occurred on asset [Motor1](#) a day ago



Is this useful?

< 7 of 500+ >

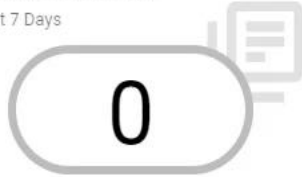
Active Alarms



1 min

Journal Entries

Last 7 Days



1 hr

Equipment Efficiency

Last 24 hours



1 hr

Associated Content

- Conveyor Motor 1
- Roaster Conveyor Motor 1
- Roaster Conveyor Motor 1 Status Board

Location



Guided Analytics Models

Model Name	Last Detected	Last Score	Status
Motor1_Anomaly_4	12 hours ago	100	Completed

< 1 - 3 of 3 >

AVEVA Insight Performance



- **Manual & Automated Data Collection**

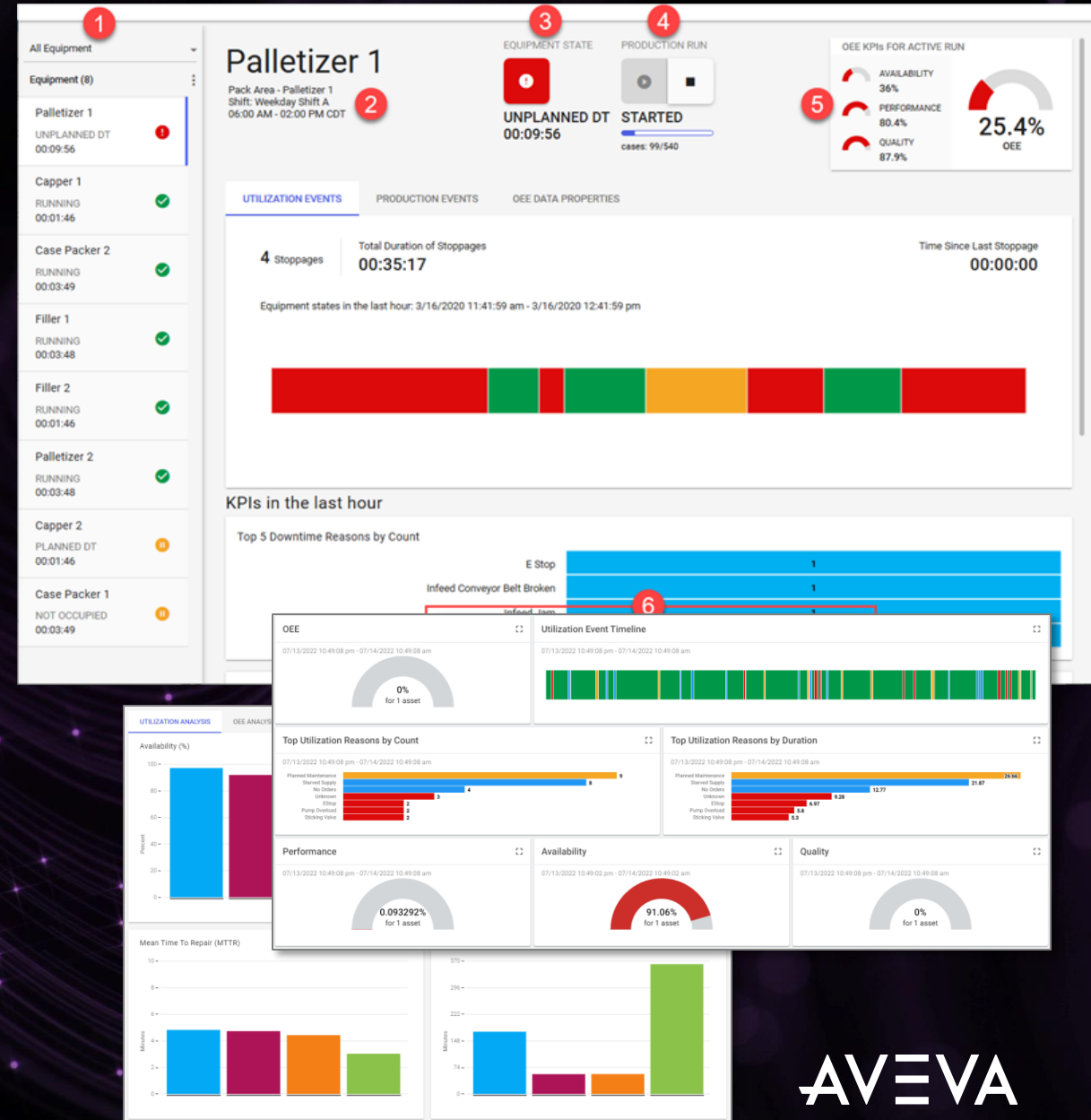
- Utilization & Production Events

- **Equipment and Line Monitoring**

- Utilization Events & KPIs
- OEE, Availability, Performance, & Quality KPIs
- Production Run Status vs. Plan
- Additional Context Events

- **Reporting & Analysis**

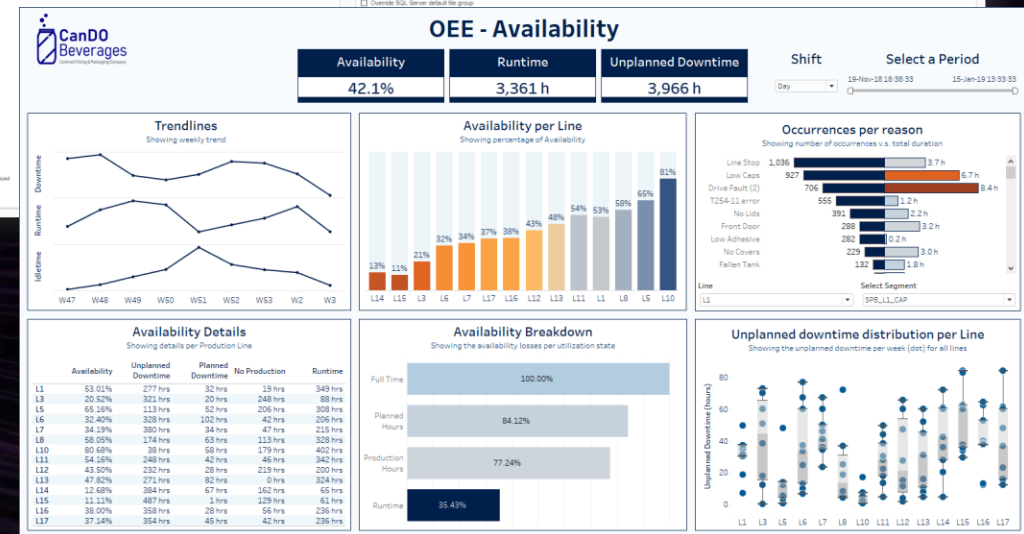
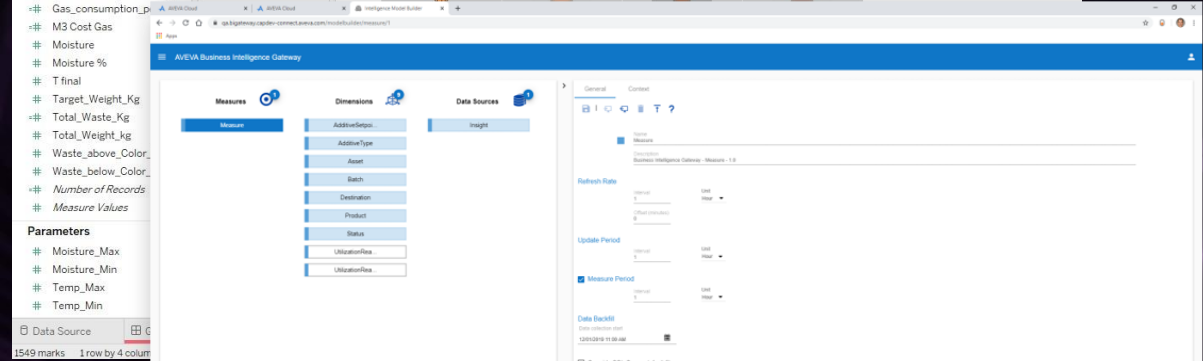
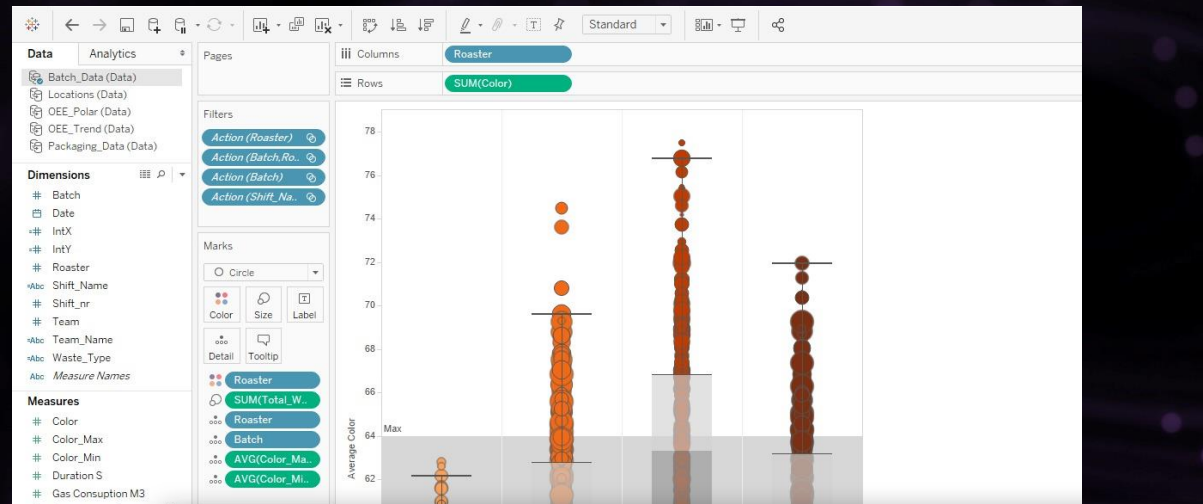
- KPI Comparison Across Equipment
- Detailed Root Cause Analysis



AVEVA BI Gateway



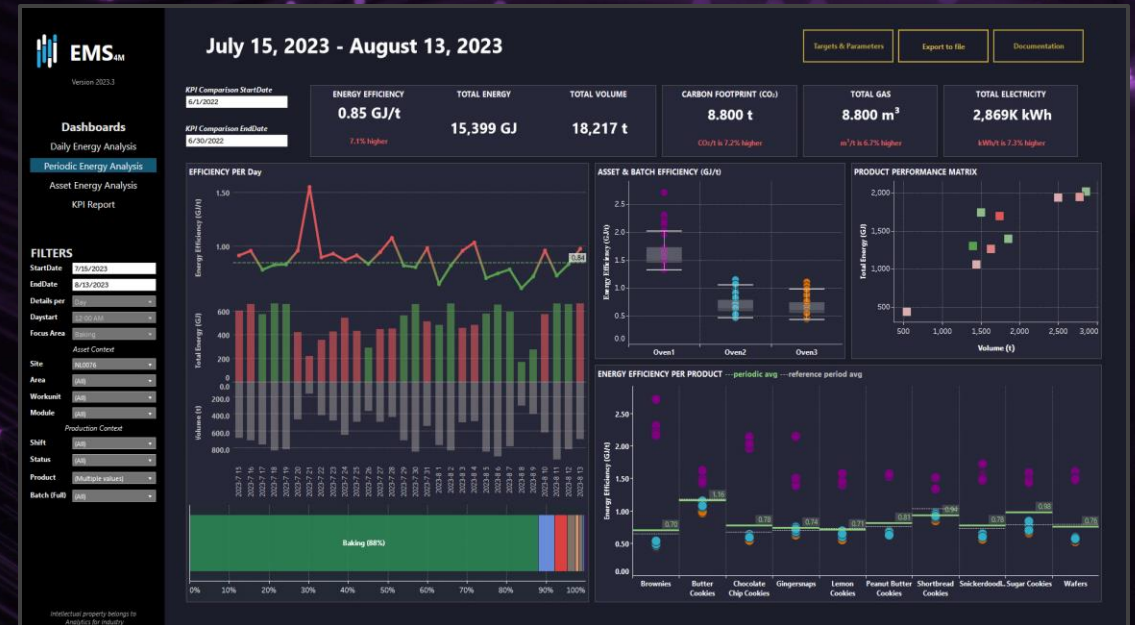
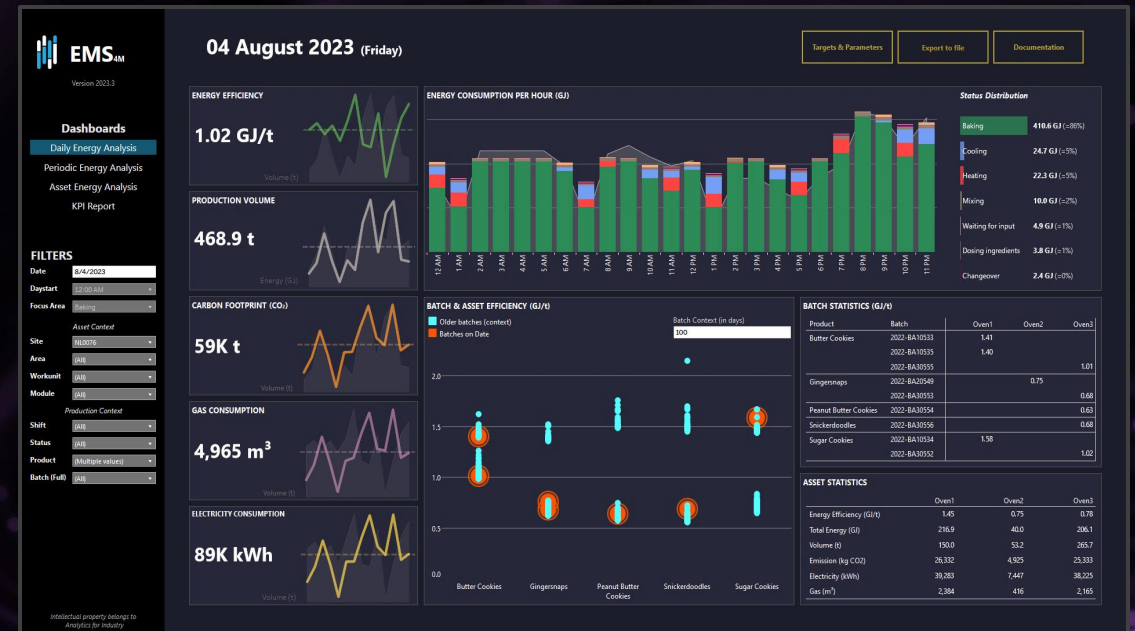
- Make better use across the organization of valuable operational and IIoT data
- Provide contextualized insights combining both industrial, time-series and business data
- Easy deployment of analytics throughout the enterprise
- Automate the extraction, transformation and storage of operational KPIs and metrics
- Use preferred IT/BI tools to query data from the operational space, removing the need to work with REST APIs



Analytics for Industry



- Energy Management Solution Built On
 - AVEVA Insight
 - AVEVA BI Gateway
 - Microsoft Power BI



Dashboards

Daily Energy Analysis

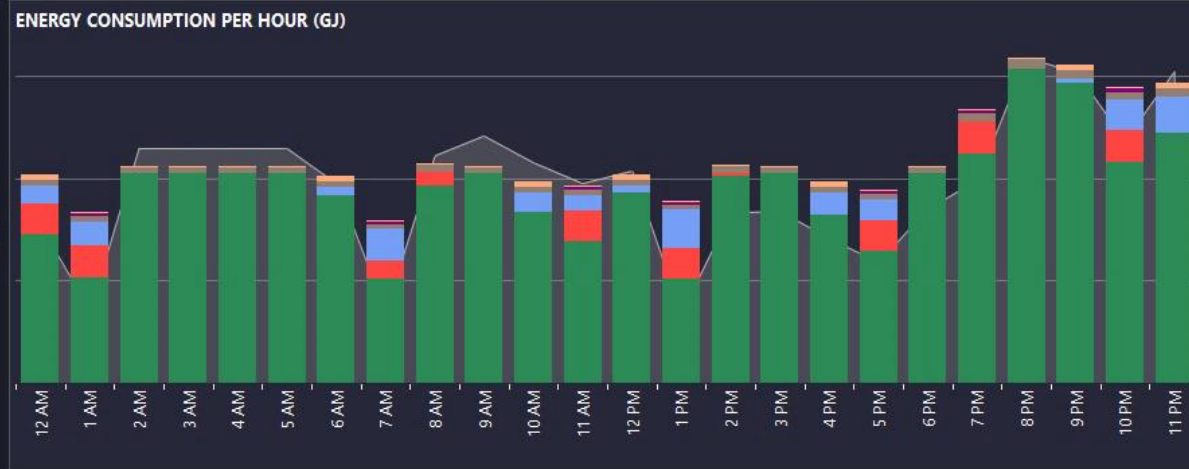
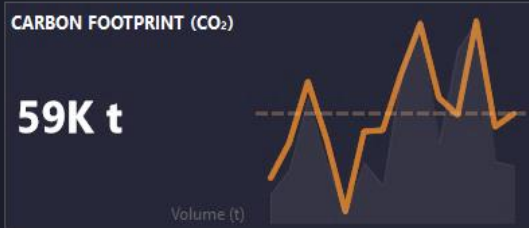
Periodic Energy Analysis

Asset Energy Analysis

KPI Report

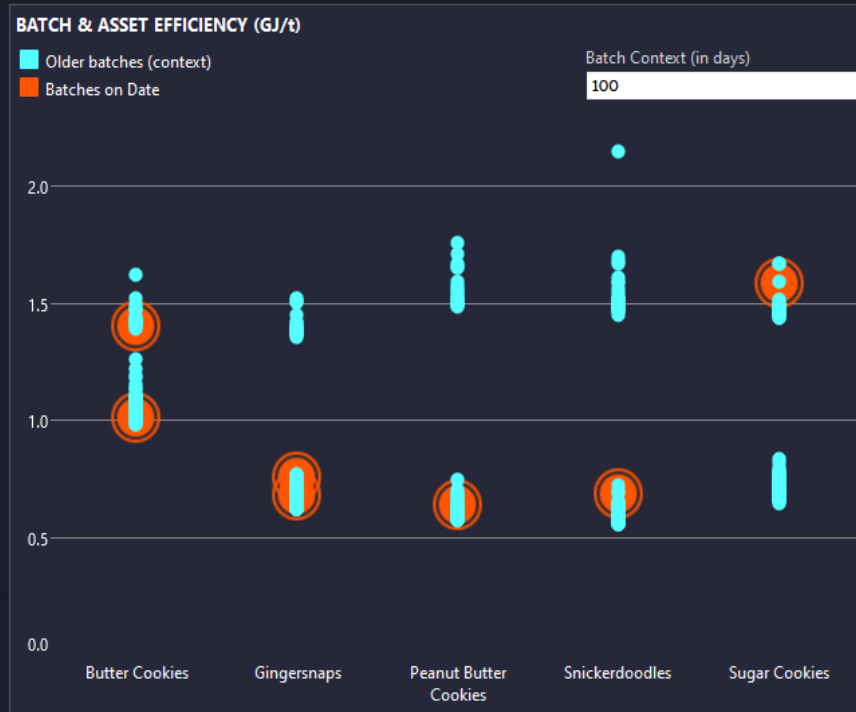
FILTERS

- Date:
- Daystart:
- Focus Area:
- Asset Context
- Site:
- Area:
- Workunit:
- Module:
- Production Context
- Shift:
- Status:
- Product:
- Batch (Full):



Status Distribution

Baking	410.6 GJ (=86%)
Cooling	24.7 GJ (=5%)
Heating	22.3 GJ (=5%)
Mixing	10.0 GJ (=2%)
Waiting for input	4.9 GJ (=1%)
Dosing ingredients	3.8 GJ (=1%)
Changeover	2.4 GJ (=0%)



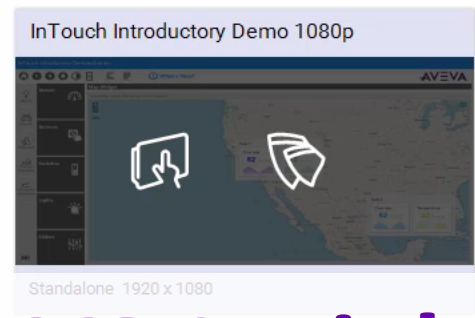
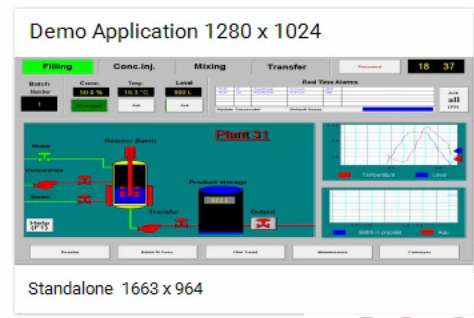
BATCH STATISTICS (GJ/t)

Product	Batch	Oven1	Oven2	Oven3
Butter Cookies	2022-BA10533	1.41		
	2022-BA10535	1.40		
	2022-BA30555			1.01
Gingersnaps	2022-BA20549		0.75	
	2022-BA30553			0.68
Peanut Butter Cookies	2022-BA30554			0.63
Snickerdoodles	2022-BA30556			0.68
Sugar Cookies	2022-BA10534	1.58		
	2022-BA30552			1.02

ASSET STATISTICS

	Oven1	Oven2	Oven3
Energy Efficiency (GJ/t)	1.45	0.75	0.78
Total Energy (GJ)	216.9	40.0	206.1
Volume (t)	150.0	53.2	265.7
Emission (kg CO ₂)	26,332	4,925	25,333
Electricity (kWh)	39,283	7,447	38,225
Gas (m ³)	2,384	416	2,165

Sounds good, but how
much work is this?



AVEVA Insight - Getting Started Demo

On-premises HMI/SCADA to Insight

Publish from existing AVEVA HMI/SCADA system to the cloud

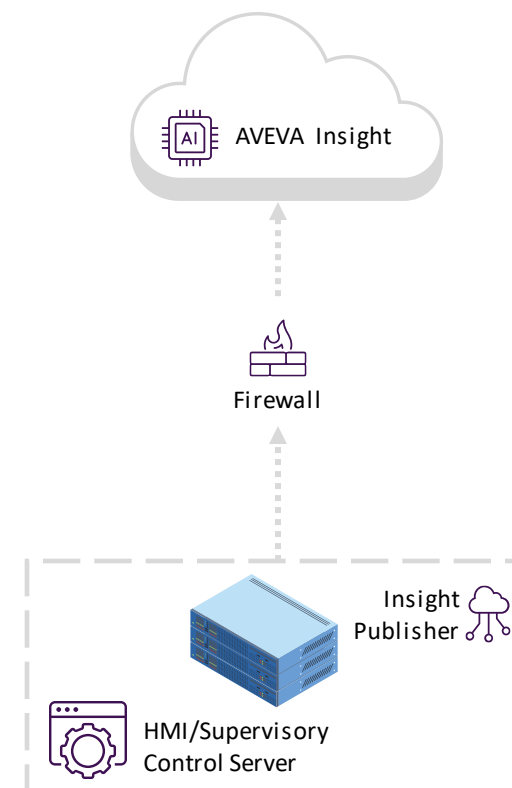
- No assembly required
- Easily import existing HMI applications
- Frictionless to find & present the right information

Cost-effective even for very small applications

- HMI-only embedded (OEM) applications
- Vertical applications (e.g. water, coal seam gas)
- Small applications in large companies (e.g. containerized “plant” in emerging economies)

Remove obstacles to capturing & using historical data

- De-skill setup (5-minutes or less, zero training)
- Make information readily accessible
- Eliminate routine maintenance (disk, backups, etc.)



AVEVA Insight: data connectivity

Built-in publishers

Cloud-enabled AVEVA products

AVEVA Edge
AVEVA InTouch HMI
AVEVA Plant SCADA
AVEVA System Platform
AVEVA Enterprise SCADA
AVEVA Historian
AVEVA Communication Drivers

Standalone drivers

18 Industry standard protocols

Allen Bradley – ABCIP
Allen Bradley – ABTCP
Beckhoff – TWINCAT
General Electric – GESRTP
Mitsubishi – MELSEC
Modicon – MBTCP
Omron – OMRONFINS
Schneider Electric – SOMAC
Siemens – SIDIRECT
Standards – BACLITE
Standards – CODESYS
Standards – Gateway – OPC
Standards – Gateway – OPC UA
Standards – Gateway – SuiteLink
Standards – MQTT
Standards – SNMP
Standards – WebSvc
Texas Instruments – TI500

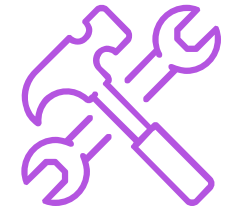
REST API

Open internet standards



SDK

Custom connectivity



Network Segmentation

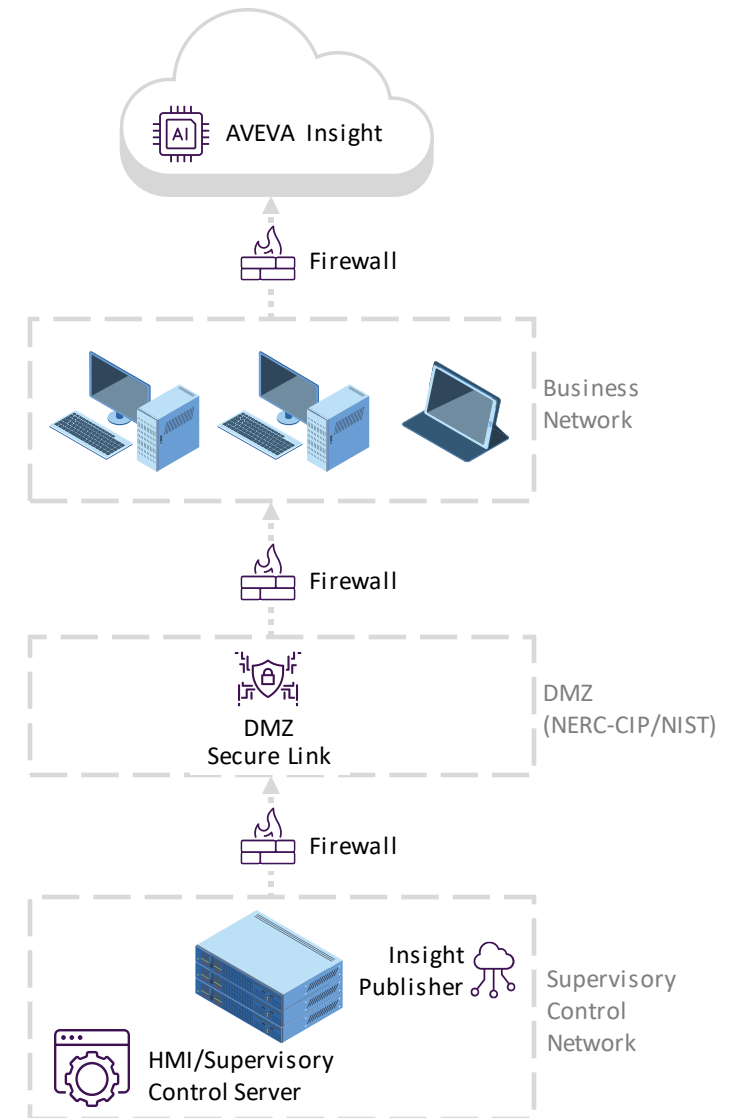
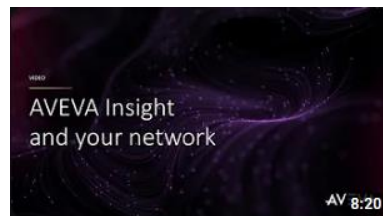
- Supervisory systems fully isolated from Business, Internet
- Narrowly limited access via DMZ

Method

- Deploy DMZ Secure Link into DMZ
- Open outbound connection at firewall (HTTPS port 443)
- Narrowly limited “allow list” of AVEVA Insight endpoints
- Supports corporate web proxy & other DMZ Secure Link instances
- All connections one-way (outbound) from Supervisory



Watch the video
to learn more



- Home
- Alerts
- Alarms
- Assets
- Lists
- Content
- Dashboards
- Equipment Efficiency
- OEE Analysis
- Administration
- Classic Look

AVEVA INSIGHT

Search for assets, data or saved content

Mixer State

11/02/2022 9:56:22 am - 11/02/2022 10:56:22 am

Make information more accessible

Fuel process improvement initiatives

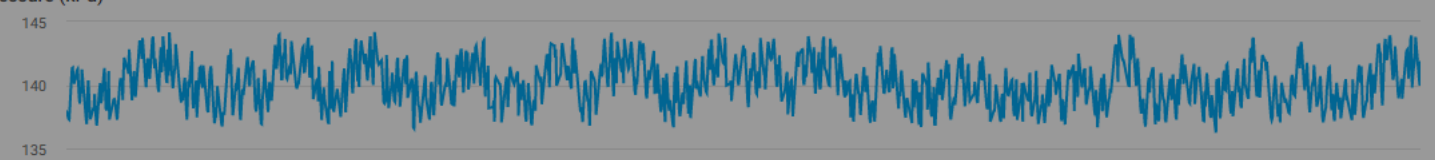
Enable self-service analysis & reporting

Product Valveln Level (liters)

Boiler 100

11/02/2022 12:00:00 am - 11/02/2022 10:56:33 am

Pressure (kPa)

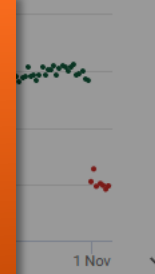


Temperature (DegC)



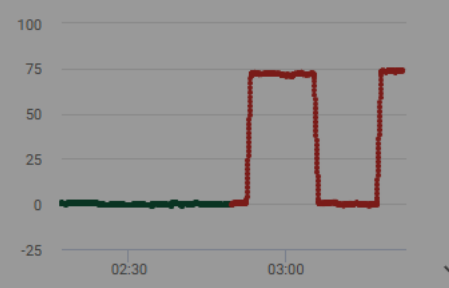
B100.Pressure - Tag was lower than usual

2 days ago



usual

15 hours ago



City of Ashland, Oregon

Enabling field technicians with real-time information

The City of Ashland Water Department is responsible for water source, treatment, and distribution of 7 millions gallons of water a day to 21,000 residents along the Oregon-California border. The distribution system consists of over 70 miles of water lines, 5 pump stations, 29 pressure reducing stations, 925 fire hydrants, and over 6,700 individual services and meters.

Challenges

- Needed a mobile solution that would give in-field water technicians real-time information to monitor the system without laptops and VPNs

Goals

- Utilize AVEVA Insight to make data from historian and SCADA system instantly available to field technicians.

Results

- Reduction in manpower needed to support water operations.
- Automated system notifications, including on mobile devices.
- System access control / security built-in, with no additional overhead required.
- Field Technicians now have information at hand, ready for them, so they can interact, anytime day or night, and from anywhere with cellular activity

“ Field Technicians now have information at hand, ready for them, so they can interact, anytime day or night, and from anywhere with cellular activity ”



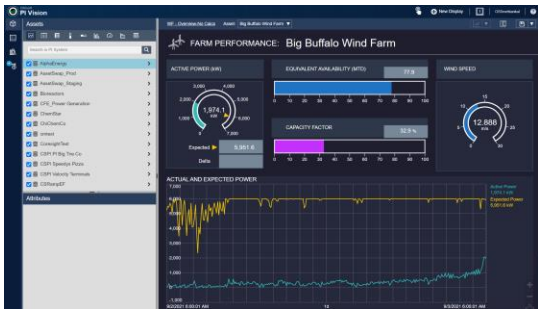
Ensuring safe water for
21,000 residents



7 million gallons
managed daily



No VPN Required
for mobile, remote, secure
access to data



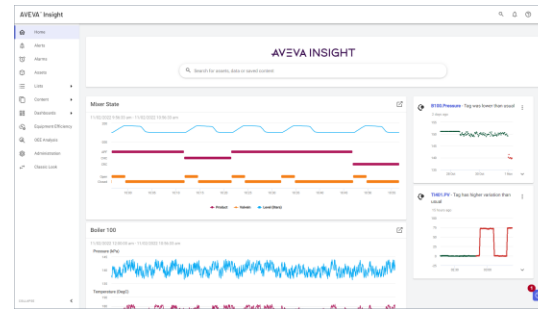
AVEVA PI Vision

- On-premises
- Browser-based
- Operations-user focused
- Self-service dashboard creation
- Uses data from PI Server



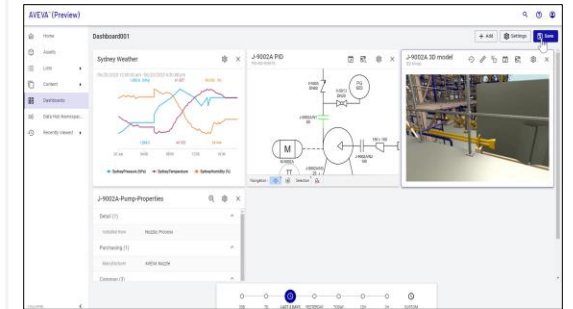
AVEVA Unified Operations Center

- On-premises
- Desktop and browser
- Enterprise-user focused
- Pre-defined application, with navigation contextualization
- Uses Historian, PI Server, and third-party data sources



AVEVA Insight

- Cloud native
- Browser and mobile app
- Operator-user focused
- Self-service dashboard creation
- Built-in data storage, data sources are primarily HMI/SCADA or standard protocol based



AVEVA Data Hub + visualization services

- Cloud native
- Browser-based
- Enterprise-user focused
- Self-service and pre-defined dashboard creation
- Self-service uses Data Hub data
- Pre-defined can use Data Hub and third-party data sources

AVEVA Insight: process analytics

Simple to start, simple to use, out-of-the-box

- Secure access from any location, any device
- Search-based navigation, time series analysis, process graphics, geolocation / mapping, and customizable dashboards
- Utilization and efficiency analysis, condition management, alerts and notifications
- Automated analytics using unsupervised machine learning
- Connectivity to AVEVA HMI/SCADA products, 18 industry standard protocols, and REST API
- All designed with security in mind. Learn more <https://trust.aveva.com>



Unlock trapped data and make it accessible from the cloud in minutes



Break down data silos with industrial analytics for everyone



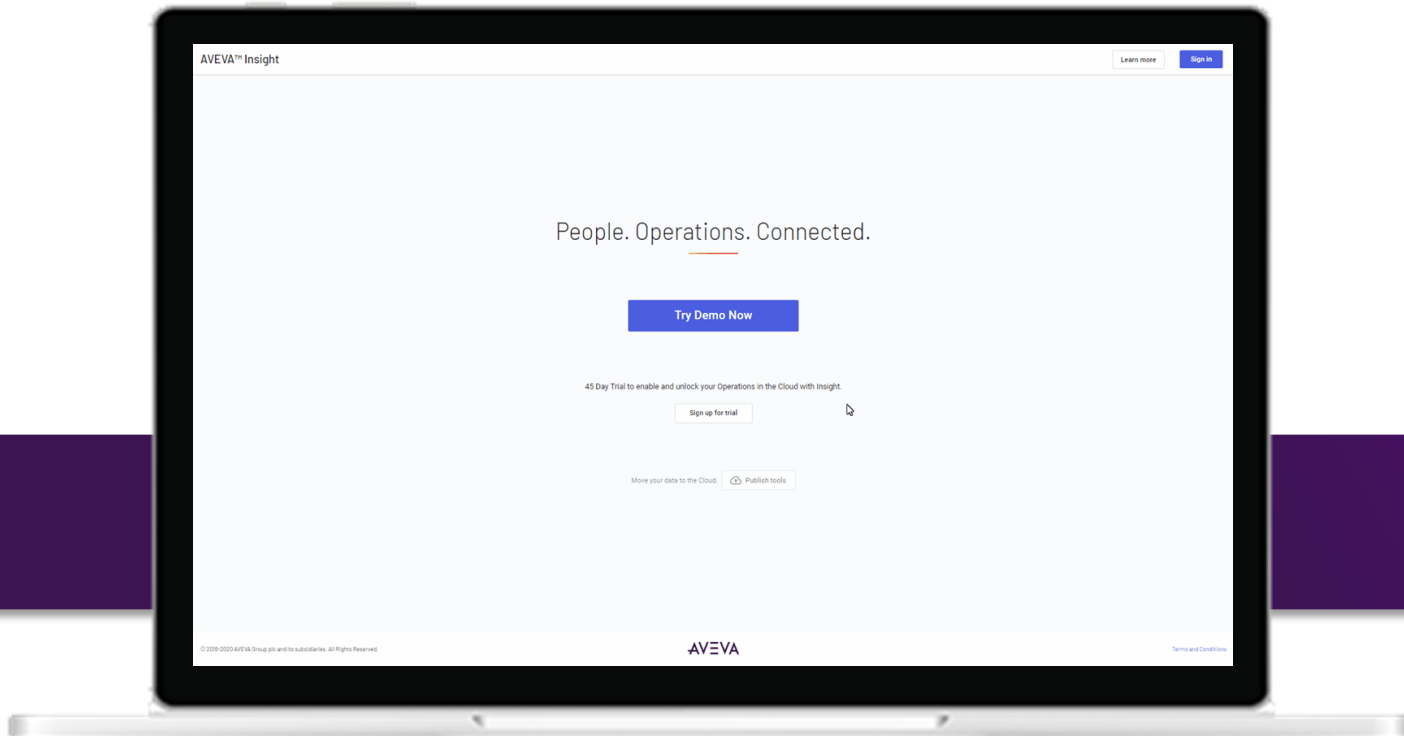
Kickstart your digital transformation with a simple-to-use system and fast adoption



Reduce “windshield time” with mobile access to operational data

Easy to get started

Unlock your operations in the cloud with AVEVA Insight



- Register for the live demo
- Start your FREE 45-day trial
- Use your own data
- Prove it for yourself!

<https://aveva.com/aveva-insight-demo>

Questions?

Please wait for the microphone.
State your name and company.



Please remember to...

Navigate to this session in the mobile app to complete the survey.



Thank you!

This presentation may include predictions, estimates, intentions, beliefs and other statements that are or may be construed as being forward-looking. While these forward-looking statements represent our current judgment on what the future holds, they are subject to risks and uncertainties that could result in actual outcomes differing materially from those projected in these statements. No statement contained herein constitutes a commitment by AVEVA to perform any particular action or to deliver any particular product or product features. Readers are cautioned not to place undue reliance on these forward-looking statements, which reflect our opinions only as of the date of this presentation.

The Company shall not be obliged to disclose any revision to these forward-looking statements to reflect events or circumstances occurring after the date on which they are made or to reflect the occurrence of future events.

 [linkedin.com/company/aveva](https://www.linkedin.com/company/aveva)

 [@avevagroup](https://twitter.com/avevagroup)

ABOUT AVEVA

AVEVA is a world leader in industrial software, providing engineering and operational solutions across multiple industries, including oil and gas, chemical, pharmaceutical, power and utilities, marine, renewables, and food and beverage. Our agnostic and open architecture helps organizations design, build, operate, maintain and optimize the complete lifecycle of complex industrial assets, from production plants and offshore platforms to manufactured consumer goods.

Over 20,000 enterprises in over 100 countries rely on AVEVA to help them deliver life's essentials: safe and reliable energy, food, medicines, infrastructure and more. By connecting people with trusted information and AI-enriched insights, AVEVA enables teams to engineer efficiently and optimize operations, driving growth and sustainability.

Named as one of the world's most innovative companies, AVEVA supports customers with open solutions and the expertise of more than 6,400 employees, 5,000 partners and 5,700 certified developers. The company is headquartered in Cambridge, UK.

Learn more at www.aveva.com