

OCT 2023

Extending operations control with the cloud - AVEVA™ Development Studio & AVEVA™ Integration Studio

Brian Leonard – Product Manager - operations control



AVEVA

AVEVA Operations Control

Hybrid SaaS Platform

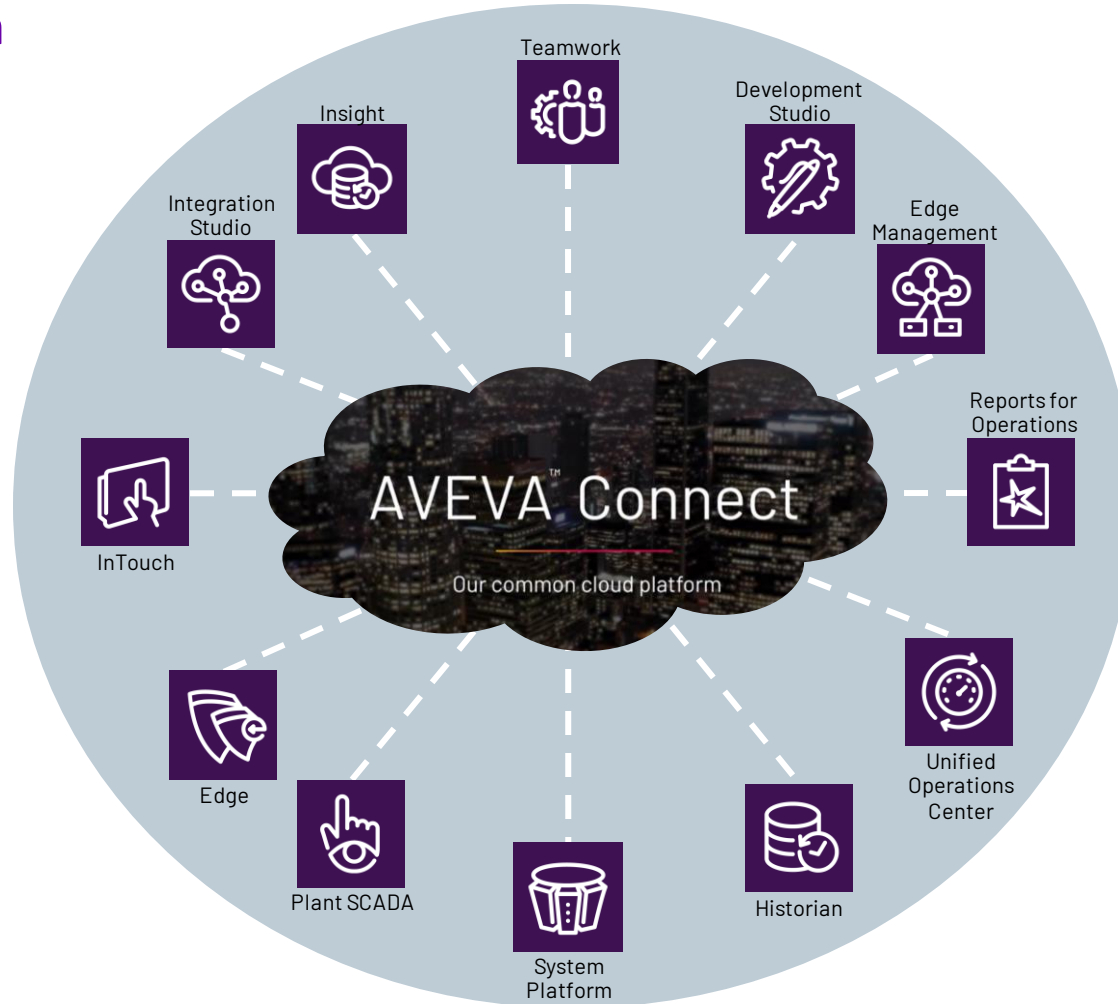
On Premise Products

Microsoft

- Word
- Excel
- PowerPoint
- Outlook
- OneNote
- OneDrive

AVEVA

- InTouch
- Edge
- Communications Drivers
- System Platform
- Plant SCADA
- Historian
- Unified Operations Center
- Teamwork
- Insight



Hybrid Cloud Suite

Microsoft

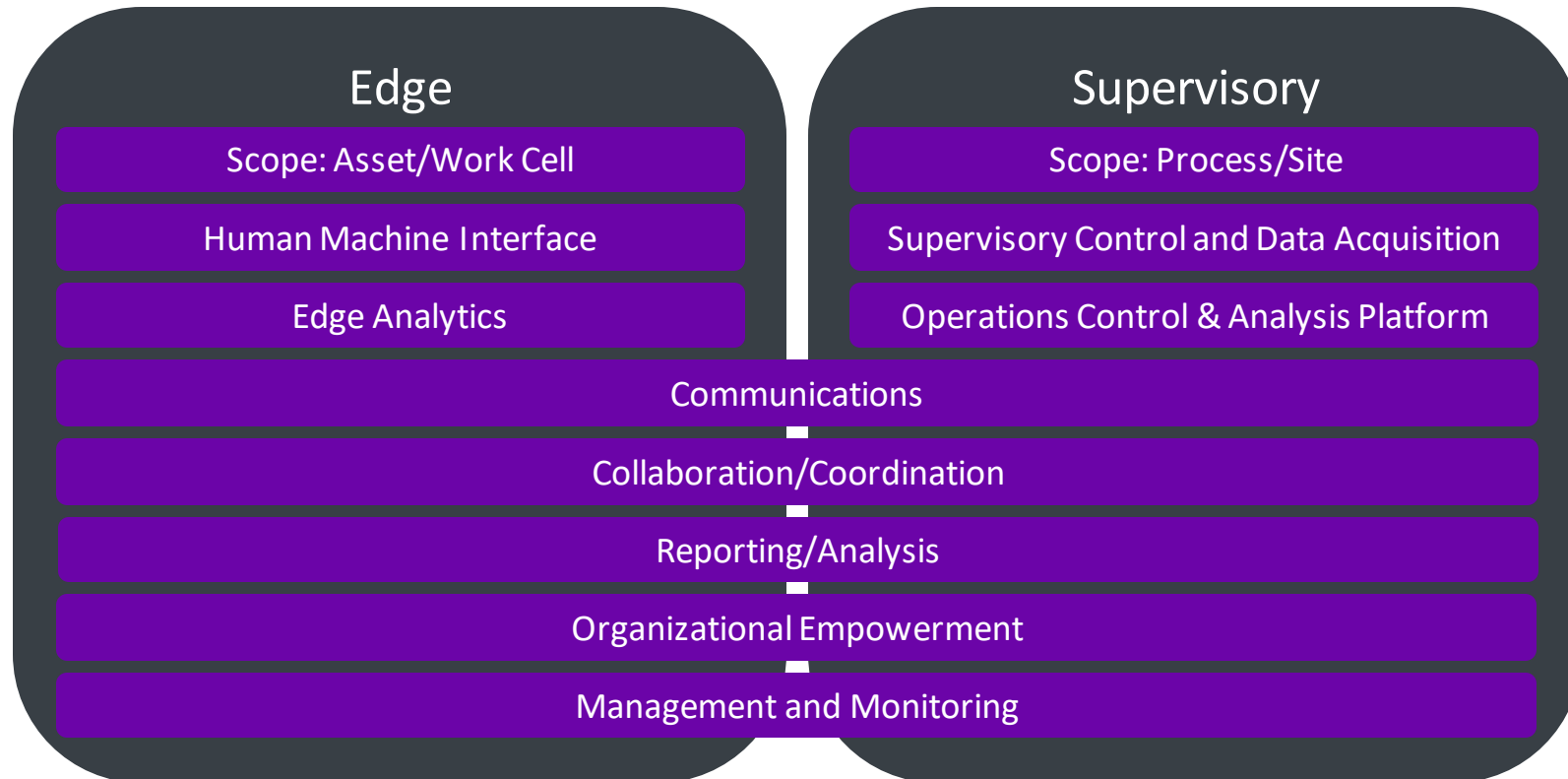
- Microsoft 365 Family
- Microsoft 365 Business Basic
- Microsoft 365 Business Standard

AVEVA

- Operations Control Edge
- Operations Control Supervisory
- Operations Control Enterprise

AVEVA Operations Control

Unified Platform for All Aspects of Industrial Operations



AVEVA Development Studio



Development Studio

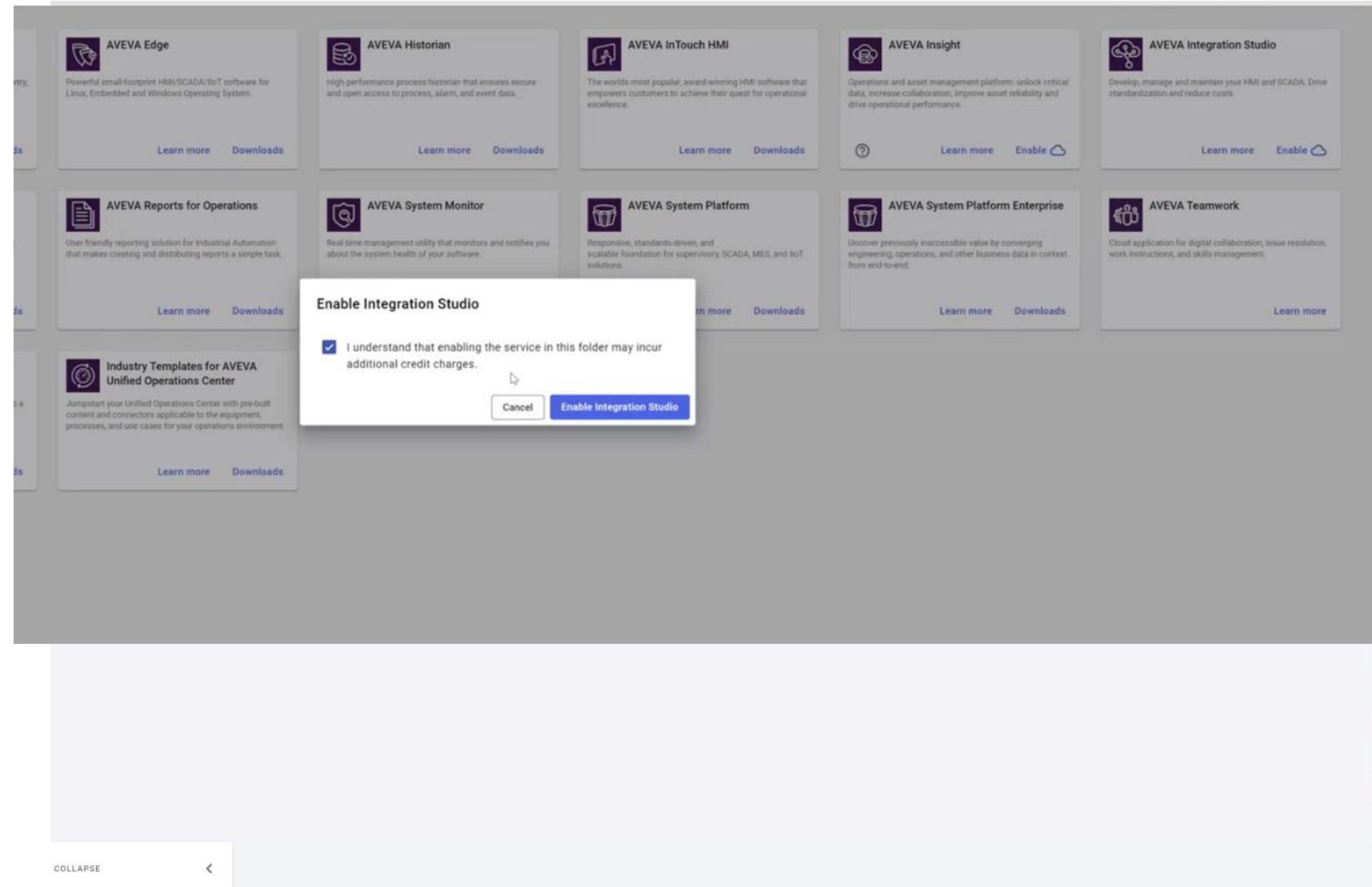
Introduction to cloud development

- Show architecture
- Block diagram of capabilities
- Video/live demo of product or use the screenshots
- Clarify the difference between “dev studio” licenses and the SaaS Dev Studio

Development Studio

Entitlement Access

- Enhanced UI
- License link
- Entitlement enhancements
- User enablement of services
- Teamwork link
- Training link



AVEVA Integration Studio



Integration Studio

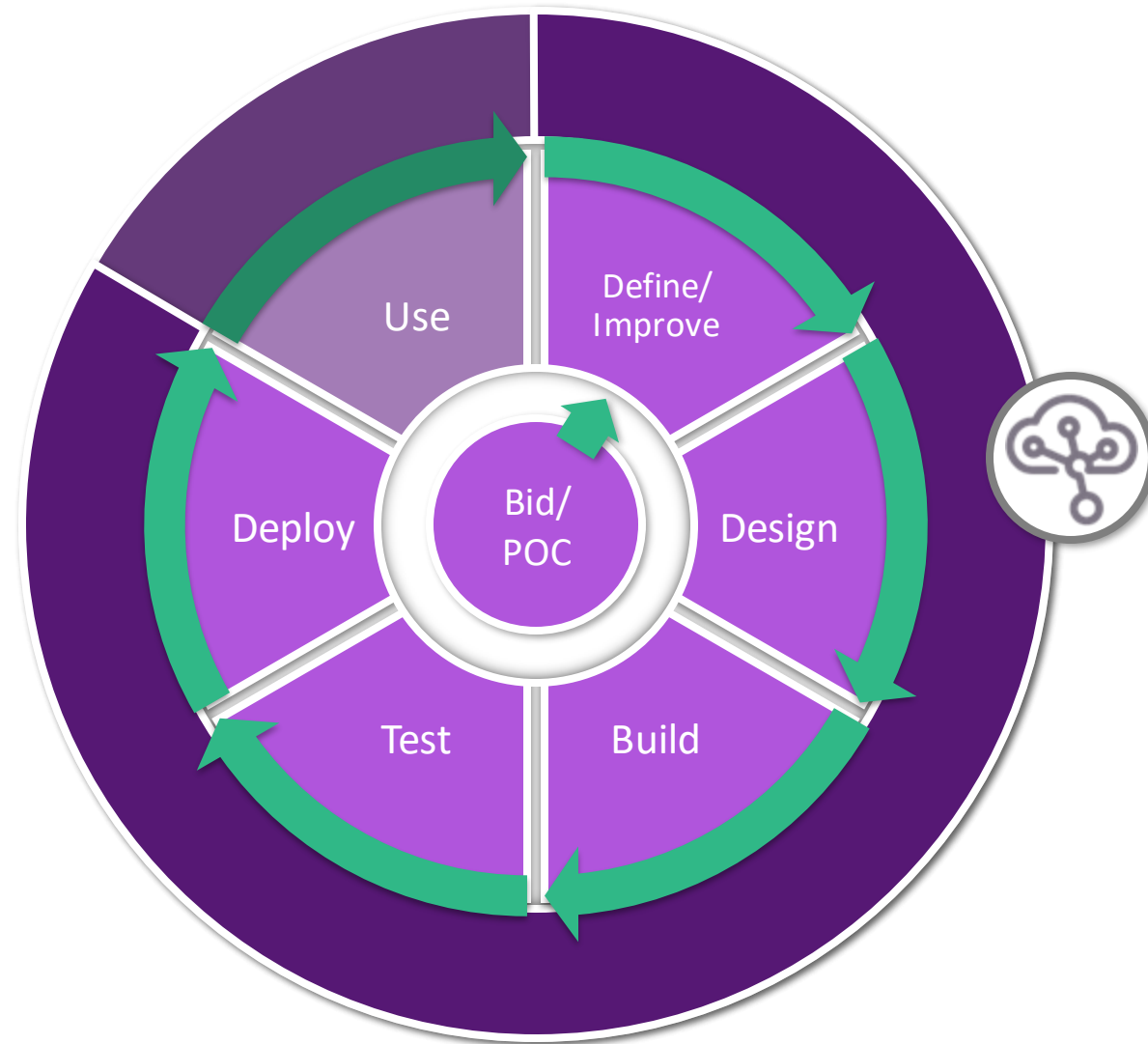
Project Lifecycle

First pass

- Lower up-front costs
- Inventory not a prerequisite to project Build phase
- Start the warranty clock as late as possible

Continue the value

- Easily duplicate entire project
- Test upgrades
- Version management
- Training for customers as well as your staff





System Platform 2023

Application Server

InTouch

Historian

...

Software Suite



System Platform 2023

Application Server

InTouch

Historian

...

PlantSCADA 2023

Edge 2023

...

Software Suite

VM Management/Staging & Testing

GRNode
SystemPlatform



PREV

Create Galaxy Repository? ⓘ

TestGalaxy

System Platform Development Server ⓘ



Remote Development Workstation ⓘ



Runtime Client ⓘ



Historian Server ⓘ



InTouch Access Anywhere Secure Gateway ⓘ



InTouch Development ⓘ



InTouch Runtime ⓘ



Historian ⓘ



1k Week ...

56

56

56

56

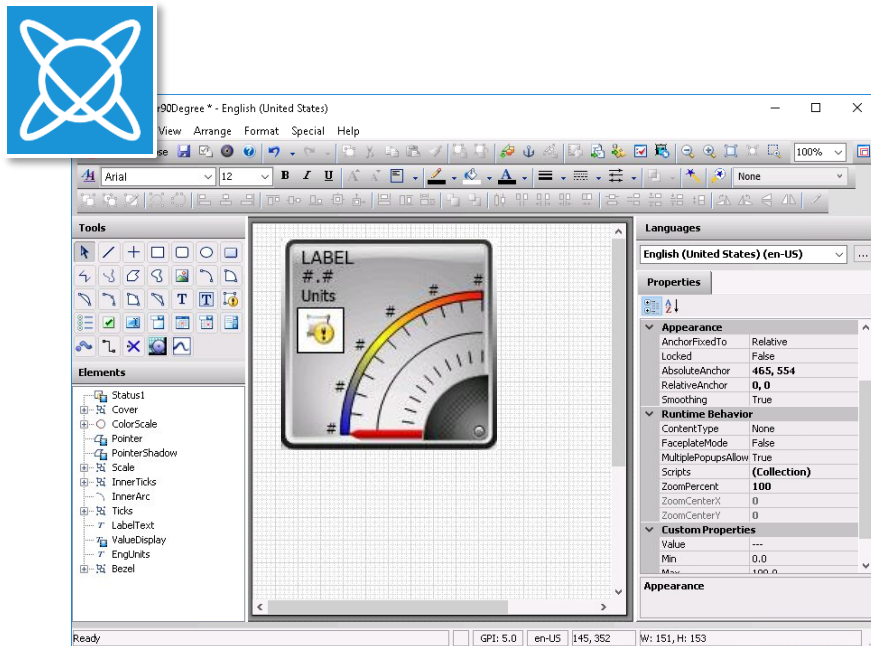
HER NODE

NEXT

Common Development

Develop once, use everywhere!

- Create custom Industrial Graphics
- Store them within Integration Studio
- Use them everywhere



© 2019 AVEVA Group plc and its subsidiaries. All rights reserved.



System Platform



OMI



InTouch HMI



Insight



Edge



Plant SCADA

AVEVA

Integration Studio

What we've been working on

- SECURITY!!
 - Removed older system suites out of support
 - Updated security agent on existing machines to force updates

Integration Studio

Fun stuff

- Multi-instance, Folder support
 - Will migrate all account-level to new Folder
 - Same number of seats per instance
- Seat deprecation
- Custom system suite management
- 2023 R2
- Patch support
- Instance management
 - Automatic deletion
 - Inactive file storage usage

Questions?

Please wait for the microphone.
State your name and company.



Please remember to...

Navigate to this session in the mobile app to complete the survey.



Thank you!

This presentation may include predictions, estimates, intentions, beliefs and other statements that are or may be construed as being forward-looking. While these forward-looking statements represent our current judgment on what the future holds, they are subject to risks and uncertainties that could result in actual outcomes differing materially from those projected in these statements. No statement contained herein constitutes a commitment by AVEVA to perform any particular action or to deliver any particular product or product features. Readers are cautioned not to place undue reliance on these forward-looking statements, which reflect our opinions only as of the date of this presentation.

The Company shall not be obliged to disclose any revision to these forward-looking statements to reflect events or circumstances occurring after the date on which they are made or to reflect the occurrence of future events.

 [linkedin.com/company/aveva](https://www.linkedin.com/company/aveva)

 [@avevagroup](https://twitter.com/avevagroup)

ABOUT AVEVA

AVEVA is a world leader in industrial software, providing engineering and operational solutions across multiple industries, including oil and gas, chemical, pharmaceutical, power and utilities, marine, renewables, and food and beverage. Our agnostic and open architecture helps organizations design, build, operate, maintain and optimize the complete lifecycle of complex industrial assets, from production plants and offshore platforms to manufactured consumer goods.

Over 20,000 enterprises in over 100 countries rely on AVEVA to help them deliver life's essentials: safe and reliable energy, food, medicines, infrastructure and more. By connecting people with trusted information and AI-enriched insights, AVEVA enables teams to engineer efficiently and optimize operations, driving growth and sustainability.

Named as one of the world's most innovative companies, AVEVA supports customers with open solutions and the expertise of more than 6,400 employees, 5,000 partners and 5,700 certified developers. The company is headquartered in Cambridge, UK.

Learn more at www.aveva.com