

OCTOBER 2023

Enabling agility and resilience through advanced planning & scheduling software

Presented by Sarah Williams and JP (Jean-Pierre) Caron

AVEVA





Sarah Williams

Director of Product Management

- PlanetTogether
- sarah.williams@planettogether.com



JP (Jean-Pierre) Caron

Senior Product Manager - MD MES and Scheduling

- Aveva
- jean-pierre.caron@aveva.com

“Companies with effective production planning processes achieved a **20% increase** in production output and a **30% reduction** in inventory holding costs compared to their counterparts with less efficient planning systems.”

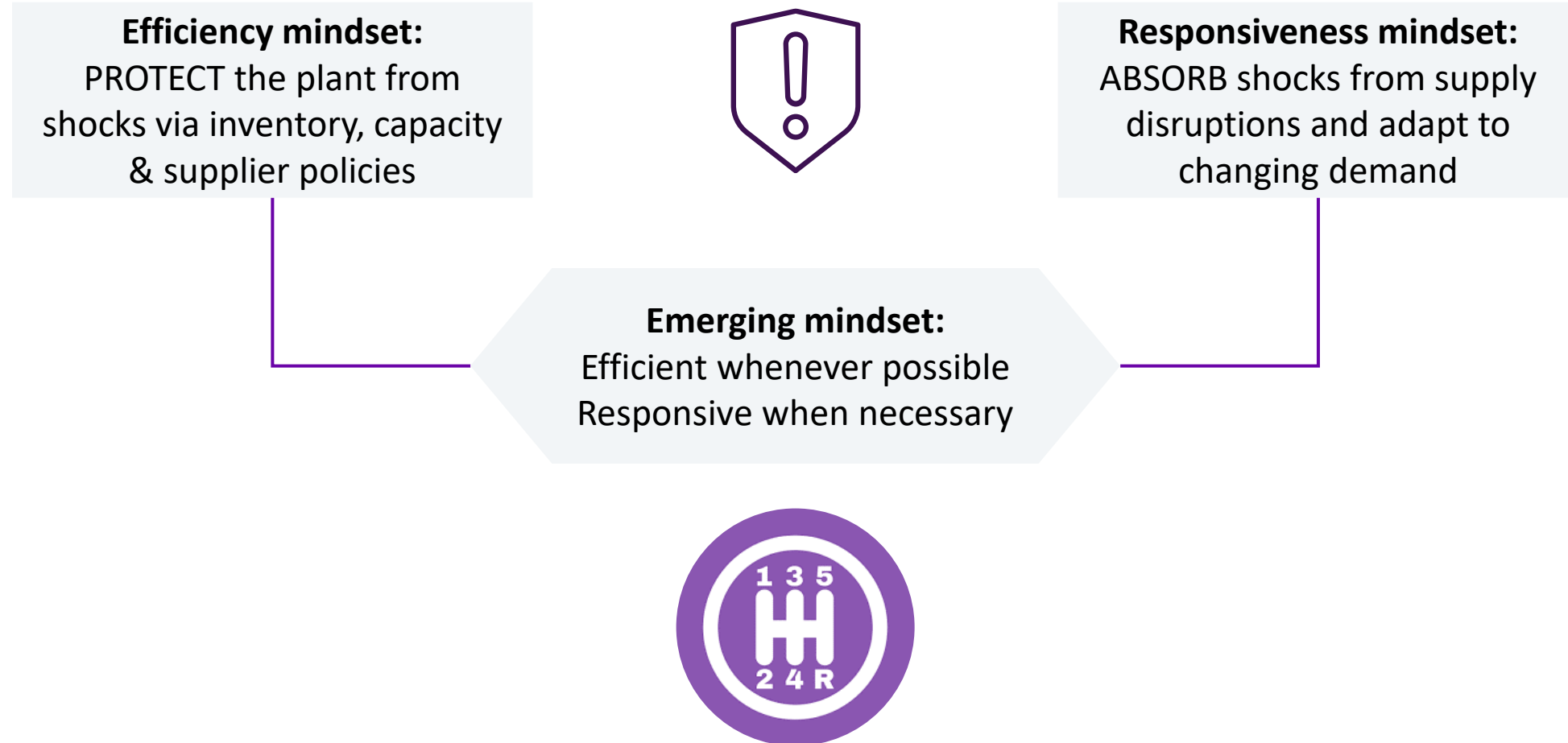
- Aberdeen Group



What is agility?

Quickly make decisions
balancing efficiency and
responsiveness

Definition: What agility means at the plant level



In the future,
efficient planning and scheduling will
be at the heart of every successful
manufacturing operation.

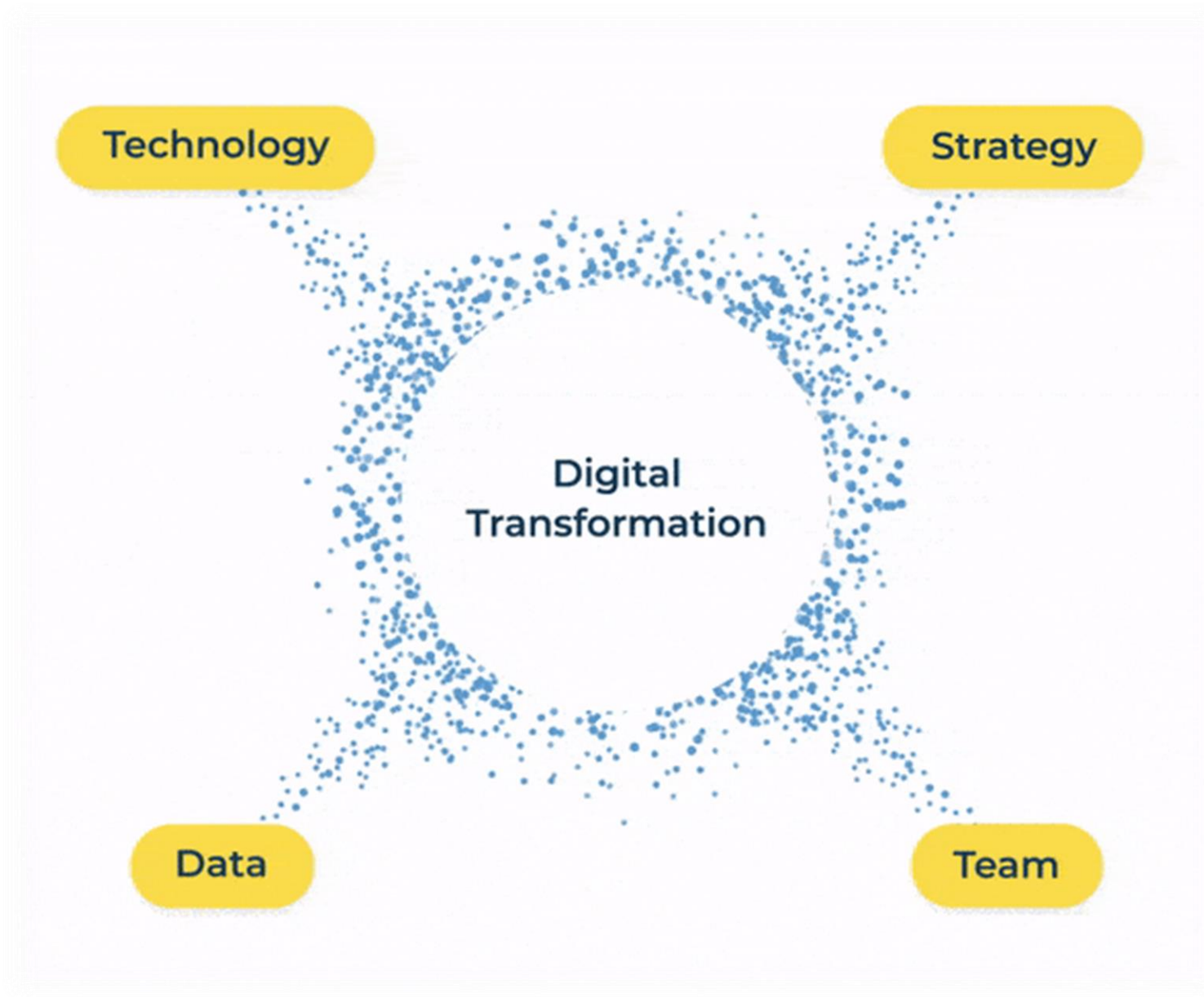
What is resilience?

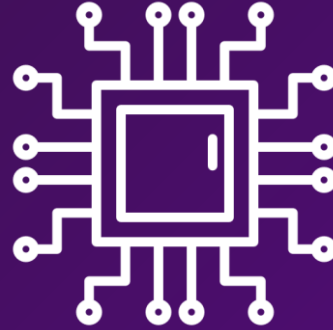
Being able to quickly react to factors outside of your plan.

Having buffers in your system.



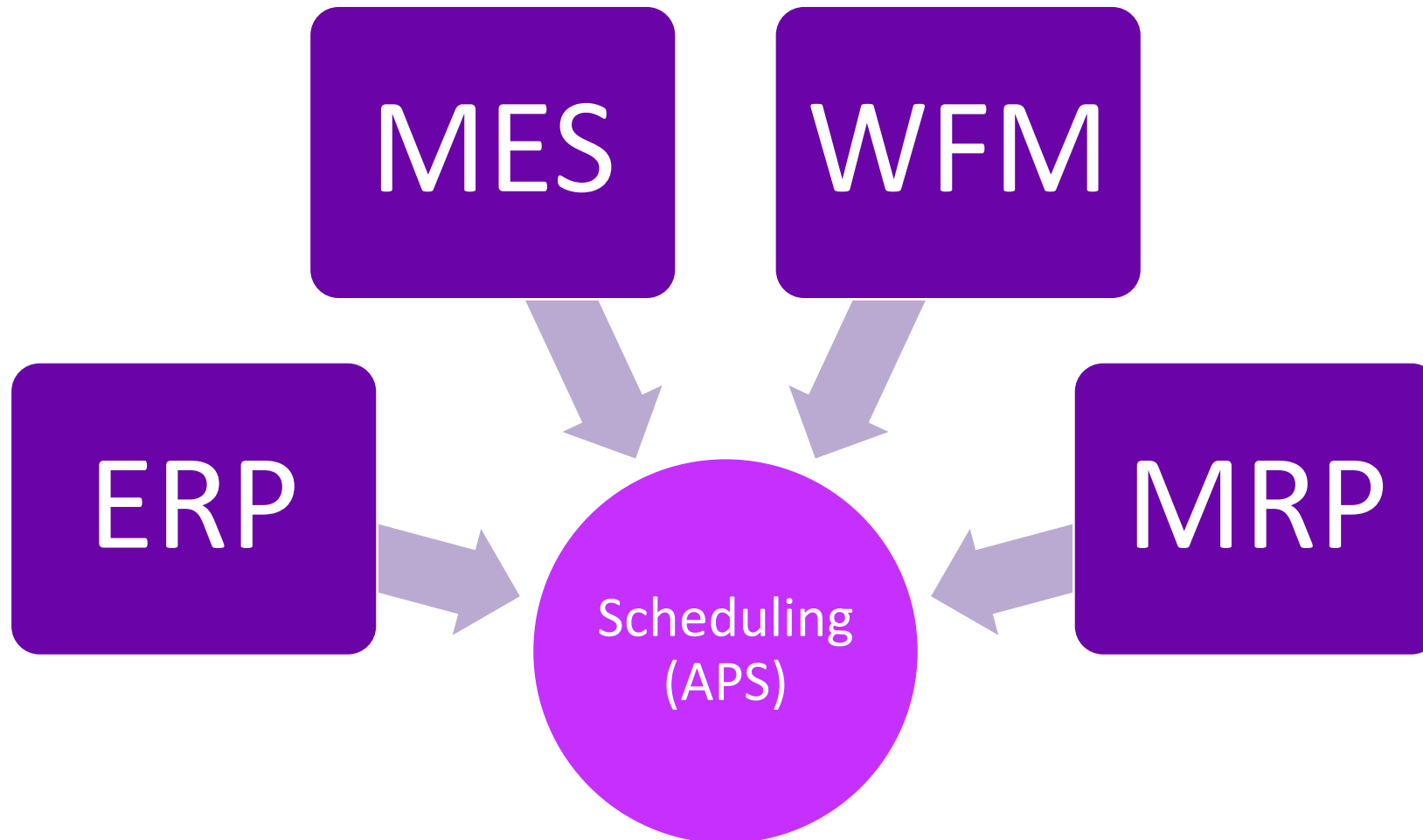
How?



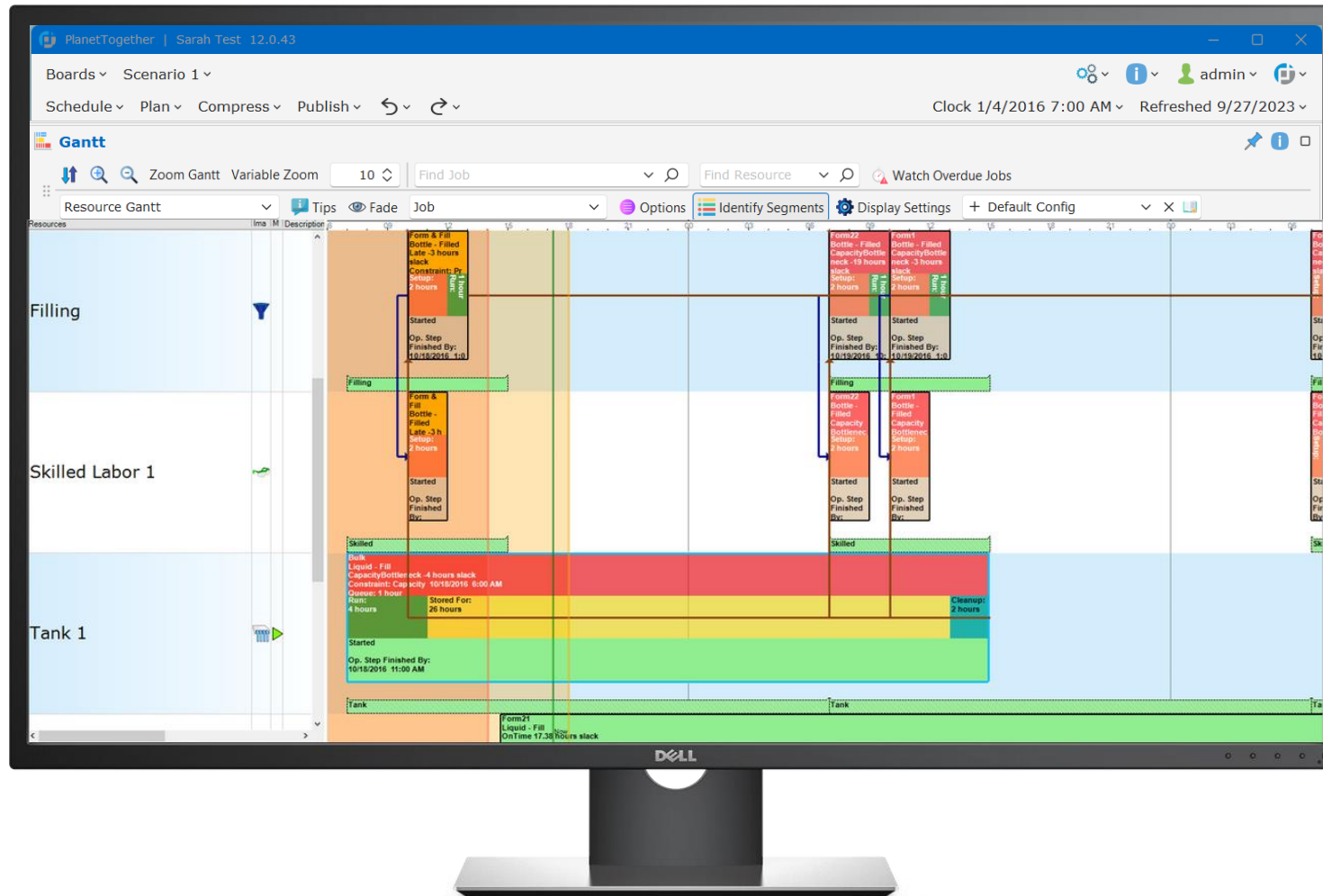


Enable integrations with your existing systems and provide a seamless data flow between systems.

Get Data from Critical Systems



Visualize Data to Make Decisions



Virtuous Cycle





Food and Beverage | USA

Illes seasonings and Flavors increase in sales by 20% over past 24 months

Challenge

- Products requiring multiple resources
- Product mix : allergens, religious dietary laws, FSMA
- Increased clerical workload in planning department
- Not enough time for proactive planning

Solution

- Deployed PlanetTogether

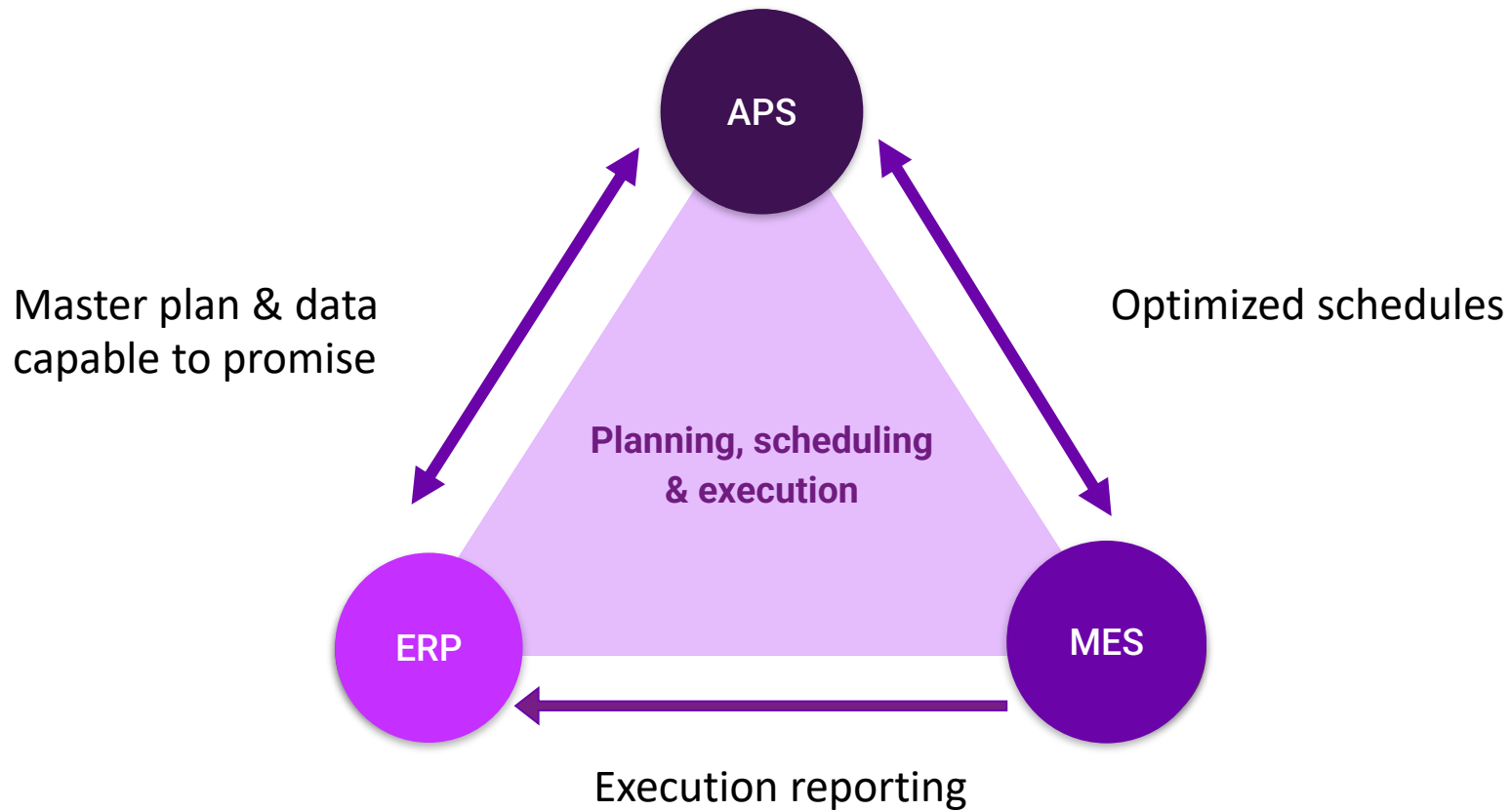
Results

- **Before, it took hours to schedule; now it takes seconds.**
- **Communication improved between planners and departments.**
- **Better response time for instances such as expedited production, order change, and capacity availability requests.**

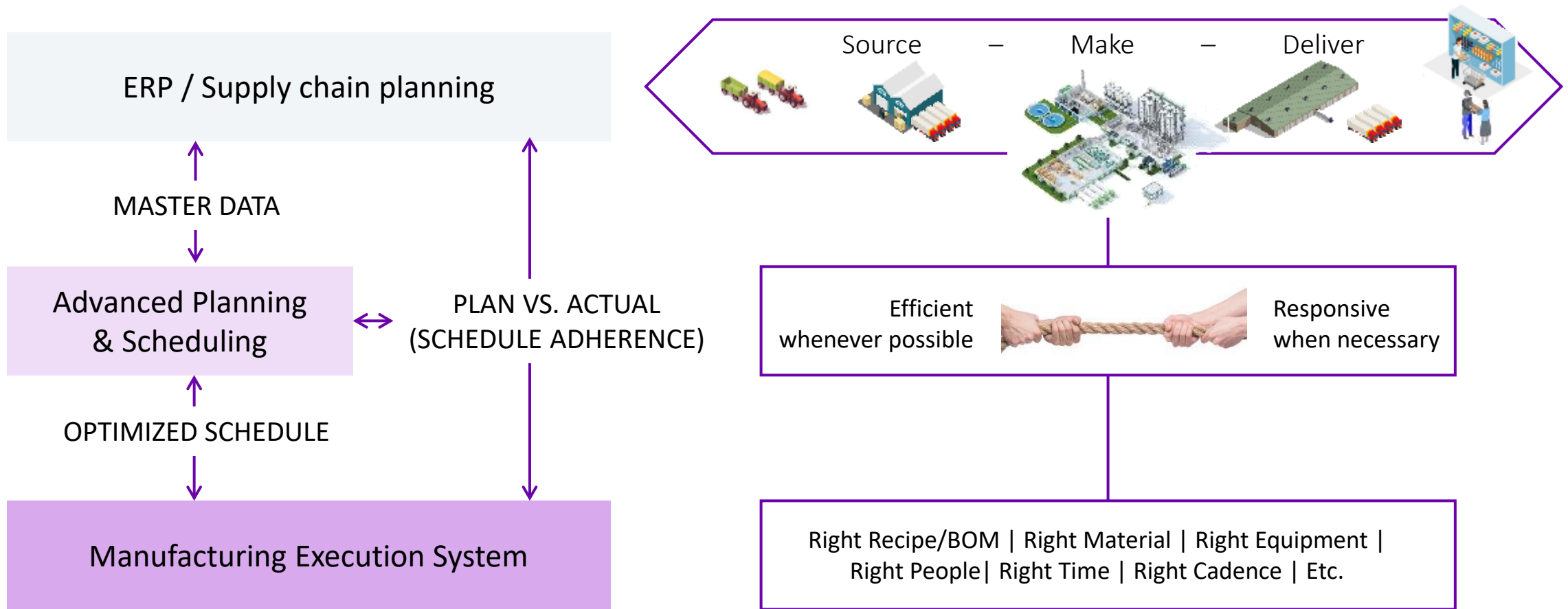


It all comes down to data

Enable integrations with your existing systems and provide a seamless data flow



AVEVA & PlanetTogether



Improve Agility & Resilience



Planner

Looking ahead





PlanetTogether R&D

2024 is the Year of Connecting

- Web Client for additional Personas
- Integration Wizard for easy import and data hygiene
- APIs for integrations with any system
- AI technology for optimizing schedules

This presentation may include predictions, estimates, intentions, beliefs and other statements that are or may be construed as being forward-looking. While these forward-looking statements represent our current judgment on what the future holds, they are subject to risks and uncertainties that could result in actual outcomes differing materially from those projected in these statements. No statement contained herein constitutes a commitment by AVEVA to perform any particular action or to deliver any particular product or product features. Readers are cautioned not to place undue reliance on these forward-looking statements, which reflect our opinions only as of the date of this presentation.

The Company shall not be obliged to disclose any revision to these forward-looking statements to reflect events or circumstances occurring after the date on which they are made or to reflect the occurrence of future events.

 [linkedin.com/company/aveva](https://www.linkedin.com/company/aveva)

 [@avevagroup](https://twitter.com/avevagroup)

ABOUT AVEVA

AVEVA is a world leader in industrial software, providing engineering and operational solutions across multiple industries, including oil and gas, chemical, pharmaceutical, power and utilities, marine, renewables, and food and beverage. Our agnostic and open architecture helps organizations design, build, operate, maintain and optimize the complete lifecycle of complex industrial assets, from production plants and offshore platforms to manufactured consumer goods.

Over 20,000 enterprises in over 100 countries rely on AVEVA to help them deliver life's essentials: safe and reliable energy, food, medicines, infrastructure and more. By connecting people with trusted information and AI-enriched insights, AVEVA enables teams to engineer efficiently and optimize operations, driving growth and sustainability.

Named as one of the world's most innovative companies, AVEVA supports customers with open solutions and the expertise of more than 6,400 employees, 5,000 partners and 5,700 certified developers. The company is headquartered in Cambridge, UK.

Learn more at www.aveva.com