

OCTOBER 25, 2023

---

# UTE's experience with the AVEVA™ PI System™

UTE monitors high voltage transmission assets with the AVEVA PI System in Uruguay

Ing. Ezequiel Frontini, UTE TRASMISIÓN





---

# Ing. Ezequiel Frontini

## Exploitation Technical Management Analyst

- UTE TRASMISIÓN
- edfrontini@ute.com.uy

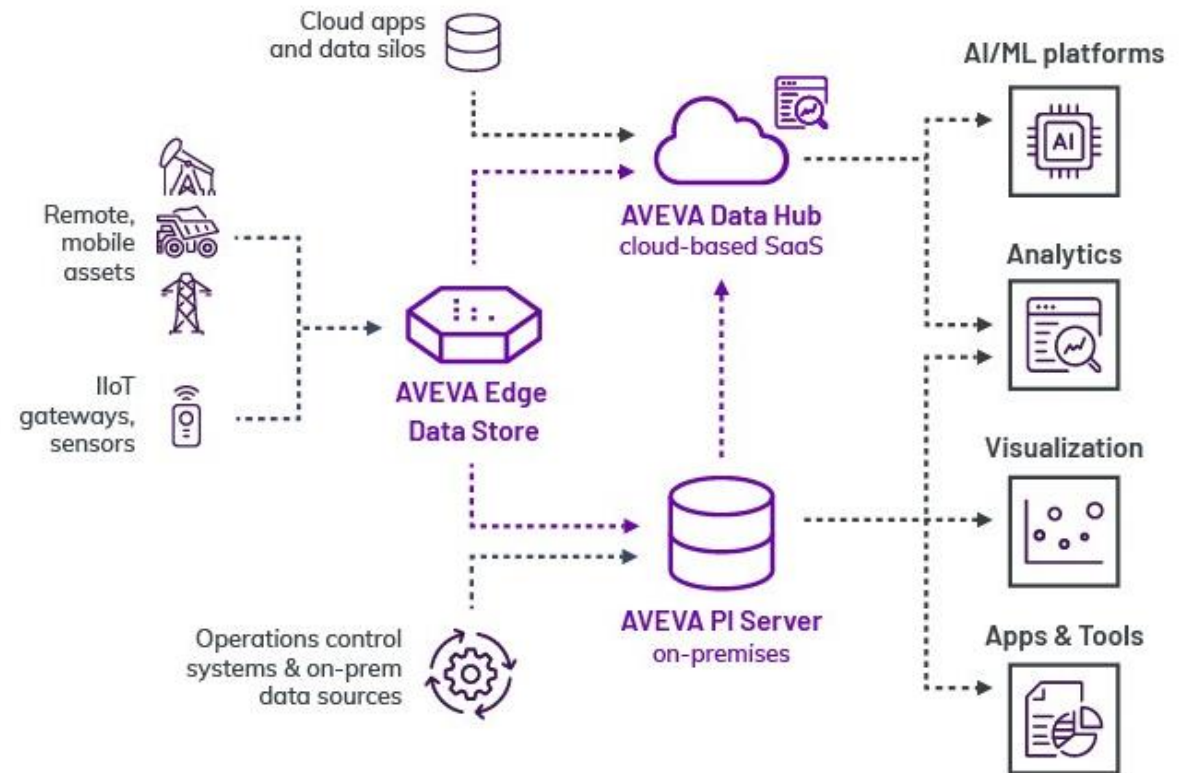
AVEVA PI System™

AVEVA PI Vision™

AVEVA PI System™

AVEVA PI Vision™

## Data management solution





URUGUAY →

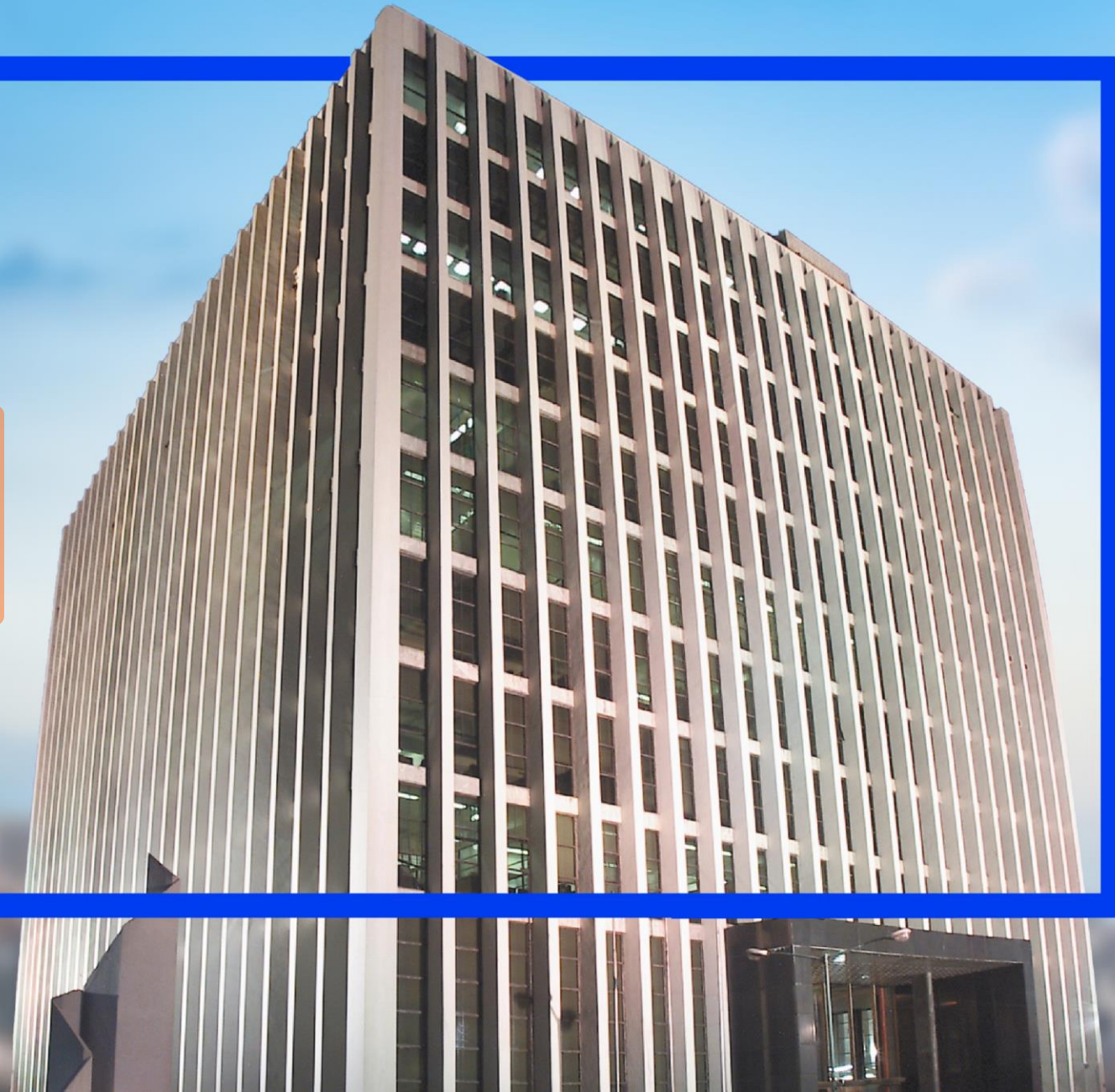


AVEVA





National Administration  
of Power Plants and  
Electrical Transmission





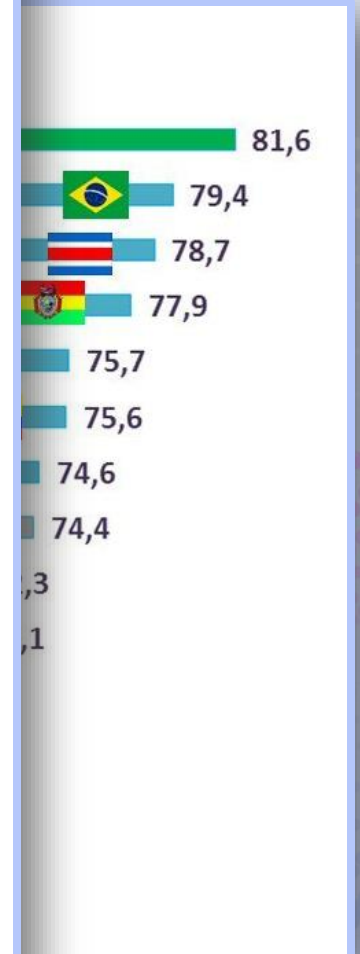
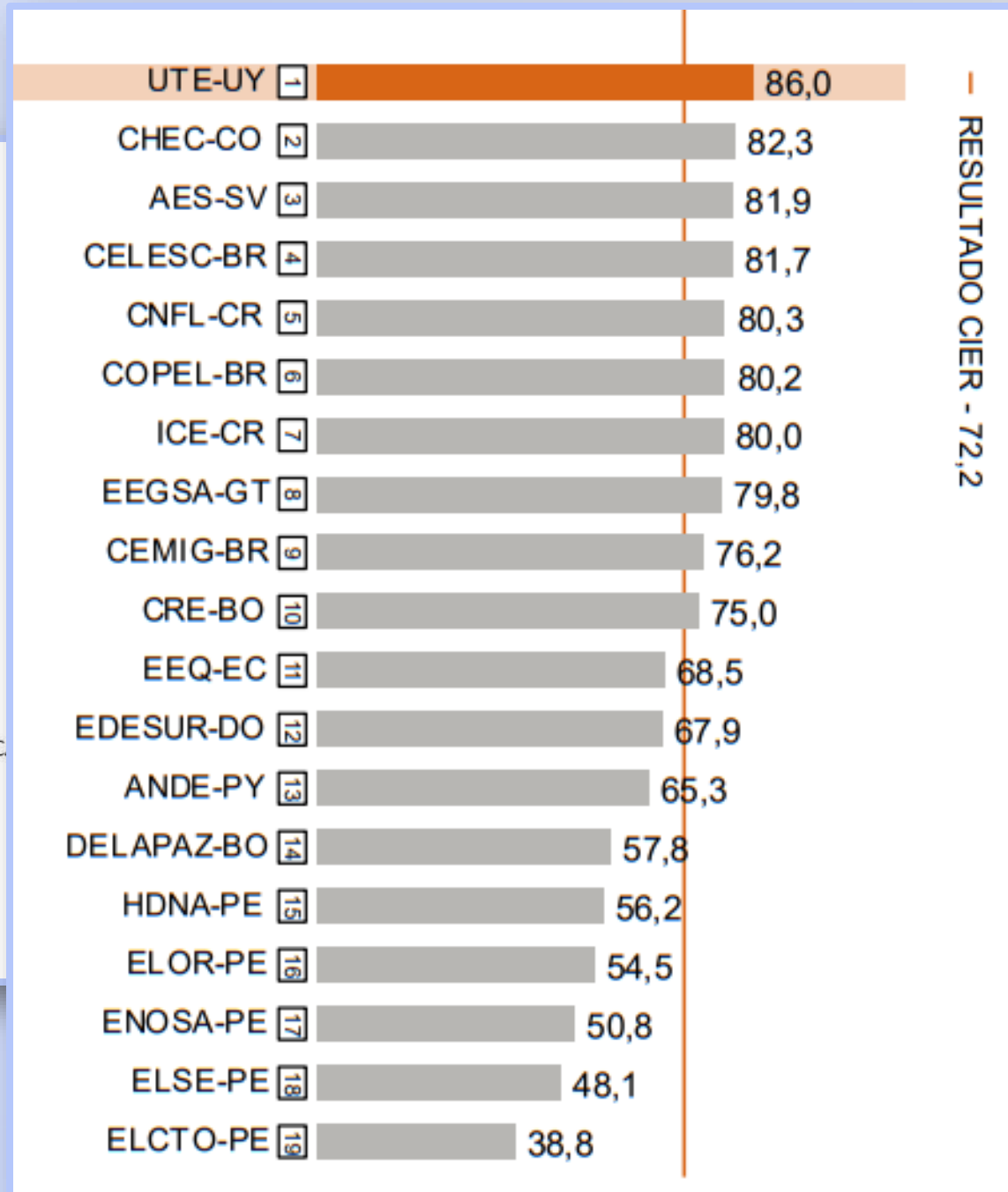
## Leader in LATAM

Consumer satisfaction  
& perceived quality

Survey conducted by CIER

CIER: Regional Energy Integration Commission  
ESCR: Residential Consumer Satisfaction Survey  
ISCAL: Satisfaction Index with Perceived Quality

© 2023 AVEVA Group plc and its subsidiaries. All rights reserved.



AVEVA



# Transition to renewable energy

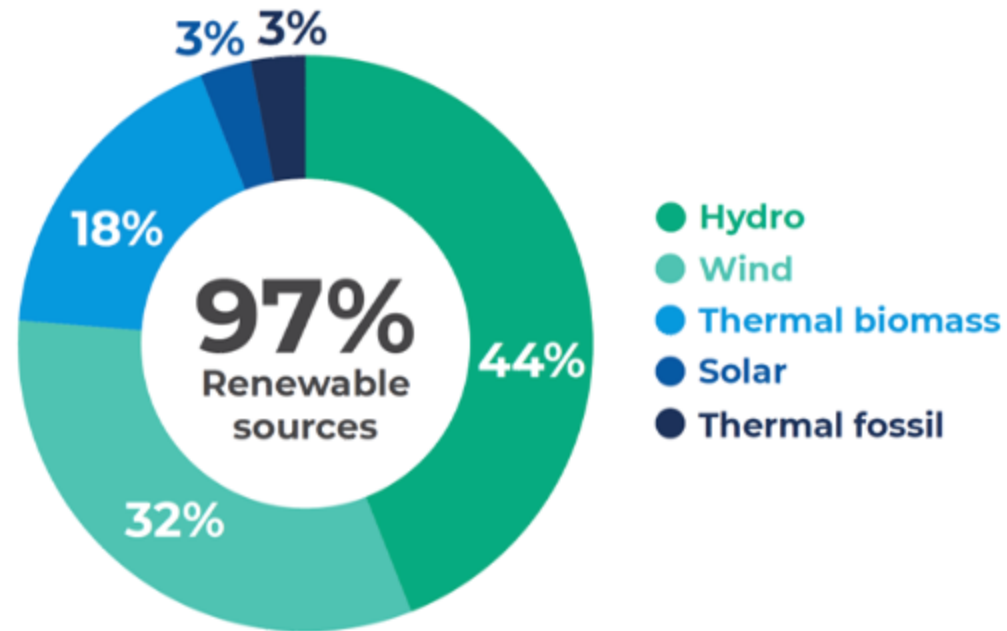
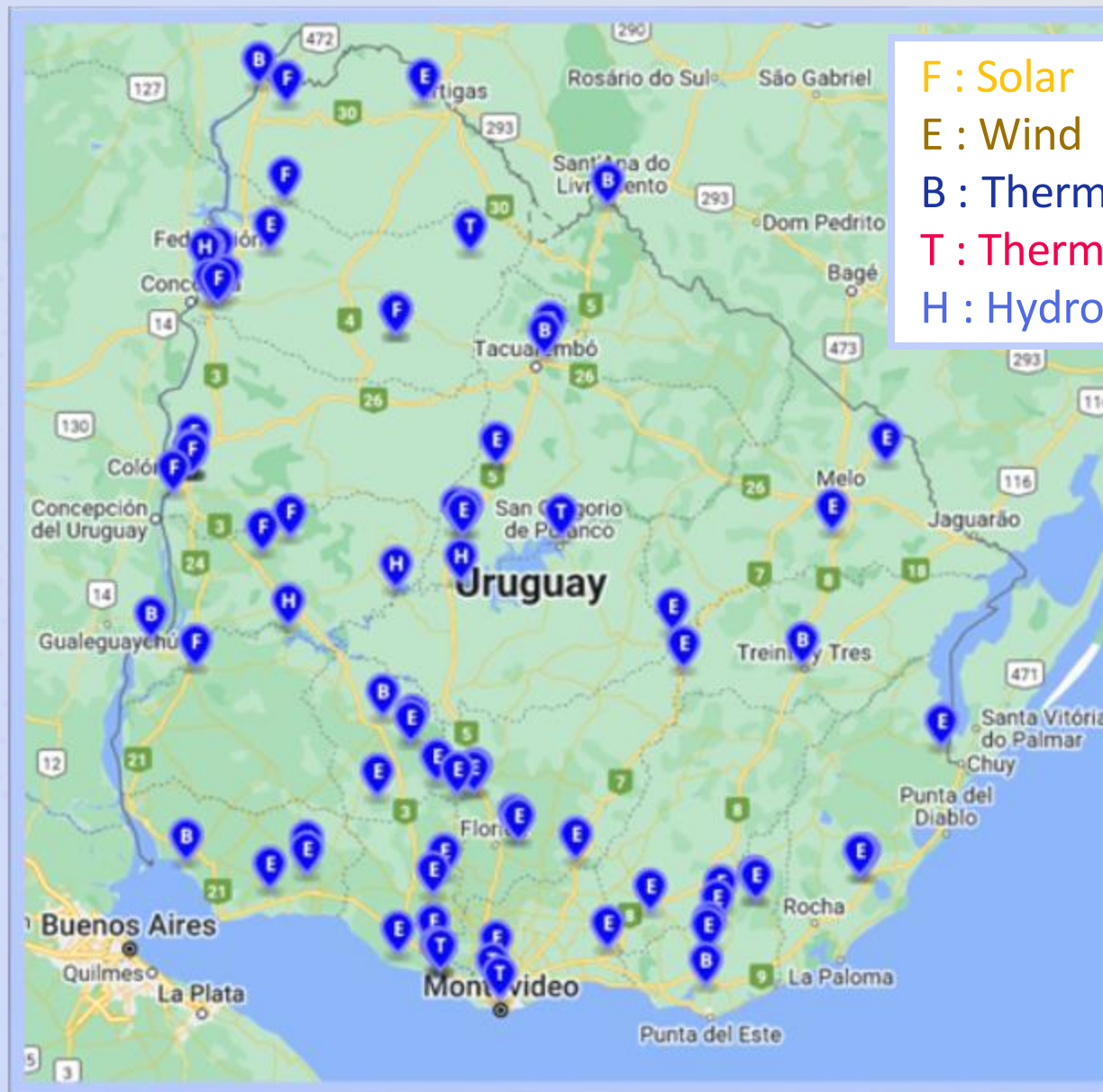
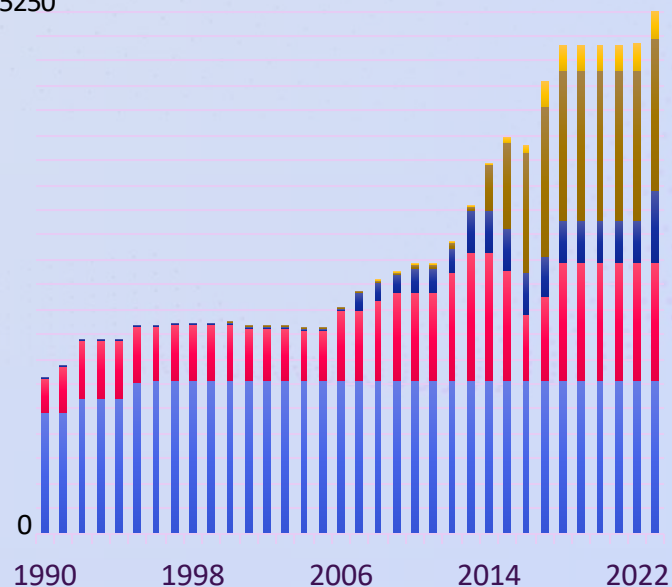


Figure 2: Electric power generation in Uruguay - Average for the years 2017 to 2020..

Source: MTEM ([ben.mtem.gub.uy](http://ben.mtem.gub.uy)).



5250



H : Hydro



# UTE - Trasmision

## Western Regional Center

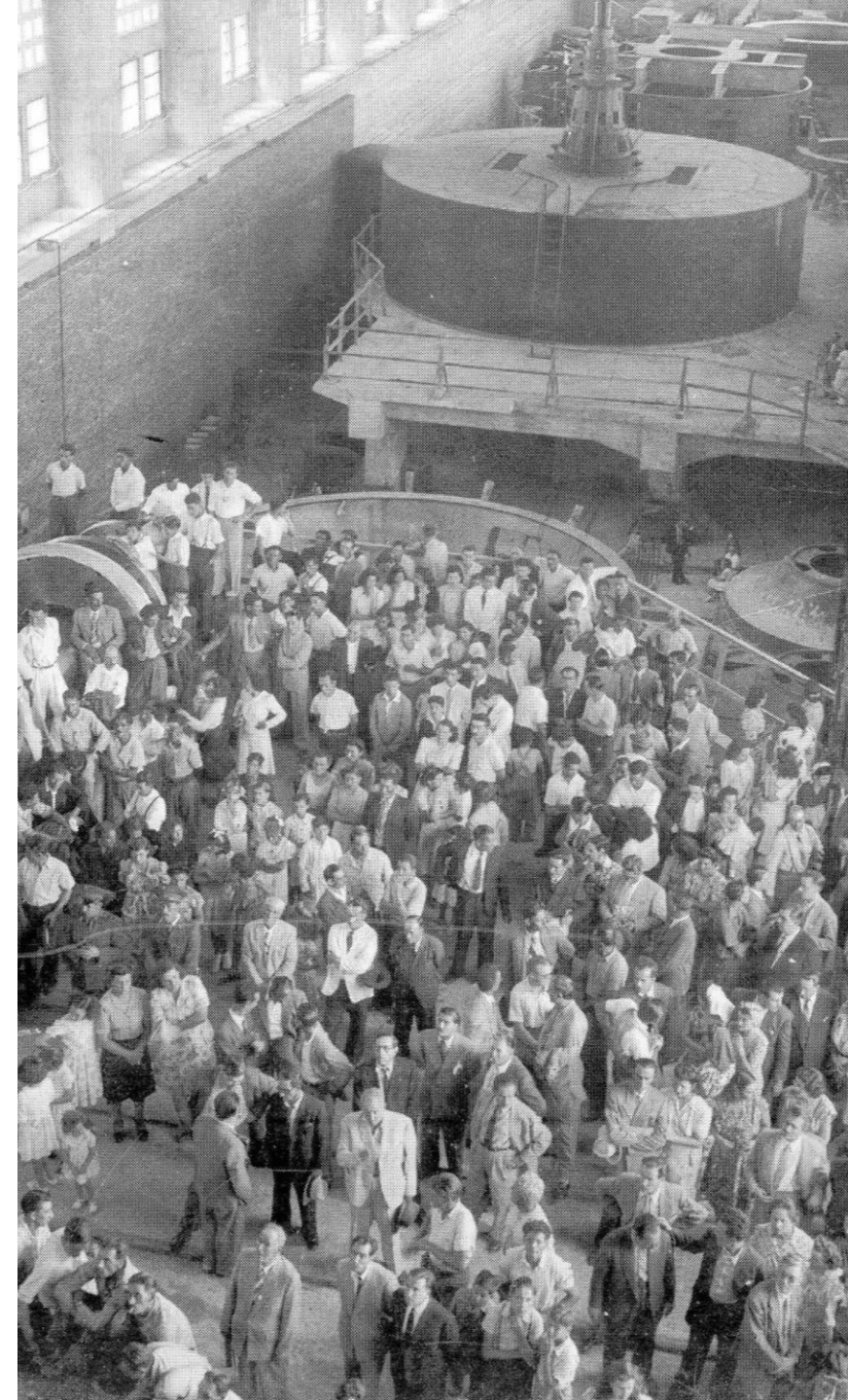
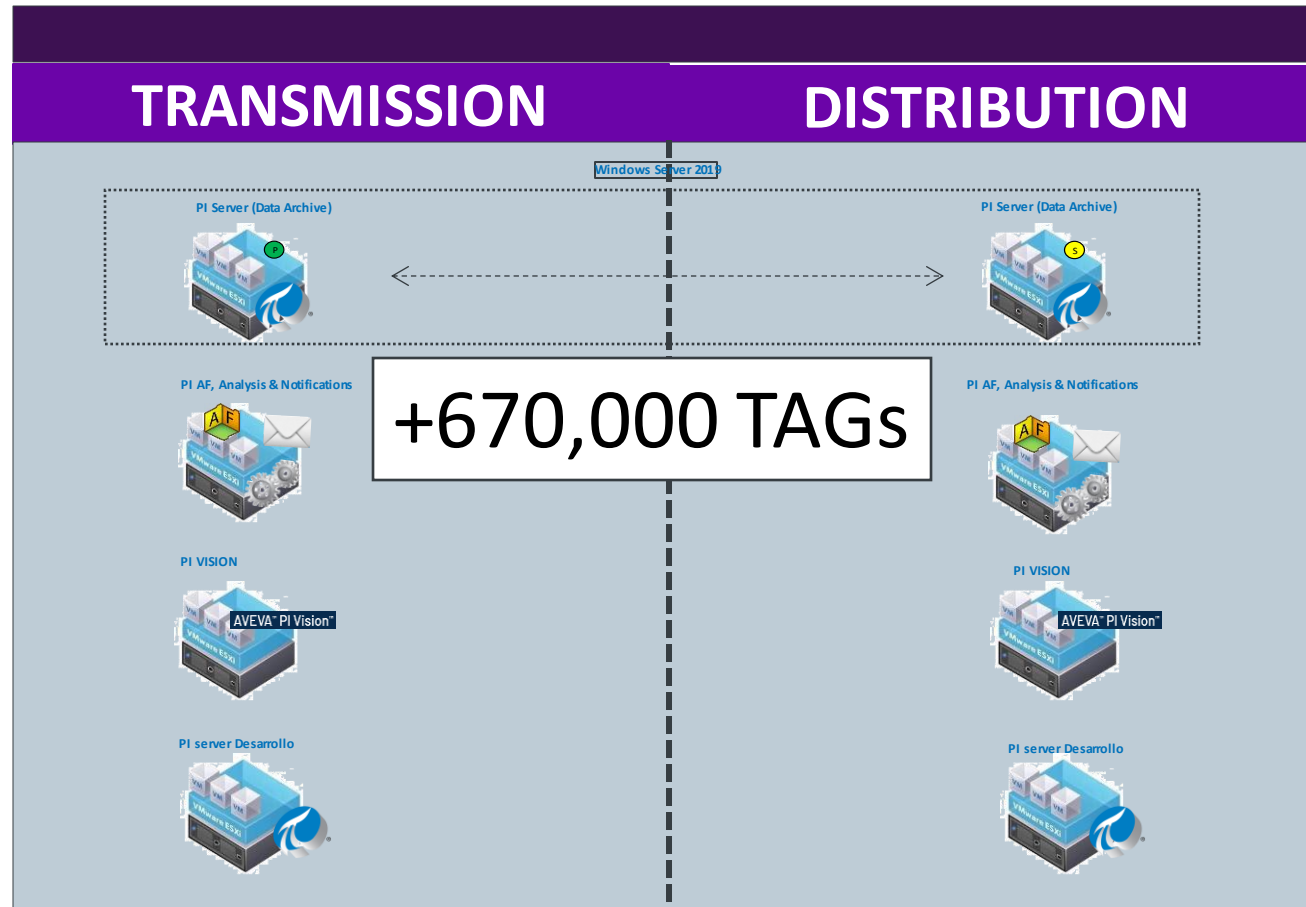
- Covers the Northwest of Uruguay
- Serves public and private generation
  - 500,000 population involved
  - Up to 500 km by national route
  - 1,270 km Power lines installed
  - 31 High voltage transformers



AVEVA



# PI Collective Architecture



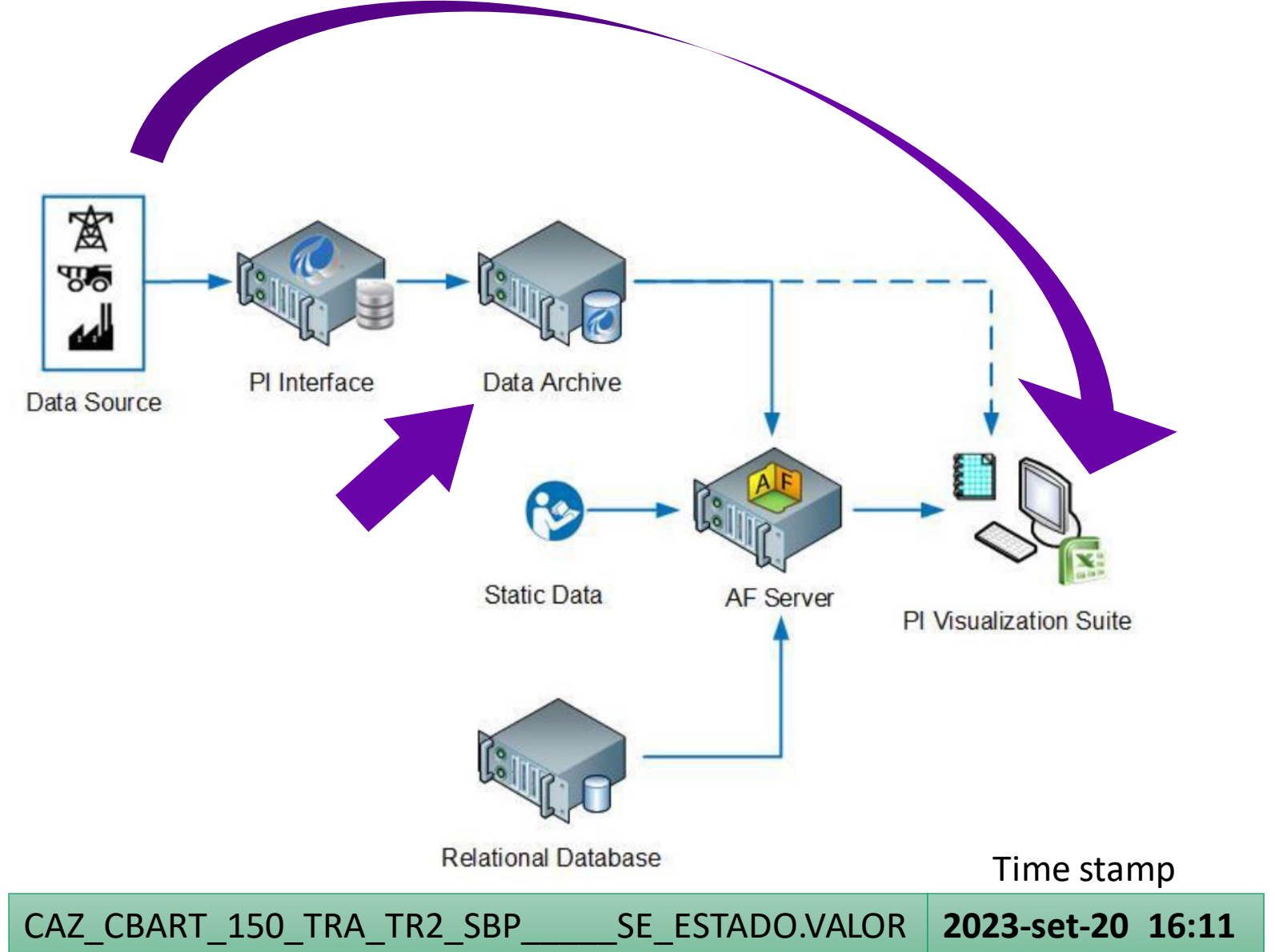


# TAG

Is a unique storage point for time series data in the PI Server (Former Data Archive).

>>> A place to storage data to be consulted later <<<

Example:



# PI System in UTE Trasmision

How does it impact our work?

Before

Periodic maintenance  
was carried out  
without considering  
the equipment  
usage/condition

After

Data is crossed with  
PI System records to  
adjust maintenance  
based on the  
information on the  
equipment  
usage/condition



AVEVA

## Case of success

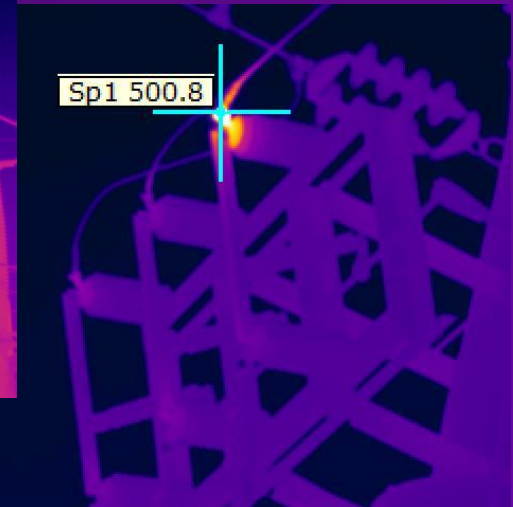
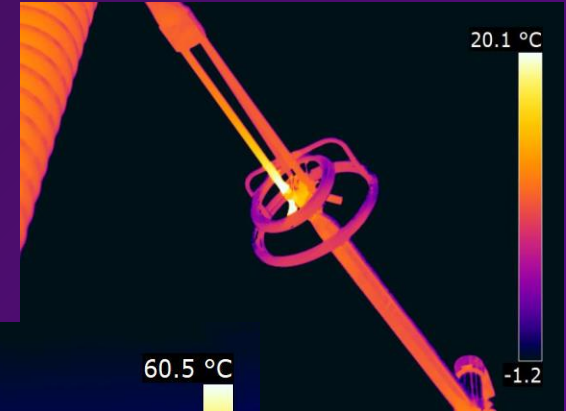
## High voltage electric disconnectors



**Goal:** Operate all disconnectors at least once every 2 years

**Scope:** More than 600 disconnectors

Potential issues

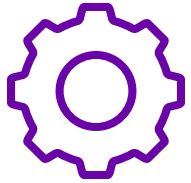


AVEVA



# Request:

*“Maintain all disconnectors at least once every two years”*  
*“Stay updated”*



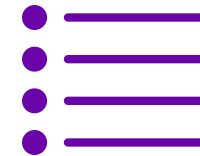
## Challenges

- Improve work procedures to facilitate response and optimize human resources
- High fidelity in the reports done
- Generate autonomy to obtain data



## Solution

- Develop an Excel document that consults PI data for all the disconnectors and returns a list with the date of the last movement of each one.



## Benefits

- Immediate results
- Real picture
- Plan customized to the need
- More time gained to address other challenges

# PI Solution

Zona	SE	kV	Ultimo Movimier	TAG	Descripción
Zona 1	ARA	30	2020-Nov-27 16:54	CAZ_CBARA_030_RA1_BBR_SBP_SE_ESTADO.VALOR	BARRA PRIN.   30
Zona 1	ARA	30	2020-Nov-27 16:54	CAZ_CBARA_030_RA1_BBR_SLN_SE_ESTADO.VALOR	LINEA   30 kV Ra
Zona 1	ARA	30	2020-Nov-27 16:51	CAZ_CBARA_030_RA1_BBR_SPT_SE_ESTADO.VALOR	TIERRA   30 kV Ra
Zona 1	ARA	30	2021-Jun-21 15:20	CAZ_CBARA_030_RA1_CNS_SBP_SE_ESTADO.VALOR	BARRA PRIN.   30
Zona 1	ARA	30	2021-Jun-21 15:17	CAZ_CBARA_030_RA1_CNS_SLN_SE_ESTADO.VALOR	LINEA   30 kV Ra
Zona 1	ARA	30	2021-Jun-21 13:09	CAZ_CBARA_030_RA1_CNS_SPT_SE_ESTADO.VALOR	TIERRA   30 kV Ra
Zona 1	ARA	30	2021-Jun-15 09:08	CAZ_CBARA_030_RA1_DIS_SBP_SE_ESTADO.VALOR	BARRA PRIN.   30
Zona 1	ARA	30	2021-Jun-15 10:53	CAZ_CBARA_030_RA1_DIS_SLN_SE_ESTADO.VALOR	LINEA   30 kV Ra
Zona 1	ARA	30	2021-Mar-16 08:41	CAZ_CBARA_030_RA1_DIS_SPT_SE_ESTADO.VALOR	TIERRA   30 kV Radial Distribucion 1 Señales Puesta a Tierra   Arapey
Zona 1	ARA	30	2020-Nov-19 07:48	CAZ_CBARA_030_RA1_LAV_SBP_SE_ESTADO.VALOR	BARRA PRIN.   30 kV Radial Col - Lavalleja Señales Seccionador Barra Principal   Arapey
Zona 1	ARA	30	2020-Nov-19 07:49	CAZ_CBARA_030_RA1_LAV_SLN_SE_ESTADO.VALOR	LINEA   30 kV Radial Col - Lavalleja Señales Seccionador Linea   Arapey
Zona 1	ARA	30	2020-May-07 11:15	CAZ_CBARA_030_RA1_LAV_SPT_SE_ESTADO.VALOR	TIERRA   30 kV Radial Col - Lavalleja Señales Puesta a Tierra   Arapey
Zona 1	ARA	30	2021-Mar-18 08:17	CAZ_CBARA_030_TRA_TR1_SBP_SE_ESTADO.VALOR	BARRA PRIN.   30 kV Trafo 1 Señales Seccionador Barra Principal   Arapey
Zona 1	ARA	30	2021-Mar-18 08:18	CAZ_CBARA_030_TRA_TR1_SNE_SE_ESTADO.VALOR	NEUTRO   30 kV Trafo 1 Señales Seccionador de Neutro   Arapey
Zona 1	ARA	30	2021-Jun-15 12:33	CAZ_CBARA_030_TRA_TR2_SBP_SE_ESTADO.VALOR	BARRA PRIN.   30 kV Trafo 2 Señales Seccionador Barra Principal   Arapey
Zona 1	ARA	30	2021-Jun-15 12:37	CAZ_CBARA_030_TRA_TR2_SNE_SE_ESTADO.VALOR	NEUTRO   30 kV Trafo 2 Señales Seccionador de Neutro   Arapey
Zona 1	ARA	150	2021-May-24 15:39	CAZ_CBARA_150_ACO_AC1_SBA_SE_ESTADO.VALOR	BARRA AUX.   150 kV Acoplador 1 Señales Seccionador Barra Auxiliar   Arapey
Zona 1	ARA	150	2021-May-24 16:10	CAZ_CBARA_150_ACO_AC1_SBP_SE_ESTADO.VALOR	BARRA PRIN.   150 kV Acoplador 1 Señales Seccionador Barra Principal   Arapey
Zona 1	ARA	150	2020-Oct-06 15:29	CAZ_CBARA_150_LI1_CFL_SBA_SE_ESTADO.VALOR	BARRA AUX.   150 kV Línea 1 CFL Señales Seccionador Barra Auxiliar   Arapey
Zona 1	ARA	150	2020-Oct-07 09:36	CAZ_CBARA_150_LI1_CFL_SBP_SE_ESTADO.VALOR	BARRA PRIN.   150 kV Línea 1 CFL Señales Seccionador Barra Principal   Arapey
Zona 1	ARA	150	2020-Oct-07 09:36	CAZ_CBARA_150_LI1_CFL_SLN_SE_ESTADO.VALOR	LINEA   150 kV Línea 1 CFL Señales Seccionador Linea   Arapey
Zona 1	ARA	150	2020-Oct-07 09:43	CAZ_CBARA_150_LI1_CFL_SPT_SE_ESTADO.VALOR	TIERRA   150 kV Línea 1 CFL Señales Puesta a Tierra   Arapey
Zona 1	ARA	150	2018-Oct-25 18:05	CAZ_CBARA_150_LI1_TGO_SBA_SE_ESTADO.VALOR	BARRA AUX.   150 kV Línea 1 Tomas Gomensoro Señales Seccionador Barra Auxiliar   Arapey
Zona 1	ARA	150	2020-set-15 07:46	CAZ_CBARA_150_LI1_TGO_SBP_SE_ESTADO.VALOR	BARRA PRIN.   150 kV Línea 1 Tomas Gomensoro Señales Seccionador Barra Principal   Arapey
Zona 1	ARA	150	2020-set-15 07:46	CAZ_CBARA_150_LI1_TGO_SLN_SE_ESTADO.VALOR	LINEA   150 kV Línea 1 Tomas Gomensoro Señales Seccionador Linea   Arapey
Zona 1	ARA	150	2020-set-15 14:28	CAZ_CBARA_150_LI1_TGO_SPT_SE_ESTADO.VALOR	TIERRA   150 kV Línea 1 Tomas Gomensoro Señales Puesta a Tierra   Arapey
Zona 1	ARA	150	2021-Mar-18 08:15	CAZ_CBARA_150_TRA_TR1_SBP_SE_ESTADO.VALOR	BARRA PRIN.   150 kV Trafo 1 Señales Seccionador Barra Principal   Arapey
Zona 1	ARA	150	2019-Abr-08 15:21	CAZ_CBARA_150_TRA_TR1_SBY_SE_ESTADO.VALOR	TRANSFERENCIA   150 kV Trafo 1 Señales Transferencia   Arapey
Zona 1	ARA	150	2021-Mar-18 08:15	CAZ_CBARA_150_TRA_TR1_STR_SE_ESTADO.VALOR	TRAFO   150 kV Trafo 1 Señales Seccionador Trafo   Arapey
Zona 1	ARA	150	2021-Jun-09 16:24	CAZ_CBARA_150_TRA_TR2_SBA_SE_ESTADO.VALOR	BARRA AUX.   150 kV Trafo 2 Señales Seccionador Barra Auxiliar   Arapey
Zona 1	ARA	150	2021-Jun-15 12:31	CAZ_CBARA_150_TRA_TR2_SBP_SE_ESTADO.VALOR	BARRA PRIN.   150 kV Trafo 2 Señales Seccionador Barra Principal   Arapey

382

Less than 1 year

68

Between 1 and 2 years

65

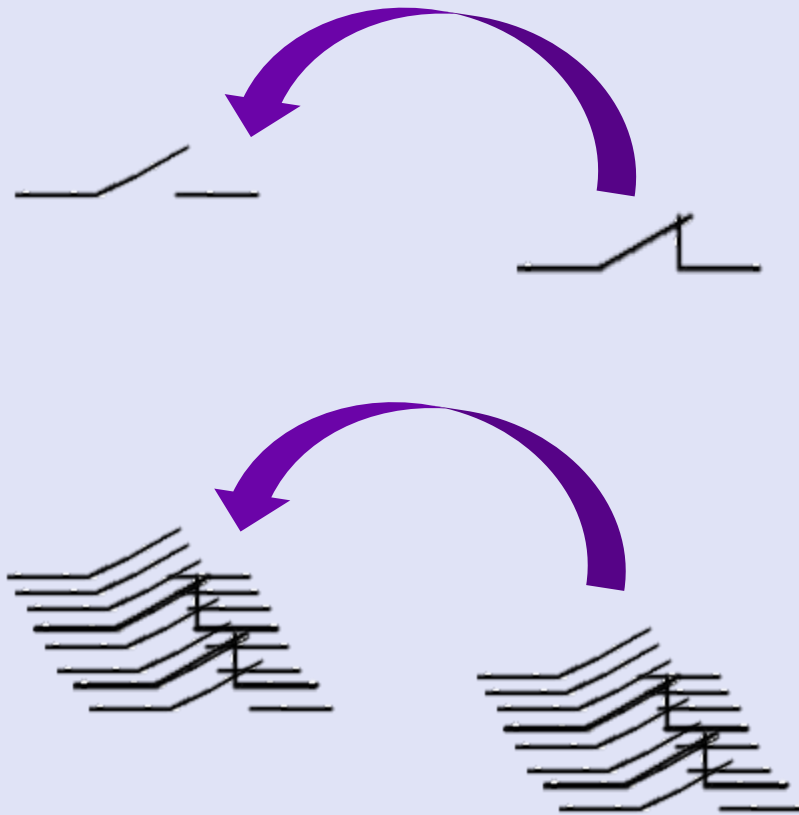
More than 2 years

110

Border

## HOW DID I DO IT?

# Excel + Filters



Archivo Inicio Insertar Diseño de página Fórmulas Datos Revisar Vista Desarrollador PI DataLink PI Builder ¿Qué desea hacer?

Current Value Single Value Archive Value Multiple Value Compressed Data Sampled Data Timed Data Calculated Data Time Filtered Calculation Explore Compare Search Asset Filter Properties Update Settings Feedback

I19

1	A	B	C	D
	TAGs	Filtro	07/09/2023	Estado anterior
62	CAZ_CBART_150_LI1_RIV_SBP___SE_ESTADO.VALOR	)<> "DSD"	13/Mar/2023 14:22	Abierto

Compressed Data

- ☐ Time range
- ☐ Number of values

Root path (optional)

Data item(s)

Start time

Number of values

☒ Backwards in time

Filter expression (optional)

☐ Mark as filtered

Boundary type

Output cell

☐ Hide count

☒ Show time stamps

☐ Show value attributes

☐ Show annotations

☐ Column

☐ Row

OK Apply

Informe\_Seccionadoras CronMPsCRO

Listo



# Impact on the analysis

Manually

Automated

1 week = 40 hours

1 hour

■ Before

■ After

+97.5%

AVEVA

# Other examples

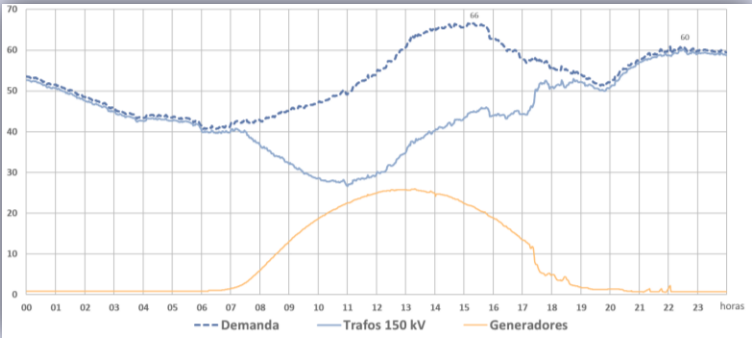
Temperature detection  
in Transformer



Analysis of unexpected  
breaker openings

Fecha	Radial x23			Radial Bola de oro			
	Corriente	Estado	I_Neutro	Estado	I_R	I_S	I_T
27-Ago-20 18:56:00	160,7	Cerrado	0,35	Cerrado	87,4	55,9	56,2
27-Ago-20 18:57:00	161,1	Cerrado	0,35	Cerrado	89,9	56,0	56,3
27-Ago-20 18:58:00	161,4	Cerrado	0,35	Cerrado	92,5	56,1	56,4
27-Ago-20 18:59:00	161,8	Cerrado	0,35	Cerrado	95,1	56,2	56,4
27-Ago-20 19:00:00	162,1	Cerrado	0,35	Cerrado	97,7	56,3	56,5
27-Ago-20 19:01:00	161,9	Cerrado	0,35	Cerrado	100,3	56,3	56,6
27-Ago-20 19:02:00	161,5	Cerrado	0,35	Cerrado	102,8	56,4	56,7
27-Ago-20 19:03:00	161,1	Cerrado	0,35	Cerrado	105,4	56,5	56,8
27-Ago-20 19:04:00	160,6	Cerrado	0,35	Cerrado	108,0	56,6	56,8
27-Ago-20 19:05:00	160,5	Cerrado	0,35	Cerrado	110,6	56,6	56,9
27-Ago-20 19:06:00	160,7	Cerrado	0,35	Cerrado	113,2	56,7	57,0
27-Ago-20 19:07:00	160,8	Cerrado	0,35	Cerrado	115,7	56,8	57,1
27-Ago-20 19:08:00	161,0	Cerrado	0,35	Cerrado	118,3	56,9	57,2
27-Ago-20 19:09:00	161,1	Cerrado	15,27	Cerrado	120,9	56,2	56,1
27-Ago-20 19:10:00	161,3	Cerrado	46,98	Cerrado	123,5	51,9	51,8
27-Ago-20 19:11:00	64,4	Cerrado	78,69	Cerrado	126,1	47,5	47,6
27-Ago-20 19:12:00	1,6	Abierto	0,08	Abierto	3,9	3,7	4,0
27-Ago-20 19:13:00	-0,4	Abierto	0,08	Abierto	8,3	8,0	8,7
27-Ago-20 19:14:00	-0,4	Abierto	0,08	Abierto	12,7	12,3	13,5
27-Ago-20 19:15:00	-0,4	Abierto	0,08	Abierto	17,2	16,5	18,2
27-Ago-20 19:16:00	-0,4	Abierto	0,08	Abierto	21,6	20,8	22,9
27-Ago-20 19:24:00	-0,4	Abierto	0,08	Cerrado	57,0	55,7	56,5

Studies Transformers  
and Lines load's



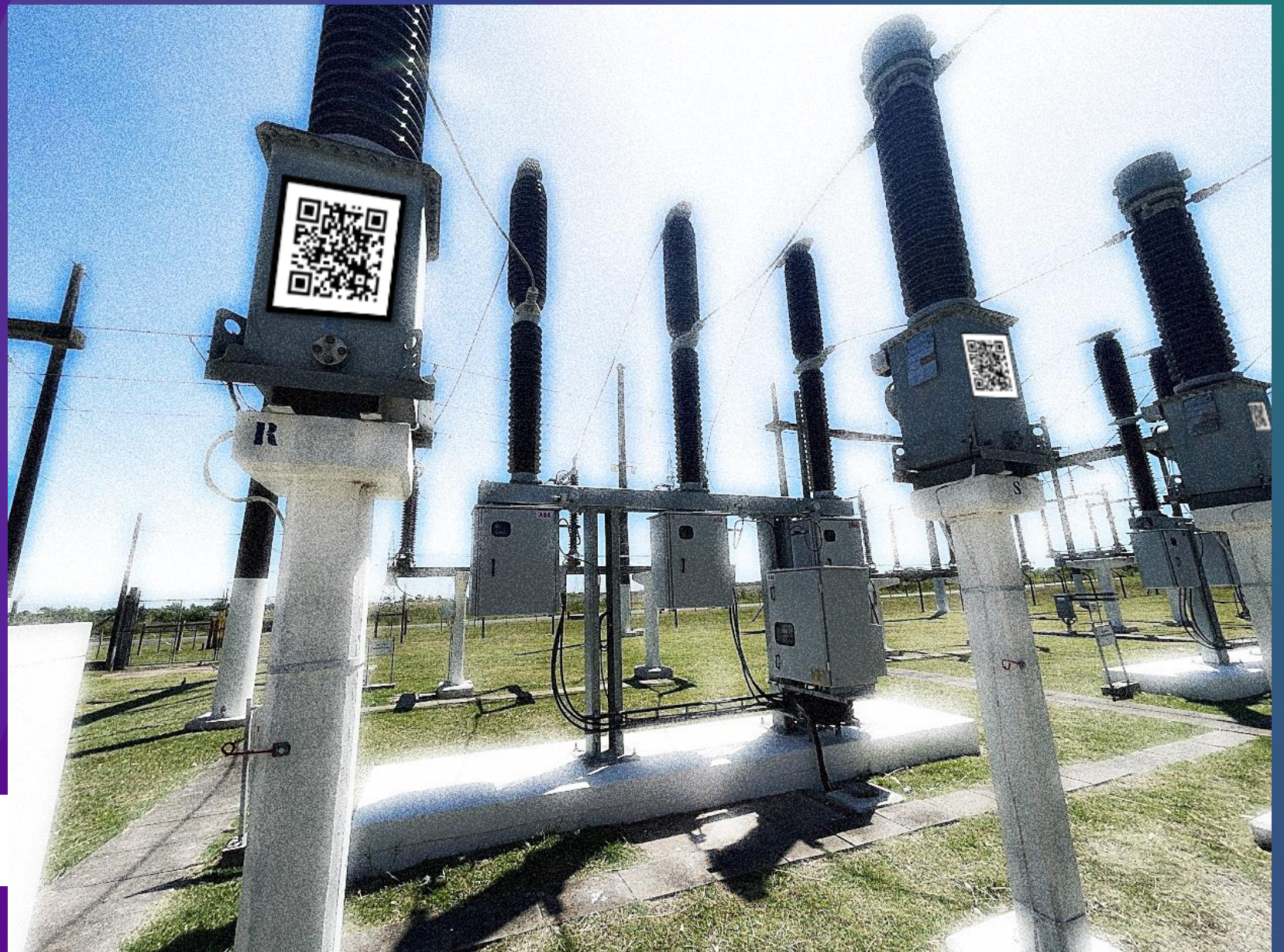


# KEEP GOING!

"IF YOU CAN DREAM IT,  
YOU CAN DO IT"

WALT DISNEY CORP.

Our dream today:



# AVEVA



# *Next steps...*

Generate SCADA PI Vision

Ensure access to links

Place QRs signages

Available  
**EARLY NEXT YEAR**

**AVEVA**

ute

AVEVA

DEMO



# Questions?

Please wait for the microphone.  
State your name and company.



# Please remember to...

Navigate to this session in the mobile app to complete the survey.



# Thank you!



This presentation may include predictions, estimates, intentions, beliefs and other statements that are or may be construed as being forward-looking. While these forward-looking statements represent our current judgment on what the future holds, they are subject to risks and uncertainties that could result in actual outcomes differing materially from those projected in these statements. No statement contained herein constitutes a commitment by AVEVA to perform any particular action or to deliver any particular product or product features. Readers are cautioned not to place undue reliance on these forward-looking statements, which reflect our opinions only as of the date of this presentation.

The Company shall not be obliged to disclose any revision to these forward-looking statements to reflect events or circumstances occurring after the date on which they are made or to reflect the occurrence of future events.

 [linkedin.com/company/aveva](https://www.linkedin.com/company/aveva)

 [@avevagroup](https://twitter.com/avevagroup)

#### ABOUT AVEVA

AVEVA is a world leader in industrial software, providing engineering and operational solutions across multiple industries, including oil and gas, chemical, pharmaceutical, power and utilities, marine, renewables, and food and beverage. Our agnostic and open architecture helps organizations design, build, operate, maintain and optimize the complete lifecycle of complex industrial assets, from production plants and offshore platforms to manufactured consumer goods.

Over 20,000 enterprises in over 100 countries rely on AVEVA to help them deliver life's essentials: safe and reliable energy, food, medicines, infrastructure and more. By connecting people with trusted information and AI-enriched insights, AVEVA enables teams to engineer efficiently and optimize operations, driving growth and sustainability.

Named as one of the world's most innovative companies, AVEVA supports customers with open solutions and the expertise of more than 6,400 employees, 5,000 partners and 5,700 certified developers. The company is headquartered in Cambridge, UK.

Learn more at [www.aveva.com](https://www.aveva.com)