

# Digital Transformation: Predictive Analytics @ City of Salem



Devin Doring, Technical Services Supervisor, @ City of Salem  
Gary Wong, Principal, Global Water Industry @ OSIsoft



# AGENDA

- Digital Transformation
- City of Salem's Story
- Q&A

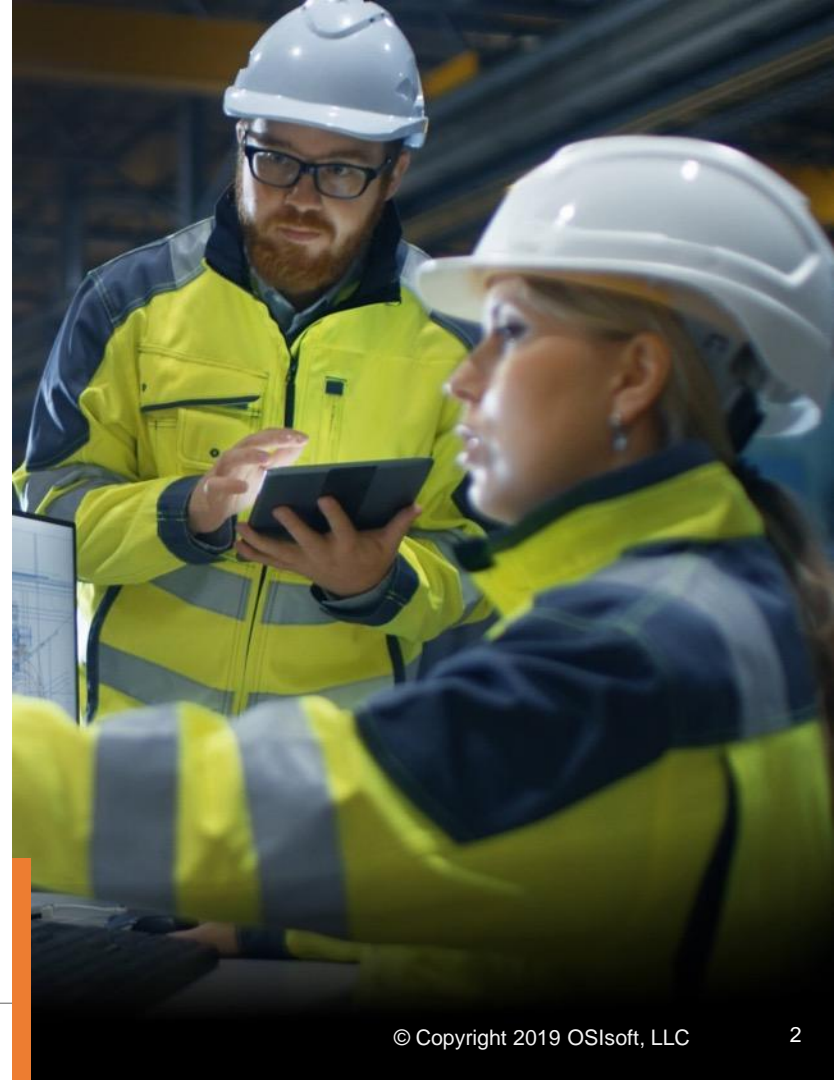


Figure 10. Real-Time Data

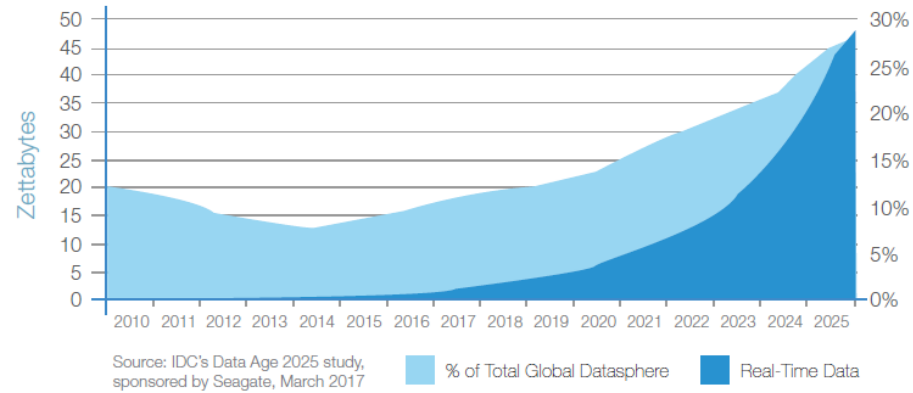
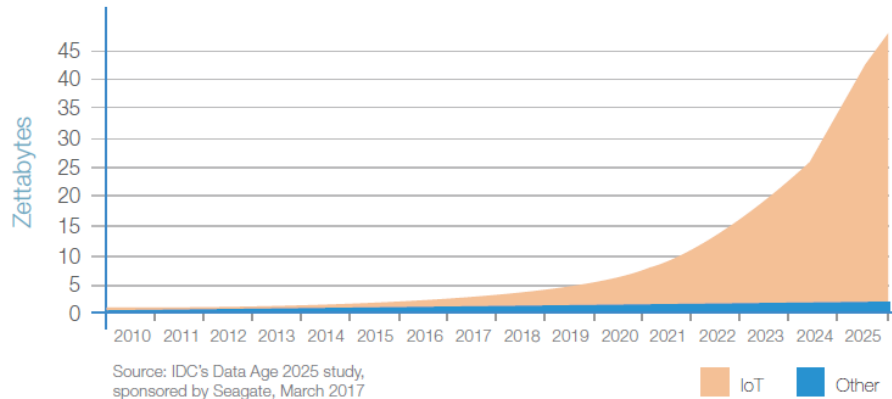


Figure 11. IoT Drives Real-Time Data



# Who is OSIsoft?

## A Pioneer for Digital Transformation

**39+**  
Years

**140+**  
Countries

**21,000**  
Sites

**2B**  
Data  
Streams

**24/25**  
of our first  
customers are  
still with us

Bahrain\*  
Beijing\*  
Calgary  
Cleveland  
Dubai

Frykdek-Mistek\*  
Frankfurt\*  
Houston  
Johnson City\*  
London\*

Madrid\*  
Mexico City\*  
Montreal\*  
Moscow\*  
Paris\*

Perth\*  
Philadelphia\*  
Phoenix  
**SAN LEANDRO\***  
Sao Paulo\*

Seoul\*  
Shanghai\*  
Singapore\*  
Sydney\*  
Tokyo\*

*\*Technical support available*

# OSIsoft Leads the Market in Critical Operations

Oil &  
Gas



Power &  
Utilities



Metals &  
Mining



Pharma &  
Life Science



Chemicals



Pulp &  
Paper



**80%**

of the top  
companies  
globally

**1000+**

utilities  
worldwide

**8**

of the global  
Fortune  
top 10  
companies

**24**

of the top 25  
pharmaceutical  
companies

**9**

of the top 10  
chemical  
companies  
rely on the  
PI System

**138.5M**

meters  
per year of  
production  
monitored



# Water

**150+ utilities** serving over  
**250 million customers**  
rely on the PI System



## United Utilities

Predicts water use 24 hours in advance with 98% accuracy [↗](#)



## Maynilad Water

Saved \$1.7million in pipeline repairs by pinpointing the source of a major leak [↗](#)



## City of Calgary

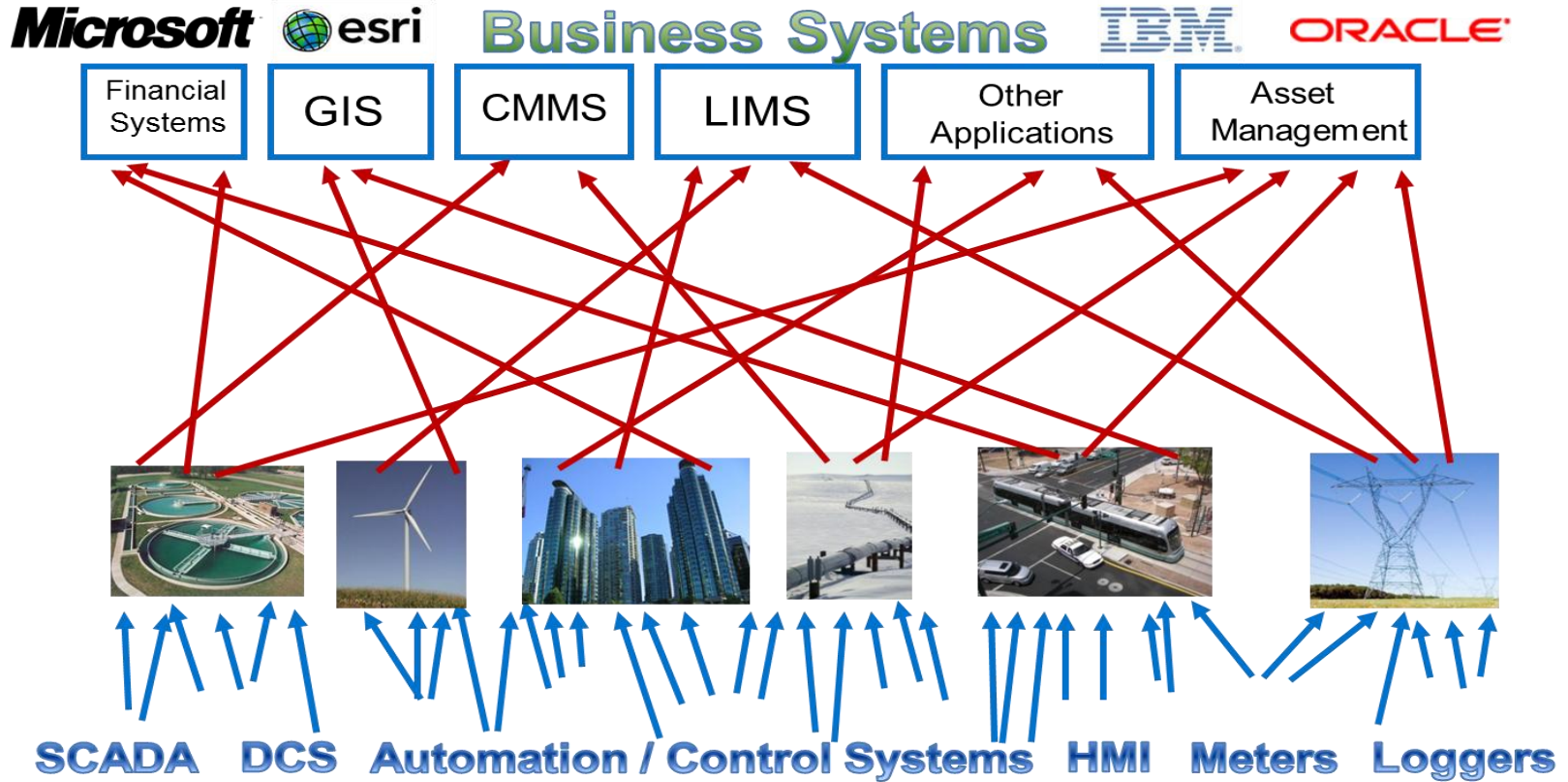
Manages water reservoirs to avoid catastrophic seasonal flooding [↗](#)



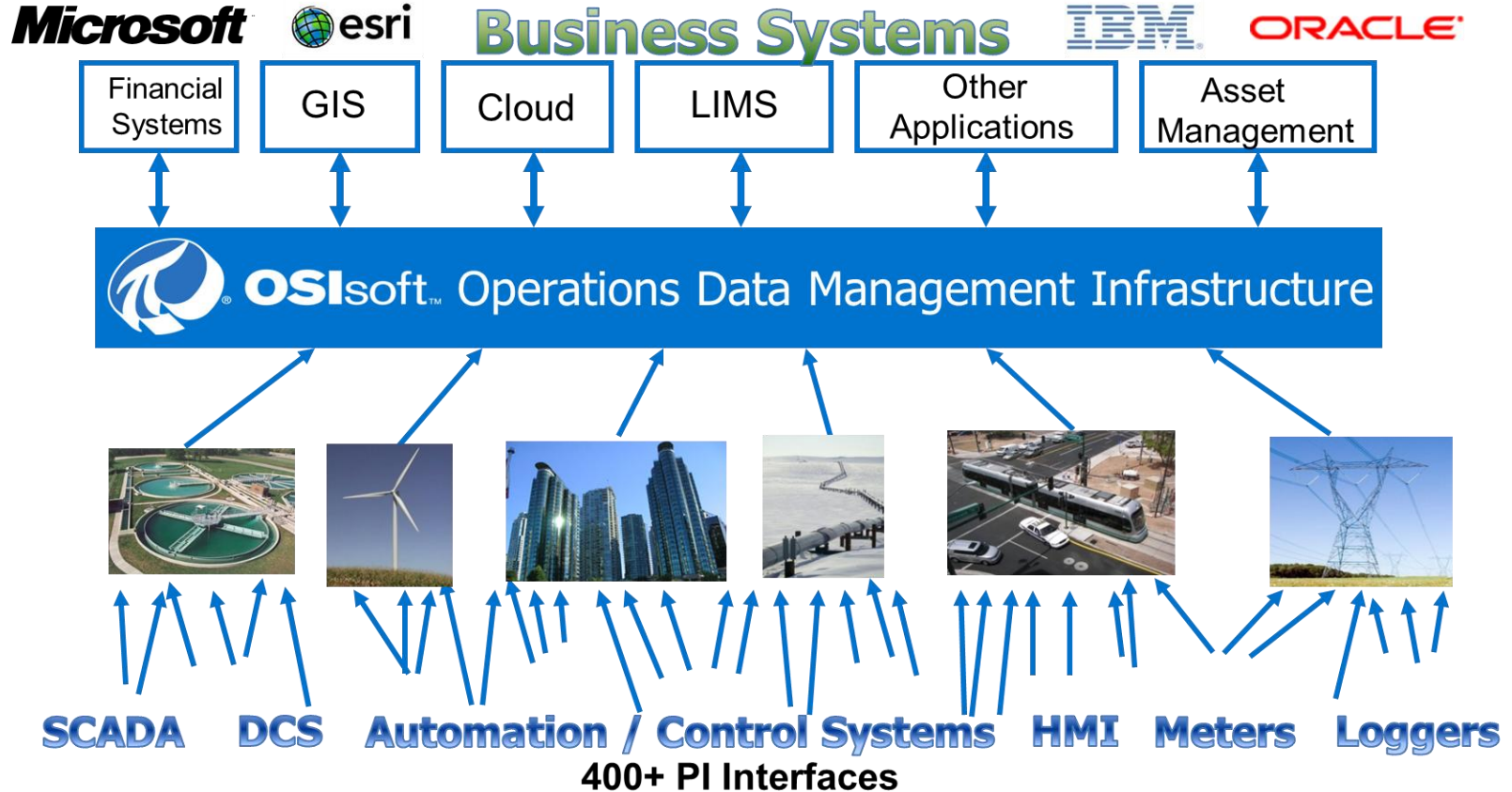
## Veolia

Improved leak detection 7% in a single year and reduced energy costs by 6% [↗](#)

# Data is an Opportunity, However Integration Nightmare



# A Data Infrastructure Strategy



# How Does the PI System Work?

## Collect

- Complete Connectivity [↗](#)

## Store

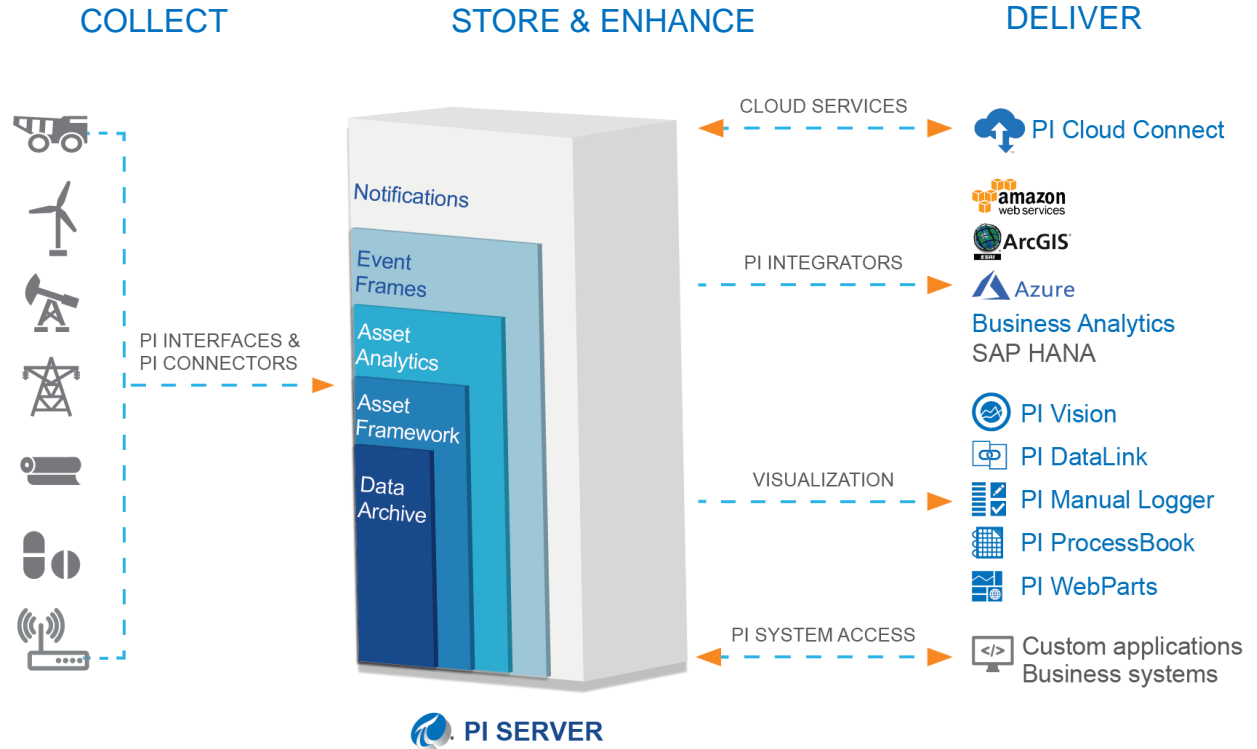
- High Fidelity Storage & Rapid Retrieval [↗](#)

## Enhance

- Data with Context [↗](#)
- Automated Notifications
- Events in Data Streams

## Deliver

- Self-Serve Visualization [↗](#)
- Integrations to Enterprise Systems [↗](#)



# Our Roadmap

## Extending your infrastructure from edge to cloud

### At the Edge

Collecting more data from more sources

#### Sensors



Millions of Smart Devices

#### Assets



Multiple Sensors

#### Plant



Multiple Assets

#### Enterprise



Multiple Plants

#### Community



Multiple Enterprises

### In the Cloud

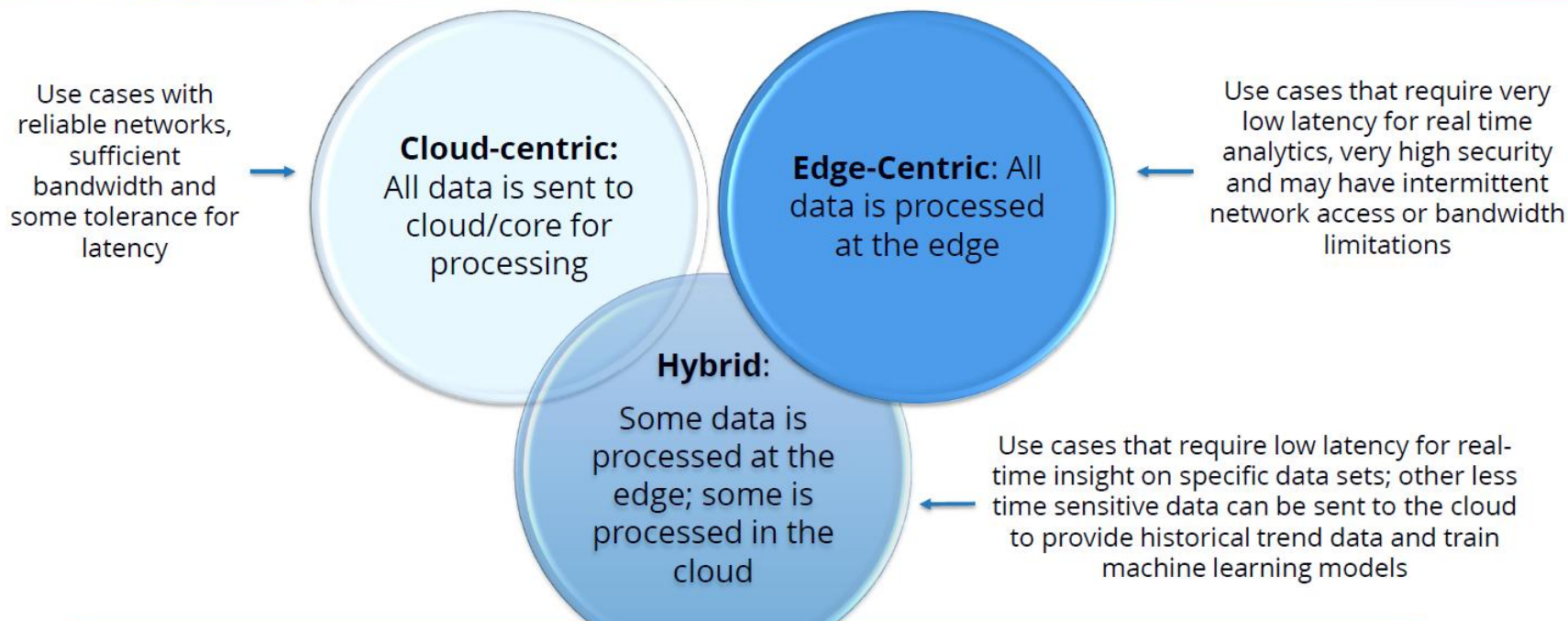
Enabling advanced analytics and new data-driven services

← Pervasive Data Collection (PDC) →

← OSIsoft Cloud Services →

← PI System →

# The Edge & IoT



**IDC believes the hybrid model becomes dominant over time.**

@CMacIoT  
@SmartGridPro

9



# Predictive Analytics of Harmful Algae Blooms

Devin Doring  
Technical Services Supervisor  
City of Salem Public Works



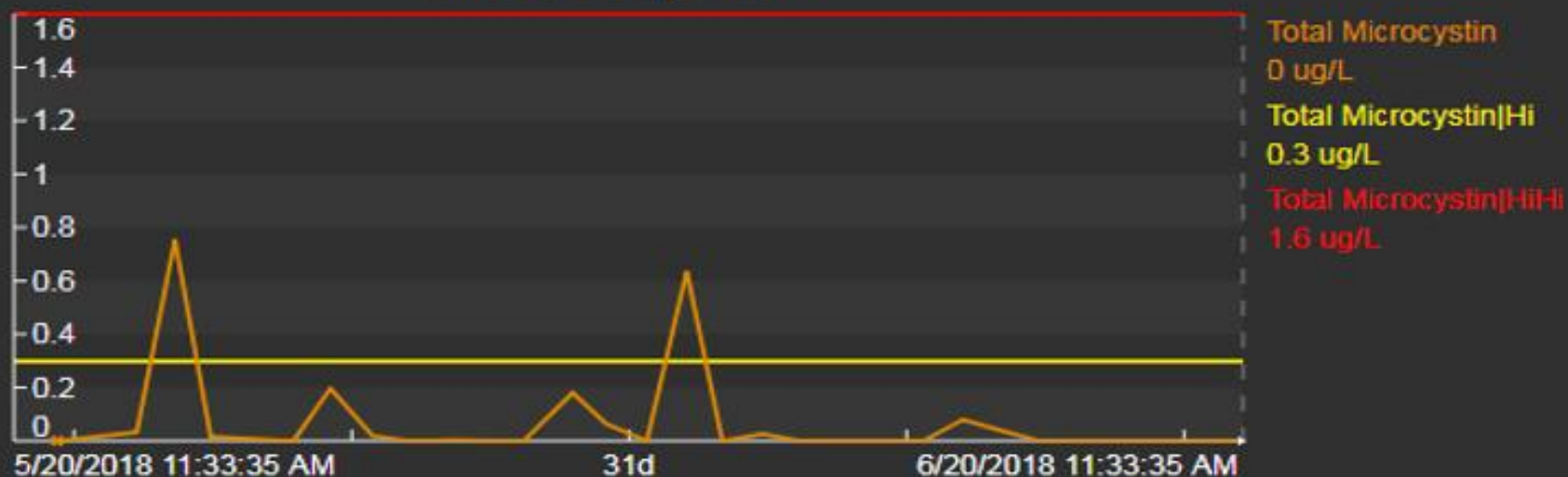




Harmful Algae Blooms (HABs)  
will become more frequent and  
abundant in the future.

# Aldersgate|Site Code

## Microcystin



8:29

Tuesday, May 29



EMERGENCY ALERTS

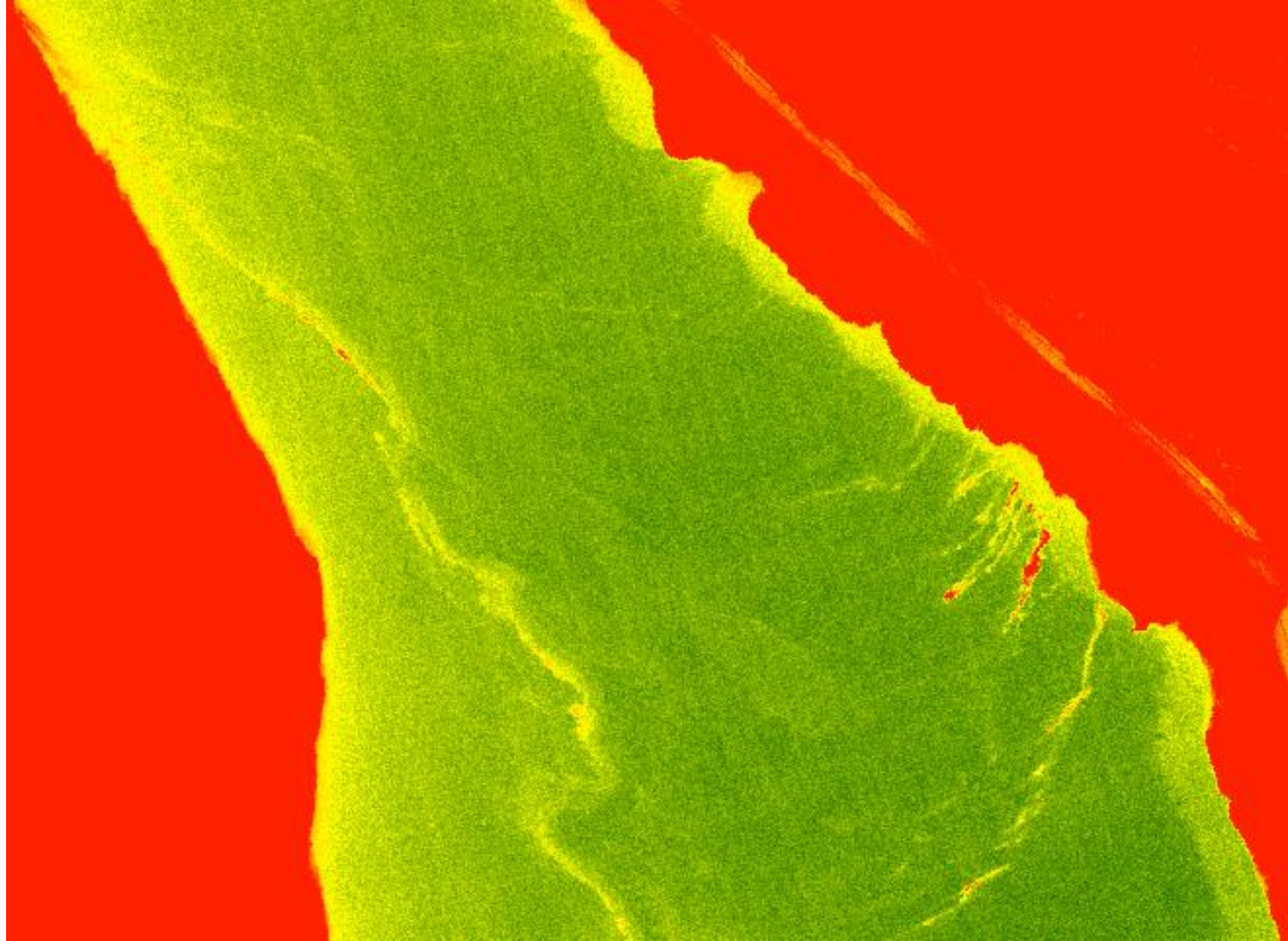
now

**Emergency Alert**

Civil Emergency in this area until 11:28PM PDT  
Prepare for Action OEM,1,OR







# Unregulated Contaminate Monitoring Rule – UCMR4

- Intent is to provide baseline occurrence data that the EPA can combine with toxicological research to make decisions about potential future drinking water regulations
- 10 out of 30 identified contaminants are cyanotoxins

Almost certainly Cyanotoxins will  
be a regulated contaminate in  
the future for water systems.

## Motivators for Prediction

- Traditional sampling and lab time take about 24 hours
- Lab kits are very expensive
- Ability to adjust treatment processes before toxins arrive
- Finally Feasible
- Root Cause Analysis
- Good Stewardship



# Detroit Lake Predictions

An initiative to care for our water source

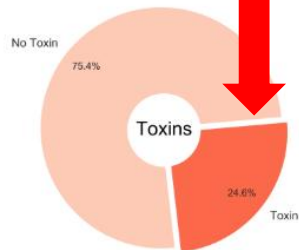
85% accurate

## Bloom Forecast July 1 - July 16

Our models suggest that blooms are still very likely at Detroit Lake, and that there remains a chance that toxins will occur.

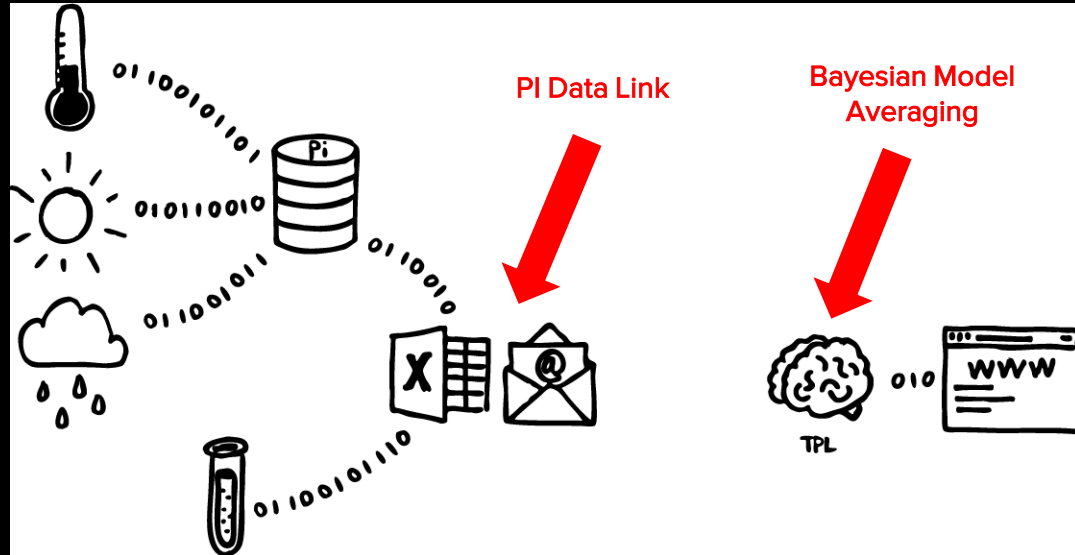


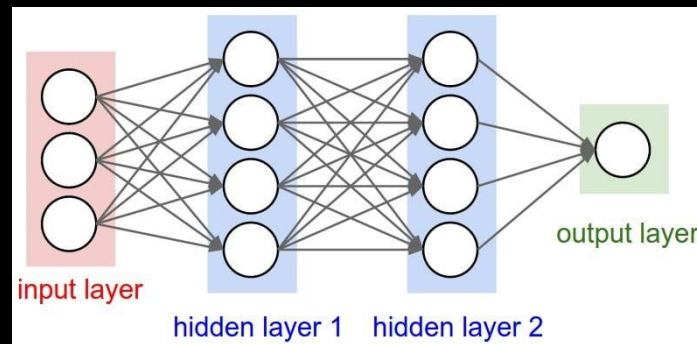
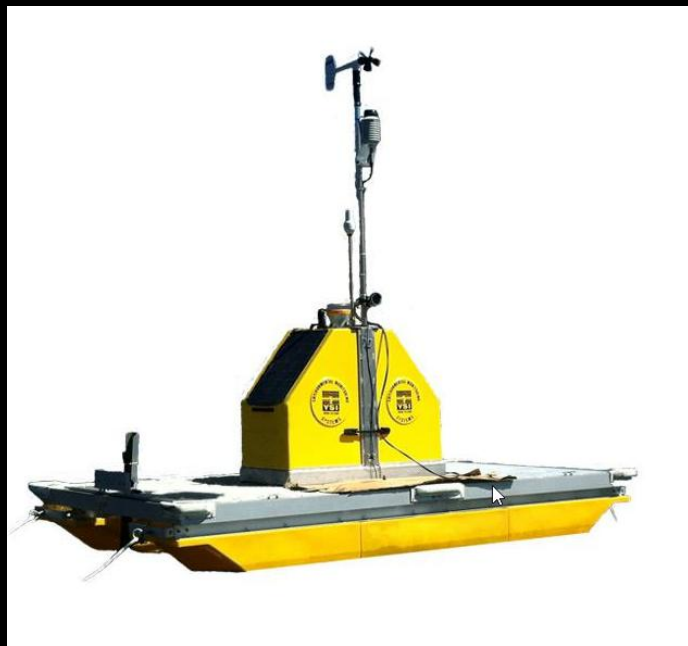
Experimental

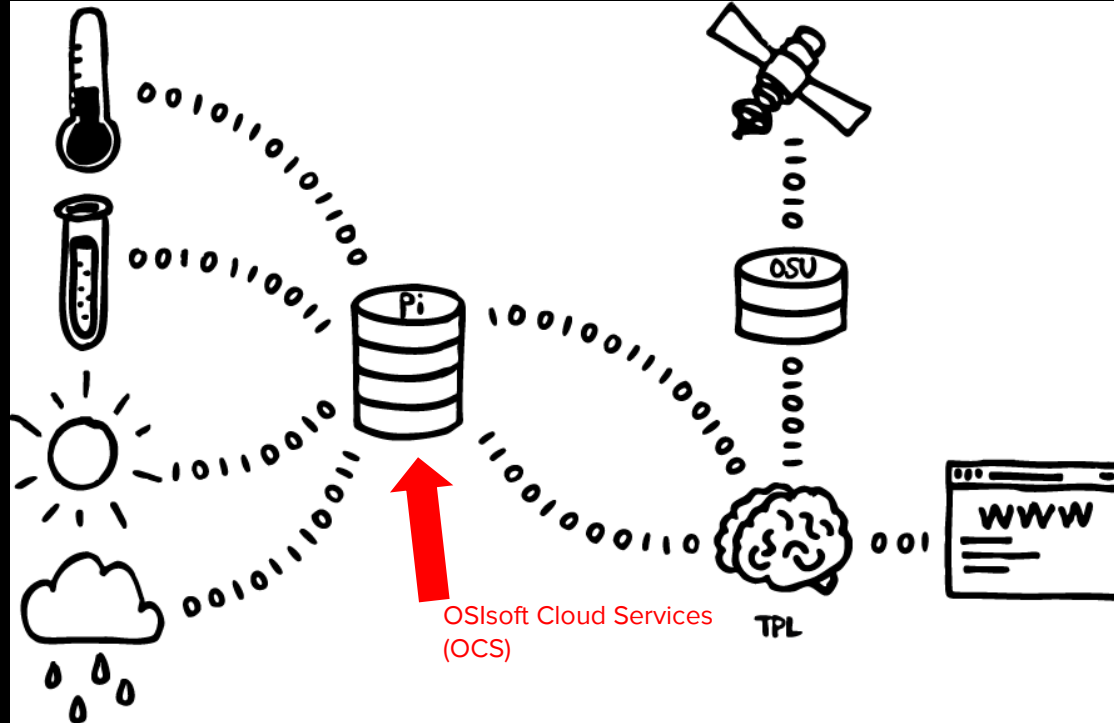


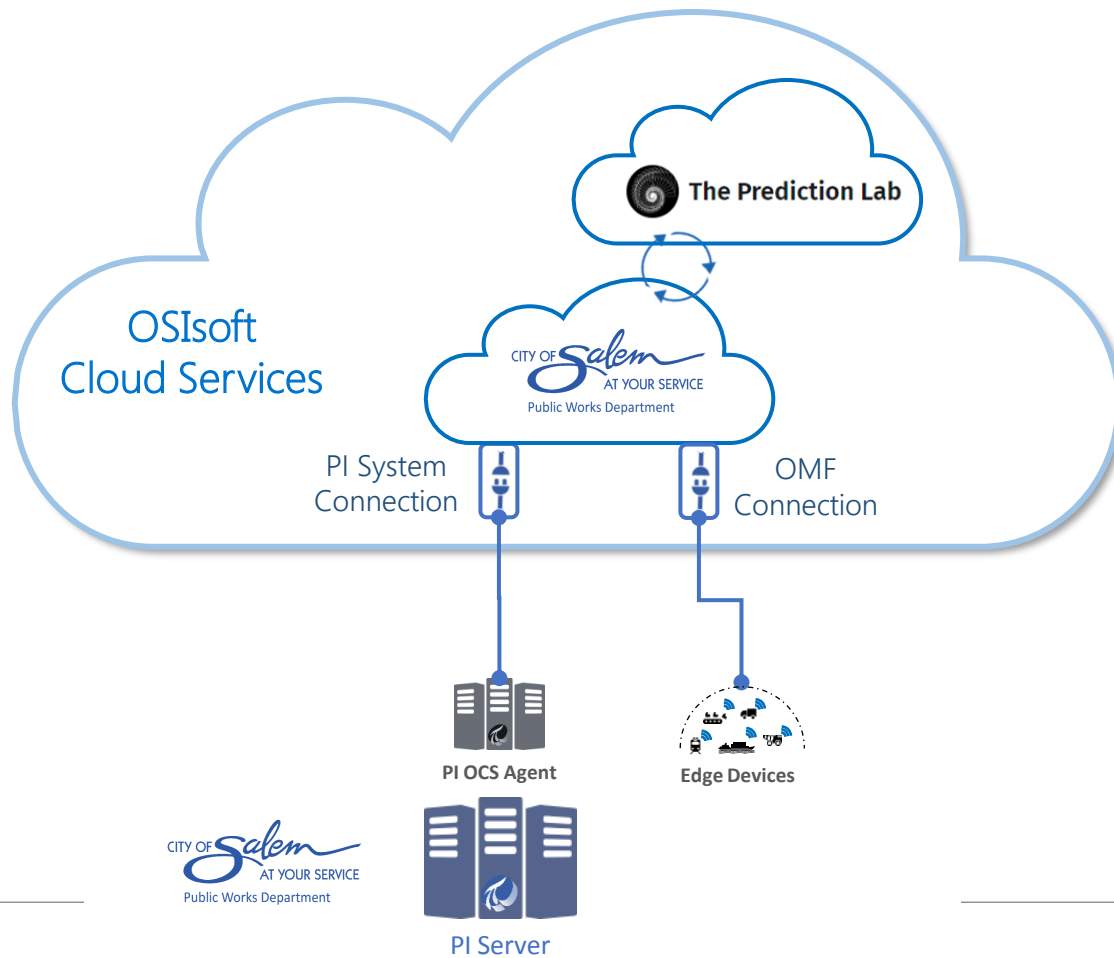
## Proof of concept - Summer of 2019

<https://thepredictionlabllc.github.io/detroit-lake-predictions/>









# QUESTIONS?

Devin Doring

[DDoring@cityofsalem.net](mailto:DDoring@cityofsalem.net)

# THANK YOU

